

Update on Arvin/Lamont Community Air Monitoring 2026, Quarter 1

Arvin/Lamont CSC Meeting
April 22, 2026

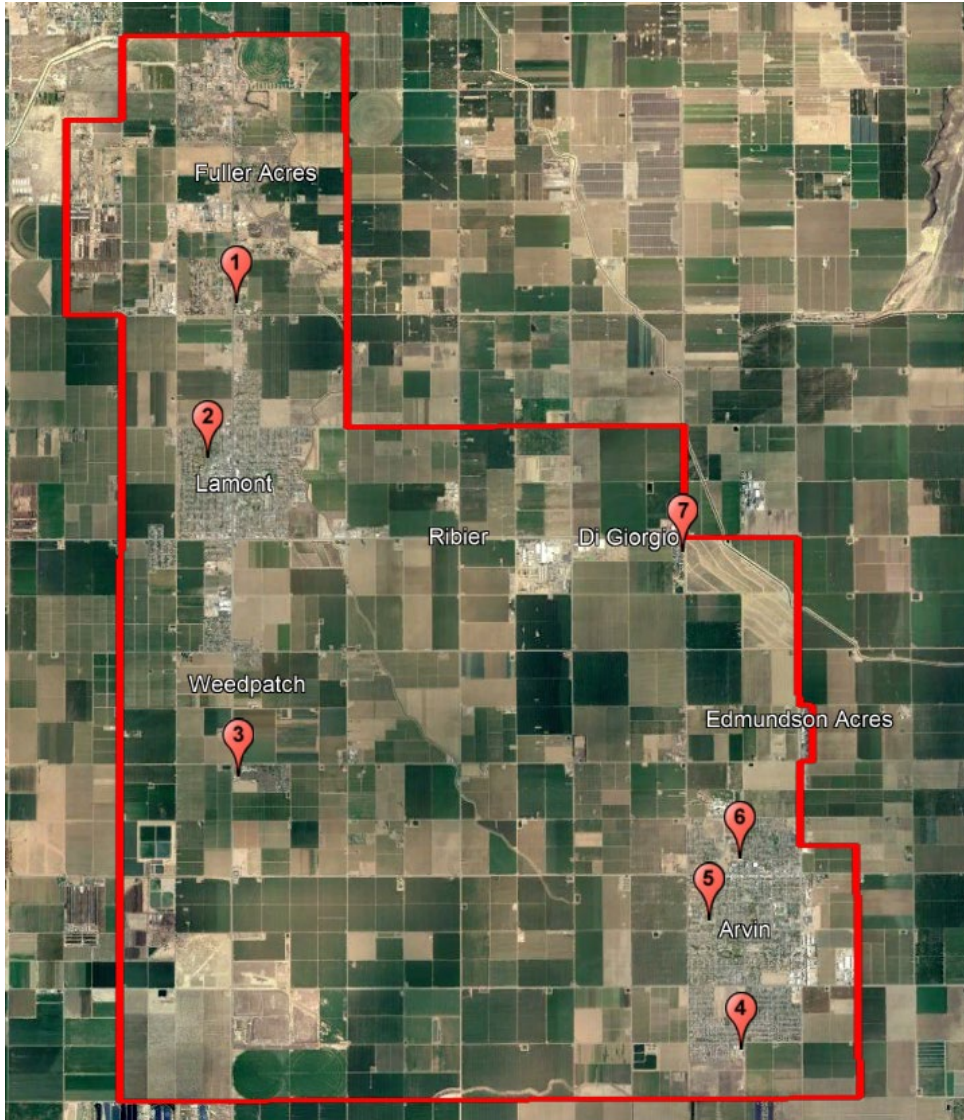
Air Monitoring Update

Status of Community Air Monitoring Plan
Implementation

Review Air Monitoring Data Collected

Questions and Comments

CAMP Implementation Status



#	Location	Monitoring	Done
1	Mountain View Middle School	PM2.5, BTEX, H2S, SO2	Yes
2	Alicante Elementary	PM2.5, BTEX, H2S, SO2, NOx, Black Carbon	In progress
3	Sunset Middle School	PM2.5	Yes
4	El Camino Real Elementary School	PM2.5	Yes
5	Bear Mountain Elementary School	PM2.5	Yes
6	Arvin Community Services District	PM2.5, H2S, SO2, NOx, Ozone, CO, Black Carbon, Toxics	Yes
7	Di Giorgio & Comanche	PM2.5	In progress

Community Air Monitoring Platforms



Community Air Monitoring Platforms (cont'd)



Ongoing Community Air Monitoring

- District is continuing localized air monitoring within the community boundary
- District is identifying an appropriate location to deploy PM2.5 monitor near Di Giorgio and Comanche Drive
- Coordinating with the Lamont School District to deploy an air monitor at Alicante Elementary School
 - Address electrical infrastructure needs and finalize equipment placement

Air Monitoring Update Summary

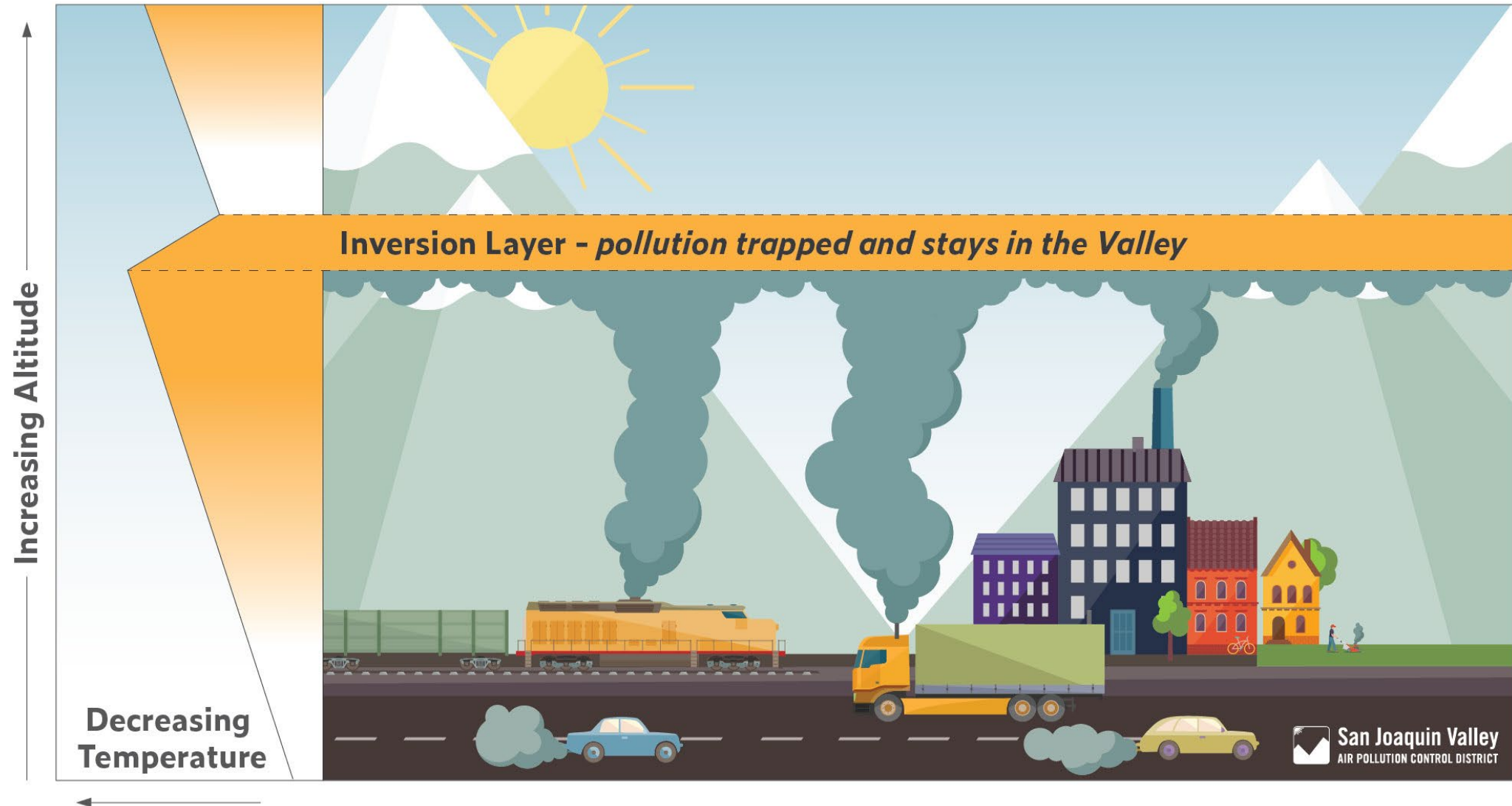
Average PM2.5 for Q1 higher than previous years

Fire and stagnation contributed to periods of elevated PM2.5

PM2.5 levels decreased coming out of winter season, as expected

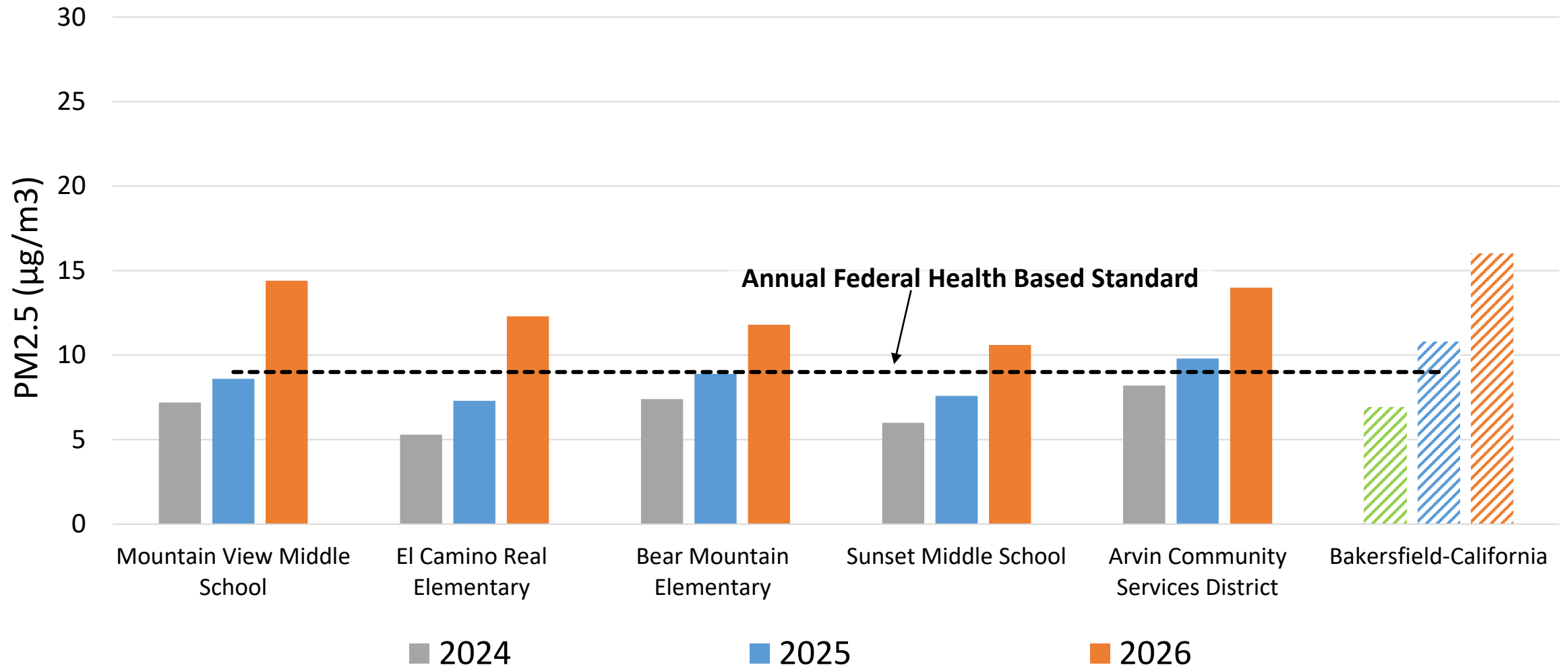
Air monitoring data available online at your community portal

What causes PM2.5 levels to be higher in the winter?



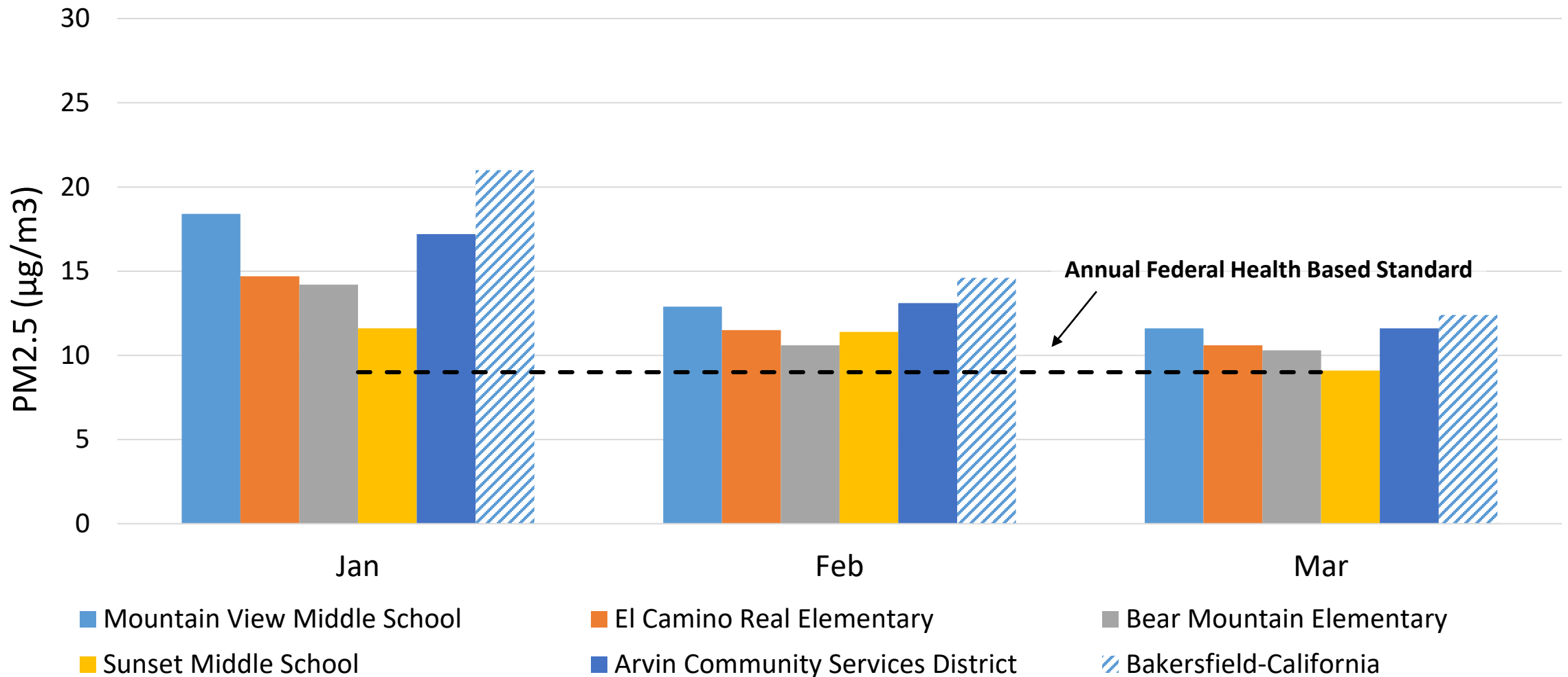
PM2.5 Quarterly Average Comparison

2026 Q1 PM2.5 higher due to increased stagnation compared to previous years



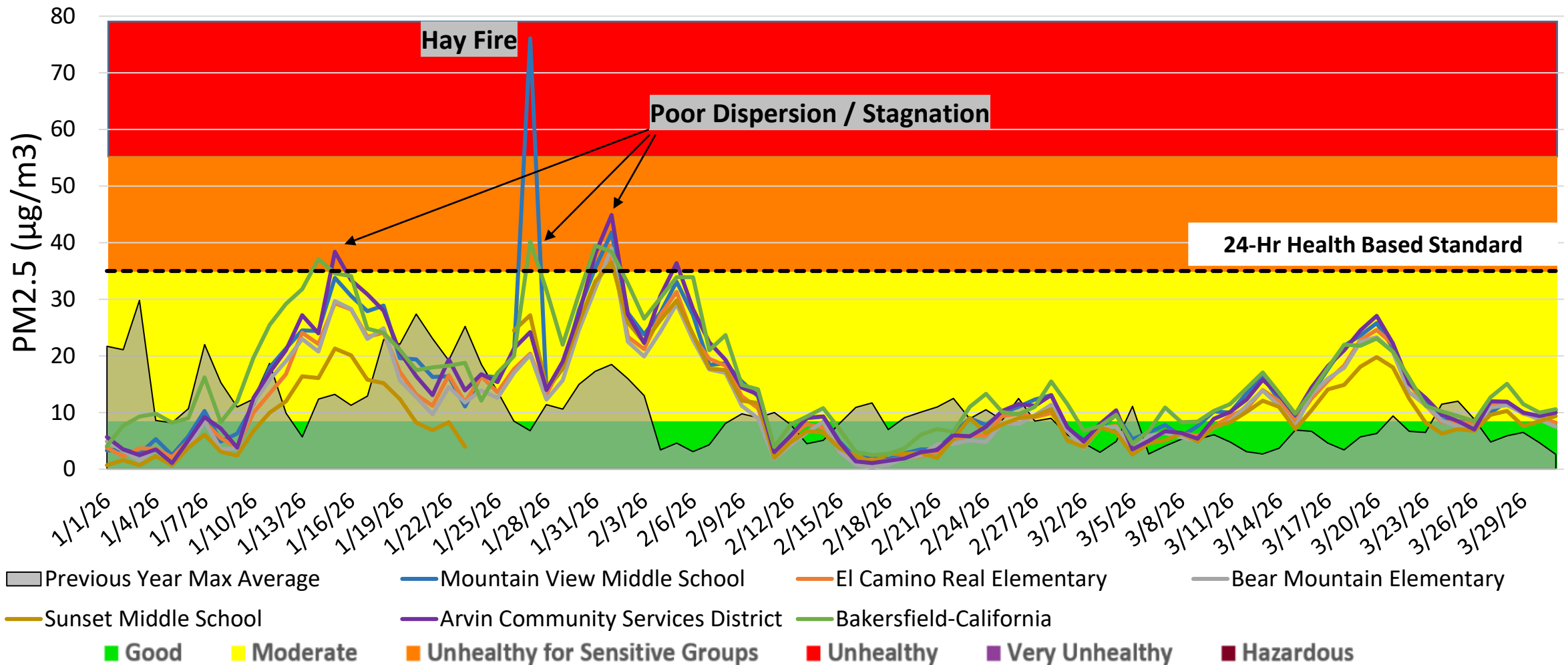
Monthly Average PM2.5 Comparison

PM2.5 levels decreased coming out of winter season, as expected



PM2.5 Daily Averages

Fire and stagnation contributed to periods of elevated PM2.5



Communicating Air Quality Episodes

Sent: Tuesday, January 27, 2026 4:54 PM

Subject: Hay Fire Smoke Impacts | Impactos de Humo de un Incendio de Paja

Hello Shafter and Arvin/Lamont CSCs,

A smoldering hay fire is producing air quality impacts in the Bakersfield, Arvin and Lamont areas. Foggy conditions may be trapping smoke near the ground, if you can smell smoke and see ash, this is an indication that air quality is unhealthy. Stay informed by visiting valleyair.org/protectyourself.

All community monitoring sites are operating and reporting hourly air quality data:

Shafter: <https://community.valleyair.org/selected-communities/shafter/community-air-monitoring/>

Arvin/Lamont: <https://community.valleyair.org/selected-communities/arvin-lamont/community-air-monitoring/>

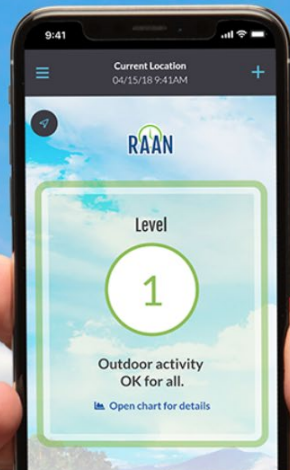
If you have any questions, comments or suggestions, please reach out to the District at AB617@valleyair.org or call [559-230-6000](tel:559-230-6000) and ask to speak to someone with the AB 617 program.





Download the Valley Air App

Keep track of current air quality in all of your important neighborhoods with Valley Air, the official app of the Valley Air District



559-230-6000

public.education@valleyair.org

valleyair.org/app

How to File an Air Pollution Complaint

Complaints may be filed online, by phone, or by using the Valley Air app on your smart phone

- Complaints are responded to 365 days a year
- Your information is confidential
- Filing a complaint will put you in touch with an Air Quality Inspector assigned to the complaint

Tulare, Valley portion of Kern

[\(800\) 926-5550](tel:(800)926-5550)

valleyair.org/complaints

Comments/Questions?