

Update on Shafter Community Air Monitoring

Shafter CSC Meeting

Quarter 1 (January - March 2025) Update

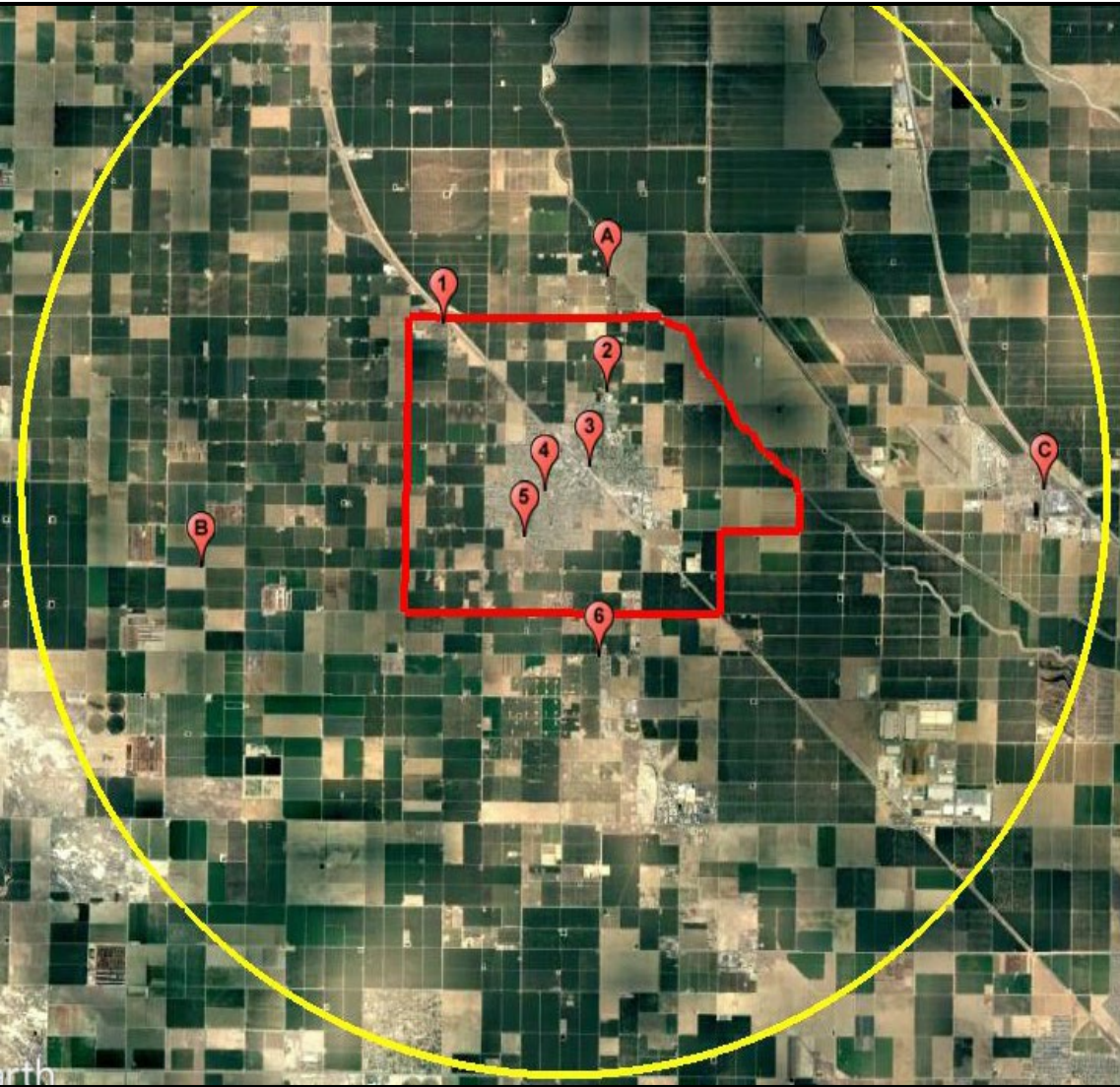
Air Monitoring Update

Status of Community Air Monitoring Plan Implementation

Review Air Monitoring Data Collected

Questions, Comments, And Recommendations

CAMP Implementation Status



#	Location	Monitoring	Done
1	Farm Labor Center	Monitoring Trailer	x
2	Sequoia Elementary	Multi-Pollutant	x
3	Shafter DMV	PM2.5	x
4	Golden Oak Elementary	PM2.5	x
5	Grimmway Academy	PM2.5	x
6	La Colonia	PM2.5	x*
A	North of Shafter in agriculture area	Monitoring Van	x
B	West of Shafter near dairy operations	Monitoring Van	x
C	East of Shafter near Highway 99 and Lerdo Highway	Monitoring Van	x

*Temporary PM 2.5 monitor installed

Community Air Monitoring Platforms



Community Air Monitoring Platforms (cont'd)



Community Air Monitoring Platforms (cont'd)



Ongoing Community Air Monitoring

- District continuing to conduct localized air monitoring in the Shafter community
- Working to deploy final air monitoring platforms across the community, according to Community Steering Committee recommended network design
 - Finalizing permanent PM 2.5 monitor at La Colonia
- Air monitoring van used to monitor pollutants in areas of interest of the community and near recommended site locations for network design
- Lab analysis of air samples continues for PM2.5 and VOC classification

Shafter Air Monitoring Update

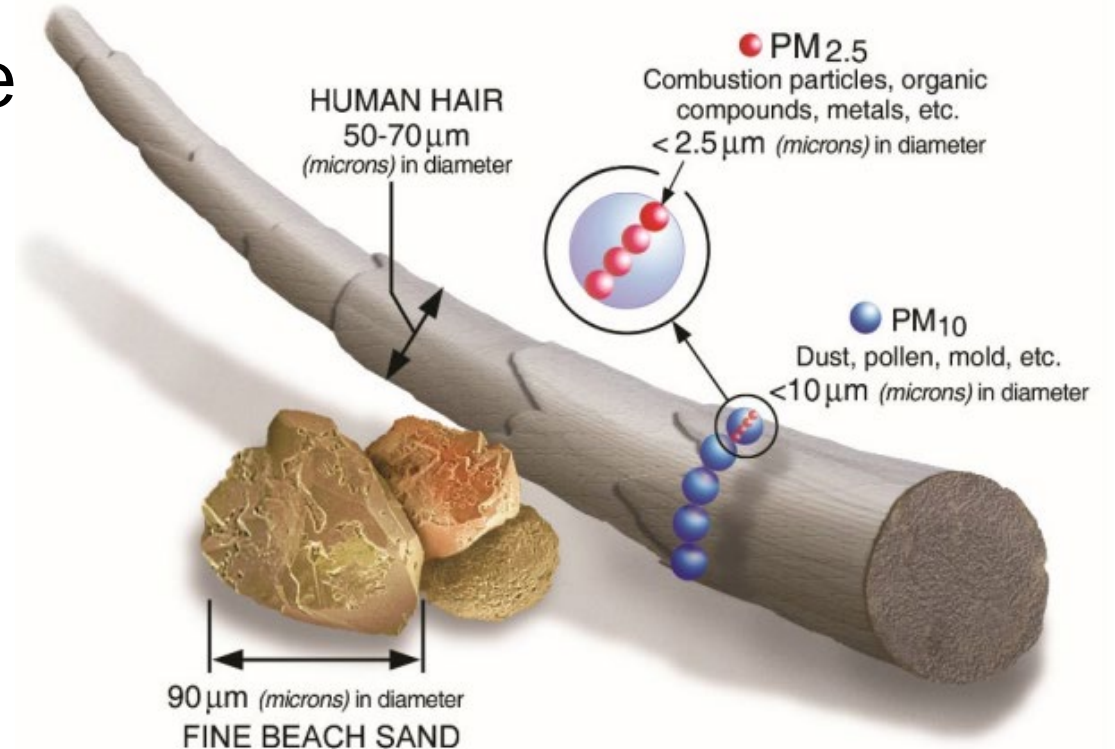
2025 Q1 PM2.5 levels slightly higher than in 2024

Cold, dry, and stagnant conditions in winter months contributed to higher PM2.5 levels

Air monitoring data available online at your community portal

Winter Air Pollution: PM2.5

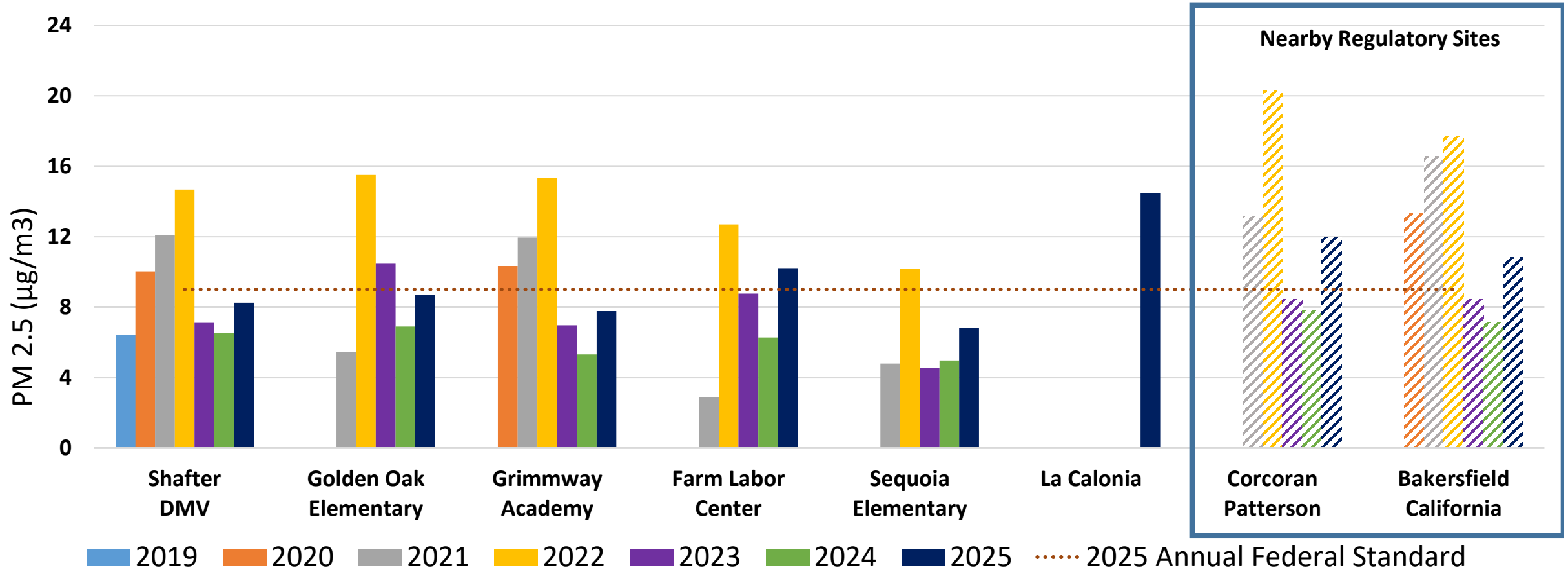
- PM2.5 is primary pollutant during winter
- Can be emitted directly, like smoke from fireplaces
- Can be formed in the atmosphere when certain compounds are present, like NO_x from trucks
- PM levels worse when inversion layer, or lid, sits over Valley



What causes PM2.5 levels to be higher in the winter?

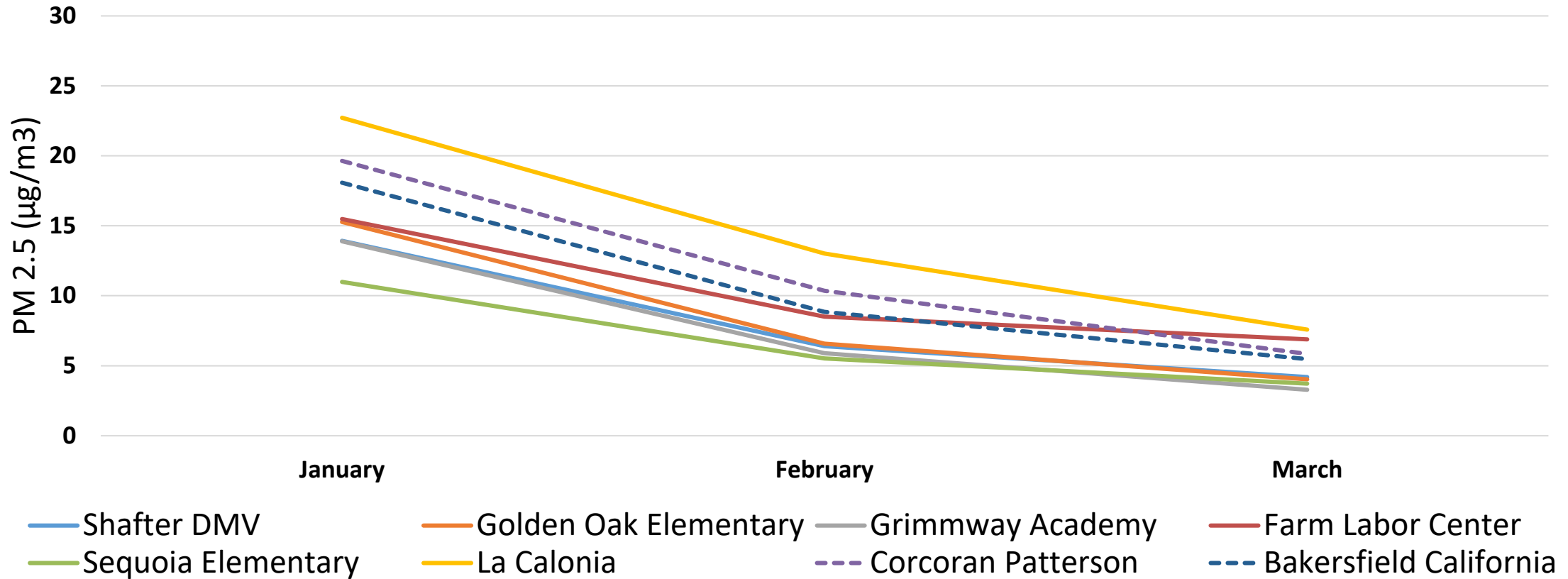


PM-2.5 Quarter 1 Average Comparison



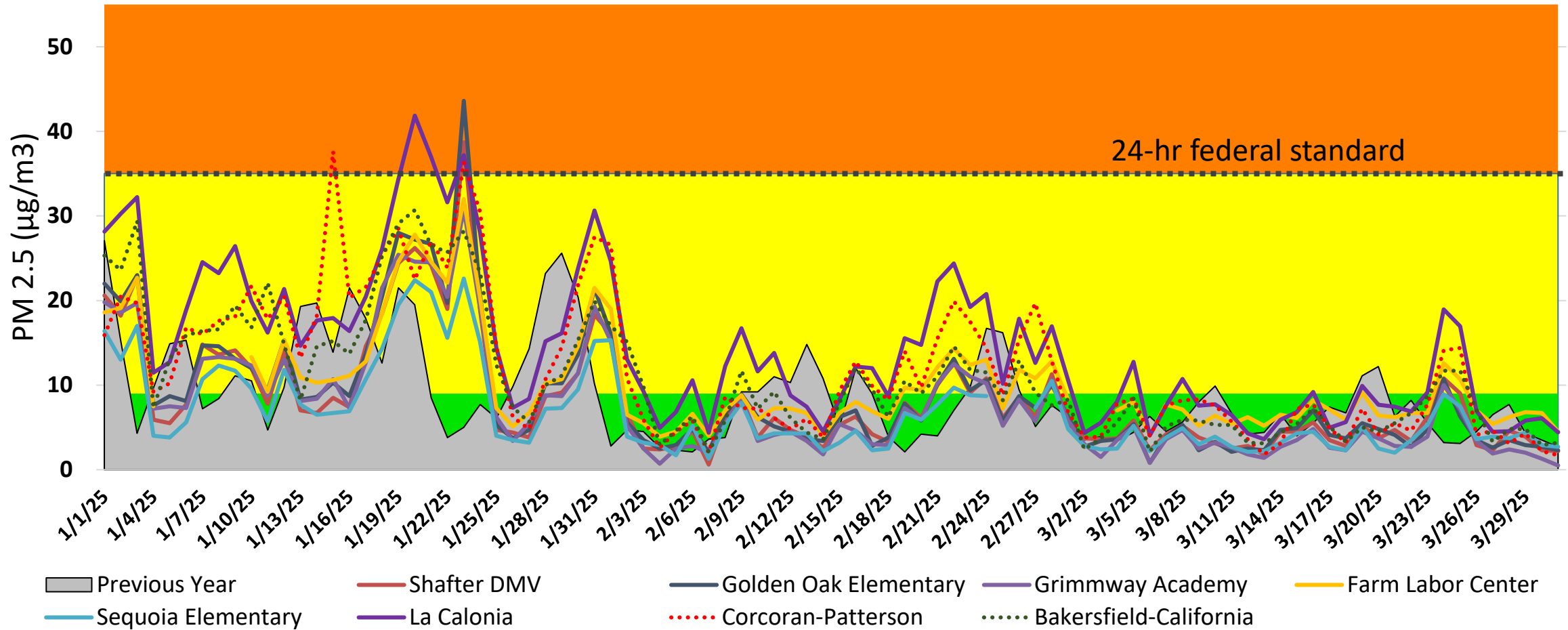
Community sites mostly lower than nearby regulatory sites

PM-2.5 Quarter 1 Monthly Average Comparison



Stagnation contributed to higher PM2.5 in winter season

PM-2.5 Quarter 1 Daily Averages



PM2.5 levels dropped as expected with the transition from cooler to warmer weather

■ Good
 ■ Moderate
 ■ Unhealthy for Sensitive Groups
 ■ Unhealthy
 ■ Very Unhealthy
 ■ Hazardous

How can the District make sure the community knows that we expect worse air quality?



NEWS Release



24hr Media Cell Phone (559) 309-3336

For immediate release 06-27-2024

Attn: Local news, weather, health and assignment editors

Media Contact:
Heather Heinks (559) 994-7591
Spanish Media Contact:
Maricela Velasquez (559) 230-5849

Fresno County Wildfires Impact Valley Air Quality *District has issued an Air Quality Alert with the National Weather Service*

Ongoing wildfires in the Eastern Fresno County are generating smoke that is now affecting the San Joaquin Valley. Weather patterns through this weekend have the potential to continue to draw wildfire smoke into the Valley counties of Madera, Fresno, Tulare and Kern. As a result, the District has issued an Air Quality Alert with the National Weather Service. Residents impacted by the smoke are advised to stay indoors to minimize exposure to particulate matter (PM) emissions. This Air Quality Alert is in effect until the fires are extinguished.

The District strongly urges the public to take health-protective actions to stay safe when smoke from wildfires affects the Valley, including following [air-quality recommendations](#) when making decisions about outdoor activities. Additional health protective actions include:

- Staying indoors
- Using portable air cleaners or high-efficiency filters to remove fine particles from the air
- Planning ahead and creating a [clean air room](#)
- Visiting a [Clean Air Center](#). Similar to the Valley's cooling centers, the District's Clean Air Centers provide relief when wildfires & smoke events occur



- News releases are issued before known and expected high pollution days
- District posts updates to social media sites like Facebook, X, and Nextdoor
- Keep health departments and schools notified

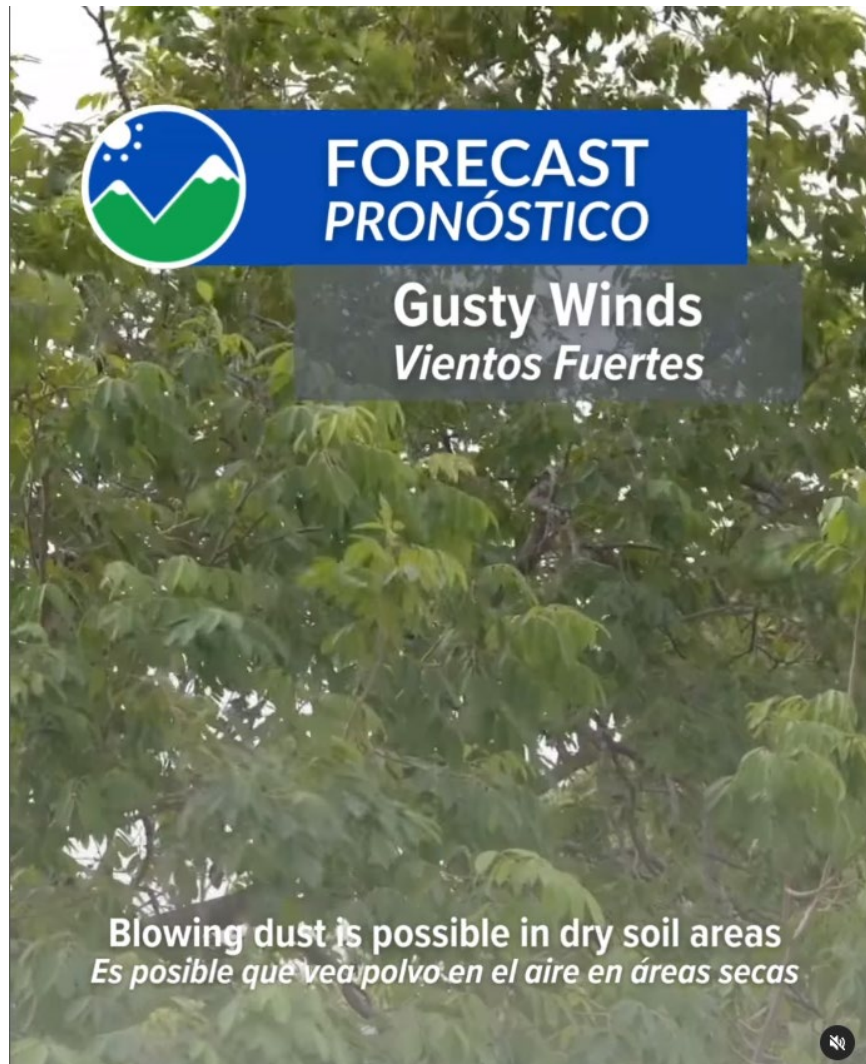


Valley Air District
Published by Hootsuite
July 19

Are you [#SmokeReady](#)? Visit our wildfire resource page for health tips and fire information. Remember, if you can see ash or smell smoke, you are being impacted by particulate matter pollution. Learn more at www.valleyair.org/wildfires.

[#ValleyAirDistrict](#) [#Wildfire](#) [#Smoke](#)

How can the District make sure the community knows that we expect worse air quality?



San Joaquin Valley Air Pollution Control District ✓
Outreach & Communications Manager Heather Hei... • 37 min ago • Edited

-> Resources to help protect you from wildfire smoke <-
Neighbors – we're on day two of the Boone Fire (near Highway 198 and Boone Lane) and smoke is impacting your area. If you can see ash and smell smoke, you are being impacted by particulate matter pollution and should find an air conditioned/filtered space or leave the area. The District has a wildfire resource page that can keep you up to date on air quality conditions and fire conditions. www.valleyair.org/wildfires

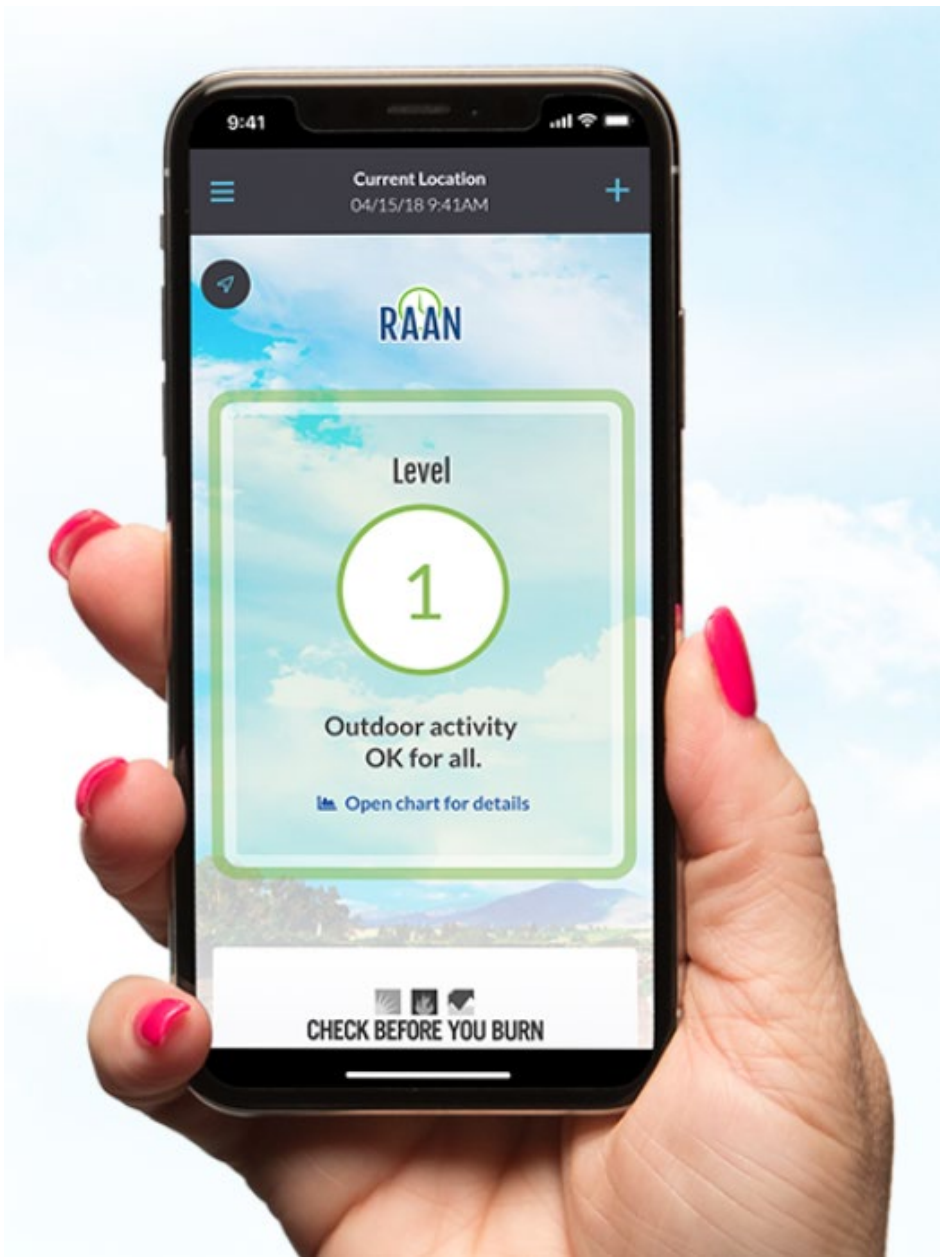
The Valley Air District team in partnership with CCEJN will be in the Coalinga area TODAY (9-4-2024/11am - 2pm) helping residents sign up for our Clean Air Rooms program. You can sign up directly right now at www.valleyair.org/roompurifier or visit us today and we'll help you sign up.

Iglesia Apostolica de la Fe en Cristo Jesus
401 N Coalinga St.
Coalinga CA 93210

Boone Fire
9% Contained | 11,000 Acres | 1 County: Fresno

Fresno County Evacuation

Legend:
Fresno County Road Blocks
Other
Fresno County Road Closures
Fresno County Road Detours
CalTransTrafficData - Closure
CalTransTrafficData - CHP Incidents
CHP Incident
CHP Incident (Full Closure)
Fresno County Evacuations
Evacuation Order(s) Lifted
Evacuation Warning
Evacuation Order



How to File an Air Pollution Complaint

Complaints may be filed online, by phone, or by using the Valley Air app on your smart phone

- Complaints are responded to 365 days a year
- Your information is confidential
- Filing a complaint will put you in touch with an Air Quality Inspector assigned to the complaint

Tulare, Valley portion of Kern

[\(800\) 926-5550](tel:(800)926-5550)

valleyair.org/complaints

Community Air Quality Data

- District AB 617 webpage at: <http://community.valleyair.org/community-air-monitoring>
 - Real-time community air monitoring data
 - Datos de monitoreo del aire provenientes de las camionetas de monitoreo, como se solicitó.
 - Quarterly reports
- CARB's statewide air quality data portal (AQview) displays and provides community air monitoring data from AB 617 communities
 - AQview website located at: <https://ww2.arb.ca.gov/es/community-air-quality-portal>
 - Air quality data from Valley AB 617 communities available at this website
 - Development ongoing, new features to be added

Comments/Questions?