



**Delta
Stewardship
Council**

A CALIFORNIA STATE AGENCY

Addressing Climate Impacts in The City of Stockton

DELTA ADAPTS AND YOUR COMMUNITY

What is Delta Adopts?

The Delta Stewardship Council launched Delta Adopts in 2018 to improve resilience to climate change impacts in the Sacramento-San Joaquin Delta and Suisun Marsh. The initiative will produce a regional plan that includes information and strategies that can be used to help communities plan for climate impacts with a focus on human safety and wellbeing, flood protection and water supply infrastructure, agriculture, and habitats. We plan to have a draft available for public comment in early 2024.



Key Climate Vulnerabilities in Stockton

Stockton is most vulnerable to



Very high flood risk: Stockton is projected to be the most highly exposed city to flooding in the Delta.



Extreme heat: Stockton will likely experience five times more extreme heat days by 2050 than what is currently experienced.

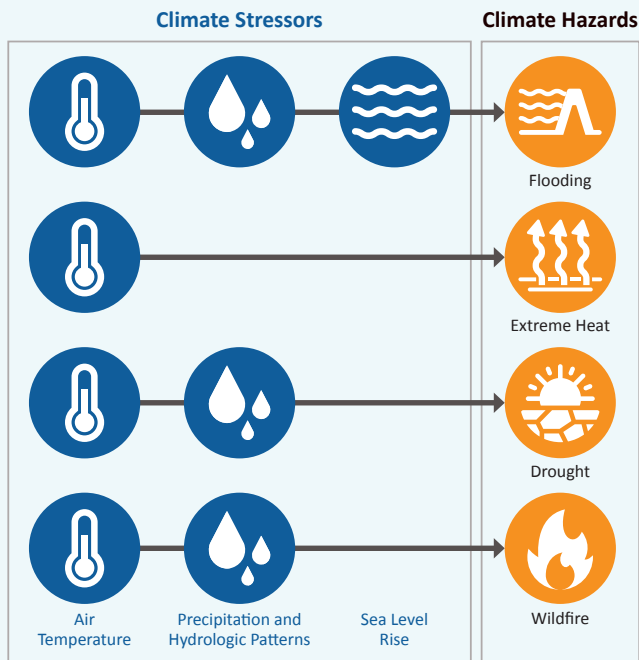
Adaptation Priorities for Stockton

We want to ensure the regional Adaptation Plan captures your community's adaptation priorities, including but not limited to the following priorities identified through prior engagement with the Stockton community. This includes two community workshops hosted in partnership with 5 Stockton community organizations.

- » Implement multi-benefit projects, e.g. Mormon Slough.
- » Use collaborative thinking and systemwide investments to prepare for future flood risks.
- » Protect vulnerable infrastructure: Highway 99, Stockton Airport, Highway 4.
- » Raise awareness about the need for more funding for flood risk reduction.
- » Make outreach information accessible in communities with language and technology barriers and get residents more involved in adaptation.
- » Coordinate across agency adaptation plans to avoid community participation fatigue.



What is the Vulnerability Assessment?



The Vulnerability Assessment examines these hazards:

- » Flooding and sea level rise
- » Extreme heat
- » Drought
- » Wildfire smoke

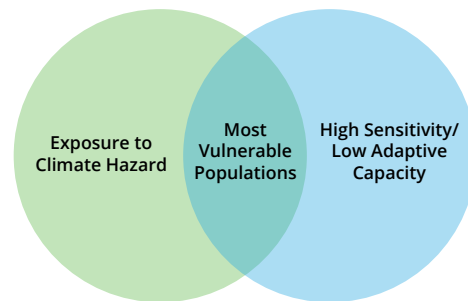
Key takeaways:

- » Flooding will continue to get worse.
- » Climate change will not impact Delta residents equally.
- » Delta water exports will be less reliable in the future.
- » The existing water supply system does not provide enough storage to capture anticipated increases in runoff due to more variable precipitation.
- » In-Delta water uses may be threatened by water quality declines.
- » Delta ecosystems will continue to be stressed under climate change and have little room to migrate.
- » Agricultural production trends will shift with climate change.

Delta Adapts comprises:

PART 1: A climate change **Vulnerability Assessment** evaluates the vulnerability of the Delta and Suisun Marsh to climate impacts through the end of the century, including identifying the communities most vulnerable to climate impacts because they are more sensitive to climate impacts and have fewer resources to respond and recover.

PART 2: An **Adaptation Plan** identifies a range of actions government agencies and communities can take to improve regional adaptation to enhance resiliency for socially vulnerable communities.



Identifying Climate Vulnerability

Environmental justice and equity at the forefront of our work

Ensuring that strategies integrate equity and environmental justice (EJ) and prioritize socially vulnerable communities is essential. The regional Adaptation Plan has been informed by several activities:

- » Consultation with the Council's EJ Expert Group.
- » 22 EJ-focused (compensated) interviews with CBOs across the Bay-Delta.
- » Meetings with community organizations in vulnerable communities focused on climate concerns.
- » Over 2,200 responses to the Delta Residents Survey.



Equity is just and fair inclusion into a society in which all can participate, prosper, and reach their full potential.