

Update on Shafter Community Air Monitoring

Shafter CSC Meeting

Quarter 2 (April - June 2025) Update

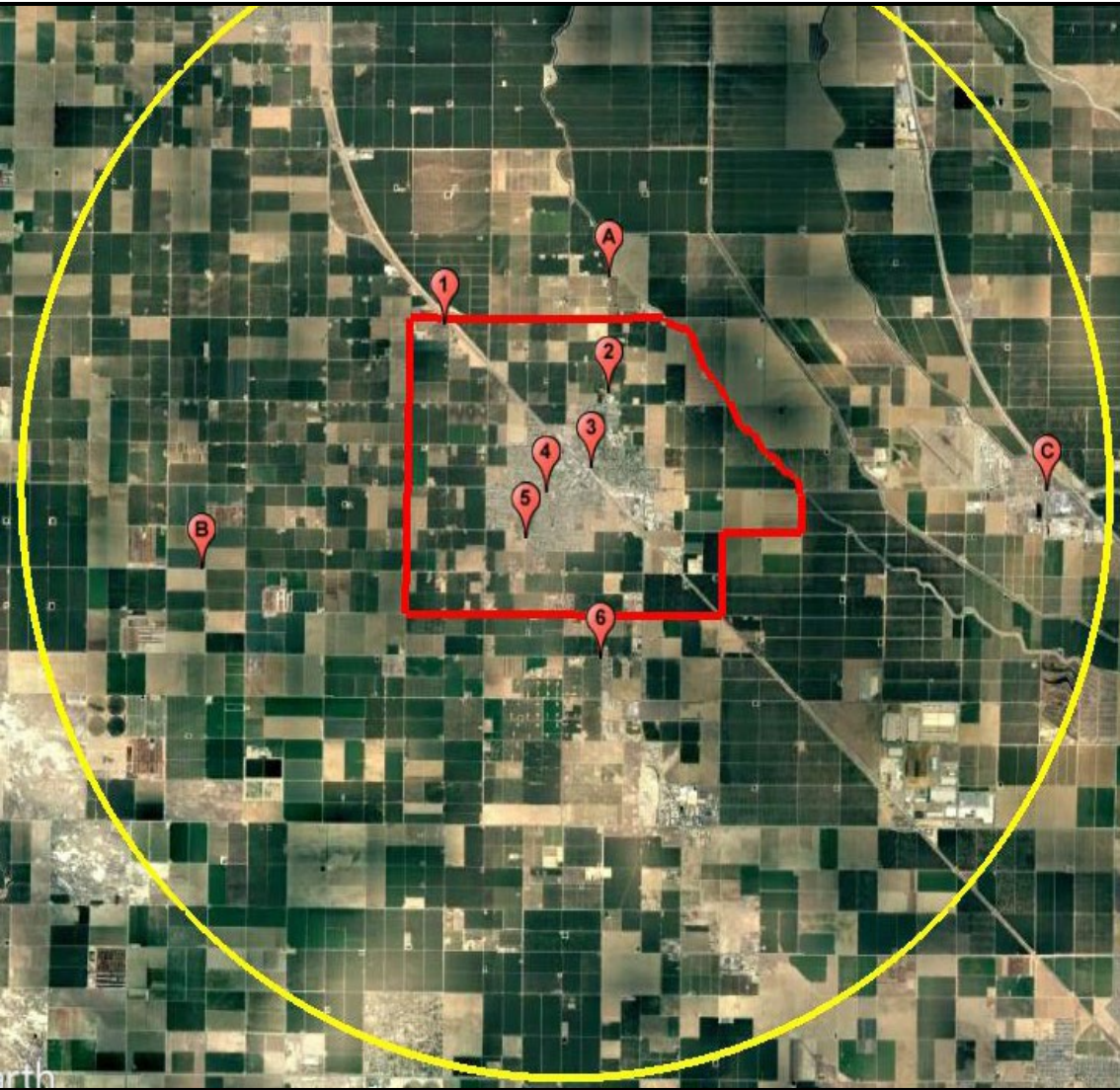
Air Monitoring Update

Status of Community Air Monitoring Plan Implementation

Review Air Monitoring Data Collected

Questions, Comments, and Recommendations

CAMP Implementation Status



#	Location	Monitoring	Done
1	Farm Labor Center	Monitoring Trailer	x
2	Sequoia Elementary	Multi-Pollutant	x
3	Shafter DMV	PM2.5	x
4	Golden Oak Elementary	PM2.5	x
5	Grimmway Academy	PM2.5	x
6	La Colonia	PM2.5	x*
A	North of Shafter in agriculture area	Monitoring Van	x
B	West of Shafter near dairy operations	Monitoring Van	x
C	East of Shafter near Highway 99 and Lerdo Highway	Monitoring Van	x

*Temporary PM 2.5 monitor installed

Community Air Monitoring Platforms



Community Air Monitoring Platforms (cont'd)



Community Air Monitoring Platforms (cont'd)



Ongoing Community Air Monitoring

- District continuing to conduct localized air monitoring in the Shafter community
- Working to deploy final air monitoring platforms across the community, according to Community Steering Committee recommended network design
 - Finalizing permanent PM 2.5 monitor at La Colonia
- Air monitoring van available to monitor pollutants in areas of interest of the community and near recommended site locations for network design
- Lab analysis of air samples continues for PM2.5 and VOC classification
- PM10 and PM2.5 down at Shafter DMV due to minor fire. Working with facility to repair damage and review electrical system.

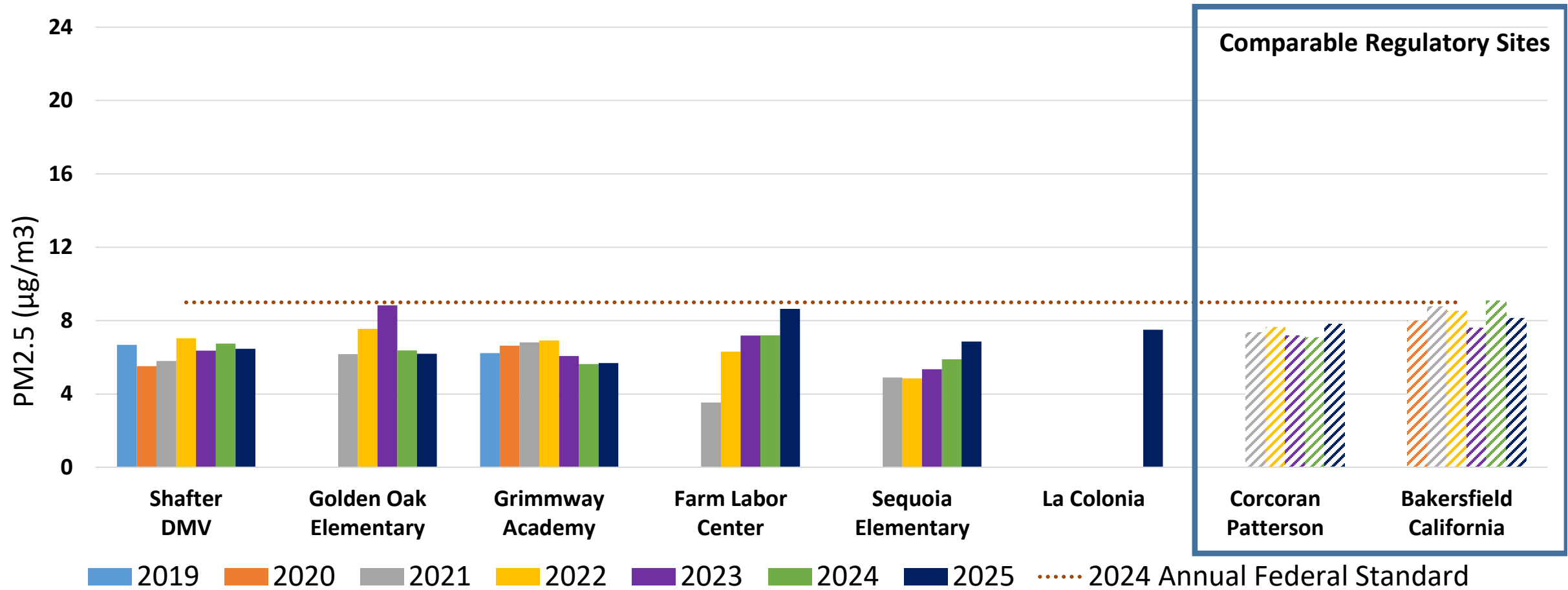
Shafter Air Monitoring Update

2025 Q2 PM2.5 levels similar to same time period in 2024.

PM2.5 in the spring is traditionally the cleanest part of our year in the Central Valley.

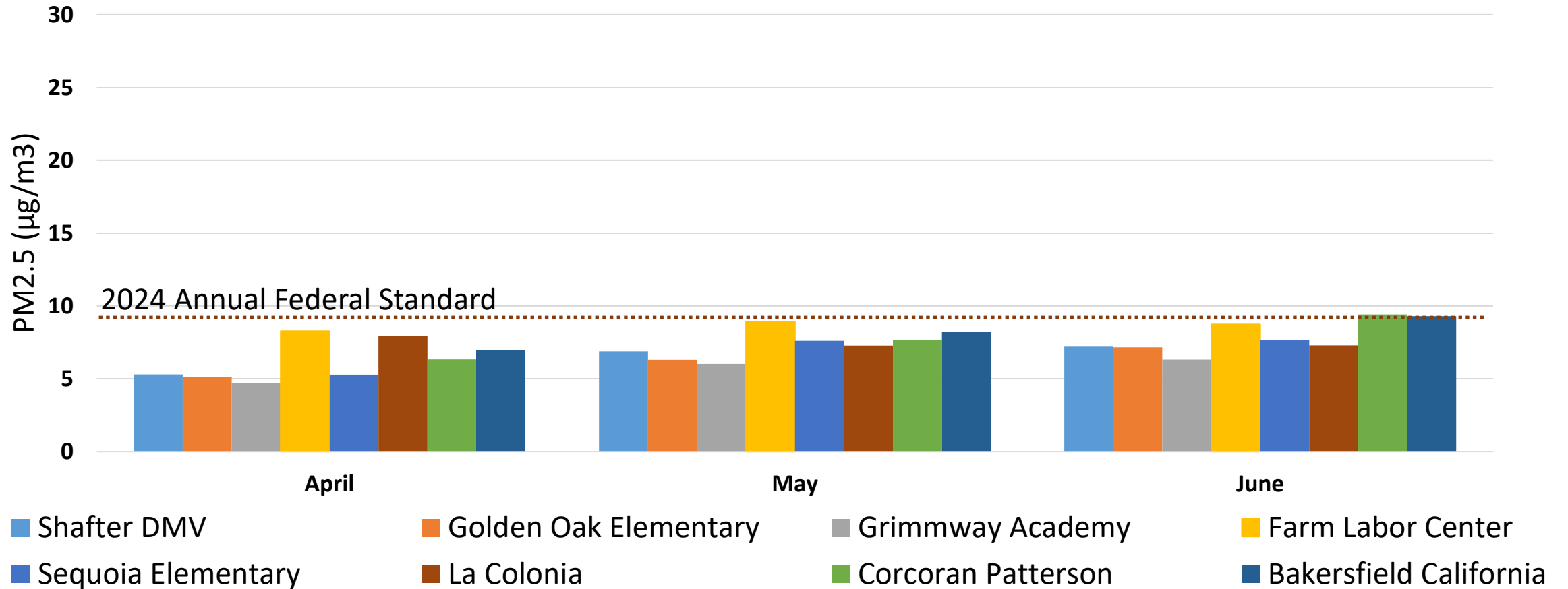
Air monitoring data available online at your community portal.

PM2.5 Quarterly Average Comparison



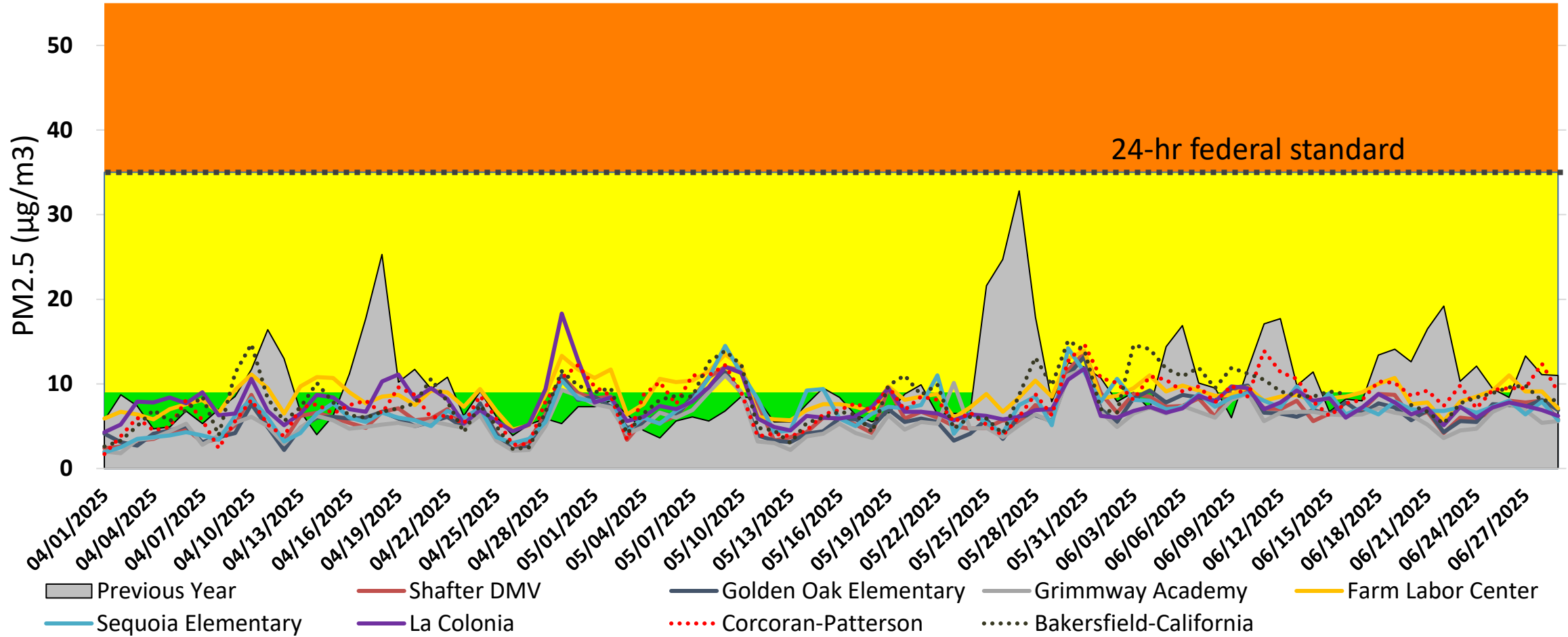
Quarter 2 typically clean, below Annual Federal Standard

PM2.5 Monthly Average Comparison



Monthly averages primarily lower than Annual Federal Standard

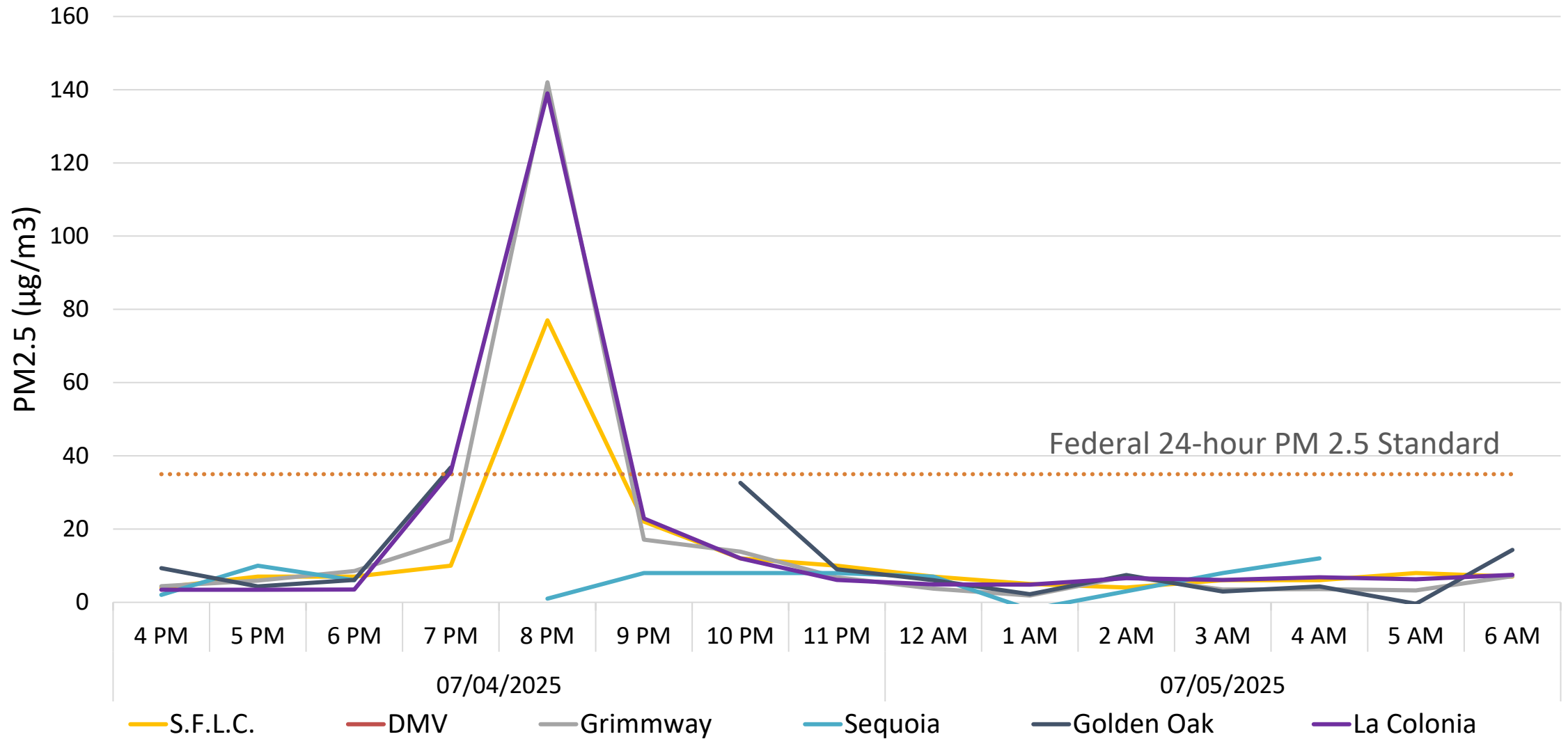
PM2.5 Daily Averages



Less PM2.5 spikes than last year with levels in Good and Moderate range

■ Good
 ■ Moderate
 ■ Unhealthy for Sensitive Groups
 ■ Unhealthy
 ■ Very Unhealthy
 ■ Hazardous

4th of July PM2.5 Hourly Impacts



Communicating Air Quality Episodes



For immediate release 06/30/2025

Attn: Local news, weather, and assignment editors

Media Contact

Heather Heinks (559) 994-7591

Spanish-language Contact

Michelle Rivera (559) 230-6547

Fireworks Increase Air Pollution and Risk Public Health

Valley Air District Urges Residents to Prioritize Health and Safety this 4th of July

The Valley Air District is urging residents to limit using personal fireworks this 4th of July due to their harmful impact on air quality and public health. Fireworks emit dangerous levels of fine particulate matter (PM2.5) which includes soot, ash, and heavy metals. These pollutants can lead to health problems, especially for young children, older adults, and people with respiratory illnesses. In addition to impacting air quality, fireworks present significant safety risks and contribute to noise pollution, often resulting in injuries, fires, and distress for pets, wildlife, veterans and community members.

- News releases are issued before known and expected high pollution days
- District posts updates to social media sites like Facebook, X, and Nextdoor
- Keep health departments and schools notified



Valley Air District

Published by Hootsuite



July 19 · 🌐


Are you [#SmokeReady](#)? Visit our wildfire resource page for health tips and fire information. Remember, if you can see ash or smell smoke, you are being impacted by particulate matter pollution. Learn more at www.valleyair.org/wildfires.

[#ValleyAirDistrict](#) [#Wildfire](#) [#Smoke](#)

Communicating Air Quality Episodes

San Joaquin Valley Air Pollution Control District ✓
Communications Representative Danny Gonzalez • 22 Aug

Smoke from the Coffee Pot Fire in Tulare County is expected to affect the foothills and mountainous communities, and eastern parts of Madera, Fresno, and Tulare counties, as well as the Valley portion of Kern County. Before engaging in any outdoor activities, be sure to check the air quality in your area. For more information, visit www.valleyair.org/wildfires.



Wildfire Impact Update:
Possible smoke impacts from wildfires around the state

Actualización sobre el impacto de los incendios forestales:
Posibles impactos del humo de incendios forestales en todo el estado

www.valleyair.org/wildfires

Wildfires
valleyair.org

Posted to Subscribers of San Joaquin Valley Air Pollution Control District in 4 areas

19 • 53,511 Impressions

San Joaquin Valley Air Pollution Control District ✓
Outreach & Communications Manager Heather Hei... • 37 min ago • Edited

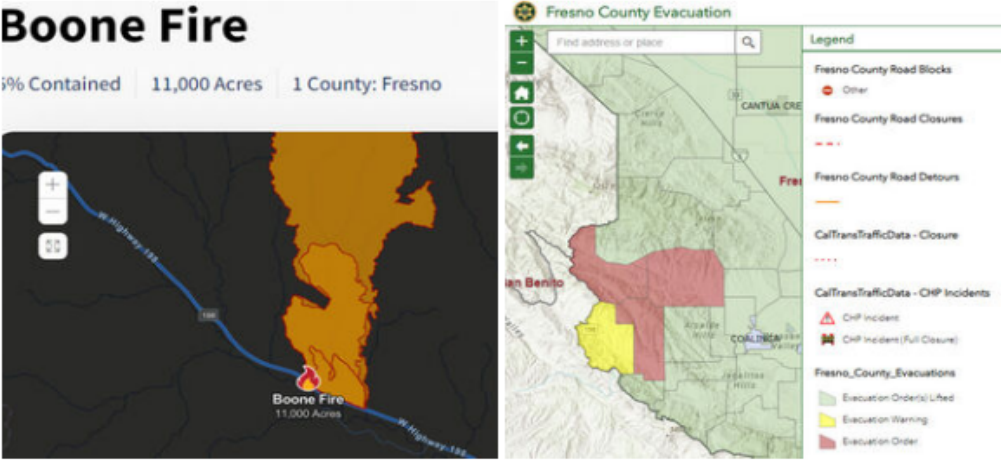
-> Resources to help protect you from wildfire smoke <-

Neighbors – we're on day two of the Boone Fire (near Highway 198 and Boone Lane) and smoke is impacting your area. If you can see ash and smell smoke, you are being impacted by particulate matter pollution and should find an air conditioned/filtered space or leave the area. The District has a wildfire resource page that can keep you up to date on air quality conditions and fire conditions. www.valleyair.org/wildfires

The Valley Air District team in partnership with CCEJN will be in the Coalinga area TODAY (9-4-2024/11am - 2pm) helping residents sign up for our Clean Air Rooms program. You can sign up directly right now at www.valleyair.org/roompurifier or visit us today and we'll help you sign up.

Iglesia Apostolica de la Fe en Cristo Jesus
401 N Coalinga St.
Coalinga CA 93210

Boone Fire
9% Contained | 11,000 Acres | 1 County: Fresno

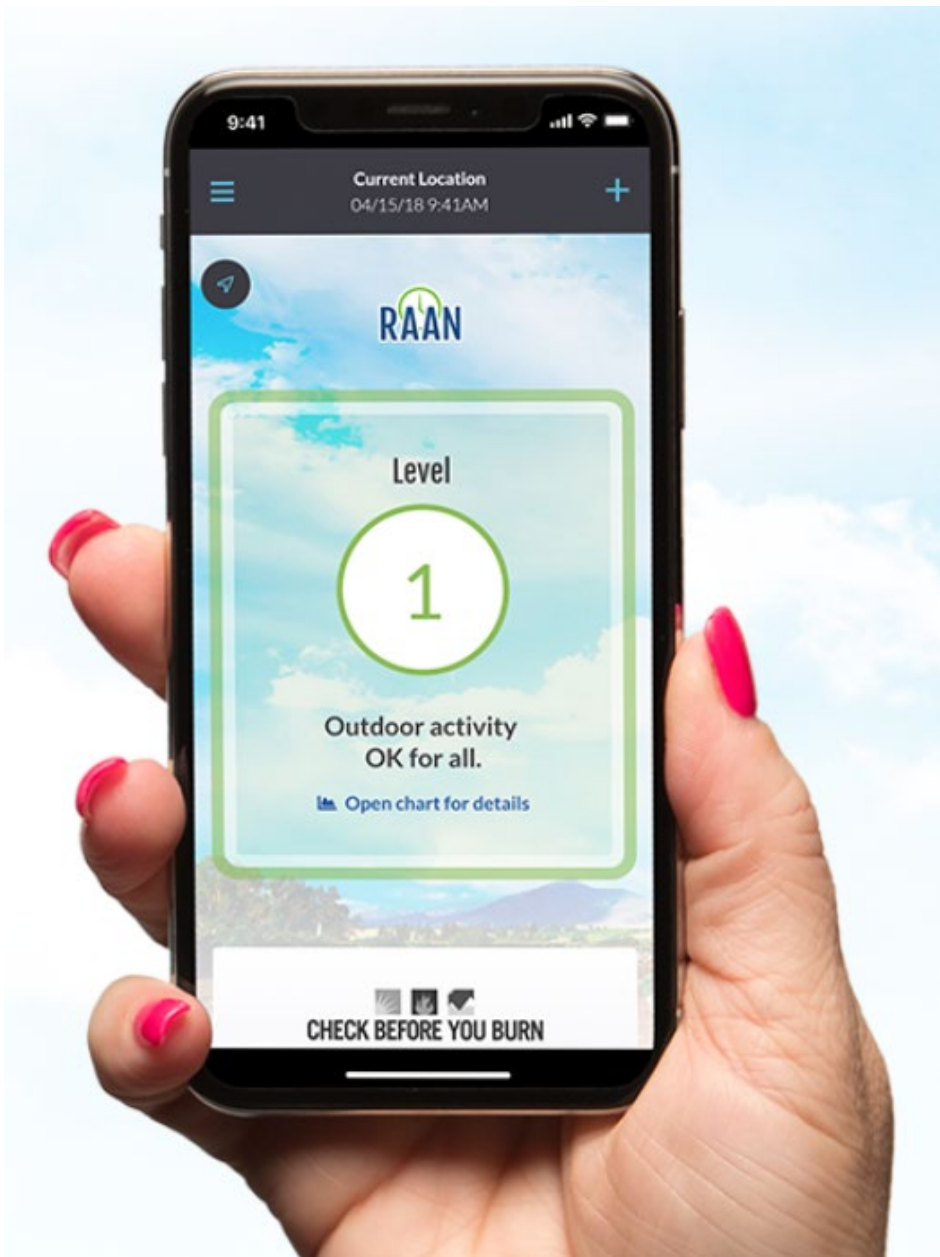


Fresno County Evacuation

Find address or place

Legend

- Fresno County Road Blocks
- Other
- Fresno County Road Closures
- Fresno County Road Detours
- CalTransTrafficData - Closure
- CalTransTrafficData - CHP Incidents
- CHP Incident
- CHP Incident (Full Closure)
- Fresno County Evacuations
- Evacuation Order (Lined)
- Evacuation Warning
- Evacuation Order



How to File an Air Pollution Complaint

Complaints may be filed online, by phone, or by using the Valley Air app on your mobile device

- Complaints are responded to 365 days a year
- Your information is confidential
- Leaving your contact info will allow the responding Air Quality Inspector to contact you

Tulare, Valley portion of Kern

[\(800\) 926-5550](tel:(800)926-5550)

valleyair.org/complaints

Community Air Quality Data

- District AB 617 webpage at:
<http://community.valleyair.org/community-air-monitoring>
 - Real-time community air monitoring data
 - Air monitoring data from vans
 - Quarterly reports
- CARB's statewide air quality data portal (AQview) displays and provides community air monitoring data from AB 617 communities
 - AQview website located at: <https://ww2.arb.ca.gov/es/community-air-quality-portal>
 - Air quality data from Valley AB 617 communities available at this website
 - Development ongoing, new features to be added

Comments/Questions