

February 2024

# Climate Equity in Stockton

## Delta Stewardship Council's *Delta Adapts* and EJ initiatives

Morgan Chow, Senior Planner  
Annie Merritt, Environmental Scientist



Delta  
Stewardship  
Council

A CALIFORNIA STATE AGENCY

# Council Climate and EJ Initiatives

## Delta Adapts



## EJ and Tribal Justice Issue Paper



**Build a network of community leaders**



**Identify environmental justice issues**



**Identify options to address those issues**



# What is the Delta Stewardship Council?



# Council Role and Activities

---

## Implementing the Delta Plan

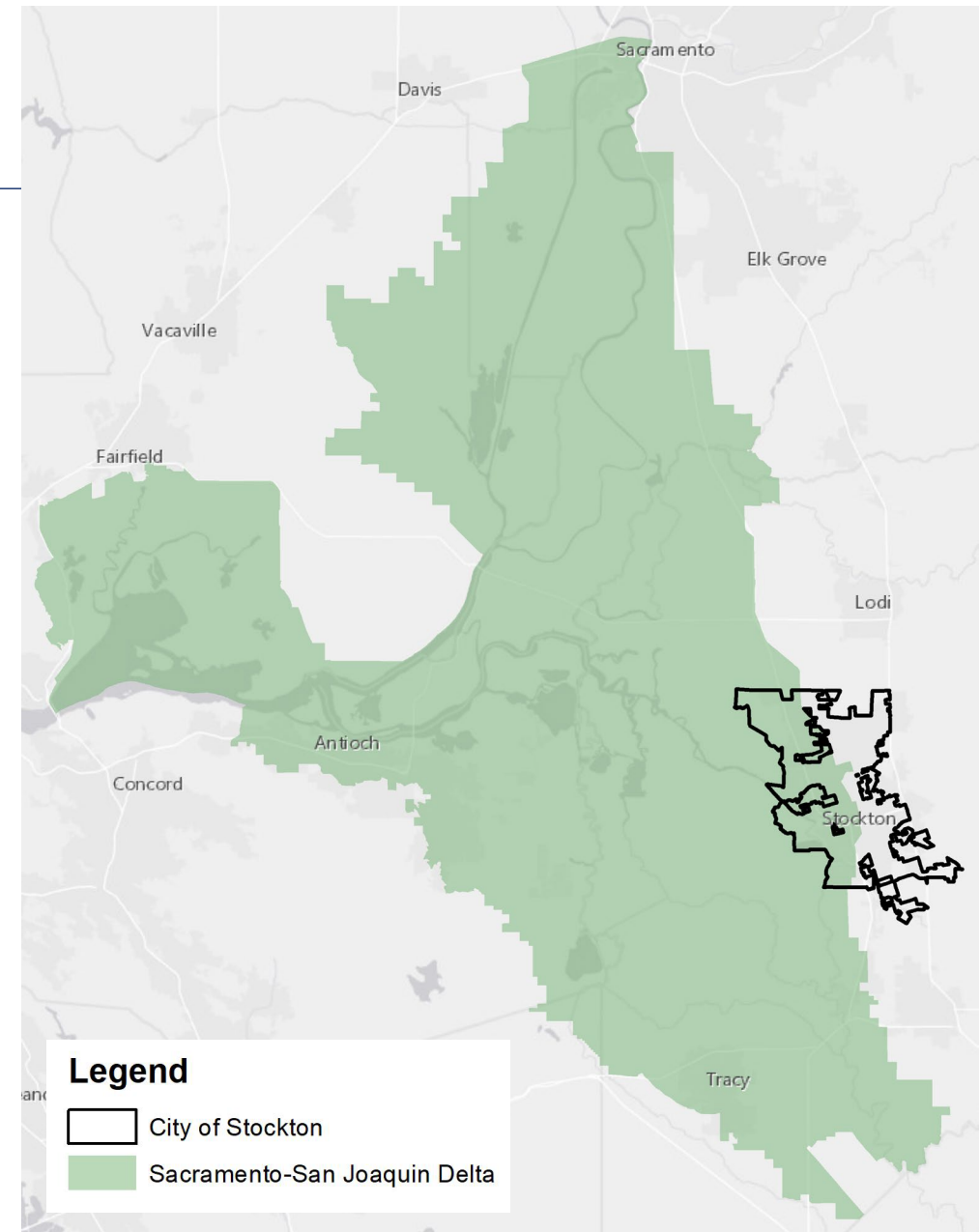
- Covered action authority
- Delta Plan Interagency Implementation Committee
- Performance measures

## Amending the Delta Plan

- Setting priorities for state investment in Delta levees
- Promoting options for water management
- Weaving together a plan for ecosystem enhancement

## Connecting decision-makers with the best science

- Synthesis, peer review, identifying and funding high-priority science



# Council Engagement in Stockton

- **2021 Delta Adapts Workshops and Presentations**

- Fathers and Families of San Joaquin
- Substratum Systems
- Third City Coalition
- Restore the Delta
- Little Manila Rising
- SJCOG
- SJAFC
- Conway Homes Resident Council

- **EJ Expert Group**

- Restore the Delta
- Little Manila Rising

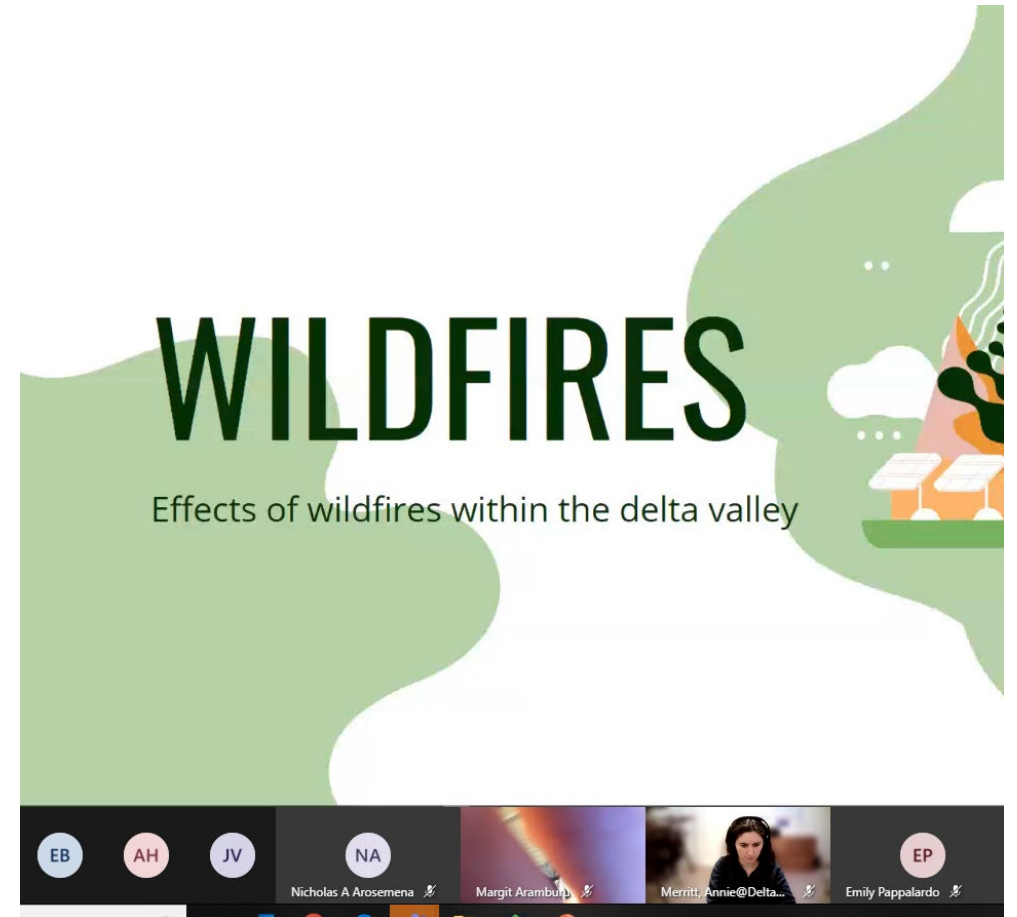
- **Science for Communities**

- Little Manila Rising
- Restore the Delta
- Public Health Advocates

- **Mormon Slough Convening**

- **Other Council initiatives**

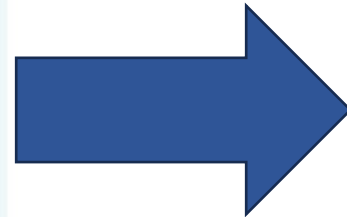
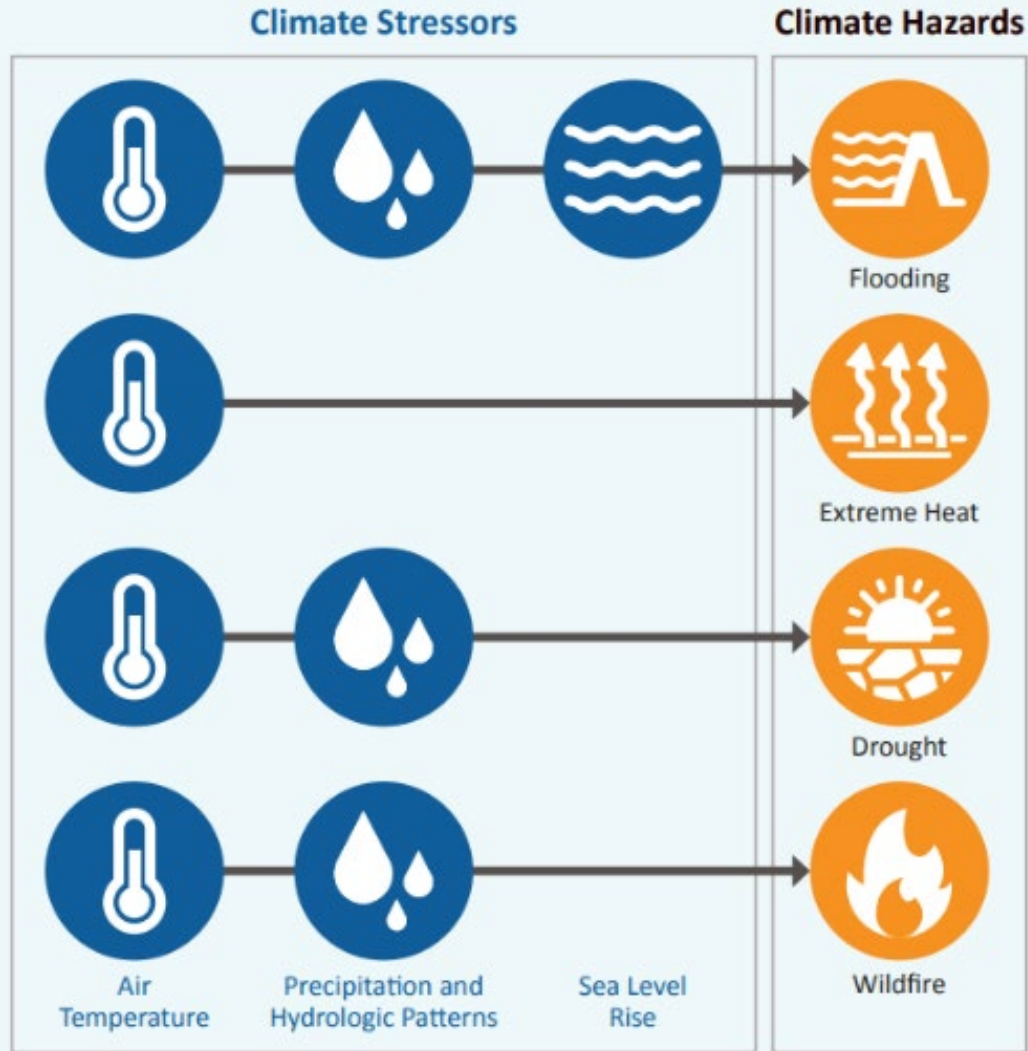
- Adaptive Management Forum
- Restoration Subcommittee Forum
- Other Science Program involvement





# Delta Adapts Overview

## What is the Vulnerability Assessment?



### Stakeholder Input

- Technical focus groups
- Community organizations
- Environmental justice expert group
- Farmers & landowners
- Delta Residents Survey
- Tribes

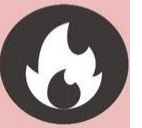


### Vulnerability Assessment Findings

- More flooding will occur
- Less reliable Delta exports
- Episodic water quality declines for in-Delta users
- Increased loss and stress on ecosystems
- More frequent/severe wildfires leading to hazardous AQ conditions
- Decreased agricultural yields



Extreme Heat



Wildfire



Drought



Flooding



**EXTREME  
HEAT**

**By 2050**, increased temperatures in Stockton will lead to:



- **25** extreme heat days per year
- More **unhealthy** ozone days



Increased **cooling costs** for homes and businesses



**Heat stress** on landscapes and ecosystems

Urban areas like Stockton will experience relatively more extreme heat days due to the **urban heat island effect**.



WILDFIRE

**By 2050**, increased temperatures, more frequent drought, and wind changes will:



Increase the size and severity of remote wildfires, which will...



Increase the frequency and duration of **poor air quality days**





FLOODING

**By 2050**, a 100-year flood event in Stockton could impact:



- **29,550** residents
- **80%** live in areas with high social vulnerability



- **2** historic sites
- **2** fire stations
- **10** schools
- **10** parks



- **5** solid waste sites
- **12** contaminated sites
- **2** hazardous waste facilities

# Key Climate Vulnerabilities and Adaptation Priorities in Stockton

## *Stockton is most vulnerable to*



**Very high flood risk:** Stockton is projected to be the most highly exposed city to flooding in the Delta.



**Extreme heat:** Stockton will likely experience five times more extreme heat days by 2050 than what is currently experienced.



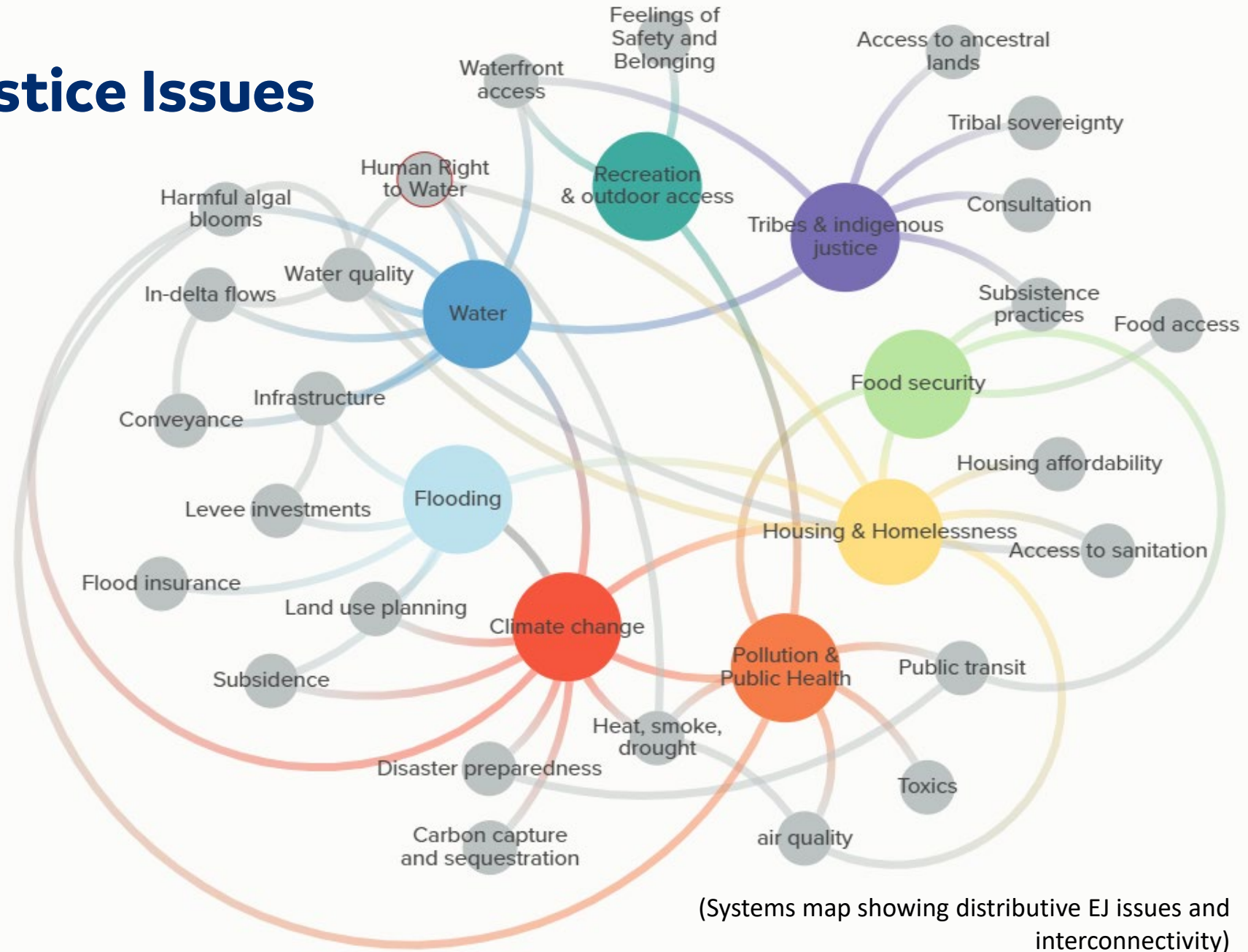
**Wildfire:** Stockton will likely experience more poor air quality events due to increased frequency and severity of remote wildfires.

## Key adaptation priorities

- » Implement multi-benefit projects, e.g. Mormon Slough.
- » Use collaborative thinking and systemwide investments to prepare for future flood risks.
- » Protect vulnerable infrastructure: Highway 99, Stockton Airport, Highway 4.
- » Raise awareness about the need for more funding for flood risk reduction.
- » Make outreach information accessible in communities with language and technology barriers and get residents more involved in adaptation.
- » Coordinate across agency adaptation plans to avoid community participation fatigue.

# Environmental Justice Issues

“Everything is **connected**. When you change one thing, it will change another. We must use that **intersection** to build [broader] community with groups that are **not explicitly focused on the issue at hand.**”





## Example: Pollution exposure & public health inequities

- **Historic redlining** and present-day **land use planning** resulting in disproportionate exposure to environmental harms
- Long-term, generational **health impacts due to pollution exposure**, lack of access to health services, public transport, & healthy food

*“Everything in EJ is intersectional – affordable housing, vulnerable communities, public health, air pollution, inequity.”*

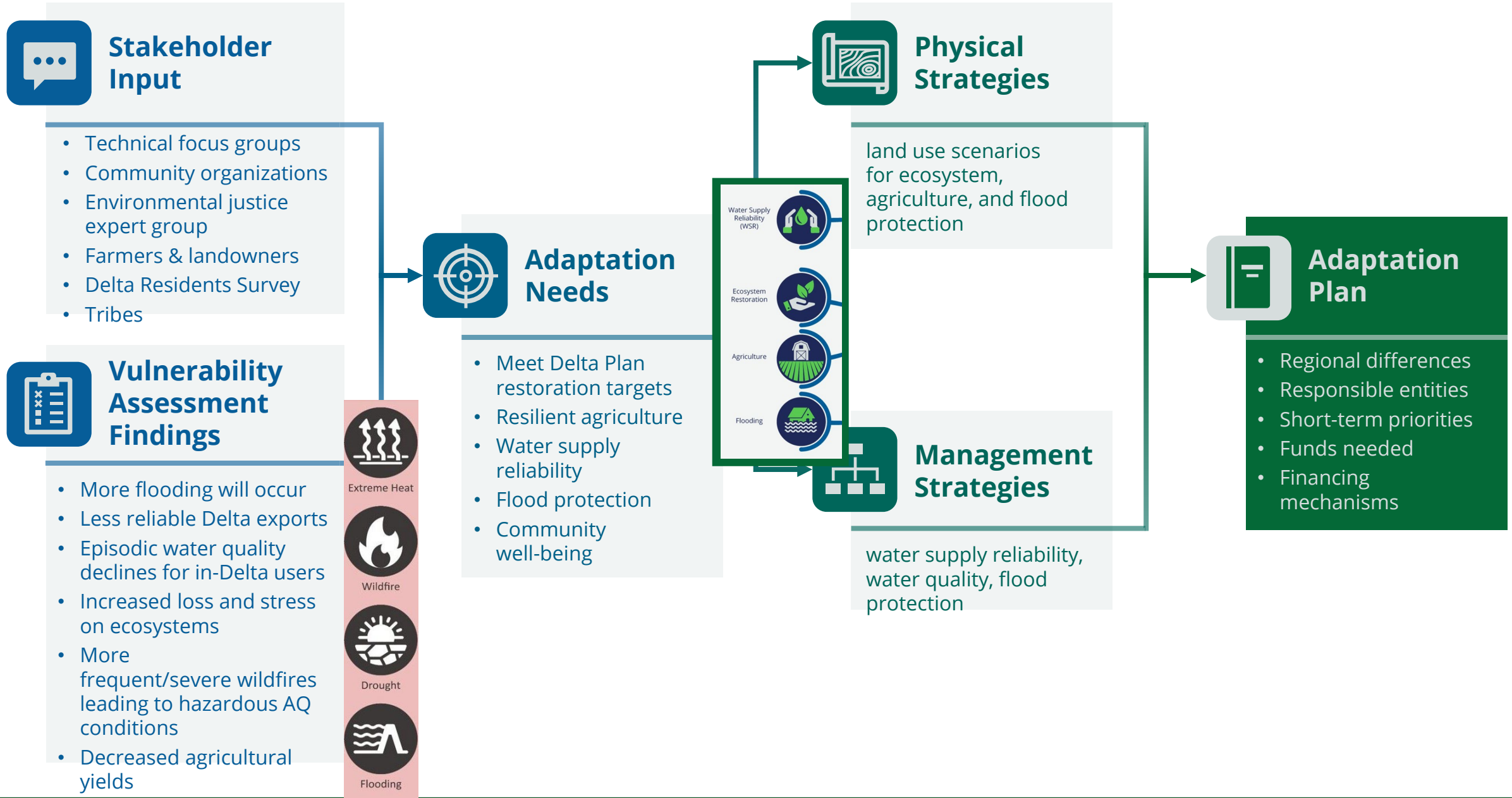
# Equity in Adaptation

- Representational justice
- Prioritize adaptation investments in communities most socially vulnerable to climate impacts
- Culturally appropriate risk communication and education campaigns



Photo: DWR

# Delta Adapts Adaptation Plan





## Discussion Questions

- How would you like the Council to engage with your steering committee on climate adaptation and environmental justice?
- What are your initial reactions to the information presented?
- Do these adaptation priorities and EJ concerns resonate with you?
- Are there other concerns related to climate change in Stockton that you'd like to see reflected in the Adaptation Plan?



# Thank you!

Connect with us



Scan the QR code to subscribe to our listserv



Scan the QR code to visit the Delta Adapts webpage:  
[deltacouncil.ca.gov/delta-plan/climate-change](https://deltacouncil.ca.gov/delta-plan/climate-change)



[Deltacouncil.ca.gov](https://Deltacouncil.ca.gov)



@DeltaCouncil



@deltastewardshipcouncil



Delta Stewardship Council



@deltastewardshipcouncil