

Update on Arvin/Lamont Community Air Monitoring

Arvin/Lamont CSC Meeting
May 28, 2025

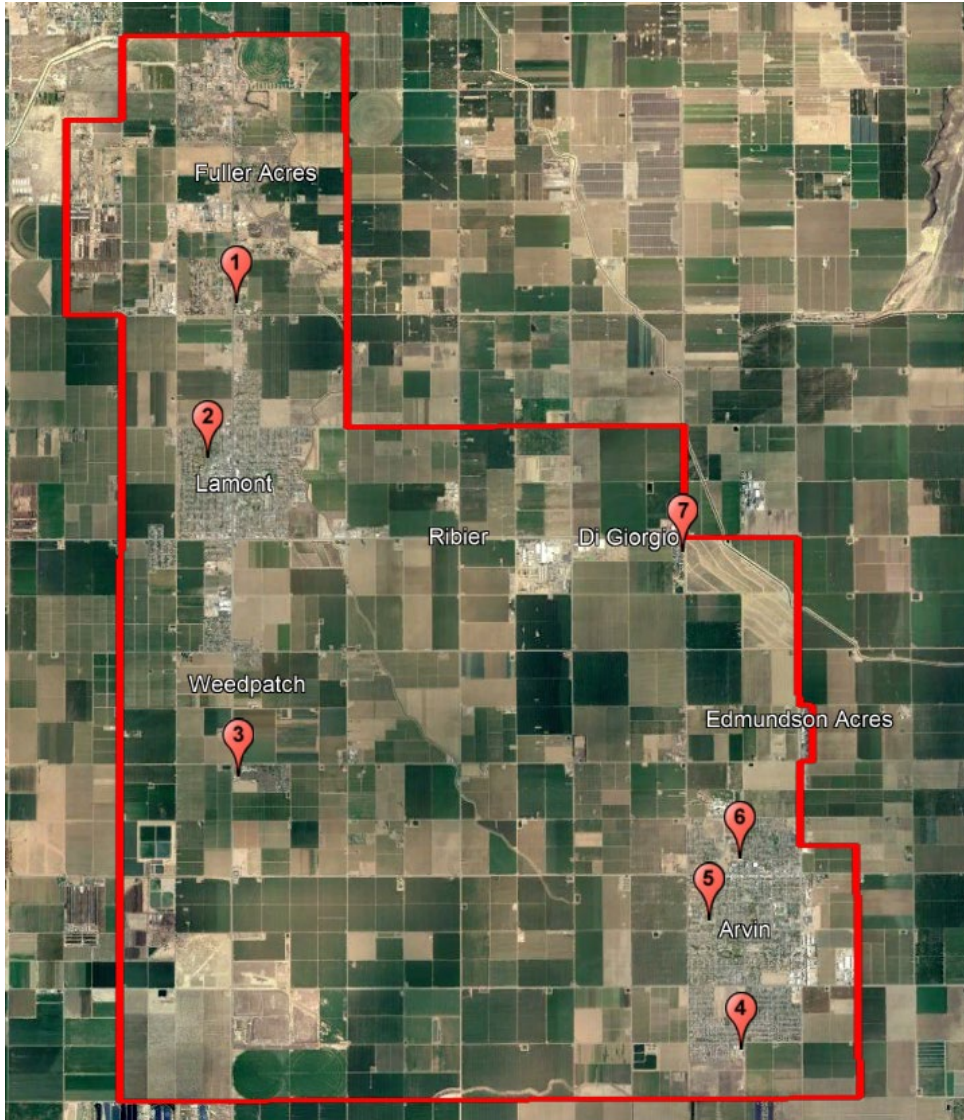
Air Monitoring Update

Status of Community Air Monitoring Plan
Implementation

Review Air Monitoring Data Collected

Questions and Comments

CAMP Implementation Status



#	Location	Monitoring	Done
1	Mountain View Middle School	PM2.5, BTEX, H2S, SO2	Yes
2	Alicante Elementary	PM2.5, BTEX, H2S, SO2, NOx, Black Carbon	In progress
3	Sunset Middle School	PM2.5	Yes
4	El Camino Real Elementary School	PM2.5	Yes
5	Bear Mountain Elementary School	PM2.5	Yes
6	Arvin Community Services District	PM2.5, H2S, SO2, NOx, Ozone, CO, Black Carbon, Toxics	Yes
7	Di Giorgio & Comanche	PM2.5	In progress

Community Air Monitoring Platforms



Community Air Monitoring Platforms (cont'd)



Ongoing Community Air Monitoring

- District continuing to conduct localized air monitoring in the Arvin/Lamont AB 617 community
- Looking for an acceptable location to deploy PM2.5 monitor near Di Giorgio and Comanche
- Working with Lamont School District to deploy air monitor at Alicante Elementary School
 - Working on electrical infrastructure and final placement of equipment
- Air monitoring van available to monitor pollutants in areas of interest
- Lab analysis of air samples for PM2.5 and VOC speciation being conducted at Arvin CSD trailer site

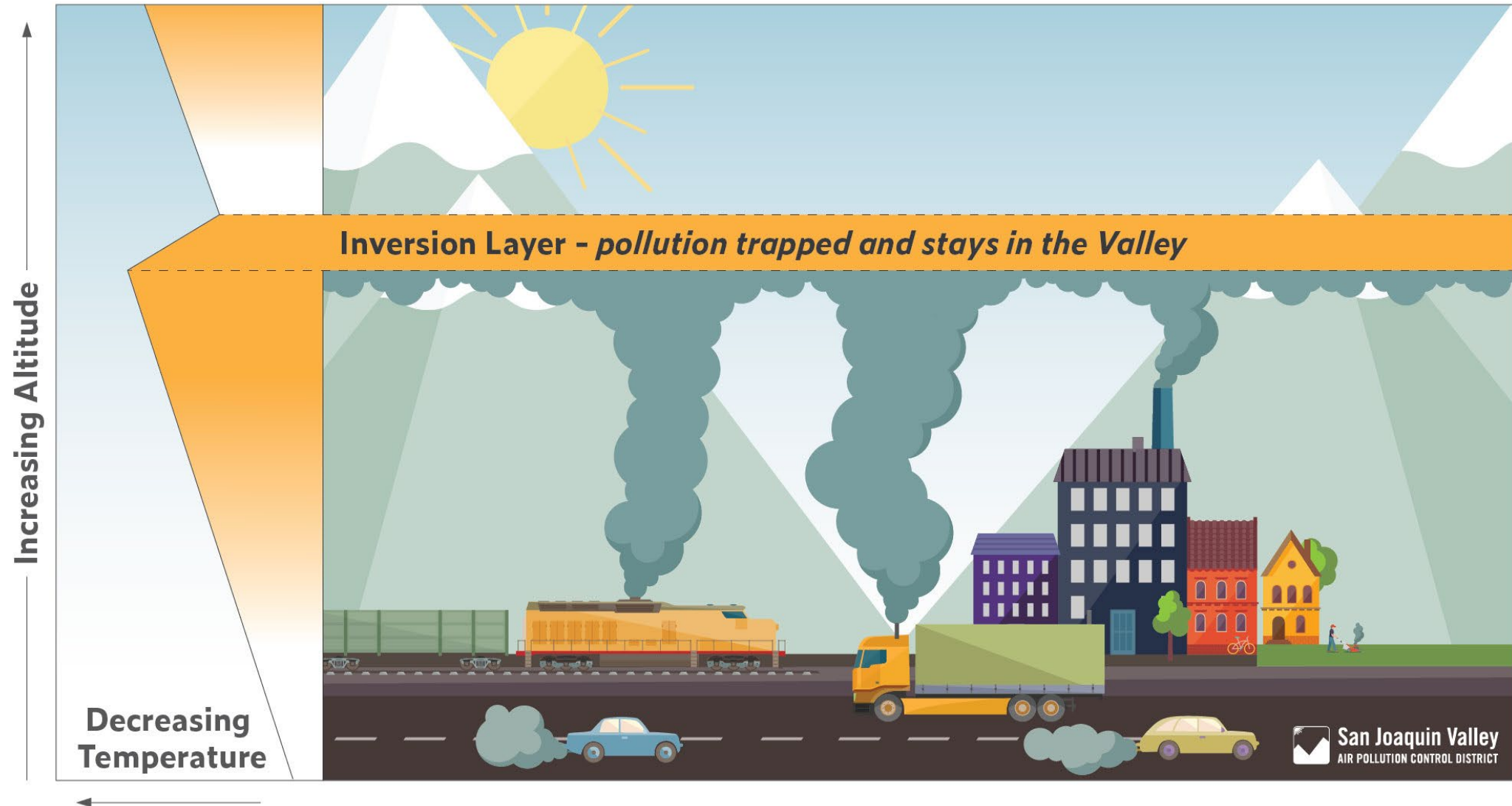
Air Monitoring Update Summary

Slightly higher PM2.5 levels than previous year quarters

Cold, dry, and stagnant conditions in January contributed to elevated PM2.5 levels

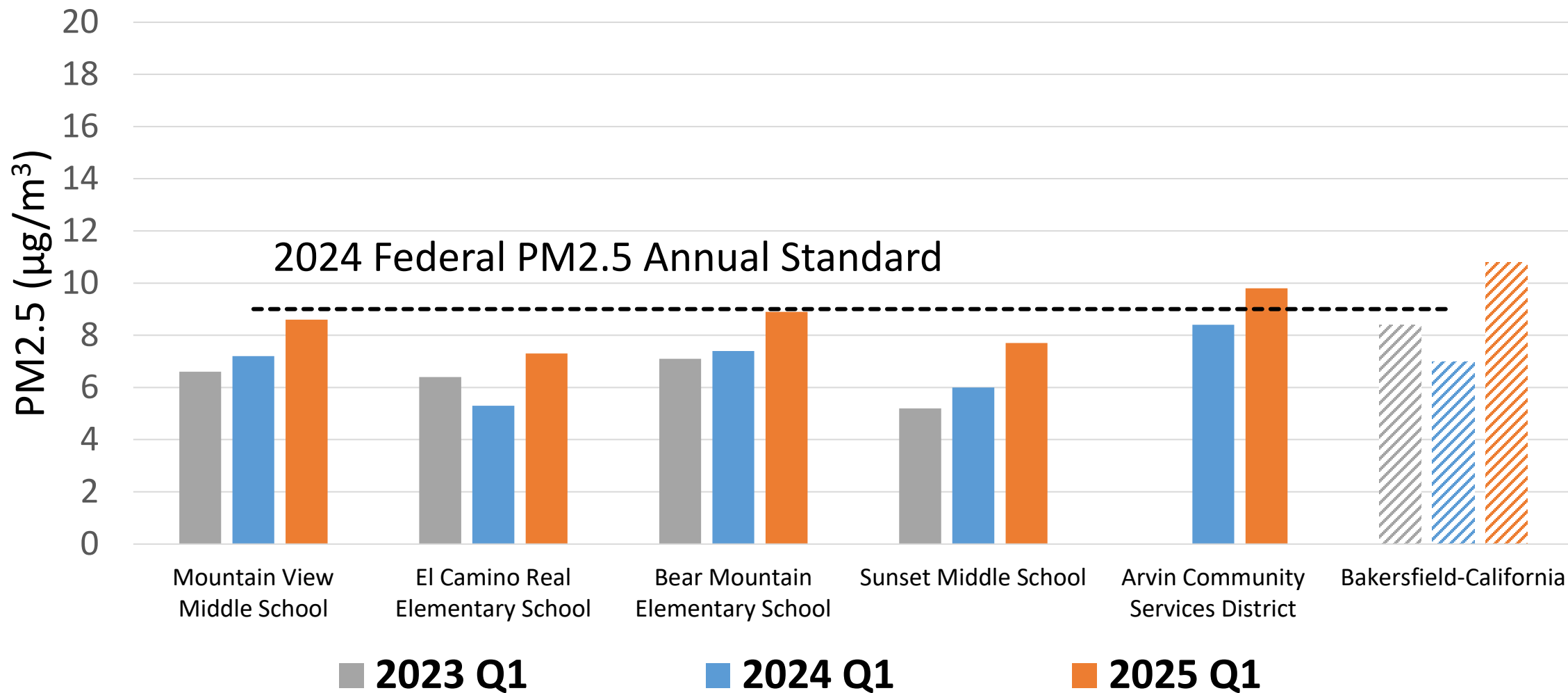
Air monitoring data available online at your community portal

What causes PM2.5 levels to be higher in the winter?



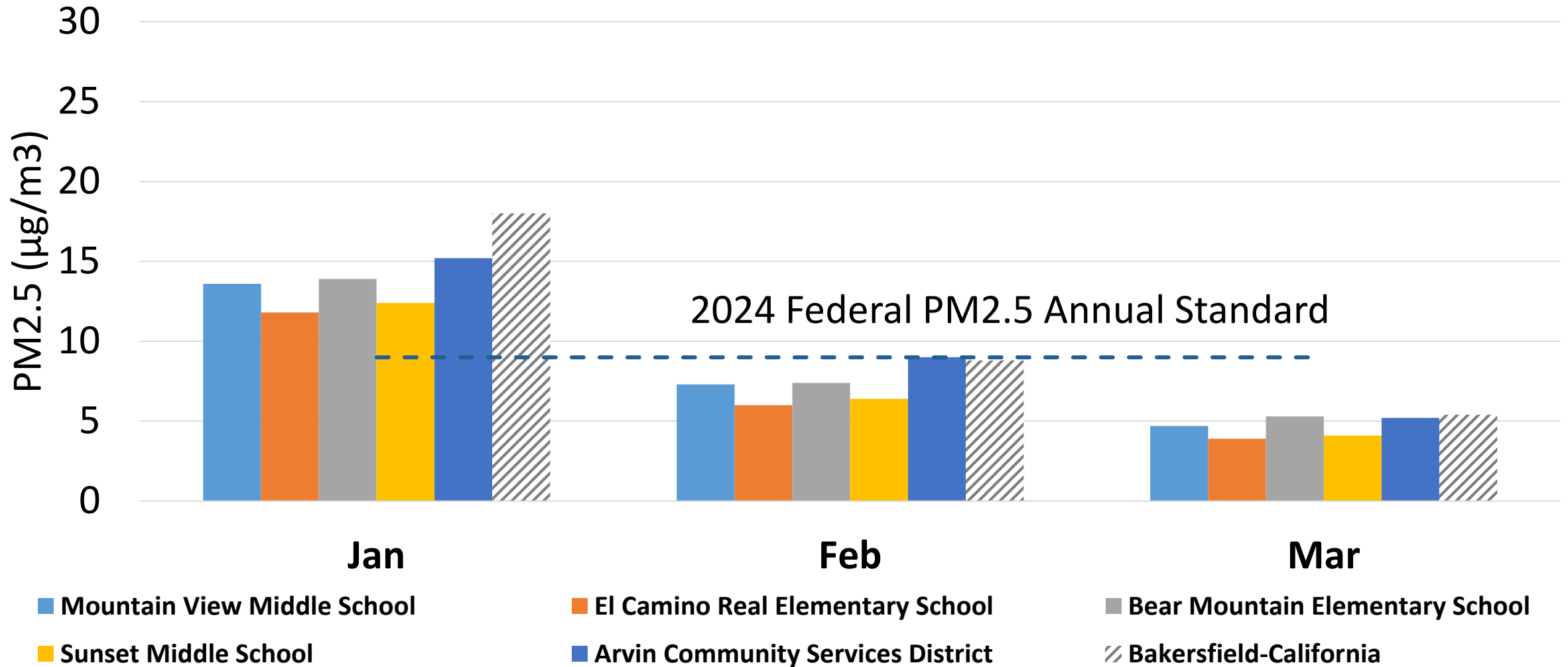
PM2.5 Quarterly Average Comparison

2025 Q1 PM2.5 levels slightly higher than in 2024



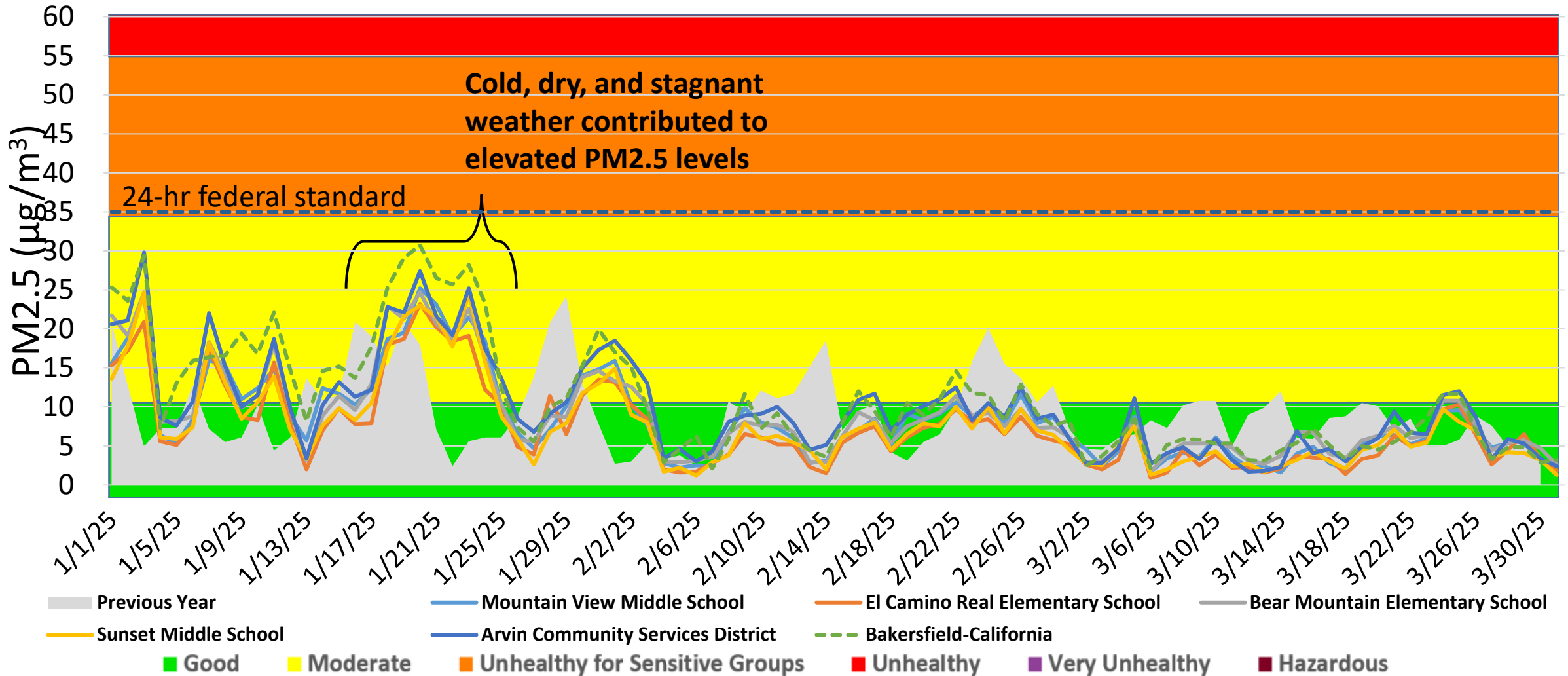
Monthly Average PM2.5 Comparison

Stagnation contributed to elevated PM2.5 in January



January - March PM2.5 Daily Average Comparison

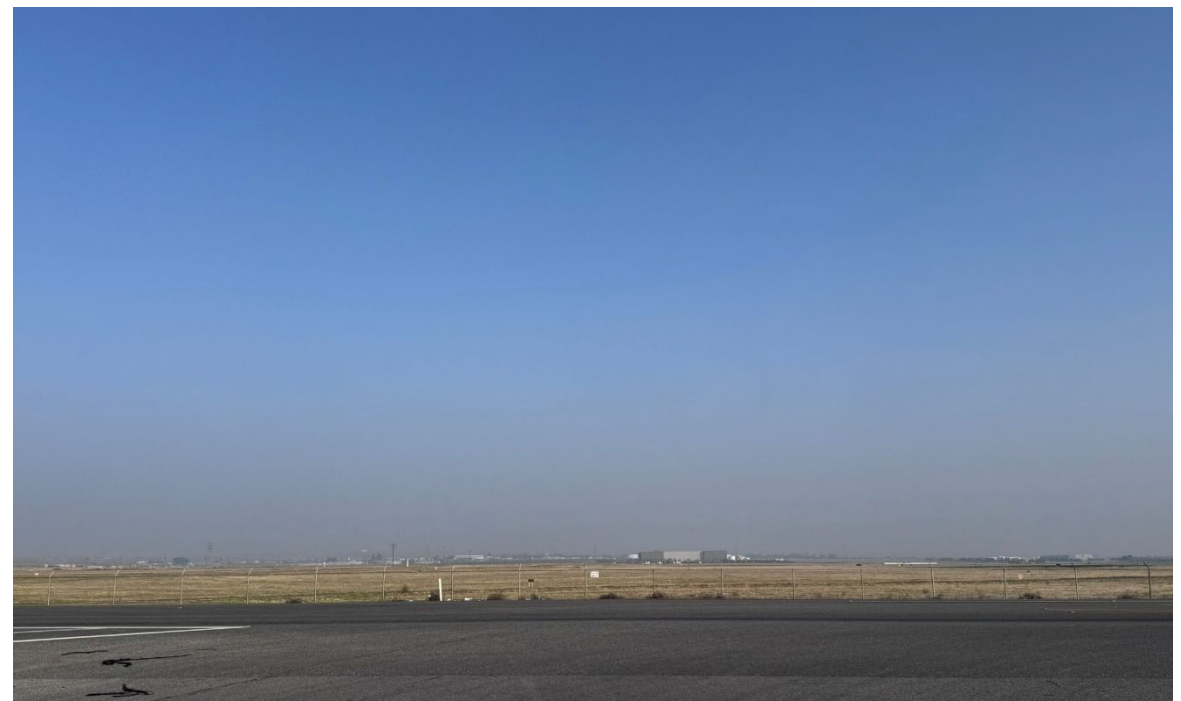
Cold, dry, and stagnant weather contributed to elevated PM2.5 in January



Stagnant Conditions in the Winter



NASA Worldview and Images from 12/5/2024

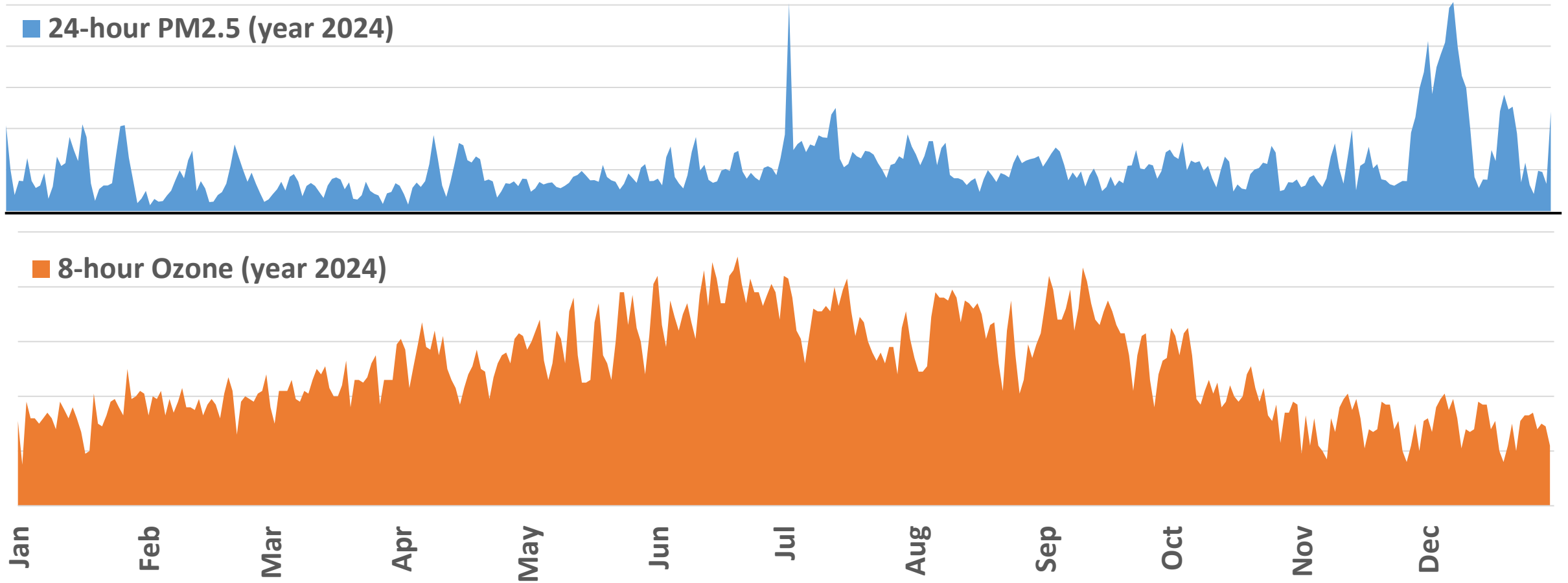


Summer Air Pollution: Ozone

- Ozone primary pollutant during summer
- Formed when sunlight and heat mix with nitrogen oxides (NOx) and volatile organic compounds (VOCs)
- NOx and VOCs created by cars, trucks, trains, and other petroleum based transportation as well as factories



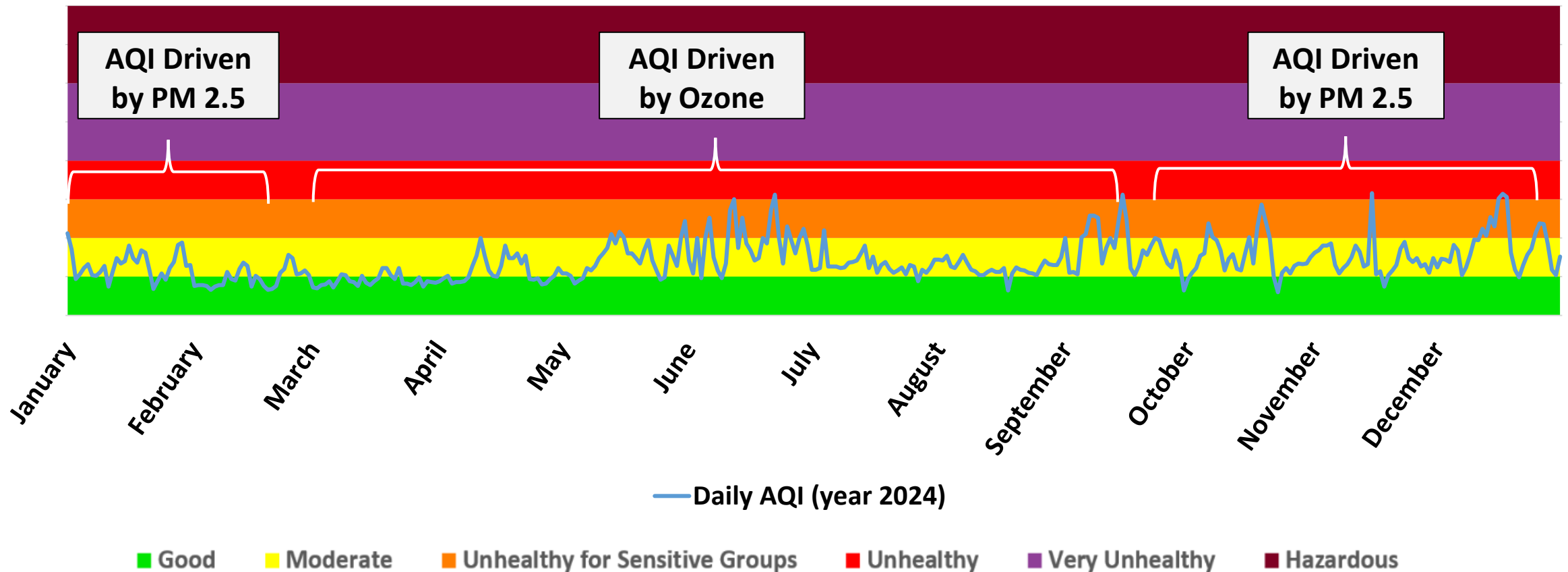
Seasonal Changes in PM2.5 and Ozone for Arvin/Lamont



Generally, PM2.5 is higher in winter, and ozone is higher in summer

Seasonal Air Quality for Arvin/Lamont

Air Quality Index (AQI) driven by PM2.5 in winter months and ozone in warmer months



How can the District make sure the community knows that we expect worse air quality?

 San Joaquin Valley Air Pollution Control District ✓
Outreach & Communications Representative Michelle Rivera · Just now

Trash burning is illegal and releases dangerous chemicals into the air. Exposure to such chemicals can cause respiratory harm. If you suspect unlawful burning near you, let us know, and we'll investigate: <http://valleyair.org/complaints>.

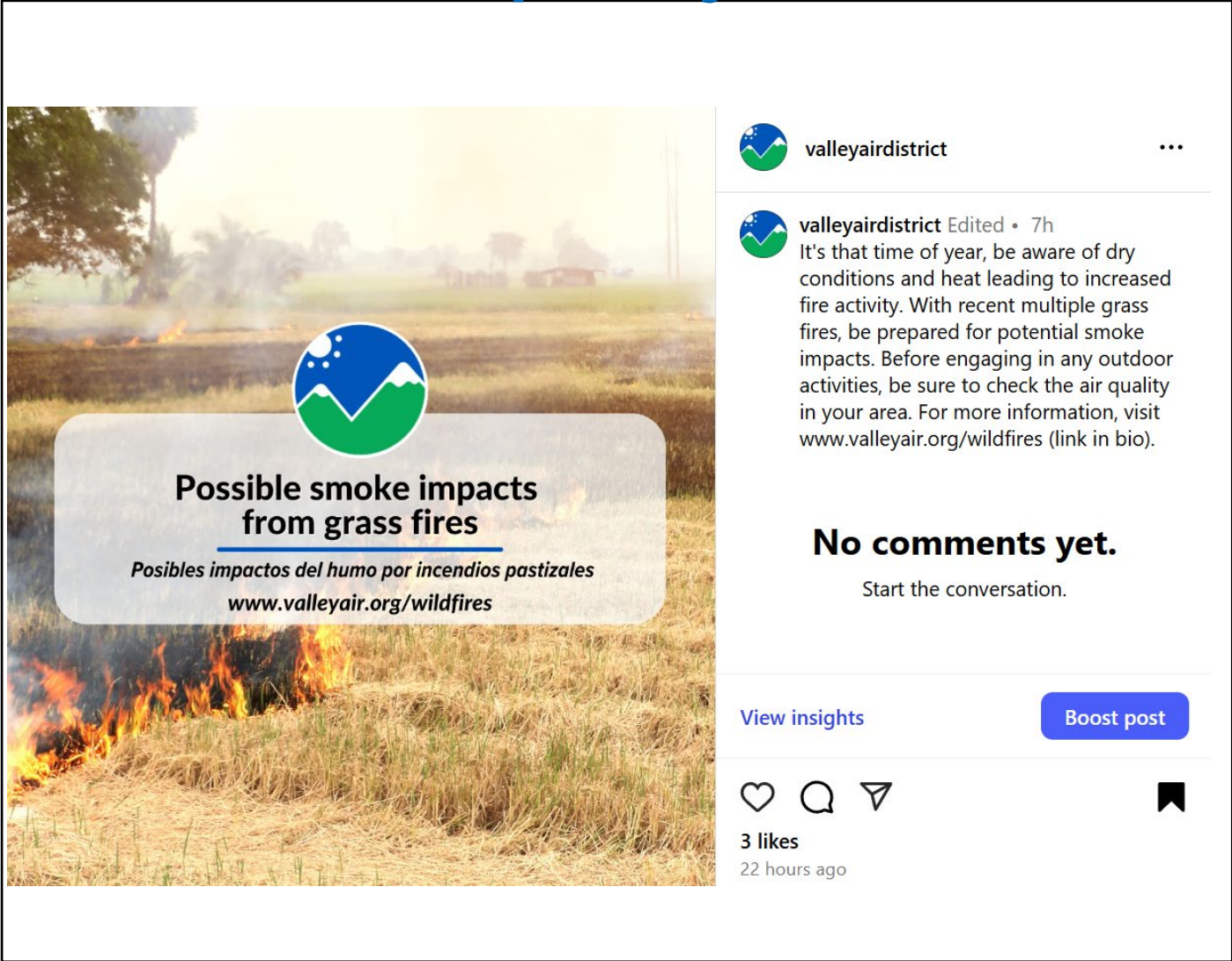



BURNING TRASH
QUEMAR BASURA


Including Yard Waste
Includendo Desechos de Jardín

IS ILLEGAL!
¡ES ILEGAL!

 www.valleyair.org/complaints







 valleyairdistrict

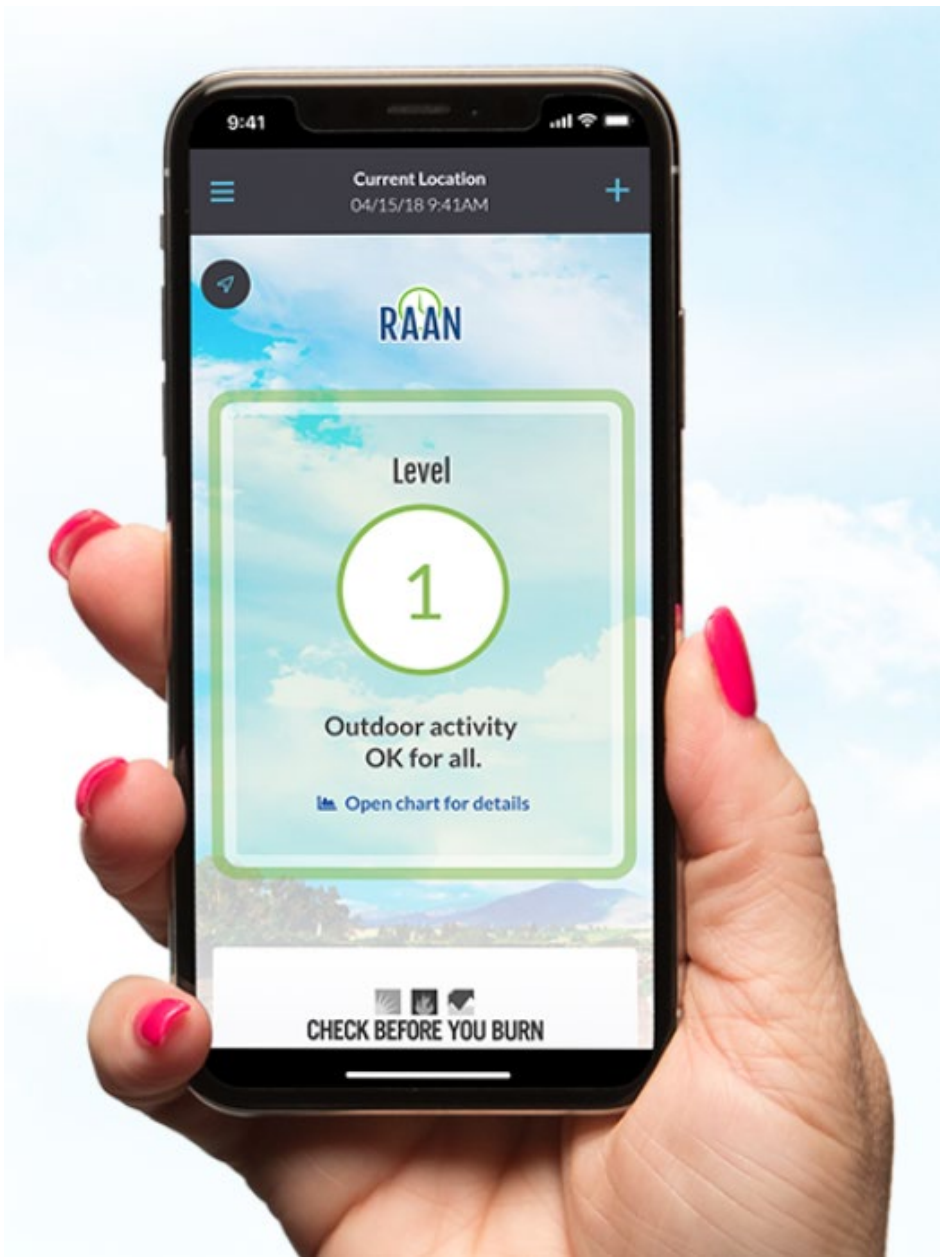
 valleyairdistrict Edited · 7h
It's that time of year, be aware of dry conditions and heat leading to increased fire activity. With recent multiple grass fires, be prepared for potential smoke impacts. Before engaging in any outdoor activities, be sure to check the air quality in your area. For more information, visit www.valleyair.org/wildfires (link in bio).

No comments yet.
Start the conversation.

[View insights](#) [Boost post](#)

3 likes
22 hours ago



How to File an Air Pollution Complaint

Complaints may be filed online, by phone, or by using the Valley Air app on your smart phone

- Complaints are responded to 365 days a year
- Your information is confidential
- Filing a complaint will put you in touch with an Air Quality Inspector assigned to the complaint

Tulare, Valley portion of Kern

[\(800\) 926-5550](tel:(800)926-5550)

valleyair.org/complaints

Comments/Questions?