

# Update on Shafter Community Air Monitoring

Shafter CSC Meeting  
Quarter 3 (July - September 2025) Update

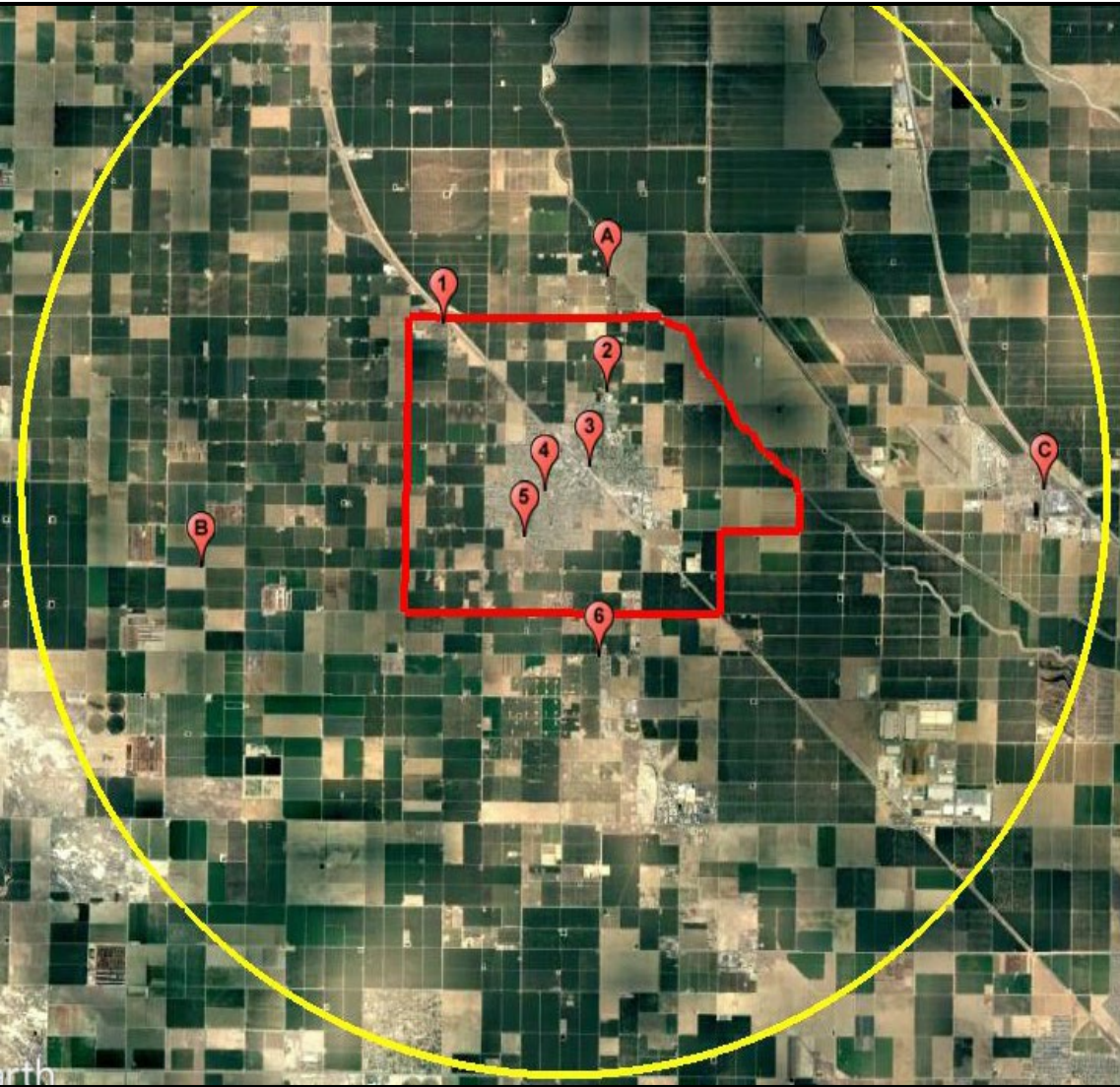
# Air Monitoring Update

Status of Community Air Monitoring Plan Implementation

Review Air Monitoring Data Collected

Questions, Comments, and Recommendations

# CAMP Implementation Status



#	Location	Monitoring	Done
1	Farm Labor Center	Monitoring Trailer	x
2	Sequoia Elementary	Multi-Pollutant	x
3	Shafter DMV	PM2.5	x
4	Golden Oak Elementary	PM2.5	x
5	Grimmway Academy	PM2.5	x
6	La Colonia	PM2.5	x
A	North of Shafter in agriculture area	Monitoring Van	x
B	West of Shafter near dairy operations	Monitoring Van	x
C	East of Shafter near Hwy 99 & Lerdo Hwy	Monitoring Van	x

# Community Air Monitoring Platforms



# Community Air Monitoring Platforms (cont'd)



# Community Air Monitoring Platforms (cont'd)



# Ongoing Community Air Monitoring

- District continuing to conduct localized air monitoring in the Shafter community
- Deployed final PM2.5 monitor at La Colonia on September 18<sup>th</sup>, 2025 at La Colonia Pocket Park
- Air monitoring van available to monitor pollutants in areas of interest of the community and near recommended site locations for network design
- Lab analysis of air samples continues for PM2.5 and VOC classification
- Shafter DMV Site was down due to a minor fire. After the facility made the necessary repairs PM2.5 was reestablished at the site on 11/3/25.

# Shafter Air Monitoring Update

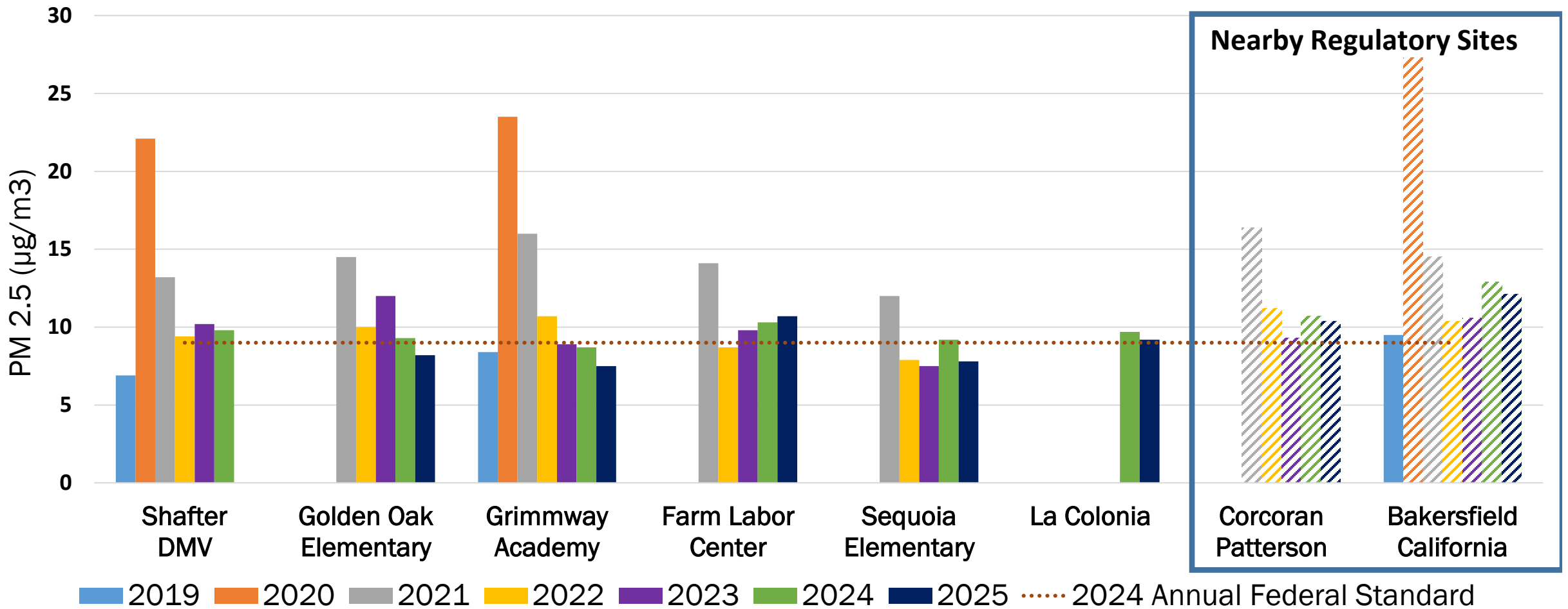
PM2.5 during quarter 3 shows general improvement over the years

Daily PM2.5 remains below 24-hour federal standard

Air monitoring data available online at your community portal

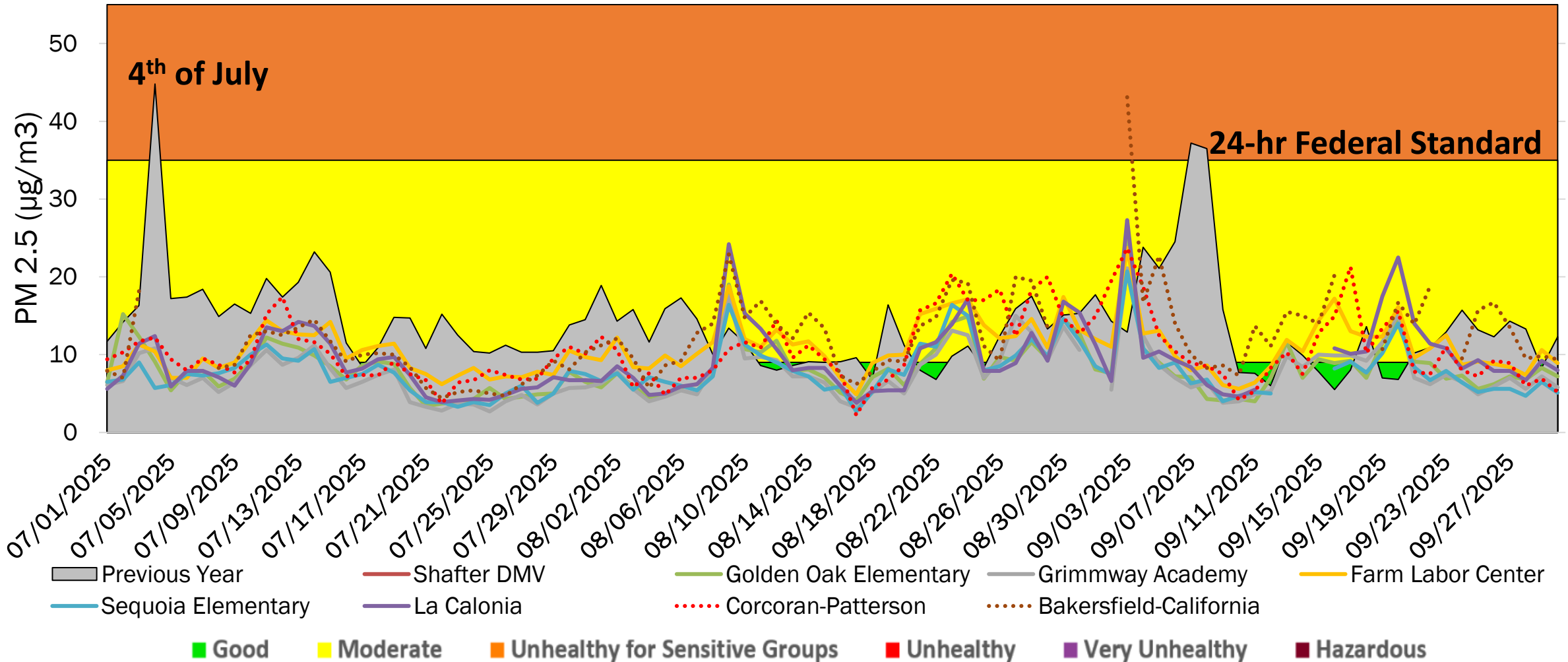
# PM2.5 Quarterly Average Comparison

Generally improved air quality over the years

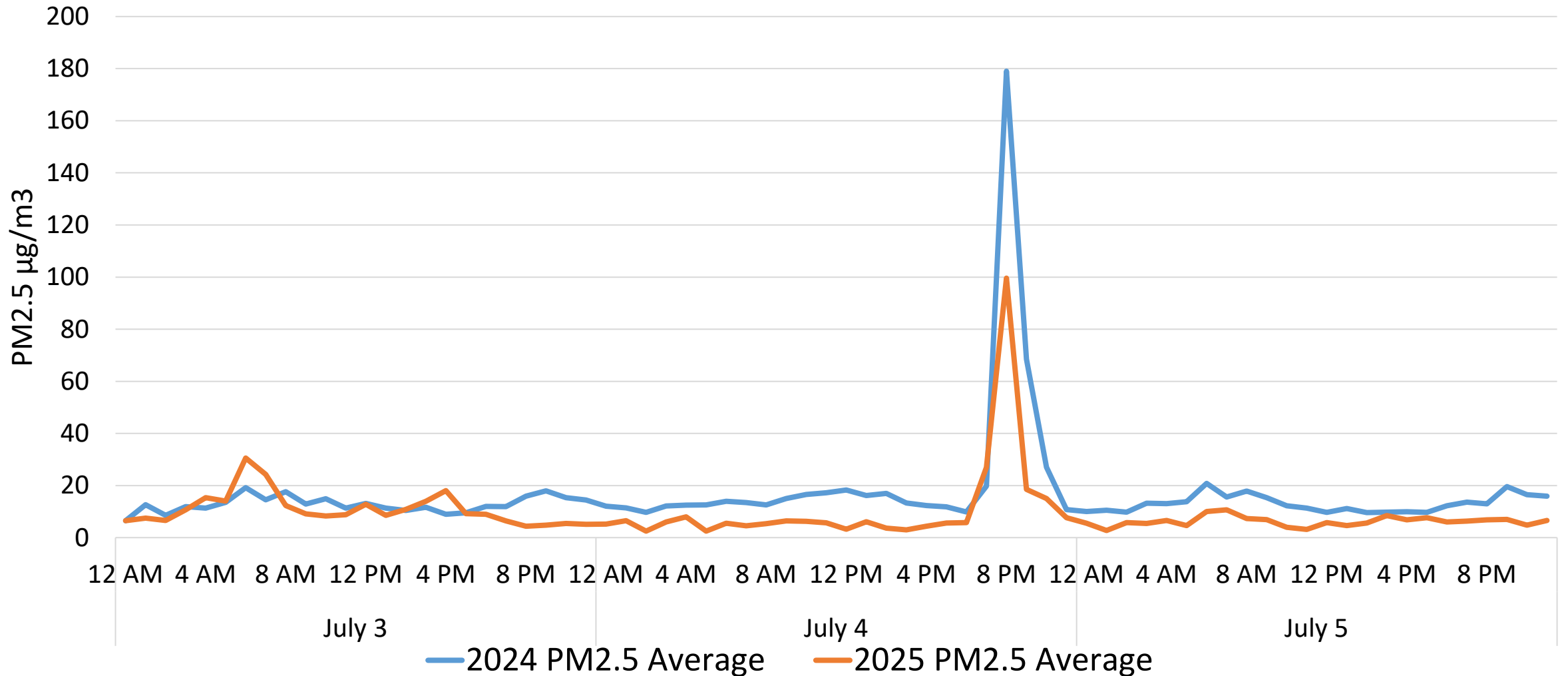


# PM2.5 Daily Averages

PM2.5 within Good and Moderate range and below 24-hour Federal Standard



# July 3<sup>rd</sup> – 5<sup>th</sup> 2024 vs 2025

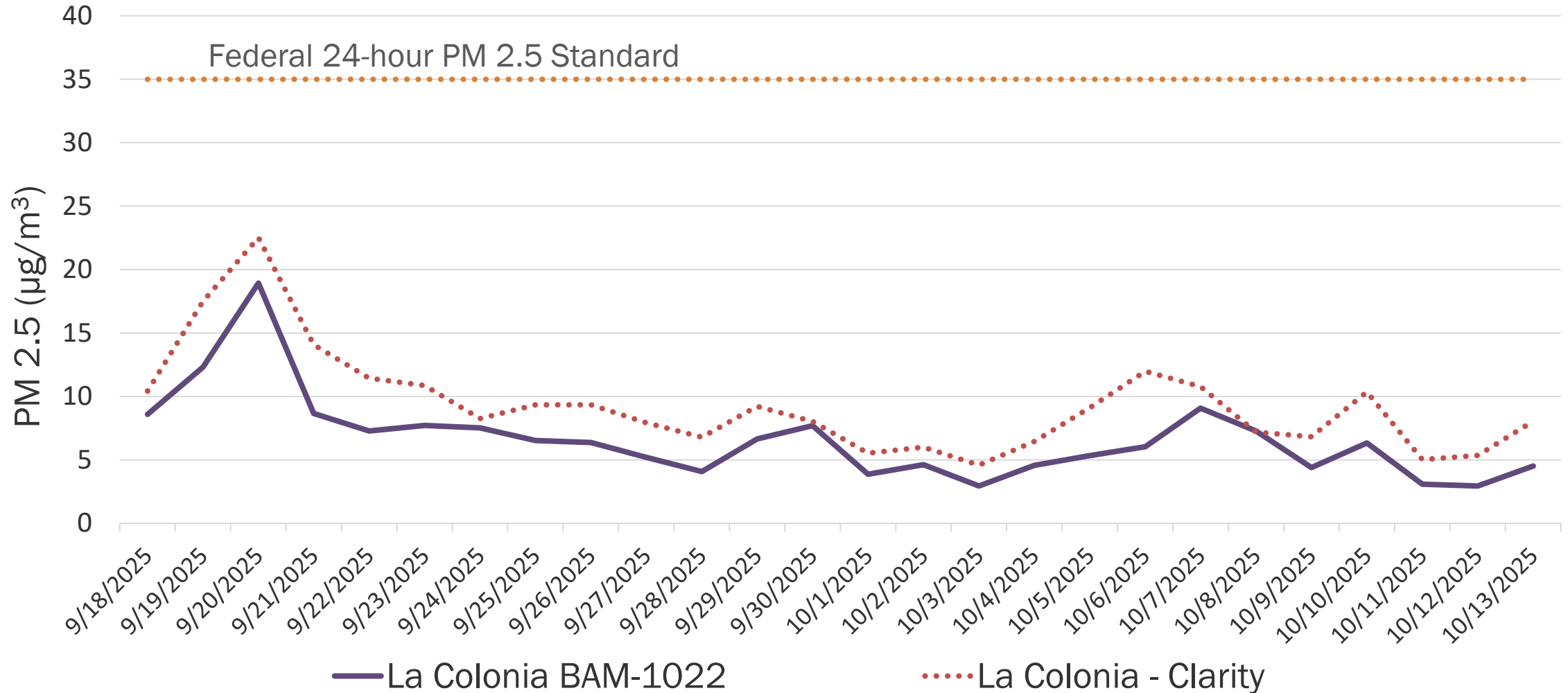


# La Colonia BAM-1022

- On September 18, 2025 a PM2.5 monitor was installed to replace the low cost air sensor that was deployed in July 2024
- Once installed, we compared the data from the low cost air sensor against the new monitor and saw that they followed the same trend but the low cost air sensor averaged higher



# La Colonia BAM-1022 vs Clarity (LCS) Daily Averages



# Communicating Changes in Air Quality



For immediate release 06/30/2025

Attn: Local news, weather, and assignment editors

**Media Contact**  
Heather Heinks (559) 994-7591

**Spanish-language Contact**  
Michelle Rivera (559) 230-6547

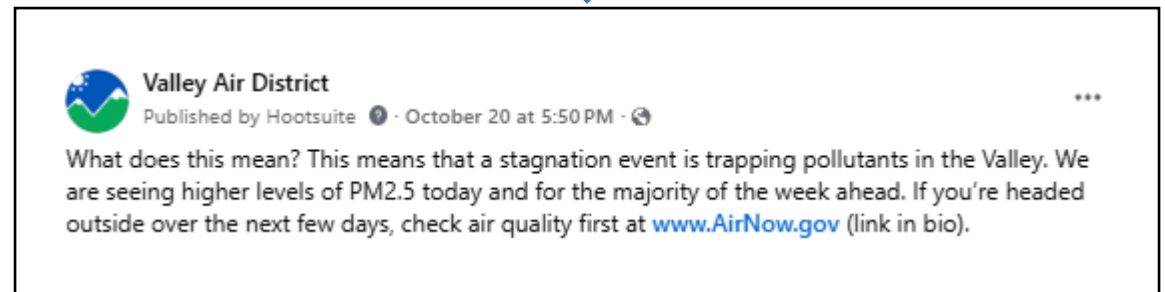
## Fireworks Increase Air Pollution and Risk Public Health

*Valley Air District Urges Residents to Prioritize Health and Safety this 4th of July*

The Valley Air District is urging residents to limit using personal fireworks this 4th of July due to their harmful impact on air quality and public health. Fireworks emit dangerous levels of fine particulate matter (PM2.5) which includes soot, ash, and heavy metals. These pollutants can lead to health problems, especially for young children, older adults, and people with respiratory illnesses. In addition to impacting air quality, fireworks present significant safety risks and contribute to noise pollution, often resulting in injuries, fires, and distress for pets, wildlife, veterans and community members.




- News releases are issued before known and expected high pollution days
- District posts updates to social media sites like Facebook, X, and Nextdoor
- Keep health departments and schools notified



# Communicating Changes in Air Quality

**San Joaquin Valley Air Pollution Control District** ✓  
Communications Representative Danny Gonzalez • 22 Aug

Smoke from the Coffee Pot Fire in Tulare County is expected to affect the foothills and mountainous communities, and eastern parts of Madera, Fresno, and Tulare counties, as well as the Valley portion of Kern County. Before engaging in any outdoor activities, be sure to check the air quality in your area. For more information, visit [www.valleyair.org/wildfires](http://www.valleyair.org/wildfires).



**Wildfire Impact Update:**  
Possible smoke impacts from wildfires around the state

**Actualización sobre el impacto de los incendios forestales:**  
Posibles impactos del humo de incendios forestales en todo el estado

[www.valleyair.org/wildfires](http://www.valleyair.org/wildfires)

Wildfires  
valleyair.org

Posted to Subscribers of San Joaquin Valley Air Pollution Control District in 4 areas

19 • 53,511 Impressions

**San Joaquin Valley Air Pollution Control District** ✓  
Outreach & Communications Manager Heather Hei... • 37 min ago • Edited

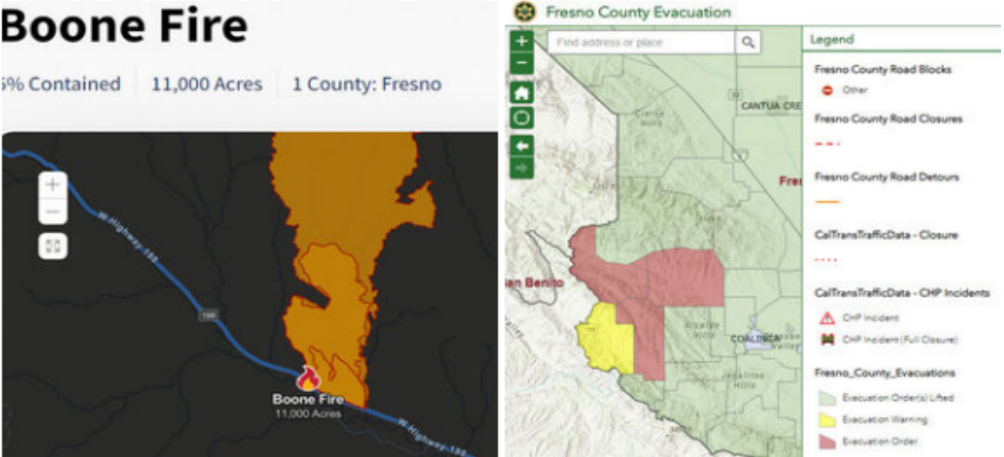
-> Resources to help protect you from wildfire smoke <-

Neighbors – we're on day two of the Boone Fire (near Highway 198 and Boone Lane) and smoke is impacting your area. If you can see ash and smell smoke, you are being impacted by particulate matter pollution and should find an air conditioned/filtered space or leave the area. The District has a wildfire resource page that can keep you up to date on air quality conditions and fire conditions. [www.valleyair.org/wildfires](http://www.valleyair.org/wildfires)

The Valley Air District team in partnership with CCEJN will be in the Coalinga area TODAY (9-4-2024/11am - 2pm) helping residents sign up for our Clean Air Rooms program. You can sign up directly right now at [www.valleyair.org/roompurifier](http://www.valleyair.org/roompurifier) or visit us today and we'll help you sign up.

Iglesia Apostolica de la Fe en Cristo Jesus  
401 N Coalinga St.  
Coalinga CA 93210

**Boone Fire**  
9% Contained | 11,000 Acres | 1 County: Fresno

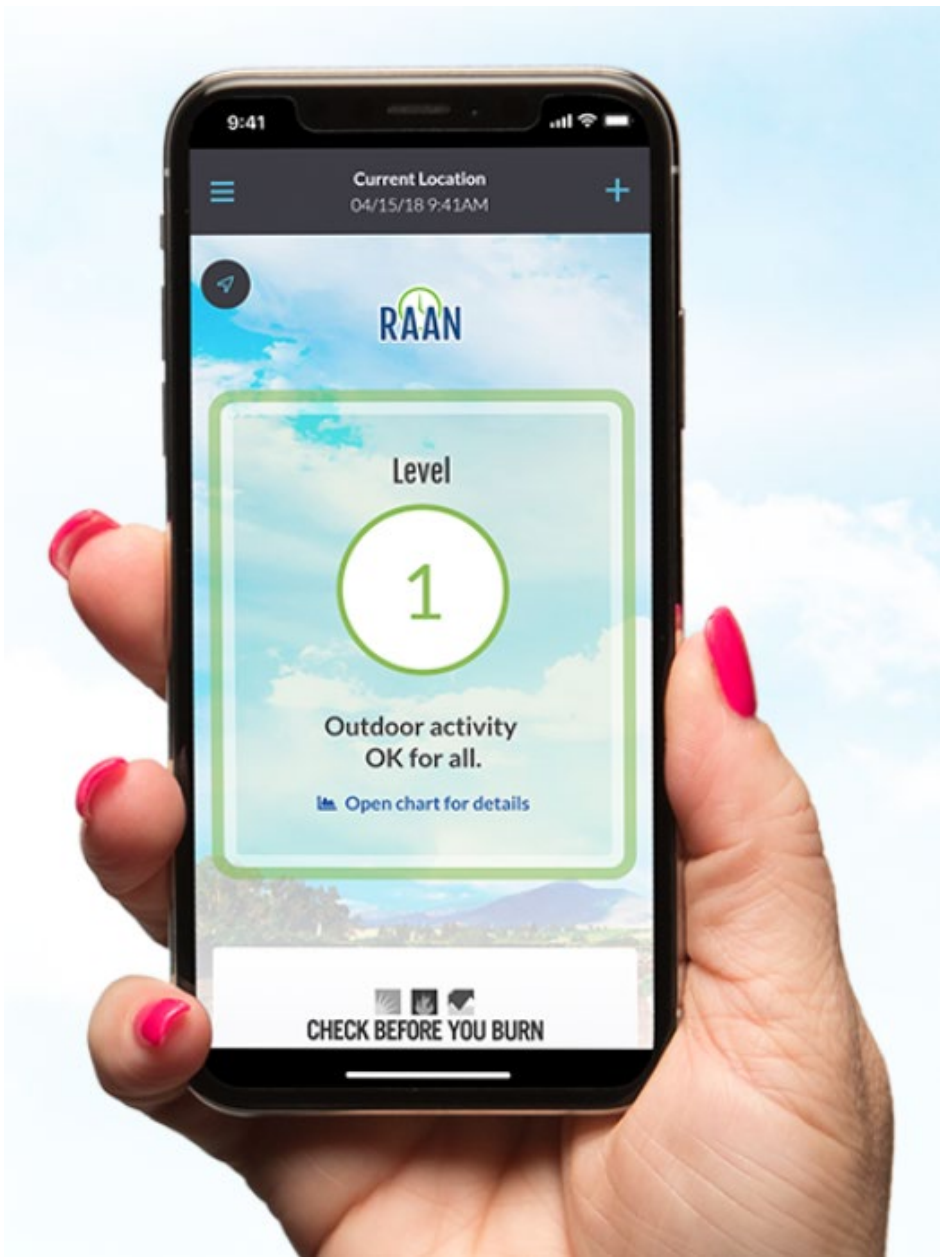


**Fresno County Evacuation**

Find address or place

Legend

- Fresno County Road Blocks
- Other
- Fresno County Road Closures
- Fresno County Road Detours
- CalTransTrafficData - Closure
- CalTransTrafficData - CHP Incidents
- CHP Incident
- CHP Incident (Full Closure)
- Fresno County Evacuations
- Evacuation Order (Lined)
- Evacuation Warning
- Evacuation Order



# How to File an Air Pollution Complaint

Complaints may be filed online, by phone, or by using the Valley Air app on your smart phone

- Complaints are responded to 365 days a year
- Your information is confidential
- Filing a complaint will put you in touch with an Air Quality Inspector assigned to the complaint

Tulare, Valley portion of Kern

 [\(800\) 926-5550](tel:(800)926-5550)

[valleyair.org/complaints](https://valleyair.org/complaints)

# Community Air Quality Data

- District AB 617 webpage at: <http://community.valleyair.org/community-air-monitoring>
  - Real-time community air monitoring data
  - Air monitoring data from vans
  - Quarterly reports
- CARB's statewide air quality data portal (AQview) displays and provides community air monitoring data from AB 617 communities
  - AQview website located at: <https://ww2.arb.ca.gov/es/community-air-quality-portal>
  - Air quality data from Valley AB 617 communities available at this website
  - Development ongoing, new features to be added

# Comments/Questions?