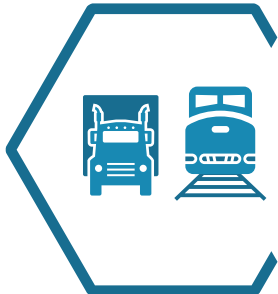


# AB 617 Fresno CERP At-A-Glance

On the following pages you will find the top air quality concerns as identified by the South Central Fresno Community Steering Committee and the strategies developed to address those concerns. Please refer to the full CERP document to fully understand the community, the steering committee, the air quality challenges, the CERP strategies and other issues. This document is simply a very small snapshot of the larger document.

## Trucks & Trains



Truck rerouting

Encourage clean fueling infrastructure

Replace old diesel locomotives with cleaner ones

Replace trucks with zero and near zero emission trucks

Replace old diesel train equipment with cleaner equipment

Reduce idling of trucks by providing charging infrastructure

More enforcement of anti-idling

Promote the use of biodiesel and renewable diesel fuels

Replace old school buses with zero and near zero emission buses

## High Polluting & Idling Cars



Host events to repair old high polluting cars

Reduce cars idling through education

Replace old cars with electric or hybrid electric cars

Train electrical vehicle mechanics

## Residential Burning



Replace old fireplaces and wood burning devices with cleaner devices

Reduce trash burning through enforcement

More enforcement of "No Burn" days

Reduce trash burning through education

## Agricultural Operations



Replace open burning with clean alternatives

Reduce exposure to pesticides

## Land-Use/Industrial Development



Encourage things that reduce the need for cars

Work with the city, county and community on land use issues

Educate the public on land use tools

## Industrial Processes



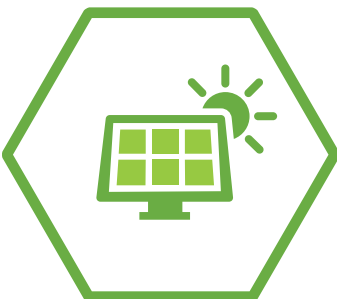
Reduce emissions from industries through regulations

Reduce emissions from industries through new incentives

Increase inspections at industries

Self-inspections at gas stations

## Install More Solar



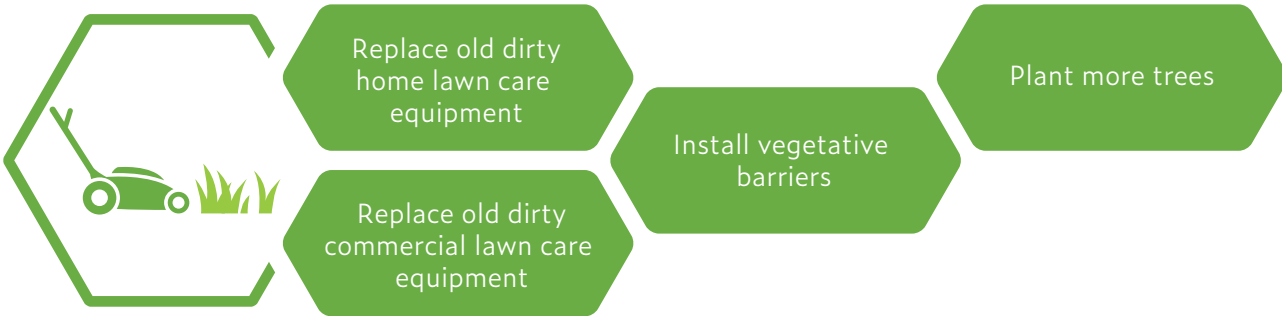
## Reduce Emissions from Restaurant Cooking



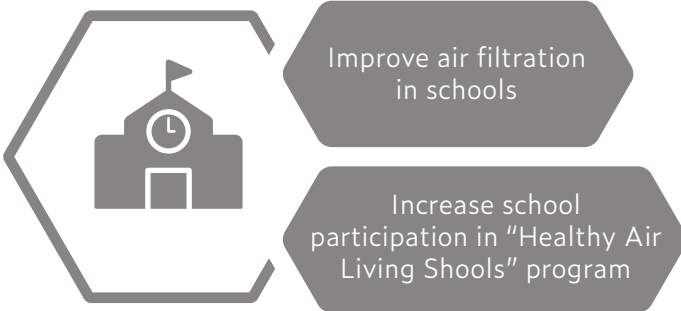
## Dust and Roads



## Trees and Lawns



## Schools



## Indoor Air Quality



## Outreach

