



AB 617 REPORT-BACK

South Central Fresno
2019

Table of Contents

List of Figures	0
List of Tables	0
1. INTRODUCTION	1
2. CARB’S 2019 SOUTH CENTRAL FRESNO ENFORCEMENT UPDATE	1
2.1 Inspection of Heavy-Duty Diesel Vehicles	2
2.2 Achieve Compliance with the Truck and Bus Regulation via Senate Bill 1.....	5
2.3 Consumer Products	6
2.4 Fuels	6
2.5 Complaints	6
2.6 Supplemental Environmental Projects	7
3. CARB’S ENFORCEMENT STRATEGIES UPDATE	9
3.1 Comparison of 2019 Enforcement Data to the Three-Year History	9
3.2 Achieve Compliance with the Truck and Bus Regulation via Senate Bill 1.....	10
3.3 Annual Report of Enforcement Activities.....	10
3.4 Cross-Agency Coordination.....	11
3.5 Outreach and Trainings	11
3.6 Streamlined Complaint Processes	12
3.7 No Idling Signs.....	13
3.8 Update Enforcement Strategies as Applicable	14
APPENDIX 1 – Program Descriptions.....	15
1. Heavy-Duty Diesel Vehicle Programs.....	15
2. Consumer Product Programs	16
APPENDIX 2 – Mobile Source Inspection Data – 2019	17
APPENDIX 3 – CalEPA Complaint Data – 2019	41
APPENDIX 4 – Diesel Complaint Data – 2019	41

List of Figures

Figure 1. 2019 Compliance Rate for Mobile Sources in South Central Fresno.....	3
Figure 2. 2019 CARB Enforcement Locations in South Central Fresno.....	4
Figure 3. CARB Enforcement and Compliance Rate from 2016 to 2019.....	10
Figure 4. CARB Complaint Reporting Business Cards.....	12

List of Tables

Table 1. 2019 CARB Program Inspections in South Central Fresno.....	2
Table 2. Breakdown of Letters Sent Under SB1	5
Table 3. Supplemental Environmental Projects in South Central Fresno.....	8

1. INTRODUCTION

The California Air Resources Board (CARB) is dedicated to cleaning up California's air through both voluntary and mandatory programs. CARB has many rules (i.e., regulations) that we enforce throughout the state to reduce air pollution from mobile sources (which are defined as vehicles that have engines, like trucks, buses, construction equipment, and ships).

Effective enforcement of these rules is a key element of California's success in reducing air pollution and fighting climate change. Fair and consistent enforcement also provides a level-playing field for all regulated businesses, ensuring no one has an unfair advantage by not doing their part to help clean the air. CARB's Enforcement Division is responsible for enforcing these regulations through field inspections, facility inspections, and audits.

In 2018, CARB selected ten communities for the first year of the Assembly Bill (AB) 617 Program. This past year, seven of the ten community steering committees (CSCs) developed Community Emissions Reduction Programs (CERP), each of which includes a community-specific enforcement plan administered by air district and CARB staff. In the case of South Central Fresno, the air district is the San Joaquin Valley Air Pollution Control District (SJVAPCD). This report provides an update to the community and air district on enforcement actions. The pages herein cover CARB's 2019 enforcement activities within this AB 617 community, including how we are addressing specific community concerns, and updates on how we have been and continue to implement the strategies outlined in South Central Fresno's Enforcement Plan.

2. CARB'S 2019 SOUTH CENTRAL FRESNO ENFORCEMENT UPDATE

A strong and effective enforcement plan can ensure that existing and future regulatory efforts are successful at reducing emissions and improving air quality and public health within selected AB 617 communities. The enforcement plans within the South Central Fresno CERP established strategies for enforcing existing air quality regulations, assessed existing non-compliance issues, identified approaches to enhance complaint reporting and compliance, and discussed potential enforcement mechanisms for new strategies. The Enforcement Plan also includes a three-year enforcement history (2015 – 2018) within the community as provided by CARB Enforcement. To review this and all other CERPs, visit https://ww2.arb.ca.gov/capp_2018_ad_cerps.

CARB is enhancing our enforcement efforts in each AB 617 community to address specific community concerns. While CARB has a strong presence in these communities, data from the past three years of enforcement efforts are now available through the Enforcement Division’s Visualization Tool¹, and demonstrate the Division’s ongoing commitment to focus enforcement resources in these communities to close any identified gaps.

This report provides an overview of CARB’s enforcement efforts in the South Central Fresno community during 2019. The report summarizes the total number of inspections, violations, and compliance rates across multiple CARB programs, including heavy-duty diesel vehicle inspection programs, consumer products, and fuels. In addition to summarizing enforcement efforts, the report provides an update on CARB’s enforcement strategies from South Central Fresno’s 2018 CERP.

2.1 Inspection of Heavy-Duty Diesel Vehicles

In 2019, CARB conducted 682 total program inspections on heavy-duty diesel vehicles (HDDV) within the AB 617 community of South Central Fresno. **Table 1** provides a breakdown of enforcement activities through the HDDV programs in the community in 2019. A description of each HDDV program listed below can be found in **APPENDIX 1 – Program Descriptions**. It is important to note that inspections are program-based and some occur concurrently, meaning that CARB may conduct multiple program inspections on a single HDDV at the same time.

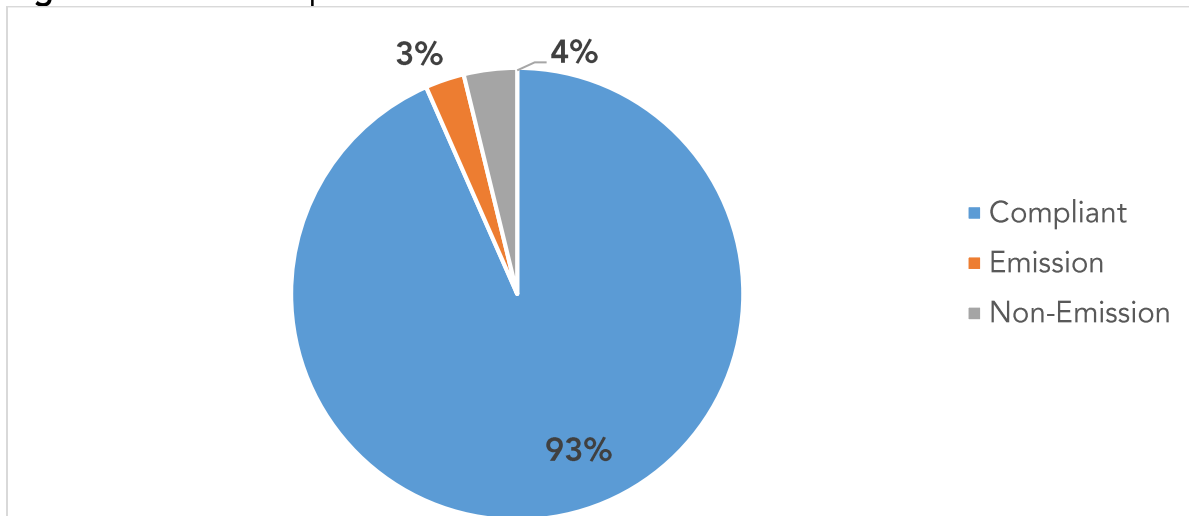
Table 1. 2019 CARB Program Inspections in South Central Fresno.

Program	Inspections	Compliant	Violations		Compliance Rate
			Emission	Non-Emission	
Drayage	2	2	0	0	100%
Heavy-Duty Vehicle Inspection Program (HDVIP)	456	430	4	22	94%
SmartWay	67	59	8	0	88%
Solid Waste Collection Vehicle (SWCV)	1	1	0	0	100%
Transportation Refrigeration Unit (TRU)	24	20	1	3	83%
Truck & Bus	132	125	6	1	95%
Total	682	637	19	26	93%

¹ CARB Enforcement Data Visualization Tool, available at <https://webmaps.arb.ca.gov/edvs/>.

The Mobile Source Program covers statewide programs and strategies to reduce emissions of smog-forming pollutants and air contaminants from mobile sources, both on- and off-road vehicles and equipment. Of the 682-vehicle program inspections, 637 were in compliance with CARB’s rules and regulations. As shown in **Figure 1**, this indicates an overall compliance rate of about 93 percent in 2019 within the South Central Fresno community. CARB issued 45 citations in the community, of which 19 citations were for emission-related violations (i.e., violations that directly contribute to air pollution) and 26 citations were for non-emission-related violations (i.e., violations that could contribute indirectly to air pollution, such as a truck not complying with labeling requirements).

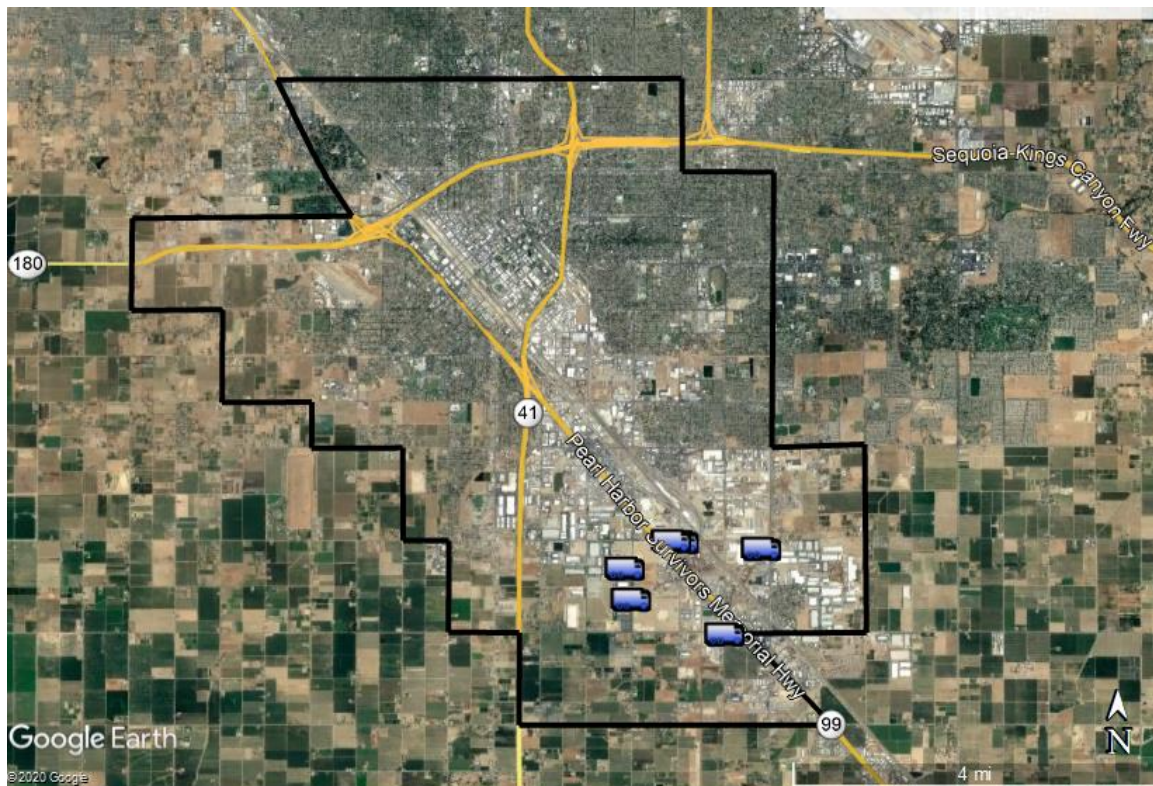
Figure 1. 2019 Compliance Rate for Mobile Sources in South Central Fresno.



Through CARB’s field enforcement activities in South Central Fresno, Enforcement staff estimate the compliance rate for mobile sources in the community to be around 93 percent. Since the compliance rate is already high, increased enforcement of mobile sources in the area may not play a significant role in lowering the pollution burden in South Central Fresno.

To expand CARB’s inspection range, Enforcement staff continues to collaborate with the California Highway Patrol to pull over HDDVs for inspection. This method of inspection, called a roadside inspection, is limited by the safety requirement of at least two lanes (in one direction) on a roadway to safely pull over and inspect HDDVs. Audits, another method of inspection, require facilities to cooperate and allow CARB staff to perform onsite inspections on HDDVs at the facility. In 2019, CARB Enforcement focused on several locations in South Central Fresno to inspect HDDVs. Indicated as truck icons in **Figure 2**, these locations include a roadside inspection site at North and Cedar Avenue/HWY 99, E. North Avenue, S. Orange Avenue, and Central Avenue.

Figure 2. 2019 CARB Enforcement Locations in South Central Fresno.



Moving into 2020, CARB staff will assist San Joaquin Valley Air Pollution Control District (SJVAPCD) with roaming idling inspections in South Central Fresno on at least a quarterly basis.

CARB Enforcement uses compliance audits as another important enforcement tool. Compliance audits start with Enforcement Division staff conducting a review of internal and external databases to determine which fleets and/or facilities potentially have the highest likelihood of operating out of compliance within a geographical area. This review may also be followed by field inspections. Once an audit is initiated, the company is issued a Notice of Audit, which requires the company owner to supply documentation to CARB to demonstrate compliance with CARB regulations. If the company owner is unable to provide proof of compliance, then the company owner receives a Notice of Violation, penalties are typically assessed, and the company is brought into compliance.

Moving forward into 2021, CARB's Enforcement Division plans to utilize compliance audits as an important tool to determine areas of high non-compliance within the community and address potential compliance issues. If a member of the CSC has suggestions for enhancing compliance of CARB's current rules and regulations, please contact the Community Outreach and Enforcement Section at COES@arb.ca.gov.

2.2 Achieve Compliance with the Truck and Bus Regulation via Senate Bill 1

In April 2017, the Governor signed into law Senate Bill 1 (SB 1),² a legislative package meant to generate significant funding for transportation projects (e.g., to repair local streets, bridges, and roadways) across California. SB 1 includes a provision that aims to bring old, polluting buses and trucks into compliance with applicable emission standards as outlined in the Statewide Truck and Bus Regulation, and authorizes DMV to deny registration to non-compliant heavy-duty vehicles³ starting January 1, 2020, through December 31, 2023. By the end of 2023, 100 percent of trucks and buses subject to the rule will be in compliance with this regulation.

In response to the regulation, CARB began a streamlined enforcement process to increase outreach to owners of heavy-duty diesel trucks and buses and provide an opportunity for vehicle owners to demonstrate compliance. Those with older vehicle models that could potentially be out of compliance were sent Notices of Non-Compliance (NC) and Notices of Violation (NOV)⁴ from 2018 through 2019. In the last quarter of 2019, CARB sent warning letters to fleet owners who appeared to have vehicles that could potentially be out of compliance beginning January 1, 2020. HDDV owners are now required to show proof of compliance to DMV with their vehicle registrations.

Table 2. Breakdown of Letters Sent Under SB1

Type of Letter	Number of Letters Sent
Warning letters	262
NC and NOV letters	97
Total	359

In South Central Fresno, CARB identified 2,020 heavy-duty diesel vehicles within the South Central Fresno community. As shown in **Table 2**, CARB issued 262 warning letters and 97 NCs and NOVs to owners of vehicles within the area in 2019. Of the 97 vehicle owners sent NCs or NOVs, owners of 11 vehicles demonstrated compliance, whereas 83 vehicles had registration holds issued by DMV and were removed from the road. In total, CARB issued warning letters or took enforcement action against 262 vehicle owners. No enforcement was taken on three other vehicles that were found not to be subject to the Truck and Bus Regulation.

² https://leginfo.legislature.ca.gov/faces/billNavClient.xhtml?bill_id=201720180SB1

³ The regulation applies to nearly all diesel-fueled trucks, buses, and school buses with a gross vehicle weight rating (GVWR) greater than 14,000 pounds.

⁴ A Notice of Non-Compliance letter is sent to request proof of compliance. If compliance cannot be verified, a Notice of Violation is sent.

2.3 Consumer Products

Consumer product inspections are an important regulatory tool to improve public health in the community. Consumer products, such as hairsprays, deodorants and flooring, are widely used, but can be sources of toxic air contaminants (TAC) and volatile organic compounds (VOC) that community members unknowingly bring into their homes.

As consumer products tend to be distributed and sold across the state in many different communities, pollutants from these products are considered area sources and are reviewed by CARB's Enforcement Division with a statewide lens rather than within a specific community. In 2019, the Consumer Product Enforcement Section conducted 673 investigations throughout the state and found 93 compliant products, 18 non-compliant products, and 562 products that are currently still under investigation. If you have any questions regarding CARB's Consumer Products Enforcement Section, please contact COES at COES@arb.ca.gov.

2.4 Fuels

California's reformulated gasoline requirements are designed to reduce emissions from the evaporation and burning of gasoline. The Low Carbon Fuel Standard⁵ (LCFS) requirements are designed to reduce greenhouse gas (GHG) emissions by reducing the carbon content of fuels. To enforce these programs, CARB staff conduct inspections and review reporting information. When CARB identifies a violation, staff pursue compliance through corrective action and through the issuance and settlement of NOVs.

CARB has not conducted any fuel inspections in the South Central Fresno community to date. However, South Central Fresno benefits from the fuel inspections and audits that take place in the surrounding area as fuel is widely distributed to service stations in the Central Valley. In 2019, 167 fuel inspections were conducted in California, of which four gasoline samples were found to be non-compliant. There were no violations for diesel, ethanol, or racing fuels. Overall, for the entire state, CARB determined a compliance rate of 98 percent in 2019.

2.5 Complaints

Reporting potential violations of air quality requirements can provide important information for enforcement efforts. Enforcement staff investigate tips about non-compliance and complaints about smoking vehicles and other sources of air pollution.

⁵ <https://ww2.arb.ca.gov/our-work/programs/low-carbon-fuel-standard>

In 2019, CARB Enforcement received six complaints through the California Environmental Protection Agency (CalEPA) reporting system within the South Central Fresno community. CARB Enforcement referred these complaints to the appropriate agency within a timely manner.

Unfortunately, not all complaints are actionable. This can be due to a lack of necessary information, not providing a specific enough location, or not providing contact information for Enforcement staff to obtain additional information. In 2019, CARB received four actionable complaints for mobile sources registered in South Central Fresno.

2.6 Supplemental Environmental Projects

CARB's Supplemental Environmental Projects⁶ (SEP) are community-based projects funded by a portion of penalties received during CARB's settlement of enforcement actions. The intention of CARB's SEP Program is to improve public health, reduce pollution, increase environmental compliance, and bring public awareness to neighborhoods most burdened by environmental harm. SEPs are presented to violators who may choose to fund a project to offset a portion (up to 50 percent) of their penalty for failing to follow CARB's rules and regulations.

Projects span across a variety of category types and include projects such as air filtration, air monitoring, tree planting, and community education programs. In South Central Fresno and the surrounding AB 617 community area, three projects have received funding for around a total of \$768,130 (see **Table 3** for details).

⁶ <https://ww2.arb.ca.gov/our-work/programs/supplemental-environmental-projects-seps>

Table 3. Supplemental Environmental Projects in South Central Fresno.

SEP Program	Funding	Description
Healthy Air Neighborhoods-Fresno	\$35,000	This project focused on outreach and educational efforts in the South West Fresno area to raise awareness on the San Joaquin Valley Air District’s Residential Wood Burning Rule, as well as other clean air incentive programs.
Fresno TREES (Tree planting along Roads to help Eliminate pollution Exposure and Sequester carbon)	\$680,130 (ongoing)	The Fresno TREES Project is a multiyear project aimed at evaluating how well vegetative barriers (trees and shrubs) protect people from exposure to air pollution downwind of major roads.
Community Based Monitoring and Assessment Program for Fresno Phase 1	\$53,000	This project proposes to use community-based air quality monitoring, modeling and related outreach to inform residents about air quality issues in their communities, and to reduce exposure to air pollutants, thus providing protection for public health. Sonoma Technology Inc, will work alongside Central California Environmental Justice Network and community members to establish monitoring locations. The data collected will help community stakeholders in the Fresno region to understand the potential need for air quality mitigation.

Community-based organizations, air districts, and others wanting to support the health of their communities can apply to receive funding through the SEP Program. CARB staff work with applicants throughout the SEP proposal process to ensure applications are complete and thorough. CARB staff will continue to work with communities in South Central Fresno to fund as many eligible community projects as possible through the SEP Program. CARB anticipates funding a diverse mix of air pollution and exposure reduction, outreach and education, air monitoring, greening, and additional project types that align with the SEP Program’s policy and prioritize disadvantaged communities. For more information, email the SEP team at SEP@arb.ca.gov.

3. CARB'S ENFORCEMENT STRATEGIES UPDATE

After hearing concerns from community members through CSC meetings and CARB's complaint program, CARB staff developed each enforcement plan within CERPs in collaboration with the local air districts to address the specific needs of the communities. Concerns included items such as confusion about the complaint processes at both CARB and the air districts, and a lack of collaboration among agencies.

In the 2018 Enforcement Plan, CARB set the following enforcement goal:

CARB acknowledges that the high compliance rates identified in the enforcement history may not necessarily reflect compliance across the community. In cases where enhanced enforcement activities uncover non-compliance issues, CARB's goal will be to achieve the same or higher compliance rates as observed in the three-year history. CARB staff will also work closely with the community steering committee, the Air District, and other agencies (e.g. City of Fresno) to address gaps in the enforcement of mobile sources and seek opportunities to close these gaps.

CARB remains committed to our enforcement goal and strategies within the South Central Fresno community. In the South Central Fresno CERP, CARB committed to the following seven strategies in the Enforcement Plan (Chapter 5):

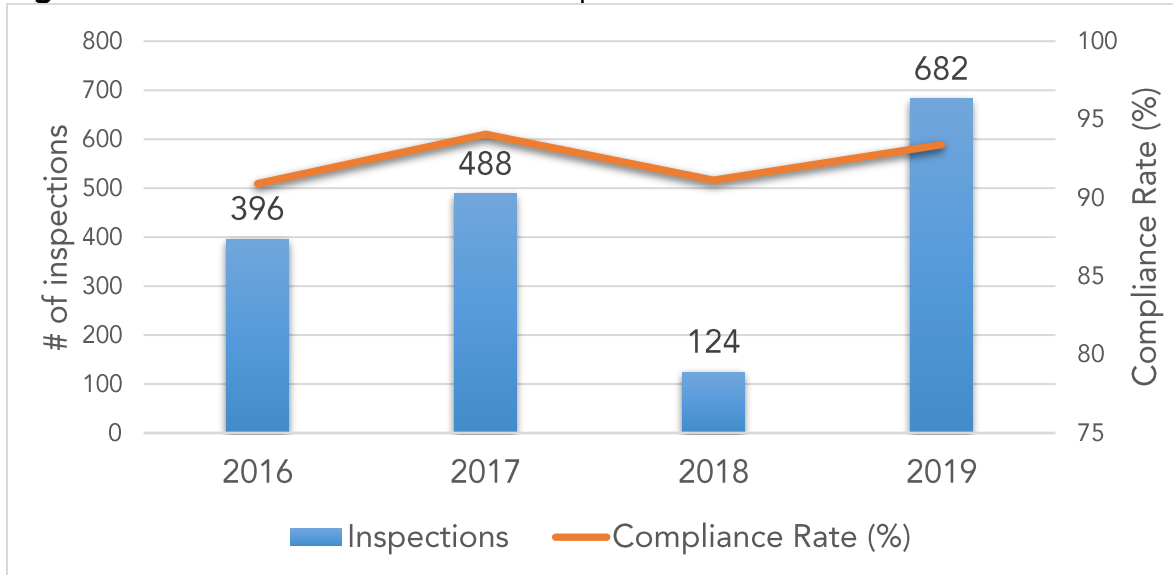
1. Increase the frequency of compliance inspections;
2. Achieve compliance with the Truck and Bus Regulation via Senate Bill 1;
3. Provide an annual report of enforcement activities;
4. Coordinate with other agencies;
5. Enhance CARB's Data Management Practices;
6. Provide in-person community specific training; and
7. Update enforcement strategies as applicable.

CARB approved the Community Emission Reduction Plan in February 2020. Prior to approval, CARB staff had already begun implementation of some of the strategies. The following information is related to 2020 updates of CARB's strategies.

3.1 Comparison of 2019 Enforcement Data to the Three-Year History

In the 2018 South Central Fresno Community Enforcement Plan, CARB Enforcement committed to increasing the frequency of compliance inspections. As seen in **Figure 3** below, CARB has increased the number of inspections from previous years within the South Central Fresno community. From 2018 to 2019, CARB increased the number of inspections in the community by 558.

Figure 3. CARB Enforcement and Compliance Rate from 2016 to 2019.



It is important to note that this does not include audits conducted by CARB staff. However, even with an increase in enforcement, the compliance rate has slightly increased to around 93 percent in 2019. The compliance rate of mobile sources in the area has stayed between 90 to 95 percent since 2016.

CARB Enforcement continues to be open to adjusting this strategy to better meet the community's needs. If a member of CSC wishes to make comments or provide suggestions to improve CARB's enforcement, please contact the Community Outreach and Enforcement Section at COES@arb.ca.gov.

3.2 Achieve Compliance with the Truck and Bus Regulation via Senate Bill 1

See *Enforcement Update* section for progress reaching Compliance with the Truck and Bus Regulation via SB 1.

3.3 Annual Report of Enforcement Activities

CARB Enforcement is committed to providing CSC with a report of our progress towards implementing strategies in the Enforcement Plan, at minimum on an annual basis.

3.4 Cross-Agency Coordination

CARB Enforcement staff are committed to participating in all CSC meetings moving forward, and will seek opportunities to work with other agencies in meeting the goals of CERP and the Enforcement Plan. If a CSC member has any suggestions for how CARB Enforcement can coordinate with other agencies, please contact COES@arb.ca.gov or speak with the local CARB Enforcement liaison at an upcoming meeting.

3.5 Outreach and Trainings

In an effort to provide communities with more knowledge, tools, and resources for enhanced enforcement, CARB Enforcement has developed the following outreach materials to further inform community members:

- **Complaint Reporting.**
 - CARB has developed a community-focused training to provide communities with the information necessary to report a complaint. This training covers the basics of reporting a complaint, what CARB Enforcement refers to as the five Ws: Who, What, When, Where and Why. In April of 2020, CARB Enforcement staff began the process of developing this training into an online format to which air districts and community groups can link. The trainings are tailored to each region within the AB 617 Program. For instance, the training provided in the San Joaquin Valley may differ from training given in West Oakland, based on the types of emission sources within the region, as well as contact information for other regulatory parties.
 - As shown in **Figure 4**, CARB has also developed reporting cards (available in both English and Spanish) that include information on where to report complaints and the type of information that would be useful to provide when reporting complaints. If the community is interested in receiving CARB's complaint reporting training or obtaining the Complaint Reporting business cards through the CSC or another outlet, please contact COES@arb.ca.gov, or speak to your local CARB Enforcement liaison.

Figure 4. CARB Complaint Reporting Business Cards.



- **CARB’s Enforcement Visualization Tool.** This web-based tool allows community members to see a map that details statewide field inspections and case settlements across California. This tool allows you to look up inspections by program, type, zip code, and date. A User Guide has been developed to go along with the tool. This is a one-pager on how to use the Visualization Tool in your community. The Visualization Tool is available at <https://webmaps.arb.ca.gov/edvs/>.
- **Supplemental Environmental Project (SEP) brochures.** The SEP brochure outlines the SEP program and how to apply. It is available in both English and Spanish. To learn more about the SEP program, visit <https://ww2.arb.ca.gov/our-work/programs/supplemental-environmental-projects-seps>
- **Informational Outreach Materials.** CARB staff are currently working on community outreach materials, including a multi-regulation booklet and a community idling factsheet. The booklet, geared towards community members, aims to provide information on the requirements for trucks and buses operating in their communities. For more information on any of the above outreach and training activities, please contact the Community Outreach and Enforcement Section at COES@arb.ca.gov.

3.6 Streamlined Complaint Processes

CARB Enforcement complaints are currently separated by program and each program has its own complaint line, website, and email. Community members across the state have raised concerns around the complaint reporting process, therefore CARB has begun working to create a one-stop-shop where all complaints will go through one system. This will make it easier for communities to make a complaint and follow it through the process. We are working to make this streamlined system easy to use, straightforward, with the ability to track complaints in multiple different ways, and be as transparent to the public as possible.

As an interim step, CARB staff have begun to track all complaints we receive directly through the CalEPA complaint reporting system, as we work to streamline the other methods of complaint reporting. This system is also available online for the public to report a complaint: calepa.ca.gov/enforcement/complaints.

The development of our streamlined reporting system has just begun. Please contact the Community Outreach and Enforcement Section at COES@arb.ca.gov if you have any suggestions to make the reporting system more robust. CARB staff also encourages community members to share your experience reporting complaints to help us develop a better complaint system.

3.7 No Idling Signs

CARB is committed to working with CSC, SJVAPCD, the City of Fresno, and other applicable organizations and agencies to provide “No Idling” signage to deter idling in areas of concern within the South Central Fresno community.

Currently, CARB can provide two types of signs to the community at no cost:

1. A “No Idling sign” that can be used on public roads to help reduce the amount of idling trucks at a specific location.
2. A sign for use at schools to help inform and reduce idling of passenger vehicles.



CARB does not have authority over the idling of passenger vehicles but staff understands that compounded emissions during school pick-up and drop-off have been a concern to community members in South Central Fresno and in other AB 617 communities Statewide. CARB is prepared to provide a number of signs to the community, if requested, as well as to speak directly with school administration, teachers, staff, and the greater school community about CARB’s “No Idling” signs and our rules.

3.8 Update Enforcement Strategies as Applicable

CARB Enforcement sees the Enforcement Plan within the South Central Fresno CERP as an ever-evolving document. We are committed to updating enforcement strategies as requested by CSC, if the strategies are enforceable by CARB staff or if CARB can reasonably accommodate the request (e.g., additional enforcement training for idling vehicles). As CARB adopts new regulations included in the Plan, CARB will enforce these measures and integrate associated activities and data into the South Central Fresno enforcement measures. If a CSC member would like to suggest updates to the enforcement strategies, please contact CARB Enforcement at COES@arb.ca.gov, or speak with the CARB Enforcement liaison at an upcoming meeting.

APPENDIX 1 – Program Descriptions

1. Heavy-Duty Diesel Vehicle Programs

More information on CARB’s Heavy-Duty Diesel Vehicle Programs is available at arb.ca.gov/truckstop.

Heavy-Duty Vehicle Inspection Program (HDVIP): The HDVIP program requires inspection of heavy-duty trucks and buses for excessive smoke and tampering, and engine certification label compliance. Any heavy-duty vehicle traveling in California, including vehicles registered in other states and foreign countries may be tested. CARB inspection teams perform tests at border crossings, CHP weigh stations, fleet facilities, and randomly selected roadside locations. Owners of trucks and buses found in violation are subject to minimum penalties starting at \$300 per violation.

Off-Road Construction Equipment (Off-road regulation): Construction equipment is a major contributor to air pollution, especially when large construction projects are adjacent to neighborhoods. To address this source of air pollution, CARB adopted the nation's first regulation aimed at cleaning up off-road construction equipment such as bulldozers, graders, and backhoes. The off-road regulation requires off-road fleets to meet fleet average emission standards and be equipped with best available control technology (BACT) (a few specific exceptions apply).

Smart Way: The Tractor-Trailer Greenhouse Gas Regulation requires 53-foot or longer dry van or refrigerated van trailers and the tractors that pull them on California highways to use certain equipment that the U.S. EPA Smart Way program has verified or designated to meet their efficiency standards.

Solid Waste Collection Vehicles (SWCVs): The Solid Waste Collection Vehicle regulation required vehicle owners to upgrade solid waste collection vehicles by December 31, 2010. On January 24, 2019, the Board approved amendments that now require reporting for SWCVs with 2006 model year and older engines to avoid unnecessary registration delays at the California Department of Motor Vehicles (DMV) starting in 2020 due to Senate Bill 1 requirements. The approved amendments added heavy diesel-fueled on-road single engine cranes to the regulation and became effective on July 1, 2019. These specialized cranes are required to phase-in 2010 or newer model year engines from 2019 to 2027.

Transport Refrigeration Unit (TRU): TRUs are refrigeration systems powered by diesel internal combustion engines designed to refrigerate or heat perishable products that are transported in various containers, including semi-trailers, truck vans, shipping containers, and rail cars. Because diesel particulate matter is an identified toxic air contaminant, CARB adopted an airborne toxic control measure (ATCM) for TRUs and

TRU generator sets. CARB staff inspect TRUs to ensure that the units are meeting labeling and in-use performance standards identified in the TRU regulation.

Drayage: The Drayage Truck Regulation is part of CARB's ongoing efforts to reduce particulate matter (PM) and oxides of nitrogen (NOx) emissions from diesel-fueled engines and improve air quality associated with goods movement. Heavy-duty vehicles that carry goods to or from a port or intermodal facility are required to be equipped with a 2007 or newer model year engine. This requirement becomes stricter in 2023, when drayage trucks are required to be equipped with a 2010 or newer model year engine, because drayage trucks will be required to meet the standards of the Statewide Truck and Bus regulation.

Statewide Truck and Bus (STB): The Statewide Truck and Bus regulation requires diesel trucks with a gross vehicle weight rating (GVWR) greater than 14,000 pounds that operate in California to install diesel particulate filters, or replace older engines with cleaner engine technology, on a schedule based on the model year of the engine and GVWR. By the end of 2023, 100 percent of trucks and buses subject to the rule will be in compliance with this regulation.

Idling: Idling and opacity inspections are performed to ensure an HDDV is compliant with emission standards and is not violating CARB's Idling regulation. Idling for more than five minutes is prohibited unless the HDDV is certified clean idle and the vehicle is more than 100 feet away from a school or restricted area (exceptions apply). Vehicle owners and drivers in violation are subject to minimum penalties starting at \$300 per violation and up to \$1000 per day.

2. Consumer Product Programs

Composite Wood Products: CARB's ATCM to control formaldehyde emissions from composite wood specifically focuses on three products: hardwood plywood, particleboard, and medium density fiberboard. Investigators in the Composite Wood Products program purchase samples of regulated products from outlets all over California. They inspect products and packaging for compliance with labeling requirements and send selected products to the laboratory for testing.

Consumer Products: Consumer products are chemically formulated products used by household and institutional consumers. Some examples are: detergents, cleaning compounds; polishes, floor finishes; cosmetics and personal care products; home, lawn, and garden products; disinfectants and sanitizers; aerosol paints and automotive specialty products. Consumer products do not include other paint products, furniture coatings, or architectural coatings. Investigators in the Consumer Products program purchase samples of regulated consumer products from outlets all over California. They inspect product containers for compliance with registration and dating requirements and send selected products to the laboratory for testing.

APPENDIX 2 – Mobile Source Inspection Data – 2019

Inspection Date	Program	Inspection	Citation Issued (Y/N)	Violation Type (Emission or Non-Emission)	Location	Engine Year
3/19/2019	Drayage		N		MAPLE @ CENTRAL	
3/19/2019	HDVIP	Quick Snap	N		MAPLE @ CENTRAL	
3/19/2019	HDVIP	Tampering	N		MAPLE @ CENTRAL	
3/19/2019	HDVIP	Quick Snap	N		MAPLE @ CENTRAL	2007
3/19/2019	HDVIP	ECL	N		MAPLE @ CENTRAL	2007
3/19/2019	HDVIP	Tampering	N		MAPLE @ CENTRAL	2007
3/19/2019	HDVIP	Quick Snap	N		MAPLE @ CENTRAL	
3/19/2019	HDVIP	Tampering	N		MAPLE @ CENTRAL	
3/19/2019	HDVIP	Quick Snap	N		MAPLE @ CENTRAL	2003
3/19/2019	HDVIP	ECL	N		MAPLE @ CENTRAL	2003
3/19/2019	HDVIP	Tampering	N		MAPLE @ CENTRAL	2003
3/19/2019	HDVIP	Quick Snap	N		MAPLE @ CENTRAL	2014
3/19/2019	HDVIP	ECL	N		MAPLE @ CENTRAL	2014
3/19/2019	HDVIP	DEF	N		MAPLE @ CENTRAL	2014
3/19/2019	HDVIP	Tampering	N		MAPLE @ CENTRAL	2014
3/19/2019	HDVIP	Quick Snap	N		MAPLE @ CENTRAL	1996
3/19/2019	HDVIP	ECL	N		MAPLE @ CENTRAL	1996
3/19/2019	HDVIP	Tampering	N		MAPLE @ CENTRAL	1996
3/19/2019	HDVIP	Quick Snap	N		MAPLE @ CENTRAL	2003
3/19/2019	HDVIP	ECL	Y	Emission	MAPLE @ CENTRAL	2003
3/19/2019	HDVIP	Tampering	N		MAPLE @ CENTRAL	2003
3/19/2019	HDVIP	Quick Snap	N		MAPLE @ CENTRAL	2001
3/19/2019	HDVIP	ECL	N		MAPLE @ CENTRAL	2001
3/19/2019	HDVIP	Tampering	N		MAPLE @ CENTRAL	2001
3/19/2019	HDVIP	Quick Snap	N		MAPLE @ CENTRAL	2006
3/19/2019	HDVIP	ECL	N		MAPLE @ CENTRAL	2006
3/19/2019	HDVIP	Tampering	N		MAPLE @ CENTRAL	2006
3/19/2019	HDVIP	Quick Snap	N		MAPLE @ CENTRAL	2005
3/19/2019	HDVIP	ECL	N		MAPLE @ CENTRAL	2005
3/19/2019	HDVIP	Tampering	N		MAPLE @ CENTRAL	2005
3/19/2019	HDVIP	Quick Snap	N		MAPLE @ CENTRAL	2007
3/19/2019	HDVIP	ECL	N		MAPLE @ CENTRAL	2007

Inspection Date	Program	Inspection	Citation Issued (Y/N)	Violation Type (Emission or Non-Emission)	Location	Engine Year
3/19/2019	HDVIP	Tampering	N		MAPLE @ CENTRAL	2007
3/19/2019	HDVIP	Quick Snap	N		MAPLE @ CENTRAL	2004
3/19/2019	HDVIP	ECL	N		MAPLE @ CENTRAL	2004
3/19/2019	HDVIP	Tampering	N		MAPLE @ CENTRAL	2004
3/19/2019	Smart Way		N		MAPLE @ CENTRAL	2005
3/19/2019	Smart Way		N		MAPLE @ CENTRAL	2004
3/19/2019	Smart Way		N		MAPLE @ CENTRAL	2007
3/19/2019	Smart Way		N		MAPLE @ CENTRAL	2006
3/19/2019	Smart Way		N		MAPLE @ CENTRAL	2001
3/19/2019	Smart Way		N		MAPLE @ CENTRAL	1996
3/19/2019	Smart Way		N		MAPLE @ CENTRAL	2014
3/19/2019	Smart Way		N		MAPLE @ CENTRAL	2003
3/19/2019	Smart Way		N		MAPLE @ CENTRAL	
3/19/2019	Smart Way		N		MAPLE @ CENTRAL	2007
3/19/2019	SWC		N		MAPLE @ CENTRAL	
3/19/2019	Truck & Bus		N		MAPLE @ CENTRAL	2005
3/19/2019	Truck & Bus		N		MAPLE @ CENTRAL	2004
3/19/2019	Truck & Bus		Y	Non-Emissions	MAPLE @ CENTRAL	2006
3/19/2019	Truck & Bus		Y	Emission	MAPLE @ CENTRAL	2003
3/19/2019	Truck & Bus		N		MAPLE @ CENTRAL	2014
3/19/2019	Truck & Bus		N		MAPLE @ CENTRAL	1996
3/19/2019	Truck & Bus		N		MAPLE @ CENTRAL	2003
3/19/2019	Truck & Bus		N		MAPLE @ CENTRAL	2007
3/19/2019	HDVIP	Quick Snap	N		NORTH & CEDAR AVE/HWY 99	2015
3/19/2019	HDVIP	ECL	N		NORTH & CEDAR AVE/HWY 99	2015
3/19/2019	HDVIP	Tampering	N		NORTH & CEDAR AVE/HWY 99	2015
3/19/2019	HDVIP	Quick Snap	N		NORTH & CEDAR AVE/HWY 99	2015
3/19/2019	HDVIP	ECL	N		NORTH & CEDAR AVE/HWY 99	2015
3/19/2019	HDVIP	Tampering	N		NORTH & CEDAR AVE/HWY 99	2015

Inspection Date	Program	Inspection	Citation Issued (Y/N)	Violation Type (Emission or Non-Emission)	Location	Engine Year
3/19/2019	HDVIP	Quick Snap	N		NORTH & CEDAR AVE/HWY 99	2013
3/19/2019	HDVIP	ECL	N		NORTH & CEDAR AVE/HWY 99	2013
3/19/2019	HDVIP	Tampering	N		NORTH & CEDAR AVE/HWY 99	2013
3/19/2019	HDVIP	Quick Snap	N		NORTH & CEDAR AVE/HWY 99	2013
3/19/2019	HDVIP	ECL	N		NORTH & CEDAR AVE/HWY 99	2013
3/19/2019	HDVIP	Tampering	N		NORTH & CEDAR AVE/HWY 99	2013
3/19/2019	HDVIP	Quick Snap	N		NORTH & CEDAR AVE/HWY 99	1998
3/19/2019	HDVIP	ECL	N		NORTH & CEDAR AVE/HWY 99	1998
3/19/2019	HDVIP	Tampering	N		NORTH & CEDAR AVE/HWY 99	1998
3/19/2019	HDVIP	Quick Snap	N		NORTH & CEDAR AVE/HWY 99	2008
3/19/2019	HDVIP	ECL	N		NORTH & CEDAR AVE/HWY 99	2008
3/19/2019	HDVIP	Tampering	N		NORTH & CEDAR AVE/HWY 99	2008
3/19/2019	HDVIP	Quick Snap	N		NORTH & CEDAR AVE/HWY 99	2016
3/19/2019	HDVIP	ECL	N		NORTH & CEDAR AVE/HWY 99	2016
3/19/2019	HDVIP	Tampering	N		NORTH & CEDAR AVE/HWY 99	2016
3/19/2019	HDVIP	ECL	Y	Emission	NORTH & CEDAR AVE/HWY 99	
3/19/2019	HDVIP	Quick Snap	N		NORTH & CEDAR AVE/HWY 99	2012
3/19/2019	HDVIP	ECL	N		NORTH & CEDAR AVE/HWY 99	2012
3/19/2019	HDVIP	Tampering	N		NORTH & CEDAR AVE/HWY 99	2012
3/19/2019	HDVIP	Quick Snap	N		NORTH & CEDAR AVE/HWY 99	2018
3/19/2019	HDVIP	ECL	N		NORTH & CEDAR AVE/HWY 99	2018
3/19/2019	HDVIP	Tampering	N		NORTH & CEDAR AVE/HWY 99	2018
3/19/2019	HDVIP	Quick Snap	N		NORTH & CEDAR AVE/HWY 99	2011
3/19/2019	HDVIP	ECL	N		NORTH & CEDAR AVE/HWY 99	2011
3/19/2019	HDVIP	Tampering	N		NORTH & CEDAR AVE/HWY 99	2011
3/19/2019	HDVIP	Quick Snap	N		NORTH & CEDAR AVE/HWY 99	2014
3/19/2019	HDVIP	ECL	N		NORTH & CEDAR AVE/HWY 99	2014
3/19/2019	HDVIP	Tampering	N		NORTH & CEDAR AVE/HWY 99	2014

Inspection Date	Program	Inspection	Citation Issued (Y/N)	Violation Type (Emission or Non-Emission)	Location	Engine Year
3/19/2019	HDVIP	Quick Snap	N		NORTH & CEDAR AVE/HWY 99	2013
3/19/2019	HDVIP	ECL	N		NORTH & CEDAR AVE/HWY 99	2013
3/19/2019	HDVIP	Tampering	N		NORTH & CEDAR AVE/HWY 99	2013
3/19/2019	HDVIP	Quick Snap	N		NORTH & CEDAR AVE/HWY 99	2013
3/19/2019	HDVIP	ECL	Y	Emission	NORTH & CEDAR AVE/HWY 99	2013
3/19/2019	HDVIP	Tampering	N		NORTH & CEDAR AVE/HWY 99	2013
3/19/2019	HDVIP	Quick Snap	N		NORTH & CEDAR AVE/HWY 99	2002
3/19/2019	HDVIP	Tampering	N		NORTH & CEDAR AVE/HWY 99	2002
3/19/2019	HDVIP	ECL	Y	Emission	NORTH & CEDAR AVE/HWY 99	
3/19/2019	HDVIP	Quick Snap	N		NORTH & CEDAR AVE/HWY 99	2011
3/19/2019	HDVIP	ECL	N		NORTH & CEDAR AVE/HWY 99	2011
3/19/2019	HDVIP	Tampering	N		NORTH & CEDAR AVE/HWY 99	2011
3/19/2019	HDVIP	Quick Snap	N		NORTH & CEDAR AVE/HWY 99	2008
3/19/2019	HDVIP	ECL	N		NORTH & CEDAR AVE/HWY 99	2008
3/19/2019	HDVIP	Tampering	N		NORTH & CEDAR AVE/HWY 99	2008
3/19/2019	Smart Way		N		NORTH & CEDAR AVE/HWY 99	
3/19/2019	Smart Way		Y	Emission	NORTH & CEDAR AVE/HWY 99	
3/19/2019	Smart Way		N		NORTH & CEDAR AVE/HWY 99	
3/19/2019	TRU		N		NORTH & CEDAR AVE/HWY 99	
3/19/2019	TRU		Y	Non-Emissions	NORTH & CEDAR AVE/HWY 99	2011
3/19/2019	TRU		N		NORTH & CEDAR AVE/HWY 99	
3/19/2019	TRU		N		NORTH & CEDAR AVE/HWY 99	
3/19/2019	TRU		N		NORTH & CEDAR AVE/HWY 99	2013
3/19/2019	TRU		N		NORTH & CEDAR AVE/HWY 99	
3/19/2019	TRU		N		NORTH & CEDAR AVE/HWY 99	2003
3/19/2019	Truck & Bus		N		NORTH & CEDAR AVE/HWY 99	2011
3/19/2019	Truck & Bus		N		NORTH & CEDAR AVE/HWY 99	2008
3/19/2019	Truck & Bus		Y	Emission	NORTH & CEDAR AVE/HWY 99	

Inspection Date	Program	Inspection	Citation Issued (Y/N)	Violation Type (Emission or Non-Emission)	Location	Engine Year
3/19/2019	Truck & Bus		Y	Emission	NORTH & CEDAR AVE/HWY 99	
3/19/2019	Truck & Bus		N		NORTH & CEDAR AVE/HWY 99	2002
3/19/2019	Truck & Bus		N		NORTH & CEDAR AVE/HWY 99	2013
3/19/2019	Truck & Bus		N		NORTH & CEDAR AVE/HWY 99	2014
3/19/2019	Truck & Bus		N		NORTH & CEDAR AVE/HWY 99	2013
3/19/2019	Truck & Bus		N		NORTH & CEDAR AVE/HWY 99	2012
3/19/2019	Truck & Bus		N		NORTH & CEDAR AVE/HWY 99	2011
3/19/2019	Truck & Bus		N		NORTH & CEDAR AVE/HWY 99	2018
3/19/2019	Truck & Bus		N		NORTH & CEDAR AVE/HWY 99	1998
3/19/2019	Truck & Bus		N		NORTH & CEDAR AVE/HWY 99	2016
3/19/2019	Truck & Bus		N		NORTH & CEDAR AVE/HWY 99	2008
3/19/2019	Truck & Bus		N		NORTH & CEDAR AVE/HWY 99	2013
3/19/2019	Truck & Bus		N		NORTH & CEDAR AVE/HWY 99	2015
3/19/2019	Truck & Bus		N		NORTH & CEDAR AVE/HWY 99	2015
3/19/2019	Truck & Bus		N		NORTH & CEDAR AVE/HWY 99	2013
3/19/2019	HDVIP	Quick Snap	N		3575 S. ORANGE AVE AT AMAZON,	2009
3/19/2019	HDVIP	ECL	N		3575 S. ORANGE AVE AT AMAZON,	2009
3/19/2019	HDVIP	Tampering	N		3575 S. ORANGE AVE AT AMAZON,	2009
3/19/2019	HDVIP	Quick Snap	N		3575 S. ORANGE AVE AT AMAZON,	2015
3/19/2019	HDVIP	ECL	N		3575 S. ORANGE AVE AT AMAZON,	2015
3/19/2019	HDVIP	Tampering	N		3575 S. ORANGE AVE AT AMAZON,	2015
3/19/2019	HDVIP	Quick Snap	N		3575 S. ORANGE AVE AT AMAZON,	2014
3/19/2019	HDVIP	ECL	N		3575 S. ORANGE AVE AT AMAZON,	2014
3/19/2019	HDVIP	Tampering	N		3575 S. ORANGE AVE AT AMAZON,	2014
3/19/2019	HDVIP	Quick Snap	N		3575 S. ORANGE AVE AT AMAZON,	
3/19/2019	HDVIP	ECL	Y	Emission	3575 S. ORANGE AVE AT AMAZON,	
3/19/2019	HDVIP	Tampering	N		3575 S. ORANGE AVE AT AMAZON,	
3/19/2019	HDVIP	Quick Snap	N		3575 S. ORANGE AVE AT AMAZON,	2018

Inspection Date	Program	Inspection	Citation Issued (Y/N)	Violation Type (Emission or Non-Emission)	Location	Engine Year
3/19/2019	HDVIP	ECL	N		3575 S. ORANGE AVE AT AMAZON,	2018
3/19/2019	HDVIP	Tampering	N		3575 S. ORANGE AVE AT AMAZON,	2018
3/19/2019	HDVIP	Quick Snap	N		3575 S. ORANGE AVE AT AMAZON,	2018
3/19/2019	HDVIP	ECL	N		3575 S. ORANGE AVE AT AMAZON,	2018
3/19/2019	HDVIP	Tampering	N		3575 S. ORANGE AVE AT AMAZON,	2018
3/19/2019	HDVIP	Quick Snap	N		3575 S. ORANGE AVE AT AMAZON,	2009
3/19/2019	HDVIP	ECL	N		3575 S. ORANGE AVE AT AMAZON,	2009
3/19/2019	HDVIP	Quick Snap	N		3575 S. ORANGE AVE AT AMAZON,	2017
3/19/2019	HDVIP	ECL	N		3575 S. ORANGE AVE AT AMAZON,	2017
3/19/2019	HDVIP	Tampering	N		3575 S. ORANGE AVE AT AMAZON,	2017
3/19/2019	HDVIP	Tampering	N		3575 S. ORANGE AVE AT AMAZON,	2009
3/19/2019	HDVIP	Quick Snap	N		3575 S. ORANGE AVE AT AMAZON,	2014
3/19/2019	HDVIP	ECL	N		3575 S. ORANGE AVE AT AMAZON,	2014
3/19/2019	HDVIP	Quick Snap	N		3575 S. ORANGE AVE AT AMAZON,	
3/19/2019	HDVIP	ECL	N		3575 S. ORANGE AVE AT AMAZON,	
3/19/2019	HDVIP	Tampering	N		3575 S. ORANGE AVE AT AMAZON,	
3/19/2019	HDVIP	Quick Snap	N		3575 S. ORANGE AVE AT AMAZON,	2017
3/19/2019	HDVIP	ECL	N		3575 S. ORANGE AVE AT AMAZON,	2017
3/19/2019	HDVIP	Tampering	N		3575 S. ORANGE AVE AT AMAZON,	2017
3/19/2019	HDVIP	Quick Snap	N		3575 S. ORANGE AVE AT AMAZON,	
3/19/2019	HDVIP	ECL	N		3575 S. ORANGE AVE AT AMAZON,	
3/19/2019	HDVIP	Tampering	N		3575 S. ORANGE AVE AT AMAZON,	
3/19/2019	HDVIP	Quick Snap	N		3575 S. ORANGE AVE AT AMAZON,	
3/19/2019	HDVIP	ECL	N		3575 S. ORANGE AVE AT AMAZON,	
3/19/2019	HDVIP	Tampering	Y	Emission	3575 S. ORANGE AVE AT AMAZON,	

Inspection Date	Program	Inspection	Citation Issued (Y/N)	Violation Type (Emission or Non-Emission)	Location	Engine Year
3/19/2019	HDVIP	Quick Snap	N		3575 S. ORANGE AVE AT AMAZON,	2014
3/19/2019	HDVIP	ECL	N		3575 S. ORANGE AVE AT AMAZON,	2014
3/19/2019	HDVIP	Tampering	N		3575 S. ORANGE AVE AT AMAZON,	2014
3/19/2019	Smart Way		N		3575 S. ORANGE AVE AT AMAZON,	
3/19/2019	Smart Way		Y	Emission	3575 S. ORANGE AVE AT AMAZON,	
3/19/2019	Smart Way		N		3575 S. ORANGE AVE AT AMAZON,	
3/19/2019	Smart Way		N		3575 S. ORANGE AVE AT AMAZON,	
3/19/2019	Smart Way		N		3575 S. ORANGE AVE AT AMAZON,	
3/19/2019	Smart Way		N		3575 S. ORANGE AVE AT AMAZON,	
3/19/2019	Truck & Bus		N		3575 S. ORANGE AVE AT AMAZON,	
3/19/2019	Truck & Bus		N		3575 S. ORANGE AVE AT AMAZON,	2014
3/19/2019	Truck & Bus		N		3575 S. ORANGE AVE AT AMAZON,	
3/19/2019	Truck & Bus		N		3575 S. ORANGE AVE AT AMAZON,	
3/19/2019	Truck & Bus		N		3575 S. ORANGE AVE AT AMAZON,	
3/19/2019	Truck & Bus		N		3575 S. ORANGE AVE AT AMAZON,	2017
3/19/2019	Truck & Bus		N		3575 S. ORANGE AVE AT AMAZON,	2018
3/19/2019	Truck & Bus		N		3575 S. ORANGE AVE AT AMAZON,	2018
3/19/2019	Truck & Bus		N		3575 S. ORANGE AVE AT AMAZON,	2014
3/19/2019	Truck & Bus		N		3575 S. ORANGE AVE AT AMAZON,	2009
3/19/2019	Truck & Bus		N		3575 S. ORANGE AVE AT AMAZON,	2017
3/19/2019	Truck & Bus		N		3575 S. ORANGE AVE AT AMAZON,	2015
3/19/2019	Truck & Bus		N		3575 S. ORANGE AVE AT AMAZON,	2009
3/19/2019	Truck & Bus		N		3575 S. ORANGE AVE AT AMAZON,	2014
3/20/2019	Drayage		N		CENTRAL @ MAPLE	
3/20/2019	HDVIP	Quick Snap	N		CENTRAL @ MAPLE	2001
3/20/2019	HDVIP	ECL	N		CENTRAL @ MAPLE	2001
3/20/2019	HDVIP	Tampering	N		CENTRAL @ MAPLE	2001
3/20/2019	HDVIP	Quick Snap	N		CENTRAL @ MAPLE	2008
3/20/2019	HDVIP	ECL	N		CENTRAL @ MAPLE	2008

Inspection Date	Program	Inspection	Citation Issued (Y/N)	Violation Type (Emission or Non-Emission)	Location	Engine Year
3/20/2019	HDVIP	Tampering	N		CENTRAL @ MAPLE	2008
3/20/2019	HDVIP	Quick Snap	N		CENTRAL @ MAPLE	
3/20/2019	HDVIP	ECL	N		CENTRAL @ MAPLE	
3/20/2019	HDVIP	Tampering	N		CENTRAL @ MAPLE	
3/20/2019	HDVIP	Quick Snap	N		CENTRAL @ MAPLE	2000
3/20/2019	HDVIP	ECL	N		CENTRAL @ MAPLE	2000
3/20/2019	HDVIP	Tampering	N		CENTRAL @ MAPLE	2000
3/20/2019	HDVIP	Quick Snap	N		CENTRAL @ MAPLE	2012
3/20/2019	HDVIP	ECL	N		CENTRAL @ MAPLE	2012
3/20/2019	HDVIP	DEF	N		CENTRAL @ MAPLE	2012
3/20/2019	HDVIP	Tampering	N		CENTRAL @ MAPLE	2012
3/20/2019	HDVIP	Quick Snap	N		CENTRAL @ MAPLE	2011
3/20/2019	HDVIP	ECL	N		CENTRAL @ MAPLE	2011
3/20/2019	HDVIP	DEF	N		CENTRAL @ MAPLE	2011
3/20/2019	HDVIP	Tampering	N		CENTRAL @ MAPLE	2011
3/20/2019	HDVIP	Quick Snap	N		CENTRAL @ MAPLE	1993
3/20/2019	HDVIP	ECL	N		CENTRAL @ MAPLE	1993
3/20/2019	HDVIP	Tampering	N		CENTRAL @ MAPLE	1993
3/20/2019	Smart Way		N		CENTRAL @ MAPLE	2011
3/20/2019	Smart Way		N		CENTRAL @ MAPLE	2012
3/20/2019	Smart Way		N		CENTRAL @ MAPLE	2000
3/20/2019	Smart Way		N		CENTRAL @ MAPLE	
3/20/2019	Smart Way		N		CENTRAL @ MAPLE	2008
3/20/2019	Smart Way		N		CENTRAL @ MAPLE	2001
3/20/2019	Truck & Bus		N		CENTRAL @ MAPLE	2011
3/20/2019	Truck & Bus		Y	Emission	CENTRAL @ MAPLE	1993
3/20/2019	Truck & Bus		N		CENTRAL @ MAPLE	2012
3/20/2019	Truck & Bus		N		CENTRAL @ MAPLE	2000
3/20/2019	Truck & Bus		N		CENTRAL @ MAPLE	2001
3/20/2019	HDVIP	Quick Snap	N		NORTH & CEDAR AVE, NEAR HWY 99	2016
3/20/2019	HDVIP	ECL	N		NORTH & CEDAR AVE, NEAR HWY 99	2016
3/20/2019	HDVIP	Tampering	N		NORTH & CEDAR AVE, NEAR HWY 99	2016

Inspection Date	Program	Inspection	Citation Issued (Y/N)	Violation Type (Emission or Non-Emission)	Location	Engine Year
3/20/2019	HDVIP	Quick Snap	N		NORTH & CEDAR AVE, NEAR HWY 99	2016
3/20/2019	HDVIP	ECL	N		NORTH & CEDAR AVE, NEAR HWY 99	2016
3/20/2019	HDVIP	Tampering	N		NORTH & CEDAR AVE, NEAR HWY 99	2016
3/20/2019	HDVIP	Quick Snap	N		NORTH & CEDAR AVE, NEAR HWY 99	
3/20/2019	HDVIP	ECL	Y	Emission	NORTH & CEDAR AVE, NEAR HWY 99	
3/20/2019	HDVIP	Tampering	N		NORTH & CEDAR AVE, NEAR HWY 99	
3/20/2019	HDVIP	Quick Snap	N		NORTH & CEDAR AVE, NEAR HWY 99	2005
3/20/2019	HDVIP	ECL	N		NORTH & CEDAR AVE, NEAR HWY 99	2005
3/20/2019	HDVIP	Quick Snap	N		NORTH & CEDAR AVE, NEAR HWY 99	2012
3/20/2019	HDVIP	ECL	N		NORTH & CEDAR AVE, NEAR HWY 99	2012
3/20/2019	HDVIP	Tampering	N		NORTH & CEDAR AVE, NEAR HWY 99	2012
3/20/2019	HDVIP	Quick Snap	N		NORTH & CEDAR AVE, NEAR HWY 99	2011
3/20/2019	HDVIP	ECL	N		NORTH & CEDAR AVE, NEAR HWY 99	2011
3/20/2019	HDVIP	Tampering	N		NORTH & CEDAR AVE, NEAR HWY 99	2011
3/20/2019	HDVIP	Quick Snap	N		NORTH & CEDAR AVE, NEAR HWY 99	2011
3/20/2019	HDVIP	ECL	N		NORTH & CEDAR AVE, NEAR HWY 99	2011
3/20/2019	HDVIP	Tampering	N		NORTH & CEDAR AVE, NEAR HWY 99	2011
3/20/2019	HDVIP	Quick Snap	N		NORTH & CEDAR AVE, NEAR HWY 99	2011
3/20/2019	HDVIP	ECL	N		NORTH & CEDAR AVE, NEAR HWY 99	2011
3/20/2019	HDVIP	Tampering	N		NORTH & CEDAR AVE, NEAR HWY 99	2011
3/20/2019	HDVIP	Quick Snap	N		NORTH & CEDAR AVE, NEAR HWY 99	2011
3/20/2019	HDVIP	ECL	N		NORTH & CEDAR AVE, NEAR HWY 99	2011
3/20/2019	HDVIP	Tampering	N		NORTH & CEDAR AVE, NEAR HWY 99	2011
3/20/2019	HDVIP	Quick Snap	N		NORTH & CEDAR AVE, NEAR HWY 99	2011
3/20/2019	HDVIP	ECL	N		NORTH & CEDAR AVE, NEAR HWY 99	2011
3/20/2019	HDVIP	Tampering	N		NORTH & CEDAR AVE, NEAR HWY 99	2011
3/20/2019	HDVIP	Quick Snap	N		NORTH & CEDAR AVE, NEAR HWY 99	2003
3/20/2019	HDVIP	ECL	N		NORTH & CEDAR AVE, NEAR HWY 99	2003
3/20/2019	HDVIP	Tampering	N		NORTH & CEDAR AVE, NEAR HWY 99	2003
3/20/2019	HDVIP	Quick Snap	N		NORTH & CEDAR AVE, NEAR HWY 99	2002
3/20/2019	HDVIP	ECL	N		NORTH & CEDAR AVE, NEAR HWY 99	2002

Inspection Date	Program	Inspection	Citation Issued (Y/N)	Violation Type (Emission or Non-Emission)	Location	Engine Year
3/20/2019	HDVIP	Tampering	Y	Emission	NORTH & CEDAR AVE, NEAR HWY 99	2002
3/20/2019	HDVIP	Quick Snap	N		NORTH & CEDAR AVE, NEAR HWY 99	2011
3/20/2019	HDVIP	ECL	N		NORTH & CEDAR AVE, NEAR HWY 99	2011
3/20/2019	HDVIP	Tampering	N		NORTH & CEDAR AVE, NEAR HWY 99	2011
3/20/2019	HDVIP	Tampering	Y	Emission	NORTH & CEDAR AVE, NEAR HWY 99	
3/20/2019	HDVIP	Quick Snap	N		NORTH & CEDAR AVE, NEAR HWY 99	2009
3/20/2019	HDVIP	ECL	N		NORTH & CEDAR AVE, NEAR HWY 99	2009
3/20/2019	HDVIP	Tampering	N		NORTH & CEDAR AVE, NEAR HWY 99	2009
3/20/2019	HDVIP	Quick Snap	N		NORTH & CEDAR AVE, NEAR HWY 99	2017
3/20/2019	HDVIP	ECL	N		NORTH & CEDAR AVE, NEAR HWY 99	2017
3/20/2019	HDVIP	Tampering	N		NORTH & CEDAR AVE, NEAR HWY 99	2017
3/20/2019	HDVIP	Quick Snap	N		NORTH & CEDAR AVE, NEAR HWY 99	2014
3/20/2019	HDVIP	ECL	N		NORTH & CEDAR AVE, NEAR HWY 99	2014
3/20/2019	HDVIP	Tampering	N		NORTH & CEDAR AVE, NEAR HWY 99	2014
3/20/2019	HDVIP	Quick Snap	N		NORTH & CEDAR AVE, NEAR HWY 99	2009
3/20/2019	HDVIP	ECL	N		NORTH & CEDAR AVE, NEAR HWY 99	2009
3/20/2019	HDVIP	Tampering	N		NORTH & CEDAR AVE, NEAR HWY 99	2009
3/20/2019	HDVIP	Quick Snap	N		NORTH & CEDAR AVE, NEAR HWY 99	2009
3/20/2019	HDVIP	Quick Snap	N		NORTH & CEDAR AVE, NEAR HWY 99	2011
3/20/2019	HDVIP	ECL	N		NORTH & CEDAR AVE, NEAR HWY 99	2011
3/20/2019	HDVIP	Tampering	N		NORTH & CEDAR AVE, NEAR HWY 99	2011
3/20/2019	HDVIP	Quick Snap	N		NORTH & CEDAR AVE, NEAR HWY 99	2014
3/20/2019	HDVIP	ECL	N		NORTH & CEDAR AVE, NEAR HWY 99	2014
3/20/2019	HDVIP	Tampering	N		NORTH & CEDAR AVE, NEAR HWY 99	2014
3/20/2019	HDVIP	ECL	N		NORTH & CEDAR AVE, NEAR HWY 99	2009
3/20/2019	HDVIP	Tampering	N		NORTH & CEDAR AVE, NEAR HWY 99	2009
3/20/2019	HDVIP	Quick Snap	N		NORTH & CEDAR AVE, NEAR HWY 99	2014
3/20/2019	HDVIP	ECL	N		NORTH & CEDAR AVE, NEAR HWY 99	2014

Inspection Date	Program	Inspection	Citation Issued (Y/N)	Violation Type (Emission or Non-Emission)	Location	Engine Year
3/20/2019	HDVIP	Tampering	N		NORTH & CEDAR AVE, NEAR HWY 99	2014
3/20/2019	Smart Way		N		NORTH & CEDAR AVE, NEAR HWY 99	
3/20/2019	Smart Way		N		NORTH & CEDAR AVE, NEAR HWY 99	
3/20/2019	Smart Way		Y	Emission	NORTH & CEDAR AVE, NEAR HWY 99	
3/20/2019	Smart Way		N		NORTH & CEDAR AVE, NEAR HWY 99	
3/20/2019	TRU		Y	Non-Emissions	NORTH & CEDAR AVE, NEAR HWY 99	
3/20/2019	Truck & Bus		N		NORTH & CEDAR AVE, NEAR HWY 99	2014
3/20/2019	Truck & Bus		N		NORTH & CEDAR AVE, NEAR HWY 99	2009
3/20/2019	Truck & Bus		N		NORTH & CEDAR AVE, NEAR HWY 99	2014
3/20/2019	Truck & Bus		N		NORTH & CEDAR AVE, NEAR HWY 99	2011
3/20/2019	Truck & Bus		N		NORTH & CEDAR AVE, NEAR HWY 99	2009
3/20/2019	Truck & Bus		N		NORTH & CEDAR AVE, NEAR HWY 99	2014
3/20/2019	Truck & Bus		N		NORTH & CEDAR AVE, NEAR HWY 99	2017
3/20/2019	Truck & Bus		N		NORTH & CEDAR AVE, NEAR HWY 99	2009
3/20/2019	Truck & Bus		N		NORTH & CEDAR AVE, NEAR HWY 99	2011
3/20/2019	Truck & Bus		N		NORTH & CEDAR AVE, NEAR HWY 99	2011
3/20/2019	Truck & Bus		N		NORTH & CEDAR AVE, NEAR HWY 99	2011
3/20/2019	Truck & Bus		N		NORTH & CEDAR AVE, NEAR HWY 99	2011
3/20/2019	Truck & Bus		N		NORTH & CEDAR AVE, NEAR HWY 99	2005
3/20/2019	Truck & Bus		N		NORTH & CEDAR AVE, NEAR HWY 99	2012
3/20/2019	Truck & Bus		N		NORTH & CEDAR AVE, NEAR HWY 99	2011
3/20/2019	Truck & Bus		N		NORTH & CEDAR AVE, NEAR HWY 99	2002
3/20/2019	Truck & Bus		N		NORTH & CEDAR AVE, NEAR HWY 99	2003
3/20/2019	Truck & Bus		N		NORTH & CEDAR AVE, NEAR HWY 99	
3/20/2019	Truck & Bus		N		NORTH & CEDAR AVE, NEAR HWY 99	2016
3/20/2019	Truck & Bus		N		NORTH & CEDAR AVE, NEAR HWY 99	2016
3/20/2019	HDVIP	Quick Snap	N		2635 E. NORTH AVE,	2013
3/20/2019	HDVIP	ECL	N		2635 E. NORTH AVE,	2013

Inspection Date	Program	Inspection	Citation Issued (Y/N)	Violation Type (Emission or Non-Emission)	Location	Engine Year
3/20/2019	HDVIP	Tampering	N		2635 E. NORTH AVE,	2013
3/20/2019	HDVIP	Quick Snap	N		2635 E. NORTH AVE,	2013
3/20/2019	HDVIP	ECL	N		2635 E. NORTH AVE,	2013
3/20/2019	HDVIP	Tampering	N		2635 E. NORTH AVE,	2013
3/20/2019	HDVIP	Quick Snap	N		2635 E. NORTH AVE,	2016
3/20/2019	HDVIP	ECL	N		2635 E. NORTH AVE,	2016
3/20/2019	HDVIP	Tampering	N		2635 E. NORTH AVE,	2016
3/20/2019	HDVIP	Quick Snap	N		2635 E. NORTH AVE,	2013
3/20/2019	HDVIP	ECL	N		2635 E. NORTH AVE,	2013
3/20/2019	HDVIP	Tampering	N		2635 E. NORTH AVE,	2013
3/20/2019	HDVIP	Quick Snap	N		2635 E. NORTH AVE,	2018
3/20/2019	HDVIP	ECL	N		2635 E. NORTH AVE,	2018
3/20/2019	HDVIP	Tampering	N		2635 E. NORTH AVE,	2018
3/20/2019	HDVIP	Quick Snap	N		2635 E. NORTH AVE,	2011
3/20/2019	HDVIP	ECL	N		2635 E. NORTH AVE,	2011
3/20/2019	HDVIP	Tampering	N		2635 E. NORTH AVE,	2011
3/20/2019	HDVIP	Quick Snap	N		2635 E. NORTH AVE,	2019
3/20/2019	HDVIP	ECL	N		2635 E. NORTH AVE,	2019
3/20/2019	HDVIP	Tampering	N		2635 E. NORTH AVE,	2019
3/20/2019	HDVIP	Quick Snap	N		2635 E. NORTH AVE,	2010
3/20/2019	HDVIP	ECL	N		2635 E. NORTH AVE,	2010
3/20/2019	HDVIP	Tampering	N		2635 E. NORTH AVE,	2010
3/20/2019	HDVIP	Quick Snap	N		2635 E. NORTH AVE,	2007
3/20/2019	HDVIP	ECL	N		2635 E. NORTH AVE,	2007
3/20/2019	HDVIP	Tampering	N		2635 E. NORTH AVE,	2007
3/20/2019	HDVIP	Quick Snap	N		2635 E. NORTH AVE,	2016
3/20/2019	HDVIP	ECL	N		2635 E. NORTH AVE,	2016
3/20/2019	HDVIP	Tampering	N		2635 E. NORTH AVE,	2016
3/20/2019	HDVIP	Quick Snap	N		2635 E. NORTH AVE,	
3/20/2019	HDVIP	ECL	Y	Emission	2635 E. NORTH AVE,	
3/20/2019	HDVIP	Tampering	N		2635 E. NORTH AVE,	
3/20/2019	HDVIP	Quick Snap	N		2635 E. NORTH AVE,	2010
3/20/2019	HDVIP	ECL	N		2635 E. NORTH AVE,	2010
3/20/2019	HDVIP	Tampering	N		2635 E. NORTH AVE,	2010
3/20/2019	HDVIP	Quick Snap	N		2635 E. NORTH AVE,	

Inspection Date	Program	Inspection	Citation Issued (Y/N)	Violation Type (Emission or Non-Emission)	Location	Engine Year
3/20/2019	HDVIP	ECL	Y	Emission	2635 E. NORTH AVE,	
3/20/2019	HDVIP	Tampering	N		2635 E. NORTH AVE,	
3/20/2019	HDVIP	Quick Snap	N		2635 E. NORTH AVE,	2015
3/20/2019	HDVIP	ECL	N		2635 E. NORTH AVE,	2015
3/20/2019	HDVIP	Tampering	N		2635 E. NORTH AVE,	2015
3/20/2019	HDVIP	Quick Snap	N		2635 E. NORTH AVE,	2009
3/20/2019	HDVIP	ECL	N		2635 E. NORTH AVE,	2009
3/20/2019	HDVIP	Tampering	N		2635 E. NORTH AVE,	2009
3/20/2019	HDVIP	Quick Snap	N		2635 E. NORTH AVE,	2004
3/20/2019	HDVIP	ECL	N		2635 E. NORTH AVE,	2004
3/20/2019	HDVIP	Tampering	N		2635 E. NORTH AVE,	2004
3/20/2019	HDVIP	Quick Snap	N		2635 E. NORTH AVE,	2011
3/20/2019	HDVIP	ECL	N		2635 E. NORTH AVE,	2011
3/20/2019	HDVIP	Tampering	N		2635 E. NORTH AVE,	2011
3/20/2019	HDVIP	Quick Snap	N		2635 E. NORTH AVE,	1997
3/20/2019	HDVIP	Quick Snap	N		2635 E. NORTH AVE,	2013
3/20/2019	HDVIP	ECL	N		2635 E. NORTH AVE,	2013
3/20/2019	HDVIP	Tampering	N		2635 E. NORTH AVE,	2013
3/20/2019	HDVIP	Quick Snap	N		2635 E. NORTH AVE,	2011
3/20/2019	HDVIP	ECL	N		2635 E. NORTH AVE,	2011
3/20/2019	HDVIP	Tampering	N		2635 E. NORTH AVE,	2011
3/20/2019	HDVIP	Quick Snap	N		2635 E. NORTH AVE,	2012
3/20/2019	HDVIP	ECL	N		2635 E. NORTH AVE,	2012
3/20/2019	HDVIP	Tampering	N		2635 E. NORTH AVE,	2012
3/20/2019	HDVIP	Quick Snap	N		2635 E. NORTH AVE,	2017
3/20/2019	HDVIP	ECL	N		2635 E. NORTH AVE,	2017
3/20/2019	HDVIP	Tampering	N		2635 E. NORTH AVE,	2017
3/20/2019	HDVIP	Quick Snap	N		2635 E. NORTH AVE,	2015
3/20/2019	HDVIP	ECL	N		2635 E. NORTH AVE,	2015
3/20/2019	HDVIP	Tampering	N		2635 E. NORTH AVE,	2015
3/20/2019	HDVIP	Quick Snap	N		2635 E. NORTH AVE,	
3/20/2019	HDVIP	ECL	Y	Emission	2635 E. NORTH AVE,	
3/20/2019	HDVIP	Tampering	N		2635 E. NORTH AVE,	
3/20/2019	HDVIP	Quick Snap	N		2635 E. NORTH AVE,	
3/20/2019	HDVIP	ECL	Y	Emission	2635 E. NORTH AVE,	

Inspection Date	Program	Inspection	Citation Issued (Y/N)	Violation Type (Emission or Non-Emission)	Location	Engine Year
3/20/2019	HDVIP	Tampering	N		2635 E. NORTH AVE,	
3/20/2019	HDVIP	Quick Snap	N		2635 E. NORTH AVE,	2011
3/20/2019	HDVIP	ECL	N		2635 E. NORTH AVE,	2011
3/20/2019	HDVIP	Tampering	N		2635 E. NORTH AVE,	2011
3/20/2019	HDVIP	Quick Snap	N		2635 E. NORTH AVE,	2017
3/20/2019	HDVIP	ECL	N		2635 E. NORTH AVE,	2017
3/20/2019	HDVIP	Tampering	N		2635 E. NORTH AVE,	2017
3/20/2019	HDVIP	Quick Snap	N		2635 E. NORTH AVE,	2017
3/20/2019	HDVIP	ECL	N		2635 E. NORTH AVE,	2017
3/20/2019	HDVIP	Tampering	N		2635 E. NORTH AVE,	2017
3/20/2019	HDVIP	Quick Snap	N		2635 E. NORTH AVE,	2014
3/20/2019	HDVIP	ECL	N		2635 E. NORTH AVE,	2014
3/20/2019	HDVIP	Tampering	N		2635 E. NORTH AVE,	2014
3/20/2019	HDVIP	Quick Snap	N		2635 E. NORTH AVE,	2007
3/20/2019	HDVIP	ECL	N		2635 E. NORTH AVE,	2007
3/20/2019	HDVIP	Tampering	N		2635 E. NORTH AVE,	2007
3/20/2019	HDVIP	Quick Snap	N		2635 E. NORTH AVE,	
3/20/2019	HDVIP	ECL	Y	Emission	2635 E. NORTH AVE,	
3/20/2019	HDVIP	Tampering	N		2635 E. NORTH AVE,	
3/20/2019	HDVIP	Quick Snap	N		2635 E. NORTH AVE,	2013
3/20/2019	HDVIP	ECL	N		2635 E. NORTH AVE,	2013
3/20/2019	HDVIP	Tampering	N		2635 E. NORTH AVE,	2013
3/20/2019	HDVIP	Quick Snap	N		2635 E. NORTH AVE,	2003
3/20/2019	HDVIP	ECL	N		2635 E. NORTH AVE,	2003
3/20/2019	HDVIP	Tampering	N		2635 E. NORTH AVE,	2003
3/20/2019	Smart Way		N		2635 E. NORTH AVE,	
3/20/2019	Smart Way		N		2635 E. NORTH AVE,	
3/20/2019	Smart Way		N		2635 E. NORTH AVE,	
3/20/2019	Smart Way		N		2635 E. NORTH AVE,	
3/20/2019	Smart Way		N		2635 E. NORTH AVE,	
3/20/2019	Smart Way		N		2635 E. NORTH AVE,	
3/20/2019	Smart Way		N		2635 E. NORTH AVE,	
3/20/2019	Smart Way		N		2635 E. NORTH AVE,	

Inspection Date	Program	Inspection	Citation Issued (Y/N)	Violation Type (Emission or Non-Emission)	Location	Engine Year
3/20/2019	Smart Way		N		2635 E. NORTH AVE,	
3/20/2019	Smart Way		N		2635 E. NORTH AVE,	
3/20/2019	Smart Way		N		2635 E. NORTH AVE,	
3/20/2019	Smart Way		N		2635 E. NORTH AVE,	
3/20/2019	TRU		N		2635 E. NORTH AVE,	
3/20/2019	TRU		Y	Emission	2635 E. NORTH AVE,	
3/20/2019	TRU		N		2635 E. NORTH AVE,	
3/20/2019	TRU		N		2635 E. NORTH AVE,	
3/20/2019	Truck & Bus		N		2635 E. NORTH AVE,	2003
3/20/2019	Truck & Bus		N		2635 E. NORTH AVE,	2013
3/20/2019	Truck & Bus		N		2635 E. NORTH AVE,	2007
3/20/2019	Truck & Bus		N		2635 E. NORTH AVE,	2014
3/20/2019	Truck & Bus		N		2635 E. NORTH AVE,	2017
3/20/2019	Truck & Bus		N		2635 E. NORTH AVE,	2017
3/20/2019	Truck & Bus		N		2635 E. NORTH AVE,	
3/20/2019	Truck & Bus		N		2635 E. NORTH AVE,	2011
3/20/2019	Truck & Bus		N		2635 E. NORTH AVE,	2015
3/20/2019	Truck & Bus		Y	Emission	2635 E. NORTH AVE,	1997
3/20/2019	Truck & Bus		N		2635 E. NORTH AVE,	2013
3/20/2019	Truck & Bus		N		2635 E. NORTH AVE,	2017
3/20/2019	Truck & Bus		N		2635 E. NORTH AVE,	2012
3/20/2019	Truck & Bus		N		2635 E. NORTH AVE,	2011
3/20/2019	Truck & Bus		N		2635 E. NORTH AVE,	2009
3/20/2019	Truck & Bus		N		2635 E. NORTH AVE,	2015
3/20/2019	Truck & Bus		N		2635 E. NORTH AVE,	
3/20/2019	Truck & Bus		N		2635 E. NORTH AVE,	2010
3/20/2019	Truck & Bus		N		2635 E. NORTH AVE,	
3/20/2019	Truck & Bus		N		2635 E. NORTH AVE,	2016
3/20/2019	Truck & Bus		N		2635 E. NORTH AVE,	2011

Inspection Date	Program	Inspection	Citation Issued (Y/N)	Violation Type (Emission or Non-Emission)	Location	Engine Year
3/20/2019	Truck & Bus		N		2635 E. NORTH AVE,	2004
3/20/2019	Truck & Bus		N		2635 E. NORTH AVE,	2019
3/20/2019	Truck & Bus		N		2635 E. NORTH AVE,	2007
3/20/2019	Truck & Bus		N		2635 E. NORTH AVE,	2010
3/20/2019	Truck & Bus		N		2635 E. NORTH AVE,	2011
3/20/2019	Truck & Bus		N		2635 E. NORTH AVE,	2018
3/20/2019	Truck & Bus		N		2635 E. NORTH AVE,	2013
3/20/2019	Truck & Bus		N		2635 E. NORTH AVE,	2016
3/20/2019	Truck & Bus		N		2635 E. NORTH AVE,	2013
3/20/2019	Truck & Bus		N		2635 E. NORTH AVE,	2013
4/23/2019	HDVIP	Quick Snap	N		3225 S ORANGE	2007
4/23/2019	HDVIP	ECL	N		3225 S ORANGE	2007
4/23/2019	HDVIP	Tampering	N		3225 S ORANGE	2007
4/23/2019	HDVIP	Quick Snap	N		3225 S ORANGE	2012
4/23/2019	HDVIP	ECL	N		3225 S ORANGE	2012
4/23/2019	HDVIP	DEF	N		3225 S ORANGE	2012
4/23/2019	HDVIP	Tampering	N		3225 S ORANGE	2012
4/23/2019	HDVIP	Quick Snap	N		3225 S ORANGE	2012
4/23/2019	HDVIP	ECL	N		3225 S ORANGE	2012
4/23/2019	HDVIP	DEF	N		3225 S ORANGE	2012
4/23/2019	HDVIP	Tampering	N		3225 S ORANGE	2012
4/23/2019	HDVIP	Quick Snap	N		3225 S ORANGE	2011
4/23/2019	HDVIP	ECL	N		3225 S ORANGE	2011
4/23/2019	HDVIP	DEF	N		3225 S ORANGE	2011
4/23/2019	HDVIP	Tampering	N		3225 S ORANGE	2011
4/23/2019	HDVIP	Quick Snap	N		3225 S ORANGE	2011
4/23/2019	HDVIP	ECL	N		3225 S ORANGE	2011
4/23/2019	HDVIP	DEF	N		3225 S ORANGE	2011
4/23/2019	HDVIP	Tampering	N		3225 S ORANGE	2011
4/23/2019	HDVIP	Quick Snap	N		3225 S ORANGE	2009
4/23/2019	HDVIP	ECL	N		3225 S ORANGE	2009
4/23/2019	HDVIP	Tampering	N		3225 S ORANGE	2009
4/23/2019	HDVIP	Quick Snap	N		3225 S ORANGE	2005

Inspection Date	Program	Inspection	Citation Issued (Y/N)	Violation Type (Emission or Non-Emission)	Location	Engine Year
4/23/2019	HDVIP	ECL	N		3225 S ORANGE	2005
4/23/2019	HDVIP	Tampering	N		3225 S ORANGE	2005
4/23/2019	HDVIP	Quick Snap	N		3225 S ORANGE	2013
4/23/2019	HDVIP	ECL	N		3225 S ORANGE	2013
4/23/2019	HDVIP	DEF	N		3225 S ORANGE	2013
4/23/2019	HDVIP	Tampering	N		3225 S ORANGE	2013
4/23/2019	HDVIP	Quick Snap	N		3225 S ORANGE	2014
4/23/2019	HDVIP	ECL	N		3225 S ORANGE	2014
4/23/2019	HDVIP	Tampering	N		3225 S ORANGE	2014
4/23/2019	HDVIP	Quick Snap	N		3225 S ORANGE	2015
4/23/2019	HDVIP	ECL	N		3225 S ORANGE	2015
4/23/2019	HDVIP	DEF	N		3225 S ORANGE	2015
4/23/2019	HDVIP	Tampering	N		3225 S ORANGE	2015
4/23/2019	HDVIP	Quick Snap	N		3225 S ORANGE	2014
4/23/2019	HDVIP	ECL	N		3225 S ORANGE	2014
4/23/2019	HDVIP	DEF	N		3225 S ORANGE	2014
4/23/2019	HDVIP	Tampering	N		3225 S ORANGE	2014
4/23/2019	Smart Way		N		3225 S ORANGE	2012
4/23/2019	Smart Way		N		3225 S ORANGE	2012
4/23/2019	Smart Way		N		3225 S ORANGE	2007
4/23/2019	Smart Way		N		3225 S ORANGE	2011
4/23/2019	Smart Way		N		3225 S ORANGE	2011
4/23/2019	Smart Way		N		3225 S ORANGE	
4/23/2019	Smart Way		N		3225 S ORANGE	
4/23/2019	Smart Way		N		3225 S ORANGE	2009
4/23/2019	Smart Way		N		3225 S ORANGE	2013
4/23/2019	Smart Way		N		3225 S ORANGE	2014
4/23/2019	Smart Way		N		3225 S ORANGE	2015
4/23/2019	Smart Way		N		3225 S ORANGE	2014
4/23/2019	TRU		N		3225 S ORANGE	
4/23/2019	Truck & Bus		N		3225 S ORANGE	2012
4/23/2019	Truck & Bus		Y	Emission	3225 S ORANGE	2005

Inspection Date	Program	Inspection	Citation Issued (Y/N)	Violation Type (Emission or Non-Emission)	Location	Engine Year
4/24/2019	HDVIP	Quick Snap	N		W/B NORTH AVE BETWEEN HWY 99 AND CEDAR AVE,	
4/24/2019	HDVIP	ECL	Y	Emission	W/B NORTH AVE BETWEEN HWY 99 AND CEDAR AVE,	
4/24/2019	HDVIP	Tampering	N		W/B NORTH AVE BETWEEN HWY 99 AND CEDAR AVE,	
4/24/2019	HDVIP	Quick Snap	N		W/B NORTH AVE BETWEEN HWY 99 AND CEDAR AVE,	2012
4/24/2019	HDVIP	ECL	N		W/B NORTH AVE BETWEEN HWY 99 AND CEDAR AVE,	2012
4/24/2019	HDVIP	Tampering	N		W/B NORTH AVE BETWEEN HWY 99 AND CEDAR AVE,	2012
4/24/2019	HDVIP	Quick Snap	N		W/B NORTH AVE BETWEEN HWY 99 AND CEDAR AVE,	
4/24/2019	HDVIP	ECL	Y	Emission	W/B NORTH AVE BETWEEN HWY 99 AND CEDAR AVE,	
4/24/2019	HDVIP	Tampering	N		W/B NORTH AVE BETWEEN HWY 99 AND CEDAR AVE,	
4/24/2019	HDVIP	Quick Snap	N		W/B NORTH AVE BETWEEN HWY 99 AND CEDAR AVE,	2011
4/24/2019	HDVIP	ECL	Y	Emission	W/B NORTH AVE BETWEEN HWY 99 AND CEDAR AVE,	2011
4/24/2019	HDVIP	Tampering	N		W/B NORTH AVE BETWEEN HWY 99 AND CEDAR AVE,	2011
4/24/2019	HDVIP	Quick Snap	N		W/B NORTH AVE BETWEEN HWY 99 AND CEDAR AVE,	2008
4/24/2019	HDVIP	ECL	N		W/B NORTH AVE BETWEEN HWY 99 AND CEDAR AVE,	2008
4/24/2019	HDVIP	Tampering	N		W/B NORTH AVE BETWEEN HWY 99 AND CEDAR AVE,	2008
4/24/2019	HDVIP	Quick Snap	N		W/B NORTH AVE BETWEEN HWY 99 AND CEDAR AVE,	
4/24/2019	HDVIP	ECL	Y	Emission	W/B NORTH AVE BETWEEN HWY 99 AND CEDAR AVE,	
4/24/2019	HDVIP	Tampering	N		W/B NORTH AVE BETWEEN HWY 99 AND CEDAR AVE,	
4/24/2019	HDVIP	Quick Snap	N		W/B NORTH AVE BETWEEN HWY 99 AND CEDAR AVE,	2015

Inspection Date	Program	Inspection	Citation Issued (Y/N)	Violation Type (Emission or Non-Emission)	Location	Engine Year
4/24/2019	HDVIP	ECL	N		W/B NORTH AVE BETWEEN HWY 99 AND CEDAR AVE,	2015
4/24/2019	HDVIP	Tampering	N		W/B NORTH AVE BETWEEN HWY 99 AND CEDAR AVE,	2015
4/24/2019	HDVIP	Quick Snap	N		W/B NORTH AVE BETWEEN HWY 99 AND CEDAR AVE,	2011
4/24/2019	HDVIP	ECL	N		W/B NORTH AVE BETWEEN HWY 99 AND CEDAR AVE,	2011
4/24/2019	HDVIP	Tampering	N		W/B NORTH AVE BETWEEN HWY 99 AND CEDAR AVE,	2011
4/24/2019	HDVIP	Quick Snap	N		W/B NORTH AVE BETWEEN HWY 99 AND CEDAR AVE,	
4/24/2019	HDVIP	ECL	Y	Emission	W/B NORTH AVE BETWEEN HWY 99 AND CEDAR AVE,	
4/24/2019	HDVIP	Tampering	N		W/B NORTH AVE BETWEEN HWY 99 AND CEDAR AVE,	
4/24/2019	HDVIP	Quick Snap	N		W/B NORTH AVE BETWEEN HWY 99 AND CEDAR AVE,	2008
4/24/2019	HDVIP	ECL	N		W/B NORTH AVE BETWEEN HWY 99 AND CEDAR AVE,	2008
4/24/2019	HDVIP	Tampering	N		W/B NORTH AVE BETWEEN HWY 99 AND CEDAR AVE,	2008
4/24/2019	HDVIP	Quick Snap	N		W/B NORTH AVE BETWEEN HWY 99 AND CEDAR AVE,	2014
4/24/2019	HDVIP	ECL	N		W/B NORTH AVE BETWEEN HWY 99 AND CEDAR AVE,	2014
4/24/2019	HDVIP	Tampering	N		W/B NORTH AVE BETWEEN HWY 99 AND CEDAR AVE,	2014
4/24/2019	HDVIP	Quick Snap	N		W/B NORTH AVE BETWEEN HWY 99 AND CEDAR AVE,	2014
4/24/2019	HDVIP	ECL	N		W/B NORTH AVE BETWEEN HWY 99 AND CEDAR AVE,	2014
4/24/2019	HDVIP	Tampering	N		W/B NORTH AVE BETWEEN HWY 99 AND CEDAR AVE,	2014
4/24/2019	HDVIP	Quick Snap	N		W/B NORTH AVE BETWEEN HWY 99 AND CEDAR AVE,	
4/24/2019	HDVIP	ECL	N		W/B NORTH AVE BETWEEN HWY 99 AND CEDAR AVE,	

Inspection Date	Program	Inspection	Citation Issued (Y/N)	Violation Type (Emission or Non-Emission)	Location	Engine Year
4/24/2019	HDVIP	Tampering	Y	Emission	W/B NORTH AVE BETWEEN HWY 99 AND CEDAR AVE,	
4/24/2019	HDVIP	Quick Snap	N		W/B NORTH AVE BETWEEN HWY 99 AND CEDAR AVE,	
4/24/2019	HDVIP	ECL	Y	Emission	W/B NORTH AVE BETWEEN HWY 99 AND CEDAR AVE,	
4/24/2019	HDVIP	Tampering	N		W/B NORTH AVE BETWEEN HWY 99 AND CEDAR AVE,	
4/24/2019	HDVIP	Quick Snap	N		W/B NORTH AVE BETWEEN HWY 99 AND CEDAR AVE,	2009
4/24/2019	HDVIP	ECL	N		W/B NORTH AVE BETWEEN HWY 99 AND CEDAR AVE,	2009
4/24/2019	HDVIP	Tampering	N		W/B NORTH AVE BETWEEN HWY 99 AND CEDAR AVE,	2009
4/24/2019	HDVIP	Quick Snap	N		W/B NORTH AVE BETWEEN HWY 99 AND CEDAR AVE,	2009
4/24/2019	HDVIP	ECL	N		W/B NORTH AVE BETWEEN HWY 99 AND CEDAR AVE,	2009
4/24/2019	HDVIP	Tampering	N		W/B NORTH AVE BETWEEN HWY 99 AND CEDAR AVE,	2009
4/24/2019	HDVIP	Quick Snap	N		W/B NORTH AVE BETWEEN HWY 99 AND CEDAR AVE,	2014
4/24/2019	HDVIP	ECL	N		W/B NORTH AVE BETWEEN HWY 99 AND CEDAR AVE,	2014
4/24/2019	HDVIP	Tampering	N		W/B NORTH AVE BETWEEN HWY 99 AND CEDAR AVE,	2014
4/24/2019	HDVIP	Quick Snap	N		W/B NORTH AVE BETWEEN HWY 99 AND CEDAR AVE,	2008
4/24/2019	HDVIP	ECL	N		W/B NORTH AVE BETWEEN HWY 99 AND CEDAR AVE,	2008
4/24/2019	HDVIP	Tampering	N		W/B NORTH AVE BETWEEN HWY 99 AND CEDAR AVE,	2008
4/24/2019	Smart Way		N		W/B NORTH AVE BETWEEN HWY 99 AND CEDAR AVE,	
4/24/2019	Smart Way		N		W/B NORTH AVE BETWEEN HWY 99 AND CEDAR AVE,	
4/24/2019	Smart Way		N		W/B NORTH AVE BETWEEN HWY 99 AND CEDAR AVE,	

Inspection Date	Program	Inspection	Citation Issued (Y/N)	Violation Type (Emission or Non-Emission)	Location	Engine Year
4/24/2019	Smart Way		N		W/B NORTH AVE BETWEEN HWY 99 AND CEDAR AVE,	
4/24/2019	Smart Way		N		W/B NORTH AVE BETWEEN HWY 99 AND CEDAR AVE,	
4/24/2019	Smart Way		N		W/B NORTH AVE BETWEEN HWY 99 AND CEDAR AVE,	
4/24/2019	Smart Way		Y	Emission	W/B NORTH AVE BETWEEN HWY 99 AND CEDAR AVE,	
4/24/2019	Smart Way		Y	Emission	W/B NORTH AVE BETWEEN HWY 99 AND CEDAR AVE,	
4/24/2019	TRU		N		W/B NORTH AVE BETWEEN HWY 99 AND CEDAR AVE,	
4/24/2019	TRU		N		W/B NORTH AVE BETWEEN HWY 99 AND CEDAR AVE,	
4/24/2019	Truck & Bus		N		W/B NORTH AVE BETWEEN HWY 99 AND CEDAR AVE,	2011
4/24/2019	Truck & Bus		N		W/B NORTH AVE BETWEEN HWY 99 AND CEDAR AVE,	2008
4/24/2019	Truck & Bus		N		W/B NORTH AVE BETWEEN HWY 99 AND CEDAR AVE,	
4/24/2019	Truck & Bus		N		W/B NORTH AVE BETWEEN HWY 99 AND CEDAR AVE,	
4/24/2019	Truck & Bus		N		W/B NORTH AVE BETWEEN HWY 99 AND CEDAR AVE,	2012
4/24/2019	Truck & Bus		N		W/B NORTH AVE BETWEEN HWY 99 AND CEDAR AVE,	
4/24/2019	Truck & Bus		N		W/B NORTH AVE BETWEEN HWY 99 AND CEDAR AVE,	2015
4/24/2019	Truck & Bus		N		W/B NORTH AVE BETWEEN HWY 99 AND CEDAR AVE,	2011
4/24/2019	Truck & Bus		N		W/B NORTH AVE BETWEEN HWY 99 AND CEDAR AVE,	2008
4/24/2019	Truck & Bus		N		W/B NORTH AVE BETWEEN HWY 99 AND CEDAR AVE,	2014
4/24/2019	Truck & Bus		N		W/B NORTH AVE BETWEEN HWY 99 AND CEDAR AVE,	2014
4/24/2019	Truck & Bus		N		W/B NORTH AVE BETWEEN HWY 99 AND CEDAR AVE,	2009

Inspection Date	Program	Inspection	Citation Issued (Y/N)	Violation Type (Emission or Non-Emission)	Location	Engine Year
4/24/2019	Truck & Bus		N		W/B NORTH AVE BETWEEN HWY 99 AND CEDAR AVE,	2009
4/24/2019	Truck & Bus		N		W/B NORTH AVE BETWEEN HWY 99 AND CEDAR AVE,	2014
4/24/2019	Truck & Bus		N		W/B NORTH AVE BETWEEN HWY 99 AND CEDAR AVE,	
4/24/2019	Truck & Bus		N		W/B NORTH AVE BETWEEN HWY 99 AND CEDAR AVE,	2008
10/22/2019	HDVIP	Quick Snap	N		W/B ON NORTH AVE @ HWY 99,	2011
10/22/2019	HDVIP	ECL	Y	Emission	W/B ON NORTH AVE @ HWY 99,	2011
10/22/2019	HDVIP	Tampering	N		W/B ON NORTH AVE @ HWY 99,	2011
10/22/2019	HDVIP	Quick Snap	N		W/B ON NORTH AVE @ HWY 99,	2013
10/22/2019	HDVIP	ECL	N		W/B ON NORTH AVE @ HWY 99,	2013
10/22/2019	HDVIP	Tampering	N		W/B ON NORTH AVE @ HWY 99,	2013
10/22/2019	HDVIP	Quick Snap	N		W/B ON NORTH AVE @ HWY 99,	
10/22/2019	HDVIP	ECL	Y	Emission	W/B ON NORTH AVE @ HWY 99,	
10/22/2019	HDVIP	Tampering	N		W/B ON NORTH AVE @ HWY 99,	
10/22/2019	HDVIP	Quick Snap	N		W/B ON NORTH AVE @ HWY 99,	2010
10/22/2019	HDVIP	ECL	N		W/B ON NORTH AVE @ HWY 99,	2010
10/22/2019	HDVIP	Tampering	N		W/B ON NORTH AVE @ HWY 99,	2010
10/22/2019	HDVIP	Quick Snap	N		W/B ON NORTH AVE @ HWY 99,	
10/22/2019	HDVIP	ECL	Y	Emission	W/B ON NORTH AVE @ HWY 99,	
10/22/2019	HDVIP	Tampering	N		W/B ON NORTH AVE @ HWY 99,	
10/22/2019	HDVIP	Quick Snap	N		W/B ON NORTH AVE @ HWY 99,	2019
10/22/2019	HDVIP	ECL	N		W/B ON NORTH AVE @ HWY 99,	2019
10/22/2019	HDVIP	Tampering	N		W/B ON NORTH AVE @ HWY 99,	2019
10/22/2019	HDVIP	Quick Snap	N		W/B ON NORTH AVE @ HWY 99,	
10/22/2019	HDVIP	ECL	Y	Emission	W/B ON NORTH AVE @ HWY 99,	
10/22/2019	HDVIP	Tampering	N		W/B ON NORTH AVE @ HWY 99,	
10/22/2019	HDVIP	Quick Snap	N		W/B ON NORTH AVE @ HWY 99,	2011

Inspection Date	Program	Inspection	Citation Issued (Y/N)	Violation Type (Emission or Non-Emission)	Location	Engine Year
10/22/2019	HDVIP	ECL	N		W/B ON NORTH AVE @ HWY 99,	2011
10/22/2019	HDVIP	Tampering	N		W/B ON NORTH AVE @ HWY 99,	2011
10/22/2019	HDVIP	Quick Snap	N		W/B ON NORTH AVE @ HWY 99,	2019
10/22/2019	HDVIP	ECL	N		W/B ON NORTH AVE @ HWY 99,	2019
10/22/2019	HDVIP	Tampering	N		W/B ON NORTH AVE @ HWY 99,	2019
10/22/2019	HDVIP	Quick Snap	N		W/B ON NORTH AVE @ HWY 99,	2017
10/22/2019	HDVIP	ECL	N		W/B ON NORTH AVE @ HWY 99,	2017
10/22/2019	HDVIP	Tampering	N		W/B ON NORTH AVE @ HWY 99,	2017
10/22/2019	HDVIP	Quick Snap	N		W/B ON NORTH AVE @ HWY 99,	2017
10/22/2019	HDVIP	ECL	N		W/B ON NORTH AVE @ HWY 99,	2017
10/22/2019	HDVIP	Tampering	N		W/B ON NORTH AVE @ HWY 99,	2017
10/22/2019	HDVIP	Quick Snap	N		W/B ON NORTH AVE @ HWY 99,	2009
10/22/2019	HDVIP	ECL	N		W/B ON NORTH AVE @ HWY 99,	2009
10/22/2019	HDVIP	Tampering	N		W/B ON NORTH AVE @ HWY 99,	2009
10/22/2019	HDVIP	Quick Snap	N		W/B ON NORTH AVE @ HWY 99,	2007
10/22/2019	HDVIP	ECL	N		W/B ON NORTH AVE @ HWY 99,	2007
10/22/2019	HDVIP	Tampering	N		W/B ON NORTH AVE @ HWY 99,	2007
10/22/2019	HDVIP	Quick Snap	N		W/B ON NORTH AVE @ HWY 99,	
10/22/2019	HDVIP	ECL	Y	Emission	W/B ON NORTH AVE @ HWY 99,	
10/22/2019	HDVIP	Tampering	N		W/B ON NORTH AVE @ HWY 99,	
10/22/2019	HDVIP	Quick Snap	N		W/B ON NORTH AVE @ HWY 99,	2014
10/22/2019	HDVIP	ECL	N		W/B ON NORTH AVE @ HWY 99,	2014
10/22/2019	HDVIP	Tampering	N		W/B ON NORTH AVE @ HWY 99,	2014
10/22/2019	HDVIP	Quick Snap	N		W/B ON NORTH AVE @ HWY 99,	2014
10/22/2019	HDVIP	ECL	N		W/B ON NORTH AVE @ HWY 99,	2014
10/22/2019	HDVIP	Tampering	N		W/B ON NORTH AVE @ HWY 99,	2014
10/22/2019	HDVIP	Quick Snap	N		W/B ON NORTH AVE @ HWY 99,	2017
10/22/2019	HDVIP	ECL	N		W/B ON NORTH AVE @ HWY 99,	2017

Inspection Date	Program	Inspection	Citation Issued (Y/N)	Violation Type (Emission or Non-Emission)	Location	Engine Year
10/22/2019	HDVIP	Tampering	N		W/B ON NORTH AVE @ HWY 99,	2017
10/22/2019	HDVIP	Quick Snap	N		W/B ON NORTH AVE @ HWY 99,	2010
10/22/2019	HDVIP	ECL	N		W/B ON NORTH AVE @ HWY 99,	2010
10/22/2019	HDVIP	Tampering	N		W/B ON NORTH AVE @ HWY 99,	2010
10/22/2019	Smart Way		N		W/B ON NORTH AVE @ HWY 99,	
10/22/2019	Smart Way		Y	Emission	W/B ON NORTH AVE @ HWY 99,	
10/22/2019	Smart Way		N		W/B ON NORTH AVE @ HWY 99,	
10/22/2019	Smart Way		Y	Emission	W/B ON NORTH AVE @ HWY 99,	
10/22/2019	Smart Way		Y	Emission	W/B ON NORTH AVE @ HWY 99,	
10/22/2019	Smart Way		N		W/B ON NORTH AVE @ HWY 99,	
10/22/2019	TRU		N		W/B ON NORTH AVE @ HWY 99,	
10/22/2019	TRU		N		W/B ON NORTH AVE @ HWY 99,	
10/22/2019	TRU		N		W/B ON NORTH AVE @ HWY 99,	2017
10/22/2019	TRU		Y	Non-Emissions	W/B ON NORTH AVE @ HWY 99,	2007
10/22/2019	TRU		N		W/B ON NORTH AVE @ HWY 99,	
10/22/2019	TRU		N		W/B ON NORTH AVE @ HWY 99,	
10/22/2019	TRU		N		W/B ON NORTH AVE @ HWY 99,	
10/22/2019	TRU		N		W/B ON NORTH AVE @ HWY 99,	
10/22/2019	TRU		N		W/B ON NORTH AVE @ HWY 99,	
10/22/2019	Truck & Bus		N		W/B ON NORTH AVE @ HWY 99,	2011
10/22/2019	Truck & Bus		N		W/B ON NORTH AVE @ HWY 99,	2010
10/22/2019	Truck & Bus		N		W/B ON NORTH AVE @ HWY 99,	
10/22/2019	Truck & Bus		N		W/B ON NORTH AVE @ HWY 99,	2013
10/22/2019	Truck & Bus		N		W/B ON NORTH AVE @ HWY 99,	
10/22/2019	Truck & Bus		N		W/B ON NORTH AVE @ HWY 99,	2019
10/22/2019	Truck & Bus		N		W/B ON NORTH AVE @ HWY 99,	2011
10/22/2019	Truck & Bus		N		W/B ON NORTH AVE @ HWY 99,	
10/22/2019	Truck & Bus		N		W/B ON NORTH AVE @ HWY 99,	2019

Inspection Date	Program	Inspection	Citation Issued (Y/N)	Violation Type (Emission or Non-Emission)	Location	Engine Year
10/22/2019	Truck & Bus		N		W/B ON NORTH AVE @ HWY 99,	2007
10/22/2019	Truck & Bus		N		W/B ON NORTH AVE @ HWY 99,	2017
10/22/2019	Truck & Bus		N		W/B ON NORTH AVE @ HWY 99,	2017
10/22/2019	Truck & Bus		N		W/B ON NORTH AVE @ HWY 99,	2009
10/22/2019	Truck & Bus		N		W/B ON NORTH AVE @ HWY 99,	
10/22/2019	Truck & Bus		N		W/B ON NORTH AVE @ HWY 99,	2017
10/22/2019	Truck & Bus		N		W/B ON NORTH AVE @ HWY 99,	2010
10/22/2019	Truck & Bus		N		W/B ON NORTH AVE @ HWY 99,	2014
10/22/2019	Truck & Bus		N		W/B ON NORTH AVE @ HWY 99,	2014

APPENDIX 3 – CalEPA Complaint Data – 2019

Complaint Number	Created Date	Date Referred	AB617	Abbreviated Description	Resolution
COMP-46668	12/11/2019	12/11/2019	Fresno	A.Q. Concern	Referred to appropriate agency
COMP-46345	10/28/2019	10/29/2019	Fresno	A.Q. Concerns, Health Concerns	Referred to appropriate agency
COMP-46549	11/21/2019	11/22/2019	Fresno	Illegal Dumping	Referred to appropriate agency
COMP-42307	4/3/2019	4/8/2019	Fresno	Stationary Source, Odor, Dust	Referred to appropriate agency
COMP-42674	4/22/2019	4/22/2019	Fresno	Dust, Stationary Source	Referred to appropriate agency
COMP-46300	10/23/2019	10/24/2019	Fresno	A.Q. Concerns, Indoor A.Q.	Referred to appropriate agency

APPENDIX 4 – Diesel Complaint Data – 2019

Complaint Number	City	Date Submitted	Complaint type
2922	Fresno	6/24/2019 9:38	Smoking Vehicle - Periodic Smoke Inspection
2983	Fresno	7/15/2019 14:07	Truck & Bus
3111	Fresno	8/20/2019 10:40	Smoking Vehicle - Periodic Smoke Inspection
3113	Fresno	8/20/2019 12:08	Smoking Vehicle - Periodic Smoke Inspection