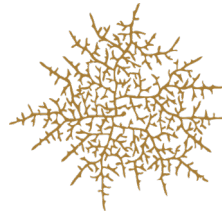


Urban Greening and Vegetative Barriers Update

Stockton AB 617 CSC

June 3, 2026



hyphæ design laboratory
Ecological Design & Engineering



Updates on Urban Greening Project

San Joaquin County Parks and Recreation Independent Contractor Agreement

- ❖ Executed agreement on April 27th, 2026
 - Non-compensated, in-kind tree planting and maintenance at parks throughout the project area
 - Taft Park
 - Boggs Tract Park
 - Kennedy Park
- ❖ Negotiating Maintenance Agreement
 - 4 year maintenance agreement before SJ County fully incorporates tree care into their operations
 - All SJ park irrigation systems are being upgraded this year
 - LMR staff will work with SJ County Senior Park staff to design plantings in irrigated areas only
 - Expecting to complete planting plans by mid July.

Updates on Urban Greening Project

Urban Greening tree count

- ❖ 10 trees planted on 6 residential properties through My Free Tree as of 6/2/26
- ❖ 5 new MFT Stewards have been contacted to schedule site assessments in June
- ❖ Planting season is wrapping up for this spring
- ❖ If you are interested in scheduling a site assessment on your property, email us at trees@littlemanila.org

Milestone Date	Project Activity
June 2026	Completion of neighborhood-wide prioritization analysis to guide field teams.
July 2026	Crew recruitment push and finalization of species/tree choices for upcoming fall 2026 plantings.
Fall 2026	Implementation of distributed planting across identified residential and park sites.
Spring 2027	Installation of Vegetated Buffer pilots following 10-15 ideal site locations land access negotiations.

Brookside
Country Club

5

Stockton

B

CA4

CA4



B

B

B

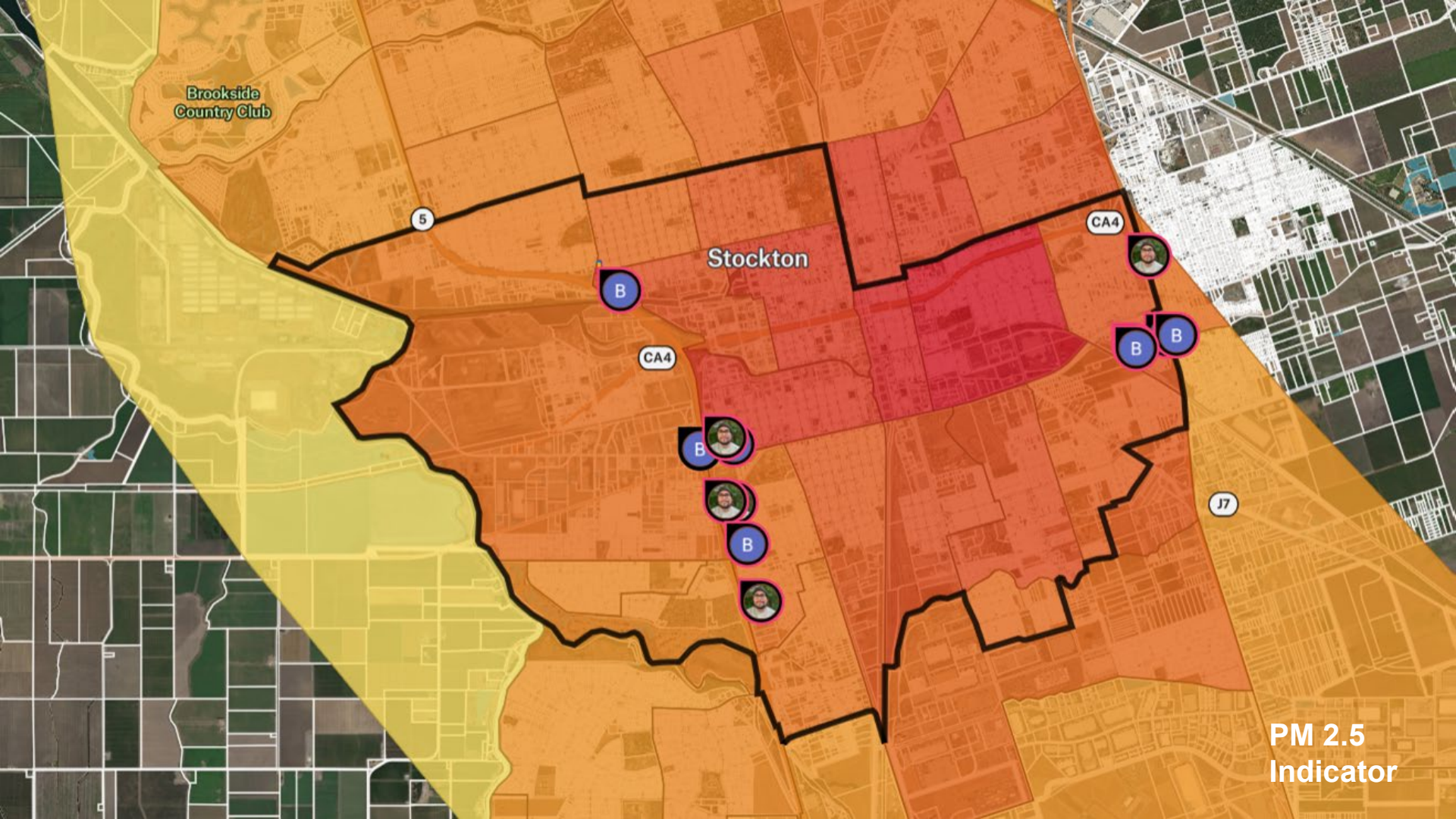


B



J7

Asthma
Indicator



Brookside
Country Club

5

B

CA4

B

B

B

B

B

B

B

B

B

B

B

B

B

B

B

B

B

B

B

B

B

B

B

B

B

B

B

B

B

B

B

B

B

B

B

B

B

B

B

B

B

B

B

B

B

B

B

B

B

B

B

B

B

B

B

B

B

B

B

B

B

B

B

B

B

B

B

B

B

B

B

B

B

B

B

B

B

B

B

B

B

B

B

B

B

B

B

B

B

B

B

B

B

B

B

B

B

B

B

B

B

B

B

B

B

B

B

B

B

B

B

B

B

B

B

B

B

B

B

B

B

B

B

B

B

B

B

B

B

B

B

B

B

B

B

B

B

B

B

B

B

B

B

B

B

B

B

B

B

B

B

B

B

B

B

B

B

B

B

B

B

B

B

B

B

B

B

B

B

B

B

B

B

B

B

B

B

B

B

B

B

B

B

B

B

B

B

B

B

CA4

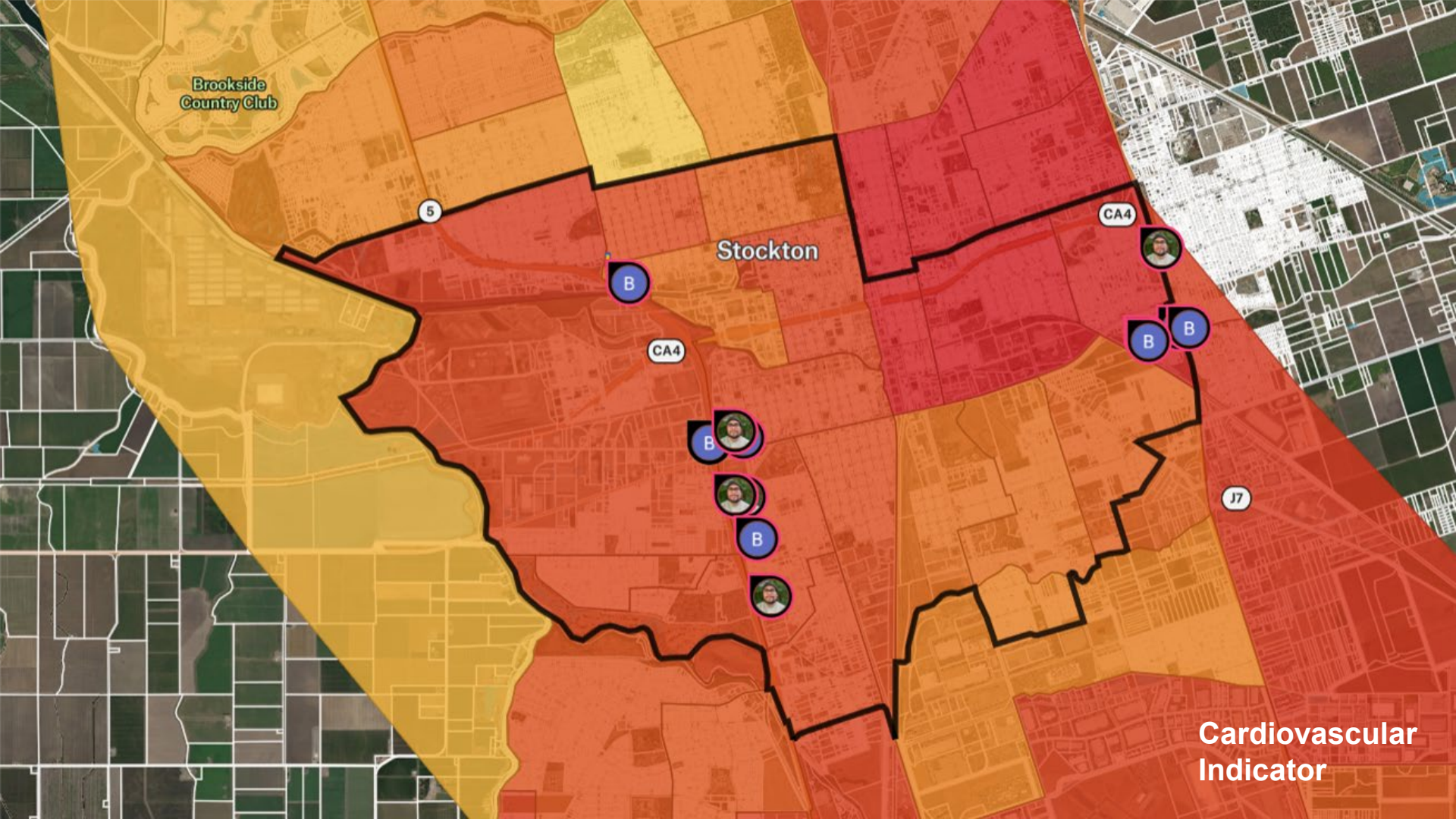
B

B

B

J7

PM 2.5
Indicator



Brookside
Country Club

5

Stockton

B

CA4

B

B

B

B

CA4

B

B

J7

Cardiovascular
Indicator

Census2020Block

- Block 1000
- Block 1001
- Block 1002
- Block 1003
- Block 1004
- Block 2000
- Block 2001
- Block 2002
- Block 2003
- Block 1005
- Block 2004

Show 246 more ▾

Nedcontours

Zoning

Edge Of Pavement

Enviroscreen Urbangreening

Lmr Trees



From Census
Blocks to Tracts

Brookside
Country Club

5

Stockton

CA4

CA4

J7

**Stockton Ecostress Land Surface
Temperature Farenheit Afternoon
August 22Nd 2025 Clipped**

- 79.54 to 91.63
- 91.63 to 97.97
- 97.97 to 103.73
- 103.73 to 108.77
- 108.77 to 120.07





East Taylor Street

Anderson Street

Burkett Avenue

East Taylor Street

Diamond Street

Anderson Street

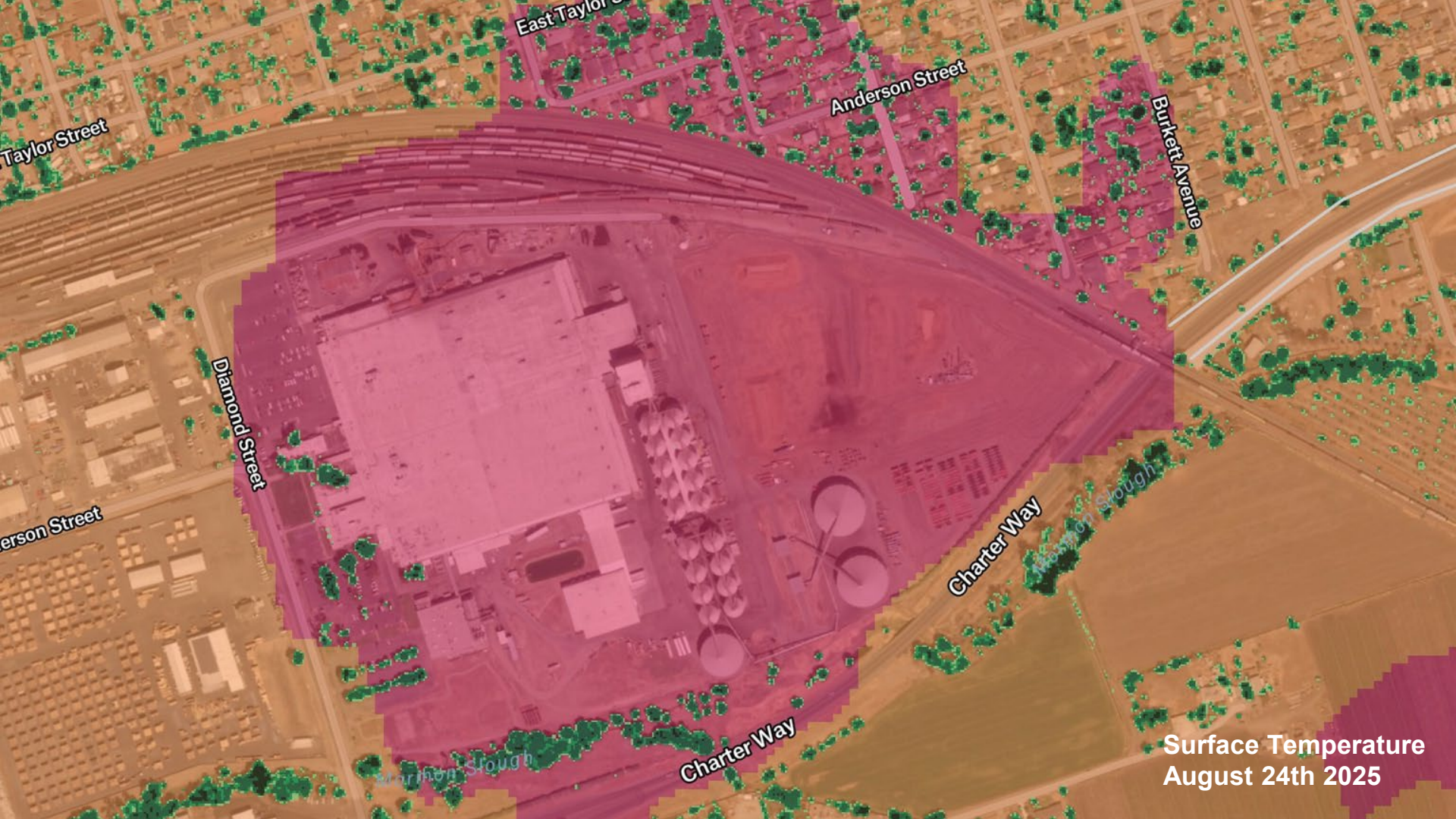
Charter Way

Charter Slough

Charter Way

Charter Slough

Surface Temperature
August 24th 2025



Taylor Street

East Taylor Street

Anderson Street

Burkett Avenue

Diamond Street

erson Street

Charter Way

Slough

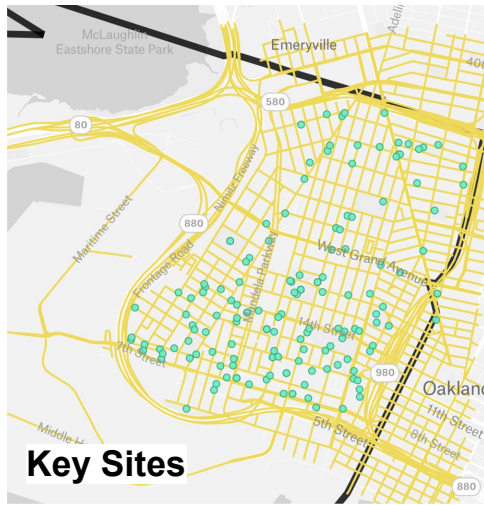
Charter Way

Slough

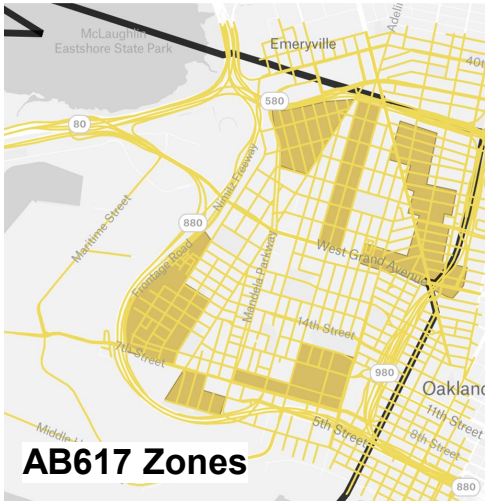
Surface Temperature
August 24th 2025



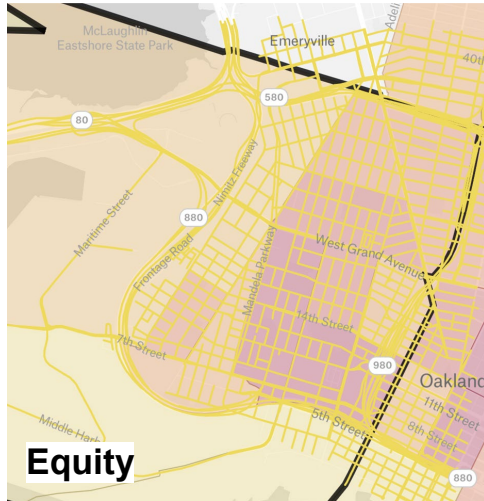
PM 2.5



Key Sites



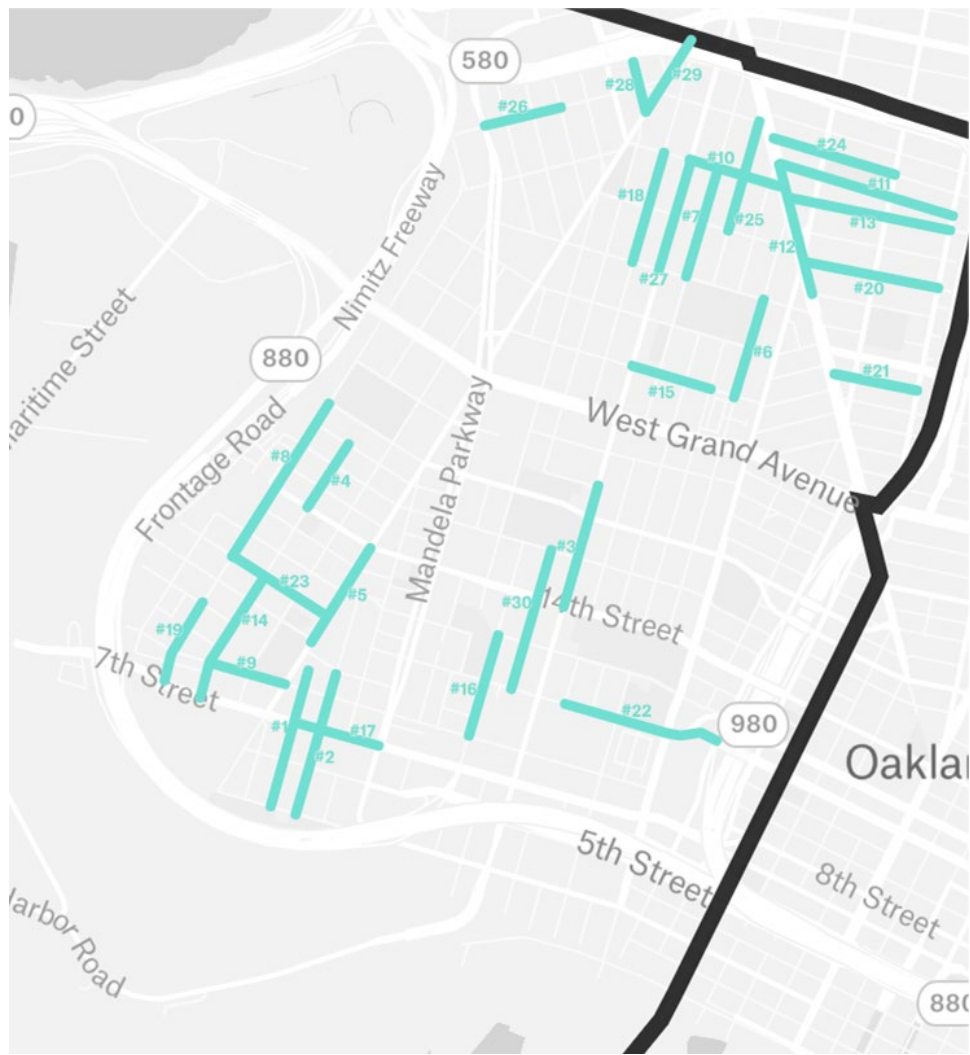
AB617 Zones



Equity

For Prioritization in Oakland we used:

- PM2.5
- Distance to key sites
- AB617 zones
- Equity
- Property ownership data
- Pedestrian counts
- Community survey data
- Curb ramp compliance



- Each layer is added to the map
- Each layer type can be given a score
- These scores are combined together into one map
- The highest priority areas can be identified

Legend [List](#)

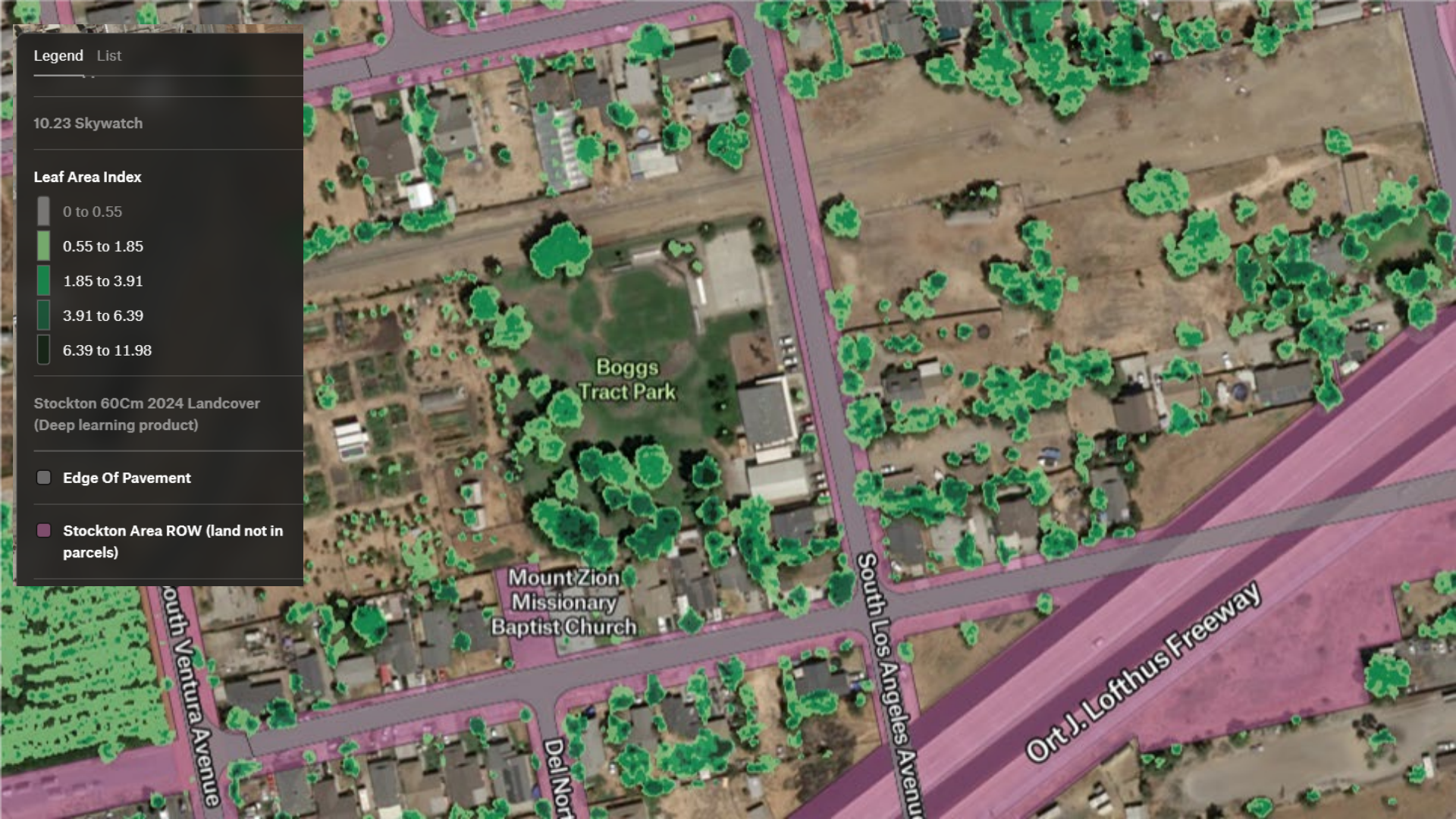
10.23 Skywatch

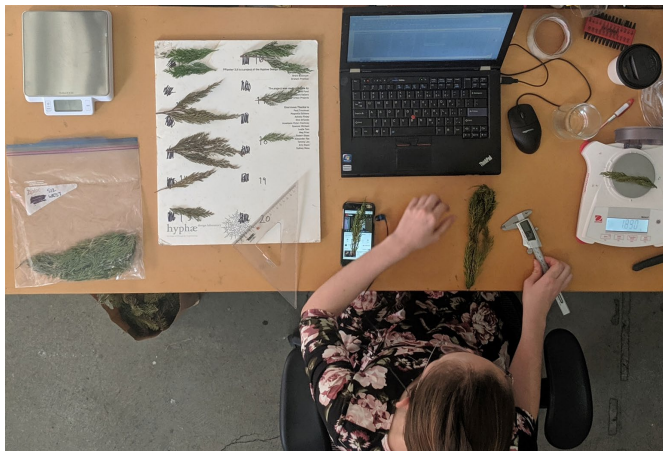
Leaf Area Index

- 0 to 0.55
- 0.55 to 1.85
- 1.85 to 3.91
- 3.91 to 6.39
- 6.39 to 11.98

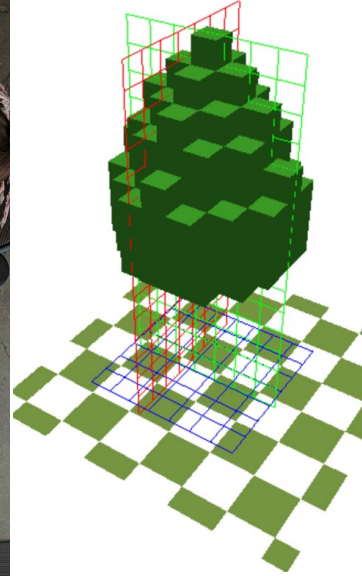
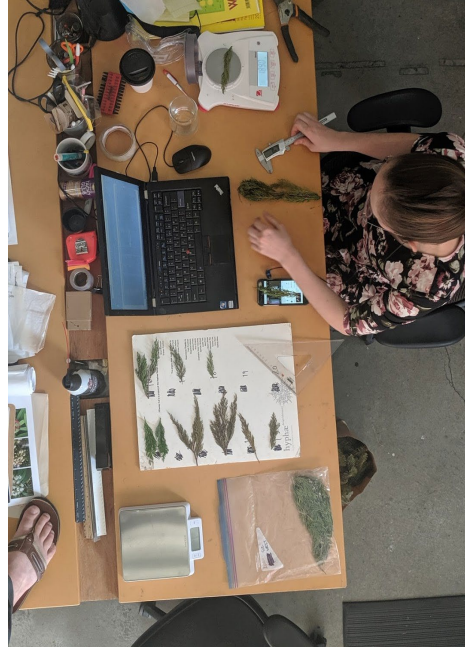
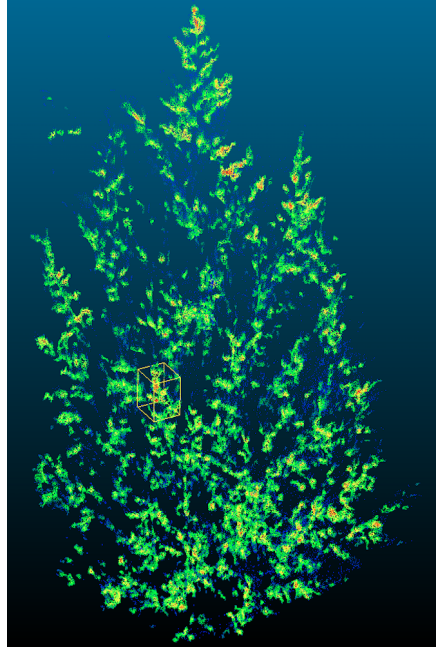
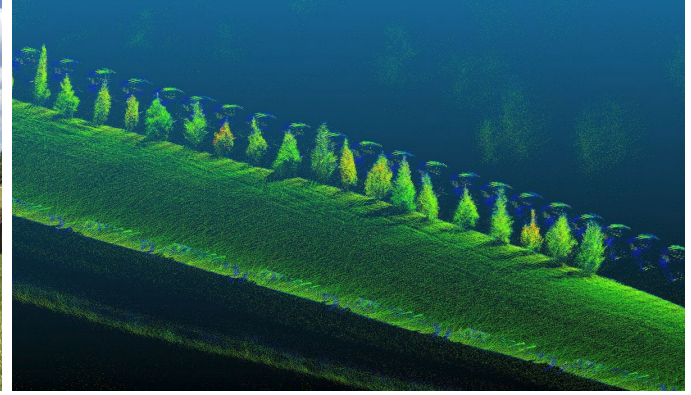
Stockton 60cm 2024 Landcover
(Deep learning product)

- Edge Of Pavement
- Stockton Area ROW (land not in parcels)





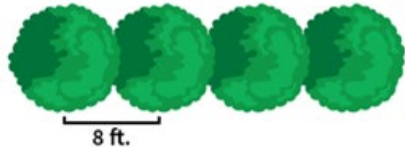
Measuring the leaf area density of trees to input into our models



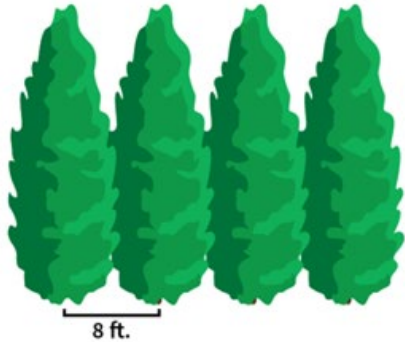
Vegetated Buffers: Using trees as technology

Row Planting

overhead view

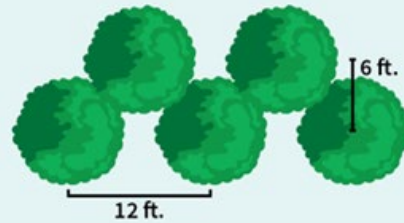


side view

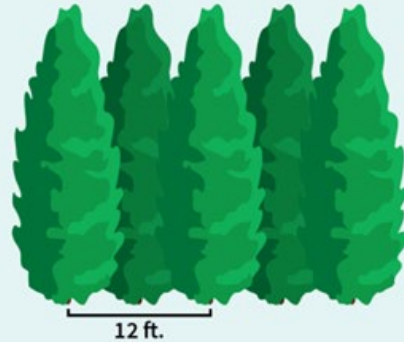


Alternate Planting

overhead view



side view



Vegetated air barriers optimized for mitigating air pollution must be planted close together without any gaps, otherwise the pollution can squeeze through!

Planting a vegetated buffer closer to the source of pollution is more effective at blocking that pollution



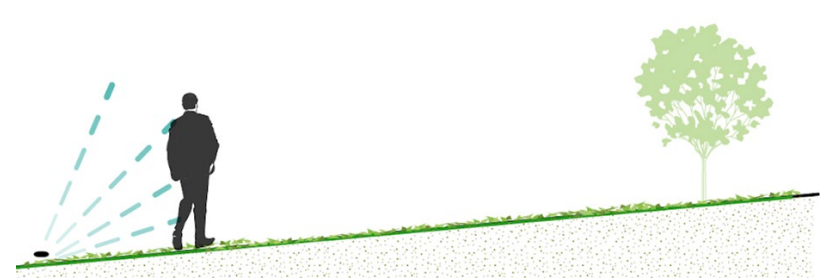
Less effective at blocking



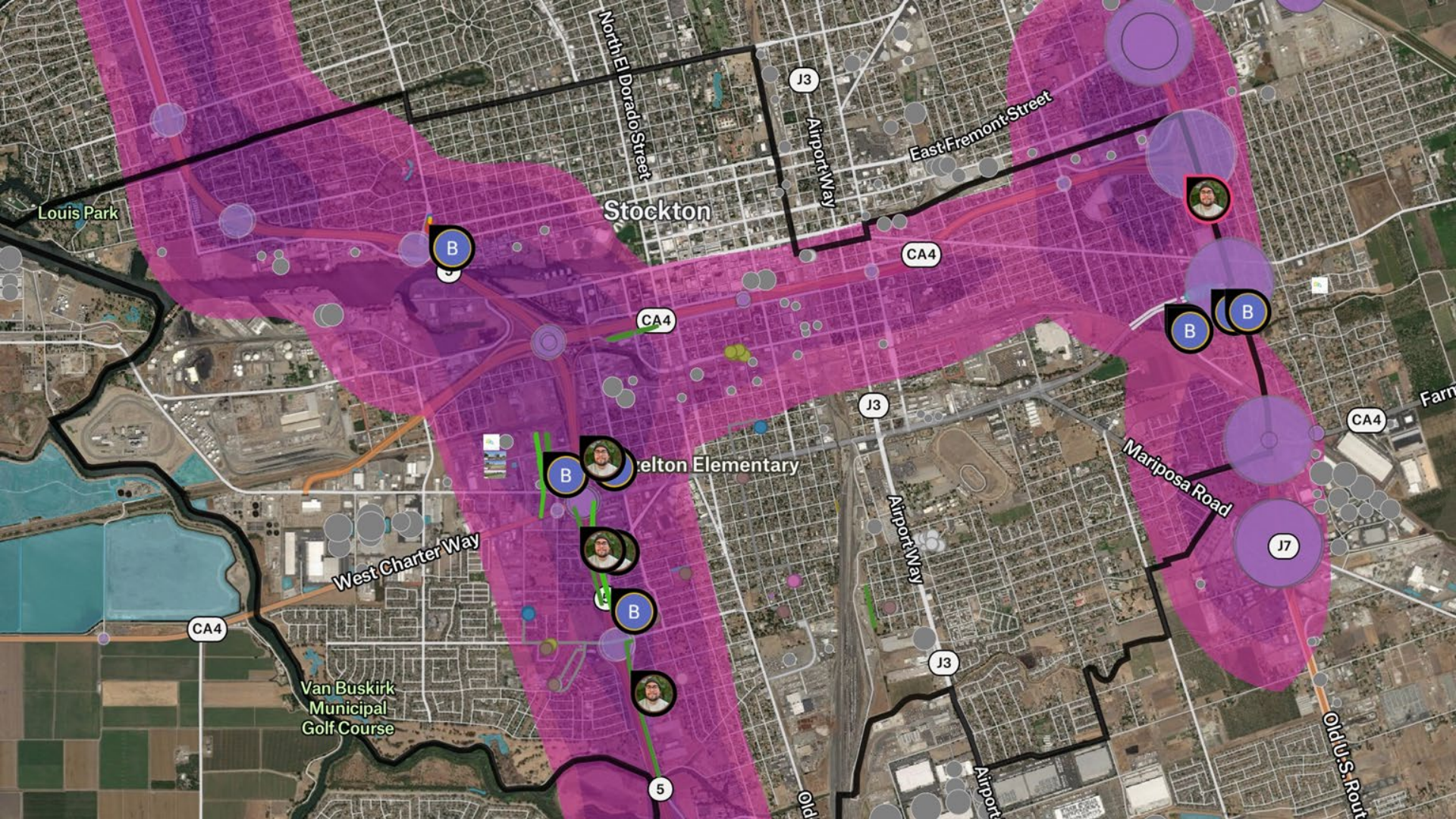
Less effective at blocking

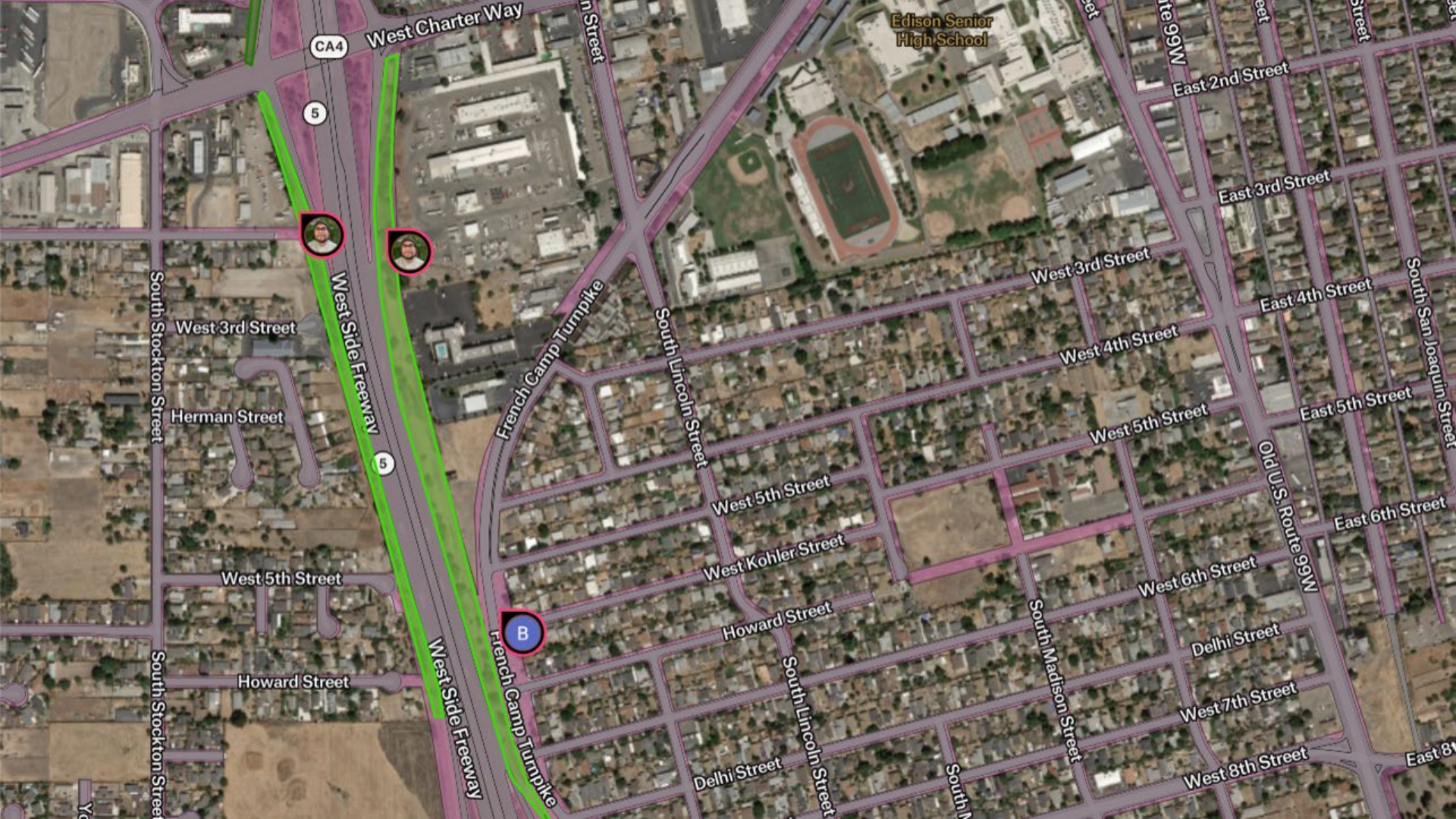


More effective at blocking



More effective at blocking





CA4

West Charter Way

5



West Side Freeway

5

French Camp Turnpike

B

French Camp Turnpike

Edison Senior High School

South Stockton Street

West 3rd Street

Herman Street

West 5th Street

Howard Street

South Lincoln Street

West 5th Street

West Kohler Street

Howard Street

Delhi Street

South Lincoln Street

South Madison Street

West 3rd Street

West 4th Street

West 5th Street

West 5th Street

West Kohler Street

Howard Street

Delhi Street

South Lincoln Street

South Madison Street

West 3rd Street

West 4th Street

West 5th Street

West 6th Street

West 7th Street

West 8th Street

East 3rd Street

East 4th Street

East 5th Street

East 6th Street

East 8th Street

East 2nd Street

East 4th Street

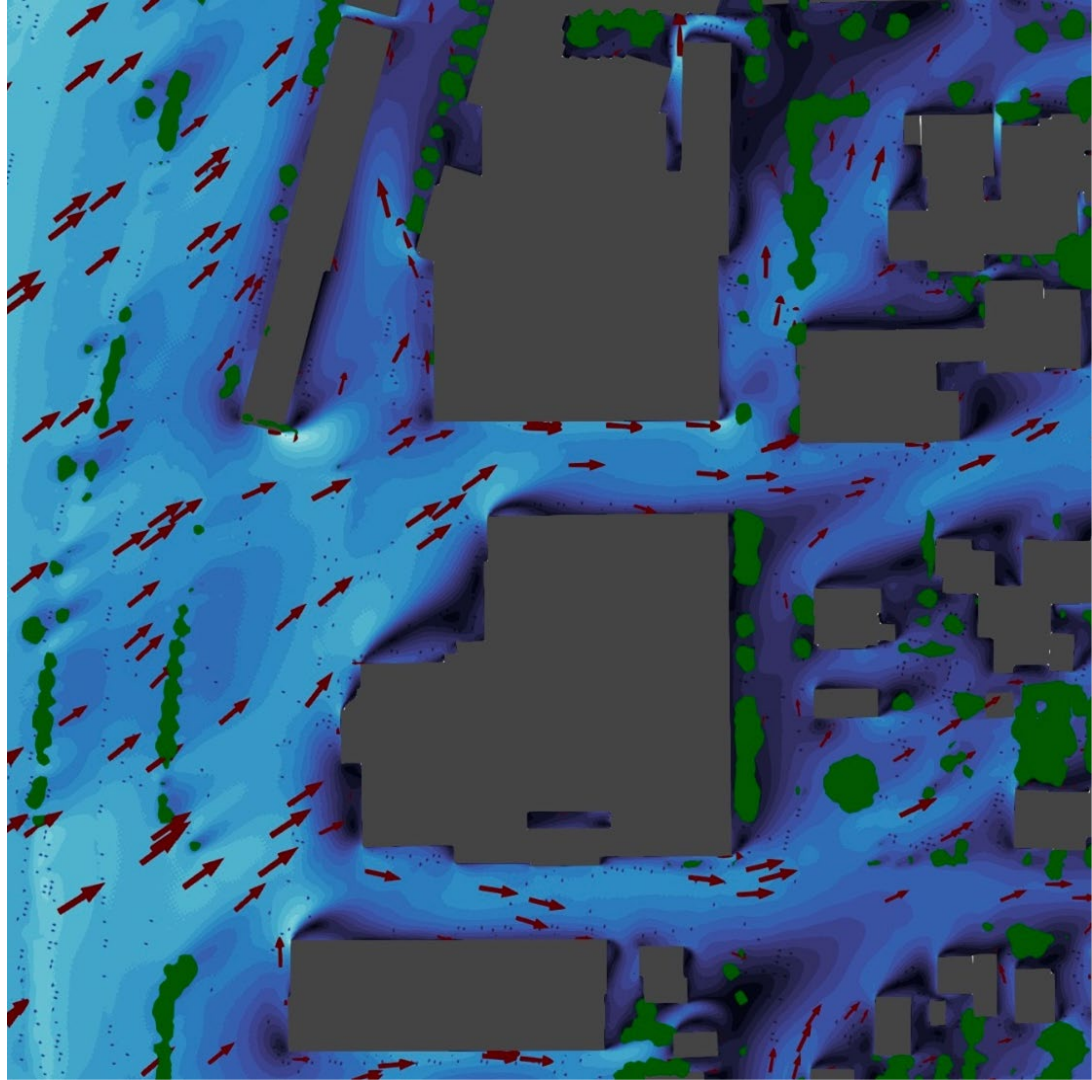
East 5th Street

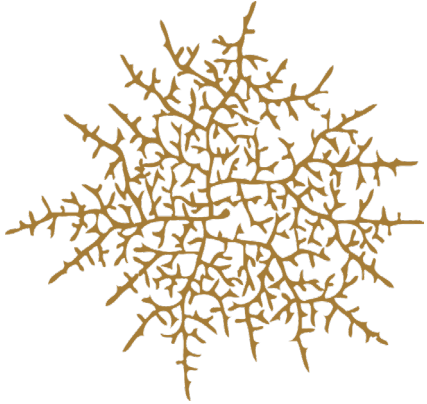
East 6th Street

East 8th Street

Old U.S. Route 99W

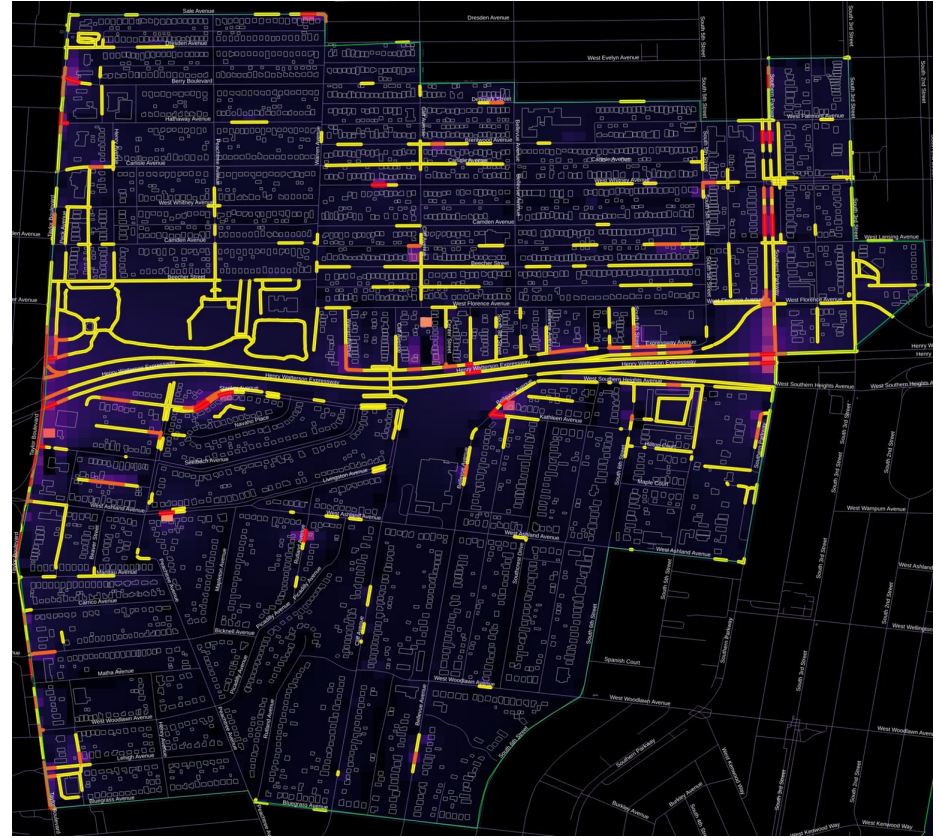
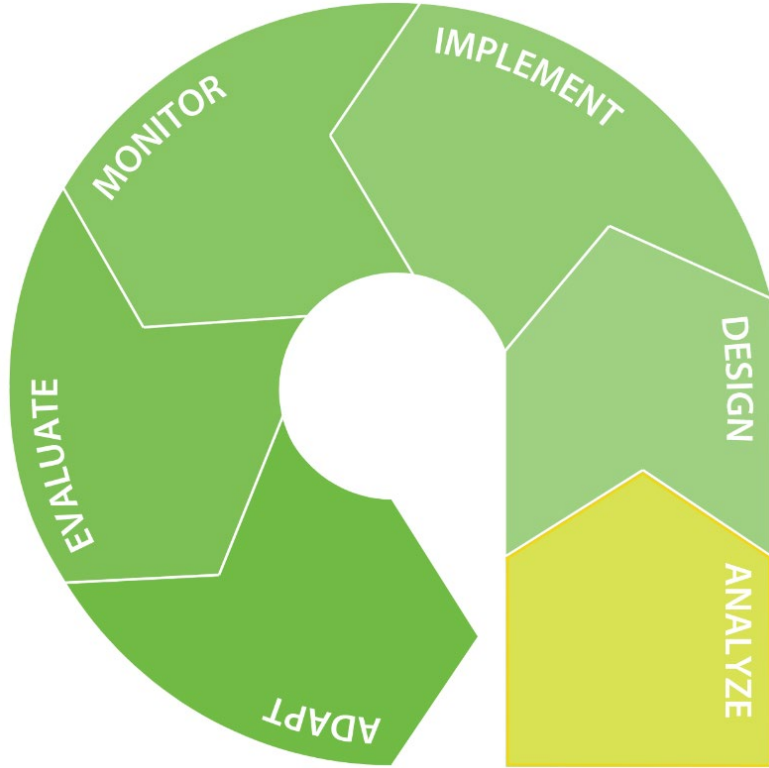
South San Joaquin Street





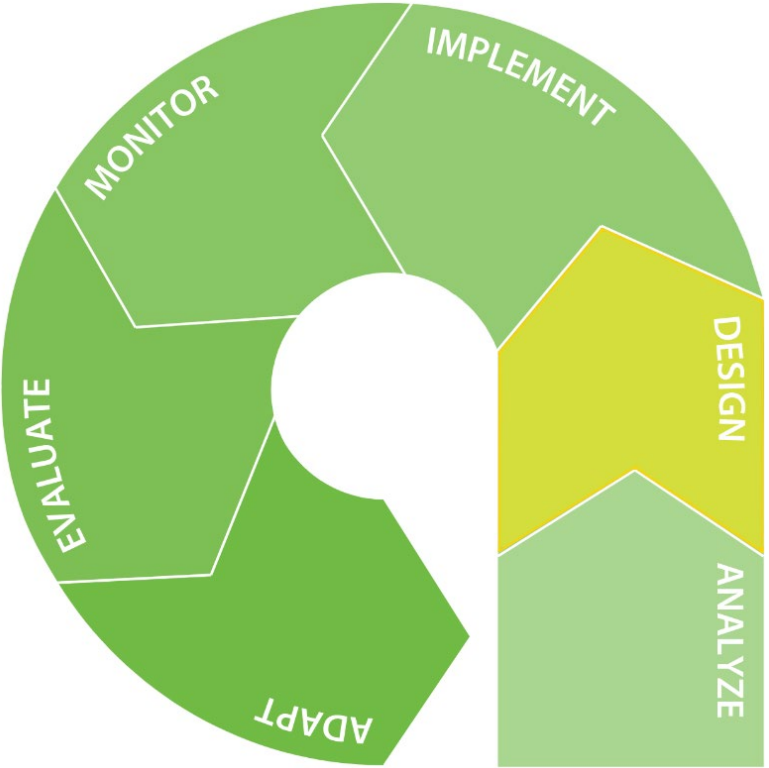
Evidence Based Design for Greening

Evidence Based Design



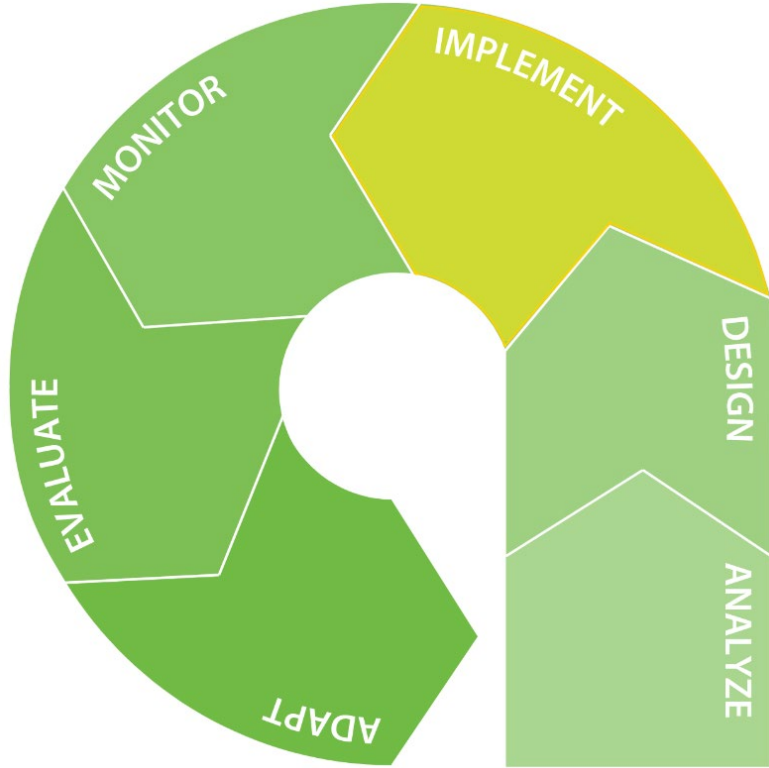
Analyze where pollution is the worst

Evidence Based Design



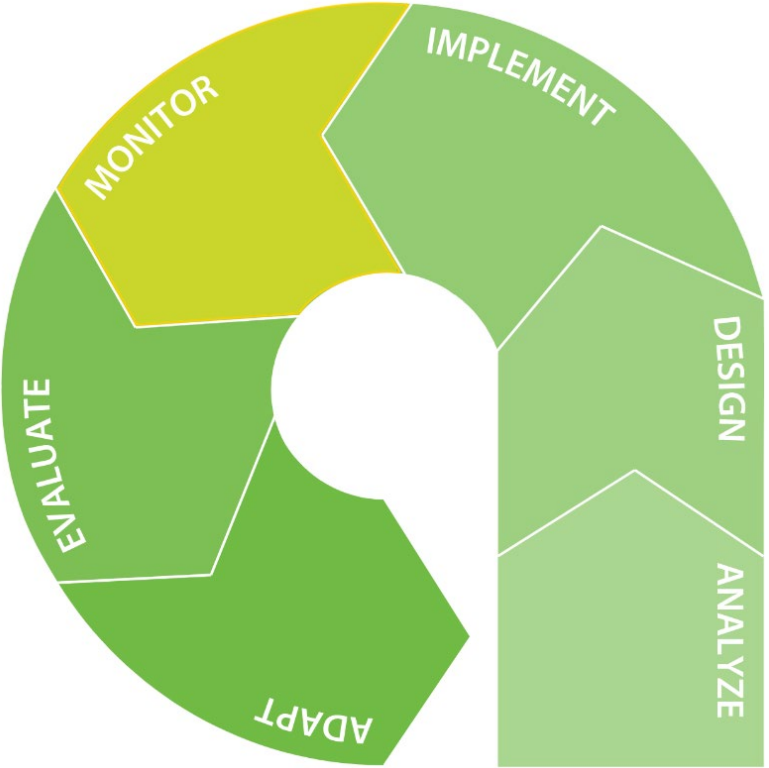
Design an intervention

Evidence Based Design



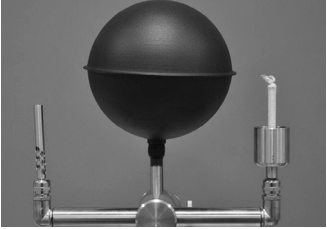
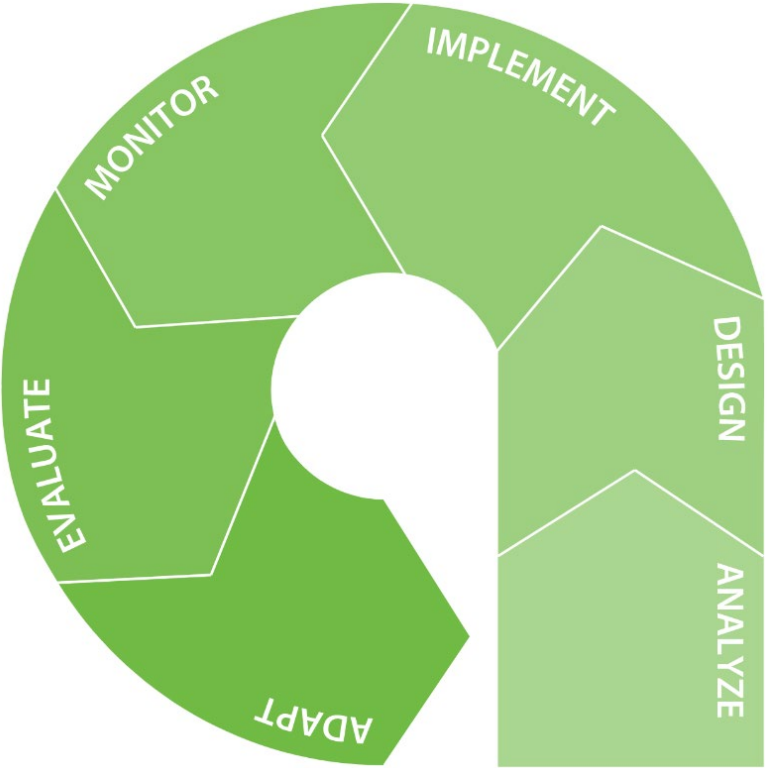
Implement/Install the design

Evidence Based Design

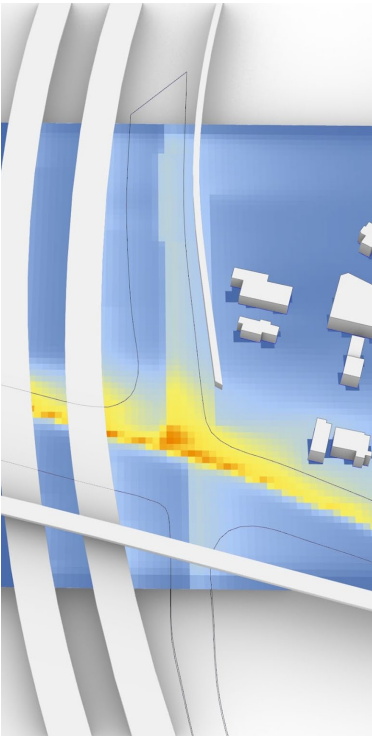


Monitor the results

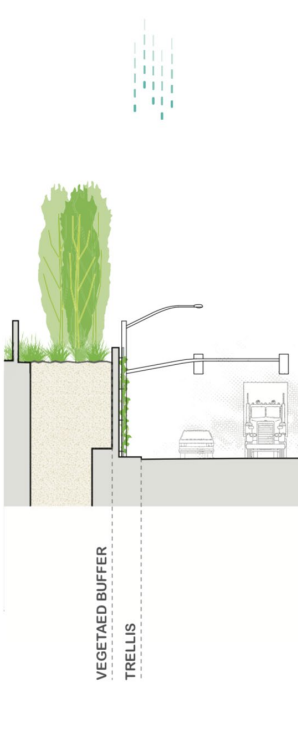
Evidence Based Design



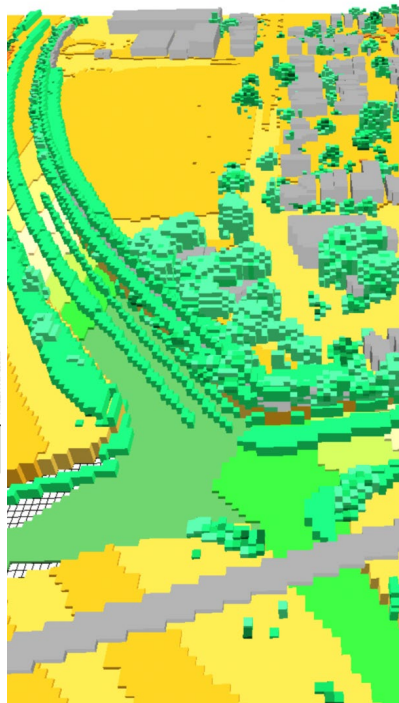
Prescott Greening Project



Model
Pollution



Design



Model
Solutions



Build
Interventions



Monitor
Results