



SOUTH CENTRAL FRESNO AB 617 COMMUNITY TRUCK REROUTE STUDY

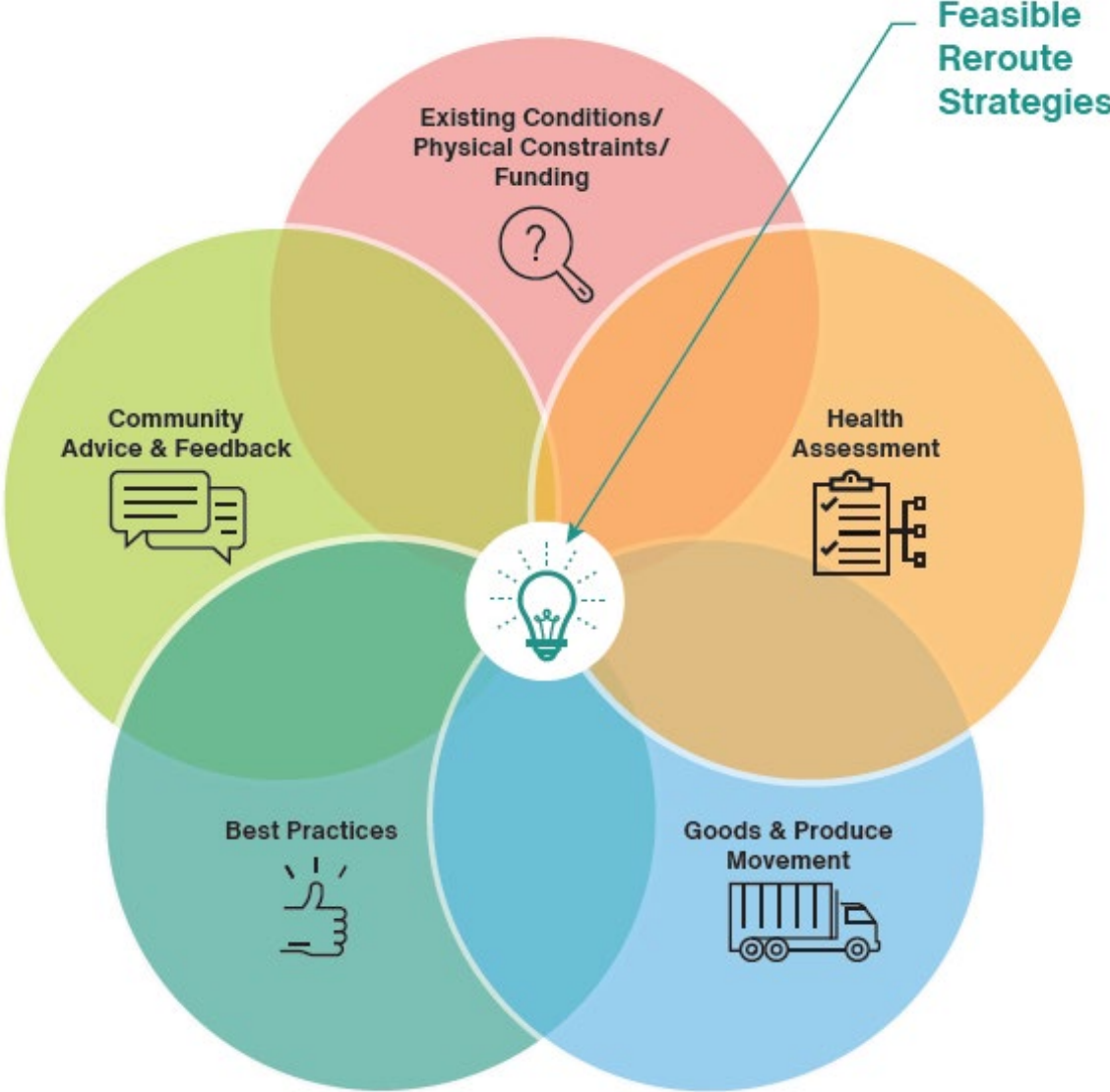
COMMUNITY STEERING COMMITTEE (CSC) MEETING

PRESENTED BY CITY OF FRESNO
JUNE 12, 2024



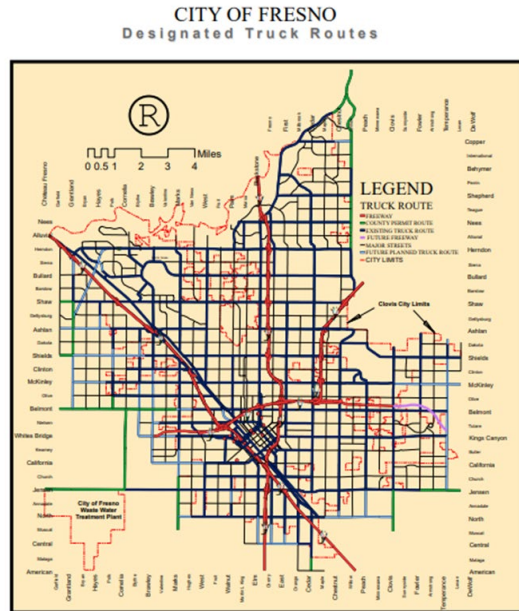
ANALYSIS

Key Considerations for Feasible Reroute Strategies

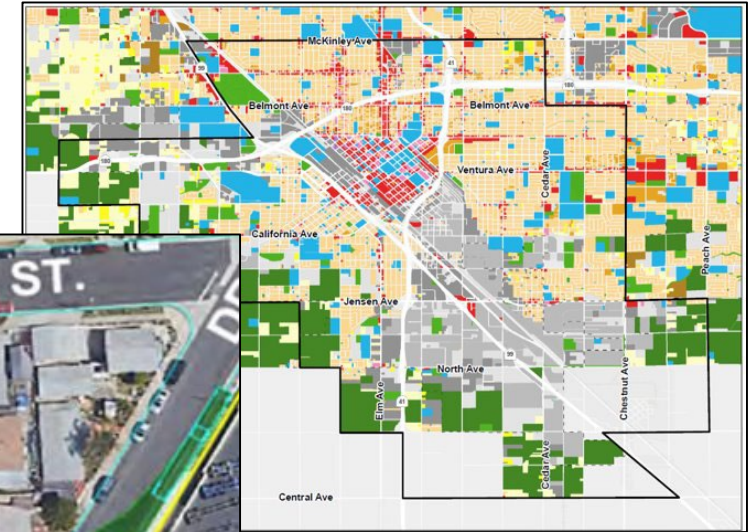
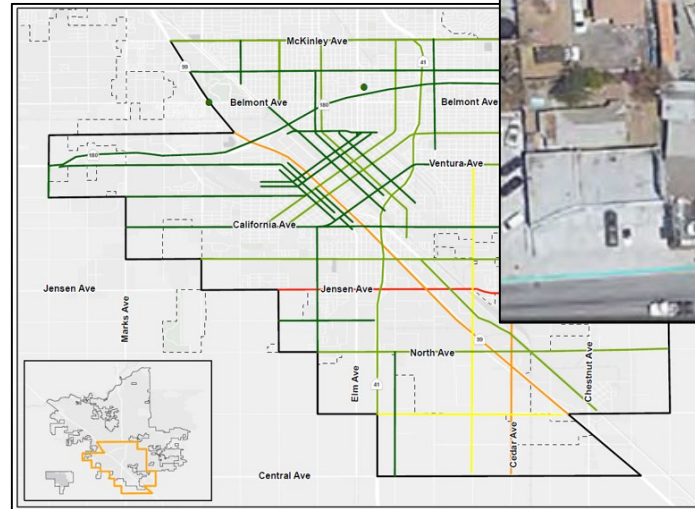


Analysis

- Outreach Plan
- Existing Conditions Analysis Report
- Best Practices Report



Note: Commercial vehicles exceeding twelve thousand (12,000) pounds maximum gross weight are restricted to designated truck routes. Certain exceptions may be permitted pursuant to California Vehicle Code sec. 30761 and Fresno Municipal Code Section 16-1393. Call 559-421-6683 or 559-621-6900 for additional information.
Effective September 25, 2005





OUTREACH PROCESS

Outreach Summary


- **January 2023:** Community Recruitment for CAG
- **March 2023:** Stakeholder Interviews (Virtual and In-Person)
- **March 2023:** Existing Conditions Survey
- **September 2023:** Pop-Up at Fiestas Patrias in Downtown
- **October 2023:** Pop-Up at Trunk or Treat at Maxie L. Parks Community Center
- **December 2023:** Strategy Implementation Survey
- **January 2023:** Malaga Community Meeting
- **May 2023:** Three (3) Community Meeting (Virtual and In-Person)



Feedback

- Pedestrian and Bicyclist Safety Issues
- Truck behavior Issues
- Roadway Infrastructure
- Community Input
- Health Assessment informing the Truck Study
- Concerns around Orange Elementary
- Online Accessibility
- Truck Routes through neighborhood



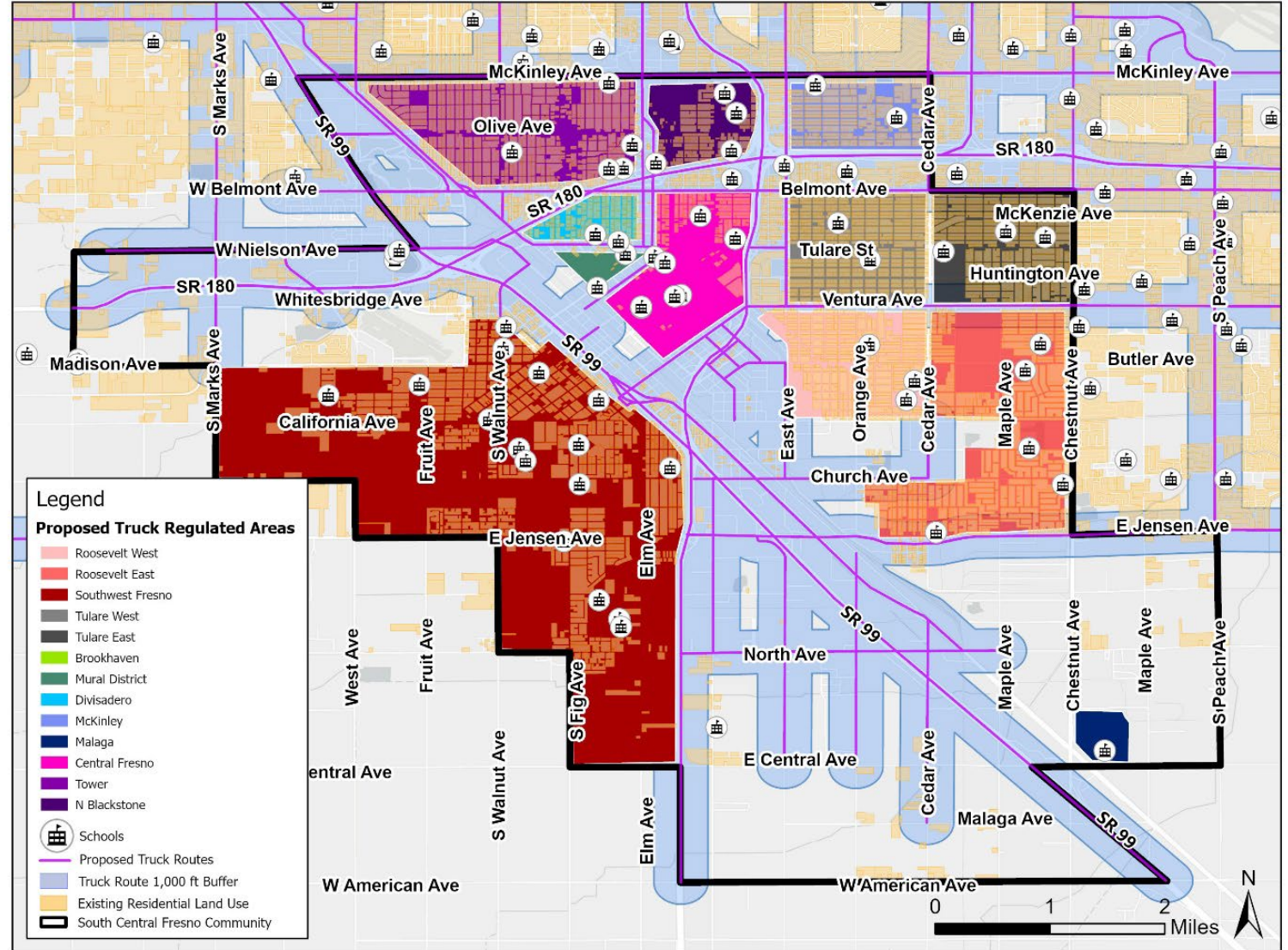


DRAFT ROUTING AND IMPLEMENTATION STRATEGIES REPORT

Truck Routes

Proposed Truck Regulated Areas and 1,000 ft buffers:

- Sensitive receptors include both residential areas and schools
- Key factor based on recommendations from the UC Merced Health Assessment



Strategies

- **Strategies Toolkit**
 - 238 strategies listed and mapped
 - Truck-focused signage, truck regulated areas, sidewalks, improved crosswalks, traffic calming, bike lanes, and more.
- **Non-Infrastructure Strategies**
 - Education & Outreach, Zero-Emission Trucks, Truck-specific GPS Administration, and more.
- **Implementation**
 - Policy
 - Funding
 - Prioritization



SOUTH CENTRAL FRESNO AB617 COMMUNITY HEALTH ASSESSMENT

CONDUCTED BY:

SANDIE HA, PHD, MPH

DEPARTMENT OF PUBLIC HEALTH

UNIVERSITY OF CALIFORNIA, MERCED



**COMMUNITY
AND LABOR CENTER**
at the University of California, Merced

Executive Summary

Acknowledges

- Fresno County has some of the nation's greatest environments
- Air pollutants, including fine particles and ozone, have been linked to health outcomes across the lifespan

Health Assessment – Two Main Components

- City-Wide Assessment
- South Fresno Community Survey



FRESNO COMMUNITY ENVIRONMENTAL HEALTH IMPACT ASSESSMENT

APRIL 2024

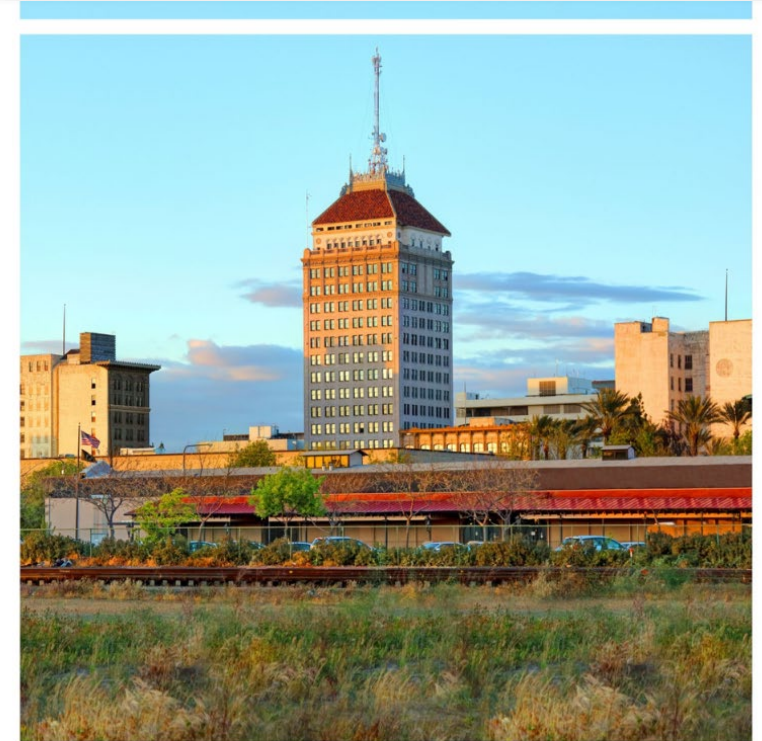
COMMUNITY AND
LABOR CENTER

UC MERCED

UNIVERSITY OF CALIFORNIA, MERCED

Objectives

1. *Determine the impacts of proximity to major road and truck routes on risks of preterm birth and infant mortality in the City of Fresno from 2009 to 2019*
2. *Determine the impacts of air pollution exposures on risks of preterm birth, infant mortality, childhood asthma, and adult cardiovascular diseases in the City of Fresno from 2011 to 2020*
3. *Estimate the excess number of preterm births, infant mortality, asthma, and cardiovascular disease cases that were potentially attributed to air pollution exposures*
4. *Conduct a community-based survey to further understand environmental concerns in South Central Fresno, an area identified by the State under AB 617 to be disproportionately affected by pollution*



FRESNO COMMUNITY ENVIRONMENTAL HEALTH IMPACT ASSESSMENT

APRIL 2024

COMMUNITY AND
LABOR CENTER

UC MERCED

UNIVERSITY OF CALIFORNIA, MERCED

City-Wide Assessment

Key Findings

- South Fresno residents were, on average, more likely to live closer to a major street, truck route, or freeway.
- Exposures to air pollutants such as fine particles <2.5 microns (PM2.5), ozone, and diesel, were associated with higher risk of the following: preterm birth, infant mortality, and emergency room visits or hospitalization due to asthma, or diseases related to the blood vessels of the heart and brain (e.g. heart attack, stroke, etc.).
- Pregnant people who lived within 1,000 feet of a freeway, 1,000 feet of a truck route, or 300 feet of a major road had significantly higher risk of adverse pregnancy outcomes, including preterm birth and infant mortality.
- Preterm birth, infant mortality, and asthma rates were higher among residents in the South Fresno community boundaries compared to the rest of the city.
- Even at the same level of exposure, residents within the South Fresno community boundaries and communities of color experienced higher health risks.
- The effects of PM2.5 were stronger in the cold season (November-April) whereas the effects of ozone were stronger in the warm season (May-October)

Community Health Survey

GOAL: understand residents' health and experience related to environmental issues in the region

Representative Sample: 1766

Key Findings:

- High level of environmental health concern related to road conditions, pollution, and climate change
- Support local efforts to direct trucks away from local residential areas
- Almost half of the residents surveyed (43%) reported having at least one chronic health condition
- About a quarter of reproductive-aged women reported having experienced an adverse pregnancy outcome such as miscarriage, stillbirth, infant death, or birth defects
- Residents who lived within 1,000 feet of a truck route, freeway, or major road had a higher prevalence of chronic health conditions and adverse pregnancy outcomes



Key Recommendations

- 1,000 ft. buffer from residential areas
- Consider a more conservative buffer, given that residents within the South Fresno AB617 community, and communities of color, bear higher health risks for the same exposures to pollution
- Preterm birth, infant mortality, and asthma rates were higher among residents within AB617 compared to those outside the boundary
- Implement season-specific strategies to mitigate truck emissions. The summer presented the greatest risk for exposure to ozone, while the winter presented the greatest risk for exposure to PM2.5 particles.
- The use of zero-emission commercial trucks is also recommended to reduce population exposures to air pollution.



FRESNO COMMUNITY ENVIRONMENTAL HEALTH IMPACT ASSESSMENT

APRIL 2024

COMMUNITY AND
LABOR CENTER

UC MERCED

UNIVERSITY OF CALIFORNIA, MERCED



NEXT STEPS

Next Steps

- ✓ Revise the draft *Truck Routing and Implementations Strategies Report*
- ✓ Finalize Report and present to City Council: Summer 2024



THANK YOU!