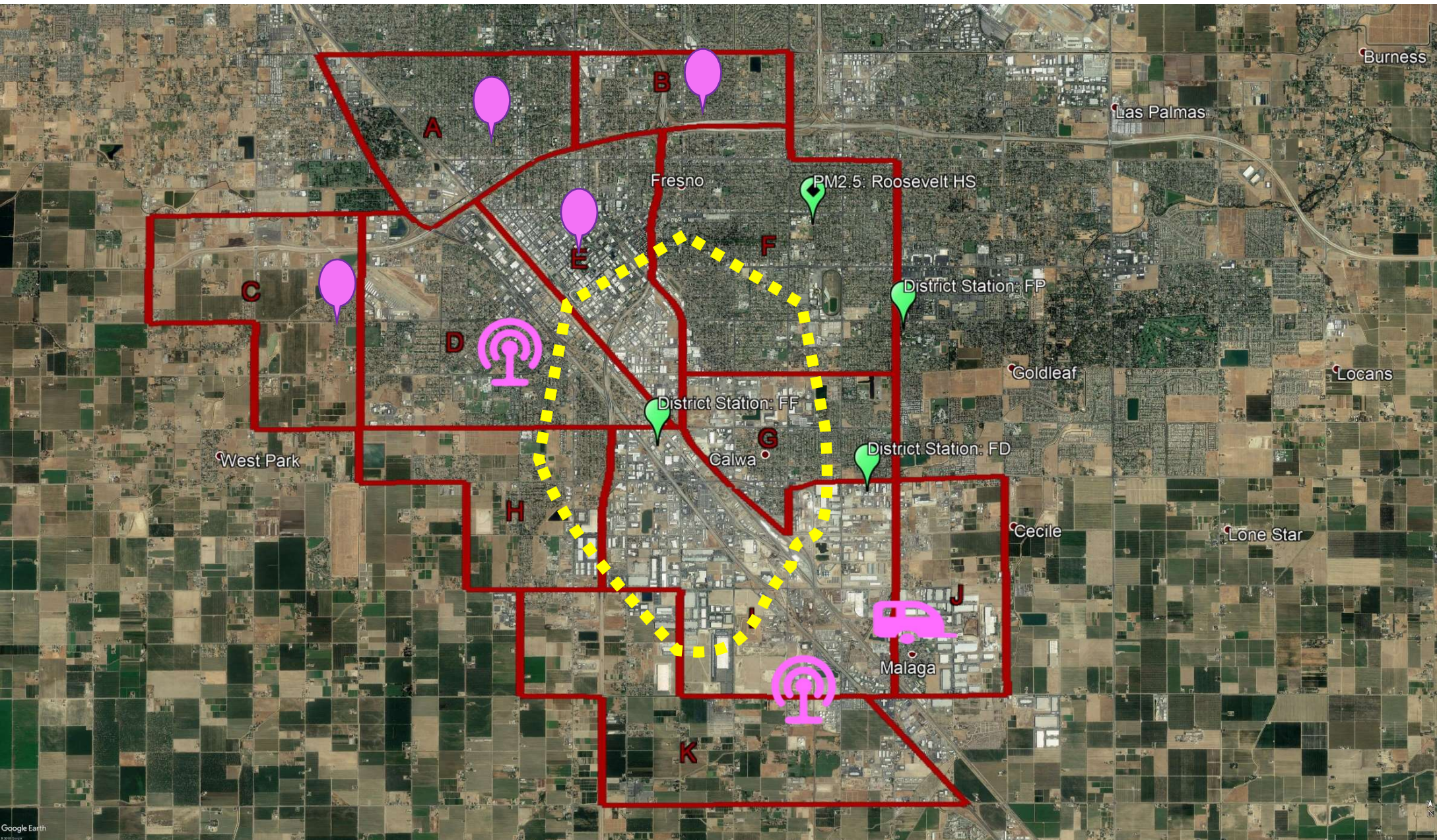







# Platform Capabilities for Initial Community Air Monitoring Network

Pollutants	Example Sources	Platform			
		Trailer (x1)	Van (x1)	Compact System (x2)	Stand Alone PM2.5 (x4)
PM2.5	Mobile, industry, residential	x	x	x	x
Black Carbon	Mobile, industry, residential	x	x	x	
NO, NO2, NOx	Mobile, industry	x	x	x	
CO	Mobile	x	x	x	
Ozone	Regional, formed from VOC and NOx	x	x	x	
SO2, H2S	Industry	x	x	x	
VOC (BTEX)	Gasoline distribution and marketing	x	x	x	
VOC Auto GC/MS	Industry, mobile	x			
Toxics	Industry, mobile	x	x		
Meteorology		x	x	x	

# Recommended Locations of Current Resources



-  Stand-Alone PM2.5
-  Compact Air Monitoring System
-  Trailer

-  **Mobile Monitoring Van**
  - Drive on a regular schedule throughout entire boundary all year
  - Respond to community concerns
-  - Recommended focus route