

Update on Arvin/Lamont Community Air Monitoring

Arvin/Lamont CSC Meeting
January 28, 2026

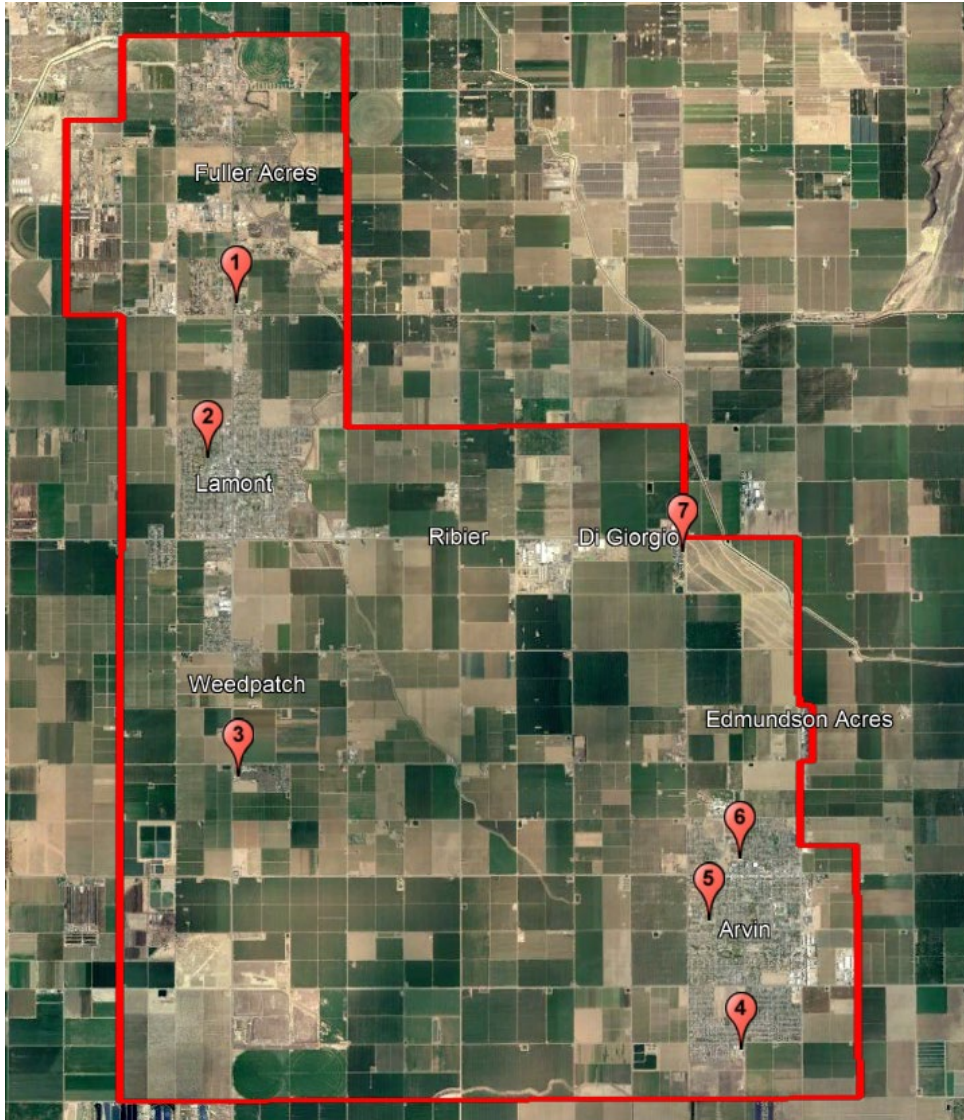
Air Monitoring Update

Status of Community Air Monitoring Plan
Implementation

Review Air Monitoring Data Collected

Questions and Comments

CAMP Implementation Status



#	Location	Monitoring	Done
1	Mountain View Middle School	PM2.5, BTEX, H2S, SO2	Yes
2	Alicante Elementary	PM2.5, BTEX, H2S, SO2, NOx, Black Carbon	In progress
3	Sunset Middle School	PM2.5	Yes
4	El Camino Real Elementary School	PM2.5	Yes
5	Bear Mountain Elementary School	PM2.5	Yes
6	Arvin Community Services District	PM2.5, H2S, SO2, NOx, Ozone, CO, Black Carbon, Toxics	Yes
7	Di Giorgio & Comanche	PM2.5	In progress

Community Air Monitoring Platforms



Community Air Monitoring Platforms (cont'd)



Ongoing Community Air Monitoring

- District is continuing localized air monitoring within the community boundary
- District is identifying an appropriate location to deploy PM2.5 monitor near Di Giorgio and Comanche Drive
- Coordinating with the Lamont School District to deploy an air monitor at Alicante Elementary School
 - Work is underway to address electrical infrastructure needs and finalize equipment placement
- Lab analysis of air samples for PM2.5 and VOC speciation being conducted at the Arvin CSD trailer site

Air Monitoring Update Summary

Annual average PM2.5 in 2025 is lower at all monitoring sites compared to 2024

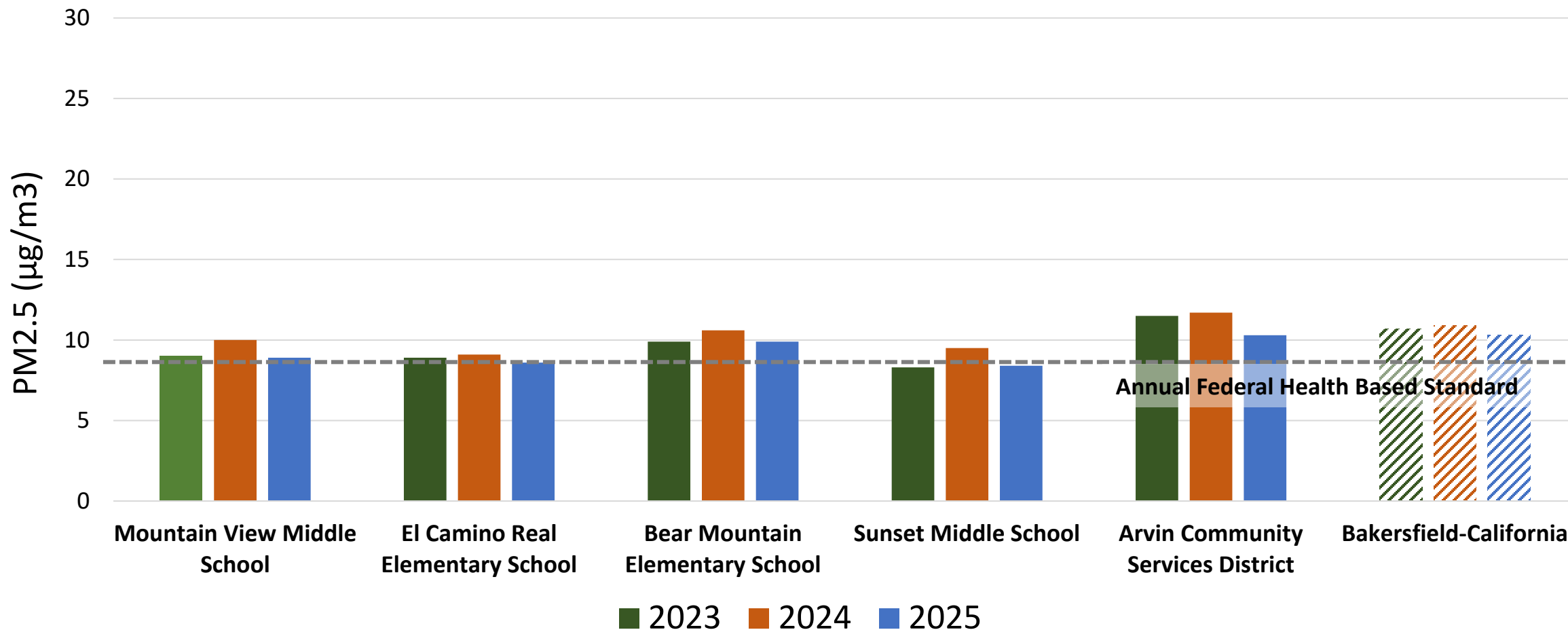
Fourth-Quarter PM2.5 slightly lower in 2024

Wind and periods of stagnation contributed to elevated PM2.5 this quarter

Air monitoring data available online at your community portal

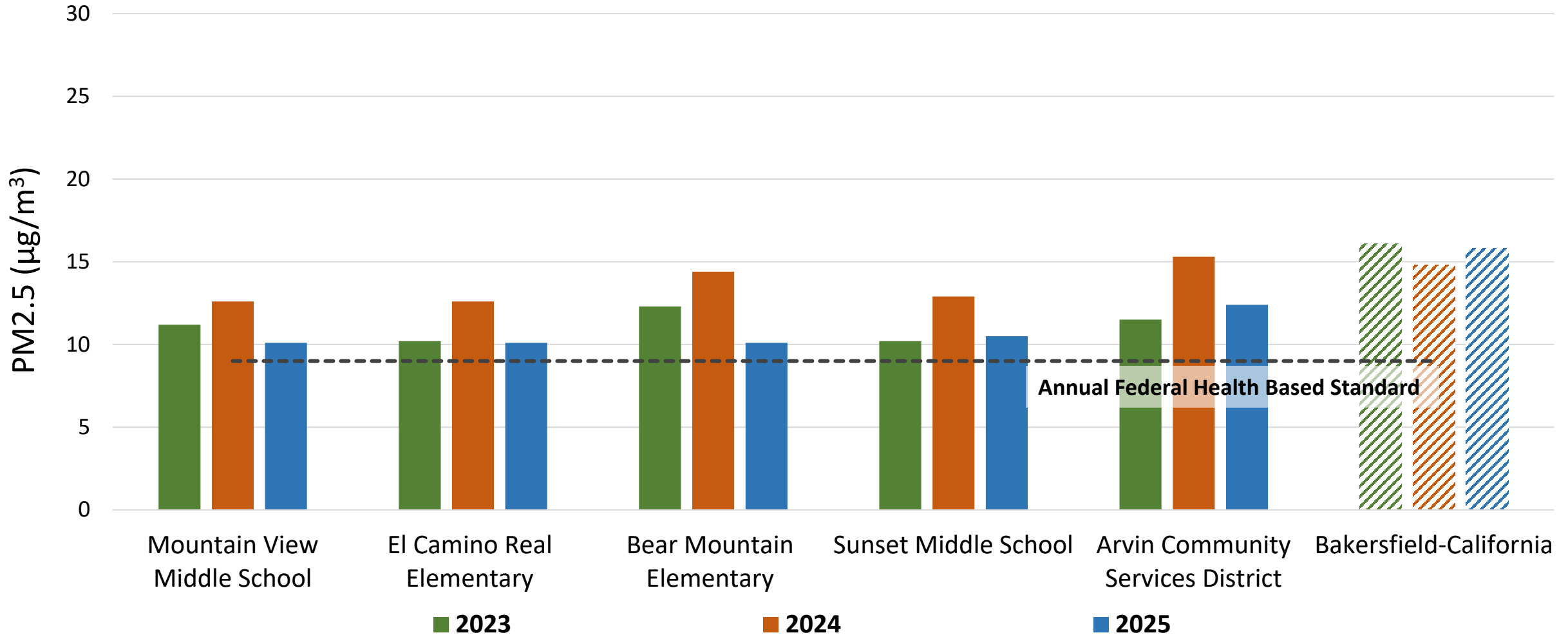
PM2.5 Annual Average Comparison

2025 PM2.5 annual levels are lower than the prior year



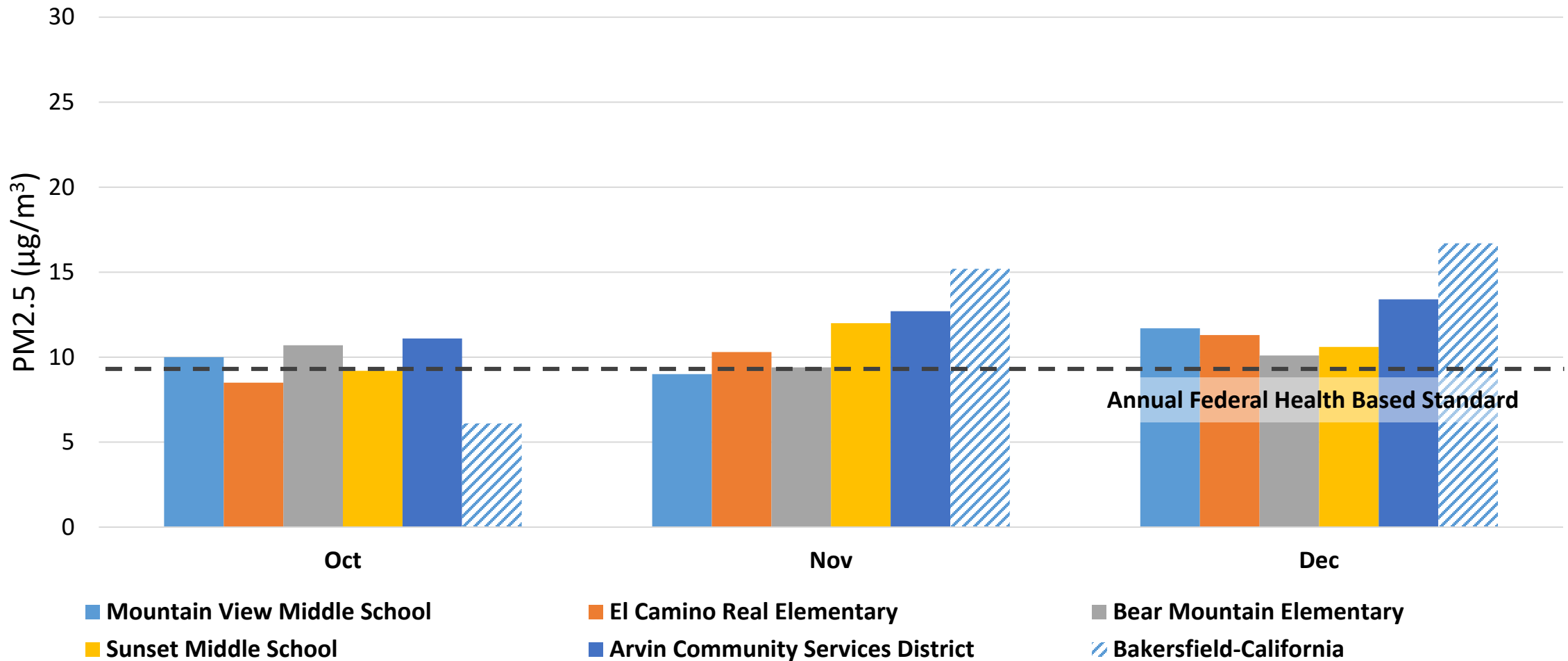
PM2.5 Quarterly Average Comparison

2025 Q4 PM2.5 lower than 2024



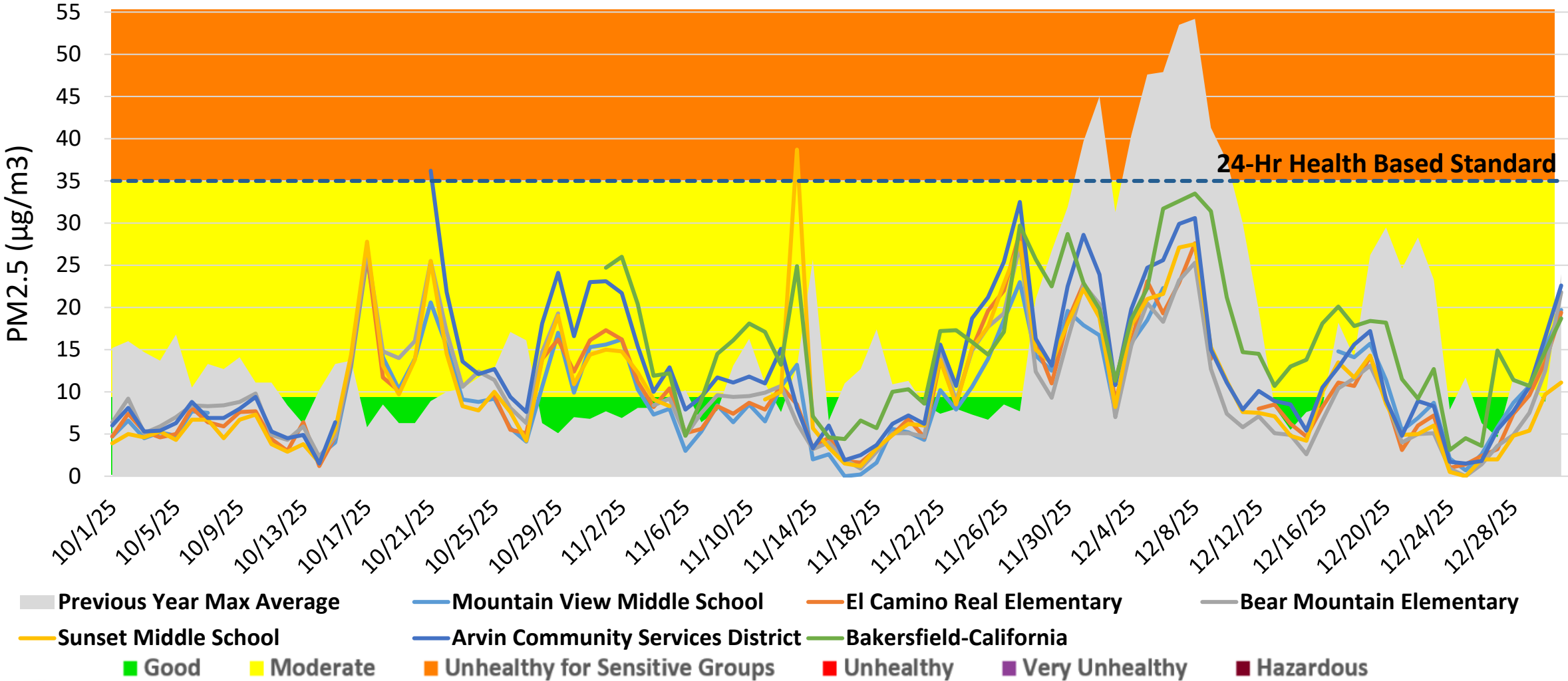
Monthly Average PM2.5 Comparison

PM2.5 concentrations tend to increase in the later winter months

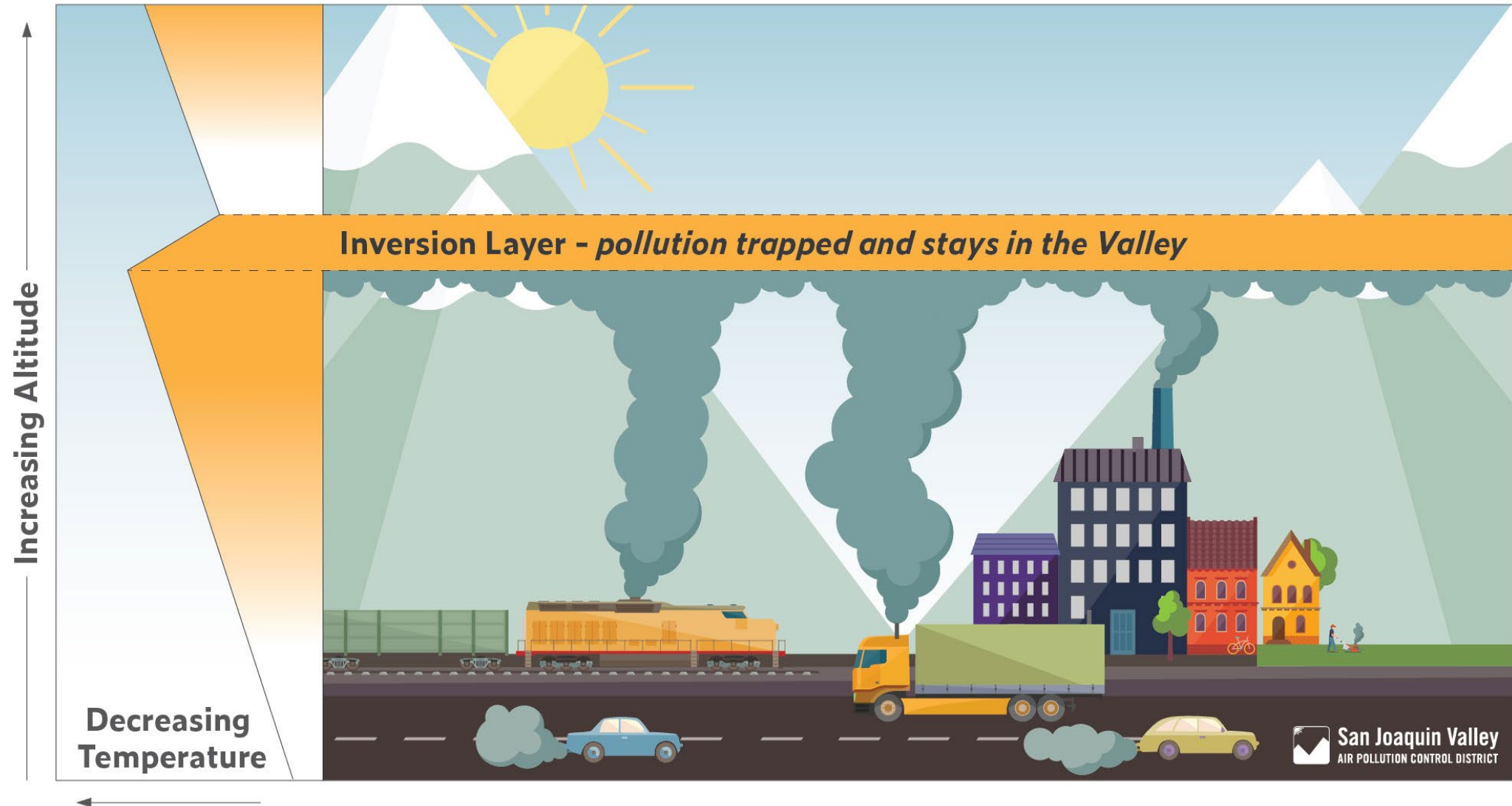


PM2.5 Daily Averages

Stagnation and wind contributed to increased PM2.5



What causes PM2.5 levels to be higher in the winter?



Stagnant Conditions in the Winter




99 at Route 223



Tule Fog remained over the Central Valley for over 3 weeks between November and December 2025

Communicating Air Quality Episodes



News Release

For immediate release 12/23/2025

Attn: Local news, weather, health and assignment editors


Media Contact
Jaime Holt (559) 309-3336

Spanish-language Contact
Ana Stone (559) 314-5713

Gusty winds prompt Air Quality Advisory

Gusty wind and blowing dust pose potential health concern in south Valley

Strong southeasterly winds are blowing in the southern portion of the Valley today ahead of a storm system expected to bring rain to the Valley late tonight and into the week. Winds are anticipated to persist through the night, with blowing dust and increased PM10 concentrations possible in certain areas across the southern part of the San Joaquin Valley including Bakersfield. Consequently, the District has issued an Air Quality Advisory for the southern San Joaquin Valley, including Kings, Tulare, and Kern counties. Residents in affected areas are advised to remain indoors to minimize exposure to particulate matter (PM) emissions.

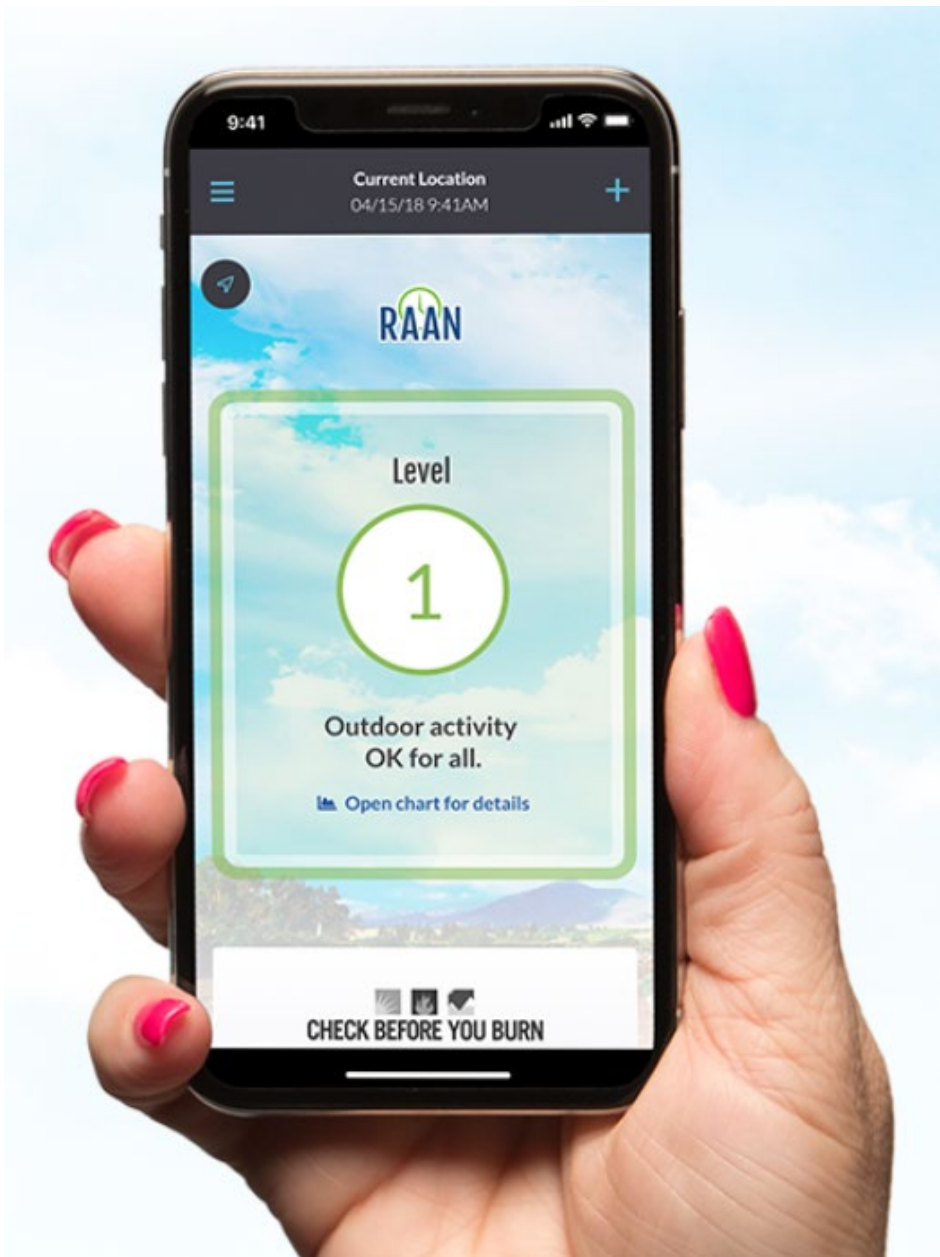


STAGNATION AIR QUALITY TIPS

- Reduce time spent outdoors
- Take health-protective steps indoors:
 - Use portable air cleaners
 - Plan ahead and create a clean air space
- Check air quality conditions
- Choose not to burn
- Follow the instructions of your primary health provider if you are experiencing health issues

valleyairdistrict We are in the midst of a classic Valley "tight-lid" winter weather pattern, which can cause pollution to build up quickly. Please avoid wood burning, as it adds to... more

December 11, 2025



How to File an Air Pollution Complaint

Complaints may be filed online, by phone, or by using the Valley Air app on your smart phone

- Complaints are responded to 365 days a year
- Your information is confidential
- Filing a complaint will put you in touch with an Air Quality Inspector assigned to the complaint

Tulare, Valley portion of Kern

[\(800\) 926-5550](tel:(800)926-5550)

valleyair.org/complaints

Comments/Questions?