

# Assembly Bill 617

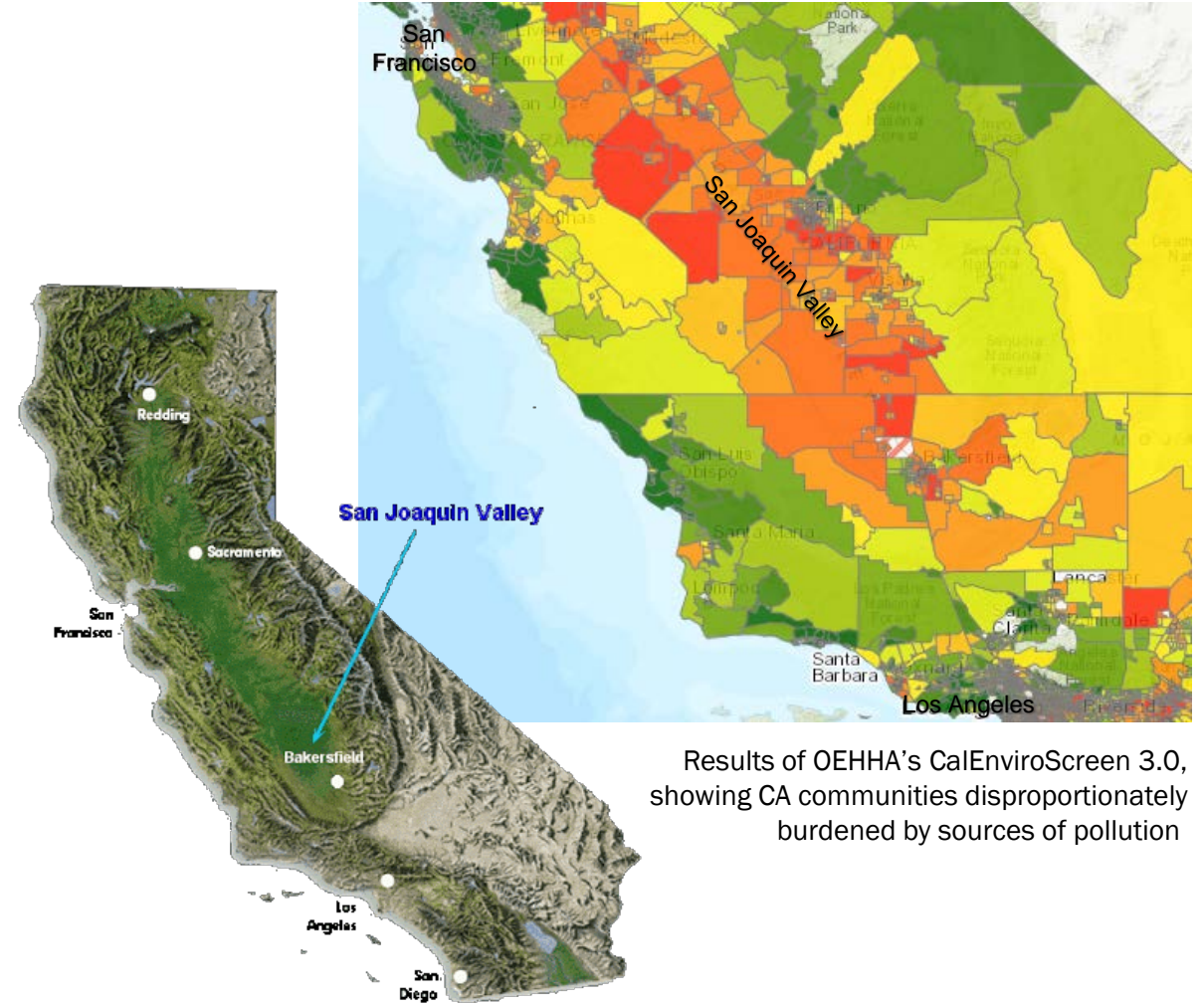
## Community Outreach Webinar

October 12, 2021

San Joaquin Valley Air Pollution Control District

# Valley's Air Quality Challenges

- Valley faces a variety of challenges in meeting federal air quality standards:
  - Unique combination of topography & meteorology
  - Major goods movement corridor
  - High population growth
  - Pollution transport from other areas
  - Climate change and wildfires
- 20 of 30 most disadvantaged California communities located within the San Joaquin Valley



Source: OEHA, San Joaquin Valley Geology

# Agency Roles

## Federal



### US EPA

Regulates stationary, area, and mobile sources including interstate transportation



Trains



Ships



Planes

## State



### CARB

Regulates mobile and area sources of air pollution



Cars



Trucks



Buses

## Local

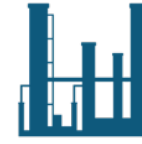


### Local Air Districts

Regulates stationary and area sources of air pollution



Factories



Refineries

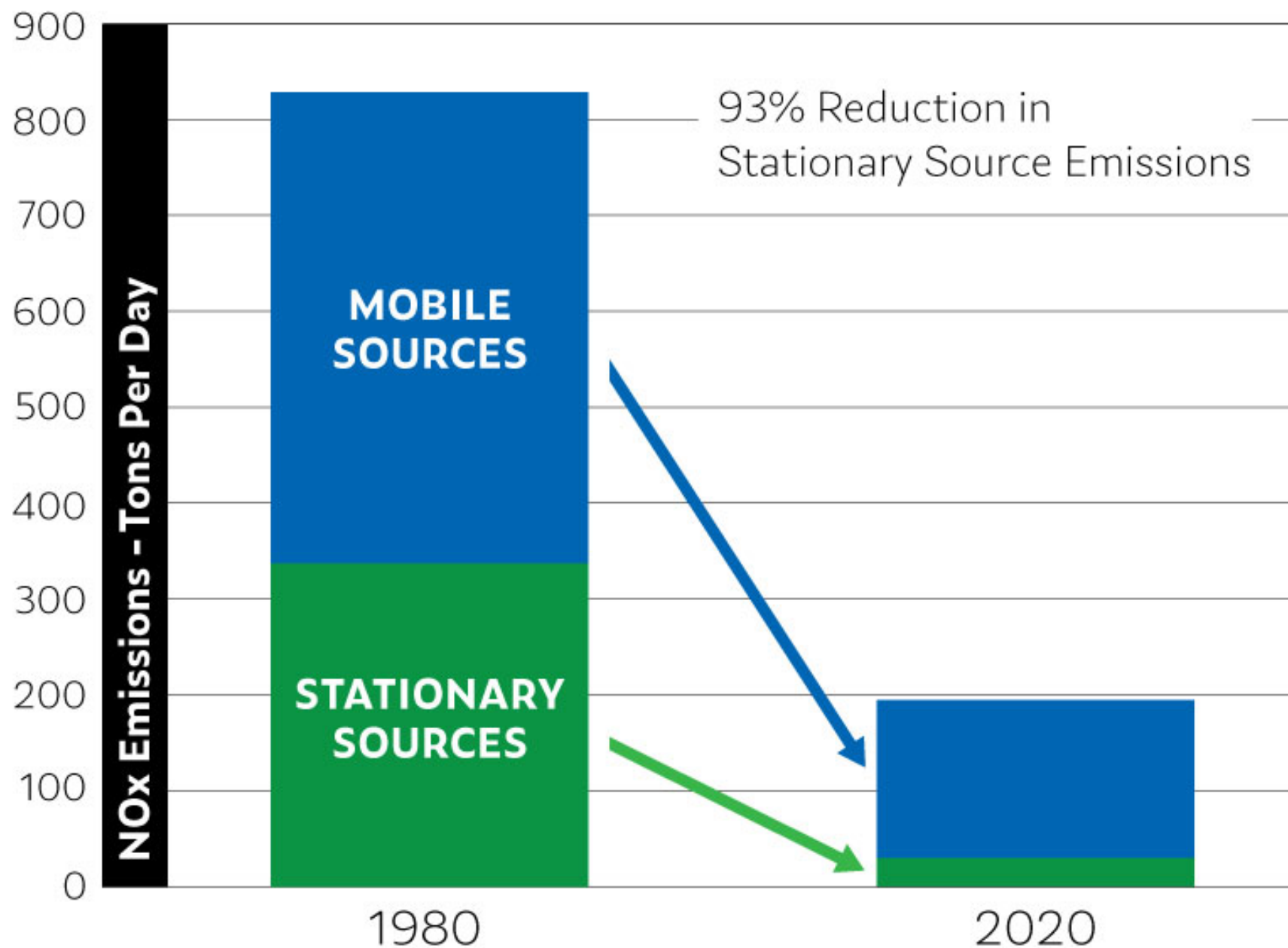


Residential woodstoves

Source: CARB

# Clean Air Efforts in the San Joaquin Valley

- Toughest regulations on business, industry, farms and dairies, cars and trucks, consumer products and wood burning
- Reduction of risk from existing and new stationary sources through District's permitting and air toxics hot spots programs
- Over \$3.8 billion dollars of public/private investment on incentive-based emissions reductions (200,000 tons of reduced emissions)
- Continued efforts at identify additional emission reductions necessary to meet clean air and public health goals



# Importance of AB 617 Program

- Passed by state legislature in 2017, developed statewide program to reduce exposure to toxics and criteria pollutants in environmental justice (EJ) communities
- Communities, air districts and CARB work together to develop and implement:
  - Community Air Monitoring Plans (CAMPs)
  - Community Emissions Reduction Programs (CERPs)
- Additional statewide provisions for certain industrial facilities and enhanced emissions reporting, and funding for clean technology investments

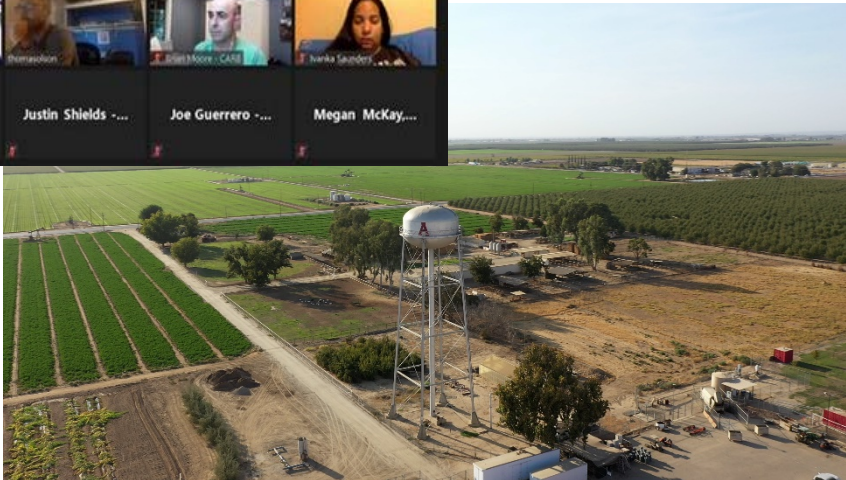




# Community-Focused, Community-Driven

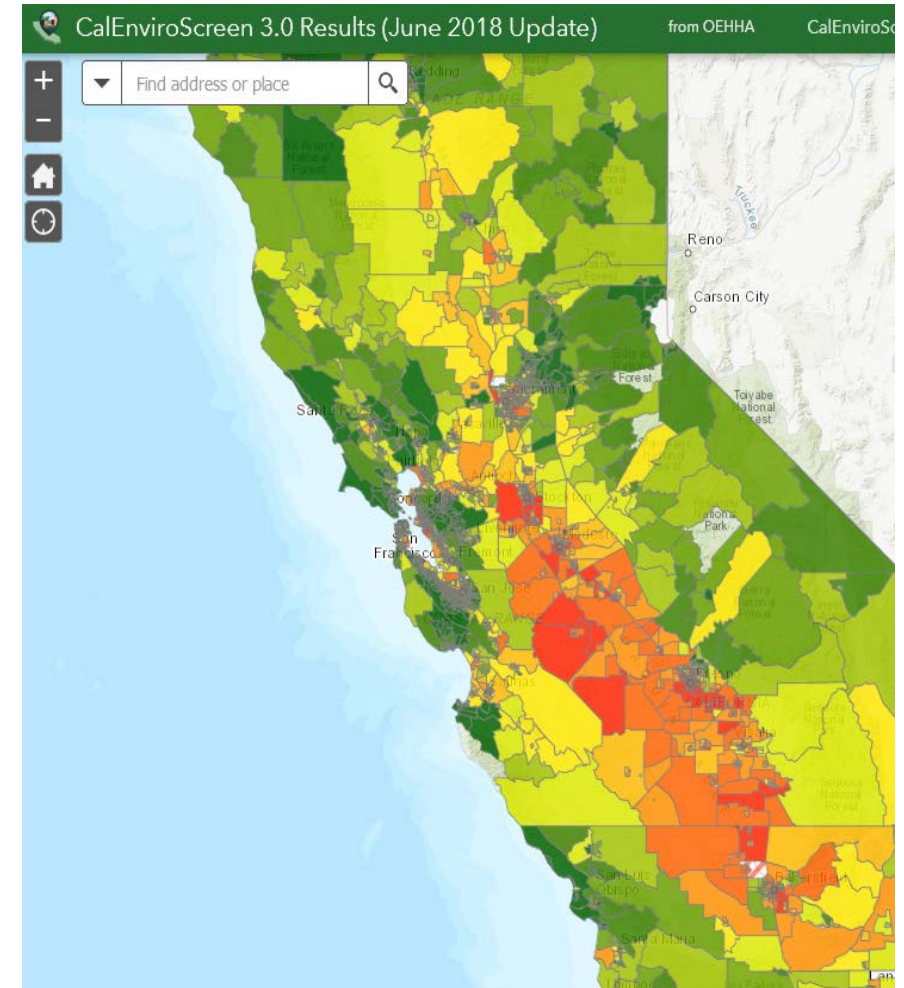


- Focus on communities most impacted by air pollution
  - People of color, lower socioeconomic status throughout state can experience disproportionate impacts from air pollution in their communities
- Through AB 617, community members play integral role in design of planning process and implementing actions to reduce or mitigate emissions
  - Center on equity and environmental justice



# State's Community Identification and Selection Process

- CARB responsible for annually reviewing and selecting communities under AB 617
- Based on public process, multiple principles for community prioritization:
  - Identify disadvantaged communities (Statewide CalEnviroScreen scores)
  - Equitable distribution of AB 617 efforts across diverse community types (urban and rural)
  - Community support through self-nominations to CARB and District



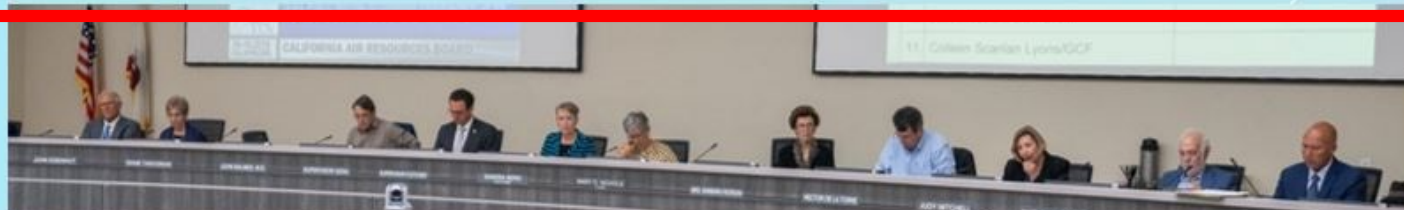


# Valley AB 617 Implementation Progress

- **Year 1 Communities:** South Central Fresno and Shafter
  - CSCs established and community emissions reductions and monitoring underway
- **Year 2 Community:** Stockton
  - CSC established and community emissions reductions and monitoring underway
- **Year 3 Community:** Arvin-Lamont
  - CSC and community boundary established, emission reduction programs and monitoring in development

# State AB 617 Community Selection Methodology

Year	Año	2018	2019	2020	2021
Factors -Exposure to air pollution -Sensitive populations -Other measures of vulnerability	Factores -Exposición a la contaminación del aire -Poblaciones sensibles -Otras medidas de vulnerabilidad	X	X	X	X
Regional diversity and sources	Diversidad regional y fuentes	X	X	X	X
Prioritize monitoring communities	Priorizar las comunidades de monitoreo		X	X	X
Consideration of resources available, and existing community needs	Considerar los recursos disponibles y las necesidades existentes de la comunidad		X	X	X
Develop a list of strongly supported communities	Desarrollar una lista de comunidades fuertemente apoyadas			X	X
Focus on actions for all communities	Enfoque en acciones para todas las comunidades				X





# Communities Strongly Supported Through CARB's Community Selection Process

## EXISTING MONITORING COMMUNITIES/COMUNIDADES DE MONITOREO EXISTENTES

- South Sacramento – Florin (Sacramento)

## CONTINUALLY SUPPORTED COMMUNITIES\*/COMUNIDADES CONTINUAMENTE APOYADAS\*

- East Contra Costa County (Bay Area)
- East Oakland (Bay Area)
- Eastern San Francisco (Bay Area)
- San Jose (Bay Area)
- Tri-Valley (Bay Area)
- Vallejo (Bay Area)
- Northern Imperial County Corridor-  
Bombay Beach, Brawley, Calipatria,  
Desert Shores, Niland, Salton City,  
Salton Sea Beach, Salton Sea, Seeley,  
Westmorland (Imperial)
- South Natomas (Sacramento)
- Norwood, Old North Sacramento, Del Paso Heights (Sacramento)
- San Diego Border Community/ Comunidad fronteriza de San Diego - Otay Mesa, San Ysidro (**San Diego**)
- La Vina (San Joaquin)
- Madera (San Joaquin)
- Maywood, Commerce (east), Vernon, Bell (South Coast)
- Pacoima, North Hollywood, Sun Valley, San Fernando (South Coast)

\*Communities with strong support from air districts and communities to be recommended for selection in upcoming years.

\*Comunidades con un fuerte apoyo de distritos de aire y de comunidades que serán recomendadas para la selección en los próximos años.



# CARB's Community Selection Process



*Source: CARB*

For more information on CARB's community identification and selection process  
visit <https://ww2.arb.ca.gov/capp-selection>  
or email [communityair@arb.ca.gov](mailto:communityair@arb.ca.gov)



# AB 617 Community Selection Next Steps

- No formal recommendation for a Year 4 community selection in the Valley
  - Since 2017, no increase in annual implementation and incentive funds even with increased communities
  - Ongoing state supporting funds not guaranteed
- Consistent with CARB's direction, stronger focus in the coming year on broader capacity-building and support in disadvantaged communities

# Ongoing AB 617 Opportunities for 2021



# Next Steps for Community Engagement

To work with the District on ongoing community engagement, or to nominate your community for CARB's future AB 617 selection process, please contact the District or CARB

## Valley Air District

<http://community.valleyair.org/community-identification>

AB617@valleyair.org  
(559) 230-6000

## CARB

<https://ww2.arb.ca.gov/capp-selection>

communityair@arb.ca.gov

# Open Discussion

Raise your hand in webinar or email [AB617@valleyair.org](mailto:AB617@valleyair.org)

The host would like you to unmute

Stay Muted

Unmute

El anfitrión quiere que active el sonido

Permanecer  
en Silencio

Activar  
el Sonido