



# *SOUTH FRESNO* **CORRIDOR PROJECT**

California Department of Transportation  
Tuesday, December 14, 2021



# Why are we here?

- Present the purpose and need for the project
- Present the proposed project alternatives
- Answers questions regarding the project
- Discuss greenhouse gas reduction strategies



# Project Description

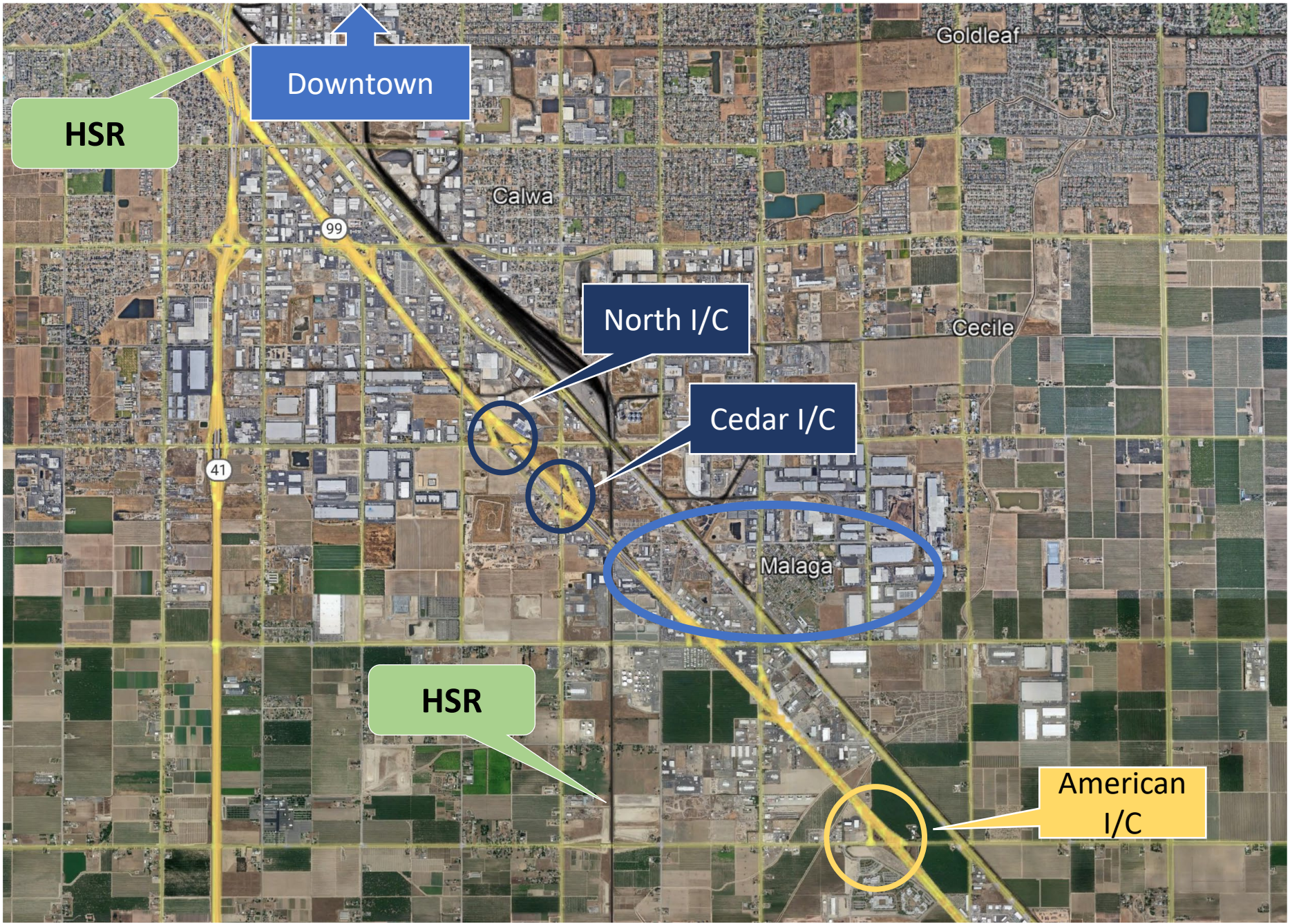
The project is located at the southern border of the City of Fresno in Fresno County on State Route 99 between post miles 12.5 and 19.1. There are two existing half-interchanges at either end of the project location, one at American Avenue and the other at North Avenue.

The project proposes to reconstruct the half-interchanges by expanding them to full interchanges and bringing them up to current Caltrans design standards. There are two build alternatives under consideration for the current half-interchanges at each location.





# Project Location





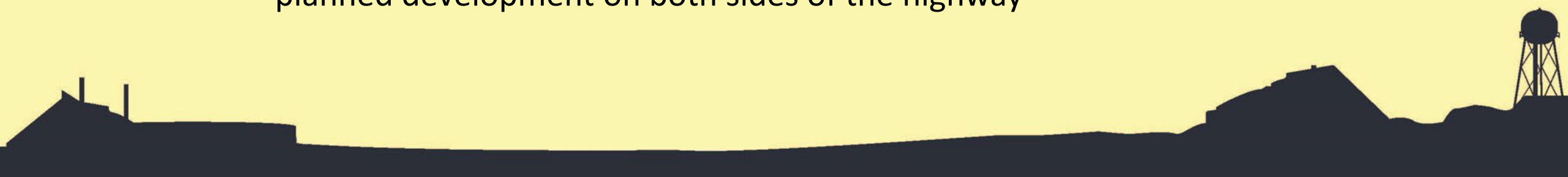
# Purpose and Need

## ***Purpose:***

- Reconstruct the existing half-interchanges at American and North Avenues to full interchanges
- Improve the traffic flow and operations

## ***Need:***

- Existing pavement highly deteriorated
- The on- and off-ramps are difficult for motorists to navigate and access
- Vehicles are forced to use local streets to reach their destinations
- Existing traffic demands in the project area will continue to increase due to planned development on both sides of the highway



# Project Alternatives

- There are four Build Alternatives and a No Build Alternative under consideration—two alternatives are proposed at American Avenue, and two alternatives are proposed at North Avenue
- The proposed alternatives offer different interchange configurations for American and North avenues
- Please see the Draft EIR/EA more detailed information



# No-Build Alternative

- The No-Build (No-Action) Alternative represents the current conditions of the half-interchanges at each location, and the conditions if no improvements are made in the future
- If selected, the No-Build Alternative would result in no improvements to roads or features for pedestrians and bicycles
- The interchanges would still lack the missing on- and off-ramps and driving conditions would further deteriorate

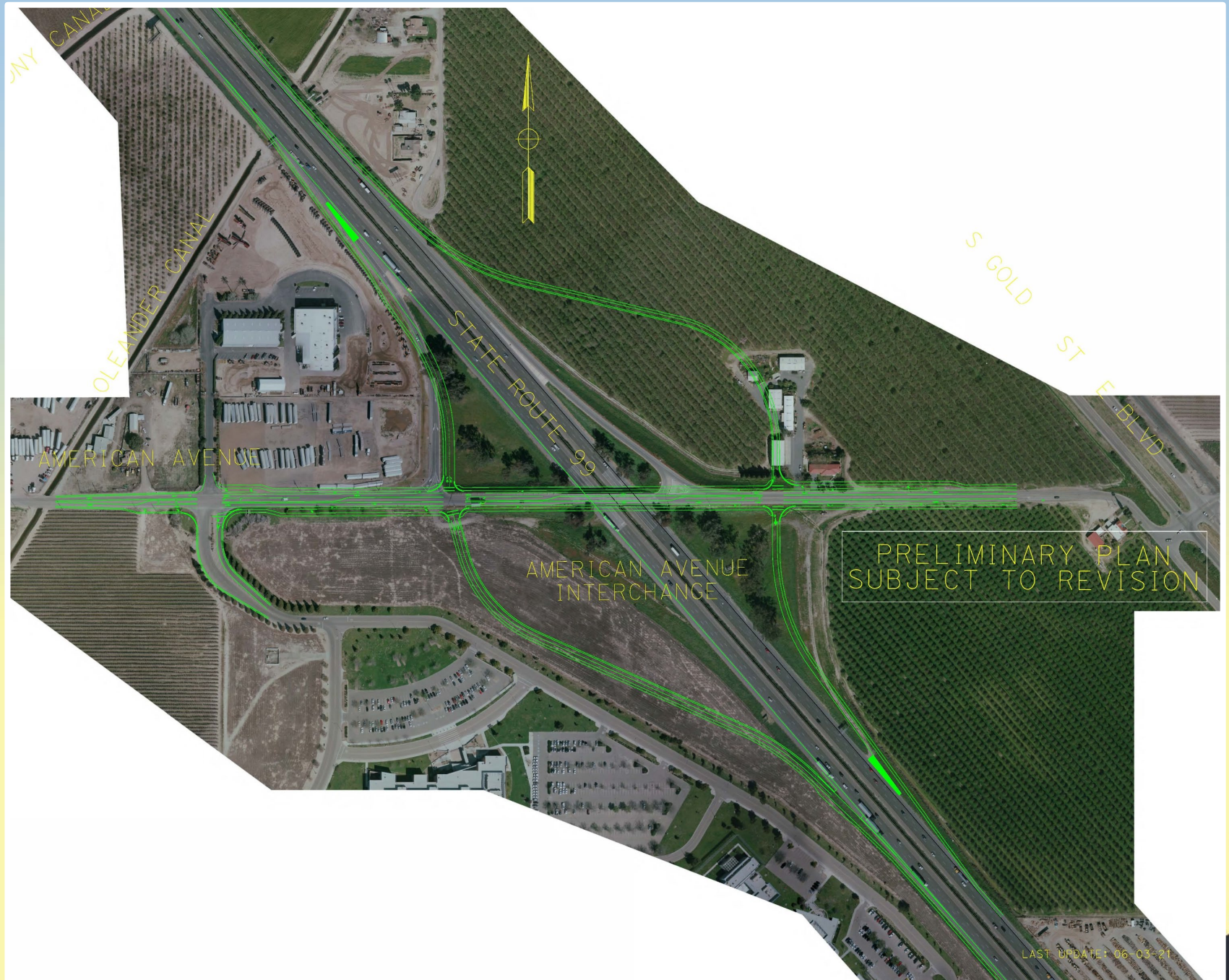


# Existing American Avenue





# Alternative 1 Spread Diamond





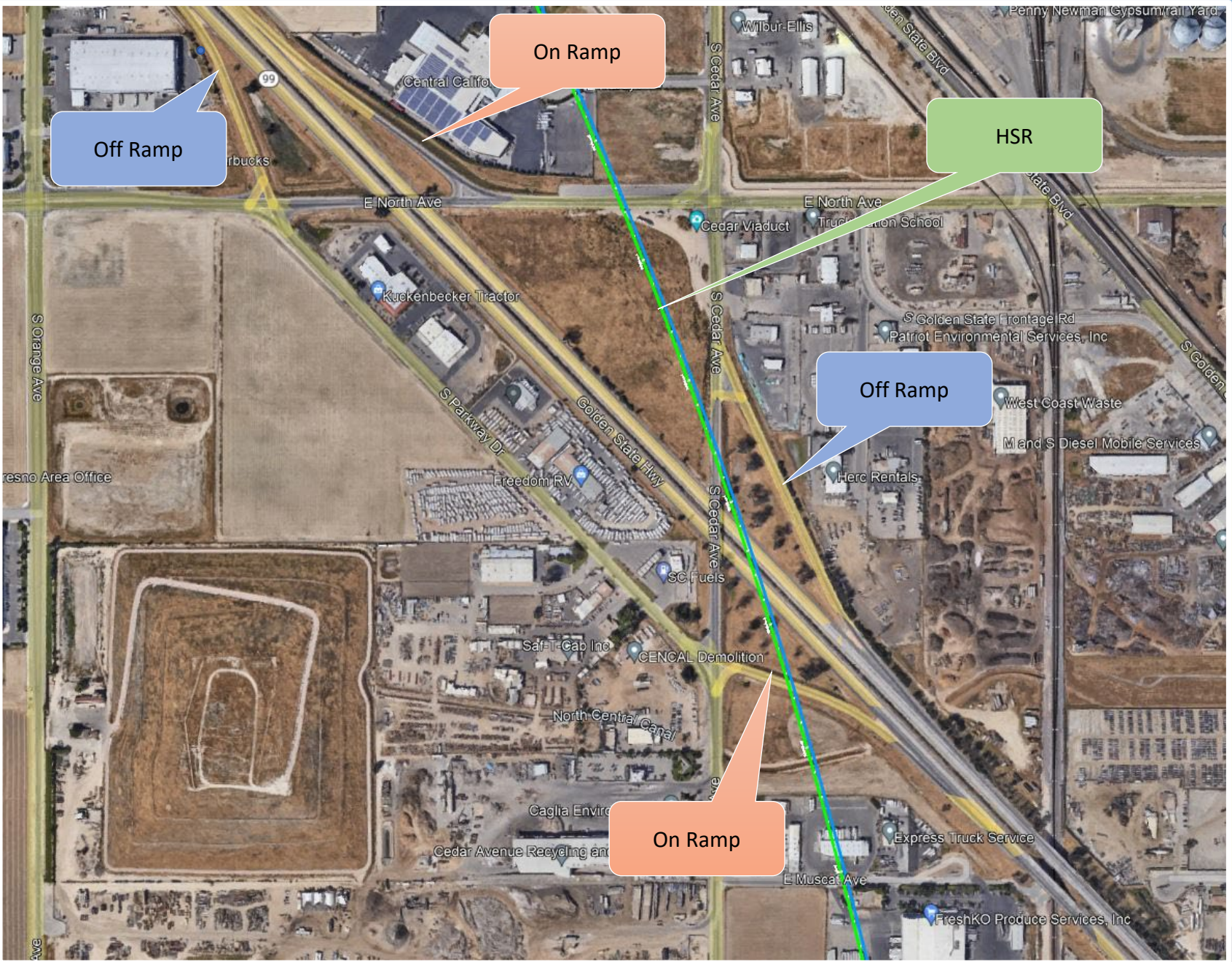
# Alternative 2

## Partial Cloverleaf



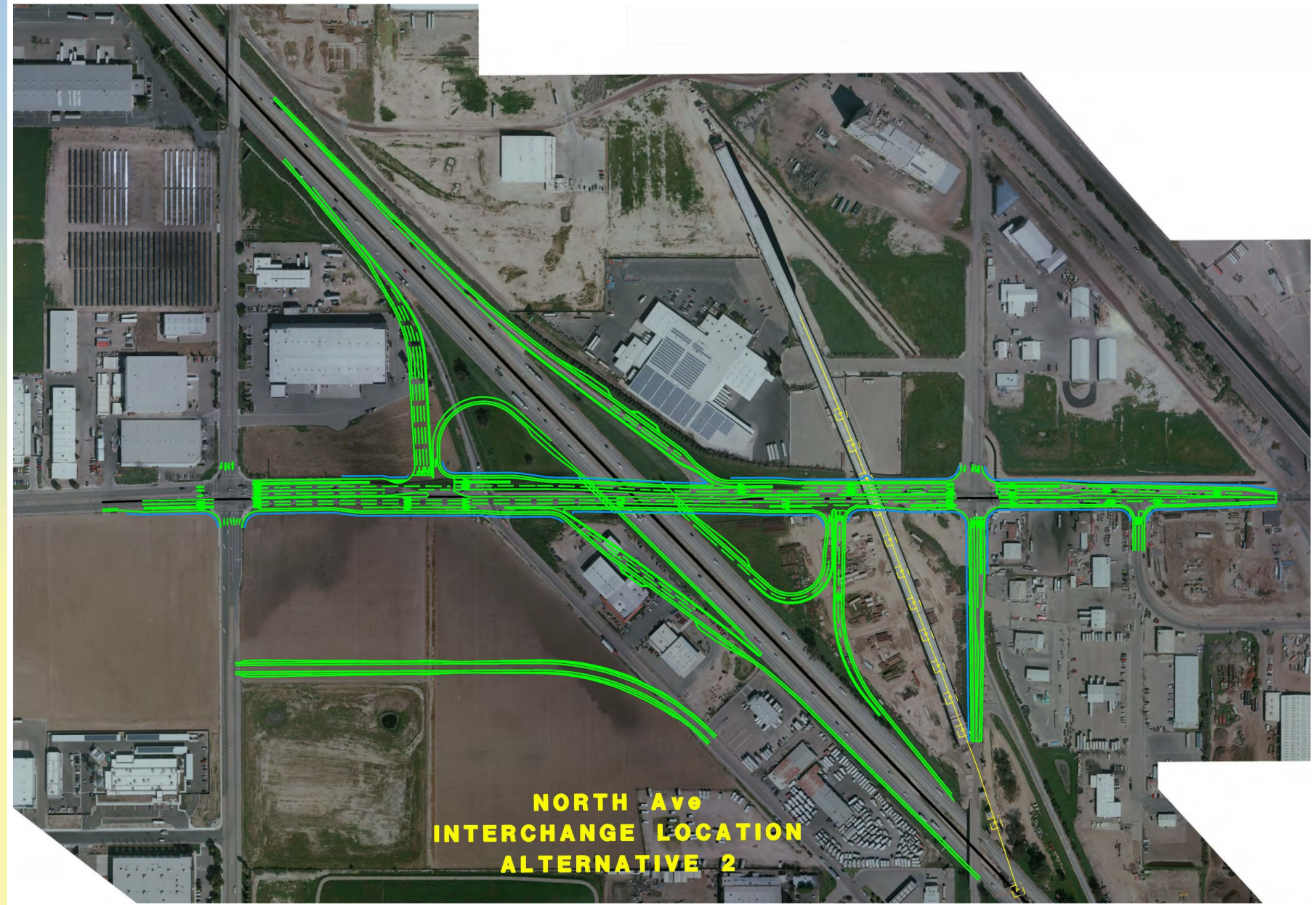


# Existing North Avenue & Cedar Avenue



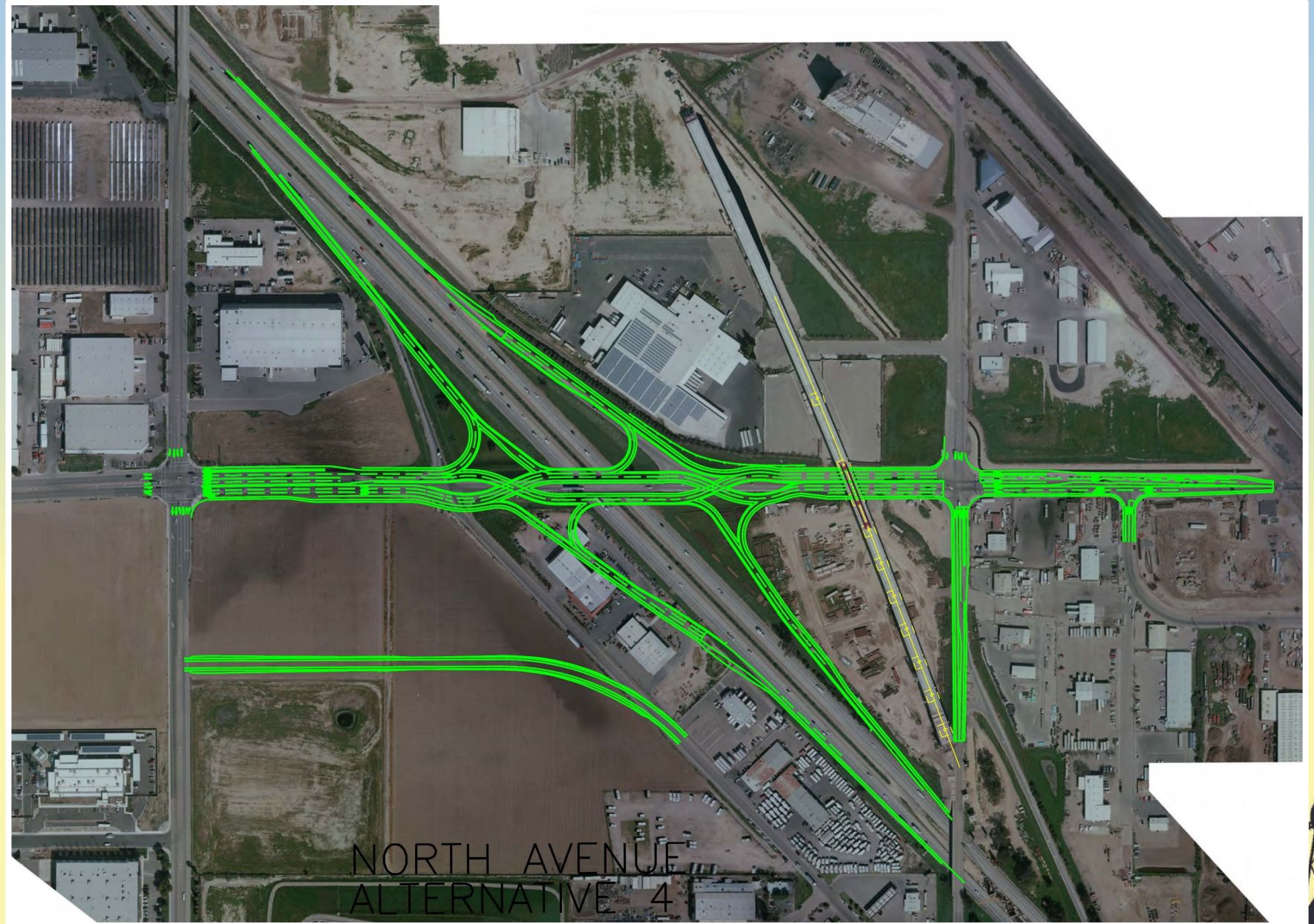


# Alternative 2 Modified Partial Cloverleaf





# Alternative 4 Diverging Diamond Interchange



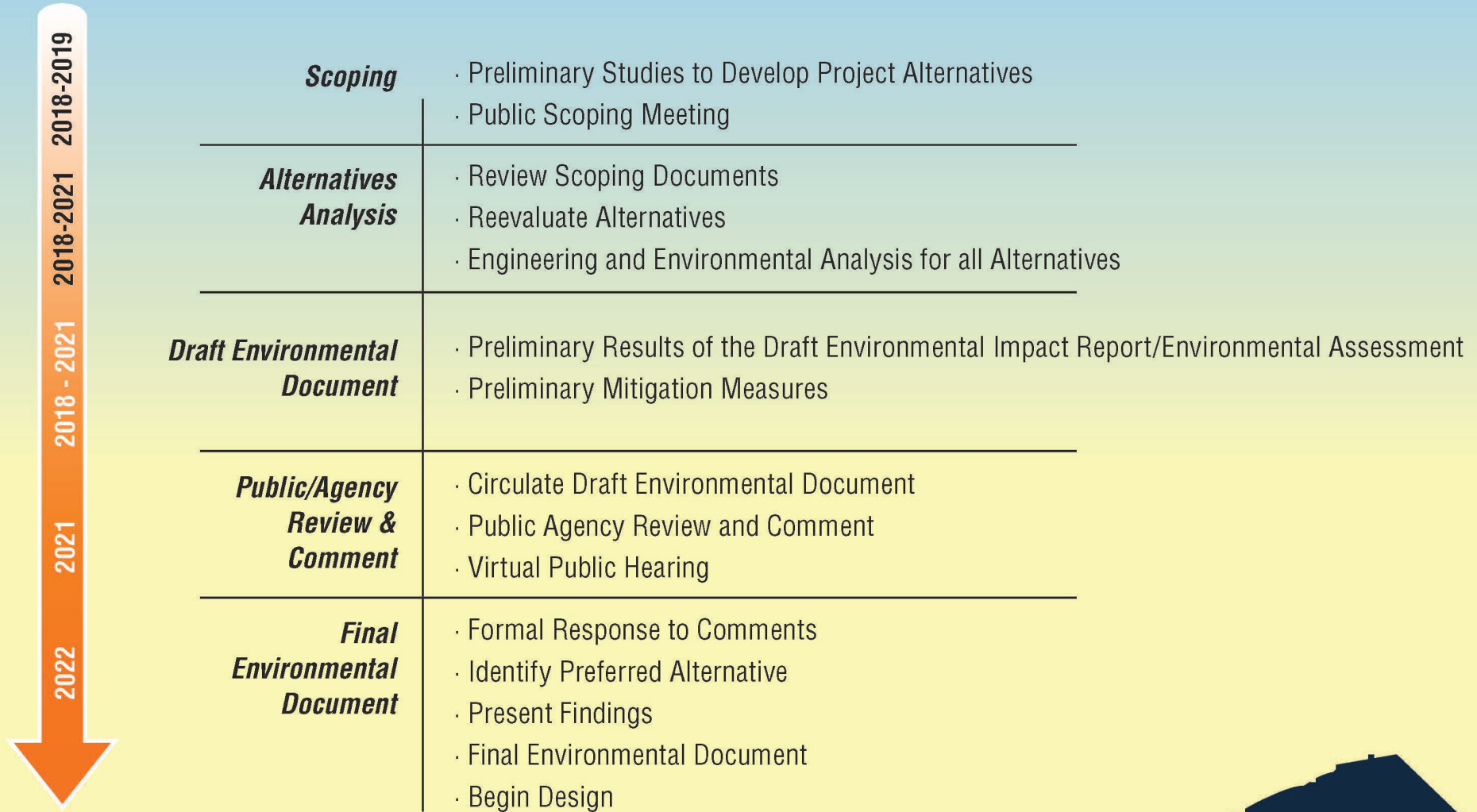
# Project Construction and Cost

- **Total project costs**, including construction and right-of-way capital costs and support costs, are estimated to be between \$119 million to \$146 million using 2021 dollars, depending on the Build Alternative selected
- **Construction** would take about 30 months and would begin as early as the fall of 2024 and complete in the summer of 2027
- **Project funding** is based on a combination of local, state, and federal sources





# Environmental Process



# Greenhouse Gas Reduction Strategies

The project includes features and measures that reduce greenhouse gas emissions, such as:

- Electric Vehicle charging station would be installed within Fresno County
- Complete Streets features such as sidewalks, crosswalks, signalization, and wider shoulders
- The installation of Intelligent Transportation System through updating existing traffic signals and installing traffic monitoring stations, ramp meters, and closed-circuit televisions
- Roundabouts proposed under several alternatives



# Community Emissions Reduction Program

## Top Community Sources of Concern

Heavy Duty Trucks

High Polluting & Idling Cars

Residential Wood Burning

Land-Use/Industrial Development

Illegal Burning

Industrial Processes





# Community Emissions Reduction Program

The project includes features and measures that reduce greenhouse gas emissions that align with the strategies outlined in the Community Emissions Reduction Program.

- Install an Electric Vehicle charging station
- Complete Streets features such as sidewalks, crosswalks, signalization, and wider shoulders to promote increased walkability, and commute alternatives
- Road paving improvements



# Mitigation Recommendations

Caltrans welcomes your input and recommendations on additional measures to reduce greenhouse gas emissions.

- Install electric charging infrastructure for heavy duty mobile sources
- Urban Greening - Heat Island Mitigation
- Vegetative Barriers in South Central Fresno - Mitigation that includes the installation of vegetative barriers around/near sources of concern



# Next Steps

- All comments received during the circulation period will be formally responded to in the final environmental document
- This meeting will be summarized in Chapter 4 *Comments and Coordination* of the final environmental document
- Mitigation recommendations will be considered for the incorporation in the final environmental document
- The final environmental determination and project approval of the selected preferred alternative is expected in June 2022





# Questions & Answers

For more information, please visit our project website:

<https://dot.ca.gov/caltrans-near-me/district-6/district-6-projects/06-0h240>

