



Off-Road and Locomotive Overview

Ify Mordi, Enforcement Staff
Mae Colcord, Enforcement Manager

Off-Road Sources



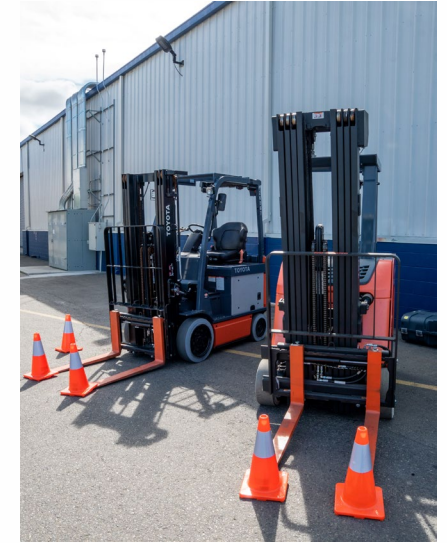
Transport Refrigeration Unit



Small Off-Road



Ocean-Going Vessels & Commercial Harborcraft



Forklifts



Cargo Handling Equipment



Portable Equipment



Off-Road Equipment

Regulation Overview

- CARB approved on April 27, 2023
- This regulation will achieve emission reductions from diesel-powered locomotives and increase the use of zero-emission (ZE) technology.
- The regulation will help meet California's public health, air quality and climate goals by reducing criteria pollutants, toxic air contaminants, and greenhouse gas emissions for locomotives in-use.



Applicability



Switcher



Industrial



Freight Line Haul



Historical



Passenger

The In-Use Locomotive Regulation

- Idling Limit
- Registration & Reporting
- Starting in 2030 : In-Use Operational Requirements
- Spending Account

Who Can Do What?

Federal: U.S. EPA

- Regulate locomotive emissions standards
- Stationary and mobile source authority

State: CARB

- Regulate locomotive activity
- Primarily mobile source authority

Local: Air Districts

- Regulate railyard emissions
- Primarily stationary and indirect source authority

How To File an Environmental Complaint

Who to report to

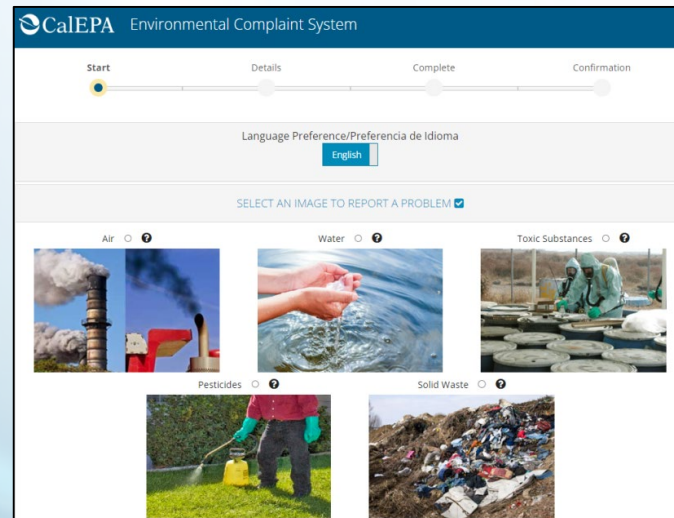
- Local Air District/CARB/CalEPA

What you can report

- Anything you think is affecting the air you breathe

Important elements to include

- Who
- What
- When
- Where

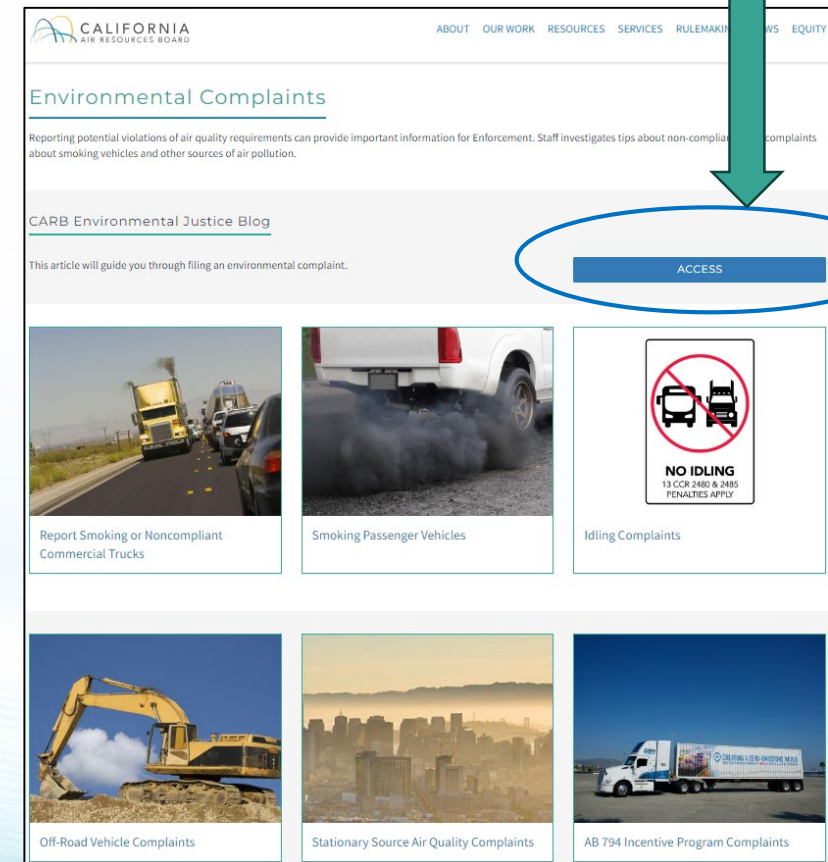


CalEPA Environmental Complaint System:
<https://calepa.ca.gov/enforcement/complaints/>

CARB Environmental Complaints:

<https://ww2.arb.ca.gov/environmental-complaints>

<https://carbej.blogspot.com/2020/08/how-to-file-air-polution-complaints.html>



What's next?

- Implementation is set to begin in 2026
- Authorization from US EPA was submitted and currently awaiting approval
- CARB is working with UCI to set up a statewide surveillance system to identify locomotives
- Enforcement is engaging with community members, Air Districts, EPA and locomotive companies to resolve complaints