

# Update on South Central Fresno Community Air Monitoring

South Central Fresno CSC  
Quarter 1 (January – March 2025) Update

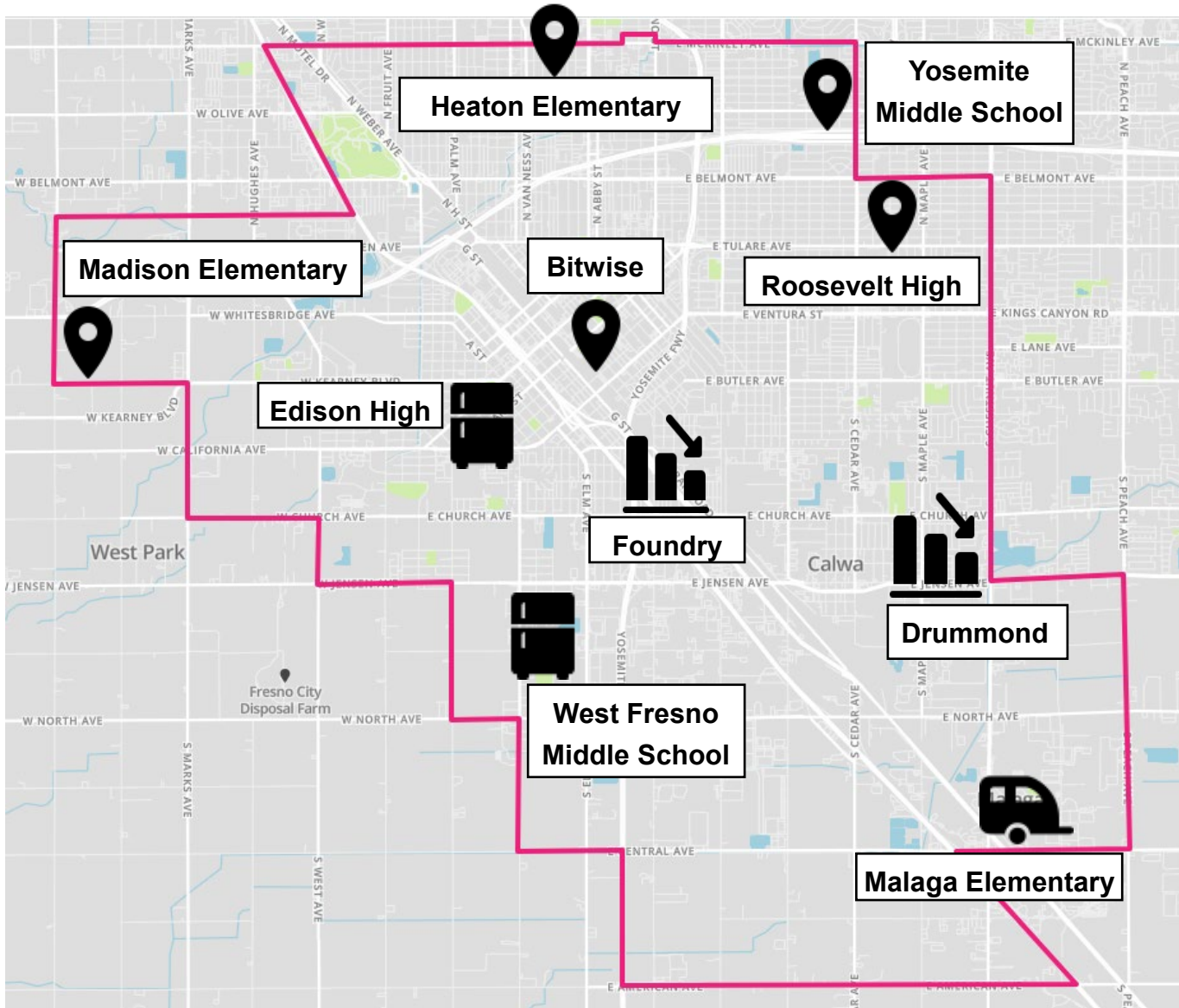
# Air Monitoring Update

Status of Community Air Monitoring Plan Implementation

Review Air Monitoring Data Collected

Questions, Comments, And Recommendations

# CAMP Fully Deployed



**PM2.5  
Monitor**



**Compact System:** PM2.5, Black Carbon, Ozone, BTEX, NOx, VOC, CO (Edison), Toxics (Edison), SO2 (West Fresno)



**Regulatory Air  
Monitor:** Foundry (PM2.5), Drummond (Ozone, NO2, PM10)



**Trailer:** PM2.5, Black Carbon, Ozone, CO, NO2/NO, H2S/SO2, BTEX



**Mobile Monitoring**

**Van:** respond to community concern

# Ongoing Community Air Monitoring

- District continuing to conduct localized air monitoring in the South Central Fresno community
- Fully deployed air monitoring platforms across the community, according to Community Steering Committee recommended network design
- Extensive PM<sub>2.5</sub> and VOC speciation sampling and laboratory analysis being conducted since late 2019
- Continue to seek input from CSC on air monitoring deployment and analysis

# Air Monitoring Update Summary

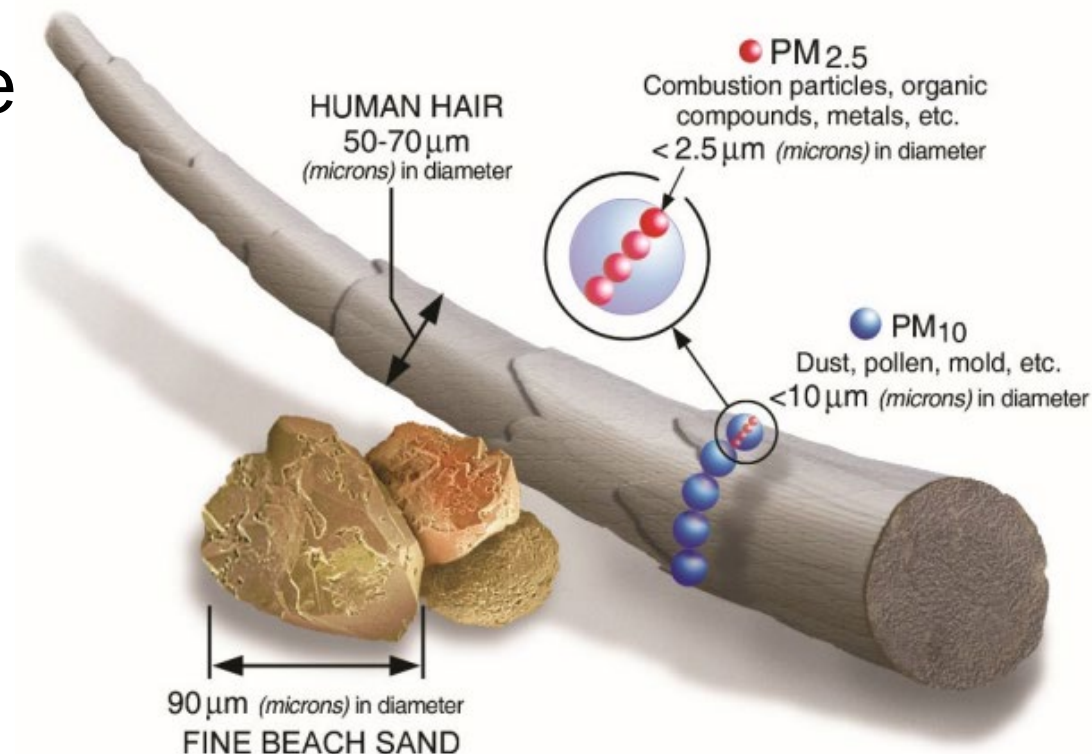
Lower PM2.5 levels in recent years but vary by location.

Cold, dry, and stagnant conditions in winter months contributed to higher PM2.5 levels

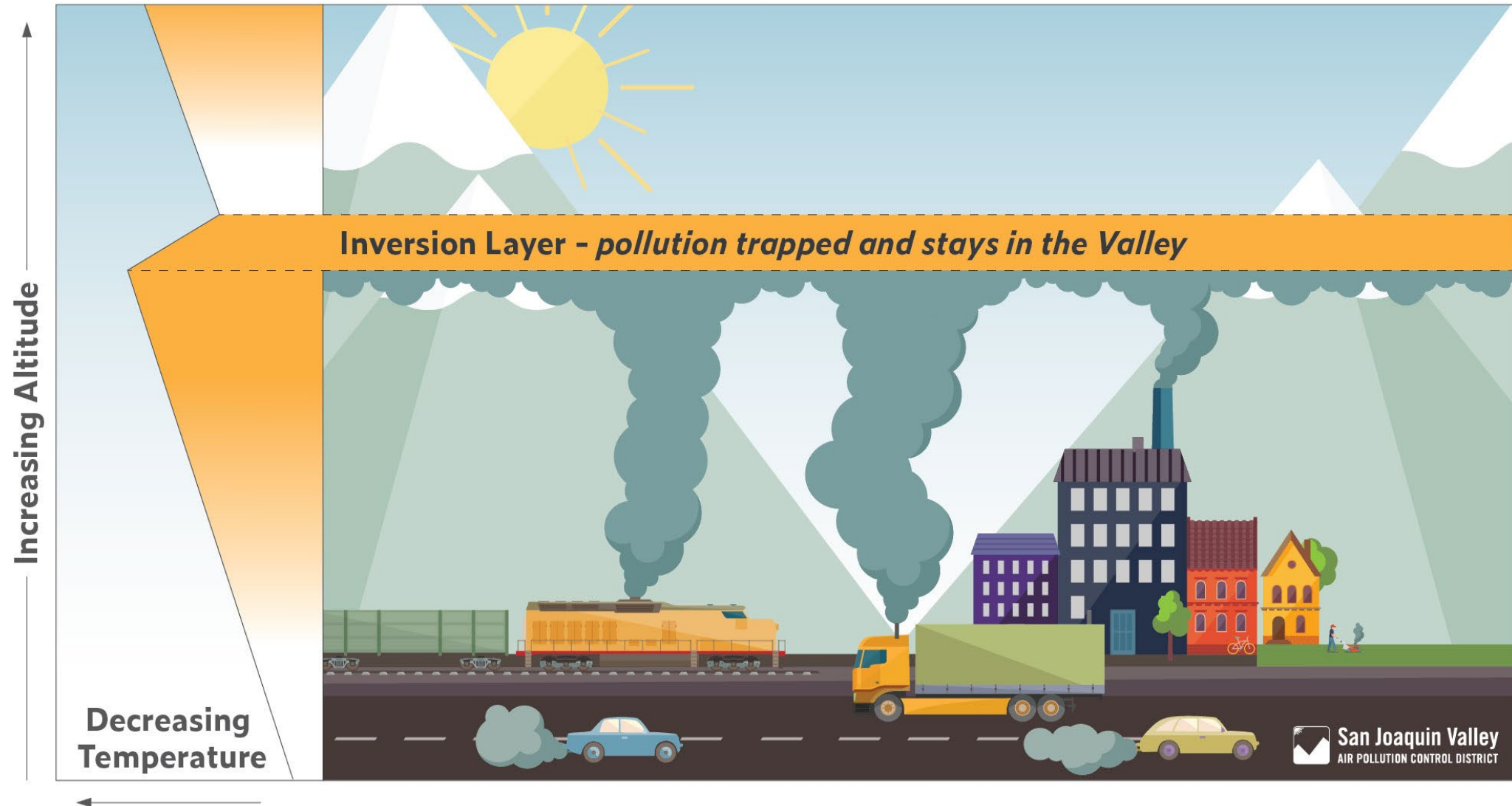
Air monitoring data available online at your community portal

# Winter Air Pollution: PM 2.5

- PM2.5 is primary pollutant during winter
- Can be emitted directly, like smoke from fireplaces
- Can be formed in the atmosphere when certain compounds are present, like NO<sub>x</sub> from trucks
- PM levels worse when inversion layer, or lid, sits over Valley

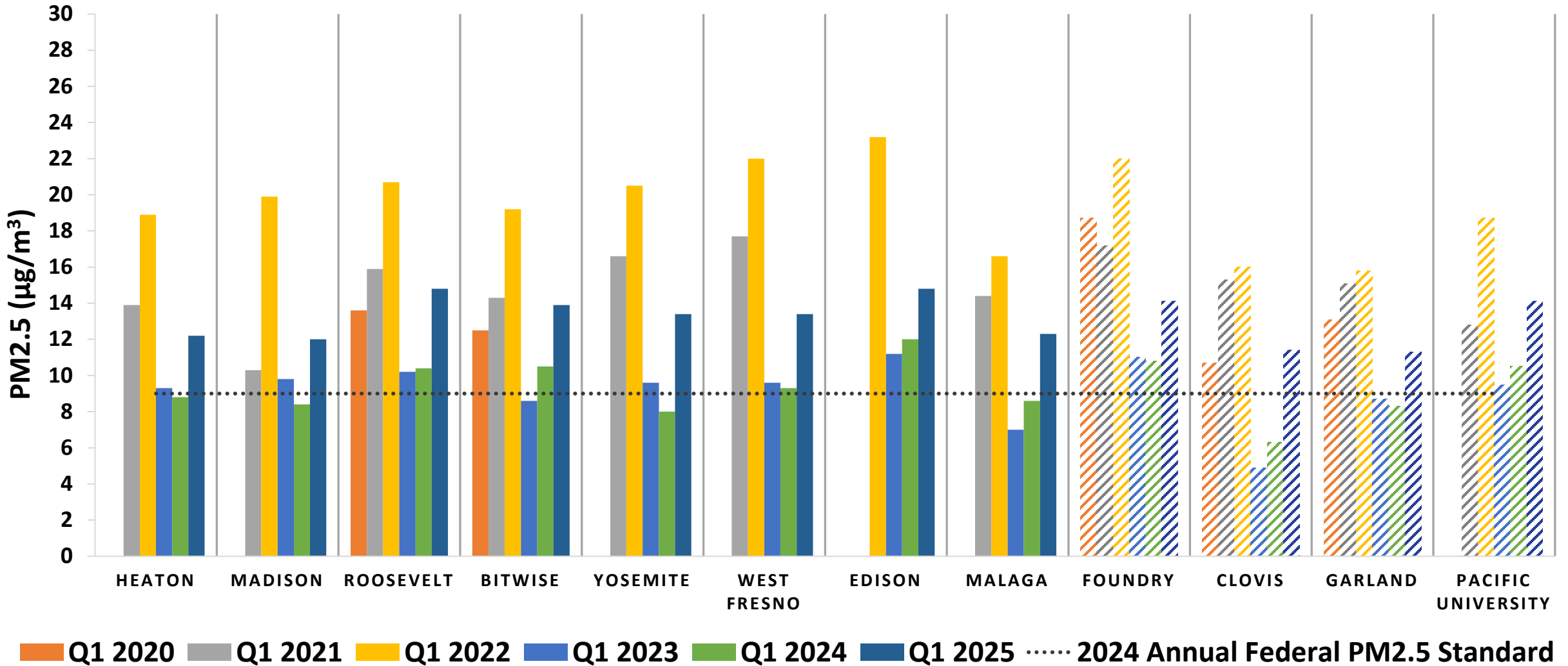


# What causes PM2.5 levels to be higher in the winter?



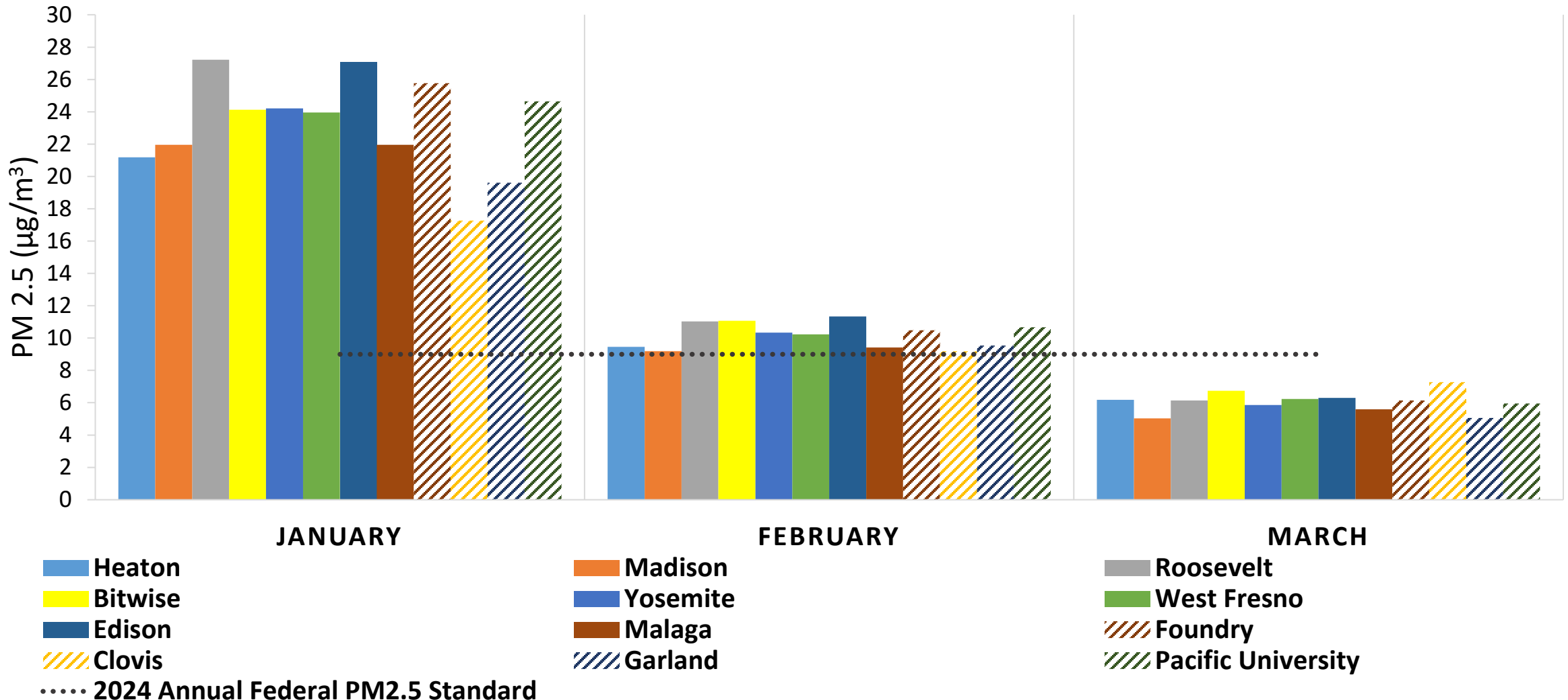
# Quarter 1 Average PM2.5 Comparison

Lower PM2.5 levels in recent years but vary by location.



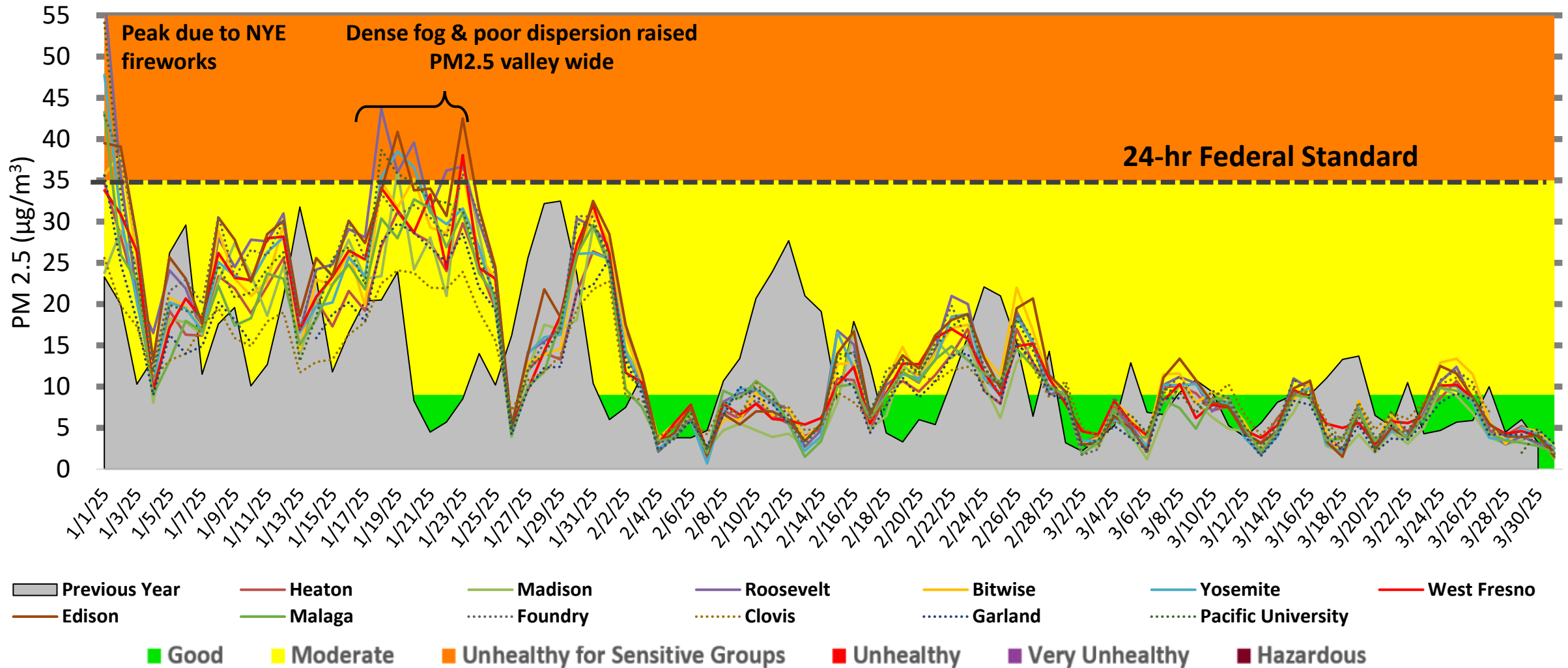
# PM2.5 Monthly Average Comparison

Stagnation contributed to higher PM2.5 in winter season



# Daily Average PM2.5 Quarter 1 2025

Cold, dry, and stagnant weather contributed to elevated PM2.5 in January



# How can the District make sure the community knows that we expect worse air quality?



## NEWS Release



24hr Media Cell Phone (559) 309-3336

For immediate release 06-27-2024

Attn: Local news, weather, health and assignment editors

Media Contact:  
Heather Heinks (559) 994-7591  
Spanish Media Contact:  
Maricela Velasquez (559) 230-5849

### Fresno County Wildfires Impact Valley Air Quality *District has issued an Air Quality Alert with the National Weather Service*

Ongoing wildfires in the Eastern Fresno County are generating smoke that is now affecting the San Joaquin Valley. Weather patterns through this weekend have the potential to continue to draw wildfire smoke into the Valley counties of Madera, Fresno, Tulare and Kern. As a result, the District has issued an Air Quality Alert with the National Weather Service. Residents impacted by the smoke are advised to stay indoors to minimize exposure to particulate matter (PM) emissions. This Air Quality Alert is in effect until the fires are extinguished.

The District strongly urges the public to take health-protective actions to stay safe when smoke from wildfires affects the Valley, including following [air-quality recommendations](#) when making decisions about outdoor activities. Additional health protective actions include:

- Staying indoors
- Using portable air cleaners or high-efficiency filters to remove fine particles from the air
- Planning ahead and creating a [clean air room](#)
- Visiting a [Clean Air Center](#). Similar to the Valley's cooling centers, the District's Clean Air Centers provide relief when wildfires & smoke events occur



- News releases are issued before known and expected high pollution days
- District posts updates to social media sites like Facebook, X, and Nextdoor
- Keep health departments and schools notified



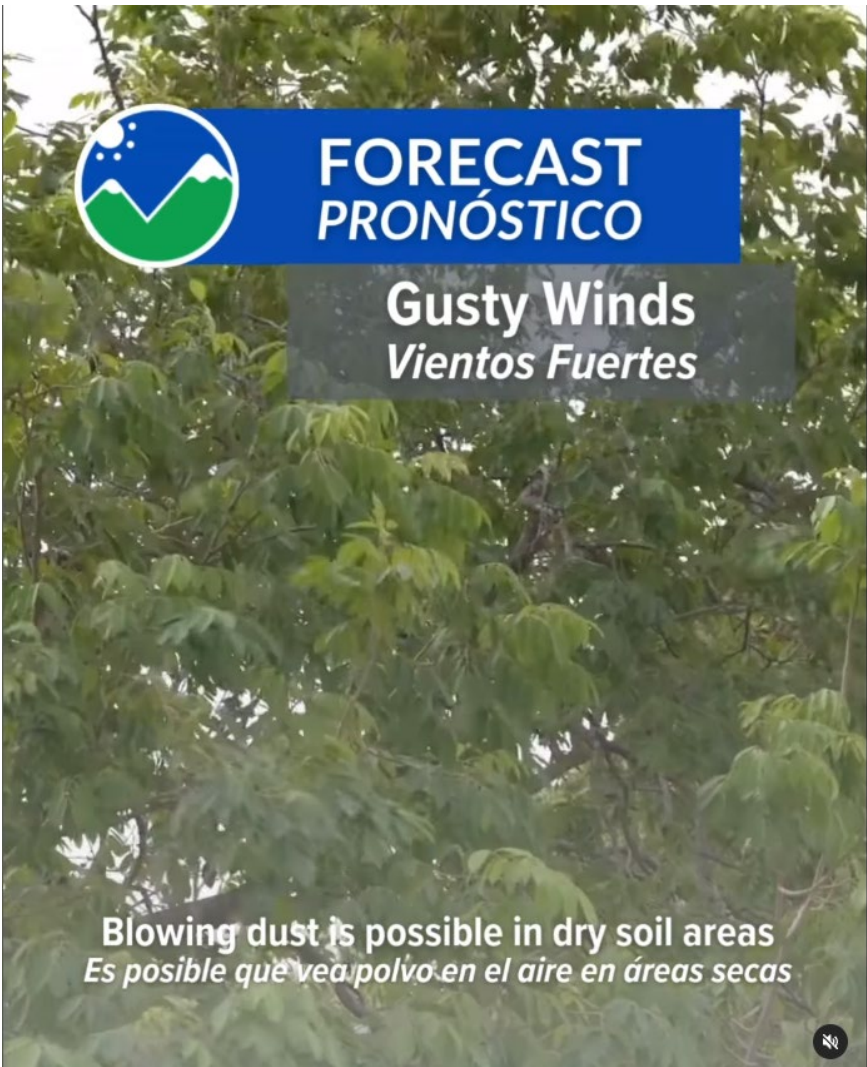
Valley Air District  
Published by Hootsuite

July 19

Are you [#SmokeReady](#)? Visit our wildfire resource page for health tips and fire information. Remember, if you can see ash or smell smoke, you are being impacted by particulate matter pollution. Learn more at [www.valleyair.org/wildfires](http://www.valleyair.org/wildfires).

[#ValleyAirDistrict](#) [#Wildfire](#) [#Smoke](#)

# How can the District make sure the community knows that we expect worse air quality?



**San Joaquin Valley Air Pollution Control District** ✓  
Outreach & Communications Manager Heather Hei... • 37 min ago • Edited

-> Resources to help protect you from wildfire smoke <-  
Neighbors – we’re on day two of the Boone Fire (near Highway 198 and Boone Lane) and smoke is impacting your area. If you can see ash and smell smoke, you are being impacted by particulate matter pollution and should find an air conditioned/filtered space or leave the area. The District has a wildfire resource page that can keep you up to date on air quality conditions and fire conditions. [www.valleyair.org/wildfires](http://www.valleyair.org/wildfires)

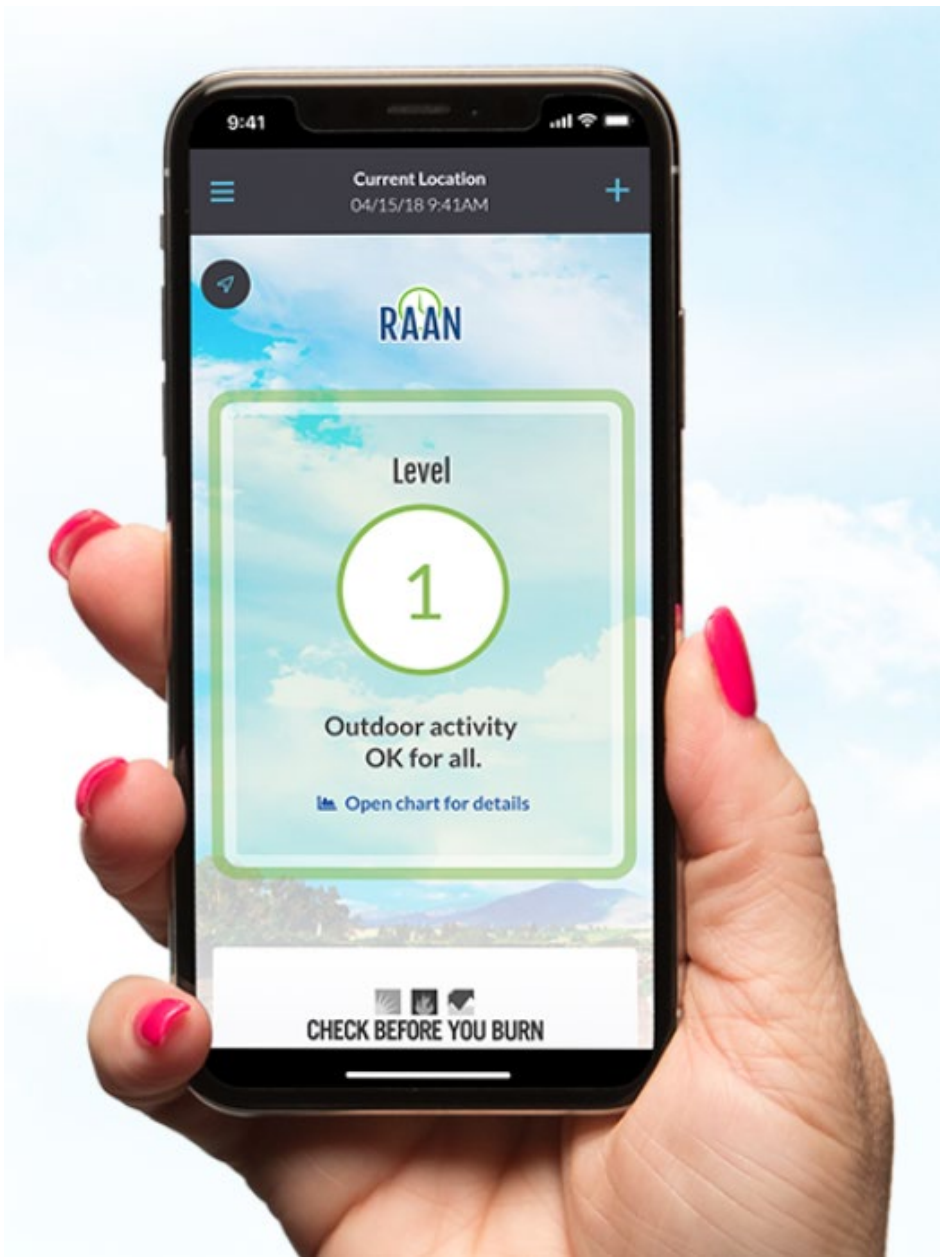
The Valley Air District team in partnership with CCEJN will be in the Coalinga area TODAY (9-4-2024/11am - 2pm) helping residents sign up for our Clean Air Rooms program. You can sign up directly right now at [www.valleyair.org/roompurifier](http://www.valleyair.org/roompurifier) or visit us today and we’ll help you sign up.

Iglesia Apostolica de la Fe en Cristo Jesus  
401 N Coalinga St.  
Coalinga CA 93210

**Boone Fire**  
9% Contained | 11,000 Acres | 1 County: Fresno

**Fresno County Evacuation**

Legend:  
Fresno County Road Blocks  
Other  
Fresno County Road Closures  
Fresno County Road Detours  
CalTransTrafficData - Closure  
CalTransTrafficData - CHP Incidents  
CHP Incident  
CHP Incident (Full Closure)  
Fresno County Evacuations  
Evacuation Order(s) Lifted  
Evacuation Warning  
Evacuation Order



# How to File an Air Pollution Complaint

Complaints may be filed online, by phone, or by using the Valley Air app on your smart phone

- Complaints are responded to 365 days a year
- Your information is confidential
- Filing a complaint will put you in touch with an Air Quality Inspector assigned to the complaint

Madera, Fresno, Kings

[\(800\) 870-1037](tel:(800)870-1037)

[valleyair.org/complaints](https://valleyair.org/complaints)

# Community Air Quality Data

- District AB 617 webpage at: <http://community.valleyair.org/community-air-monitoring>
  - Real-time community air monitoring data
  - Air monitoring data from vans, as requested
  - Quarterly reports
- CARB's statewide air quality data portal (AQview) displays and provides community air monitoring data from AB 617 communities
  - AQview website located at: <https://aqview.arb.ca.gov/>
  - Air quality data from Valley AB 617 communities available at this website
  - Development ongoing, new features to be added

# Comments/Questions?