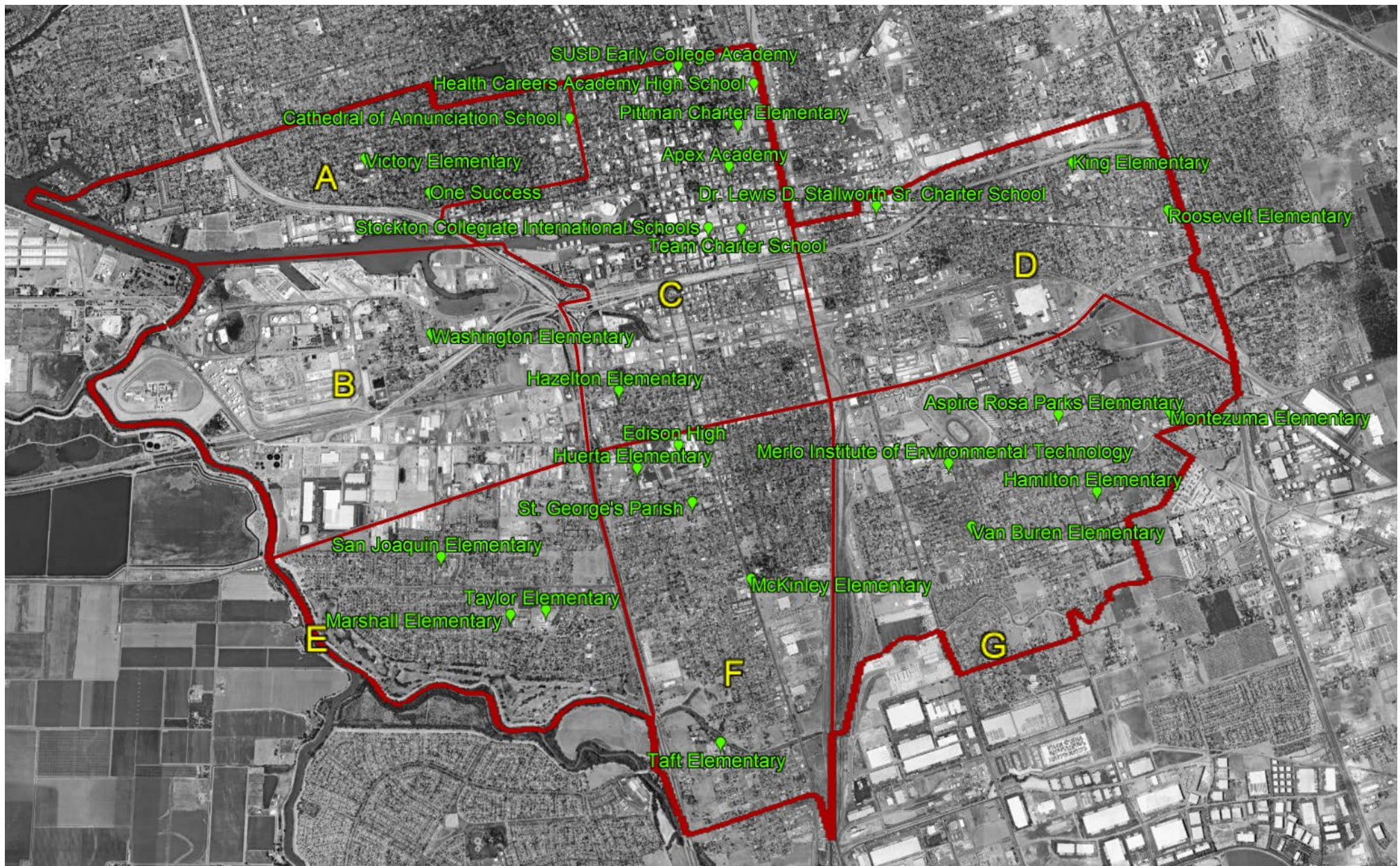


Potential School Sites for Air Monitoring in Stockton



Note: One (1) air monitoring sampler or system to be deployed in each air monitoring section below. Highlighted locations below already recommended by subcommittee.

Section A – Real-time PM2.5, VOC Speciation Sampling

- One Success School (prioritized as primary location by subcommittee based on proximity to freeway)
- Victory Elementary School (prioritized as back-up location by subcommittee, based on proximity to freeway, and if primary location is not viable)
- Cathedral of Annunciation School (residential)

Section B – Air Monitoring Trailer

- Washington Elementary School (prioritized by subcommittee based on proximity to Port and freeways)

Section C – Compact Multi-pollutant Monitor

- Team Charter School (prioritized as primary by subcommittee based on proximity to freeway)
- Stockton Collegiate International Schools (prioritized as back-up by subcommittee, based on proximity to freeway, and if primary location is not viable)
- **Hazelton Elementary (could consider as primary location, playground next to freeway)**
- Health Careers Academy High School (next to train tracks)
- Stockton Unified Early College Academy (next to potential heavy traffic intersection)
- Pittman Charter School (residential)
- Apex Academy (residential)

Section D – Real-time PM2.5

- **Roosevelt Elementary (recommended location, school playground next to Highway 99)**
- King Elementary (recommended location, 0.1 miles downwind of freeway)
- Dr. Lewis D. Stallworth Sr. Charter School (0.1 miles upwind of freeway)

Section E – Real-time PM2.5

- **San Joaquin Elementary & Middle School (recommended location, downwind of Port, residential area)**
- Taylor Elementary School (residential, 0.5 miles from freeway)
- Marshall Elementary School (residential)

Section F – Real-time PM2.5

- **Taft Elementary School (recommended location, 0.25 miles from freeway, 0.5 miles from train track)**
- Huerta Elementary School (0.2 miles from freeway)
- Edison High School (close to freeway)
- St. George's Parish School (close to freeway)
- McKinley Elementary School (0.4 miles from railyard)

Section G – Compact Multi-pollutant Monitor

- **Merlo Institute of Environmental Technology (recommended location, 0.4 miles from railyard)**
- Montezuma Elementary School (recommended location, 0.35 miles from freeway)
- Van Buren Elementary School (0.7 miles from railyard, residential)
- Hamilton Elementary School (0.5 miles from freeway)
- Aspire Rosa Parks Elementary School (residential, next to open field)