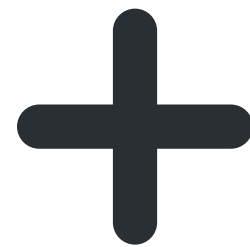


# Do you support this?

**Vegetative Barriers  
\$803,909**

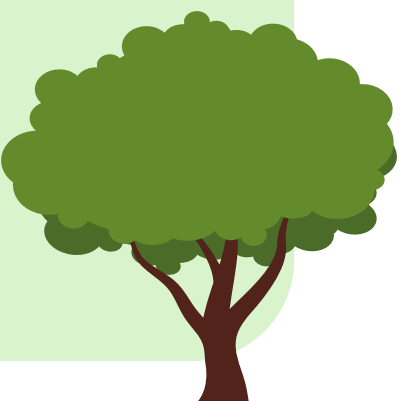
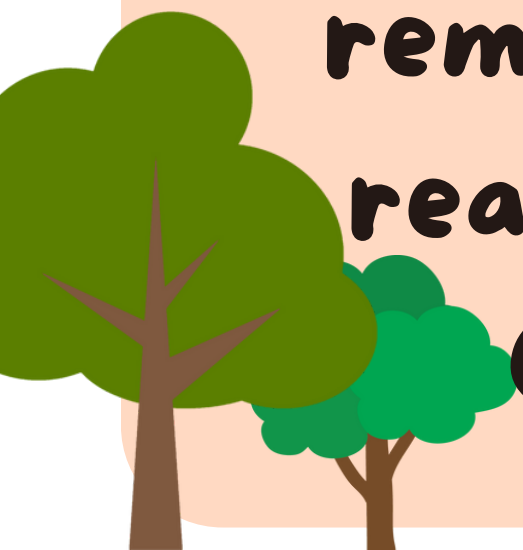
**Plant Lerdo Highway  
Vegetative Barrier (50 Trees  
for \$253,000)**

**Continue outreach for the  
remaining \$550,909 and  
reassess progress with  
CSC in 6 months**



**Reallocate Funds  
to Urban Greening**

**Move \$550,909 from  
Locomotive Measure to  
Urban Greening. Plant ~200  
trees at parks, schools, and  
community sites**

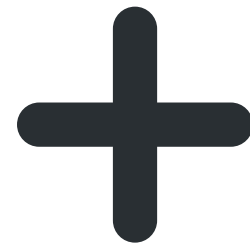


# ¿Apoyas esto?

**Barreras Vegetativas**  
**\$803,909**

Plantar una barrera  
vegetativa en Lerdo Highway  
(50 árboles por \$253,000)

Continuar  
el alcance de los \$550,909  
restantes y volver a evaluar  
con el Comité en 6 meses



**Reasignar Fondos a  
Ecologización Urbana**

Mover \$550,909 de la medida  
de Locomotoras, a la de  
Ecologización Urbana. Plantar  
~200 árboles en parques,  
escuelas, y otros sitios  
comunitarios

