

Shafter AB 617 Community Air Monitoring Update

Community Steering Committee Meeting
January 13, 2020

Online Sites in Shafter

Real-Time PM2.5

- Shafter DMV
- Grimmway Academy

VOC and PM2.5 Speciation

- Shafter DMV
- Measurements to begin here until North Shafter Migrant Center trailer is in place

Mobile Monitoring Van

- Monitoring began last week, including around airport and Mexican Colony

Pending Sites in Shafter

Real-Time PM2.5

- **Additional Monitor near Mexican Colony or Cherokee Strip**
- **Golden Oak Elementary:**
Entering final siting and electrical agreements with Richland School District

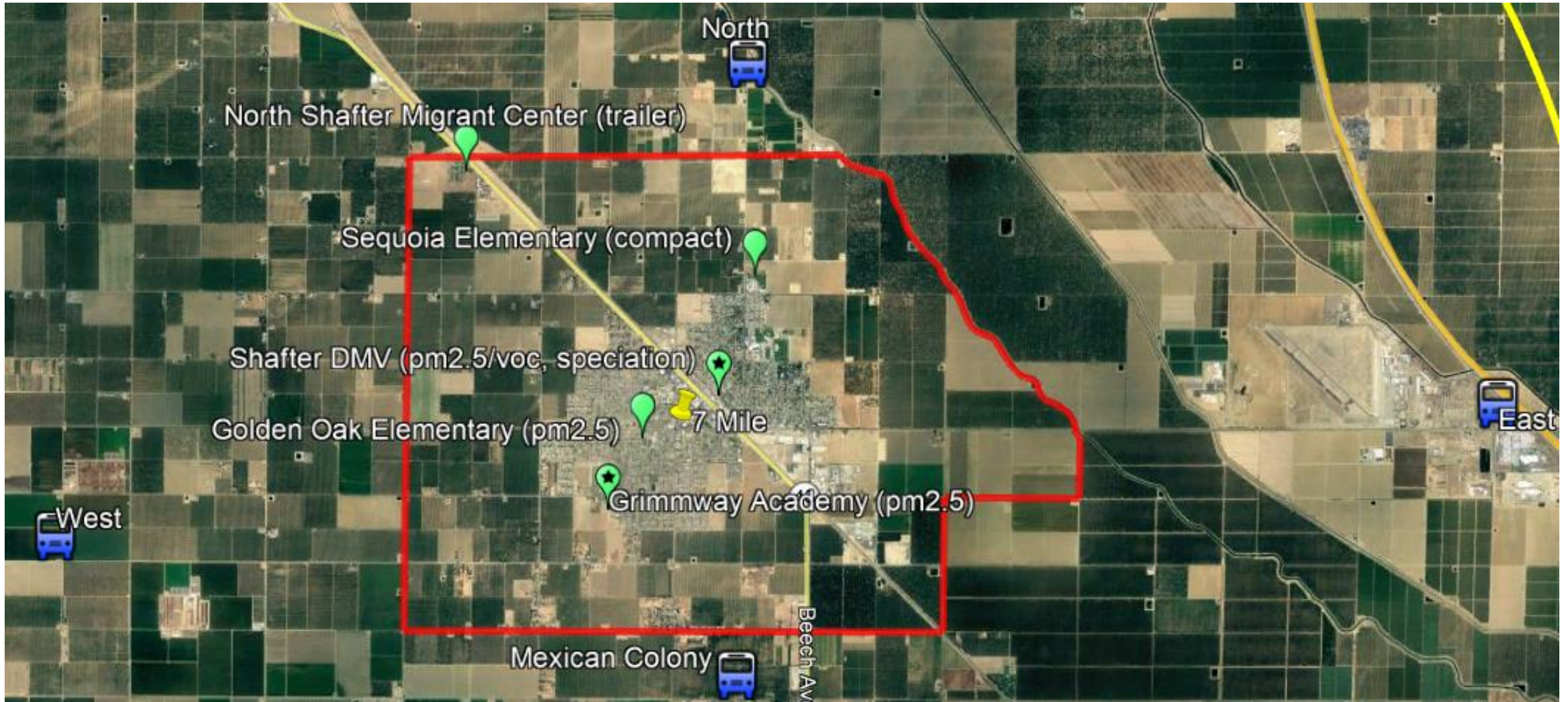
Compact Monitoring System

- **Sequoia Elementary:**
Entering final siting and electrical agreements with Richland School District

Trailer

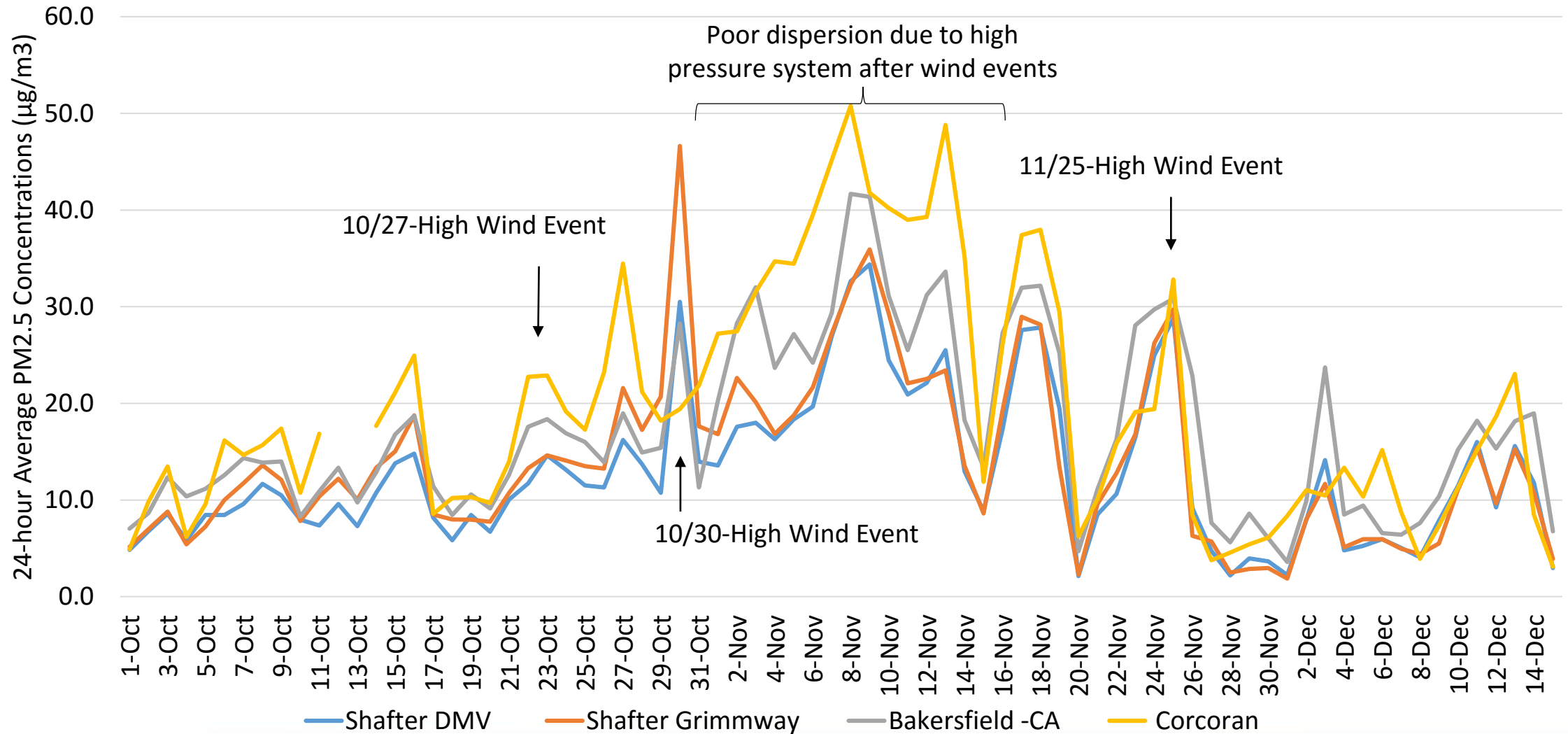
- **North Shafter Migrant Center:**
Entering final siting and electrical agreements with Kern County

Air Monitoring Sites



Daily Average PM2.5 Data Comparison

October 1 - December 10, 2019



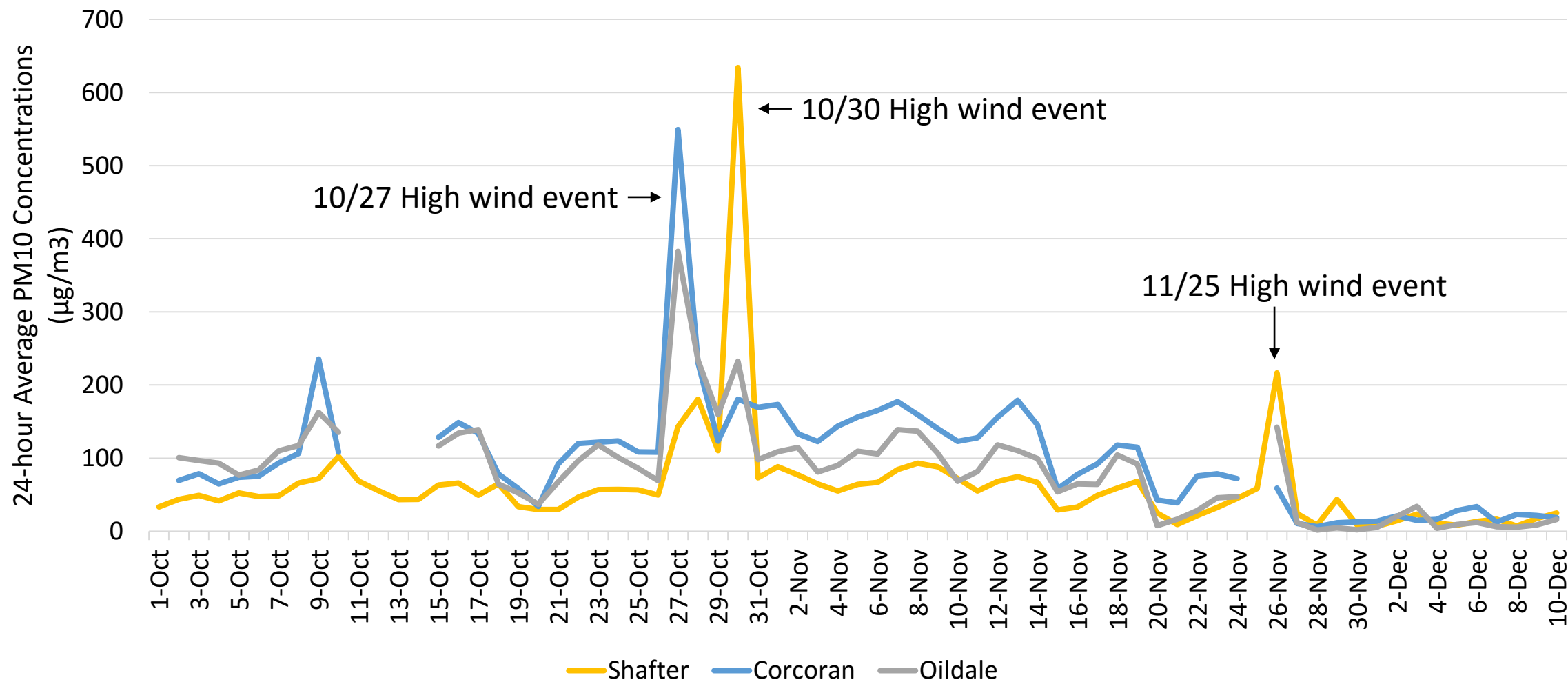
Comparison of Average PM2.5

October 1- December 15, 2019

Site	Average PM2.5 Concentration ($\mu\text{g}/\text{m}^3$)
Bakersfield-California	17.19
Corcoran	19.88
Shafter-DMV	12.85
Shafter-Grimmway	13.99

Daily Average PM10 Data Comparison

October 1 - December 10, 2019



Comparison of Average PM10

October 1- December 15, 2019

Site	Average PM10 Concentration ($\mu\text{g}/\text{m}^3$)
Oildale	73
Corcoran	74
Shafter-DMV	46

Availability of Collected Community Air Quality Data

- CARB developing statewide air quality data portal (AQview) to display and provide community air monitoring data from selected AB 617 communities
 - AQview website located at: <https://ww2.arb.ca.gov/es/community-air-quality-portal>
 - Air quality data from Valley AB 617 communities now available at this website
 - Monthly data will continue to be made available as air monitoring campaign continues
- Real-time community air monitoring data available on District AB 617 webpage at: <http://community.valleyair.org/community-air-monitoring>

Comments/Questions?