

		Platform					
Pollutants	Example Sources	Trailer (x1)	Van (x1)	Compact System (x1)	Stand Alone PM2.5 (x3)	Stand Alone PM10	Pesticide Monitoring
PM10	Road dust, harvesting operations, combustion					x	
PM2.5	Mobile, industry, residential	x	x	x	x		
Black Carbon	Mobile, industry, residential	x	x	x			
NO, NO2, NOx	Mobile, industry	x	x	x			
CO	Mobile	x	x	x			
Ozone	Regional, formed from VOC and NOx	x	x	x			
SO2, H2S	Industry	x	x	x			
VOC (BTEX)	Gasoline distribution and marketing	x	x	x			
VOC Auto GC/MS	Industry, mobile	x					
Toxics	Industry, mobile	x	x				
Meteorology		x	x	x			
Pesticides	Ag Land	some related toxics					x

## Glossary

PM2.5	Particulate Matter of 2.5 microns or less
Black Carbon	Primarily from diesel particulate matter
NO, NO2, NOx	Oxides of Nitrogen (precursor to PM2.5, Ozone)
CO	Carobon Monoxide
Ozone	Regional, formed from VOC and NOx
SO2, H2S	Sulfur Dioxide, Hydrogen Sulfide
VOC (BTEX)	Volitile Organic Compounds (Benzene, Toluene, Ethylene, Xylene)
VOC Auto GC/MS	Other non BTEX Volitile Organic Compounds
Toxics	Many differnt compounds that can cause harmful health effects
Meteorology	Wind speed, wind direction, temperature, humidity

## Current and Planned Air Monitoring Sites

Air Monitoring Site	Pollutants Measured
Shafter DMV	PM2.5 (real-time), PM10 (real-time), Ozone, NO/NO2/Nox
Grimmway Academy	PM2.5 (real-time)
Sequoia Elementary	DPR/CARB Pesticide Monitoring
Sequoia Elementary (planned)	Compact System: PM2.5 (real-time), Black Carbon, BTEX, SO2, H2S, Ozone, NO/NO2/NOx,
Golden Oak Elementary (planned)	PM2.5 (real-time)

## Community Air Monitoring Network Design Worksheet

Full-sized Trailer = select top 2 air monitoring zones as your highest priority areas

Mobile Monitoring Van = select top 5 air monitoring zones as your highest priority areas

PM2.5 Stand Alone = select top 2 air monitoring zones as your highest priority areas

Community Air Monitoring Zone	Full-Sized Trailer Priority (select 2)	Mobile Van (select 5)	PM2.5 Stand Alone (select 2)	Pesticides	Other
A					
B					
C					
D					
E					
F					
G					
H					
I					
J					
K					
L					
M					
N					
O					

Sequoia Elementary: Air Pointer  
DPR Pesticide Monitoring

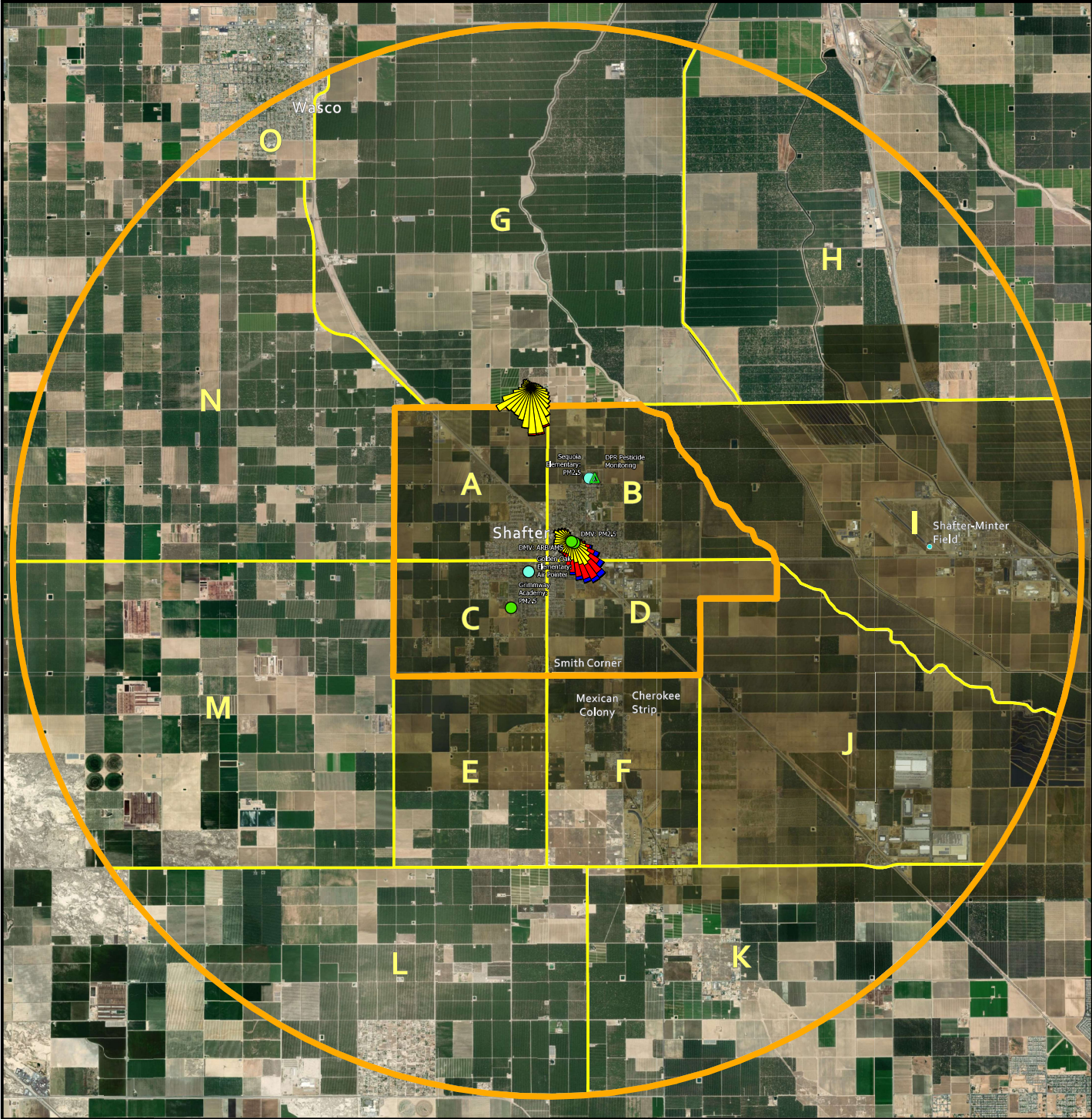
DMV: PM2.5  
DMV: ARB AMS

Golden Oak Elementary: PM2.5

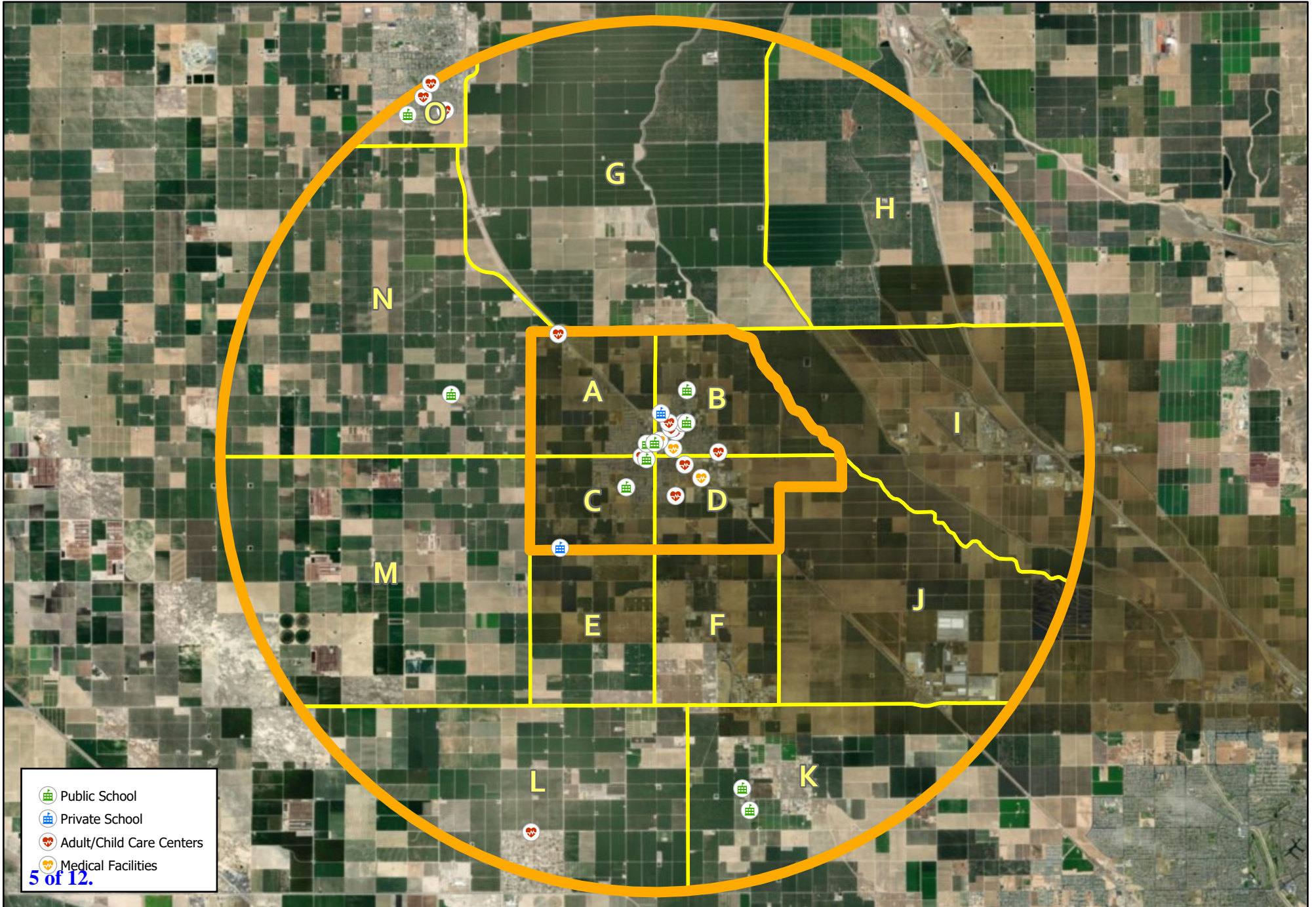
Grimmway Academy: PM2.5

# Shafter Community

- Shafter Community
- Shafter Community Zones
- Existing Monitoring
- Planned Monitoring
- DPR Monitoring

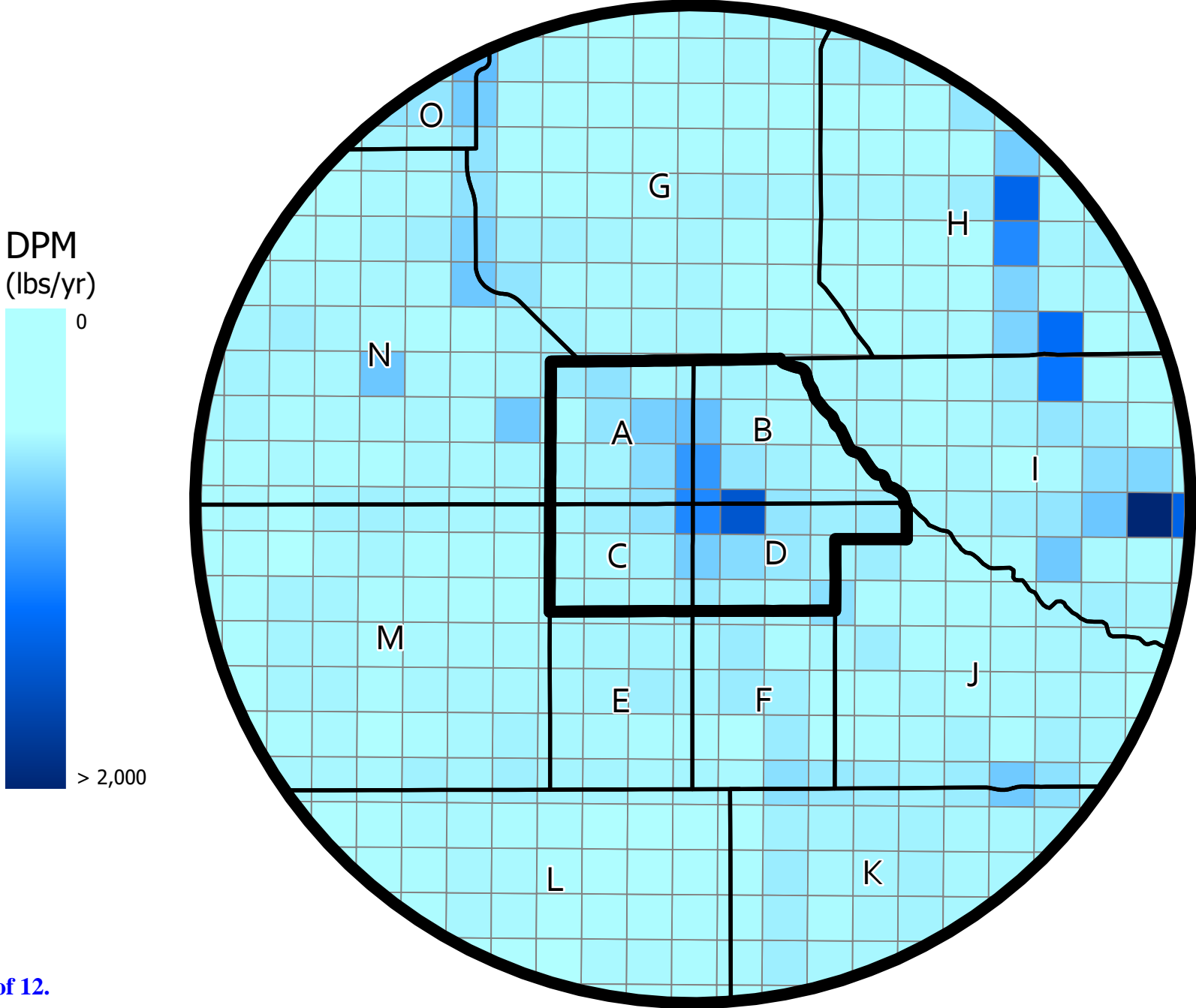


# Sensitive Receptors



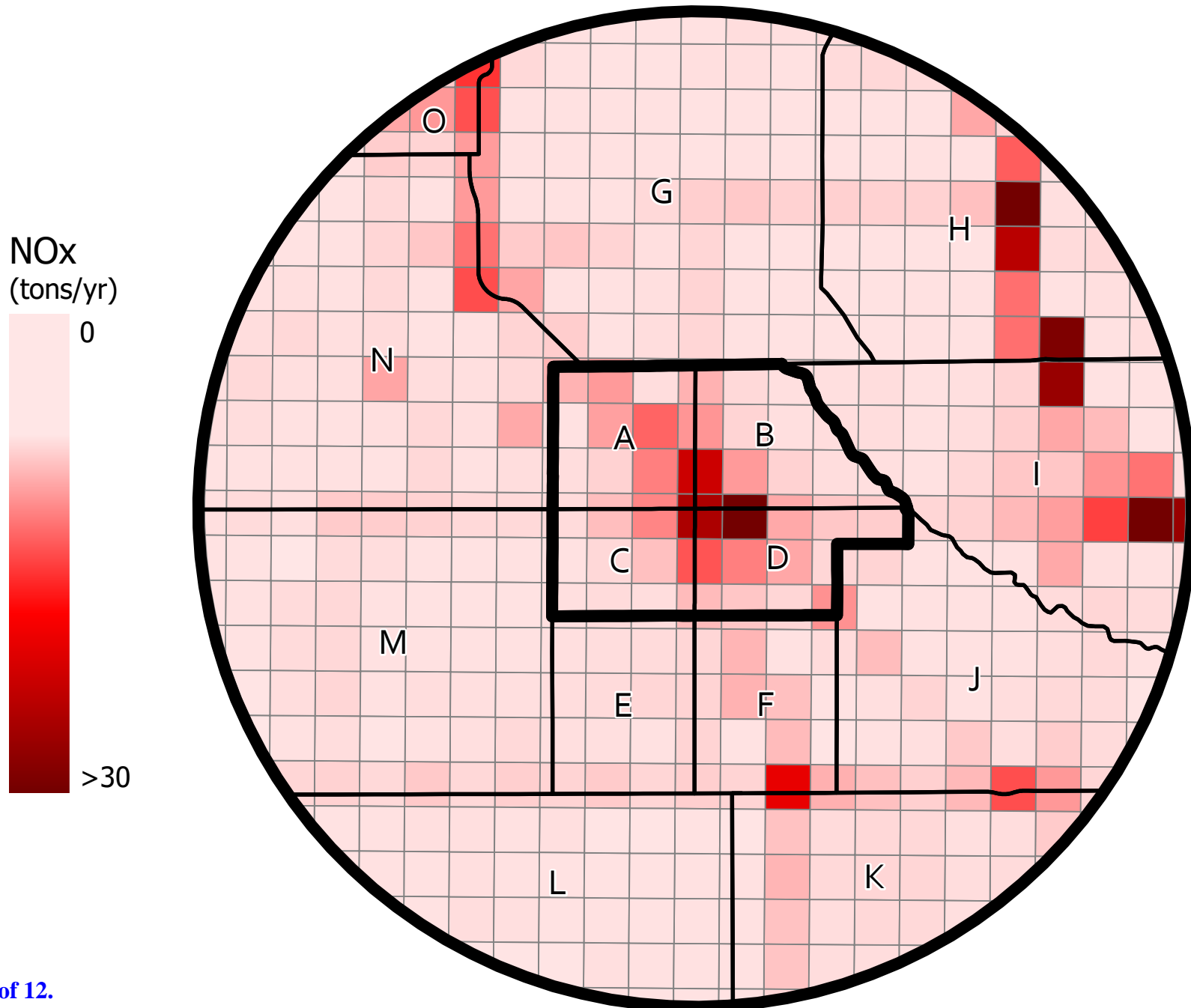
# DPM Emissions

*Emissiones de DPM*



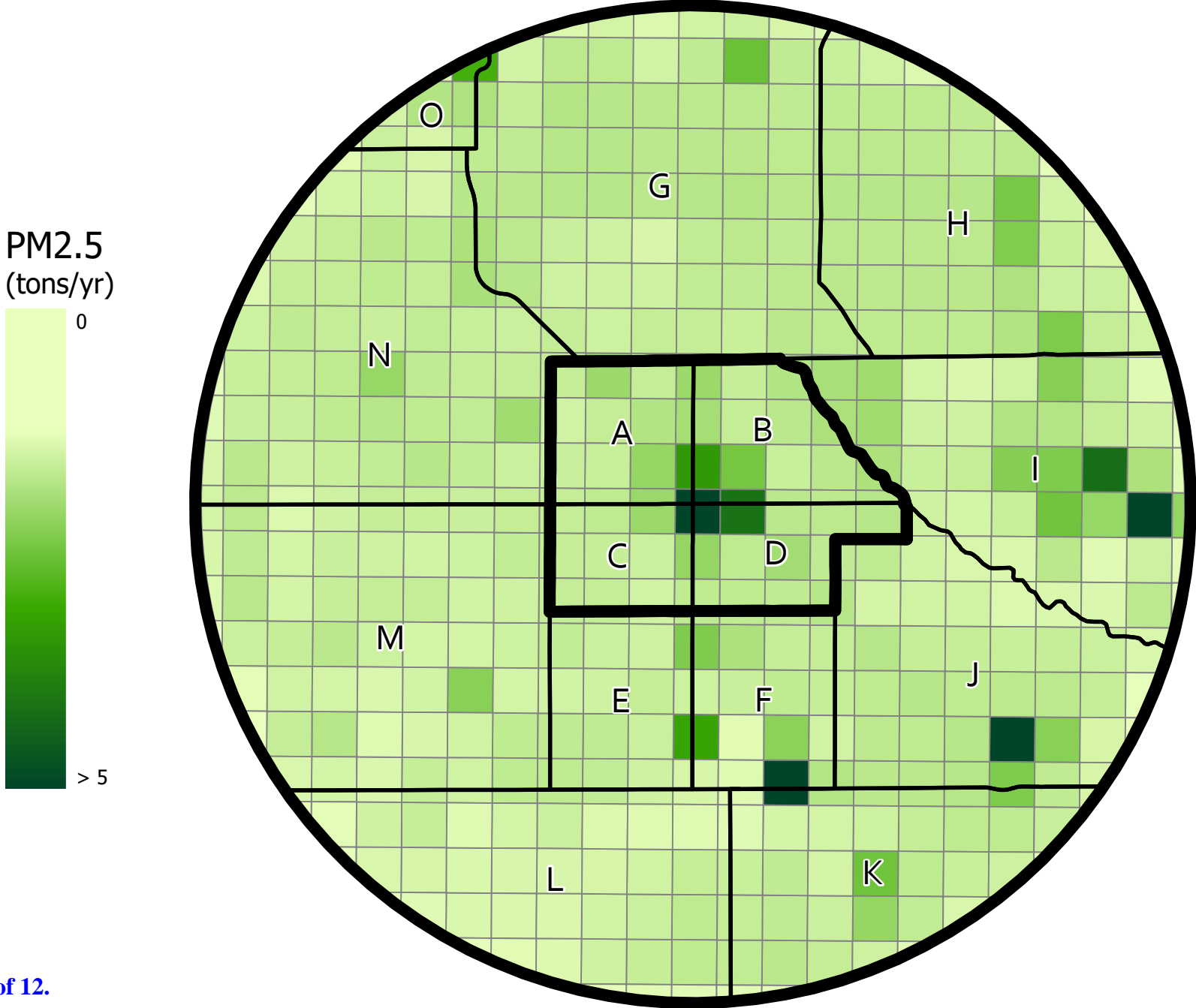
# NOx Emissions

*Emissiones de NOx*



# PM2.5 Emissions

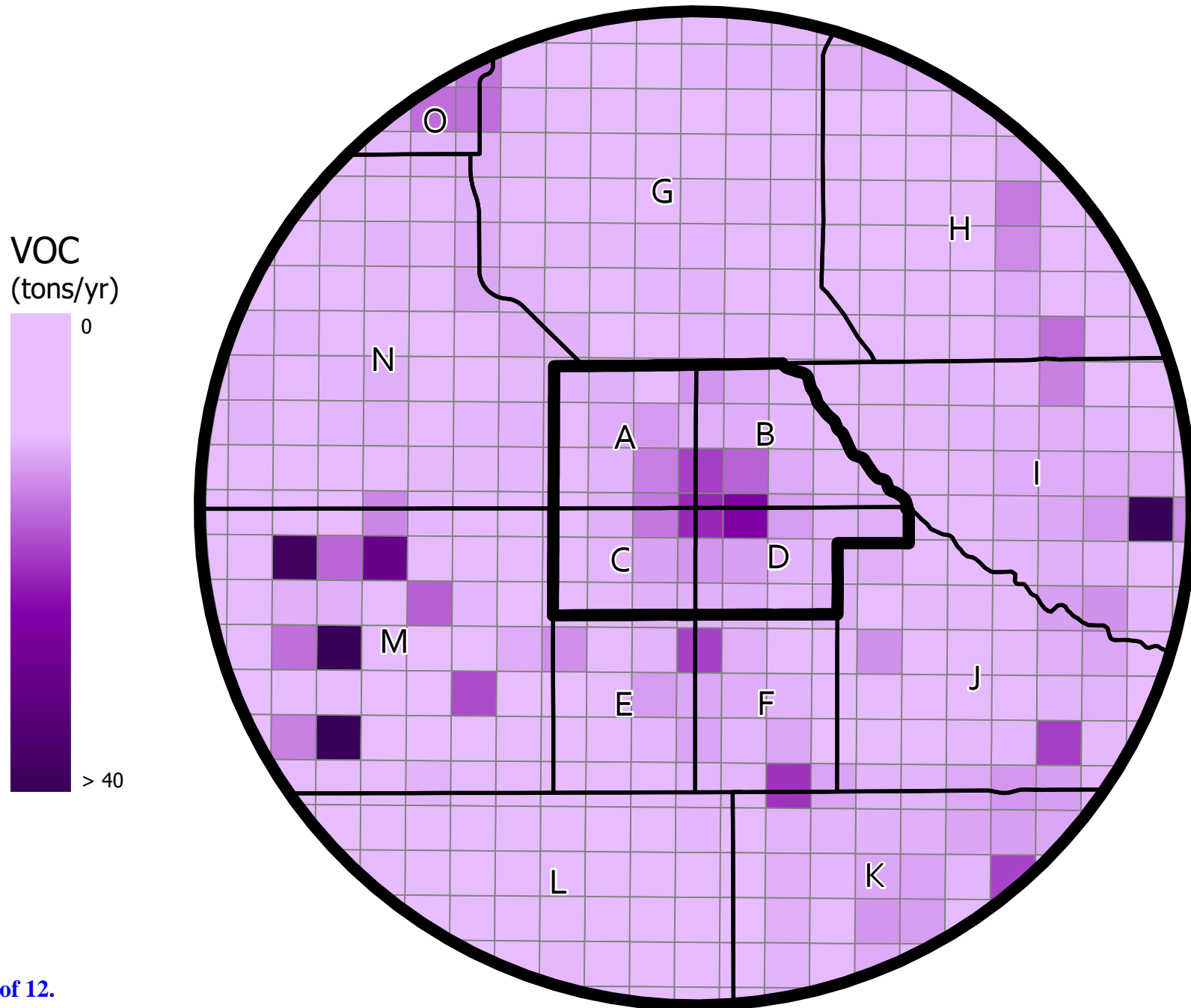
*Emissiones de PM2.5*



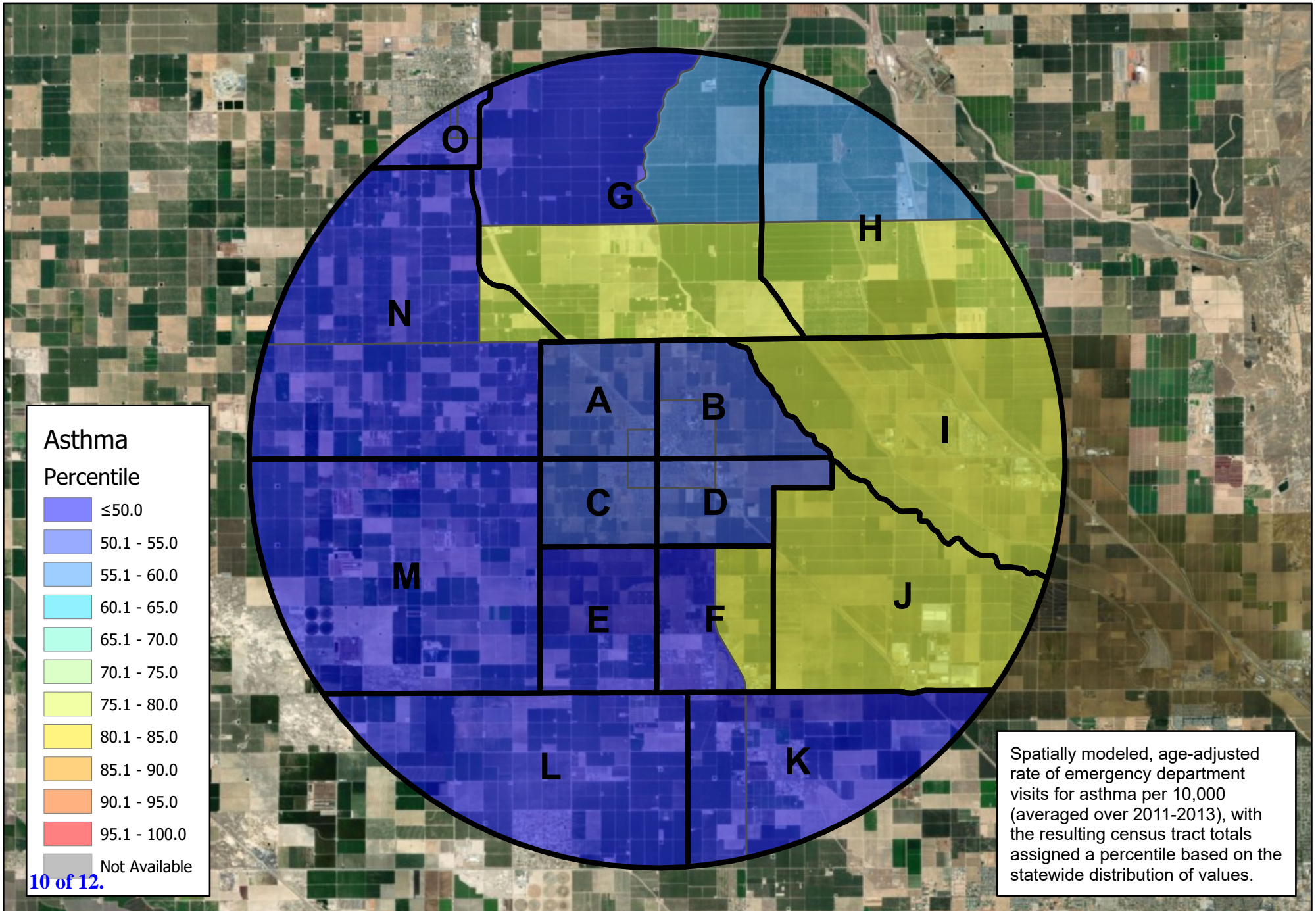


# VOC Emissions

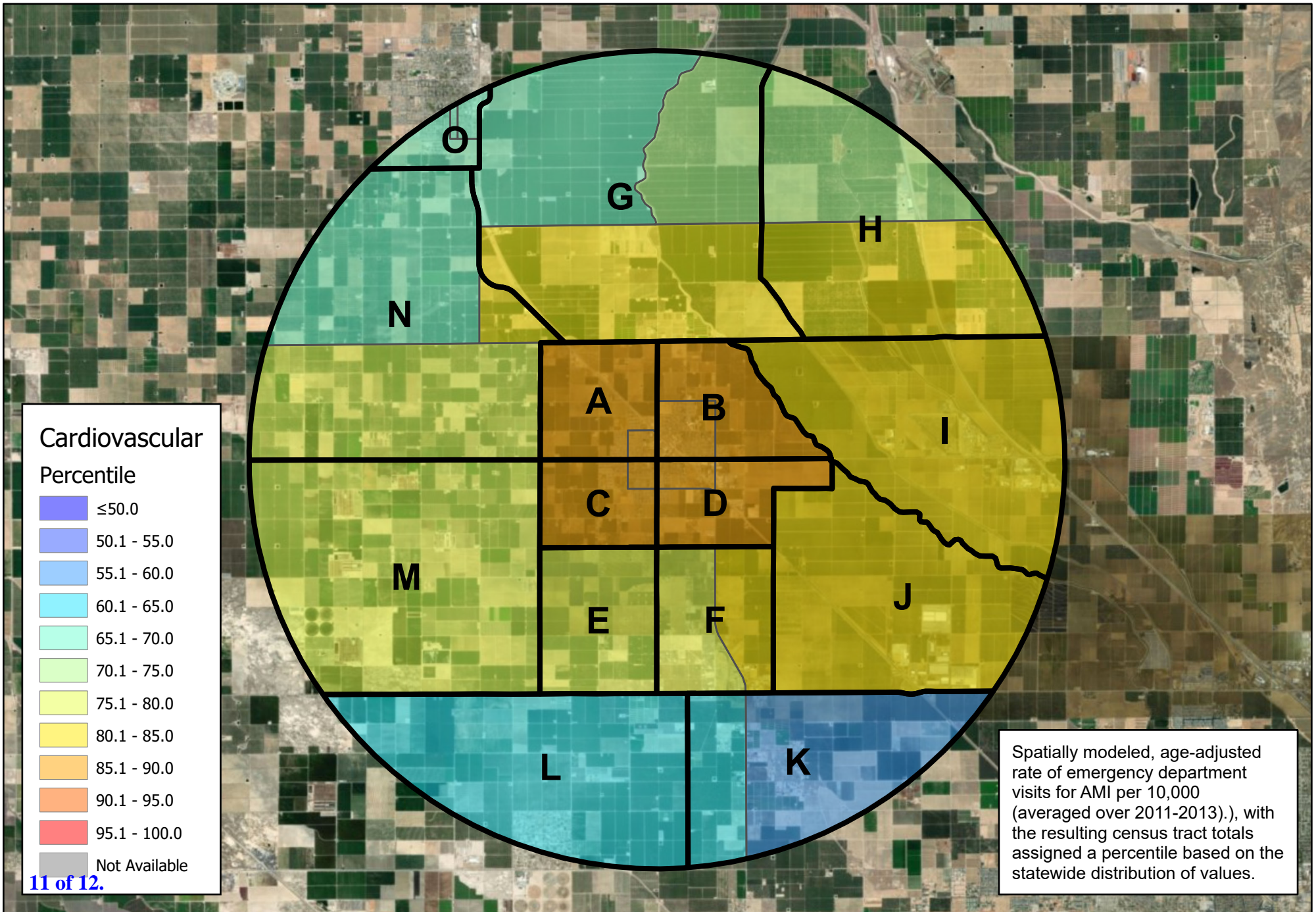
*Emissiones de VOC*



# CalEnviroScreen 3.0 - Asthma Percentile



# CalEnviroScreen 3.0 - Cardiovascular Percentile



# CalEnviroScreen 3.0 - Low Birth Rate Percentile

