

South Central Fresno Community Air Monitoring Subcommittee Meeting

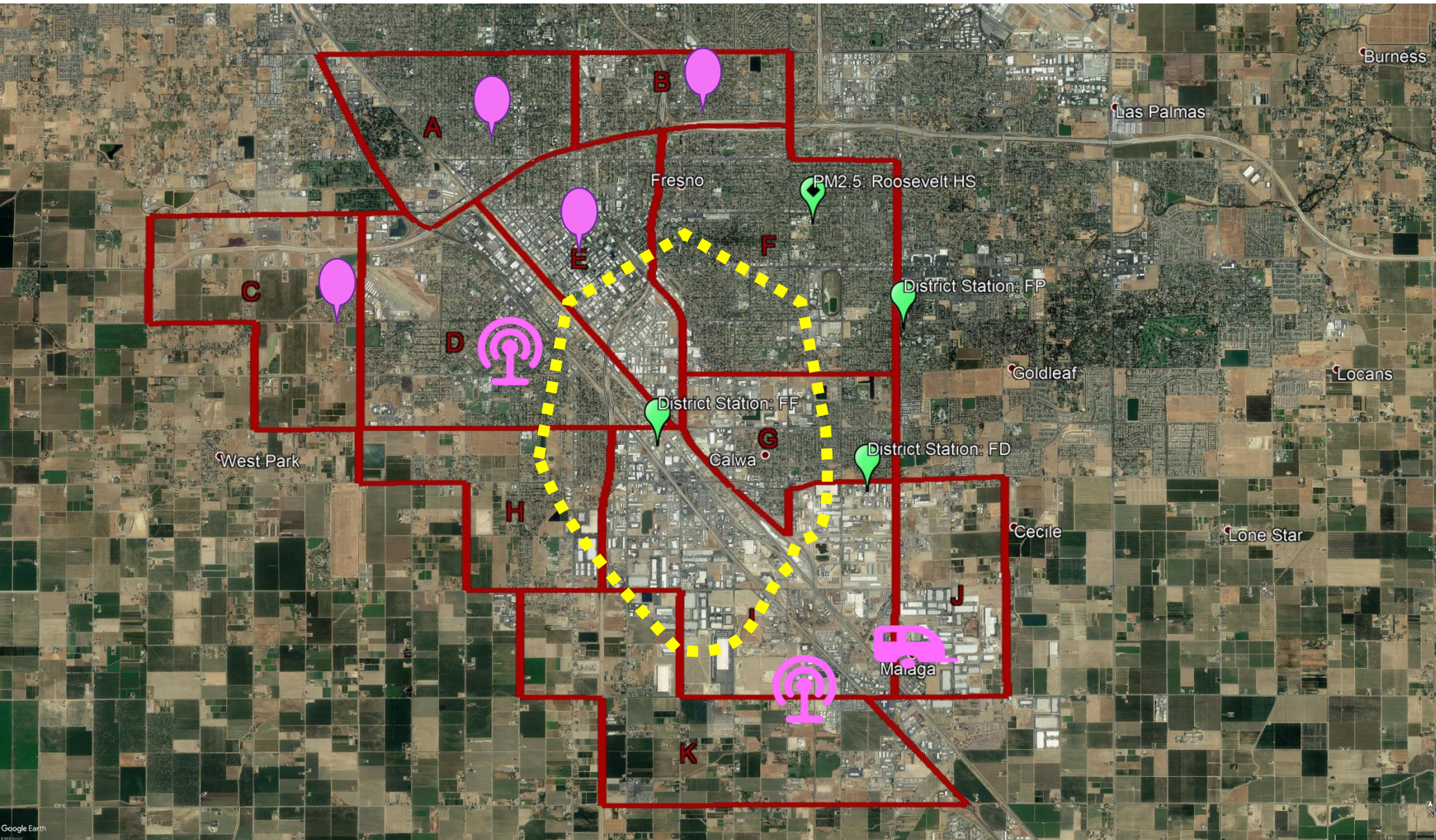
June 12, 2019

San Joaquin Valley Air Pollution Control District

Platform Capabilities for Initial Community Air Monitoring Network

		Platform			
Pollutants	Example Sources	Trailer (x1)	Van (x1)	Compact System (x2)	Stand Alone PM2.5 (x4)
PM2.5	Mobile, industry, residential	x	x	x	x
Black Carbon	Mobile, industry, residential	x	x	x	
NO, NO2, NOx	Mobile, industry	x	x	x	
CO	Mobile	x	x	x	
Ozone	Regional, formed from VOC and NOx	x	x	x	
SO2, H2S	Industry	x	x	x	
VOC (BTEX)	Gasoline distribution and marketing	x	x	x	
VOC Auto GC/MS	Industry, mobile	x			
Toxics	Industry, mobile	x	x		
Meteorology		x	x	x	

Recommended Locations of Current Resources



Stand-Alone PM2.5



Compact Air Monitoring System



Trailer



Mobile Monitoring Van

- Drive on a regular schedule throughout entire boundary all year
- Respond to community concerns



- Recommended focus route

Contact Information

Contact the Valley Air District at:

AB617@valleyair.org

Fresno office (559) 230-6000

Modesto office (209) 557-6400

Bakersfield office (661) 392-5500

Jaime Holt Cell: (559) 309-3336

For information visit:

www.valleyair.org/community

www.valleyair.org

Follow us on
social media



Use the Valley Air
App for the latest
air quality info.



South Central Fresno Community Emissions Reduction Program (CERP) Development

June 12, 2019

Jessica Coria, Senior Air Quality Specialist
San Joaquin Valley Air Pollution Control District

Community Emissions Reduction Programs

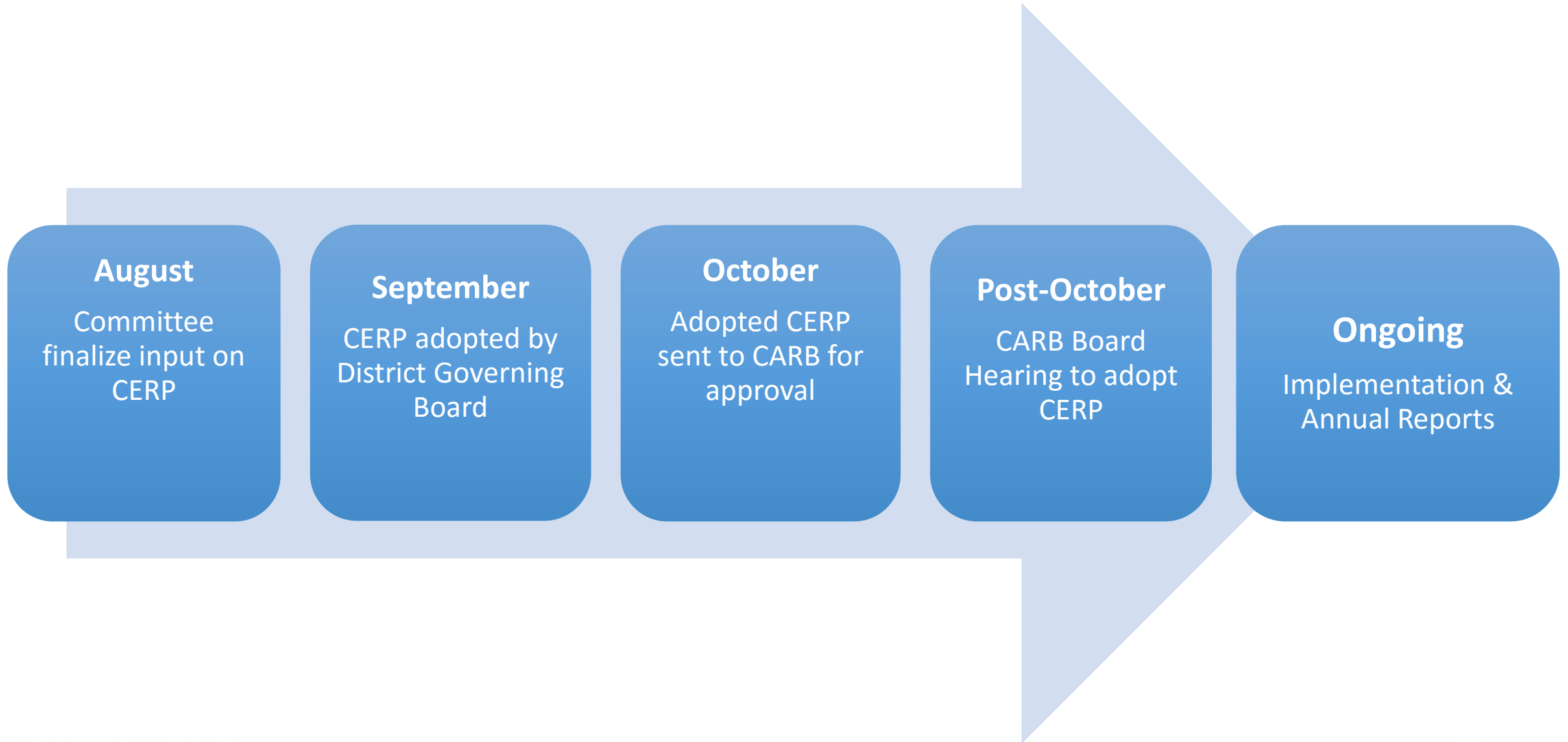
- Guidance on CERPs included in CARB's Community Air Protection Blueprint: Appendix C
- Elements of a CERP include:
 - Understanding the Community
 - Community partnerships & public engagement
 - What are the Community air quality challenges and concerns?
 - How can we collectively address these challenges and concerns?
 - Implementation schedule
 - Enforcement plan
 - Metrics to track progress over time

South Central Fresno Community Emissions Reduction Program
Draft Outline for Steering Committee Review

April 10, 2019

- I. Executive Summary
- II. Introduction
 - A. Background about AB617 and the Community Air Protection Program
 - B. Health Based Air Quality Objectives
- III. Understanding the Community
 - A. Community Profile
 - B. Technical Assessment to Understand Community Pollution Impacts
- IV. Community Partnerships and Public Engagement
 - A. Community Steering Committee Information
 - B. Steering Committee Meetings
 - C. Public Outreach
- V. Identifying and Evaluating Community Air Quality Concerns
 - A. Summary of Community Emission Sources
 - B. Community-Identified Air Quality Priorities
 - C. Evaluating Air Quality Impacts
- VI. Targets and Strategies
 - A. Emissions Reduction Targets & Goals
 - B. Mitigation Strategies for Sensitive Receptors
 - C. Pollution Reduction Strategies
 1. Incentives-Based Strategies
 2. Regulatory Strategies
 - a) Rules and Regulations
 - b) Facility Health Risk Reduction Program under AB2588
 - c) Enforcement Strategies
 3. Partnering with Other Agencies
 - a) Land Use Strategies
 - b) Transportation Strategies
 - c) Other Agency Partners
 - D. Implementation Schedule
- VII. Enforcement Plan
 - A. Enforcement History for Community Sources
 - B. Compliance Strategies for Achieving Emission Reduction Targets
- VIII. Metrics to Track Progress
 - A. Metrics to Track Progress in Annual Reports
 - B. Metrics for Five-Year Milestone Evaluation

Upcoming CERP Deadlines



CERP Development Process



Ways to Reduce Air Pollution

- Incentive-based Pollution Reduction Strategies
 - New/enhanced opportunities to promote effective clean air technologies and practices
- Regulatory Strategies
 - Must be taken through a public process, extensive existing stationary and mobile source regulations
- Outreach & Engagement
 - Public education about actions residents and businesses can take to further reduce air pollution and associated health benefits
- Partnership with Other Agencies
 - CARB, Cities, Counties, Department of Pesticide Regulation, etc.
- Mitigation Strategies (indoor air filtration, vegetative barriers, etc.)

Community-Driven Emission Reduction Strategies

- Extensive input and feedback from the Committee has resulted in the formulation of draft list of Emission Reduction Strategy Concepts
 - Will be developing and refining these strategies with Committee member suggestions and recommendations
- World Café Style Conversations
 - Answer questions about existing control programs for different source categories of concern
 - Discuss initial draft strategies
 - Brainstorm additional strategy ideas
- Numbers in “Table” column of worksheet correspond with the table to visit for more information & discussions about the particular source
- Follow with full-committee discussion on ideas considered during World Café Style exercise and other recommendations

Contact Information

AB 617 contacts and information at Valley Air District:

AB617@valleyair.org

Jaime Holt Cell: (559) 309-3336

www.valleyair.org/community

General Air District Contacts and Information:

Fresno office (559) 230-6000

Modesto office (209) 557-6400

Bakersfield office (661) 392-5500

www.valleyair.org

Follow us on
social media



Use the Valley Air
App for the latest
air quality info.

