

Implementation of CERP Enforcement Measures in Shafter Community

AB 617 Community Steering Committee Meeting
October 12, 2020

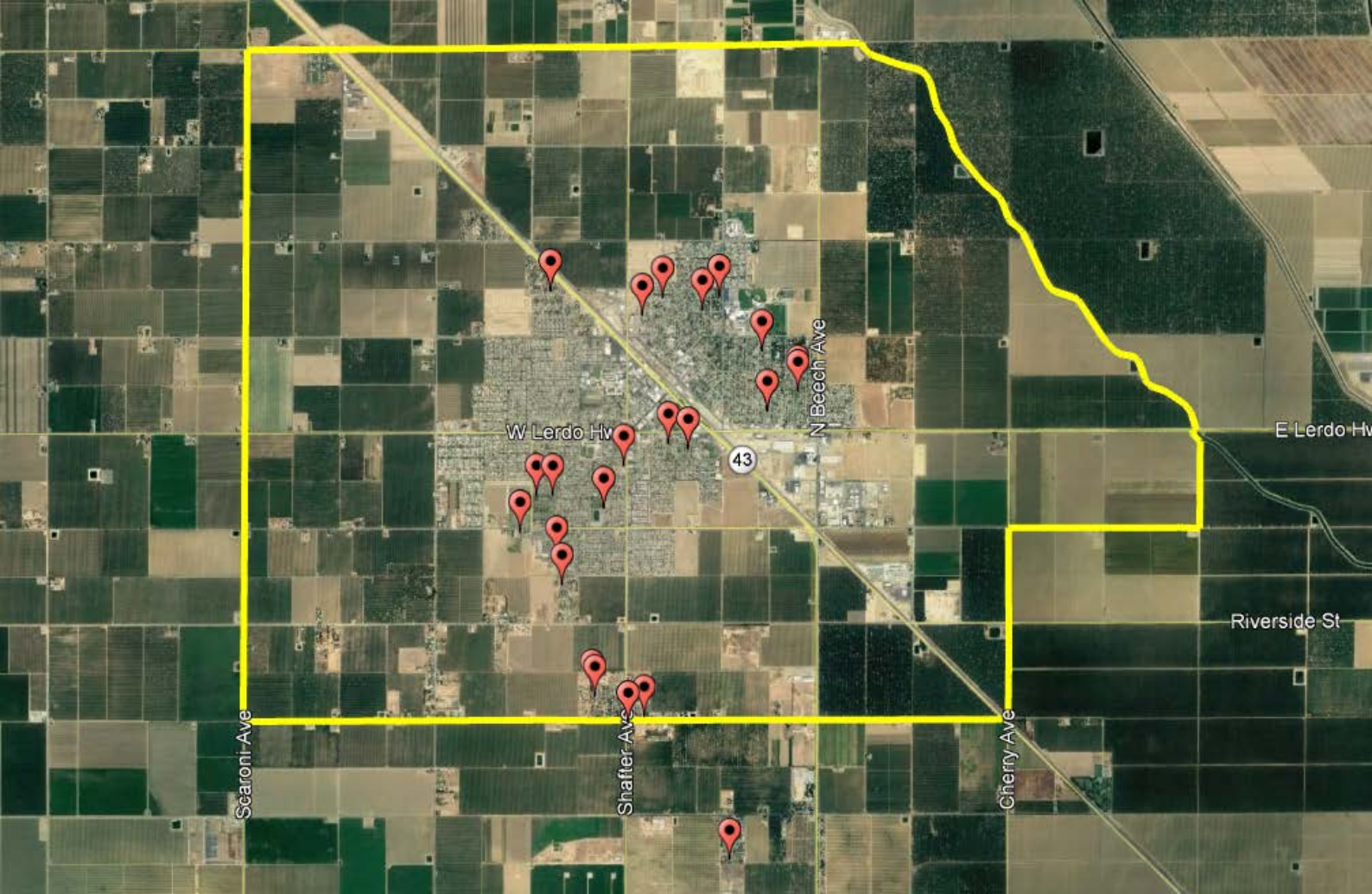
CERP Enforcement Measures in Shafter Community

- RB.3 Enhanced Enforcement of Wood Burning Curtailments
- RB.5 Enhanced Enforcement to Reduce Illegal Burning of Residential Waste
- HD.3 Enhanced Enforcement of Statewide Anti-Idling Regulation
- IS.3 Enhanced Inspection Frequency of Stationary Sources
- IS.4 Pilot Training Program for Conducting Self-Inspections at Gas Stations

Enhanced Enforcement of Wood Burning Curtailments

- Enforcement of residential wood burning curtailments in District Rule 4901 to limit localized PM 2.5 impacts
- Effective each year from November 1 – February 28/29
- Dedicated 4 hours of enforcement in the Shafter Community on each declared curtailment day
- During 2019/2020 season
 - 1 public complaint responded to
 - 23 violations found
- CSC Feedback
 - Where and when should the District focus future enforcement?

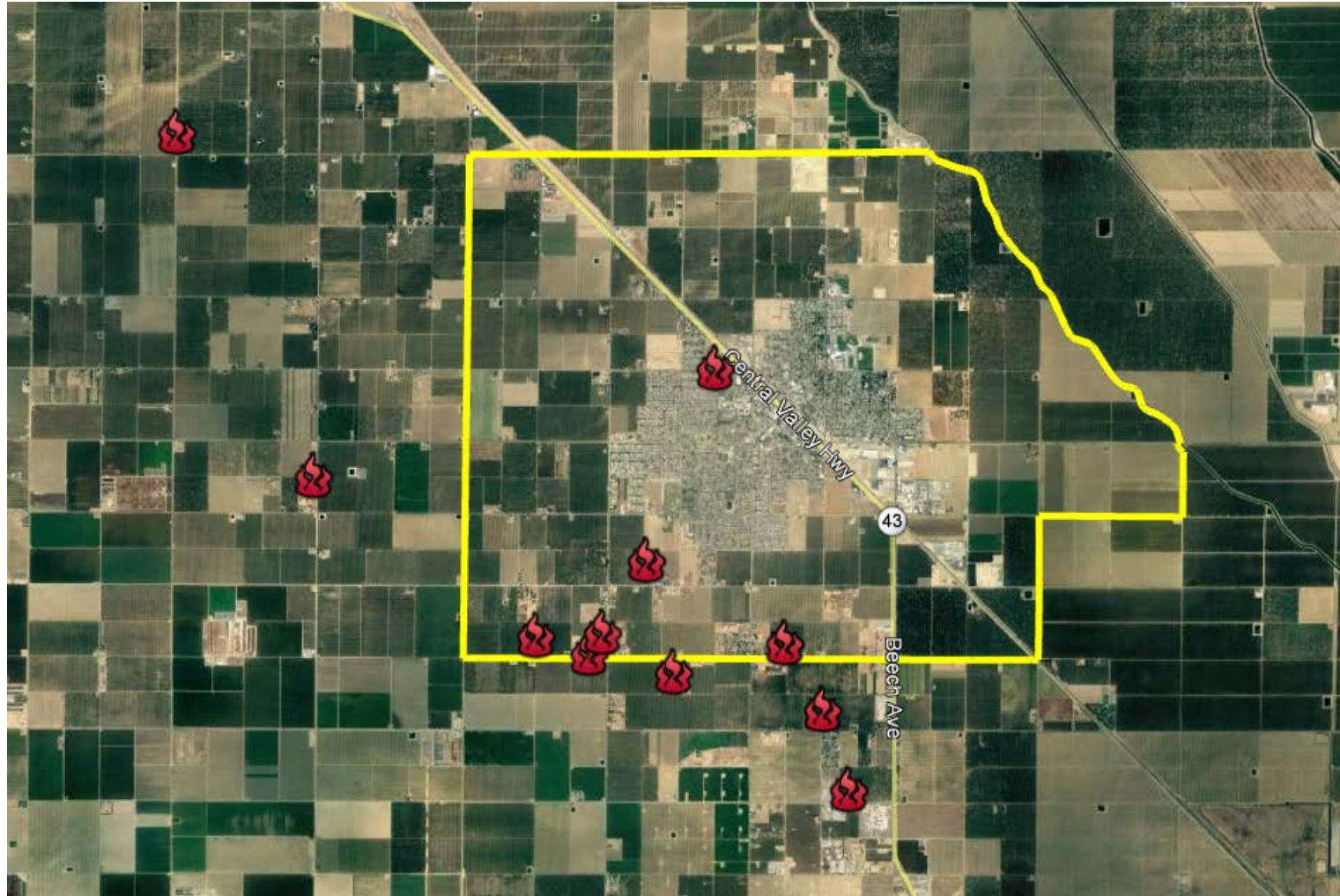
2019/20 Residential Wood Burning Violations



Enhanced Enforcement to Reduce Illegal Burning of Residential Waste

- Enforcement of District Rule 4103 and CCR 93113 requirements to limit the potential for localized PM 2.5 and toxic impacts from illegal open burning of residential waste
- District inspectors conducted targeted enforcement efforts during each of the first three quarters of 2020
- During first half of 2020
 - 7 public complaints of open burning responded to
 - 12 open burning violations found
- CSC Feedback
 - Where and when should the District focus future enforcement?

Open Burning Violations (1st & 2nd Quarter 2020)



Enhanced Enforcement of Statewide Anti-Idling Regulation

- District enforcement, in partnership with CARB, of the State anti-idling regulation for heavy-duty diesel trucks and busses to reduce localized PM 2.5 and toxic air quality impacts
- District inspectors have conducted targeted enforcement efforts during each of the first three quarters of 2020
- Primarily focused around industry with frequent truck traffic
- CSC Feedback
 - What are some idling “hot spots” where the District can focus future enforcement efforts?
 - Are there certain times of day when idling tends to occur?

Enhanced Inspection Frequency of Permitted Stationary Sources

- To limit the potential for localized air quality impacts due to a failure to comply with emission standards established by District permits, rules, or regulations
- Increased frequency of inspections at each permitted facility within the Shafter community that has had an emissions violation in the past three (3) years
- Those facilities will be inspected at least twice per year until four (4) consecutive inspections without an emission violation
- During the first half of 2020 (Jan – Jun)
 - 19 Enforcement actions taken

Pilot Training Program for Conducting Self-Inspections at Gas Stations

- Providing hands-on training to gas station operators in the community to limit the potential for air quality impacts from vapor recovery defects at gasoline dispensing stations
- The District has developed a training outline for instructing gas station operators on conducting thorough self-inspections of the vapor recovery systems at their stations to aid in the identification and timely repair of vapor recovery system defects
- Hands-on training is currently on hold due to COVID-19 social distancing requirements

Response to Public Complaints in Shafter Community

- Complaints can be reported to the District by:
 - Telephone: (800) 926-5550
 - The District website: www.valleyair.org
 - Through the District mobile app
- During the first half of 2020, the District responded to 12 public complaints in the Shafter Community for residential open burning, fugitive dust, odors, and unpermitted equipment
- Five of those complaints resulted in enforcement action being taken