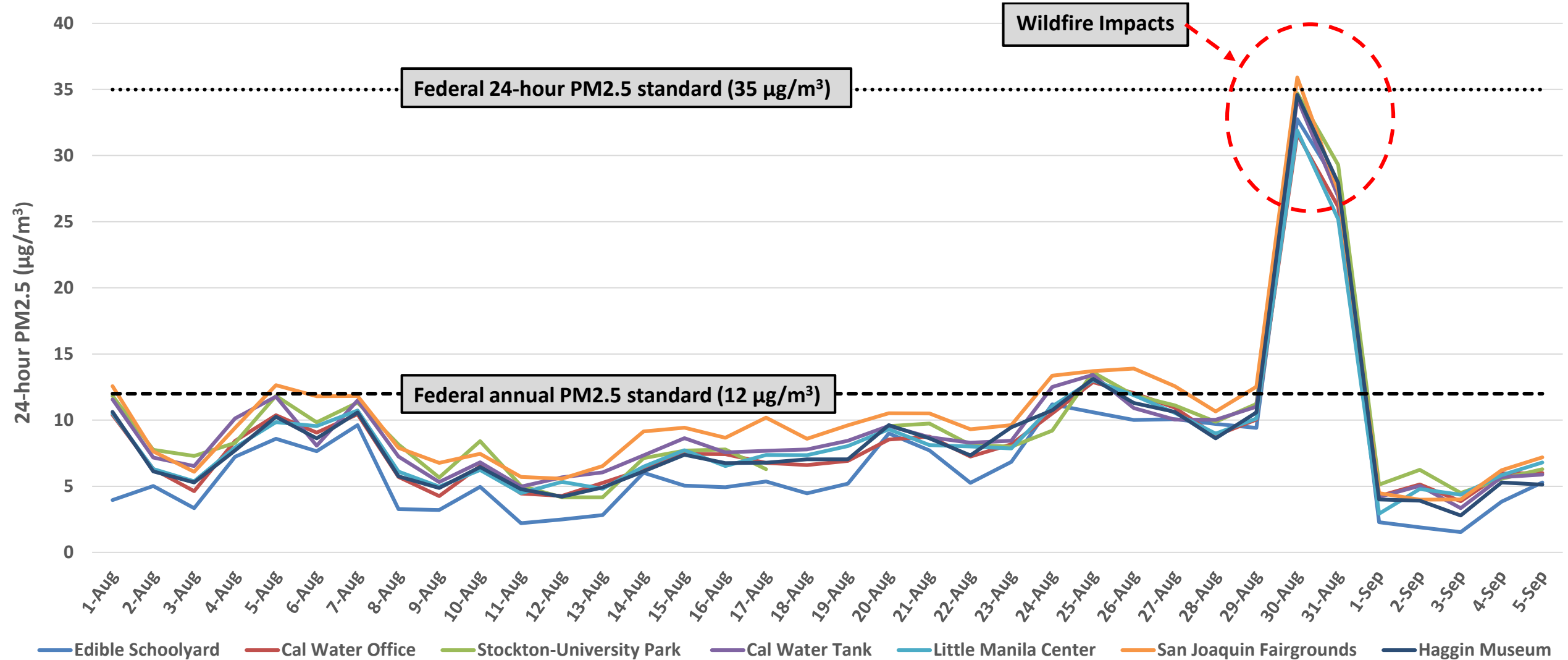


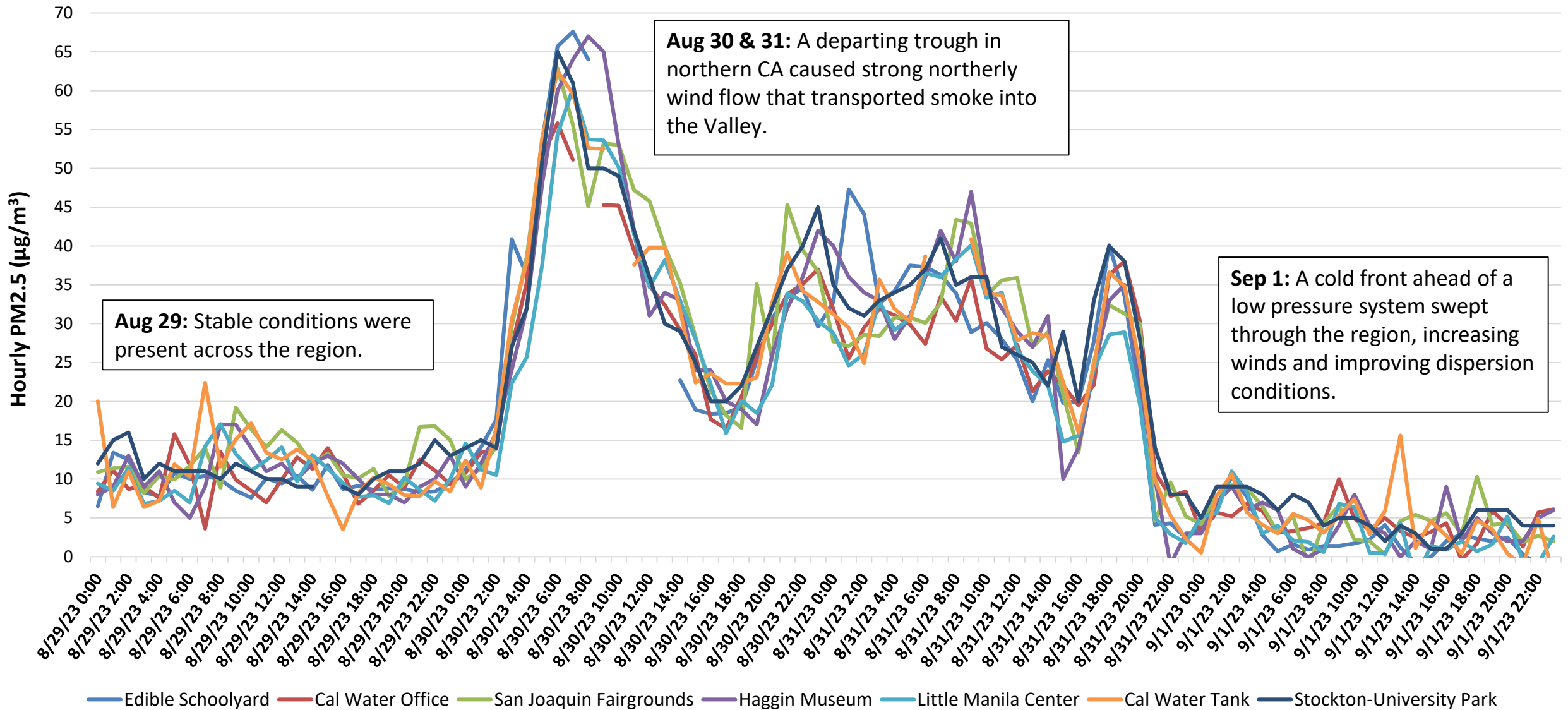
Update on Smoke Impacts from August 2023 Wildfires

Stockton CSC Meeting
September 6, 2023

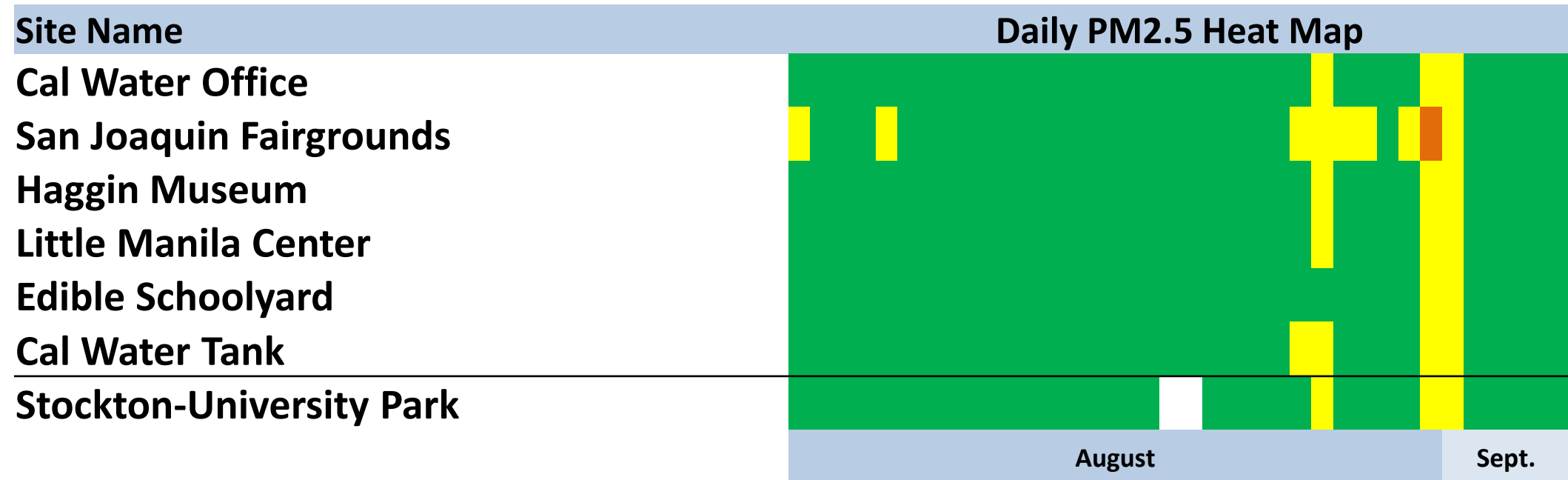
Daily PM2.5 Trend for August



Hourly PM2.5 Trend for August 30 and 31



PM2.5 Daily Average Concentration Comparison



Levels of Concern	Daily Concentration (µg/m3)	Description of Air Quality
Good	0-12	Air Quality is Satisfactory, and air pollution poses little or no risk
Moderate	12.1- 35.4	Air quality is acceptable. However there may be a risk for some people, particularly those who are unusually sensitive to air pollution
Unhealthy for Sensitive Groups	35.5 -55.4	Members of sensitive groups may experience health effects. The general public is less likely to be affected.
Unhealthy	55.5 – 150.4	Some members of the general public may experience health effects; members of sensitive groups may experience more serious health effects.
Very Unhealthy	150.5-250.4	Health Alert: The risk of health effects is increased for everyone