

AB 617 Implementation in the San Joaquin Valley: Community Emission Reduction Program Development

San Joaquin Valley Air Pollution Control District
August 28, 2019

webcast@valleyair.org

AB 617 Overview

- In September 2017, the State Legislature and Governor agreed to legislative package extending State Cap and Trade program:
 - Directed significant funding to emission reduction projects in disadvantaged communities
 - Established new AB 617 Community Air Protection Program
- AB 617 requires:
 - Evaluation of rules applying to industrial sources subject to the state Cap-and-Trade Program
 - Statewide enhancement of emissions inventory reporting and map-based online display of emissions data
 - Community Air Quality Monitoring Plans and Community Emission Reduction Programs for selected disadvantaged communities

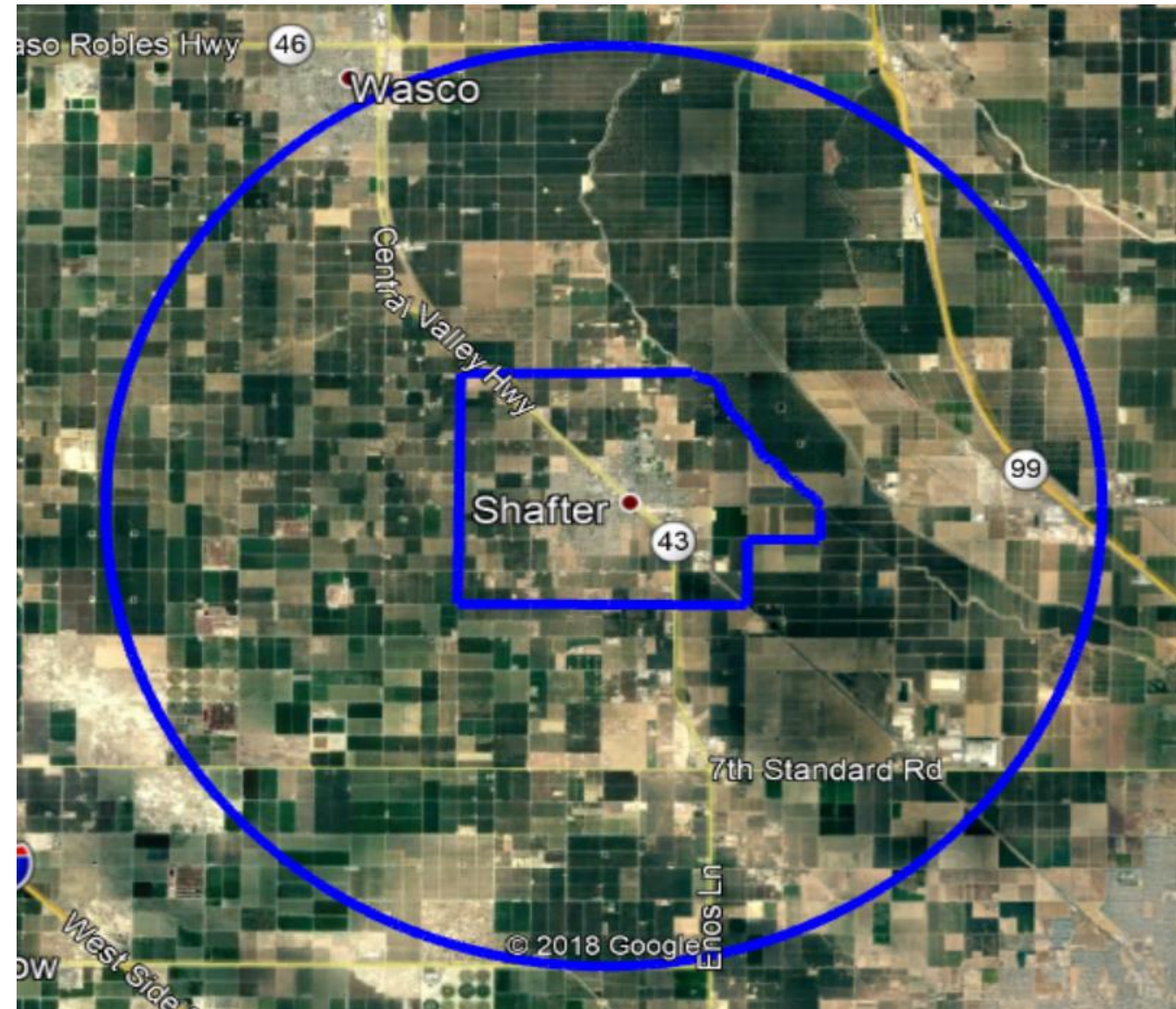
AB 617 Brings New Resources and Attention to Valley Communities

- AB 617 established to further address community-level air quality issues, building on long-standing regional clean air efforts
 - Provides for investment in impacted communities to reduce air pollution
- State (CARB) tasked with selecting communities for action every year
- Air districts, working with community steering committees, must develop and implement community air quality monitoring plans and Community Emission Reduction Programs (CERPs) for each community
- Valley successful in securing new clean air resources for communities throughout the Valley
 - \$75 million last year for “early actions” to reduce air pollution, invested in clean air projects throughout Valley disadvantaged communities
 - \$60 million in new funding to be received later this year to be prioritized in AB 617 communities

Community Selection

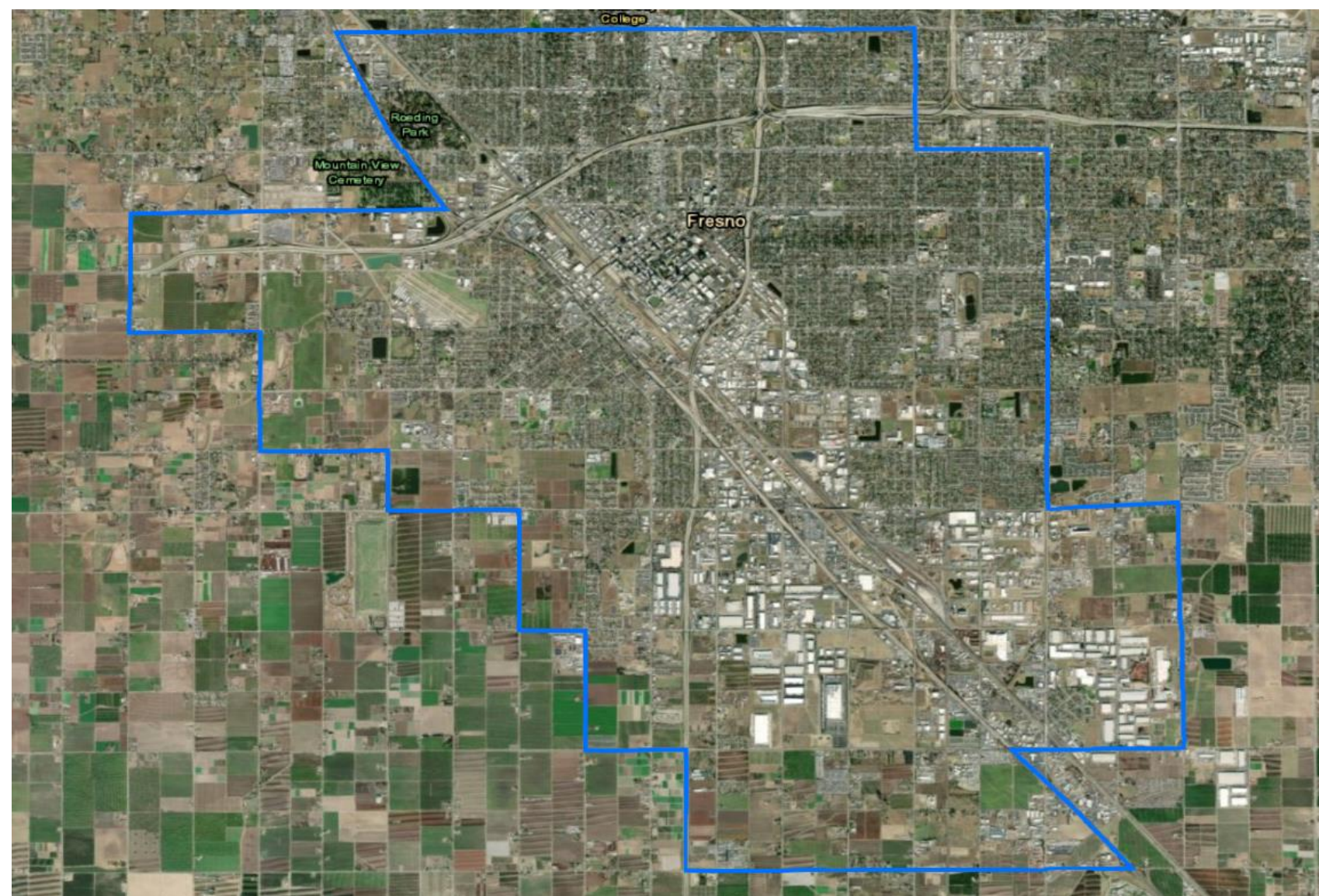
- In September 2018, CARB selected first-year communities under the AB 617 process
 - 10 communities proposed statewide for initial year
 - In Valley, selected South Central Fresno and the City of Shafter
 - Third community nominated by District Governing Board (North Bakersfield) not selected by CARB due to resource constraints
- Community Steering Committees established to help advise CERP development with community input
 - Majority of committee must be residents of community
 - Also includes workers and business owners, community groups, city and county representation

Shafter Community



- Selected by CARB to represent rural, less dense (small city) residential areas of Valley
- 14.9 square miles
- Population: 19,600
- 7-mile radius added outside community to look for sources that might impact community
- CalEnviroScreen model scores
 - 90th percentile overall
 - 98th percentile for poverty
 - 84th percentile pollution burden

South Central Fresno Community



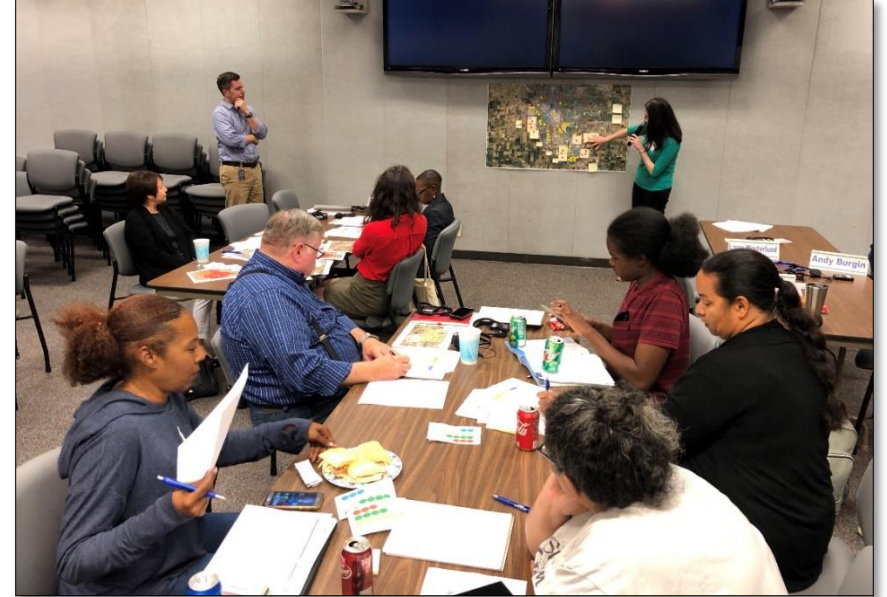
- Selected by CARB to represent urban residential areas of SJV
- Boundary expanded after consultation process with committee and CARB: now includes southwest Fresno, Daleville, industrial triangle
- 35 square miles
- Population: >150,000
- CalEnviroScreen scores
 - 97-100th percentile overall
 - 92-99th percentile for poverty and unemployment
 - 99-100th percentile for pollution burden

Community Steering Committees

- Steering Committees formed in each community to act in an advisory capacity to District, providing local knowledge and representation
 - Majority of committee is area residents, as well as business representatives, ex officio governmental representatives
- Interactive meeting structures with diverse topics to build capacity
 - Educational seminars about existing District, CARB, and other agency programs
 - Development and exploration of community inventories and mapping tools
 - Group exercises to understand community concerns about local air quality sources
 - Prioritization of potential strategies to implement in community
- Community steering committees will continue to play important role as the CERPs are implemented in the South Central Fresno and Shafter communities

Steering Committee Meetings

- The District worked with the steering committees to clearly set out each committee's goals, process, and structure, including:
 - Committee objectives
 - Roles and responsibilities
 - Meeting procedures
 - Meeting frequency; meeting dates, times, and locations to ensure accessibility
 - Deliberative process that ensures meaningful, diverse, and balanced participation
- Steering Committee Meetings
 - Dozens of meetings held in Shafter and South Central Fresno
 - Meetings are managed by facilitator, and designed to provide for open and comprehensive discussion of topics
 - Meetings and meeting materials are bilingual in Spanish and English
 - Meetings held in evening to maximize opportunities for working families to attend



CERP Development: Required Elements

- CARB guidance requires that Community Emission Reduction Programs include the following elements:
 - Community description
 - Community partnerships established and public engagement efforts undertaken
 - Air pollution challenges facing the community
 - Measures to reduce emissions and exposure to air pollution
 - Implementation schedule for measures undertaken
 - An enforcement plan to ensure effective emissions reductions
 - Metrics to track progress over time

CERP Development: Identifying Community Air Quality Concerns

- Inventory of Community Emission Sources
 - Mobile, Area, Stationary
- Technical analysis of pollution sources impacting community
 - List of the key sources and source categories within and near the community
 - Online tools (emissions inventory, emissions modeling, air monitoring) to better define emissions sources of concern & potential controls
- Community-Identified Air Quality Priorities
 - Discussion of pollution concerns as indicated by Steering Committee members and the public

CERP Development: Understanding Local Sources and Community Air Quality Concerns

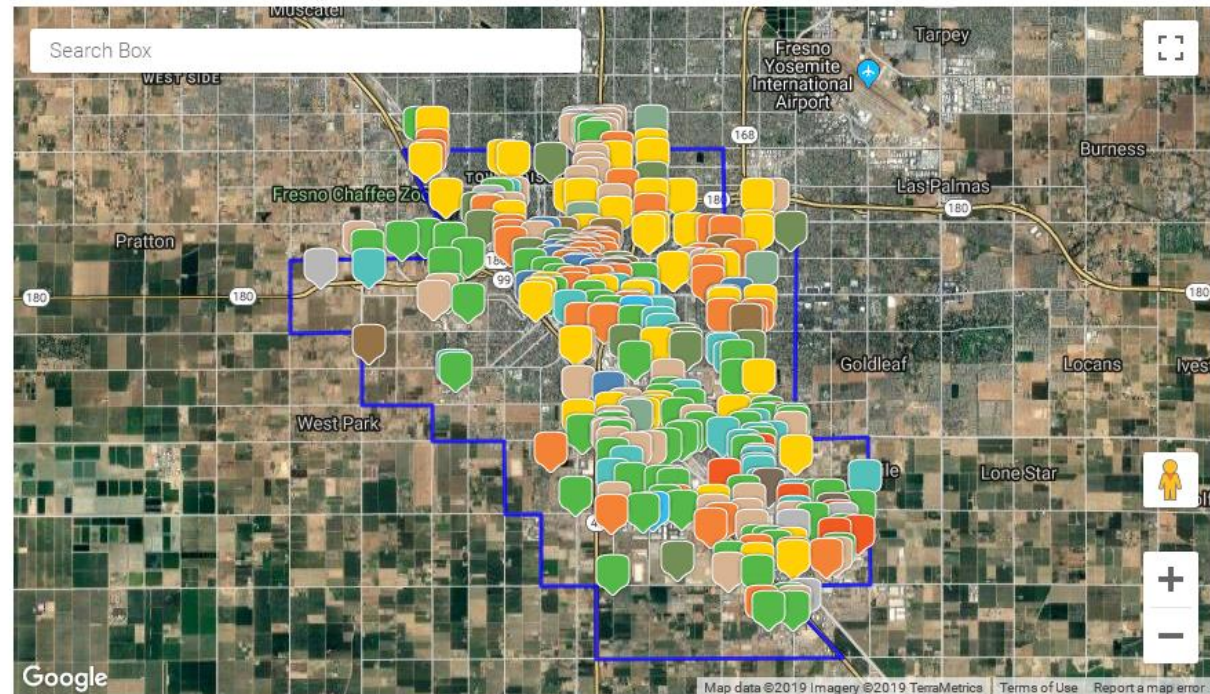
Stationary Sources

Legend:

PERMITTED SOURCES TYPES

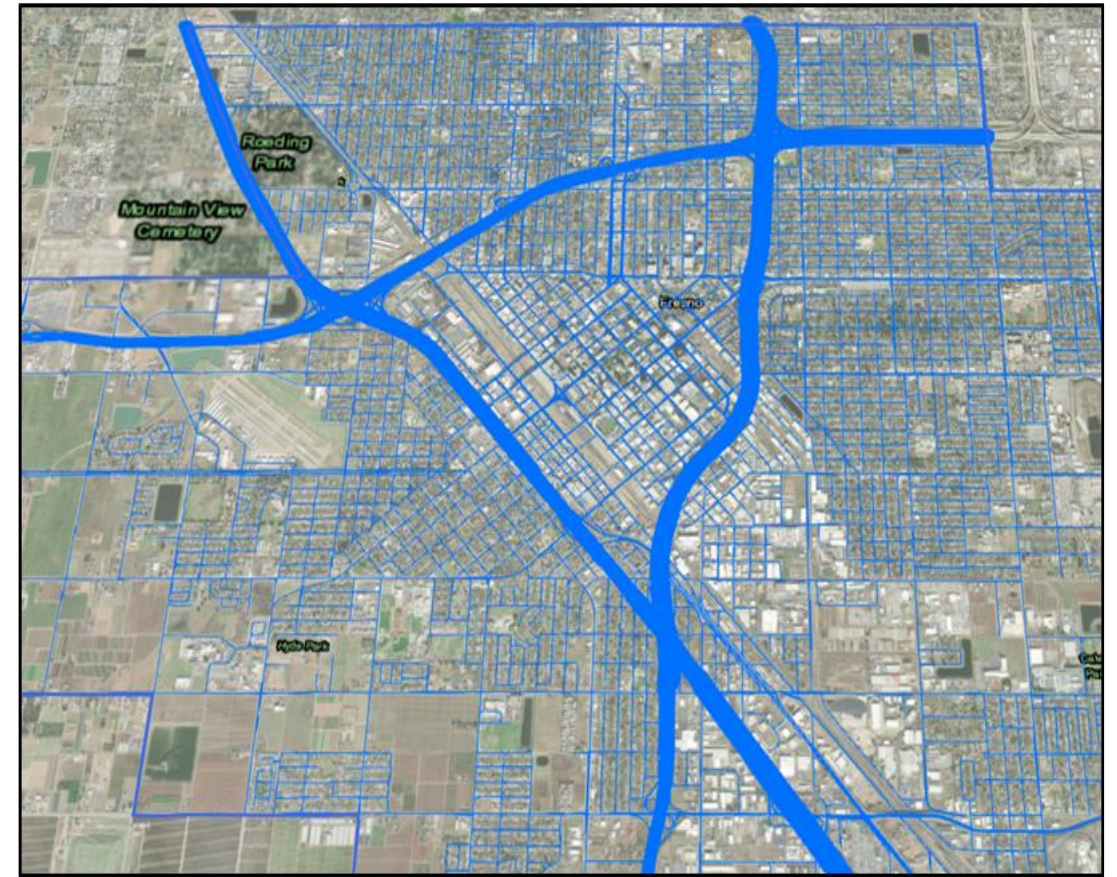
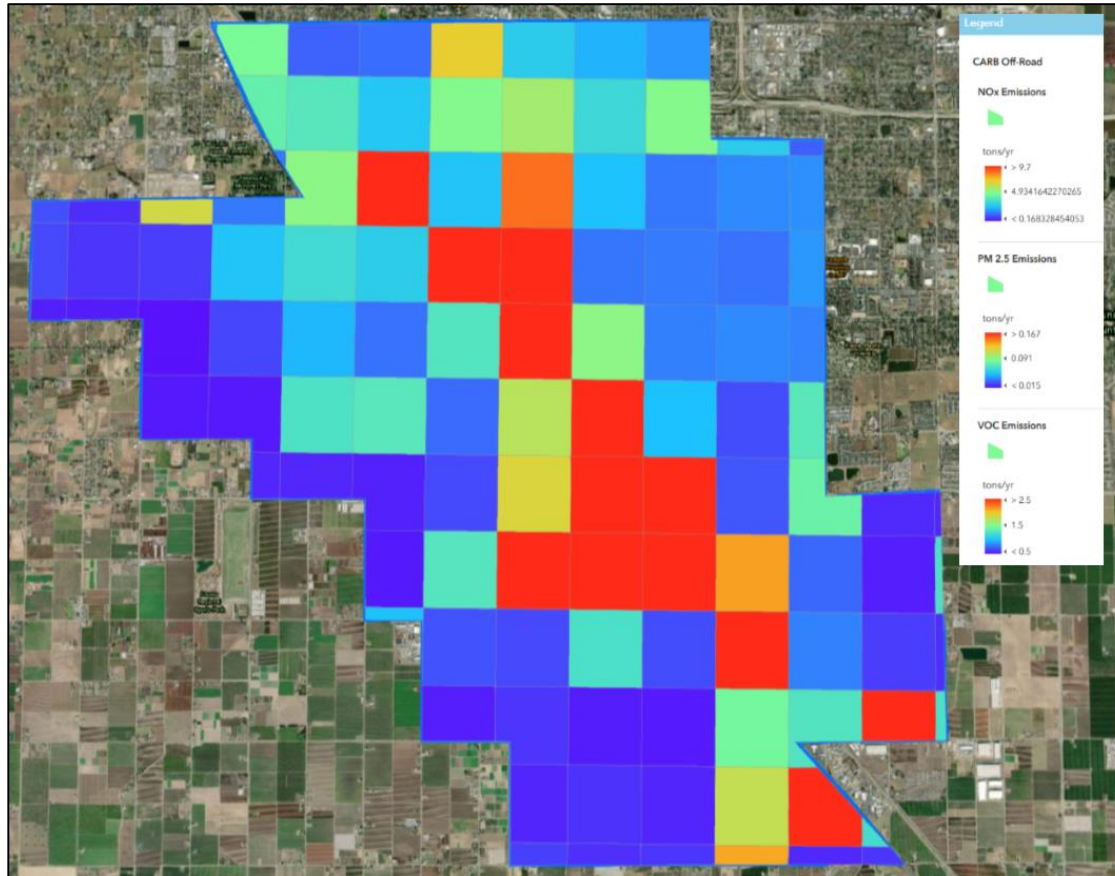
-  GOVERNMENT FACILITY
-  FERTILIZER FACILITY
-  OTHER FACILITIES
-  GASOLINE DISPENSING FACILITY
-  PUBLIC UTILITY & TELECOMMUNICATIONS
-  CONCRETE FACILITY
-  COATING & METAL WORKING FACILITY
-  FACILITY OUTSIDE BOUNDARY
-  HOSPITAL & MEDICAL OFFICES
-  MISC OFFICES & STORES
-  RESTAURANT FACILITY
-  POWER PLANT FACILITY
-  WOOD PRODUCTS
-  FOOD PROCESSING

Map:



CERP Development: Understanding Local Sources and Community Air Quality Concerns

Area and Mobile Sources



Community-Identified Air Quality Priorities

Sources of Concern: South Central Fresno



Heavy Duty Trucks



High Polluting & Idling Cars



Residential Wood Burning



Land-Use/Industrial Development



Illegal Burning



Industrial Processes

Sources of Concern: Shafter



Heavy Duty Trucks and Locomotives



Older/High Polluting Cars



Agricultural Sources



Oil and Gas Operations



Residential Wood Burning



Fugitive Dust



Urban Sources

Community-Focused Clean Air Strategies

- Community Emission Reduction Programs include wide variety of clean air measures designed through cooperative community-driven process
- Incentive-based Strategies
 - New/enhanced opportunities to promote effective clean air technologies/practices
- Regulatory Strategies
 - Requires public process, extensive existing stationary and mobile source regulations
- Outreach & Engagement Strategies
 - Public education about actions residents and businesses can take to further reduce air pollution and associated health benefits
- Partnerships with Other Agencies
 - CARB, Cities, Counties, Department of Pesticide Regulation, etc.
- Exposure Reduction Strategies (air filtration systems for schools, home weatherization, vegetative barriers, etc.)

Heavy Duty Mobile Sources

- Incentive measures to replace heavy-duty trucks, locomotives, yard trucks, and truck refrigeration units with clean-engine technologies
- Support for alternative fuel fueling stations
- Charging infrastructure to reduce idling
- Enhanced enforcement of Statewide anti-idling regulation
- Funding for electric school buses, and transit buses (Dial-a-ride for Shafter)
- Interest from communities in rerouting heavy-duty trucks-partnerships with Cities, Counties to address these concerns
- Statewide measures will also achieve reductions



Passenger Cars

- Host Tune-In Tune-Up Events within Community
- Enhanced Access/Outreach to Incentives through Drive Clean
- Car Share Programs & Ride Share Programs
- Incentives for EV Infrastructure
- Increased Educational Training for EV Mechanics
- Statewide measures will also achieve community-specific reductions



Agricultural Sources

- Funding proposed in Shafter CERP to incentivize Low-Dust Nut Harvesters; Electric Dairy Feed Mixing Equipment; Clean-engine technology tractors; electric agricultural pump engines
- Shafter community expressed interest in promoting implementation of conservation tillage practices on farms, and Alternative Manure Management Strategies at dairies
- Alternatives to Agricultural Burning (chipping/soil incorporation)
- Pesticide Measures (CARB and DPR)



Industrial Sources

- Incentive funding to install advanced control technologies, beyond regulatory requirements, at stationary sources that would not otherwise be feasible
 - Continued Steering Committee input during program guideline development and project review selection
- Enhanced enforcement measures for facilities found to be in noncompliance of air quality regulations
- Facility Risk Reduction Audits under AB 2588 (Air Toxics “Hot Spots” Program)
- Training for gasoline dispensing facility operators on self-inspections
- Expedited review of District rules to ensure they meet or exceed BARCT with schedule adopted by District Governing Board in December, 2018
- Shafter community interest in oil and gas facilities - amendment of District Rule 4311 (Flares)
- South Central Fresno measures for biomass facilities, glass manufacturing, and chrome plating operations

Residential/Urban Sources

- Increased outreach and access to incentives for replacing wood burning devices with natural gas or electric devices
- Increased enforcement of residential wood burning curtailments
- Education/outreach to reduce illegal trash burning
- Incentives for residential and commercial lawn and garden equipment
- Targeted outreach and incentives to control commercial underfired charbroiling emissions
- Shafter community interest in residential solar
- SC Fresno interest in enhanced enforcement of construction Reg. VIII requirements



Reducing Exposure for Sensitive Receptors

- Air filtration systems for community schools
- Indoor air quality improvement measures
- Urban greening
- Partnerships to install vegetative barriers at pollution sources of concern
- Anti-idling measures near schools, medical centers, residences
- Increased enrollment in HAL Schools program



Outreach & Partnerships with Other Agencies

- Targeted outreach to educate community residents about the availability of funding, RAAN, regulatory requirements
- Continued advocacy to bring state funding to AB 617-selected communities
- Community interest in land use-focused strategies
 - Active transportation measures, truck rerouting, zoning, setbacks
- Other agencies critical partners to address community concerns and suggestions
 - Cities, Counties, transportation planning organizations, CARB, DPR, OEHHA



Draft Community Emission Reduction Programs

Posted: community.valleyair.org

What is AB617?

Assembly Bill 617 (AB 617) requires the California Air Resources Board (CARB) and air districts to develop and implement additional emissions reporting, monitoring, reduction plans and measures in an effort to reduce air pollution exposure in disadvantaged communities. Given that 20 of the 30 most disadvantaged communities in California are in the San Joaquin Valley, this process is expected to bring additional clean air resources and strategies to many Valley communities.

The District actively participates with and is facilitating full engagement of all sectors within each of the San Joaquin Valley's disadvantaged communities through meaningful and effective implementation of AB 617. The following webpages provide a wealth of information regarding this process and ways all Valley residents can get involved.



Upcoming Public Meeting

Community Identification & Prioritization is underway for year two of the Valley's AB 617 implementation. Join us Thursday, August 29, 2019 at 5:30pm for the discussion!

[MORE DETAILS](#)

[LEARN ABOUT NOMINATING YOUR COMMUNITY!](#)

First Year Selected Communities



South Central Fresno and the City of Shafter are the first Valley communities selected by the California Air Resources Board for investment of additional resources under AB 617. The Valley Air District has established a steering committee for each of these communities, consisting of community residents, businesses, community advocates, and government representatives, to assist in the development and implementation of community air monitoring and emission reduction programs.

The Valley Air District welcomes and encourages your participation and input in this collaborative community-based effort. Learn more about AB 617 implementation by selecting a community below!

Shafter Community

Learn more about this year-one AB 617 community

[COMMUNITY PAGE](#)

[DRAFT CERP](#)

South Central Fresno Community

Learn more about this year-one AB 617 community

[COMMUNITY PAGE](#)

[DRAFT CERP](#)

COMMUNITY EMISSIONS REDUCTION PROGRAM

Draft for Steering Committee Review

Shafter

San Joaquin Valley Air Pollution Control District
August 12, 2019

Next Steps in CERP Development

Date	Details
Early September	<ul style="list-style-type: none"> • CSC Meetings (review updated CERP, prep for Governing Board meeting) • Updated Draft CERP will be published prior to these meetings, incorporating comments received to date
Thursday, September 12	Final Draft Proposed CERP Published (1-week prior to Governing Board meeting)
Thursday, September 19	District Governing Board meeting to adopt proposed CERPs
October/November	CARB Staff to co-host CSC meetings as public process ahead of CARB hearing on CERPs
February 2020	CARB Governing Board meeting in Shafter to consider adoption of Shafter and SC Fresno CERPs
Ongoing	<ul style="list-style-type: none"> • CSC meetings to review and discuss CERP implementation • Implementation of CERP measures to begin upon District Governing Board approval • Ongoing input from Steering Committees • Annual reporting and five-year milestone report

Contact Information

Comments or questions?

AB617@valleyair.org

Jaime Holt Cell: (559) 309-3336

www.valleyair.org/community

General Air District Contacts and Information:

Fresno office (559) 230-6000

Modesto office (209) 557-6400

Bakersfield office (661) 392-5500

www.valleyair.org

Follow us on
social media



Use the Valley Air
App for the latest
air quality info.



webcast@valleyair.org