

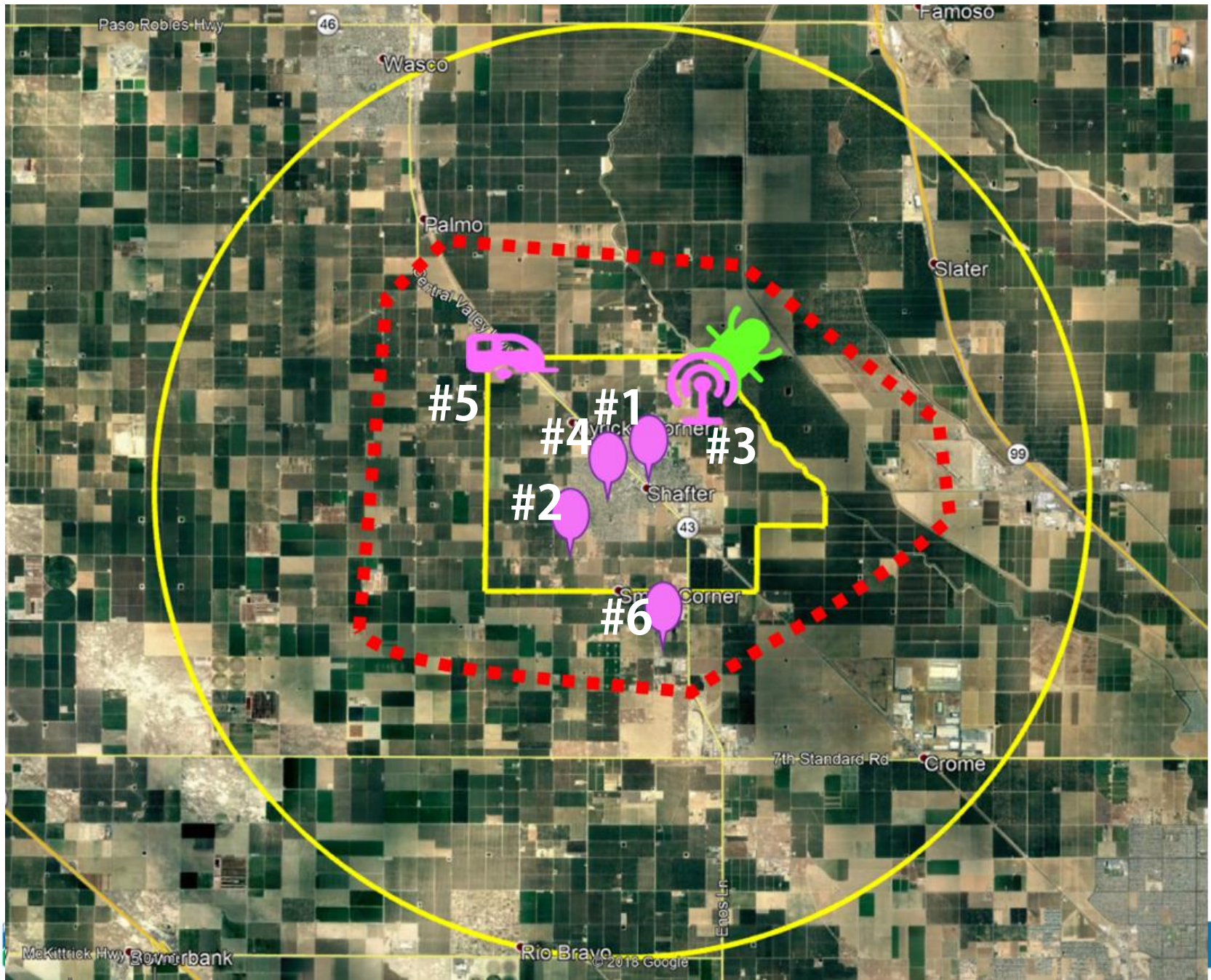
# Update on Shafter Community Air Monitoring Plan

San Joaquin Valley Air Pollution Control District  
October 21, 2019


# Community Air Monitoring Underway

- Sites determined during Community Steering Committee meeting in August
- Two PM2.5 monitors operating for past several months
- District in various stages of discussion with property and school district officials for remaining sites
- Need assistance with at least one site location
- Most air monitoring expected to be underway end of 2019



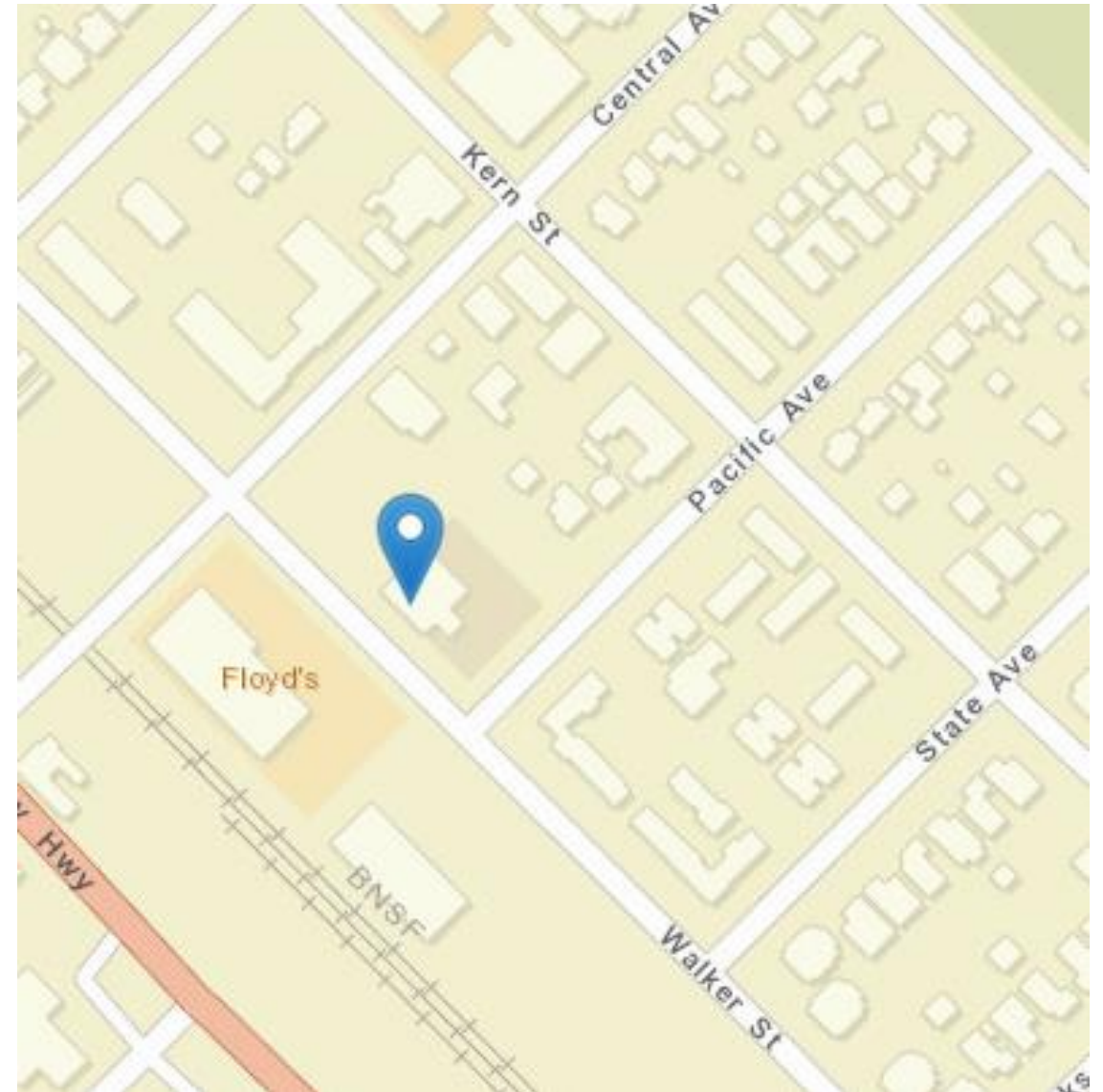


-  DPR Pesticide Monitoring
-  Stand-Alone PM2.5
-  Compact Air Monitoring System
-  Trailer
-  Mobile Monitoring Van

- Drive on a regular schedule throughout entire boundary all year
- Respond to community concerns
- 
- Recommended focus route

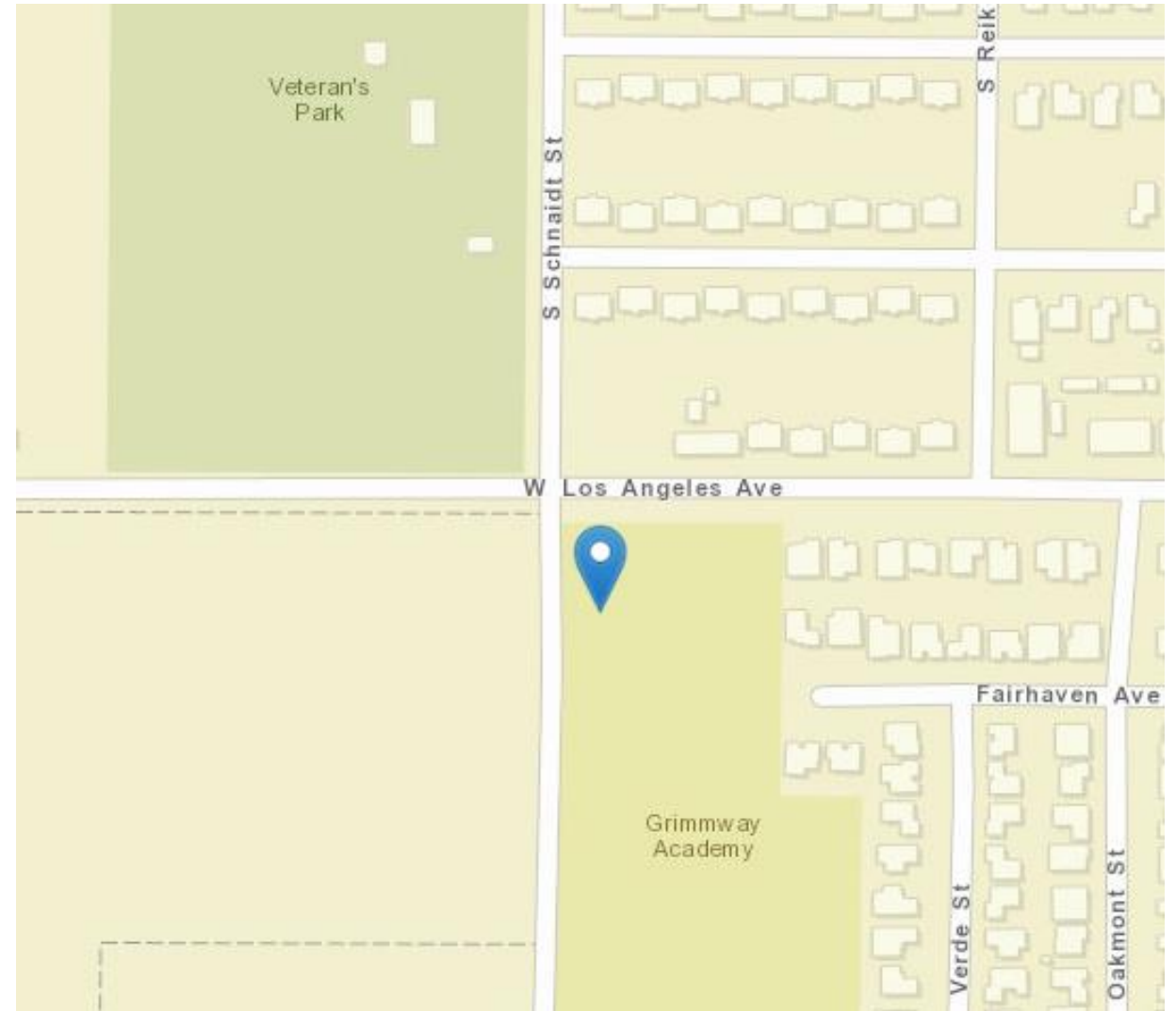
# Site #1: Shafter DMV

- Real-time PM<sub>2.5</sub>
  - Began February 6
- Real-time PM<sub>10</sub>
  - Based on community request
  - Temporary EBAM – began Aug 22



# Site #2: Grimmway Academy

- Real-time PM2.5
  - Began June 26



# Site #3: Sequoia Elementary

- Compact Monitoring System
  - PM2.5, BTEX, BC, Total VOCs, NOx, Ozone, SO2, and Meteorology
  - Trailer or platform mounted
  - Requires security, power, and access
- Monitoring will begin once site agreement in place
- District in discussions with Richland Unified
- DPR pesticide monitoring to continue



# Site #4: Golden Oak Elementary

- Real-time PM2.5
  - Platform mounted
  - Requires security, power, and access
- Monitoring will begin once site agreement in place
- District in discussions with Richland Unified





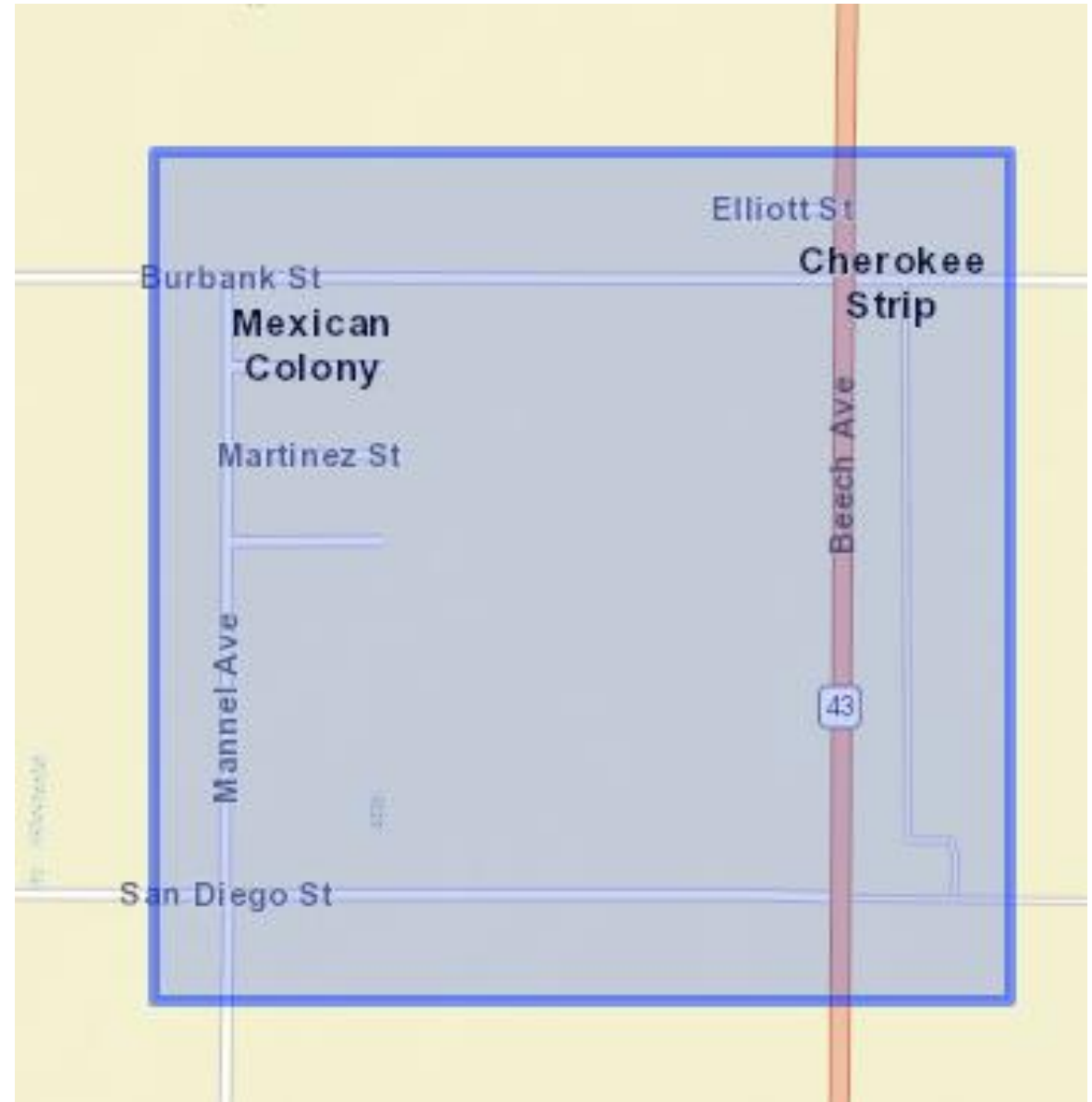
# Site #5: Farm Labor Camp

- Trailer
  - PM2.5, BTEX, BC, Total VOCs, NOx, Ozone, SO2, toxics, CO and Meteorology
  - Requires security, upgraded power, and access
- Monitoring will begin once site agreement in place
- District in discussions with Housing Authority of Kern County



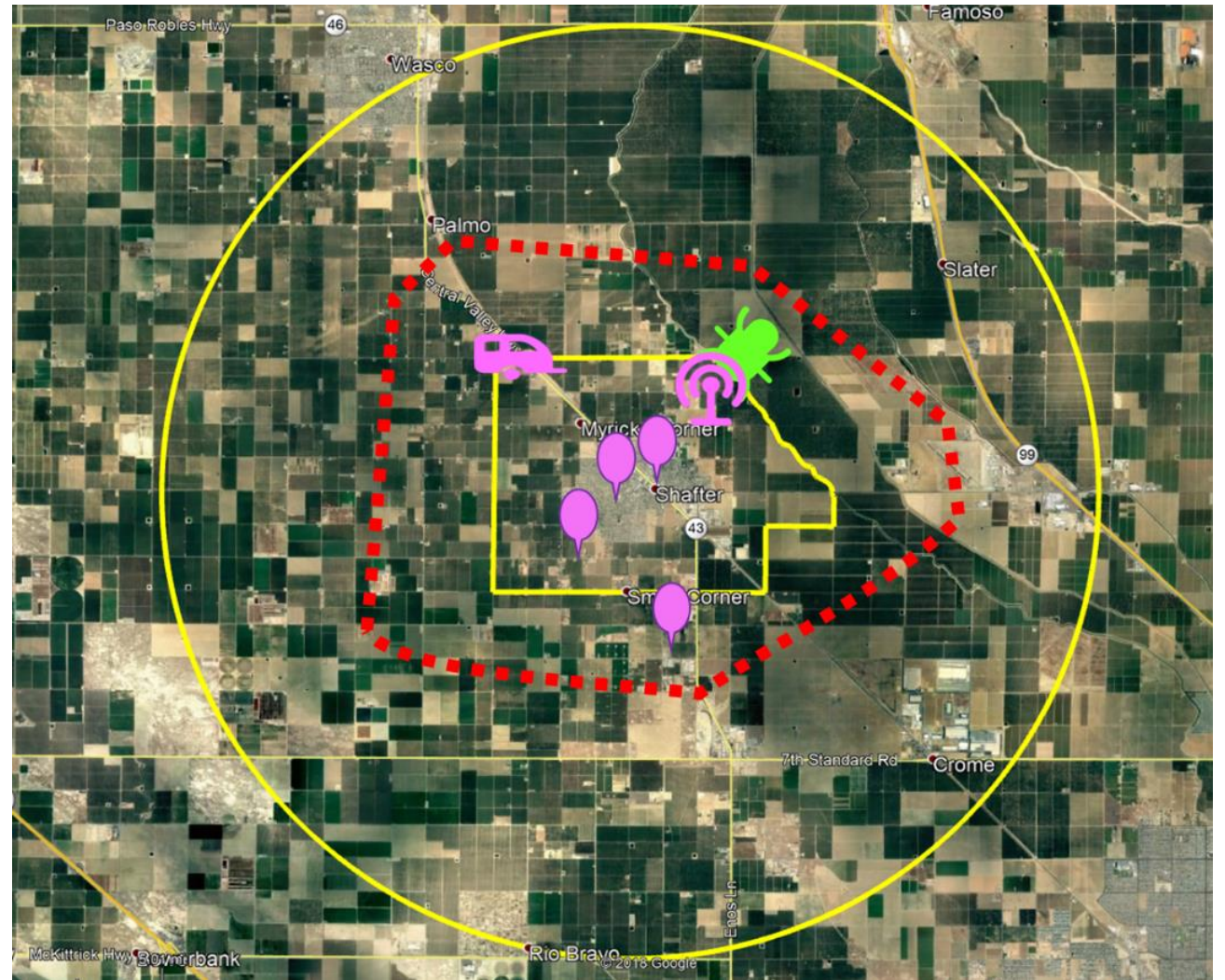
# Site #6: Mexican Colony

- Real-time PM2.5
  - Roof or platform mounted
  - Requires security, power, and access
- District challenged in finding suitable site that meets specifications
  - Need help and feedback from Community Steering Committee on alternative site



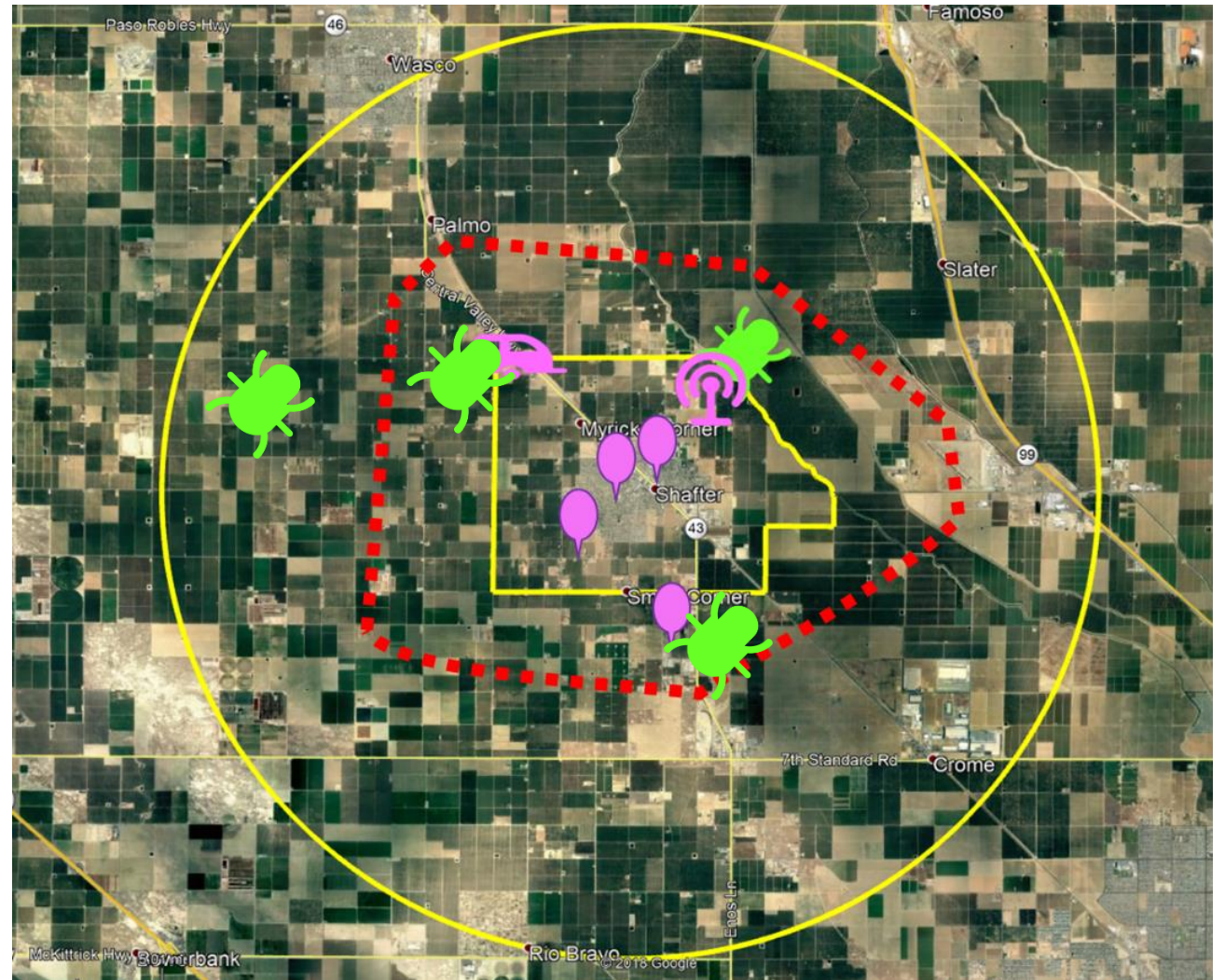
# Air Monitoring Van

- Mobile Van
  - PM2.5, BTEX, BC, Total VOCs, NOx, Ozone, SO2, toxics, CO and Meteorology
- Focus on Mexican Colony and Cherokee Strip on regular basis
  - Should site power and security allow, park for extended period for longer-term understanding of the sources of pollution
- Use regularly throughout 7 mile radius
- To begin November 2019



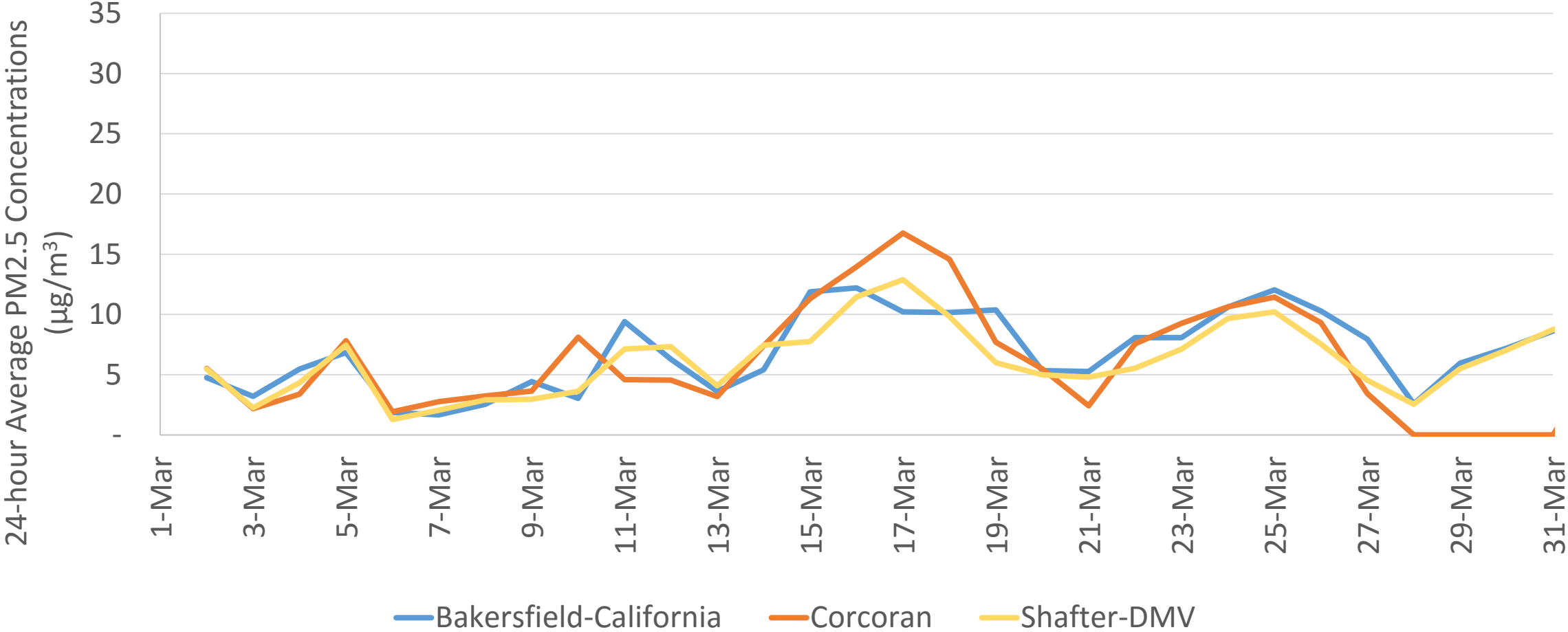
# DPR Pesticide Monitoring

- Community Steering Committee recommended additional pesticide air monitoring sites during Aug 26 exercise
- DPR to continue to use recommendations to develop local and statewide efforts



# Daily Average PM2.5 Data Comparison

## March 2019



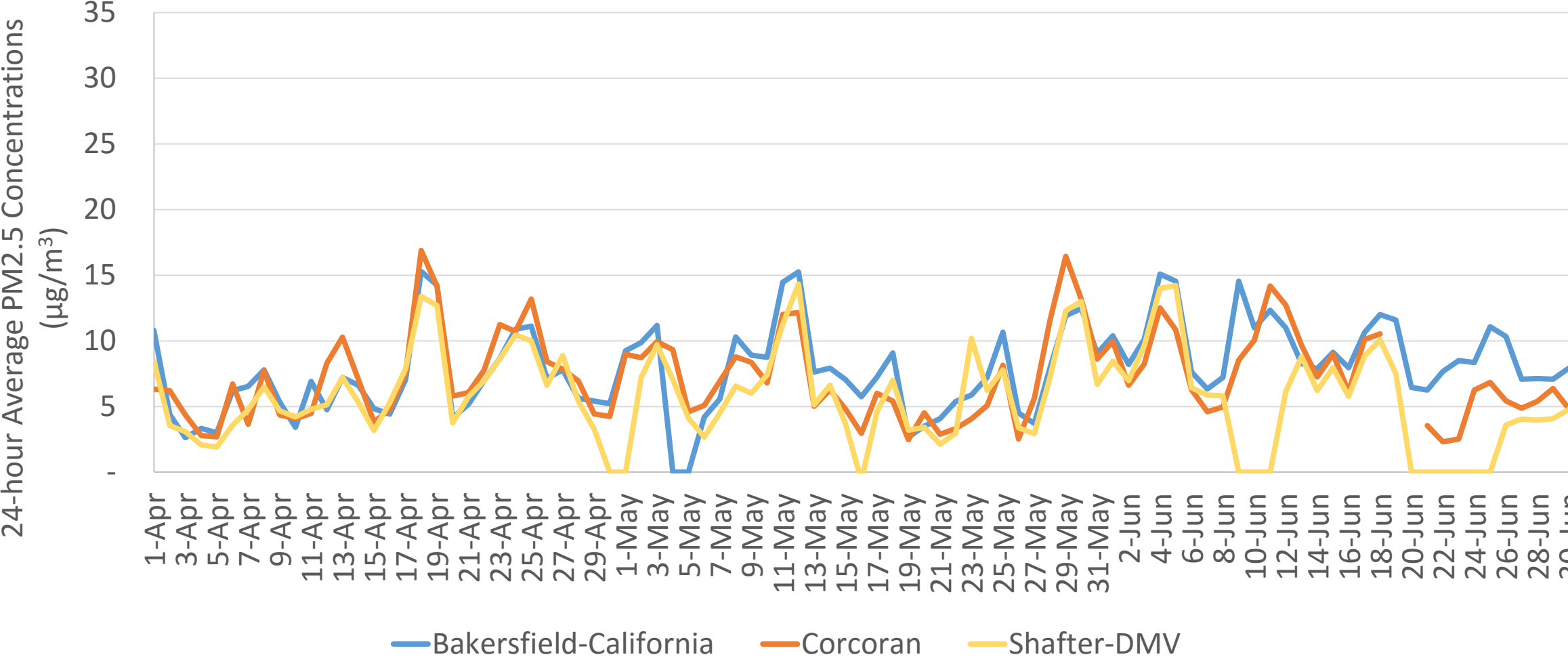
# Comparison of Average PM2.5

## March 2019

Site	Average PM2.5 Concentration ( $\mu\text{g}/\text{m}^3$ )
Bakersfield-California	6.95
Corcoran	6.92
Shafter-DMV	6.24

# Daily Average PM2.5 Data Comparison

## April 1–June 30, 2019



# Comparison of Average PM2.5

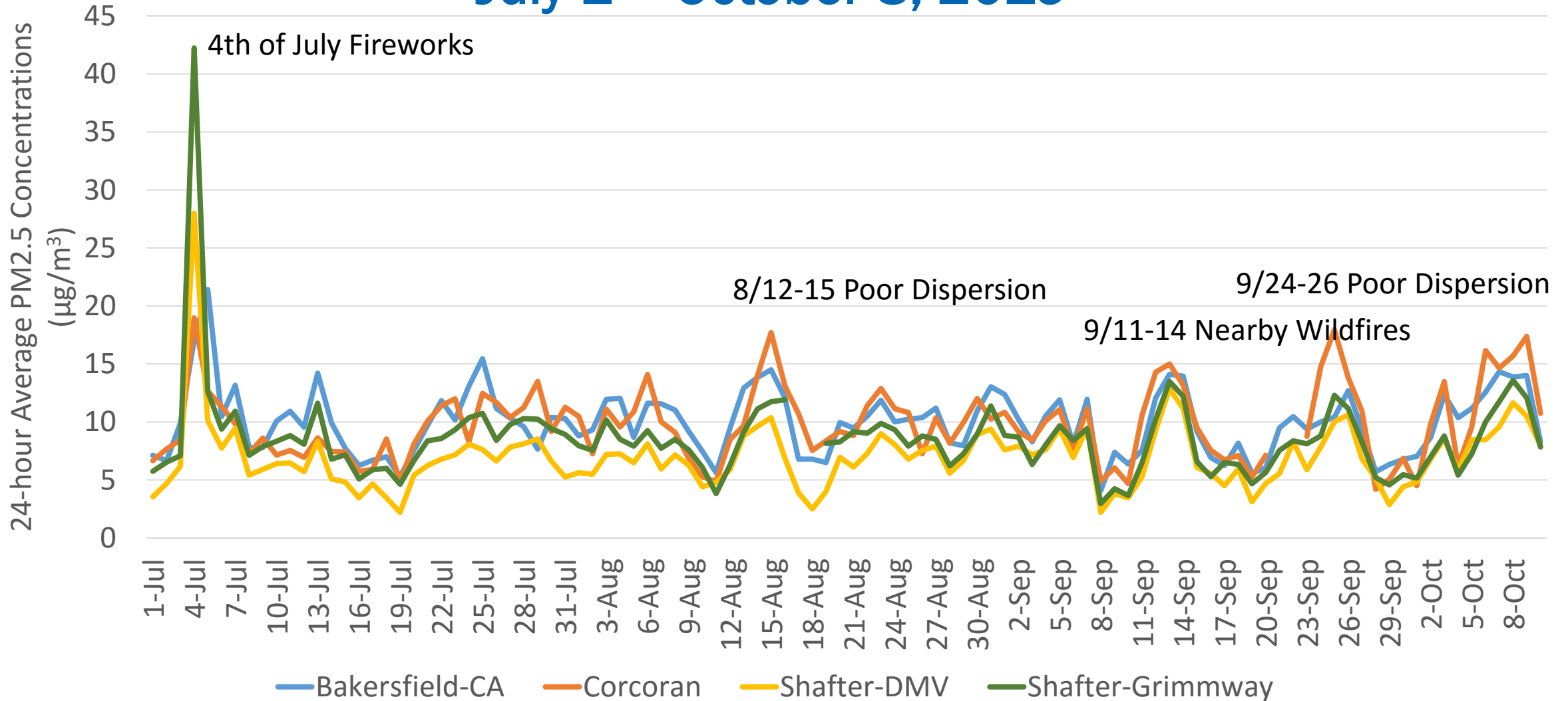
April 1–June 30, 2019

Site	Average PM2.5 Concentration ( $\mu\text{g}/\text{m}^3$ )
Bakersfield-California	8.07
Corcoran	7.24
Shafter-DMV	6.49



# Daily Average PM2.5 Data Comparison

## July 1 – October 8, 2019

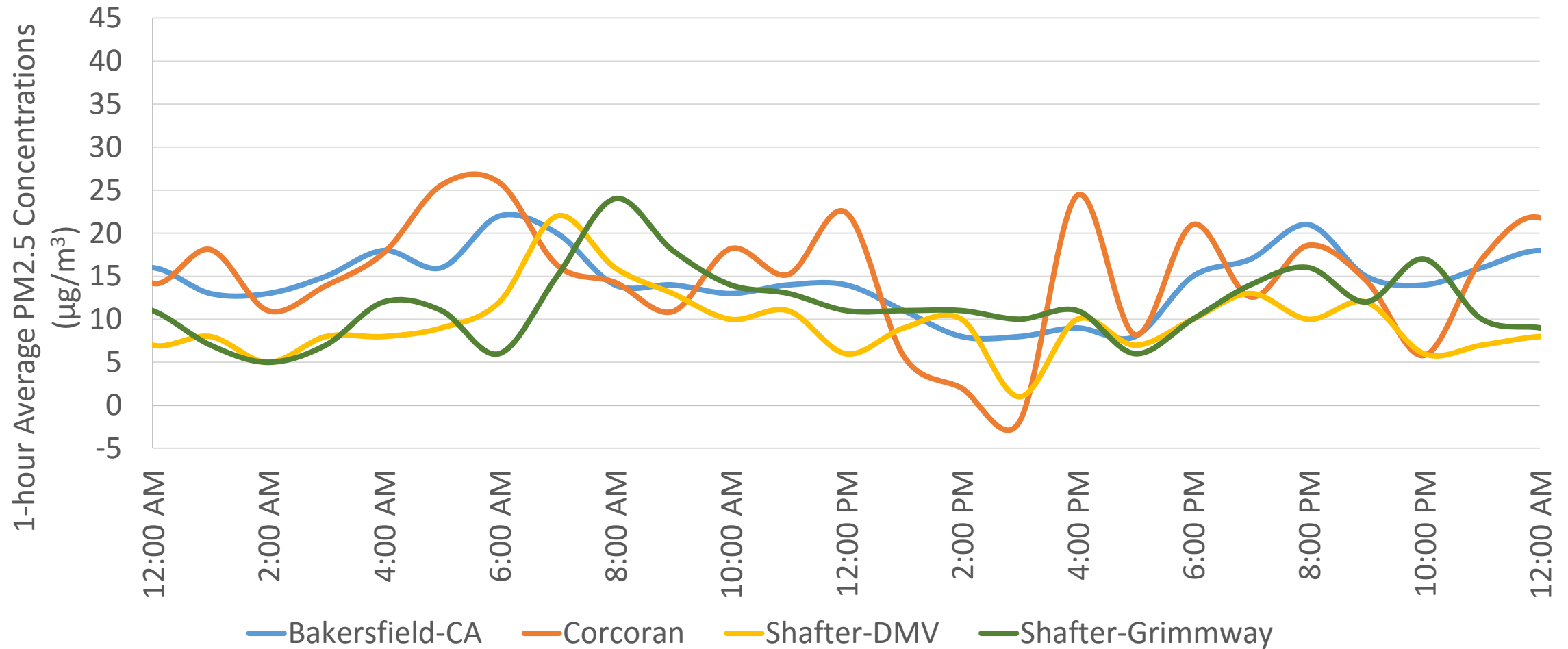


# Comparison of Average PM2.5

July 1 – October 8, 2019

Site	Average PM2.5 Concentration ( $\mu\text{g}/\text{m}^3$ )
Bakersfield-California	9.95
Corcoran	9.84
Shafter-DMV	6.97
Shafter-Grimmway	8.58

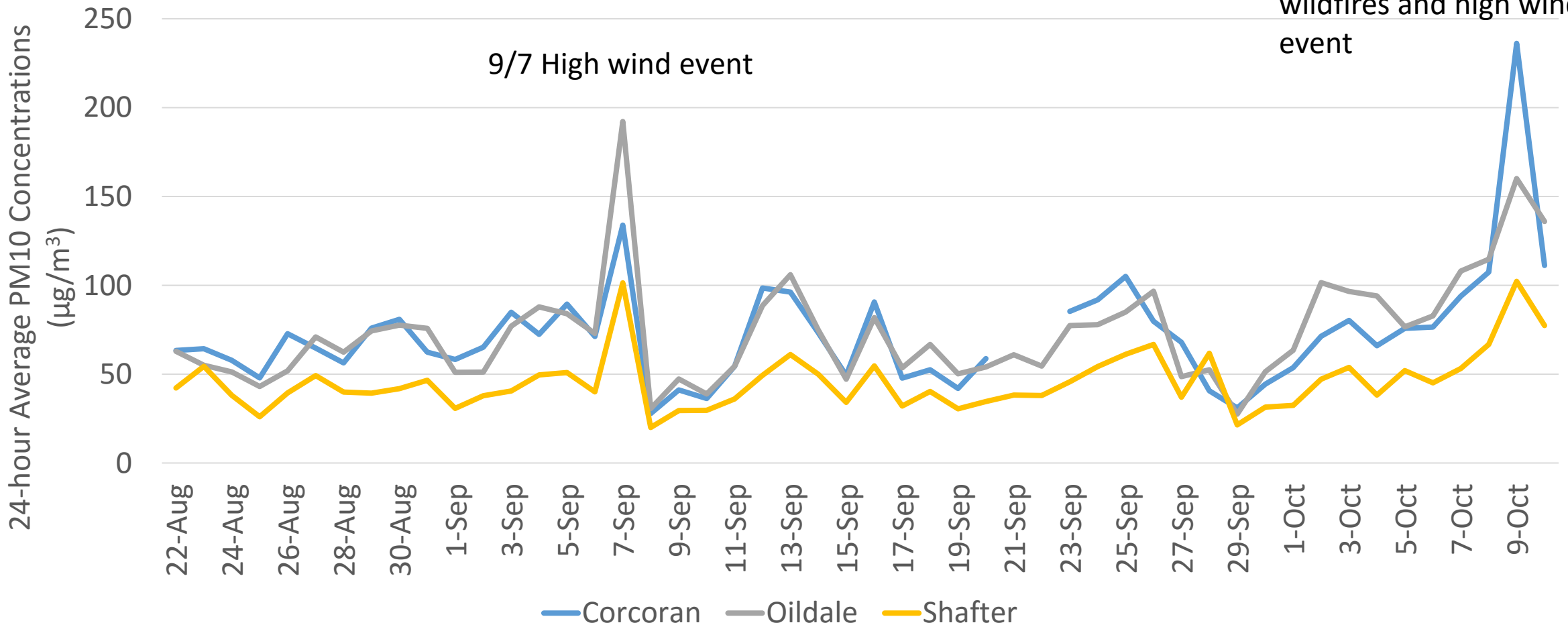
# Hourly Average PM2.5 Data Comparison Oct 7, 2019



# Daily Average PM10 Data Comparison

## August 22 - October 10, 2019

10/7-10/9 Nearby wildfires and high wind event



# Comparison of Average PM10

August 22 – October 10, 2019

Site	Average PM10 Concentration ( $\mu\text{g}/\text{m}^3$ )
Oildale	73
Corcoran	74
Shafter-DMV	46