



Port of Stockton's East Complex

February 1, 2023

Presented By:

Jeffrey Wingfield, Port of Stockton
Jolene Hayes, Fehr & Peers

FEHR & PEERS



Background

- Historically Port access to the East Complex and West Complex (Rough and Ready Island) was provided by the SR-4/South Fresno Avenue Interchange
- In 2017, the SR-4 Crosstown connector was constructed. This diverted West Complex traffic from South Fresno Avenue, but East Complex traffic remains
- In 2022, roughly 50% of traffic on South Fresno Avenue in the Boggs Tract Neighborhood are trucks.

East Complex Truck Access Issues

Truck Traffic Issues

- Truck parking
- Truck traffic impacting residents and Washington Elementary (noise/safety)

Common Responses to Community Complaints

- Prohibit truck parking on all public streets
- Remove truck route designations
- Regulate the design of major freight generators

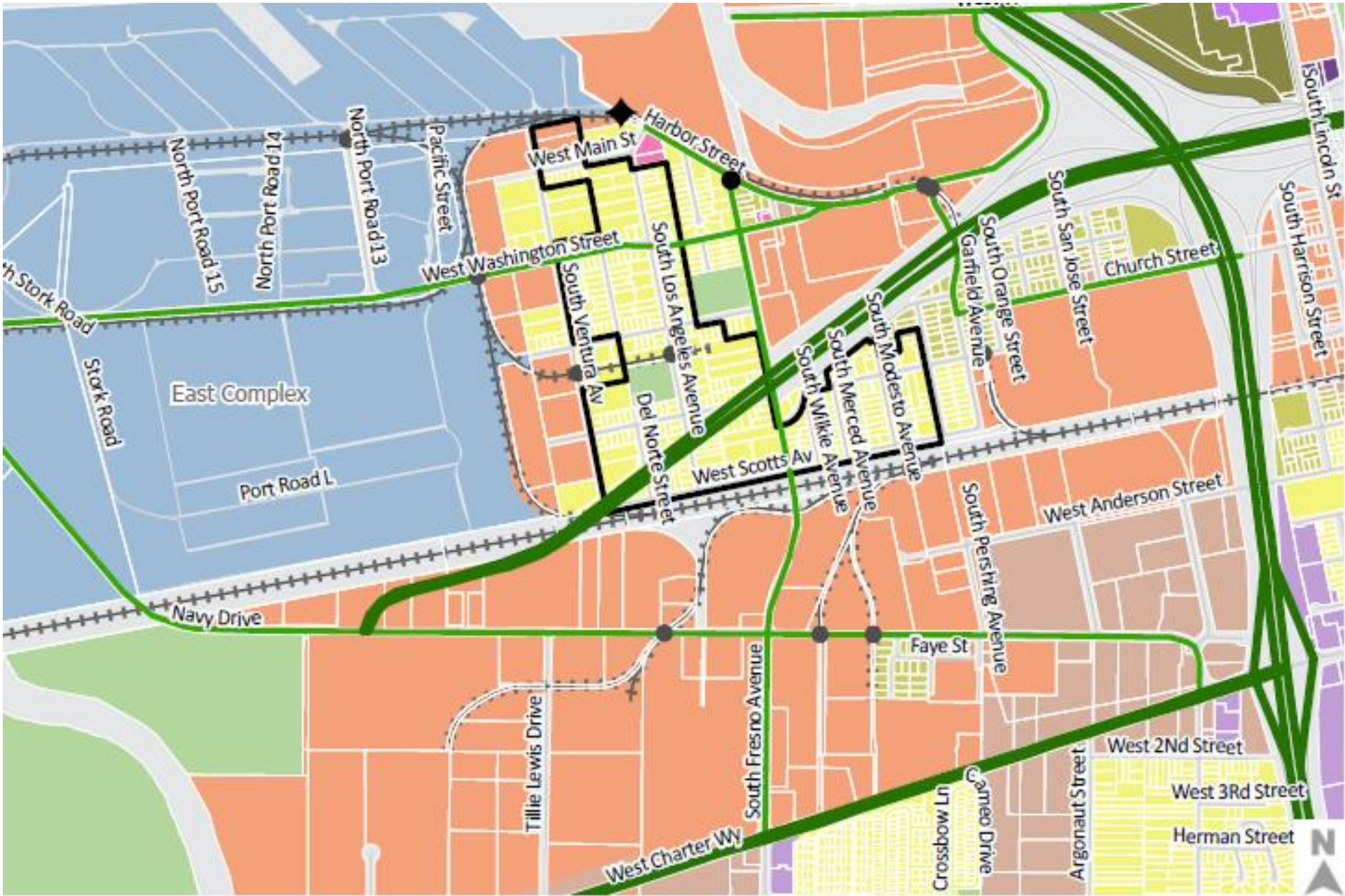
Existing Freight Generators – Why are there trucks in the neighborhood?

- City of Stockton's Zoning Code allows for industrial facilities in Boggs Tract
- How do they access their facilities?
 - Port of Stockton's East Complex Gate
 - Penny Newman Grain
 - Duraflame (2 locations)
 - New trucking facilities on Ventura Ave.

Key Considerations

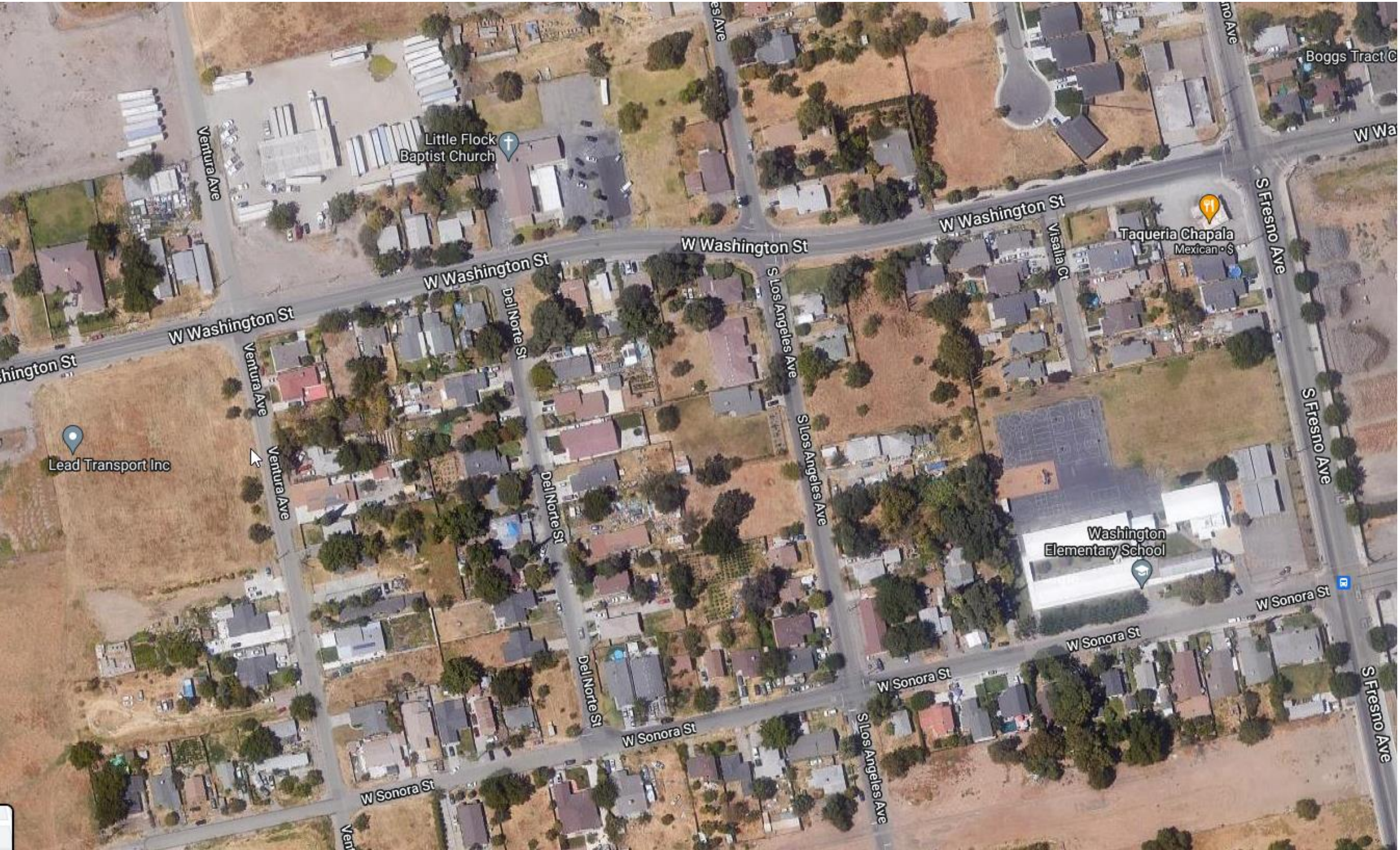
- The Port Gate to the East Complex is located on Harbor Street and is only accessible by traveling westbound on Harbor Street from northbound Fresno Avenue or from downtown Stockton by traveling on westbound Weber Avenue westbound Harbor Street.
- The Boggs Tract neighborhood is located between the SR-4 Cross Connector and the Port Gate to the East Complex.
- Truck routes, including STAA truck routes can be redefined, but must reasonably accommodate access to industrial areas.
- Improved access must consider the level and intensity of train activity at at-grade crossings in the area.
- The area surrounding the Boggs Tract neighborhood, within San Joaquin County, is surrounded by parcels zoned by the City of Stockton for industrial development.

East Complex Land Use Designation



- Zoning
- | |
|----------------------------|
| Public Facilities |
| Port |
| High Density Residential |
| Low Density Residential |
| Medium Density Residential |
| Downtown Commercial |
| General Commercial |
| Neighborhood Commercial |
| Office Commercial |
| General Industrial |
| Light Industrial |

Figure 2
Port of Stockton - East Complex
Zoning Map



Jurisdictions Boundaries and Truck Routes

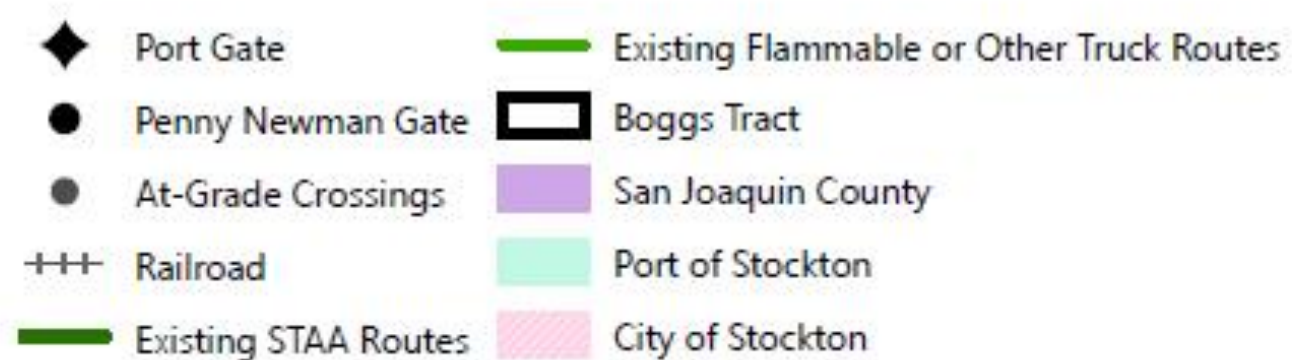
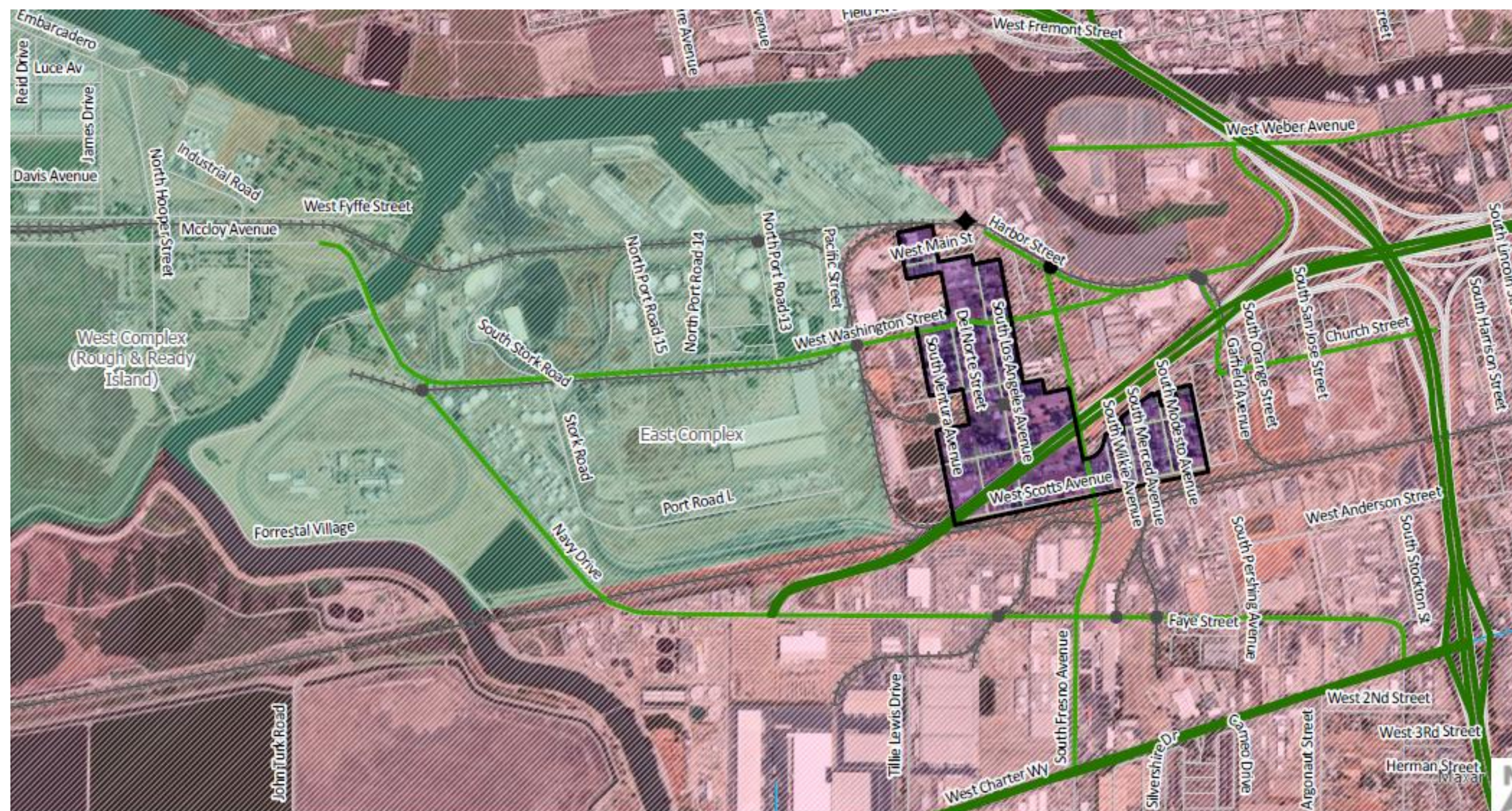
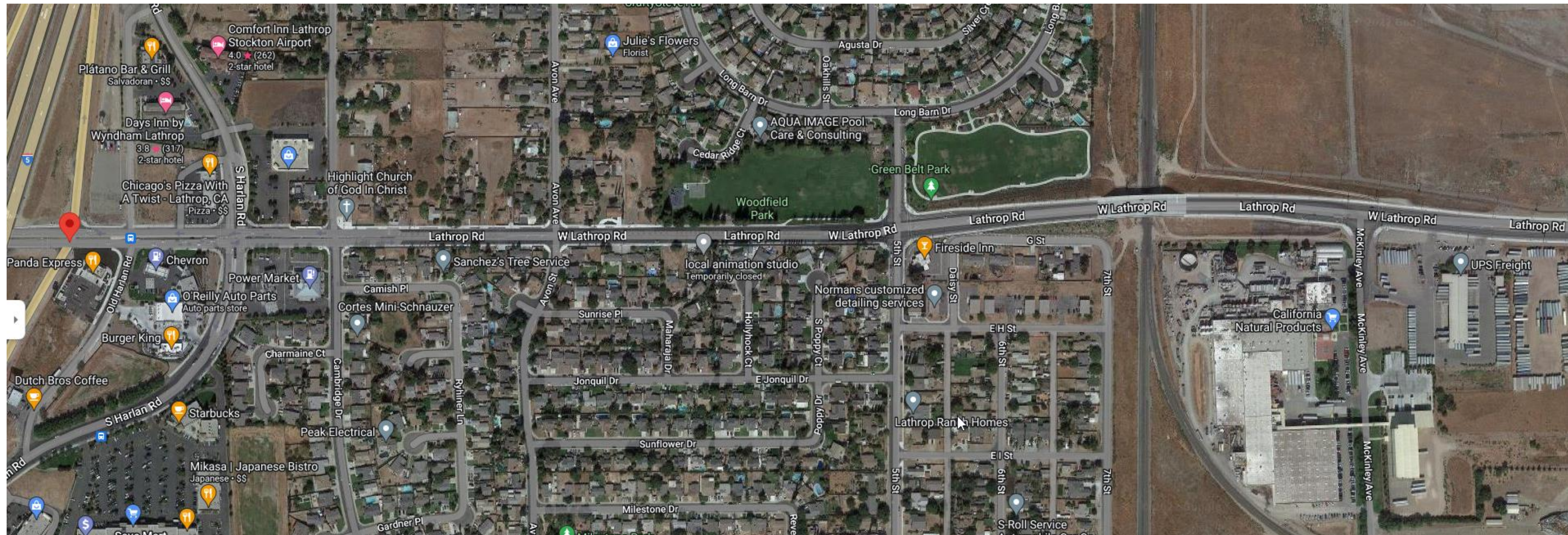


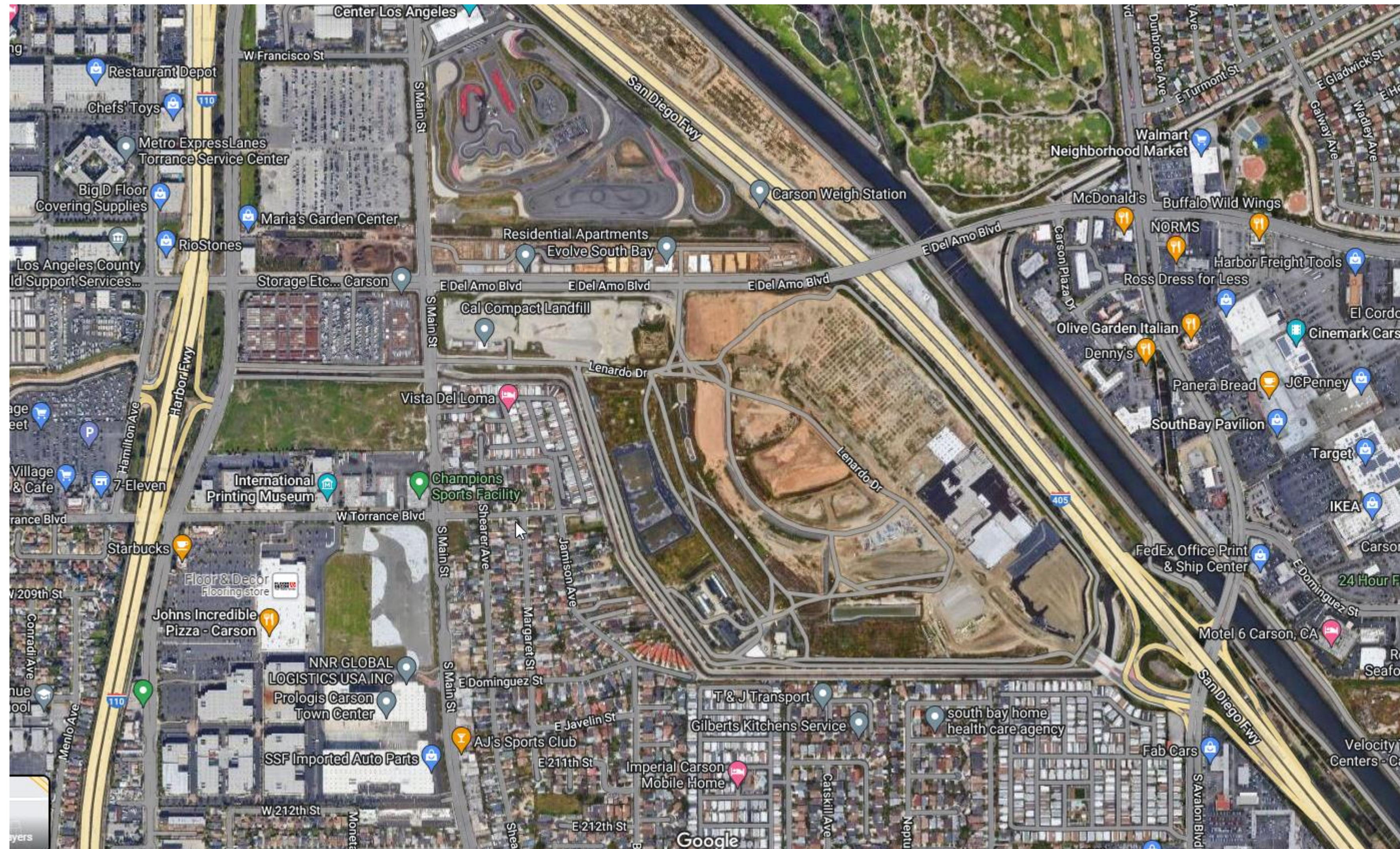
Figure 1

Port of Stockton - East Complex
Existing Truck Routes

Existing Truck Routes



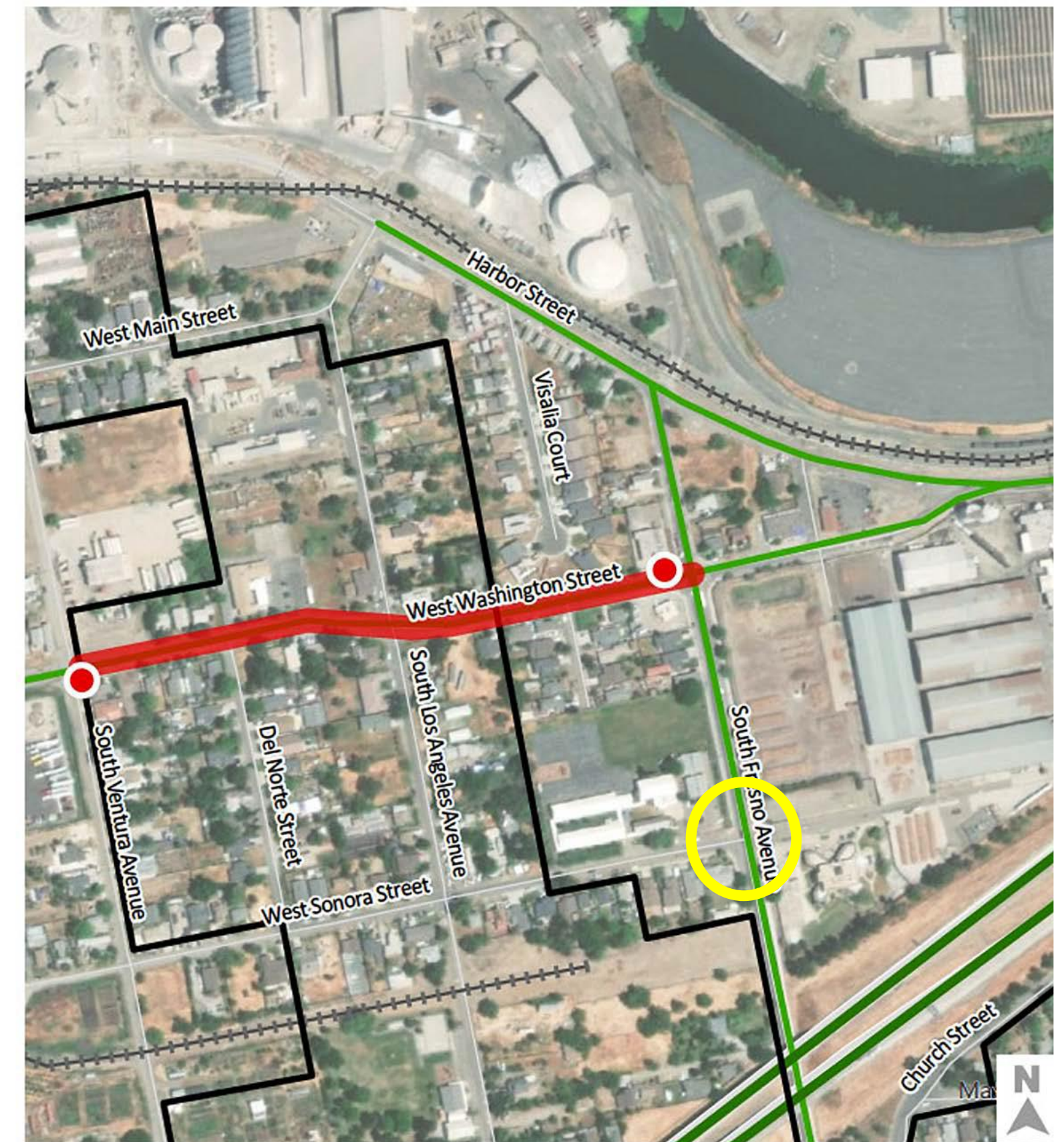
Short-Term Truck Access Changes



Mid-Term Port Access Improvements

The recommendations below are interim improvements that would alleviate, but not eliminate concerns related to truck access into the East Complex.

1. Work with the City of Stockton and San Joaquin County to remove the designation of truck routes on West Washington Street between Ventura Avenue and Harbor Street.
2. Work with the City of Stockton to install curb extensions and a pedestrian hybrid beacon at the South Fresno Avenue crosswalk at West Senora Street.
3. Revisit land use and zoning with City of Stockton to identify parcels that could be re-zoned to residential.

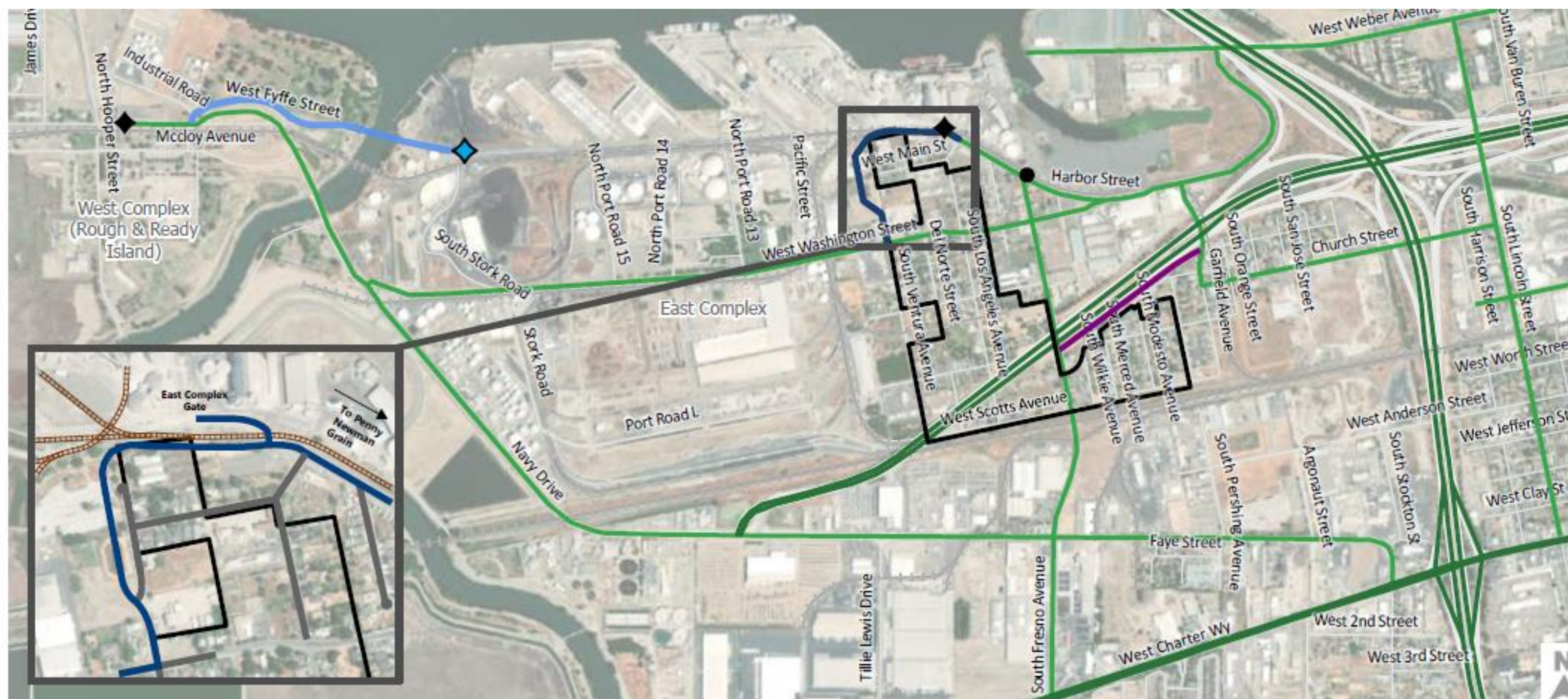


Long-Term Port Access Improvements

Long-term improvements seek to relocate gate access or provide direct access into the East Complex, circumventing the Boggs Tract neighborhood.

1. Truck Diversion to Ventura Avenue
2. Truck Diversion to Garfield Avenue
3. Bridge Access from the West Complex

Long-Term Port Access Improvements



Next Steps

West Complex Truck Routing and Access Study

- Examine current truck traffic volumes and access
- Estimate current and future truck traffic demand

Concept Design for Short-Term Truck Access Changes

- Develop Mid-Term Truck Rerouting Improvements
- Fully analyze Long-Term Truck Rerouting Improvements
 - Alt 1 – Truck Diversion to Ventura Avenue
 - Alt 2 – Truck Diversion to Garfield Avenue
 - Alt 3 – Bridge Access from the West Complex