

Urban Greening & Vegetative Barriers Update

- LMR intends to submit proposals for both projects within 1 month
- Vegetated Barrier Proposal:
 - Receiving bids from local contractors for estimates to confirm budget allocated for labor and material
 - Shared initial project specs with SUSD Facilities and Planning Department to gauge interest and viability of project with SUSD current timeline and greening plans
 - SUSD staff is interested in working with LMR on planting trees on school campuses located within AB617/TCC project areas
 - LMR has started initial conversations with CalTrans about Veg Barrier project & establishing a maintenance agreement between CalTrans & LMR

- Hazelton Elementary site could include multiple barriers to enclose the yard and playground
- 2 acres of land owned by Caltrans NW to SW of Hazelton Elementary to be discussed as a separate vegetated barrier site
- Site(s) will give us a good estimate of costs for concrete removal, soil grading and amending, planting, irrigation
- Knife River Construction:
 - Shares back fence with school



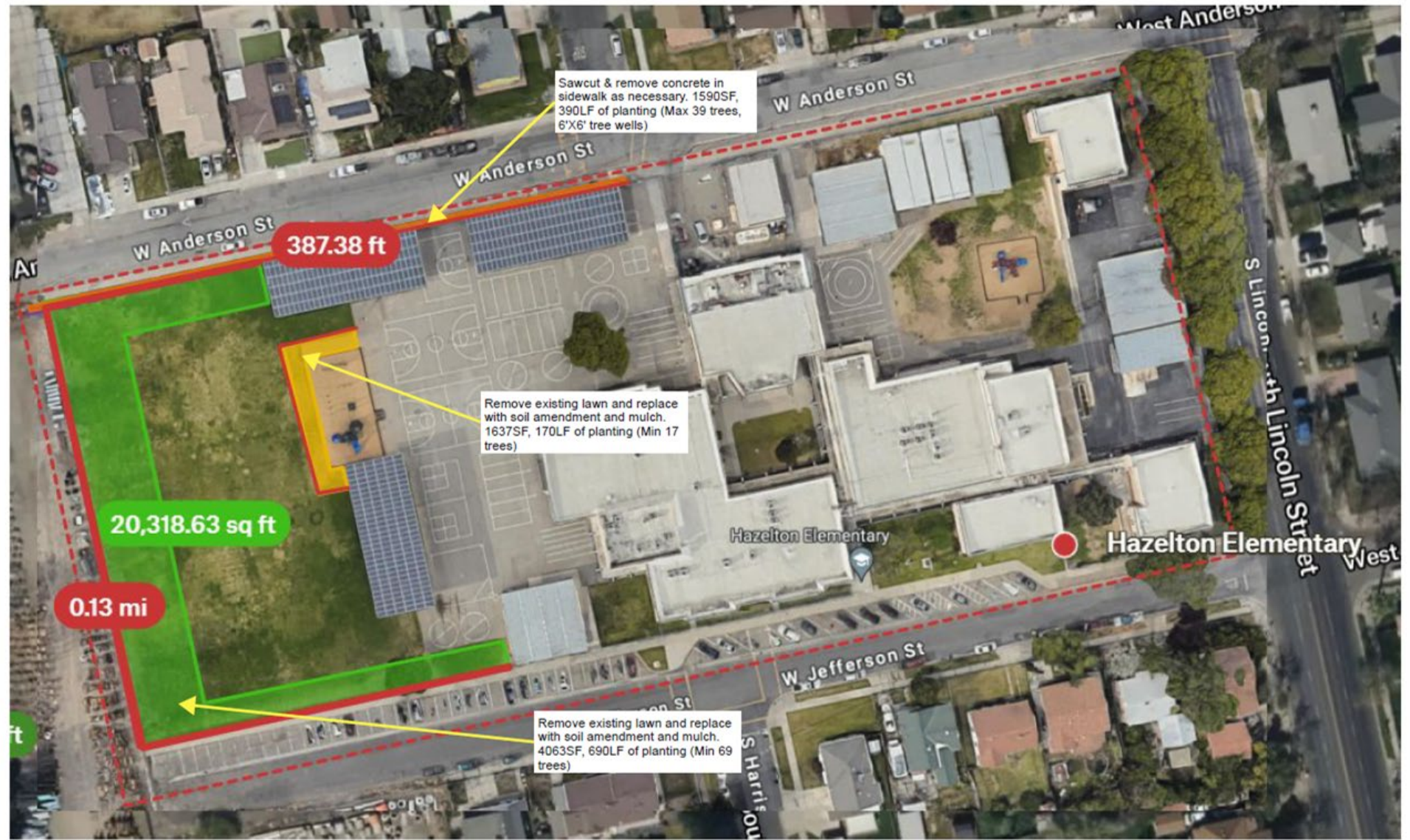
True Cost of tree planting/maintenance

Table 3. Street Tree Planting Costs for Los Angeles County Public Works and the City of Santa Monica.



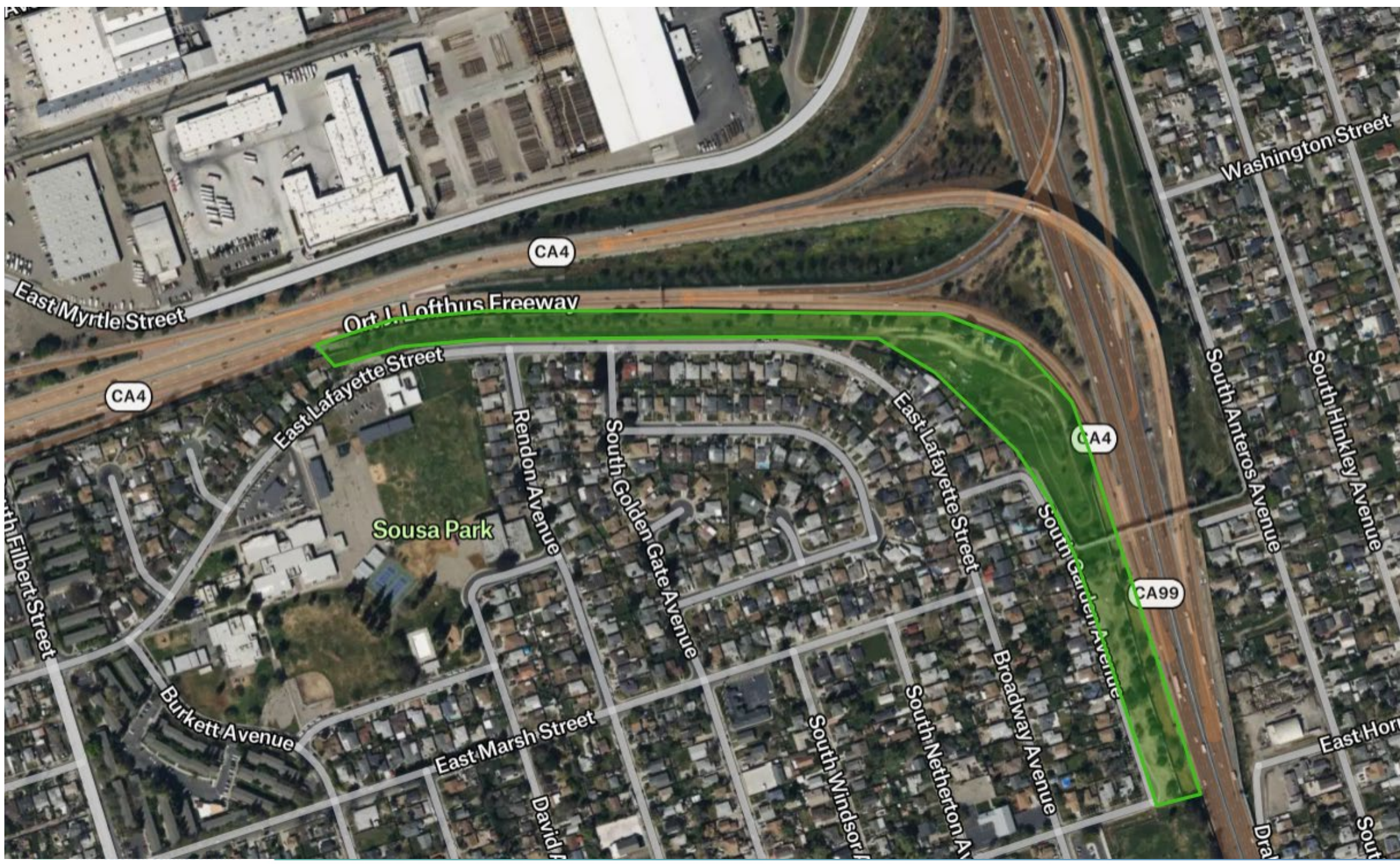
	Los Angeles County	City of Santa Monica
Service area	65% of Los Angeles County is Unincorporated - or 2,653 sq. miles	8.4 sq. miles
Tree planting (24-in box tree)	\$550/tree	\$290.80/tree
Establishment period	3 years to establish. Estimate of \$1,080/tree. Requires resident support for irrigation.	Trees are under an 18-month guarantee after planting. Maintenance by contractors.
Post-establishment maintenance	3 or 6-year cycles depending on the growth rate of the tree. 2-year cycle for palm trees. Standard trim at \$165/tree, accounts for cost increases over time as the tree matures.	2, 3, or 5-year prune cycle depending on species and location. Maintenance operations are usually outsourced. Safety prune costs \$26.40/tree and full prune/crown reduction costs \$52.80/tree.
Tree and stump removal	Cost is averaged over a 40-year lifecycle. No information on local mortality rate. \$1,700/tree estimate.	Cost is averaged over a 40-year lifecycle. No information on local mortality rate. \$1,692/tree (for a 40" DSH tree) <i>*DSH = diameter at standard height</i>
Administrative costs	Factored into the tree planting costs. Estimated at about 10% of the total cost.	No available estimate for admin support. Assuming 10% of the total cost.
Infrastructure repairs	N/A - The cost of repairs has not yet been correlated with tree locations.	N/A - Sidewalk repair program does not identify the reason for repairs.
Liability costs	Claims managed by the County Chief Executive Office and not correlated with tree costs.	Unable to release data relating to risk management claims.

- Veg Barrier budget can cover one project site and given the cost of tree plantings can't increase the number of trees









Urban Greening & Vegetative Barriers Update

- Urban Greening Updates:
 - Plan for 500 trees across AB617 project area
 - Vehicles and large equipment can now be included in the project as *in kind*
 - Tree plantings will be prioritized in neighborhoods with lowest existing canopy coverage, low Tree Equity scores, and will make the most impact on:
 - Active transportation commuting routes in close proximity to schools
 - Using Safe Routes To School routes for reference
 - Neighborhoods that are having existing trees removed en mass
 - City of Stockton Permit Center is NOT currently accepting tree planting permits
 - LMR is working with Public Works partners to troubleshoot for this and other potential projects
 - School yard tree plantings, front yard and backyard plantings
 - All tree plantings will follow signed maintenance agreement between LMR and property holder and/or tenant
 - Plantable space on parkstrips and other city R.O.W can still be mapped in first quarter of the project

Stockton Urban Greening

18 views

Last edit was on October 19, 2023

Add layer Share Preview

- Edison High School
- All Saints Academy (Formerl...
- Huerta Elementary School
- Taylor Skills School

Daycare, Senior care, Community ...

Uniform style

All items (25)

Parks

Uniform style

All items (10)

Mattie Harrell Park

