



# San Joaquin Valley

AIR POLLUTION CONTROL DISTRICT

## Shafter Community Air Monitoring Report 2022 3rd Quarter (July 2022 – September 2022)



## Table of Contents

I. Background .....	3
II. Summary of Findings for the Quarter.....	4
III. Status of Community Air Monitoring Network .....	4
IV. Mobile Air Monitoring Van Activities .....	6
V. Summary of PM <sub>2.5</sub> and VOC Speciation Analysis .....	7
VI. Appendix of Pollutant Species and Comparative Analysis .....	10

## I. Background

Assembly Bill (AB) 617, signed into law in July 2017, has resulted in a statewide effort to reduce air pollution and improve public health in communities that experience disproportionate burdens from exposure to air pollutants statewide through new community-focused and community-driven actions. AB 617 provides mechanisms and resources to implement community-specific air quality monitoring networks, develop and implement emission reduction programs; improve availability of data and other technical information; and invest substantial funding in the community through voluntary incentive funding measures. Shafter, a rural community in Kern County, was selected as a first year community by CARB in September of 2018.

District staff provided assistance to the Community Steering Committee (CSC) members by helping them to develop their recommended air monitoring priorities. The District worked with CSC members as they reviewed and evaluated a variety of different resources, including maps of stationary sources, area sources, mobile sources, prevailing wind direction data, and sensitive receptor locations relative to sources of air pollution within the community. The CSC adopted their official recommendation in July 2019, including the deployment of various air monitoring platforms within the community as a part of the [Shafter Community Air Monitoring Plan \(CAMP\)](#).

The District has invested an extensive amount of work into implementing the CAMP, including researching, developing, configuring, deploying, trouble-shooting, and maintaining new state-of-the-art high precision air monitoring equipment. This also includes the use of the mobile air monitoring van to take measurements in a variety of locations of interest and to respond to community concerns. The District has also contracted with analytical laboratories to conduct the needed analysis to speciate the VOC and PM<sub>2.5</sub> samples being taken in the community. In addition, the District has worked closely with organizations to negotiate leases to authorize the deployment of the equipment on site, followed by logistical, electrical, and site preparation work for the installation of the air monitoring equipment.

### **Access to Data from Shafter Community Air Monitoring Network**

In addition to these quarterly reports, the District is continuing its efforts to enhance the availability of air monitoring data and information to ensure that the community is fully apprised of the ongoing air monitoring efforts and are receiving the latest air quality information. This includes continued regular updates to the Community Steering Committee (CSC) and bilingual weekly updates and real-time air quality information in Shafter, which are both available on the [Shafter Air Monitoring webpage](#). In addition, raw hourly data from the Shafter community air monitoring network are also being sent to CARB and are expected to become available on CARB's statewide [AQView data portal](#) once the website is complete.

## II. Summary of Findings for the Quarter

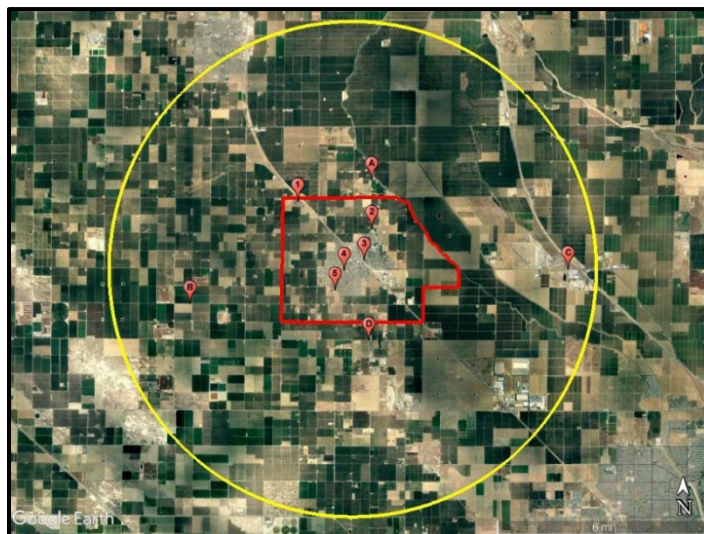
Through the continued implementation of the Shafter CAMP during this period, the following was observed among the pollutants monitored:

- The third quarter of 2022 was dominated by high pressure patterns across the district. The high pressure patterns produced triple digit heat, and caused poor dispersion across the Valley.
- There were some wildfires in the Sierra Nevada Mountains and the mountains of northern California that were sparked by thunderstorms, which caused elevated PM2.5 and Ozone concentrations.
- During this period, acetaldehyde, methanol, ethanol, 2-propanol, and acetone were the primary VOCs detected. Overall, during this monitoring period the concentrations of VOCs detected in the samples taken were well below health based thresholds.
- Various exceedances of the 8-hour ozone standard occurred during the high temperatures and stagnant weather conditions. PM2.5 averages remained below the 24-hour federal standard throughout the quarter.
- See Appendix for further analysis including Heat Maps and Charts

## III. Status of Community Air Monitoring Network

Consistent with the community recommended air monitoring network design, the District is implementing the community air monitoring plan for Shafter. The following map and table detail the network design for the Shafter CAMP, as well as the status of implementing each specified air monitoring site.

**Figure 1 Design and Status of Shafter Community Air Monitoring Network**



Location	Site Location	Monitoring Platform	Implemented (Y/N)
1	Shafter Farm Labor Center	Air Monitoring Trailer	Y
2	Sequoia Elementary School	Compact Multi-Pollutant	Y
3	Shafter DMV	Real-time PM2.5 and PM10	Y
4	Golden Oak Elementary	Real-time PM2.5	Y
5	Grimmway Academy	Real-time PM2.5	Y
A	North of Shafter in agriculture area	Air Monitoring Van	Y
B	West of Shafter near dairy operations	Air Monitoring Van	Y
C	East of Shafter near industrial/airport area near Highway 99 and Lerdo Highway	Air Monitoring Van	Y
D	La Colonia	Real-time PM2.5	N, Interim use of Air Monitoring Van

The District continues to work on implementing the Shafter CAMP, as well as making changes as needed based on CSC member comments and other logistical reasons. During this period, the following highlights recent changes or continued work to implement the Shafter CAMP:

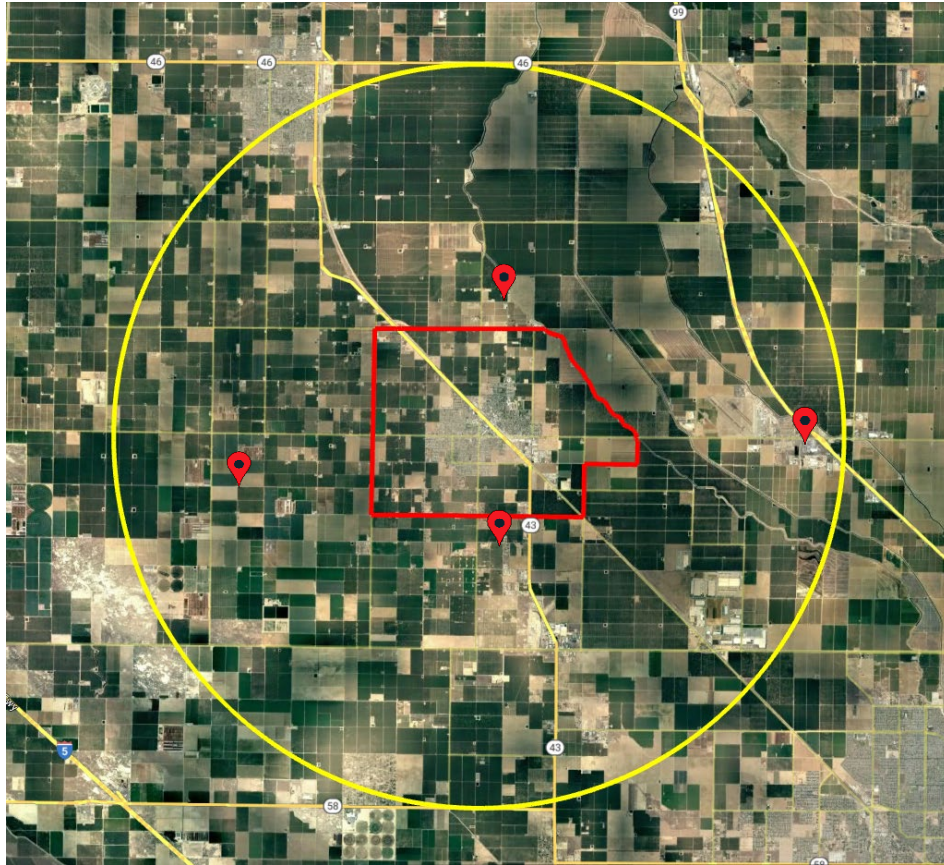
- Air Monitoring in La Colonia: The District continued to move forward in deploying the last remaining air monitor to La Colonia. The District is working with Kern County to place a monitor at a future community park on Martinez Street. Concurrently, the District is also working with the property owner of an alternative site on Rodriguez Street, located just north of the future community park.



#### IV. Mobile Air Monitoring Van Activities

During this quarterly air monitoring period, the District used the mobile air monitoring van to measure air quality at the following locations:

**Figure 2 Mobile Air Monitoring Locations**



The following table provides a summary of the results of the air quality data collected with the air monitoring van during this period. Green colored values represent pollutant concentrations that are below the applicable health standard or Reference Exposure Level (REL), while orange colored values represent elevated values or values above the applicable health standard or REL. For reference, a detailed table of all community air monitoring data collected with the mobile air monitoring van is available on the Shafter community air monitoring [website](#).

**Table 1 Summary of Data Collected with Mobile Air Monitoring Van**

Pollutant	Peak 1-hour Average Value	Applicable Standard
PM2.5	29.0 µg/m <sup>3</sup> *	35 µg/m <sup>3</sup> (24-hr average)
Ozone	75.6 ppb*	70 ppb (8-hr average)
CO	0.3 ppm	35 ppm (1-hr average)
NO2	15.5 ppb	100 ppb (1-hr average)
SO2	5.4 ppb	75 ppb (1-hr average)
Benzene	0.0 ppb	8 ppb (Acute Risk Exposure Level) 1 ppb (Chronic Risk Exposure Level)
Toluene	0.0 ppb	9,818 ppb (Acute Risk Exposure Level) 80 ppb (Chronic Risk Exposure Level)
Ethylbenzene	0.0 ppb	461 ppb (Chronic Risk Exposure Level)
Xylene	0.0 ppb	5,067 ppb (Acute Risk Exposure Level) 161 ppb (Chronic Risk Exposure Level)
H2S	6.1 ppb	30 ppb (Acute Risk Exposure Level) 7 ppb (Chronic Risk Exposure Level)

\*Peak 1-hour values not directly comparable to 24-hour and 8-hour average standards for PM2.5 and ozone, respectively

## V. Summary of PM2.5 and VOC Speciation Analysis

To build a better understanding of the various constituents that compose the overall PM2.5 and Volatile Organic Compound (VOC) concentrations in the Shafter community, in January 2020 the District began operating PM2.5 and VOC speciation sampling at the Shafter-DMV site near the intersection of Walker Street and Pacific Avenues. The collected samples were sent to a third-party laboratory for analysis to determine the contribution of various species of PM2.5, as well as the various species of VOCs in the air sampled in the community.

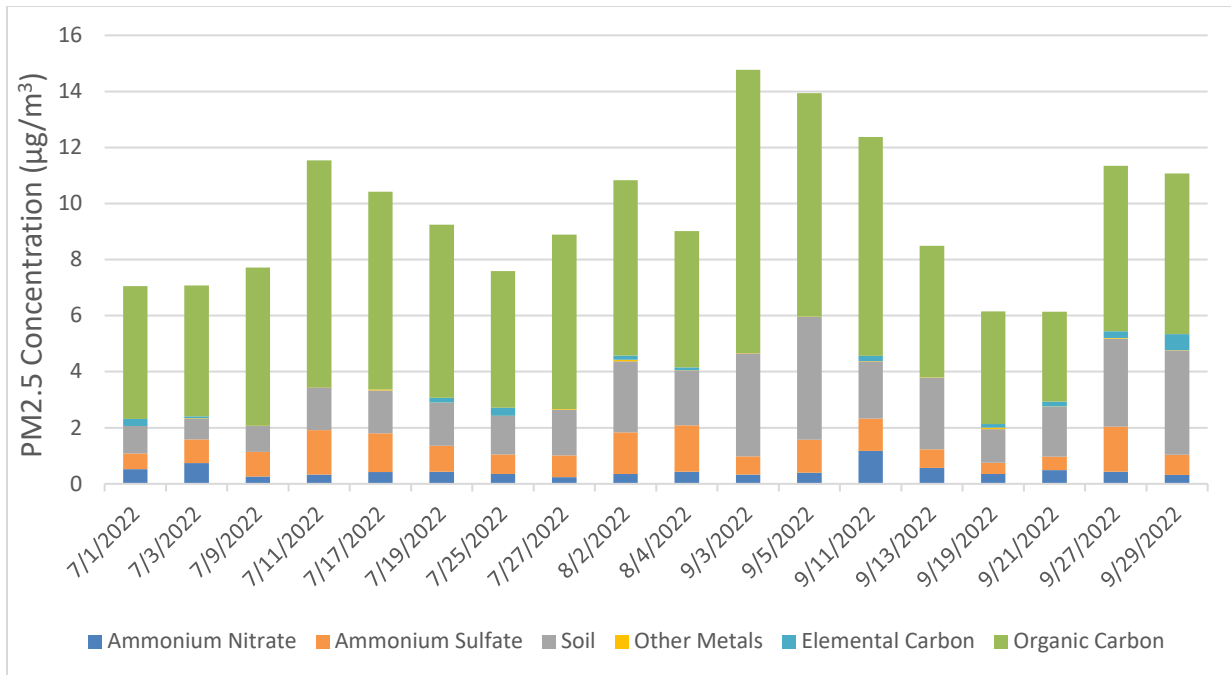
Details on the types of species measured through this analysis, and potential activities, can be found in the appendix to this report.

### **PM2.5 Speciation Analysis**

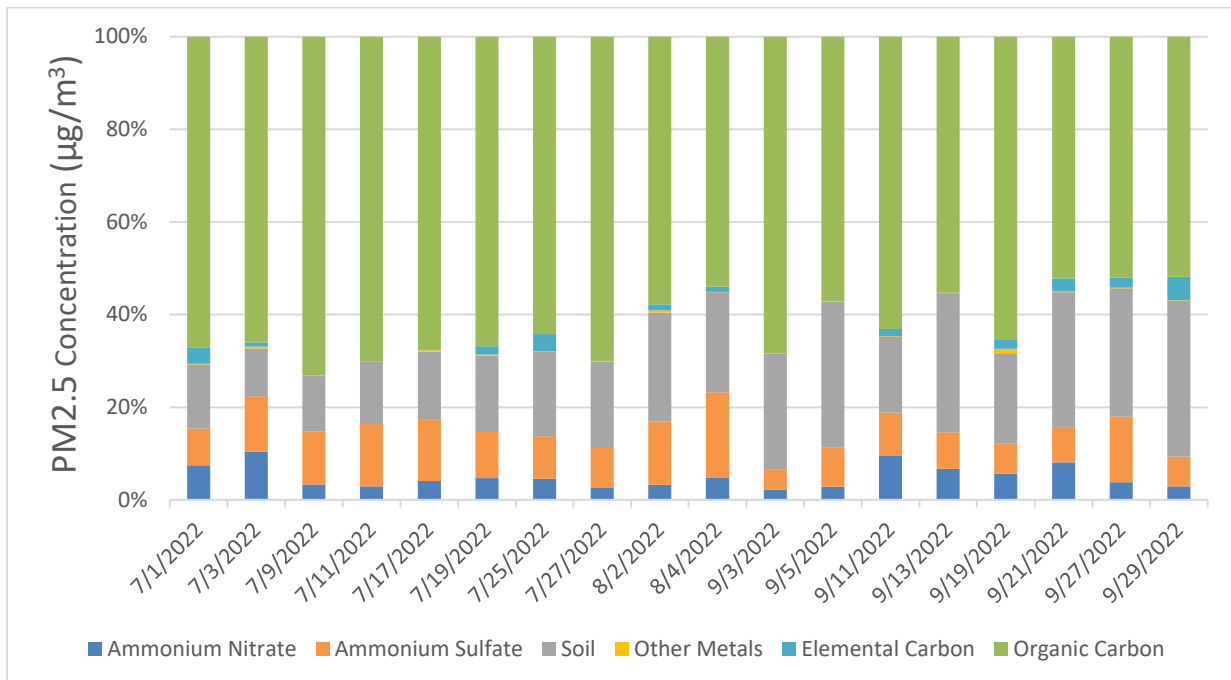
The following figures show the concentration levels and relative comparison of the various PM2.5 species sampled at the Shafter-DMV air monitoring site.

This analysis shows that during this quarter, the highest concentrations of PM2.5 were primarily driven by soil and organic carbon. High winds throughout the quarter caused elevated PM concentrations which is confirmed by the increase in soil within the speciated PM2.5 concentrations at the Shafter-DMV site. High temperatures and dry conditions were present for most of the third quarter in 2022.

**Figure 3 Speciated PM<sub>2.5</sub> Concentrations at Shafter DMV Site**



**Figure 4 Relative Comparison of PM<sub>2.5</sub> Species Measured at Shafter DMV Site**



### VOC Speciation Analysis



VOCs are carbon chained compounds that vaporize in ambient conditions. Among these compounds are BTEX, 1,3-butadiene, PAH, aldehydes, naphthalene, and diethanolamine. These compounds are typically emitted from products such as paints, inks, organic solvents, petroleum products as well as vehicle exhaust. The health effects of these compounds vary but long term exposure can have lasting adverse health effects. A more detailed list of possible VOCs and their health effects is provided by the California Office of Environmental Health Hazard Assessment (OEHHA)<sup>1</sup>.

During this period, the District collected 18 air samples for laboratory analysis. The VOC laboratory analysis is capable of isolating concentrations of 83 VOC species; however, during this period, most VOCs were not detected in the atmosphere.

Acetaldehyde, methanol, ethanol, 2-propanol, and acetone were the primary VOCs detected. Of these five, only acetaldehyde and methanol have an associated Reference Exposure Level (REL), a health risk metric established by the Office of Environmental Health Hazard Assessment (OEHHA). Below is a summary of the potential sources and a comparison of the peak concentration with the associated OEHHA REL. Green colored values represent pollutant concentrations that are below the applicable REL, while orange colored values represent elevated values or values above the applicable REL. All shaded values in the table below are colored green and no concerning concentrations of VOCs were detected in the samples taken.

**Table 2 Summary of VOC Speciation Analysis**

Pollutant	Potential Sources of Emission	Short Term Impact		Long Term Impact	
		Max Measured [24-hour] (ppb)	OEHHA Acute REL [1-hour] (ppb)	Average Measured [Annual] (ppb)	OEHHA Chronic REL [Annual] (ppb)
Methanol	Automobile exhaust, solvent use, and naturally from vegetation and microbes	49.9	21,367	16.3	3,052
Acetaldehyde	Wood combustion in fireplaces and woodstoves, coffee roasting, burning of tobacco, vehicle exhaust fumes, and coal refining and waste processing	11.4	261	7.0	78

## Ammonia Analysis

<sup>1</sup> <https://oehha.ca.gov/air/general-info/oehha-acute-8-hour-and-chronic-reference-exposure-level-rel-summary>

In September of 2020, per request from the Community Steering Committee, the District commenced ammonia sampling at the Shafter DMV air monitoring site. During this quarter, the ambient ammonia concentration levels in all samples collected continue to remain lower than the laboratory's detection limit.

## VI. Appendix of Pollutant Species and Comparative Analysis

### **Overview of PM2.5 Species**

The nature and formation of PM2.5 in the San Joaquin Valley is highly complex as it can be composed of any material that has a diameter of 2.5 microns or less. PM2.5 can be emitted directly as primary PM2.5 from various sources or formed secondarily through chemical reactions in the atmosphere. The resulting ambient PM2.5 mixture can include aerosols (fine airborne solid particles and liquid droplets) consisting of components of nitrates, sulfates, organic carbon, black carbon, soil, trace metals, and more.

PM2.5 in the Valley is comprised of many species that contribute to the total PM2.5 mass. This complex mixture is attributable to emissions from stationary, mobile, and area-wide sources, as well as naturally occurring emissions. Although the list of species contributing to PM2.5 in the Valley is lengthy, it can be grouped into larger representative categories. The following is a brief description of each of these larger species categories:

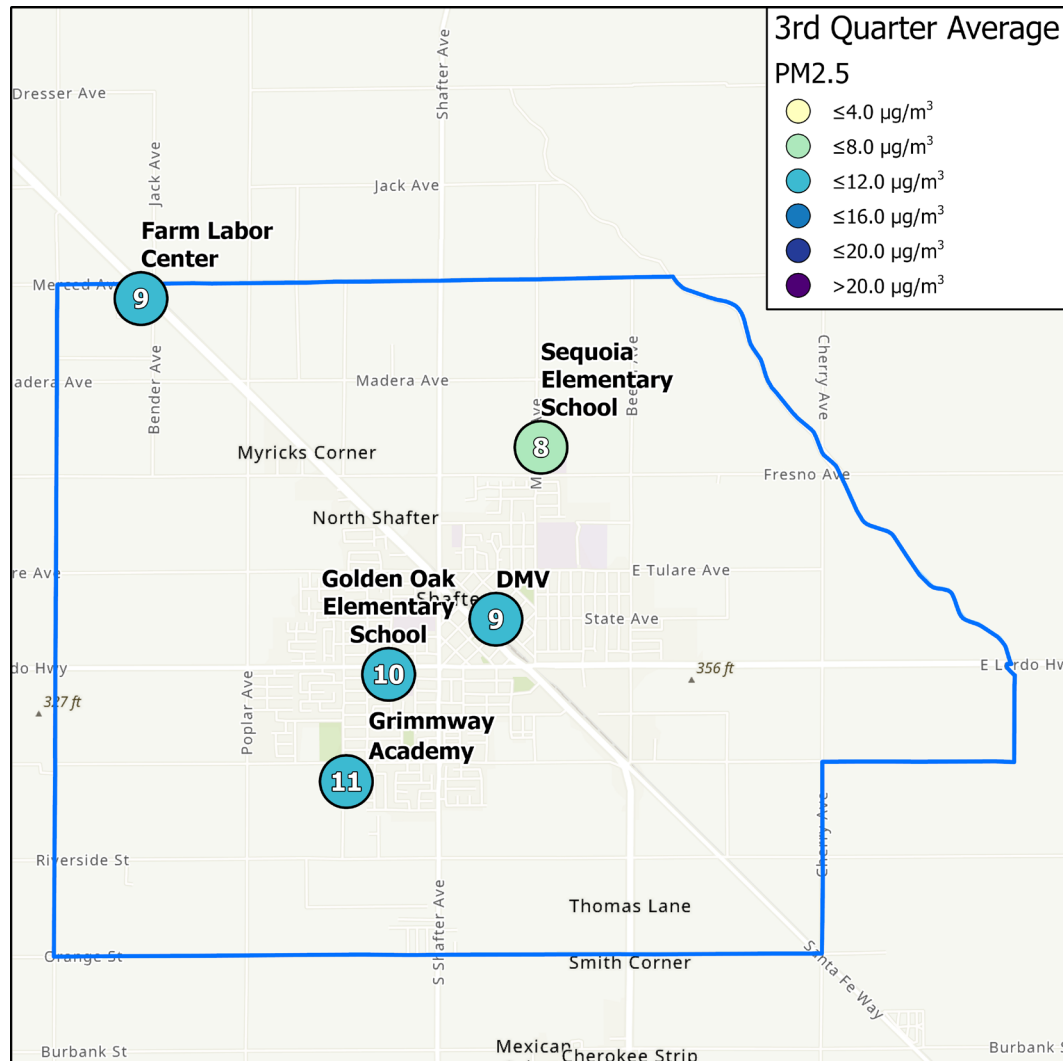
- **Ammonium Nitrate:** Ammonium nitrate is formed from the reaction of ammonia and nitric acid, where the nitric acid is formed from emissions of nitrogen oxides.
- **Ammonium Sulfate:** Ammonium sulfate is formed from the reaction of ammonia and sulfuric acid, where the sulfuric acid is formed primarily from emissions of sulfur oxide, with smaller amounts forming from direct emissions of sulfur.
- **Organic carbon:** Organic carbon (OC) are generated as primary organic aerosol, predominantly through the combustion of hydrocarbons. Key sources include cooking, industrial processes, mobile source exhaust, tire wear, and wood burning. Secondary organic aerosols are formed from the oxidation of motor vehicle hydrocarbons, wood burning, solvent use, and industrial processes.
- **Soil:** This category consists of road dust and soil dust that are entrained in the air from activity, such as soil disturbance or airflow from traffic.
- **Other Metals:** Identified as components from soil emissions or found in other particulates having been emitted in connection with combustion from engine wear, brake wear, and similar processes. Certain metals are also emitted from the use of fireworks.

### Comparative Analysis of Measured Pollutants

The following spatial comparison map depicts the quarterly PM<sub>2.5</sub> averages and locations of each site within the community. Good air quality is represented in the map by the light yellow, light green, and light blue colors. Moderate air quality and above is represented by darker blues and purples based on how high the quarterly average is for that site.

Quarter	Bakersfield-California	Corcoran	Shafter-DMV	Grimmway Academy	Golden Oak Elementary	Farm Labor Center	Sequoia Elementary
2022 Q3	10.5	11.3	9.2	10.8	9.7	8.7	7.9

### *Spatial Comparison of PM<sub>2.5</sub> Quarterly Averages*



### **Pollutant Concentration Heat Maps**

The following Heat Maps provide a comparative analysis of various pollutants being measured at the air monitoring sites as a part of the community air monitoring network. The color scales for each table are based on the Air Quality Index (AQI) or the associated Reference Exposure Level (REL).

The 3<sup>rd</sup> quarter of 2022 was dominated by high pressure systems that produced triple digit heat and poor dispersion across the Valley. Monsoonal moisture that streamed into California produced thunderstorms that caused wildfires to ignite in the northern California and Sierra Nevada mountains. The poor dispersion conditions and strong temperature inversions associated with high pressure systems exacerbated smoke impacts in the Valley.

Low pressure systems briefly passed through the Pacific Northwest, allowing for improved dispersion, which was enough to lift some of the smoke out of the Valley. The improved dispersion conditions were very short-lived and were not sufficient enough to clear pollutants out of the Valley floor.

Stable conditions remained prevalent across the Valley through September. Extended periods of high temperatures caused 8-hour Ozone to exceed the federal standard on a few days. PM<sub>2.5</sub> remained below the 24-hour federal standard throughout the quarter.

