



Overview: Community Emission Inventory CARB Mobile and Area Source Emissions

**South Central Fresno
AB 617 Community Steering Committee Meeting
April 10, 2019**

Alejandra Cervantes, Robbie Morris, Jenny Melgo

**Air Quality Planning and Science Division
California Air Resources Board**

Air District & CARB Staff Collaboration



Stationary Sources:
Power Plants, Refineries, Industry

District



Area Sources:
Residential Wood Combustion, Consumer
Products, Pesticides

CARB/District



On-road Mobile Sources:
Cars, Trucks

CARB



Off-road Mobile Sources:
Forklifts, Tractors, Transport Refrigeration
Units

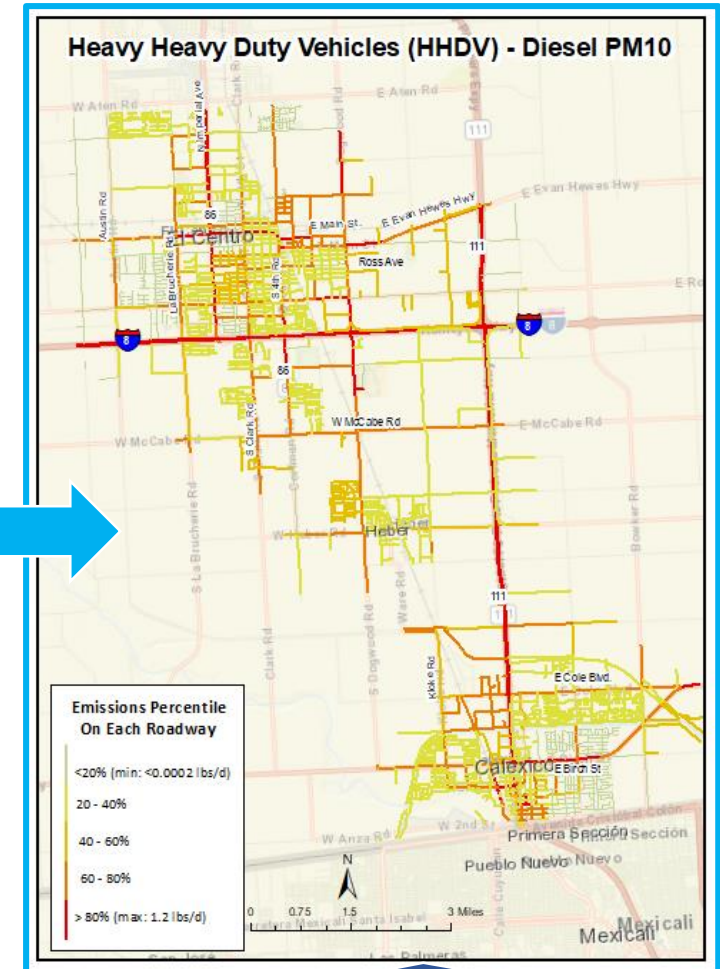
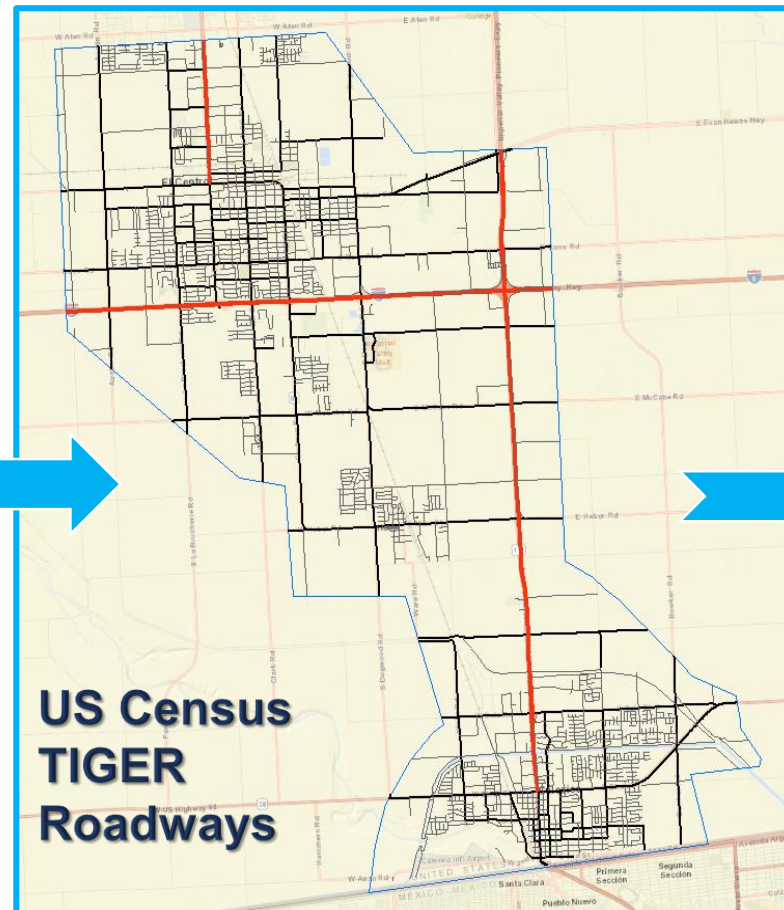
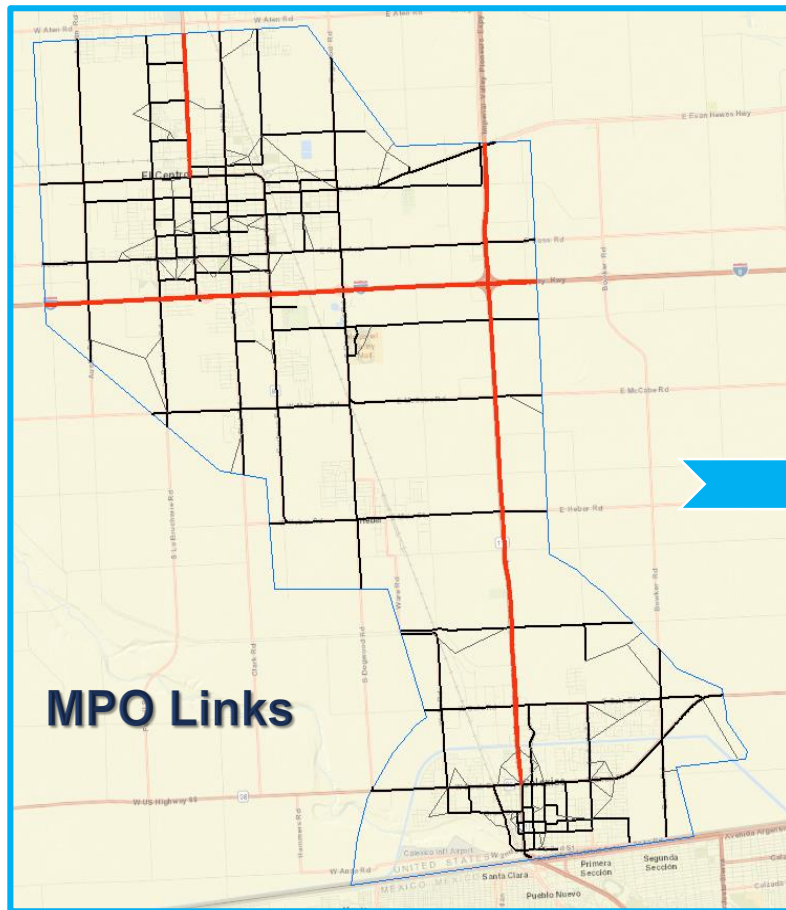
CARB

April - May, 2019

Inventory Development - What are we doing



On-Road Mobile Sources



Allocate vehicle miles traveled (VMT) to all roads in community

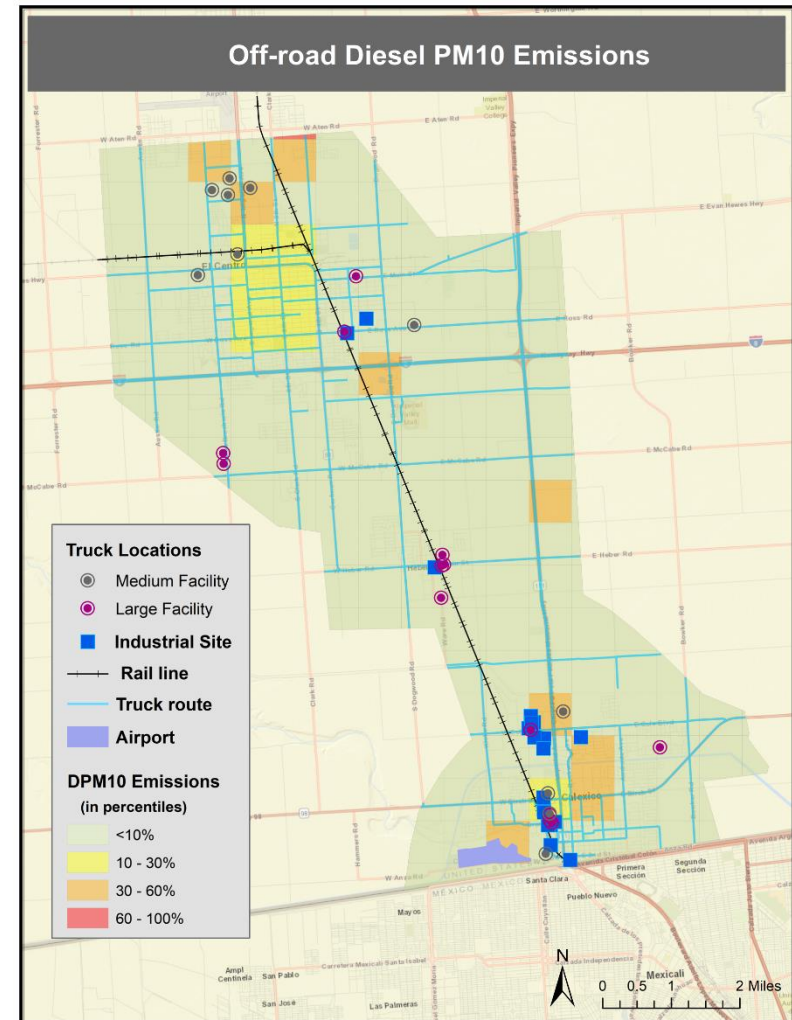
Apply emission factors to VMT to calculate emissions on roads

Off-Road Mobile Sources

- **Facility Sources:**
(e.g., forklifts, cargo handling equipment, locomotives)
- Specific location of operation and facility level data



- **Non-facility Sources:**
(e.g., construction/ ag equipment, portable engines)
- No specific location of operation or facility level data



Existing activity data from reporting requirements, voluntary reporting, surveys, or purchased data sources

Emissions will be put at known locations, when possible

Area Sources



Sources that can be moved to actual emission location:

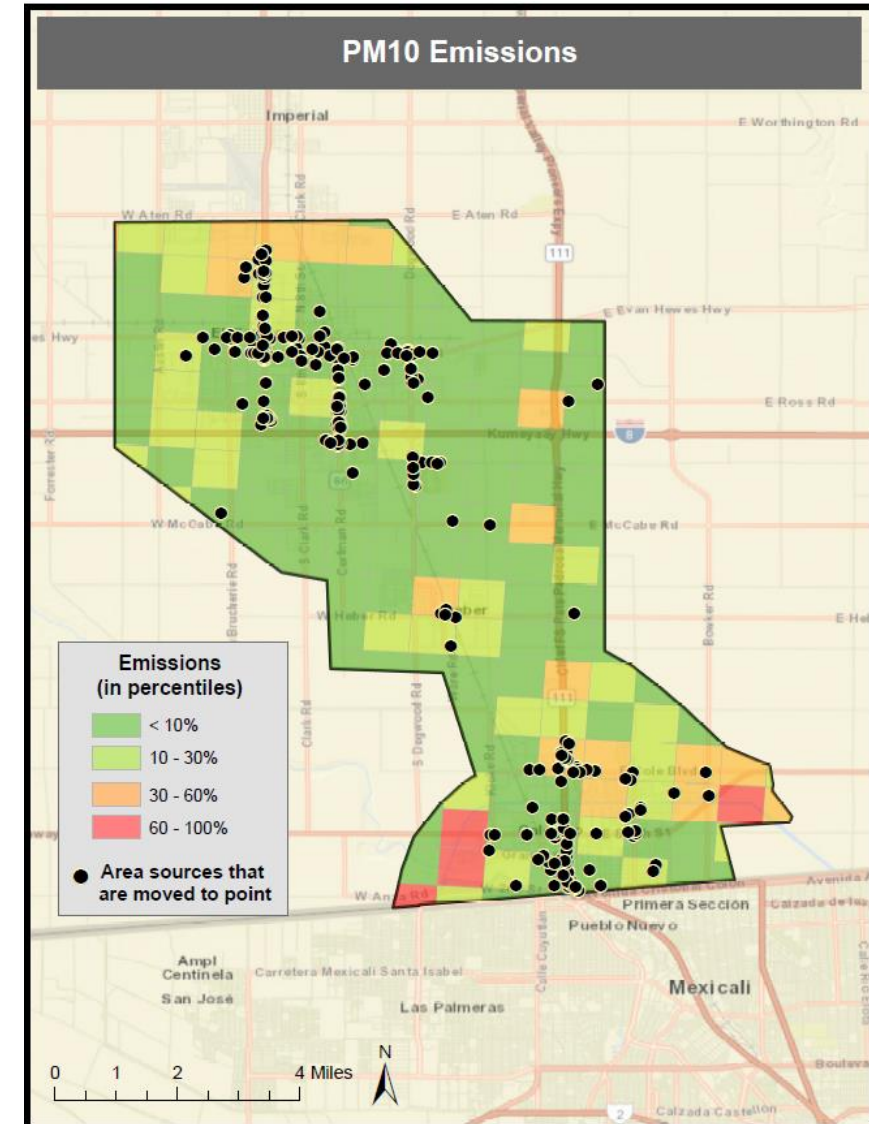
Small emission sources spread over an area, but with specific locations (e.g., gas stations, dry cleaner, auto body shops, print shops)



Sources that operate and emit over large areas:

Emission sources that lack specific location detail (e.g., consumer products, road dust, architectural coating)

Move sources to their actual emission location, when possible



CARB Community Emission Inventory Staff

Charanya Varadarajan

- Manager, Area Source Improvement and Community Inventory Development Section
- charanya.varadarajan@arb.ca.gov 916-322-1223

Alejandra Cervantes

- Community Inventory Staff Contact for Shafter and Fresno
- alejandra.cervantes@arb.ca.gov 916-327-5790

Robbie Morris

- Community Inventory Staff Contact for Shafter and Fresno
- robbie.morris@arb.ca.gov 916-327-0006