

Assembly Bill 617 Community Selection Process for Year 3

August 11, 2020

San Joaquin Valley Air Pollution Control District

Valley Challenges Unmatched

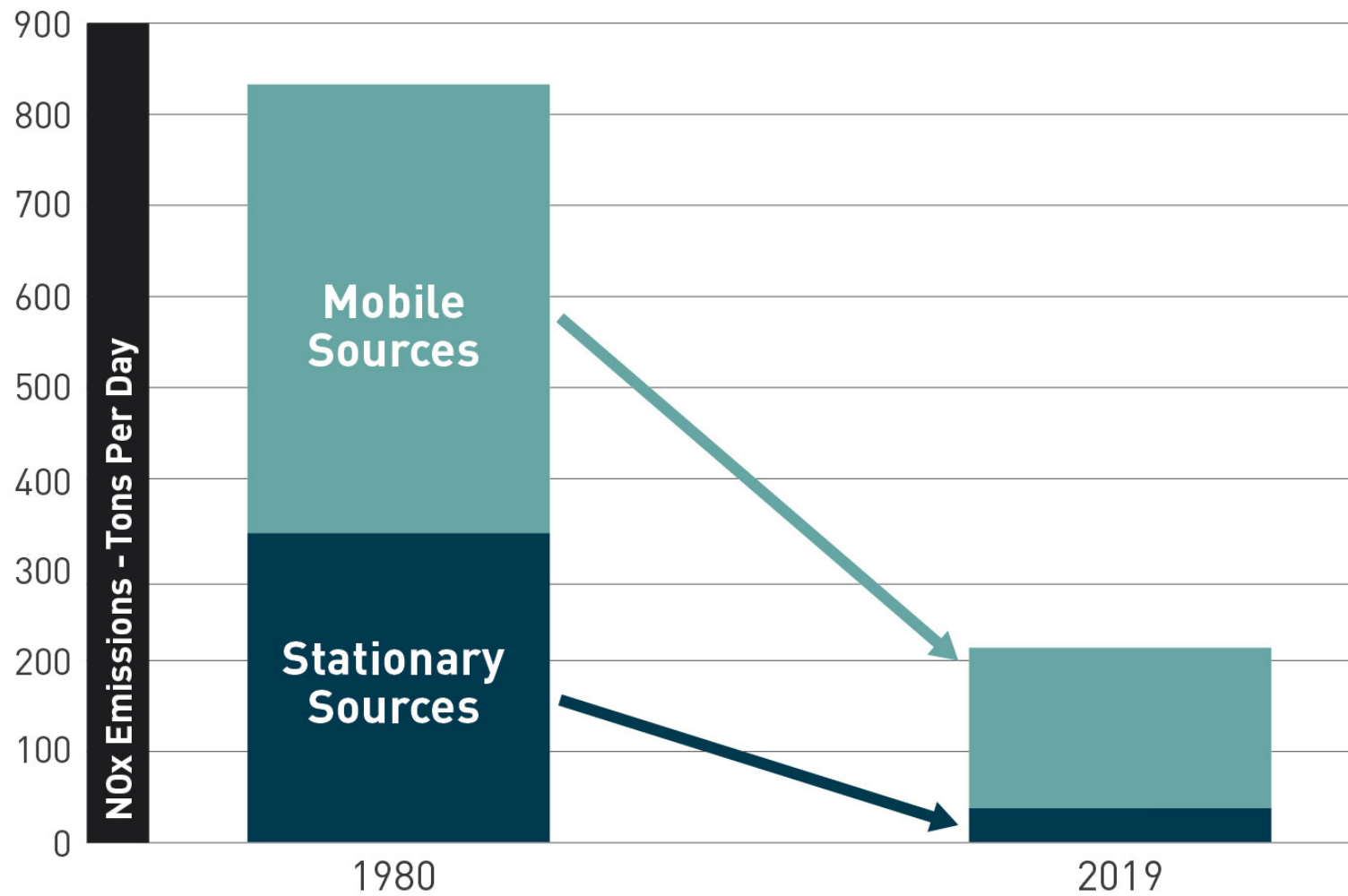
- Surrounding mountains and meteorology create ideal conditions for air pollution formation and retention
- High poverty and unemployment rates (20 of 30 most disadvantaged communities in state)
- High rate of population growth
- I-5 and Hwy 99 (major transportation arteries) run through Valley



Clean Air Efforts in the San Joaquin Valley

- Toughest air regulations on businesses and industries large and small
- Toughest air regulations on farms and dairies
- Reduction of risk from existing and new stationary sources through District's permitting and air toxics hot spots programs
- Over \$3 billion dollars of public/private investment on incentive-based emissions reductions
 - 173,100 tons of emissions reduced
- Toughest regulations on cars and trucks
- Toughest regulations on consumer products and what people can do inside their homes
- Work continues to identify additional emission reductions necessary to meet the latest federal air quality standards

Major Reductions in Pollution

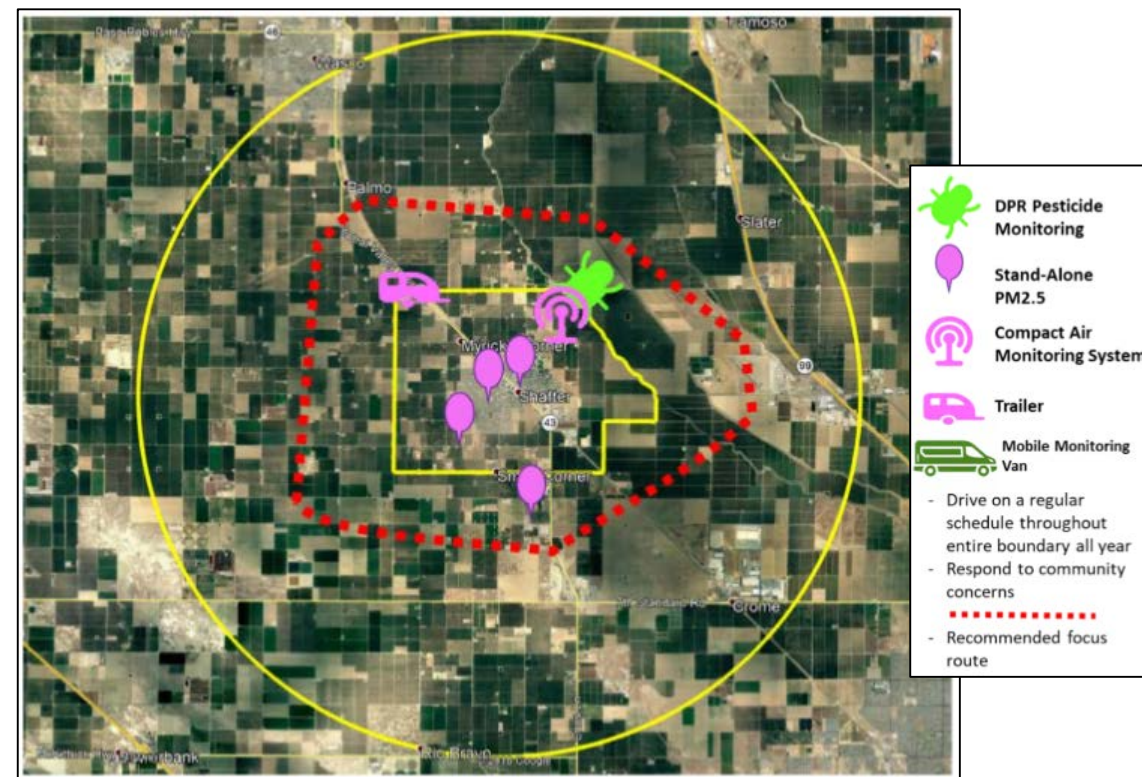


Assembly Bill 617 Overview

- AB 617 passed by state legislature in 2017 to address potentially high cumulative exposure burdens from toxics and criteria pollutants in some communities
- Through robust public engagement process, CARB and air districts must develop and implement community specific:
 - Community air monitoring plans
 - Community emission reduction programs (CERP)

Community Air Monitoring Plan

- AB 617 includes requirements for air districts to deploy air monitoring in communities selected by CARB
 - Year 3 Communities to have air monitoring in place by 2022
 - Supplements existing monitoring in/near selected community
- Community access to air monitoring information



Community Air Monitoring

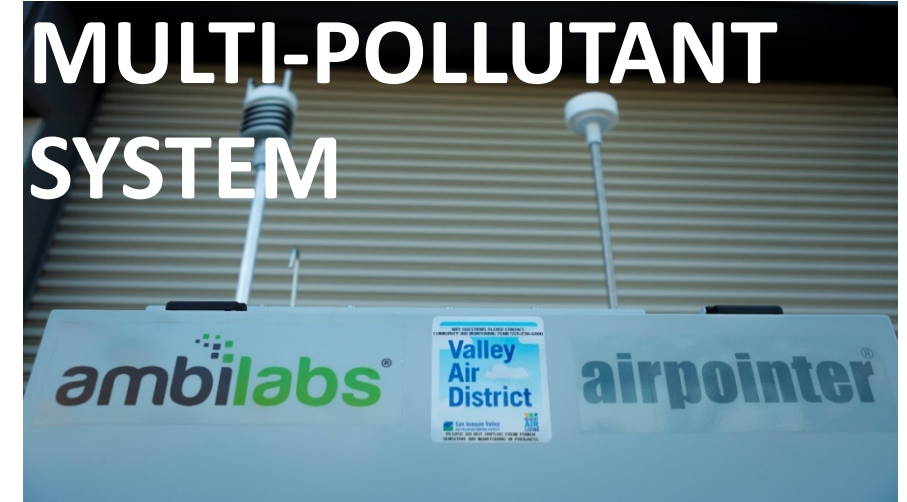
VAN



TRAILER



MULTI-POLLUTANT
SYSTEM



PM2.5 MONITOR



Community Emissions Reduction Programs (CERP)

- Community Emissions Reduction Program (CERPs) developed through a Community Steering Committee process
- CERPs lay out plan to reduce pollution in selected communities
- Elements of a CERP include:
 - Understanding the community
 - Identifying challenges facing the community
 - Providing solutions to address challenges
 - Implementation schedule
 - Enforcement plan
 - Metrics for tracking progress

AB 617 Implementation Progress for Year 1 and 2 Communities

- **Year 1 Communities:** South Central Fresno and Shafter
 - CERPs approved by CARB February 2020
 - Implementation of CERP measures ongoing
 - Community air monitoring plan in place
- **Year 2 Community:** Stockton
 - Steering Committee, community boundary established
 - Community air monitoring plan discussions
 - CERP measure discussions
 - CERP due January 2021



AB 617 Year 3 Implementation Timeline



AB 617 Year 3 Community Selection Methodology

- Based on public process, District/CARB have utilized multiple principles for community prioritization:
 - CalEnviroScreen scores
 - Equitable distribution of AB 617 efforts across diverse community types (urban and rural)
 - Community support through self-nominations to CARB and District
 - Community's capacity and interest to participate and engage in air quality activities

AB 617 Year 3 Community Selection Methodology

2018

- Factors considered
 - Exposure to air pollution
 - Sensitive populations
 - Other measures of vulnerability
- Regional diversity and sources

2019

- Prior year considerations
- 2018 Board direction to prioritize monitoring communities
- Consider resources available, and existing communities need

2020

- All prior years considerations
- Board direction (December 2019)
- Budget, anticipate a very limited number of communities



Year 3 Communities Strongly Supported Through CARB's Community Selection Process

EXISTING MONITORING COMMUNITIES

- Richmond- San Pablo (Bay Area)
- South Sacramento – Florin (Sacramento)

CONTINUALLY SUPPORTED COMMUNITIES*

- East Contra Costa County (Bay Area)
- East Oakland (Bay Area)
- Eastern San Francisco (Bay Area)
- San Jose (Bay Area)
- Tri-Valley (Bay Area)
- Vallejo (Bay Area)
- Northern Imperial County Corridor- Bombay Beach, Brawley, Calipatria, Desert Shores, Niland, Salton City, Salton Sea Beach, Salton Sea, Seeley, Westmorland (Imperial)
- South Natomas (Sacramento)
- Norwood, Old North Sacramento, Del Paso Heights (Sacramento)
- International Border Community - Otay Mesa, San Ysidro (San Diego)
- Arvin/Lamont (San Joaquin)
- La Vina (San Joaquin)
- Madera (San Joaquin)
- Maywood, Commerce (east), Vernon, Bell (South Coast)
- Pacoima, North Hollywood, Sun Valley, San Fernando (South Coast)
- South Los Angeles, South Central Los Angeles, Hyde Park (South Coast)



**Communities with strong support from air districts, and communities to be recommended for selection in upcoming years.*

Community Feedback Needed

- Methodology for identifying and prioritizing Valley communities for Year 3 recommendations to CARB
- Nominations for Valley communities for Year 3 consideration
 - <http://community.valleyair.org/community-identification>
 - Recommendations requested by August 21, 2020
- District Governing Board to consider community recommendations to CARB at September 17, 2020 public meeting

Contact

Mail: San Joaquin Valley APCD
1990 E. Gettysburg Ave
Fresno, CA 93726

Phone: (559) 230-6000

Fax: (559) 230-6064

Web: <http://community.valleyair.org/>

Email: AB617@valleyair.org

Open Discussion

webcast@valleyair.org