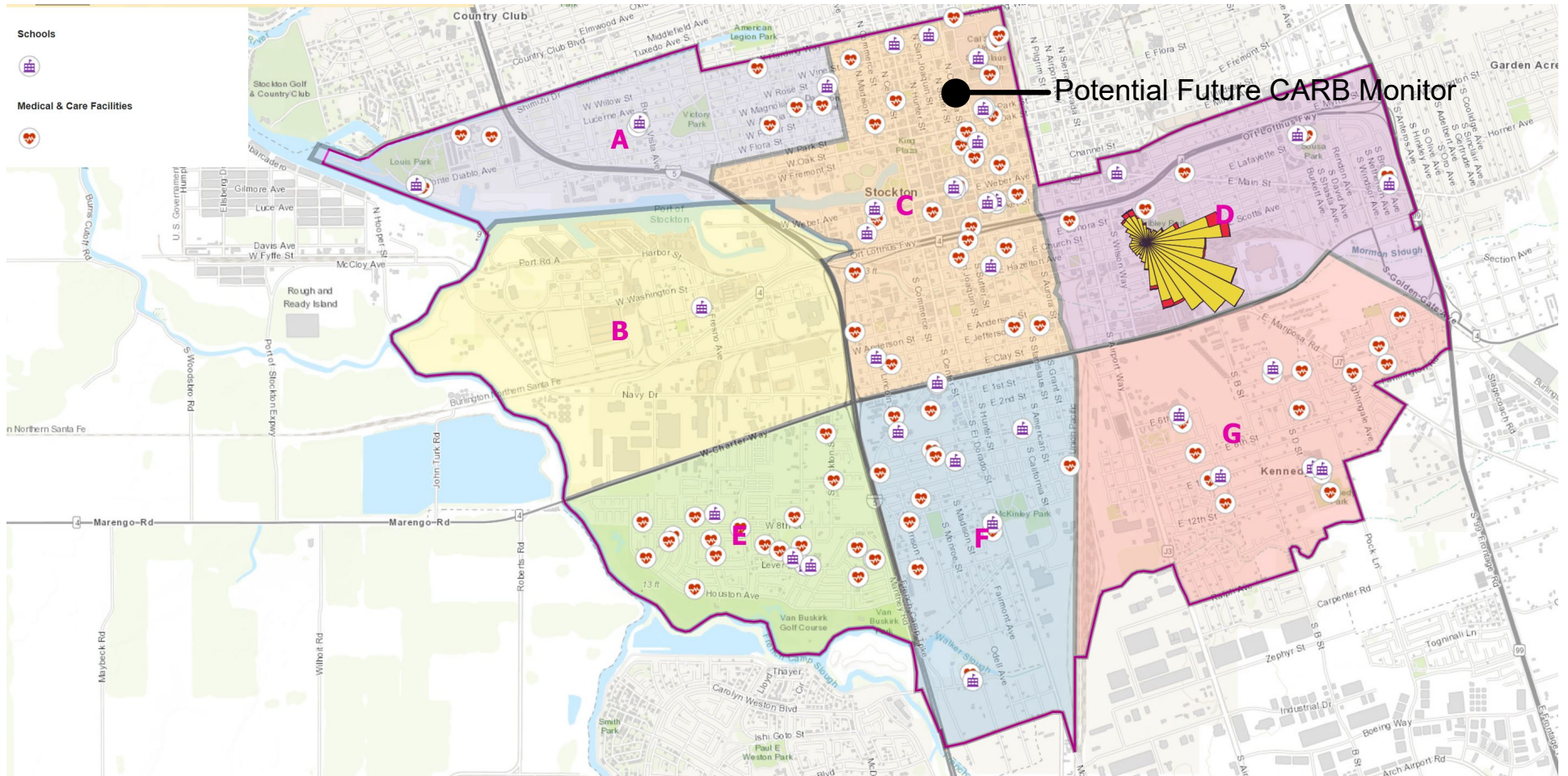


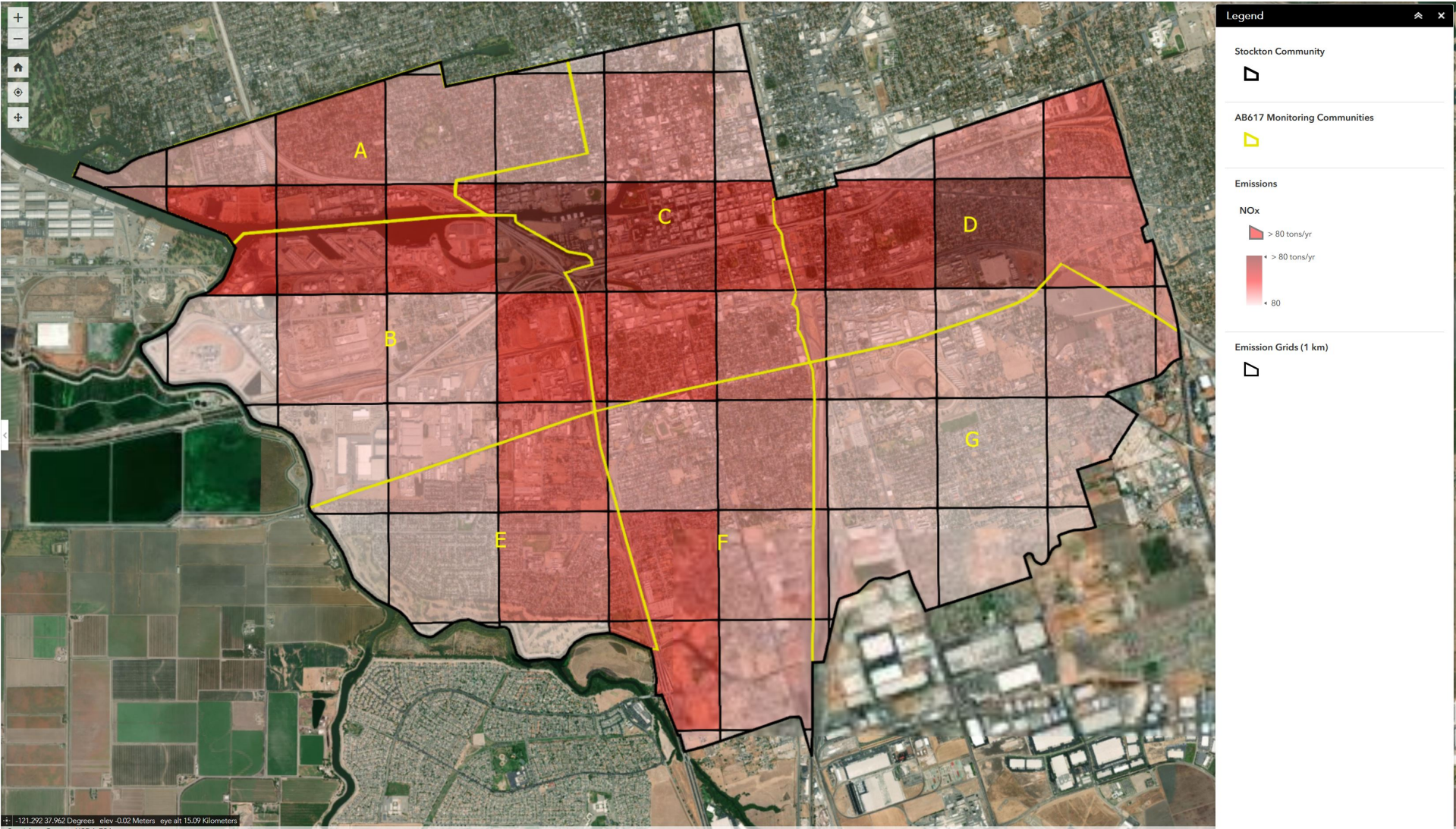
## Schools, Medical Facilities, and Care Facilities



5-year average Wind Speed and Direction  
Wind is usually blowing from Northwest to Southeast  
Wind rose on map at current CARB Stockton Monitor  
Will move to new site due to planned building demolition

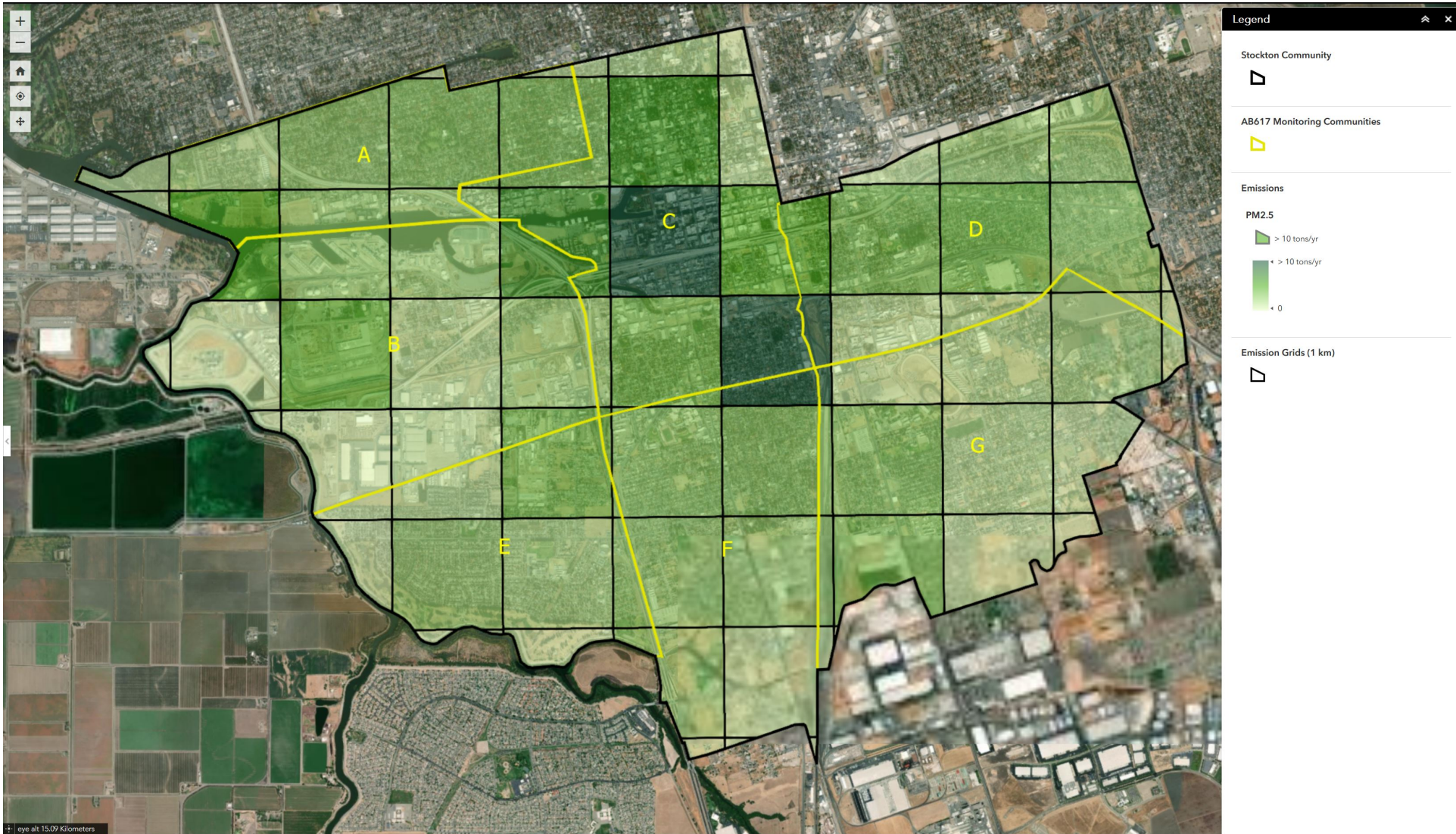


# NOx Emissions



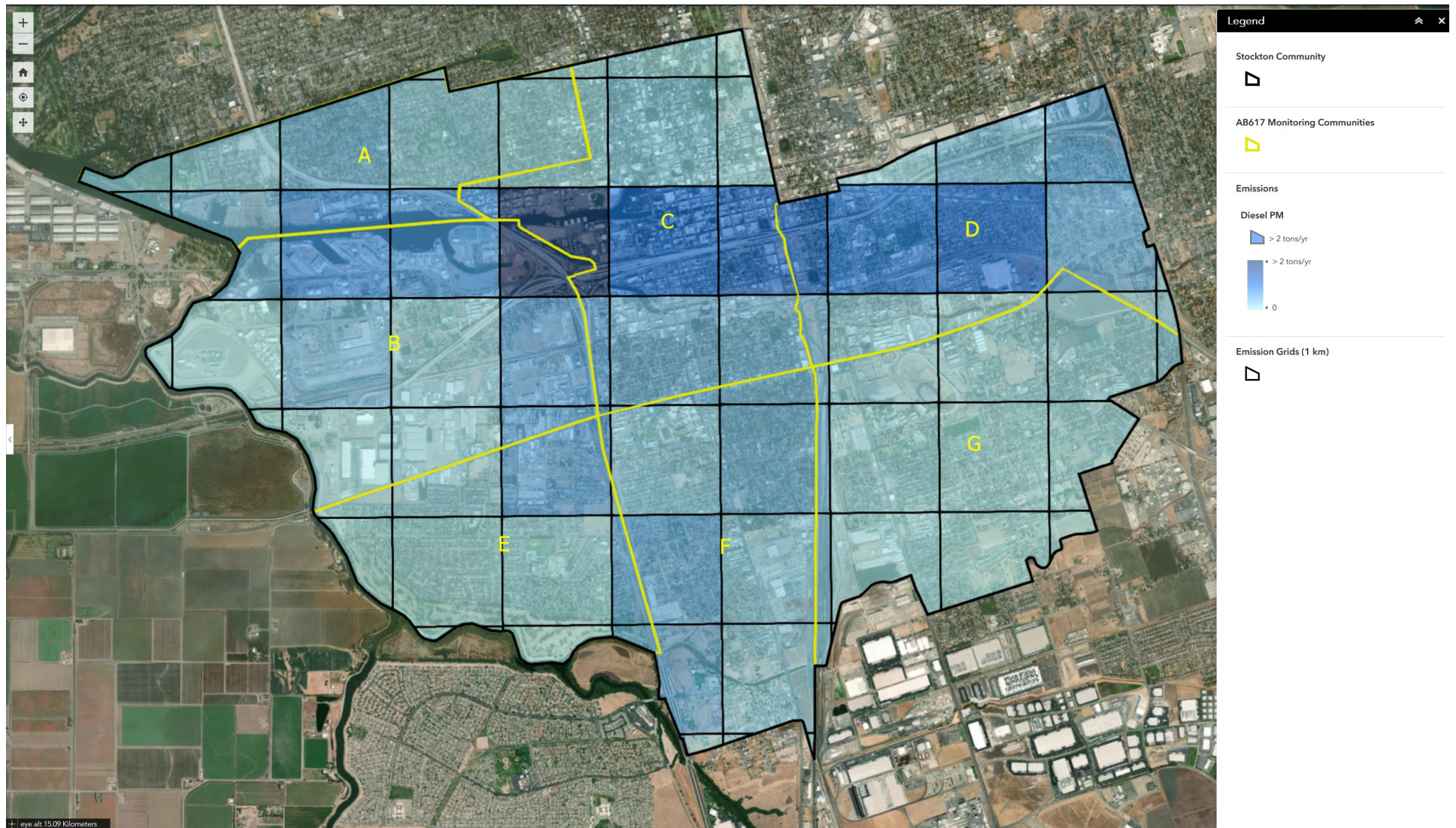


## PM2.5 Emissions



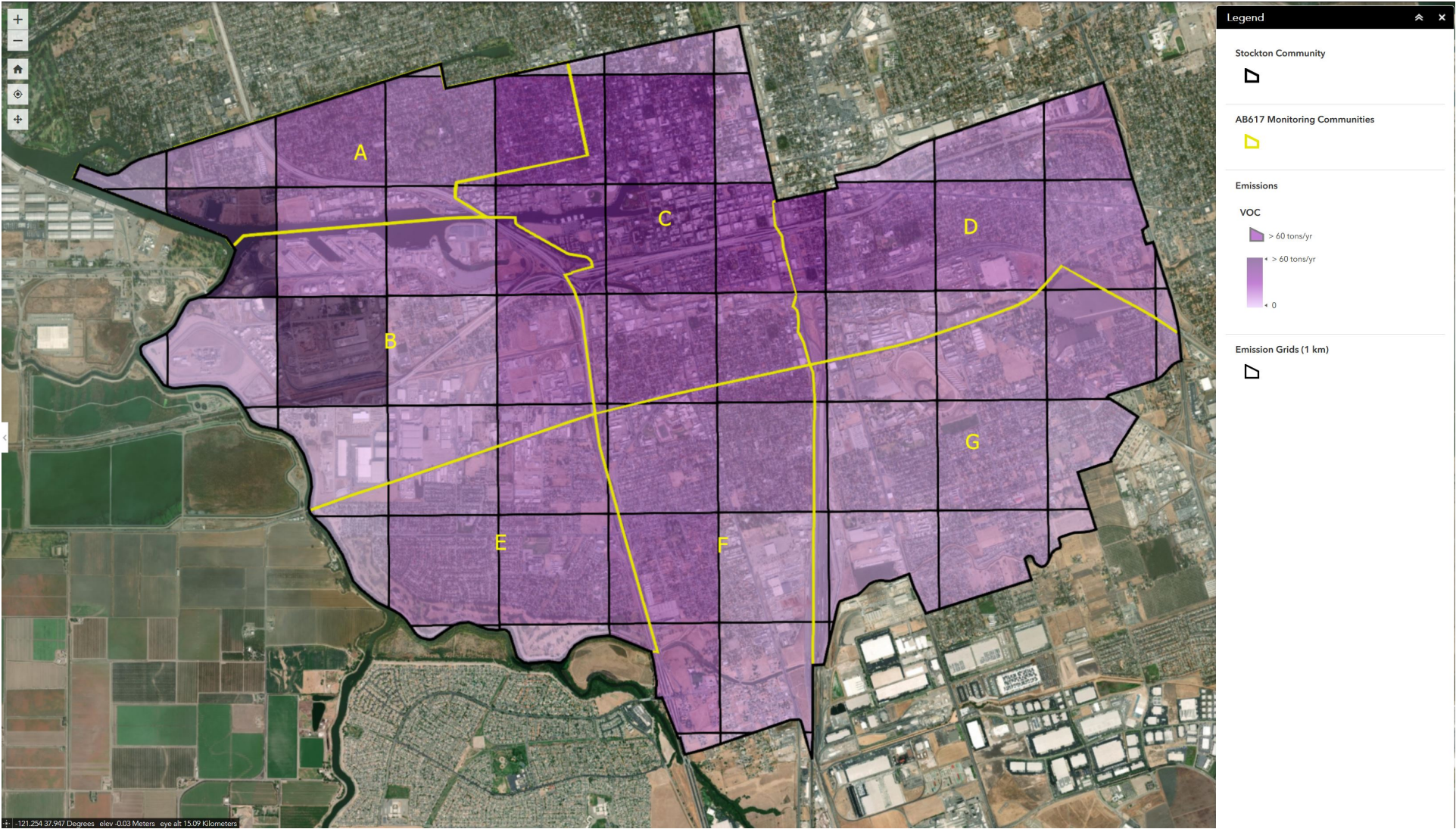


# Diesel Particulate Emissions





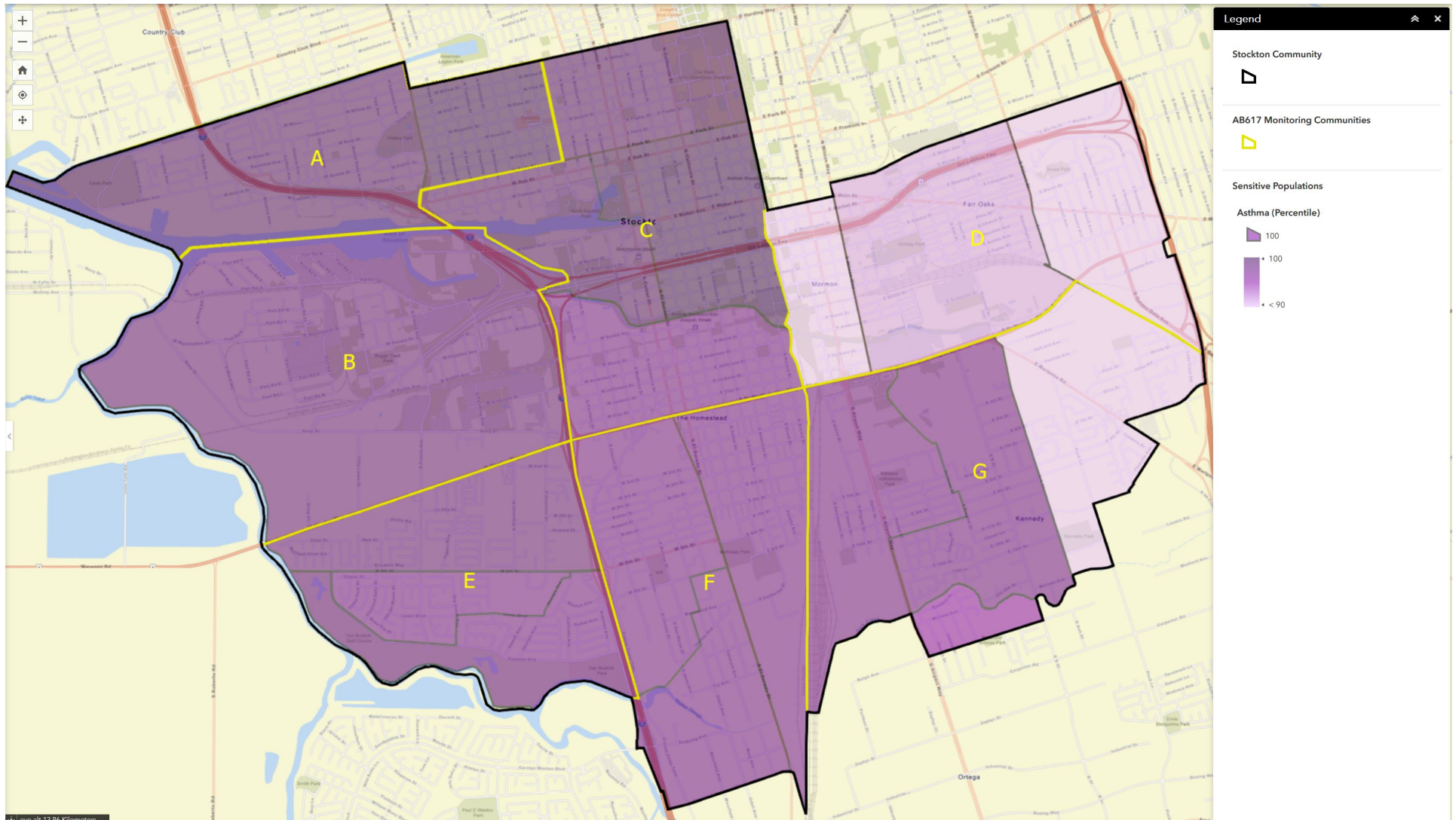
# Volatile Organic Compound (VOC) Emissions





# ASTHMA INDICATOR

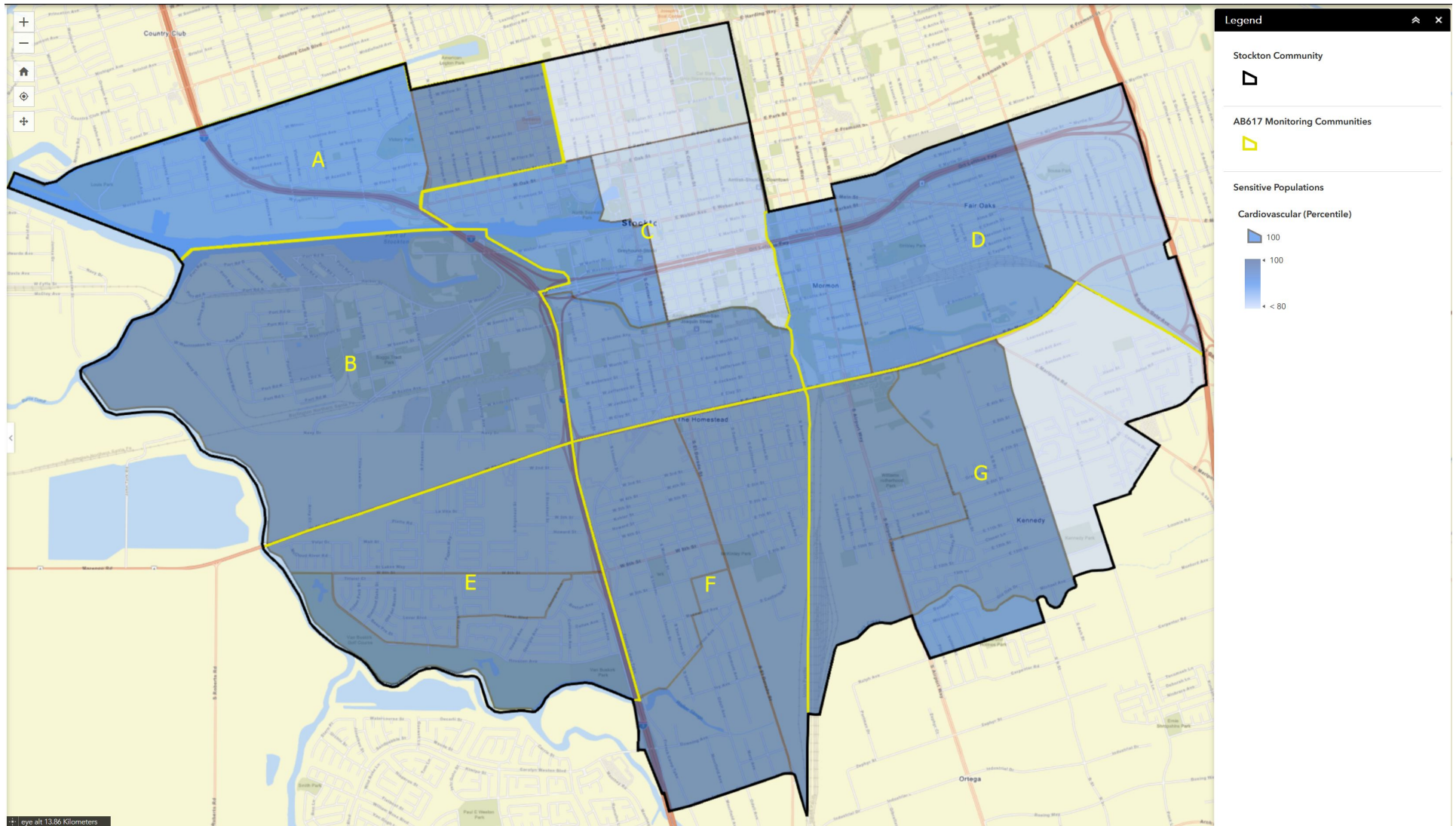
Spatially modeled, age-adjusted rate of emergency department visits for asthma. Averaged over 2011-2013.  
CalEnviroScreen 3.0, percentile compared to all of California



# CARDIOVASCULAR DISEASE INCDICATOR

Spatially modeled, age-adjusted rate of emergency department visits for acute myocardial infarction (AMI).  
Averaged over 2011-2013.

CalEnviroScreen 3.0, percentile compared to all of California





# LOW BIRTH WEIGHT INDICATOR

Percent low birth weight. Averaged over 2005-2012.  
CalEnviroScreen 3.0, percentile compared to all of California

