

# Southside Stockton Youth Air Quality Presentation

By: Glenabel Torenó and Gloria Alonso Cruz



*Little Manila Rising*

**YOUTH ADVOCATES**

For Social Justice



# Outline

- Principles
- Field Observations:
  - Area by Knife River
  - Charter Way and Fresno Ave
  - Waste Incineration
  - Schools
  - Port





# Principles: Equity, Education, and Air Pollution

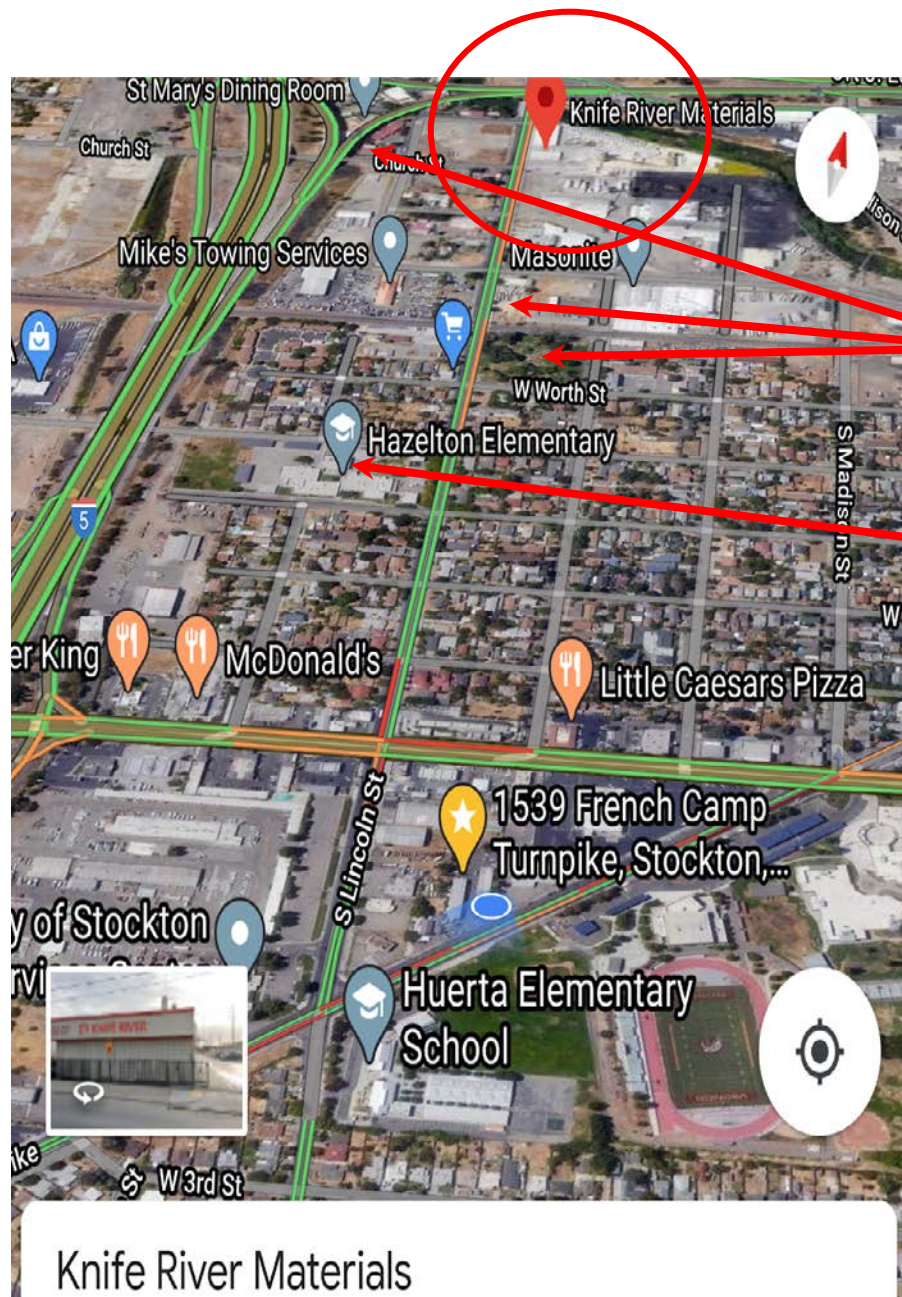
- Air pollution is an underlying factor that impacts the future health of entire generations in EJ communities which cannot be fully protected where they benefit from public services and/or community resources.
- The air quality that surrounds South Stockton residents impacts public health and the environmental conditions around important services/infrastructure in EJ communities. These include schools, dining rooms, parks [...]
- For instance, about 1 in 4 children have asthma in the SJ valley. Environmental conditions impact existing respiratory problems in students which influence their school performance. EJ issues are intertwined with other social issues affecting young populations such as the school to prison pipeline.



# Area by Knife River







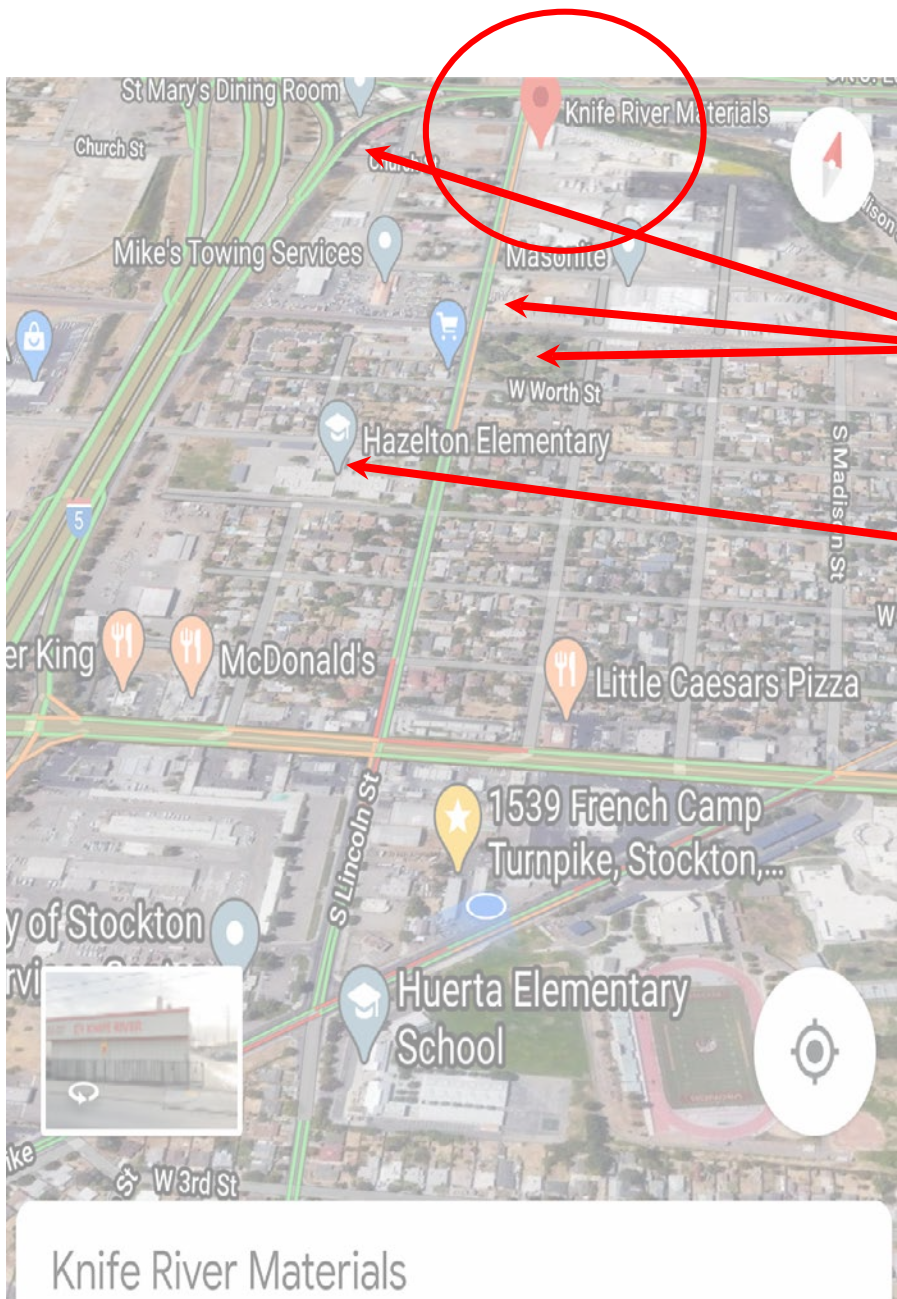
Knife River is in close proximity to other industries, public spaces, community resources, schools and residential areas.

All of which are within a mile radius from the said company site, including Hazeltan Elementary school.

There is a park right next to a Tree cutting company called the West Coast Arborists and the train tracks. Next to that are residential homes.







Knife River is also in a very close proximity to other industries, public spaces, schools and residential areas.

All of which are within a mile radius from the said company site, including Hazeltan Elementary school.

There is a park right next to a Tree cutting company called the West Coast Arborist and the train tracks. Next to that are residential homes.

The environmental conditions within this area have some of the highest percentiles. Pollution burden percentile of 99, including a 94 percentile in PM2.5

400 S Lincoln St, Stockton, CA 95210	
Census Tract: 6077000700	
Population:	5,269
CalEnviroScreen 3.0 Percentile:	95-100% (highest scores)
Pollution Burden Percentile:	99
Population Characteristics Percentile:	96
<u>Ozone:</u>	53
<u>PM 2.5:</u>	94
<u>Diesel:</u>	67
<u>Pesticides:</u>	74
<u>Toxic Releases:</u>	58
<u>Traffic:</u>	69
<u>Drinking Water:</u>	29
<u>Cleanups:</u>	98
<u>Groundwater Threats:</u>	97
<u>Hazardous Waste:</u>	43
<u>Impaired Water:</u>	94
<u>Solid Waste:</u>	94
<u>Asthma:</u>	97
<u>Low Birth Weight:</u>	32
<u>Cardiovascular Rate:</u>	95
<u>Education:</u>	97
<u>Linguistic Isolation:</u>	94
<u>Poverty:</u>	98
<u>Unemployment:</u>	89
<u>Housing Burden:</u>	91

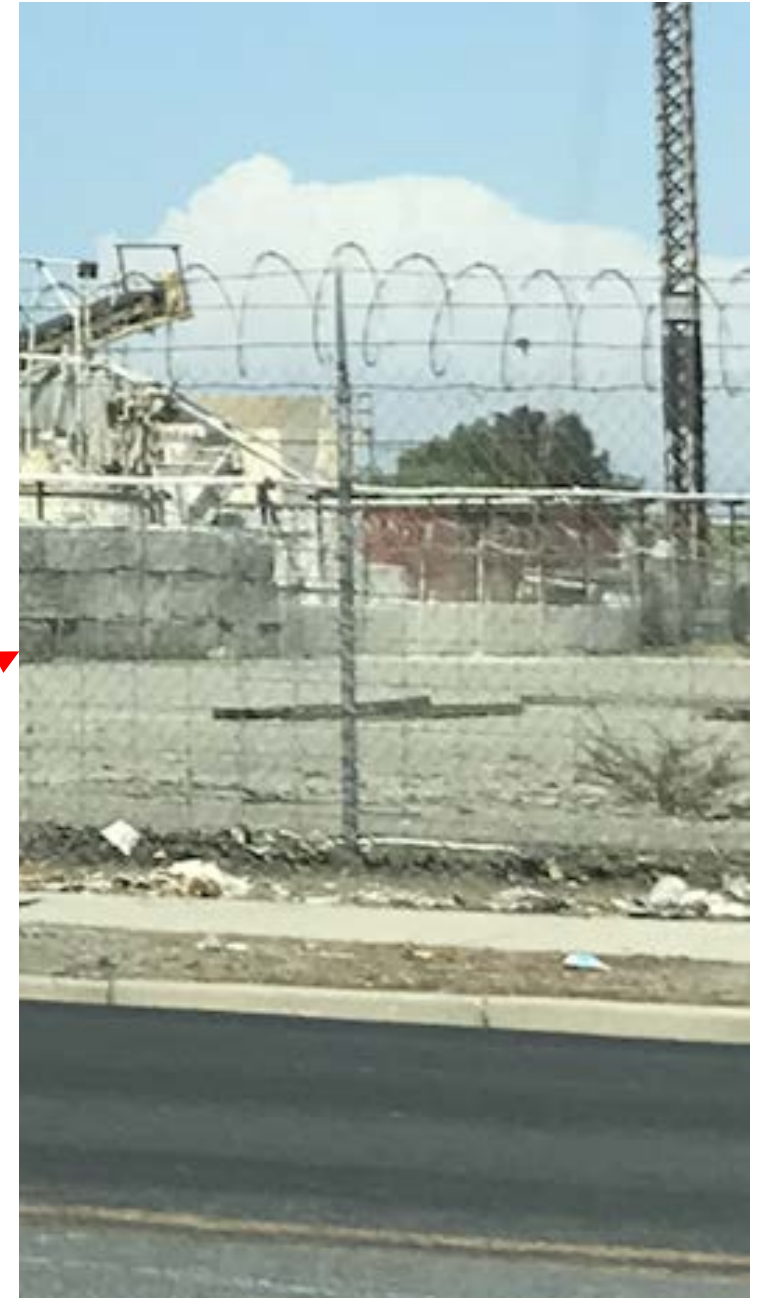


Several trucks have also been observed to be idling right next to the said site.



Observation: Knife River materials has this **tall structure** in the center of their site, similar to a conveyor of some sort, where materials go down from the upper portion of the structure. **Once the materials reach the very bottom there are dust particles that are emitted to the air.**







# Charter Way and Fresno Ave







- All along Charter Way and Fresno Ave, several truck companies are present.
- 0.7 miles away is San Joaquin Elementary School.
- There are trucks idling within these streets and very close to residential areas.

- Some of the highest population characteristics percentile are: cleanups, PM 2.5, traffic and diesel.
- Based on CalEnviroScreen 3.0, this area is within the 95-100%





There are high levels of truck traffic in industrial areas.

Trucks contribute to pollution through the emission of carbon monoxide and are harmful to vulnerable environments such as residential areas.

Pollution Burden	
Percentile:	100
Population Characteristics	
Percentile:	98
<u>Ozone:</u>	53
<u>PM 2.5:</u>	84
<u>Diesel:</u>	74
<u>Pesticides:</u>	61
<u>Toxic Releases:</u>	70
<u>Traffic:</u>	78
<u>Drinking Water:</u>	29
<u>Cleanups:</u>	96
<u>Groundwater</u>	
<u>Threats:</u>	98
<u>Hazardous Waste:</u>	84
<u>Impaired Water:</u>	99
<u>Solid Waste:</u>	99
Zoom to	***

Traffic Volume:  
78th Percentile

CalEnviroScreen 3.0





**TCI Transportation Commodities**



**Williams Tank Lines**



**American Building Supply Inc.**





## **DTE Energy (electric generation utility company)**

2526 W Washington St 95203

- The plant operates for 24 hrs. the whole seven days a week (Source: California Biomass Energy Alliance).
- There are multiple cylinder looking structures, with a white smoke coming out on one of those tubes.





- Based on CARB Pollution Mapping Tool, the total greenhouse gas (GHS) that DTE Energy produces is 428,743 metric tons CO<sub>2</sub>e (carbon dioxide equivalent). This company has the highest GHS ranked in Stockton.
- Adding to DTE Energy, there are trains that pass by right next to the company; the Freeway; and the Port of Stockton is also in close proximity.





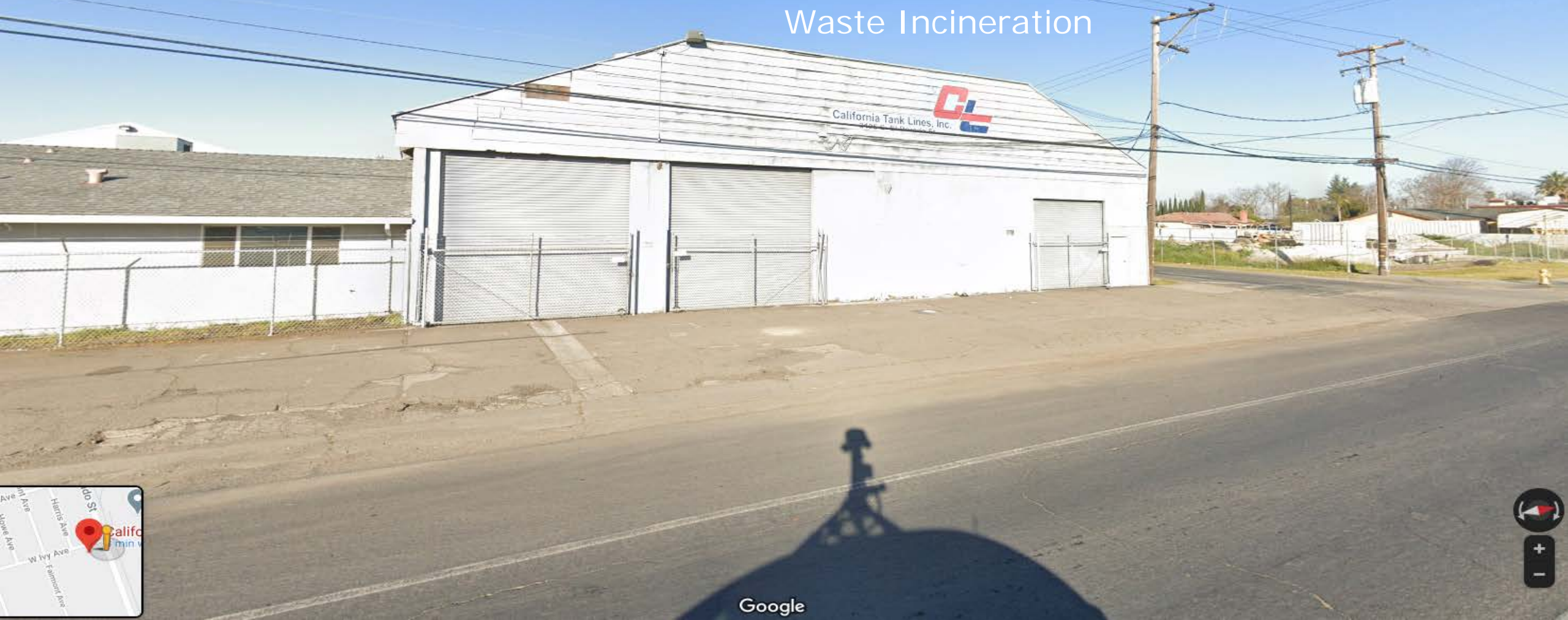
3105 El Dorado St  
Stockton, California



Street View

# South El Dorado California Tank Lines

Waste Incineration



Google





July 15th  
12:03 PM



In the Southside of  
Stockton, there are a  
handful of businesses  
that reside right next to  
homeowners, one of  
which is California Tank  
Lines.





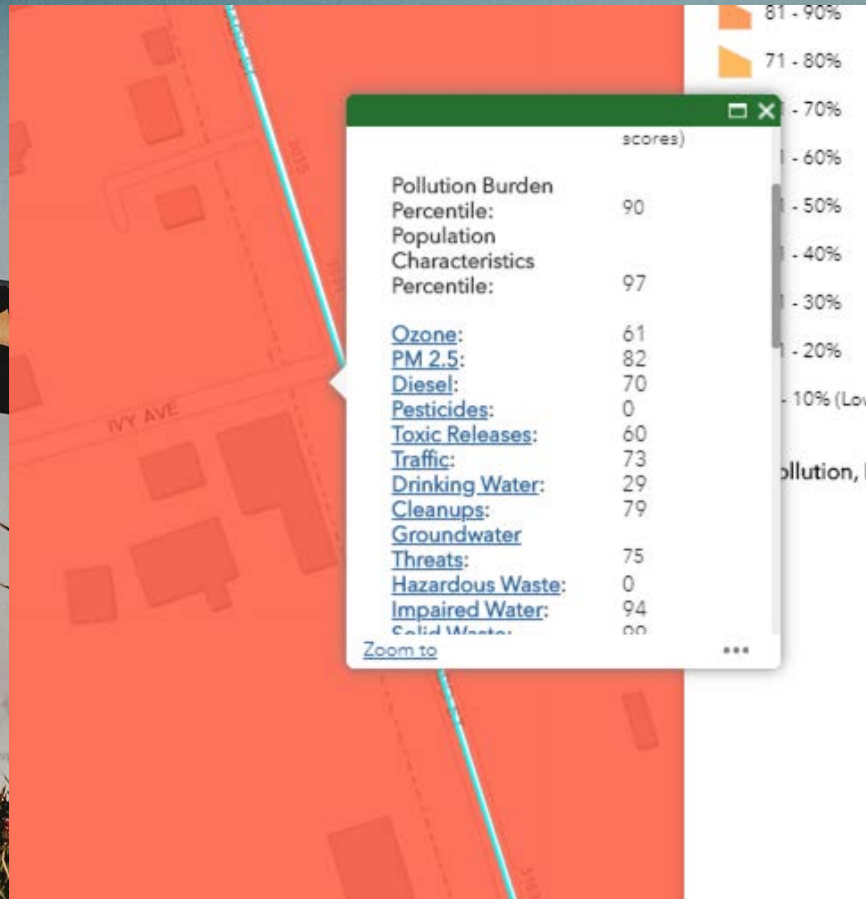
July 15th  
12:03 PM



Having investigated the  
area over the course of  
a few days,


This property is being  
seen with full  
smokestacks, while  
being well within  
walking distance of  
homes as close as  
walking across the  
street.






This along with other businesses such as auto dismantlers along El Dorado and the edge of the AB 617 Air Monitor perimeter, while despite staying within law and regulation of emissions, will no doubt negatively affect the homes that live near them.





We have to see justice  
for communities  
through monitoring  
the air of our most  
notorious violators.





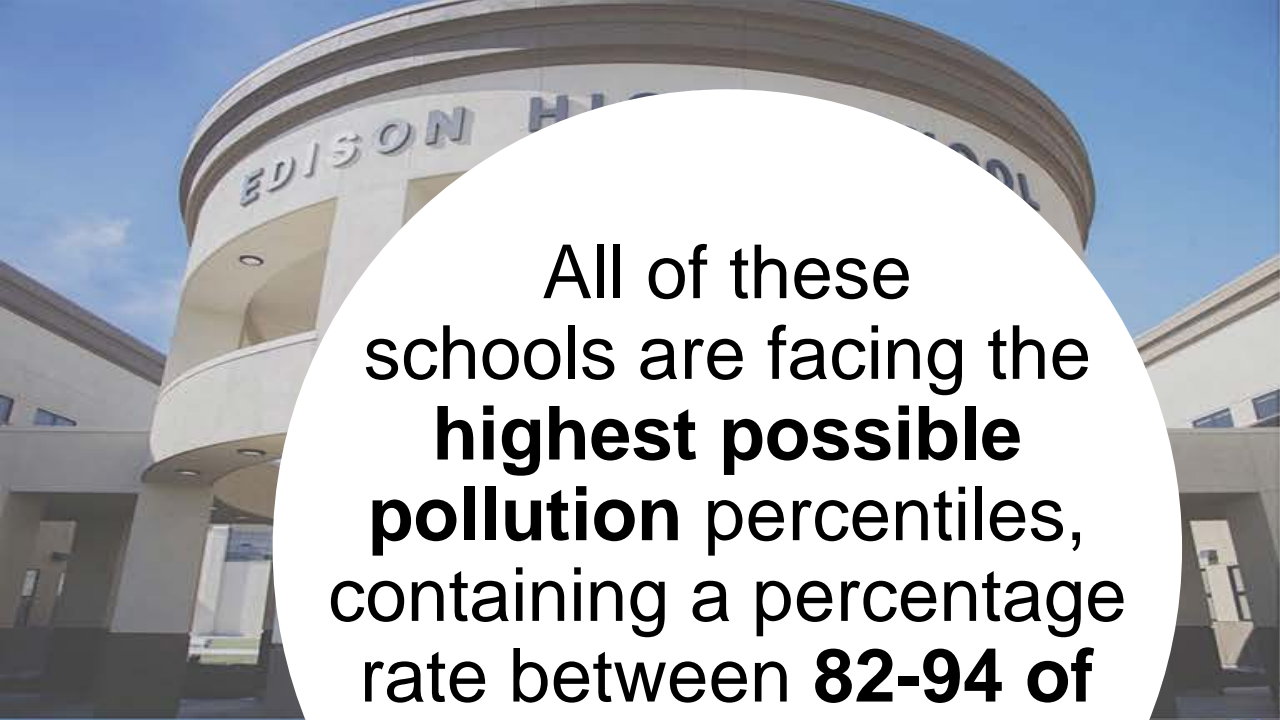
# Mobile Monitors

Cycling through  
SUSD Southside  
Schools


## **Some of the schools to consider monitoring:**

Washington Elementary, McKinley Elementary, Edison High School, San Joaquin Elementary, Dolores Huerta Elementary, and Hazelton Elementary.



A photograph of a large, modern school building with a curved facade. The words "EDISON HIGH SCHOOL" are visible on the upper part of the building.

All of these schools are facing the **highest possible pollution** percentiles, containing a percentage rate between **82-94 of PM 2.5 concentrations.**

A photograph of a school building with a sign that reads "KINLEY SCHOOL". There are trees and a utility pole in the background.

Surrounding the schools and nearby residential areas are trucking and manufacturing companies.

A photograph of a school sign for "Dolores Elementary School" with a "WELCOME" message. The sign is on a metal post. In the background, there is a road with a speed limit sign for 25 and some trees.

Dolores Elementary School  
WELCOME

A photograph of a school sign for "HAZELTON ELEMENTARY SCHOOL" mounted on a low wall. There is a grassy area and a fence in the background.

HAZELTON ELEMENTARY SCHOOL



McKinley Elementary is one prime example of the air disparities most of the SUSD Southside schools are having to endure.

- Located down the street is California Tank Lines, a lumbering production company and a truck company.
- These feed into the high pollution rates, including:
  - > Diesel PM percentile of 70
  - > Toxic Release percentile of 60
  - > PM 2.5 concentration





# Conclusion - The What

We NEED **permanent** air monitors in the following areas:

PORT OF STOCKTON - downwind of Port of Stockton  
TCI Transportation - Charter Way and Fresno Ave  
WASTE INCINERATION - South El Dorado

We NEED **mobile** air monitors in the following areas:

Around schools  
High areas of population density

# The Why

The Port of Stockton is a high polluter and a major contributor to the air pollution, disproportionately affecting downwind areas.

Permanent air monitoring would give clarity to the actions needed to take and provide data for the future *development* of clean air.

Air monitoring the port **is our most pressing issue**, we would be taking a major step forward and making the biggest impact we can sooner.

Air monitors need to be where they will pick up the MOST DATA.

Anything less is an injustice to the community and a purposeful inaccuracy.





# Conclusion - The What

We NEED **permanent** air monitors in the following areas:

PORT OF STOCKTON - downwind of Port of Stockton  
TCI Transportation - Charter Way and Fresno Ave  
WASTE INCINERATION - South El Dorado

We NEED **mobile** air monitors in the following areas:

Around schools  
High areas of population density

# The Why

Transforming industries to using clean technologies will *ultimately* make them more profitable in the long run while improving the surrounding community.

# Recommendations

Having good monitoring in the right place also means at the right time.

We want the **mobile** monitors to be **rotated on a schedule**, unknown to the public so as to collect as much untampered data as possible.

PORT OF STOCKTON - downwind of Port of Stockton  
TCI Transportation - Charter Way and Fresno Ave  
WASTE INCINERATION - South El Dorado

Around schools  
High areas of population density