

# Update on South Central Fresno Community Air Monitoring Plan

San Joaquin Valley Air Pollution Control District  
October 23, 2019

# Community Air Monitoring Underway

- Sites determined during Community Steering Committee meeting in June
- Two PM2.5 monitors operating for past several months
- District in various stages of discussion with property and school district officials for remaining sites
- Most air monitoring expected to be underway end of 2019





**Stand-Alone PM2.5**

**Compact Air Monitoring System**

**Trailer**

**Mobile Monitoring Van**

- Drive on a regular schedule throughout entire boundary all year
- Respond to community concerns
- Recommended focus route



# Site #1: Fresno-Roosevelt High School

- Real-time PM<sub>2.5</sub>
  - Began March 2019



## Site #2: Fresno-Bitwise

- Real-time PM<sub>2.5</sub>
  - Began August 2019



# Site #3: Orange Center School

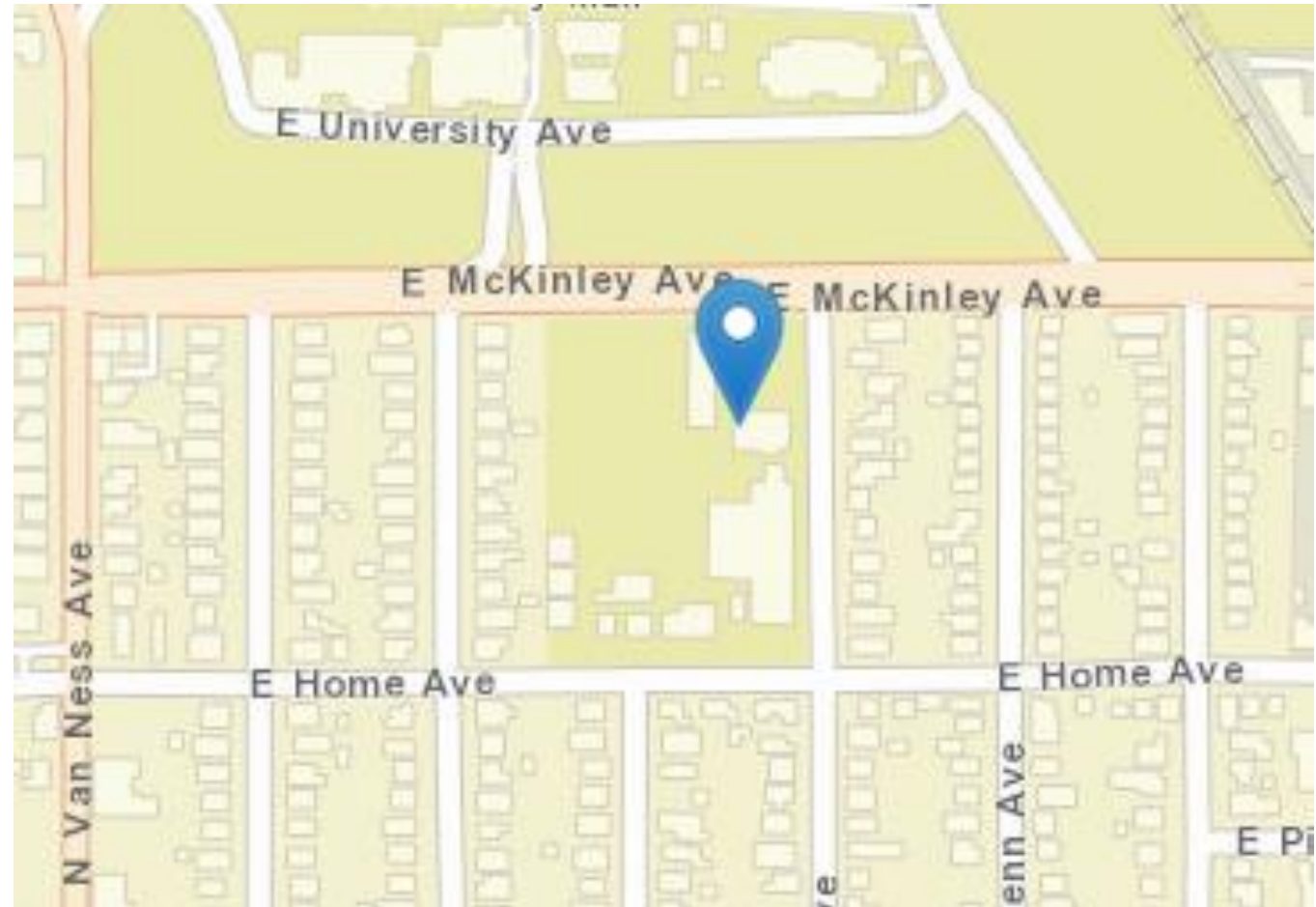
- Compact Monitoring System
  - PM2.5, BTEX, BC, Total VOCs, NOx, Ozone, SO2, and Meteorology
  - Trailer or platform mounted
  - Requires security, power, and access
- Monitoring will begin once site agreement in place
- District in discussions with Orange Center School





# Site #4: Heaton Elementary

- Real-time PM2.5
  - Roof or platform mounted
  - Requires security, power, and access
- Monitoring will begin once site agreement in place
- District in discussions with Fresno Unified





# Site #5: Edison High School

- Compact Monitoring System
  - PM2.5, BTEX, BC, Total VOCs, NOx, Ozone, SO2, and Meteorology
  - Trailer or platform mounted
  - Requires security, power, and access
- Monitoring will begin once site agreement in place
- District in discussions with Fresno Unified



# Site #6: Malaga Elementary

- Trailer
  - PM2.5, BTEX, BC, Total VOCs, NOx, Ozone, SO2, toxics, CO and Meteorology
  - Requires security, upgraded power, and access
- Monitoring will begin once site agreement in place
- District in discussions with Fowler Unified and Malaga Elementary





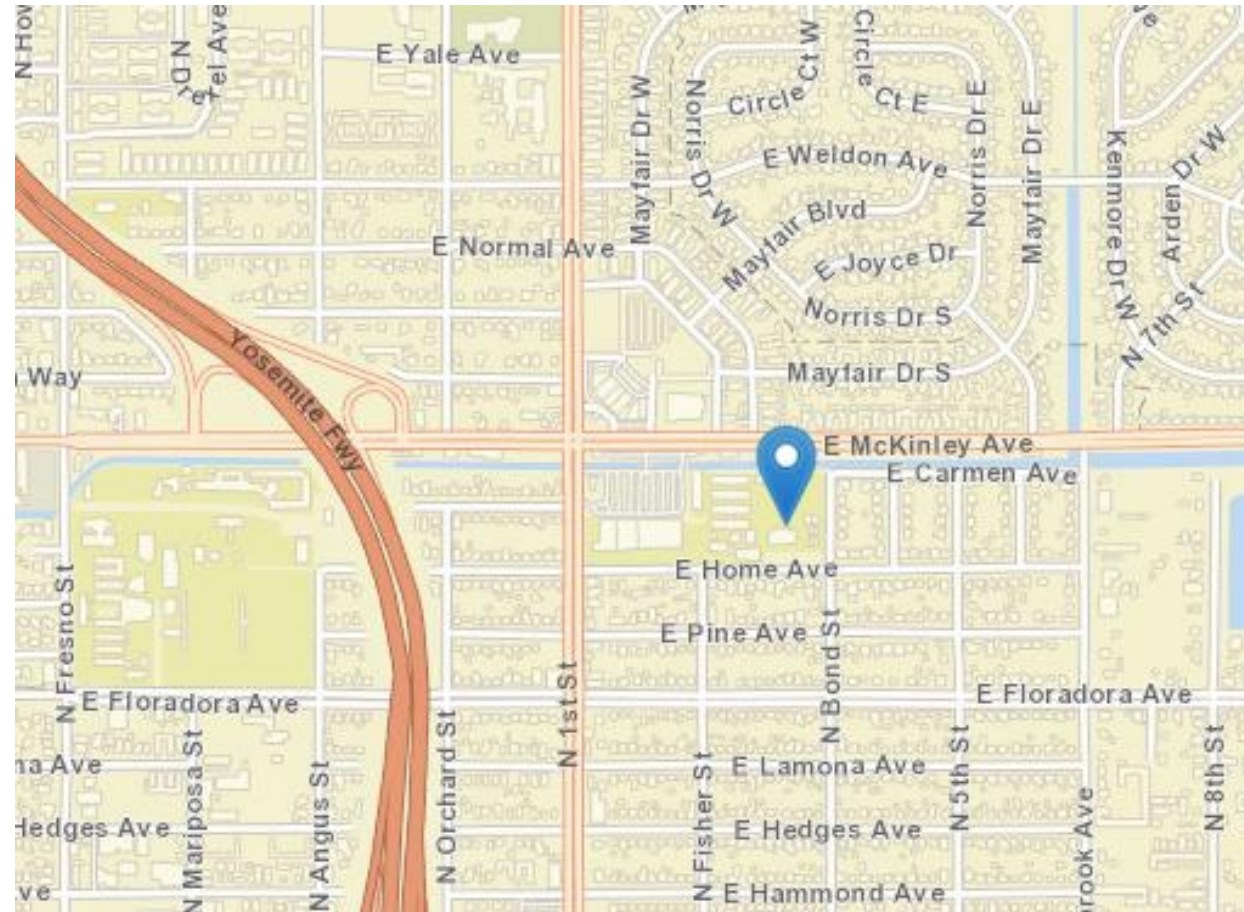
# Site #7: Madison Elementary

- Real-time PM2.5
  - Roof or platform mounted
  - Requires security, power, and access
- Monitoring will begin once site agreement in place
- District in discussions with Fresno Unified



# Site #8: Mayfair Elementary School

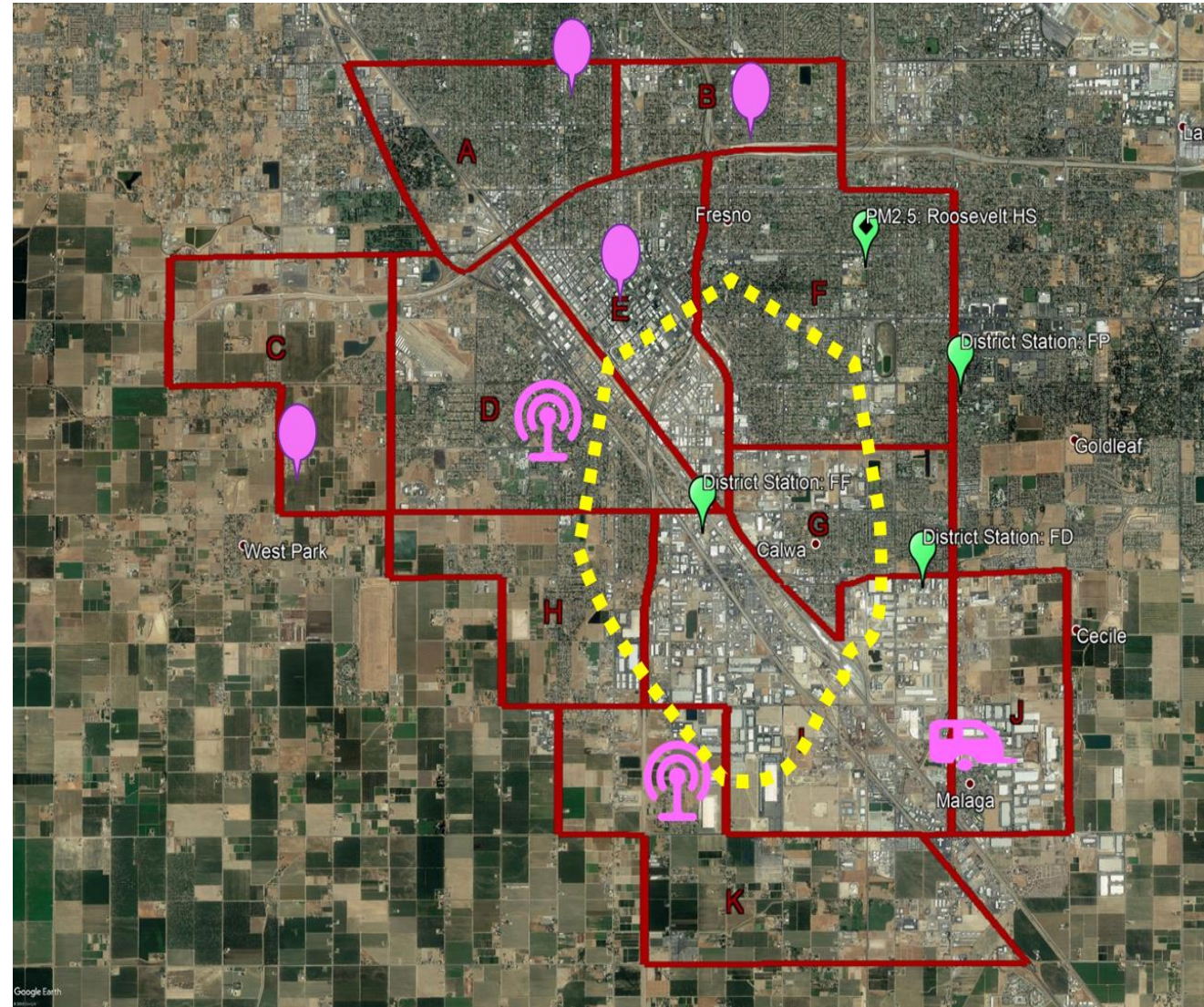
- Real-time PM2.5
  - Roof or platform mounted
  - Requires security, power, and access
- Monitoring will begin once site agreement in place
- District in discussions with Fresno Unified





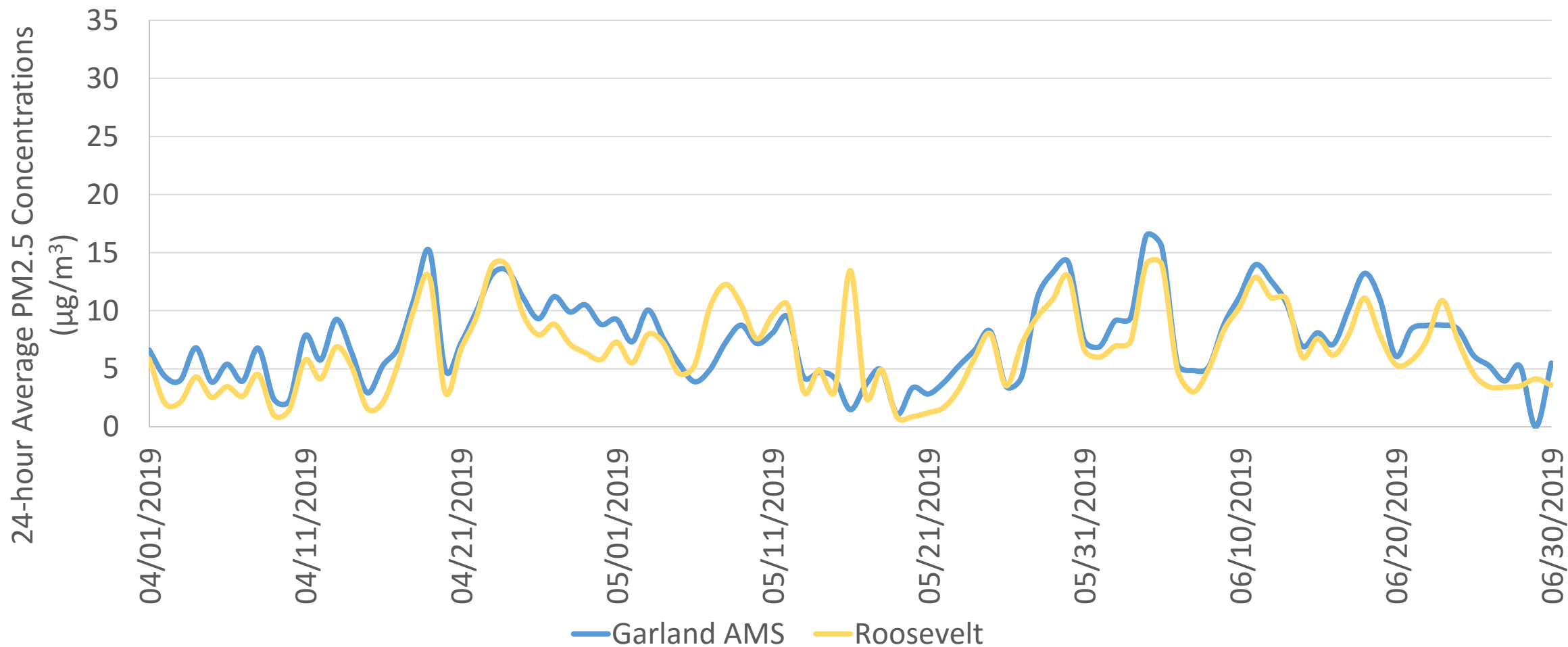
# Air Monitoring Van

- Mobile Van
  - PM2.5, BTEX, BC, Total VOCs, NOx, Ozone, SO2, toxics, CO and Meteorology
- Focus near sources of concern
  - Should site power and security allow, park for extended period for longer-term understanding of the sources of pollution
- Regularly throughout boundary
- To begin November 2019



# Daily Average PM2.5 Data Comparison

## April 1-June 30, 2019





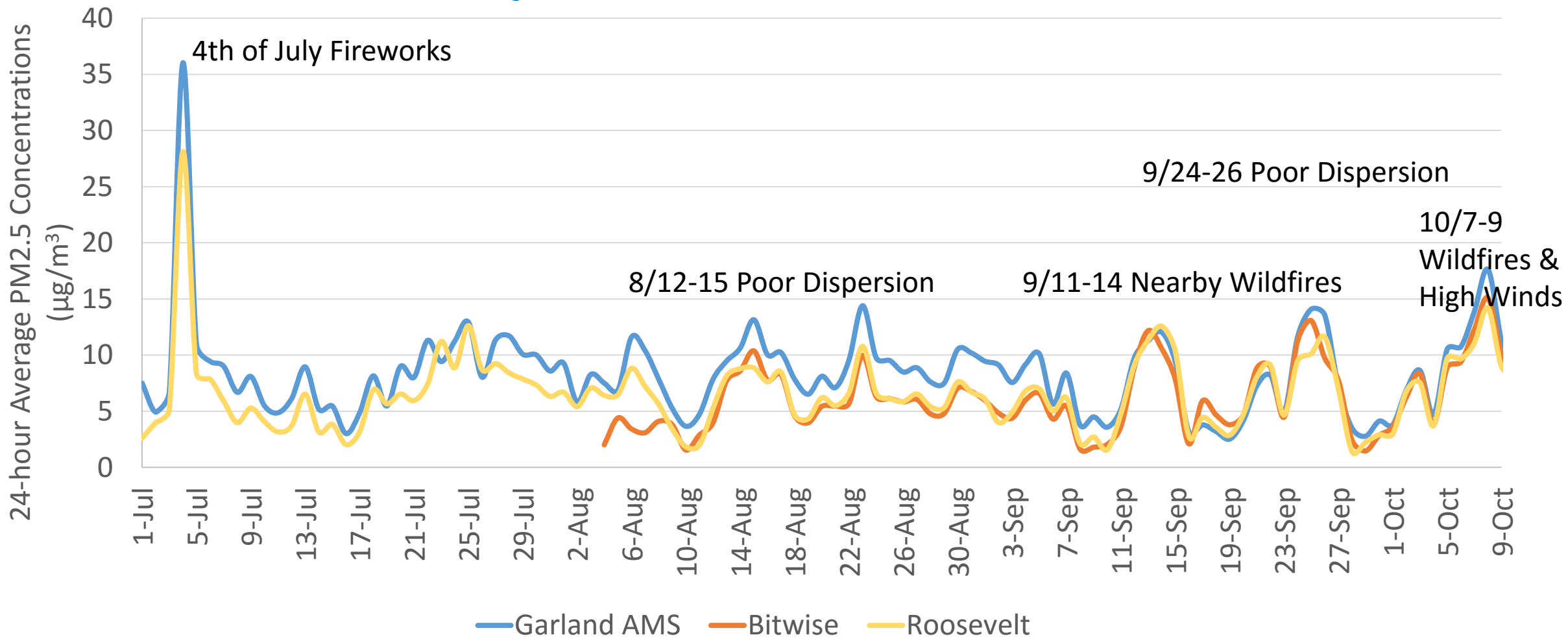
# Comparison of Average PM2.5

## April 1-June 30, 2019

Site	Average PM2.5 Concentration ( $\mu\text{g}/\text{m}^3$ )
Fresno-Garland	7.52
Fresno-Roosevelt	6.60

# Daily Average PM2.5 Data Comparison

## July 1 - October 10, 2019





# Comparison of Average PM2.5

## August 4- October 10, 2019

Site	Average PM2.5 Concentration ( $\mu\text{g}/\text{m}^3$ )
Fresno-Garland	8.15
Fresno-Roosevelt	6.14
Fresno-Bitwise	6.47

# Hourly Average PM2.5 Data Comparison

## September 13, 2019

