



AB 617 REPORT-BACK
Shafter
2019

Contents

List of Figures.....	0
List of Tables.....	1
1. INTRODUCTION	2
2. CARB'S 2019 SHAFTER ENFORCEMENT UPDATE.....	2
2.1 Inspection of Heavy-Duty Diesel Vehicles.....	3
2.2 Achieve Compliance with the Truck and Bus Regulation via Senate Bill 1	6
2.3 Consumer Products	7
2.4 Fuels.....	7
2.5 Complaints.....	8
2.6 Supplemental Environmental Projects.....	8
3. CARB'S ENFORCEMENT STRATEGIES UPDATE.....	9
3.1 Comparison of 2019 Enforcement Data to the Three-Year History.....	10
3.2 Achieve Compliance with the Truck and Bus Regulation via Senate Bill 1	10
3.3 Annual Report of Enforcement Activities	10
3.4 Cross-Agency Coordination.....	10
3.5 Outreach and Trainings	10
3.6 Streamlined Complaint Processes	12
3.7 No Idling Signs.....	12
3.8 Update Enforcement Strategies as Applicable.....	13
APPENDIX 1 – Program Descriptions.....	14
1. Heavy-Duty Diesel Vehicle Programs.....	14
2. Consumer Product Programs.....	15
APPENDIX 2 – Mobile Source Inspection Data – 2019.....	16
APPENDIX 3 – CalEPA Complaint Data – 2019.....	29

List of Figures

Figure 1. 2019 Compliance Rate for Mobile Sources in Shafter.	4
Figure 2. 2019 CARB Enforcement Locations in Shafter.....	5
Figure 3. CARB Complaint Reporting Business Cards.	11
Figure 4. No Idling Signs.....	13

List of Tables

Table 1. 2019 CARB Program Inspections in Shafter.	3
Table 2. Breakdown of Letters Sent Under SB1.	6
Table 3. Supplemental Environmental Projects in Shafter	8

1. INTRODUCTION

The California Air Resources Board (CARB) is dedicated to cleaning up California's air through both voluntary and mandatory programs. CARB has many rules (i.e., regulations) that we enforce throughout the state to reduce air pollution from mobile sources (which are defined as vehicles that have engines, like trucks, buses, construction equipment, and ships).

Effective enforcement of these rules is a key element of California's success in reducing air pollution and fighting climate change. Fair and consistent enforcement also provides a level-playing field for all regulated businesses, ensuring no one has an unfair advantage by not doing their part to help clean the air. CARB's Enforcement Division is responsible for enforcing these regulations through field inspections, facility inspections, and audits.

In 2018, CARB selected ten communities for the first year of the Assembly Bill (AB) 617 Program. This past year, seven of the ten community steering committees (CSCs) developed Community Emissions Reduction Programs (CERP), each of which includes a community-specific enforcement plan administered by air district and CARB staff. In the case of Shafter, the air district is the San Joaquin Valley Air Pollution Control District (SJVAPCD). This report provides an update to the community and air district on enforcement actions. The pages herein cover CARB's 2019 enforcement activities within this AB 617 community, including how we are addressing specific community concerns, and updates on how we have been and continue to implement the strategies outlined in Shafter's enforcement plan.

2. CARB'S 2019 SHAFTER ENFORCEMENT UPDATE

A strong and effective enforcement plan can ensure that existing and future regulatory efforts are successful at reducing emissions and improving air quality and public health within selected AB 617 communities. The enforcement plan within the Shafter CERP established strategies for enforcing existing air quality regulations, assessed existing non-compliance issues, identified approaches to enhance complaint reporting and compliance, and discussed potential enforcement mechanisms for new strategies. The enforcement plan also includes a three-year enforcement history (2015 – 2018) within the community as provided by CARB Enforcement. To review this and all other CERPs, visit https://ww2.arb.ca.gov/capp_2018_ad_cerps.

CARB is enhancing our enforcement efforts in each AB 617 community to address specific community concerns. While CARB has a strong presence in these communities, data from the past three years of enforcement efforts are now available

through the Enforcement Division's Visualization Tool¹, and demonstrate the Division's ongoing commitment to focus enforcement resources in these communities to close any identified gaps.

This report provides an overview of CARB's enforcement efforts in the Shafter community during 2019. The report summarizes the total number of inspections, violations, and compliance rates across multiple CARB programs, including heavy-duty diesel vehicle inspection programs, consumer products, and fuels. In addition to summarizing enforcement efforts, the report provides an update on CARB's enforcement strategies from Shafter's 2018 CERP.

2.1 Inspection of Heavy-Duty Diesel Vehicles

In 2019, CARB conducted 210 total program inspections on heavy-duty diesel vehicles (HDDV) within the AB 617 community of Shafter. **Table 1** provides a breakdown of enforcement activities through the HDDV programs in the community in 2019. A description of each HDDV program listed below can be found in **APPENDIX 1 – Program Descriptions**. It is important to note that inspections are program-based and some occur concurrently, meaning that CARB may conduct multiple program inspections on a single HDDV at the same time.

Table 1. 2019 CARB Program Inspections in Shafter.

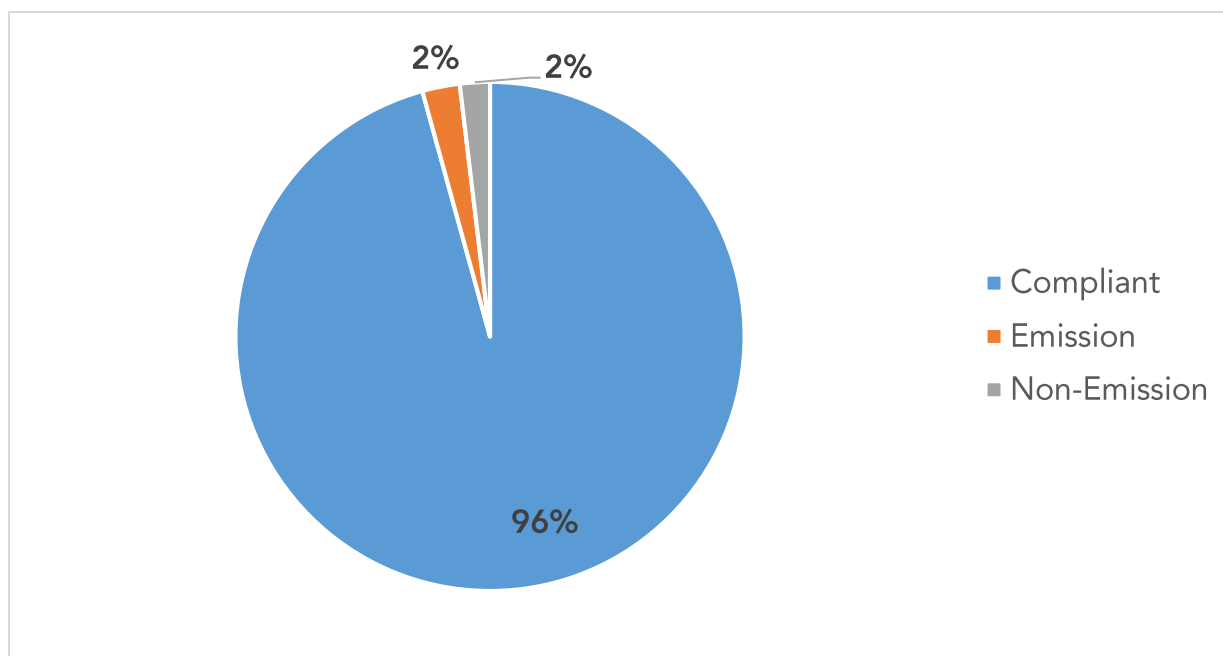
Program	Inspections	Compliant	Violations		Compliance Rate
			Emission	Non-Emission	
HDVIP	146	142	1	3	97%
Off-Road	1	1	0	0	100%
Smart Way	14	14	0	0	100%
Solid Waste Collection (SWC)	1	1	0	0	100%
Transportation Refrigeration Unit (TRU)	6	4	1	1	67%
Truck & Bus	42	39	3	0	93%
Total	210	201	5	4	96%

The Mobile Source Program covers statewide programs and strategies to reduce emissions of smog-forming pollutants and air contaminants from mobile sources, both on- and off-road vehicles and equipment. Of the 210 inspections, 201 were in

¹ CARB Enforcement Data Visualization Tool, available at <https://webmaps.arb.ca.gov/edvs/>.

compliance with CARB's rules and regulations. As shown in **Figure 1**, this indicates an overall compliance rate of 96 percent in 2019 within the Shafter community. CARB issued nine citations in the community, of which five were for emission-related violations (i.e. violations that directly contribute to air pollution) and four were for a non-emission-related violations (e.g., violations that could contribute indirectly to air pollution, such as a truck not complying with labeling requirements).

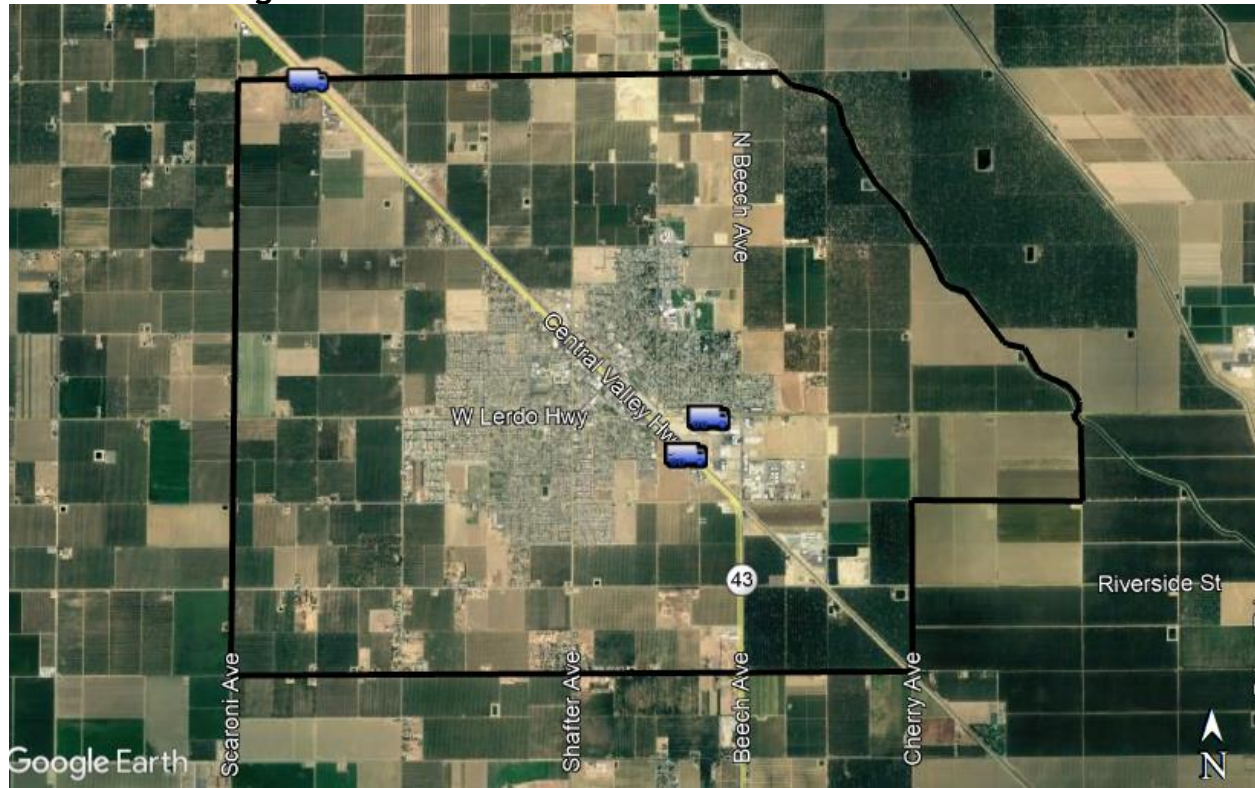
Figure 1. 2019 Compliance Rate for Mobile Sources in Shafter.



Through CARB's field enforcement activities in Shafter, Enforcement staff estimate the compliance rate for mobile sources in the community to be around 96 percent. Since the compliance rate is already high, increased enforcement of mobile sources in the area may not play a significant role in lowering the pollution burden in Shafter.

To expand CARB's inspection range, Enforcement staff continue to collaborate with the California Highway Patrol to pull over HDDVs for inspection. This method of inspection, called a roadside inspection, is limited by the safety requirement of at least two lanes (in one direction) on a roadway to safely pull over and inspect HDDVs. Audits, another method of inspection, require facilities to cooperate and allow CARB staff to perform onsite inspections on HDDVs at the facility. In 2019, CARB Enforcement focused on three locations in Shafter to inspect HDDVs, excluding idling. Indicated as truck icons in **Figure 2**, these locations include Highway 43 at Merced Avenue, Highway 43 at Ash Avenue, eastbound Lerdo Highway, and roaming inspections within the community.

Figure 2. 2019 CARB Enforcement Locations in Shafter.



In 2019, CARB staff also conducted roaming idling inspections in Shafter. During these inspections, CARB staff looked at one off-road vehicle. They found no violations of CARB's air pollution rules and regulations, and, as such, issued no citations. Moving into 2020, CARB staff will assist San Joaquin Valley Air Pollution Control District (SJVAPCD) with roaming idling inspections in South Central Fresno on at least a quarterly basis.

CARB Enforcement uses compliance audits as another important enforcement tool. Compliance audits start with Enforcement Division staff conducting a review of internal and external databases to determine which fleets and/or facilities potentially have the highest likelihood of operating out of compliance within a geographical area. This review may also be followed by field inspections. Once an audit is initiated, the company is issued a Notice of Audit, which requires the company owner to supply documentation to CARB to demonstrate compliance with CARB regulations. If the company owner is unable to provide proof of compliance, then the company owner receives a Notice of Violation, penalties are typically assessed, and the company is brought into compliance.

Moving forward into 2021, CARB's Enforcement Division plans to utilize compliance audits as an important tool to determine areas of high non-compliance within the community and address potential compliance issues. If a member of the CSC has

suggestions for enhancing compliance of CARB's current rules and regulations, please contact the Community Outreach and Enforcement Section (COES) at COES@arb.ca.gov.

2.2 Achieve Compliance with the Truck and Bus Regulation via Senate Bill 1

In April 2017, the Governor signed into law Senate Bill 1 (SB 1),² a legislative package meant to generate significant funding for transportation projects (e.g., to repair local streets, bridges, and roadways) across California. SB 1 includes a provision that aims to bring old, polluting buses and trucks into compliance with applicable emissions standards as outlined in the Statewide Truck and Bus Regulation, and authorizes DMV to deny registration to non-compliant heavy-duty vehicles³ starting January 1, 2020 through December 31, 2023. By the end of 2023, 100 percent of trucks and buses subject to the rule will be in compliance with this regulation.

In response to the regulation, CARB began a streamlined enforcement process to increase outreach to owners of heavy-duty diesel trucks and buses and provide an opportunity for vehicle owners to demonstrate compliance. Those with older vehicle models that could potentially be out of compliance were sent Notices of Non-Compliance (NC) and Notices of Violation (NOV)⁴ from 2018 through 2019. In the last quarter of 2019, CARB sent warning letters to fleet owners who appeared to have vehicles that could potentially be out of compliance beginning January 1, 2020. HDDV owners are now required to show proof of compliance to DMV with their vehicle registrations.

Table 2. Breakdown of Letters Sent Under SB1.

Type of Letter	Number of Letters Sent
Warning letters	64
NC and NOV letters	25
Total	89

CARB identified 503 HDDVs within Shafter. As shown in **Table 2**, CARB issued 64 warning letters and 25 NCs and NOVs to owners of vehicles within the area in 2019. Of the 25 vehicle owners sent NCs or NOVs, owners of six vehicles demonstrated compliance whereas 19 vehicles had registration holds issued by DMV and were removed from the road. In total, CARB issued warning letters or took enforcement

² https://leginfo.ca.gov/faces/billNavClient.xhtml?bill_id=201720180SB1

³ The regulation applies to nearly all diesel-fueled trucks, buses, and school buses with a gross vehicle weight rating (GVWR) greater than 14,000 pounds.

⁴ A Notice of Non-Compliance letter is sent to request proof of compliance. If compliance cannot be verified, a Notice of Violation is sent.

action against 89 vehicles owners. No enforcement action was taken regarding three other vehicles that were found not to be subject to the Truck and Bus Regulation.

2.3 Consumer Products

Consumer product inspections are an important regulatory tool to improve public health in the community. Consumer products, such as hairsprays, deodorants and flooring, are widely used, but can be sources of toxic air contaminants (TAC) and volatile organic compounds (VOC) that community members unknowingly bring into their homes.

As consumer products tend to be distributed and sold across the state in many different communities, pollutants from these products are considered area sources and are reviewed by CARB's Enforcement Division with a statewide lens rather than within a specific community. In 2019, the Consumer Product Enforcement Section conducted 673 investigations throughout the state and found 93 compliant products, 18 non-compliant products, and 562 products that are currently still under investigation. If you have any questions regarding CARB's Consumer Products Enforcement Section, please contact COES at COES@arb.ca.gov.

2.4 Fuels

California's reformulated gasoline requirements are designed to reduce emissions from the evaporation and burning of gasoline. The Low Carbon Fuel Standard⁵ (LCFS) requirements are designed to reduce greenhouse gas (GHG) emissions by reducing the carbon content of fuels. To enforce these programs, CARB staff conduct inspections and review reporting information. When CARB identifies a violation, staff pursue compliance through corrective action and through the issuance and settlement of NOVs.

CARB has not conducted any fuel inspections in the Shafter community to date. However, Shafter benefits from the fuel inspections and audits that take place in the surrounding area as fuel is widely distributed to service stations in the Central Valley. In 2019, 167 fuel inspections were conducted in California, of which four gasoline samples were found to be non-compliant. There were no violations for diesel, ethanol, or racing fuels. Overall, for the entire state, CARB determined a compliance rate of 98 percent in 2019.

⁵ <https://ww2.arb.ca.gov/our-work/programs/low-carbon-fuel-standard>

2.5 Complaints

Reporting potential violations of air quality requirements can provide important information for enforcement efforts. Enforcement staff investigate tips about non-compliance and complaints about smoking vehicles and other sources of air pollution.

In 2019, CARB Enforcement received one complaints through the California Environmental Protection Agency (CalEPA) reporting system within the Shafter community. CARB Enforcement referred these complaints to the appropriate agency within a timely manner.

Unfortunately, not all complaints are actionable. This can be due to a lack of necessary information, not providing a specific enough location, or not providing contact information for Enforcement staff to obtain additional information. In 2019, CARB received no actionable complaints for mobile sources registered in Shafter.

2.6 Supplemental Environmental Projects

CARB's Supplemental Environmental Projects⁶ (SEP) are community-based projects funded by a portion of penalties received during CARB's settlement of enforcement actions. The intention of CARB's SEP Program is to improve public health, reduce pollution, increase environmental compliance, and bring public awareness to neighborhoods most burdened by environmental harm. SEPs are presented to violators who may choose to fund a project to offset a portion (up to 50 percent) of their penalty for failing to follow CARB's rules and regulations.

Projects span across a variety of category types and include projects such as air filtration, air monitoring, tree planting, and community education programs. In Shafter and the surrounding AB 617 community area, one project has received funding for around a total of \$113,480 (see for details).

Table 3. Supplemental Environmental Projects in Shafter

SEP Program	Funding	Description
Asthma Impact Model Kern	\$113,480	This SEP aims to improve the lives of asthma sufferers by helping them identify asthma triggers and providing medical care to individuals who have little or no access to quality health care.

⁶ <https://ww2.arb.ca.gov/our-work/programs/supplemental-environmental-projects-seps>

Community-based organizations, air districts, and others wanting to support the health of their communities can apply to receive funding through the SEP Program. CARB staff work with applicants throughout the SEP proposal process to ensure applications are complete and thorough. CARB staff will continue to work with communities in Shafter to fund as many eligible community projects as possible through the SEP Program. CARB anticipates funding a diverse mix of air pollution and exposure reduction, outreach and education, air monitoring, greening, and additional project types that align with the SEP Program's policy and prioritize disadvantaged communities. For more information, email the SEP team at SEP@arb.ca.gov.

3. CARB'S ENFORCEMENT STRATEGIES UPDATE

After hearing concerns from community members through CSC meetings and CARB's complaint program, CARB staff developed each enforcement plan within CERPs in collaboration with the local air districts to address the specific needs of the communities. Concerns included items such as confusion about the complaint processes at both CARB and the air districts, and a lack of collaboration among agencies.

In the 2018 enforcement plan, CARB set the following enforcement goal:

CARB acknowledges that the high compliance rates identified in the enforcement history may not necessarily reflect compliance across the community. In cases where enhanced enforcement activities uncover non-compliance issues, CARB's goal will be to achieve the same or higher compliance rates as observed in the three-year history. CARB staff will also work closely with the community steering committee, the Air District, and other agencies (e.g. City of Shafter) to address gaps in the enforcement of mobile sources and seek opportunities to close these gaps.

CARB remains committed to our enforcement goal and strategies within the Shafter community. In the Shafter CERP, CARB committed to the following seven strategies in the enforcement plan (Chapter 5):

1. Increase the frequency of compliance inspections;
2. Achieve compliance with the Truck and Bus Regulation via Senate Bill 1;
3. Provide an annual report of enforcement activities;
4. Coordinate with other agencies;
5. Enhance CARB's Data Management Practices;
6. Provide in-person community specific training; and
7. Update enforcement strategies as applicable.

CARB approved the Community Emission Reduction Plan in February 2020. Prior to approval, CARB staff had already begun implementation of some of the strategies.

The following information is related to 2020 updates of CARB's strategies.

3.1 Comparison of 2019 Enforcement Data to the Three-Year History

In the 2018 Shafter enforcement plan, CARB Enforcement committed to increasing the frequency of compliance inspections. CARB has since increased the number of inspections in the community, particularly within the City of Shafter.

It is important to note that this does not include audits conducted by CARB staff. CARB Enforcement continues to see the enforcement plan within the CERP as an ever-evolving document and is open to changing or adjusting this strategy to better meet the community's needs. If a member of CSC wishes to make comments or provide suggestions to improve CARB's enforcement, please contact COES at COES@arb.ca.gov.

3.2 Achieve Compliance with the Truck and Bus Regulation via Senate Bill 1

See *Enforcement Update* section for progress reaching Compliance with the Truck and Bus Regulation via SB 1.

3.3 Annual Report of Enforcement Activities

CARB Enforcement is committed to providing CSC with a report of our progress towards implementing strategies in the enforcement plan, at minimum on an annual basis.

3.4 Cross-Agency Coordination

CARB Enforcement staff are committed to participating in all CSC meetings moving forward, and will seek opportunities to work with other agencies in meeting the goals of CERP and the enforcement plan. If a CSC member has any suggestions for how CARB Enforcement can coordinate with other agencies, please contact COES@arb.ca.gov or speak with the local CARB Enforcement liaison at an upcoming meeting.

3.5 Outreach and Trainings

In an effort to provide communities with more knowledge, tools, and resources for enhanced enforcement, CARB Enforcement has developed the following outreach materials to further inform community members:

- Complaint Reporting.
 - CARB has developed a community-focused training to provide communities with the information necessary to report a complaint. This training covers the basics of reporting a complaint, what CARB Enforcement refers to as the five Ws: Who, What, When, Where and Why. In April of 2020, CARB Enforcement staff began the process of developing this training into an online format to which air districts and community groups can link. The trainings are tailored to each region within the AB 617 Program. For instance, the training provided in the San Joaquin Valley may differ from training given in West Oakland, based on the types of emission sources within the region, as well as contact information for other regulatory parties.
 - As shown in **Figure 3**, CARB has also developed reporting cards (available in both English and Spanish) that include information on where to report complaints and the type of information that would be useful to provide when reporting complaints. If the community is interested in receiving CARB's complaint reporting training or obtaining the Complaint Reporting business cards through the CSC or another outlet, please contact COES@arb.ca.gov, or speak to your local CARB Enforcement liaison.

Figure 3. CARB Complaint Reporting Business Cards.

Reporting Air Pollution in Your Community

Vehicle Complaints
CARB: 1(800)END-SMOG
calepa.ca.gov/enforcement/complaints

Report concerns only when it is safe.
In an emergency, dial 911.

What are you reporting?
(Odor - Smoke - Burning - Idling)

Where did it occur?

When did it occur?
Is it ongoing?

Who or what is the cause?

Include photos, videos, and front and rear license plate numbers, if possible.

- **CARB's Enforcement Visualization Tool.** This web-based tool allows community members to see a map that details statewide field inspections and case settlements across California. This tool allows users to look up inspections by program, type, zip code, and date. A User Guide has been developed to go along with the tool. This is a one-pager on how to use the Visualization Tool in your community. The Visualization Tool is available at <https://webmaps.arb.ca.gov/edvs/>.
- **Supplemental Environmental Project (SEP) brochures.** The SEP brochure outlines the SEP program and how to apply. It is available in both English and Spanish. To learn more about the SEP program, visit

<https://ww2.arb.ca.gov/our-work/programs/supplemental-environmental-projects-seps>.

- **Informational Outreach Materials.** CARB staff are currently working on community outreach materials, including a multi-regulation booklet and a community idling factsheet. The booklet, geared towards community members, aims to provide information on the requirements for trucks and buses operating in their communities. For more information on any of the above outreach and training activities, please contact COES at COES@arb.ca.gov.

3.6 Streamlined Complaint Processes

CARB Enforcement complaints are currently separated by program and each program has its own complaint line, website, and email. Community members across the state have raised concerns around the complaint reporting process, therefore CARB has begun to create a one-stop-shop where all complaints will go through one system. This will make it easier for communities to make a complaint and follow it through the process. We are working to make this streamlined system easy to use, straightforward, with the ability to track complaints in multiple different ways, and as transparent to the public as possible.

As an interim step, CARB staff have begun to track all complaints we receive directly through the CalEPA complaint reporting system, as we work to streamline the other methods of complaint reporting. This system is also available online for the public to report a complaint: calepa.ca.gov/enforcement/complaints.

The development of our streamlined reporting system has just begun. Please contact COES at COES@arb.ca.gov if you have any suggestions to make the reporting system more robust. CARB staff also encourages community members to share your experience reporting complaints to help us develop a better complaint system.

3.7 No Idling Signs

CARB is committed to working with CSC, SJVAPCD, the City of Shafter, and other applicable organizations and agencies to provide “No Idling” signage to deter idling in areas of concern within the Shafter community.

Currently, CARB can provide two types of signs (**Figure 4** below) to the community at no cost:

1. A “No Idling sign” that can be used on public roads to help reduce the amount of idling trucks at a specific location.
2. A sign for use at schools to help inform and reduce idling of passenger vehicles.

Figure 4. No Idling Signs.



CARB does not have authority over the idling of passenger vehicles but staff understands that compounded emissions during school pick-up and drop-off have been a concern to community members in Shafter and in other AB 617 communities Statewide. CARB is prepared to provide a number of signs to the community, if requested, as well as to speak directly with school administration, teachers, staff, and the greater school community about CARB's "No Idling" signs and our rules.

3.8 Update Enforcement Strategies as Applicable

CARB Enforcement sees the enforcement plan within the Shafter CERP as an ever-evolving document. We are committed to updating enforcement strategies as requested by CSC, if the strategies are enforceable by CARB staff or if CARB can reasonably accommodate the request (e.g., additional enforcement training for idling vehicles). As CARB adopts new regulations included in the Plan, CARB will enforce these measures and integrate associated activities and data into the Shafter enforcement measures. If a CSC member would like to suggest updates to the enforcement strategies, please contact COES at COES@arb.ca.gov, or speak with the CARB Enforcement liaison at an upcoming meeting.

APPENDIX 1 – Program Descriptions

1. Heavy-Duty Diesel Vehicle Programs

More information on CARB's Heavy-Duty Diesel Vehicle Programs is available at arb.ca.gov/truckstop.

Heavy-Duty Vehicle Inspection Program (HDVIP): The HDVIP program requires inspection of heavy-duty trucks and buses for excessive smoke and tampering, and engine certification label compliance. Any heavy-duty vehicle traveling in California, including vehicles registered in other states and foreign countries may be tested. CARB inspection teams perform tests at border crossings, CHP weigh stations, fleet facilities, and randomly selected roadside locations. Owners of trucks and buses found in violation are subject to minimum penalties starting at \$300 per violation.

Off-Road Construction Equipment (Off-road regulation): Construction equipment is a major contributor to air pollution, especially when large construction projects are adjacent to neighborhoods. To address this source of air pollution, CARB adopted the nation's first regulation aimed at cleaning up off-road construction equipment such as bulldozers, graders, and backhoes. The off-road regulation requires off-road fleets to meet fleet average emission standards and be equipped with best available control technology (BACT) (a few specific exceptions apply).

Smart Way: The Tractor-Trailer Greenhouse Gas Regulation requires 53-foot or longer dry van or refrigerated van trailers and the tractors that pull them on California highways to use certain equipment that the U.S. EPA Smart Way program has verified or designated to meet their efficiency standards.

Solid Waste Collection Vehicles (SWCVs): The Solid Waste Collection Vehicle regulation required vehicle owners to upgrade solid waste collection vehicles by December 31, 2010. On January 24, 2019, the Board approved amendments that now require reporting for SWCVs with 2006 model year and older engines to avoid unnecessary registration delays at the California Department of Motor Vehicles (DMV) starting in 2020 due to Senate Bill 1 requirements. The approved amendments added heavy diesel-fueled on-road single engine cranes to the regulation and became effective on July 1, 2019. These specialized cranes are required to phase-in 2010 or newer model year engines from 2019 to 2027.

Transport Refrigeration Unit (TRU): TRUs are refrigeration systems powered by diesel internal combustion engines designed to refrigerate or heat perishable products that are transported in various containers, including semi-trailers, truck vans, shipping containers, and rail cars. Because diesel particulate matter is an identified toxic air contaminant, CARB adopted an airborne toxic control measure (ATCM) for TRUs and

TRU generator sets. CARB staff inspect TRUs to ensure that the units are meeting labeling and in-use performance standards identified in the TRU regulation.

Drayage: The Drayage Truck Regulation is part of CARB's ongoing efforts to reduce particulate matter (PM) and oxides of nitrogen (NOx) emissions from diesel-fueled engines and improve air quality associated with goods movement. Heavy-duty vehicles that carry goods to or from a port or intermodal facility are required to be equipped with a 2007 or newer model year engine. This requirement becomes stricter in 2023, when drayage trucks are required to be equipped with a 2010 or newer model year engine, because drayage trucks will be required to meet the standards of the Statewide Truck and Bus regulation.

Statewide Truck and Bus (STB): The Statewide Truck and Bus regulation requires diesel trucks with a gross vehicle weight rating (GVWR) greater than 14,000 pounds that operate in California to install diesel particulate filters, or replace older engines with cleaner engine technology, on a schedule based on the model year of the engine and GVWR. By the end of 2023, 100 percent of trucks and buses subject to the rule will be in compliance with this regulation.

Idling: Idling and opacity inspections are performed to ensure an HDDV is compliant with emission standards and is not violating CARB's Idling regulation. Idling for more than five minutes is prohibited unless the HDDV is certified clean idle and the vehicle is more than 100 feet away from a school or restricted area (exceptions apply). Vehicle owners and drivers in violation are subject to minimum penalties starting at \$300 per violation and up to \$1000 per day.

2. Consumer Product Programs

Composite Wood Products: CARB's ATCM to control formaldehyde emissions from composite wood specifically focuses on three products: hardwood plywood, particleboard, and medium density fiberboard. Investigators in the Composite Wood Products program purchase samples of regulated products from outlets all over California. They inspect products and packaging for compliance with labeling requirements and send selected products to the laboratory for testing.

Consumer Products: Consumer products are chemically formulated products used by household and institutional consumers. Some examples are: detergents, cleaning compounds; polishes, floor finishes; cosmetics and personal care products; home, lawn, and garden products; disinfectants and sanitizers; aerosol paints and automotive specialty products. Consumer products do not include other paint products, furniture coatings, or architectural coatings. Investigators in the Consumer Products program purchase samples of regulated consumer products from outlets all over California. They inspect product containers for compliance with registration and dating requirements and send selected products to the laboratory for testing.

APPENDIX 2 – Mobile Source Inspection Data – 2019

Year	Inspection Date	Program	Inspection	Citation issued (Y/N)	Violation Type (Emission or Non-Emission)	Street	City	DPF	Engine Year
2019	4/9/2019	HDVIP	Quick Snap			SB HWY 43 @ ASH	SHAFTER	Yes	2004
2019	4/9/2019	HDVIP	ECL			SB HWY 43 @ ASH	SHAFTER	Yes	2004
2019	4/9/2019	HDVIP	Tampering			SB HWY 43 @ ASH	SHAFTER	Yes	2004
2019	4/9/2019	HDVIP	Quick Snap			SB HWY 43 @ ASH	SHAFTER	Yes	2002
2019	4/9/2019	HDVIP	ECL			SB HWY 43 @ ASH	SHAFTER	Yes	2002
2019	4/9/2019	HDVIP	Tampering			SB HWY 43 @ ASH	SHAFTER	Yes	2002
2019	4/9/2019	HDVIP	Quick Snap			SB HWY 43 @ ASH	SHAFTER	Yes	2007
2019	4/9/2019	HDVIP	ECL			SB HWY 43 @ ASH	SHAFTER	Yes	2007
2019	4/9/2019	HDVIP	Tampering			SB HWY 43 @ ASH	SHAFTER	Yes	2007
2019	4/9/2019	HDVIP	Quick Snap			SB HWY 43 @ ASH	SHAFTER	Yes	2018
2019	4/9/2019	HDVIP	ECL			SB HWY 43 @ ASH	SHAFTER	Yes	2018
2019	4/9/2019	HDVIP	DEF			SB HWY 43 @ ASH	SHAFTER	Yes	2018
2019	4/9/2019	HDVIP	Tampering			SB HWY 43 @ ASH	SHAFTER	Yes	2018
2019	4/9/2019	HDVIP	Quick Snap			SB HWY 43 @ ASH	SHAFTER	Yes	2004
2019	4/9/2019	HDVIP	ECL			SB HWY 43 @ ASH	SHAFTER	Yes	2004
2019	4/9/2019	HDVIP	Tampering			SB HWY 43 @ ASH	SHAFTER	Yes	2004
2019	4/9/2019	HDVIP	Quick Snap			SB HWY 43 @ ASH	SHAFTER	Yes	2007
2019	4/9/2019	HDVIP	ECL			SB HWY 43 @ ASH	SHAFTER	Yes	2007
2019	4/9/2019	HDVIP	Tampering			SB HWY 43 @ ASH	SHAFTER	Yes	2007
2019	4/9/2019	Smart Way				SB HWY 43 @ ASH	SHAFTER	No	
2019	4/9/2019	Smart Way				SB HWY 43 @ ASH	SHAFTER	Yes	2004
2019	4/9/2019	Smart Way				SB HWY 43 @ ASH	SHAFTER	Yes	2007
2019	4/9/2019	Smart Way				SB HWY 43 @ ASH	SHAFTER	Yes	2002
2019	4/9/2019	Smart Way				SB HWY 43 @ ASH	SHAFTER	Yes	2004
2019	4/9/2019	Smart Way				SB HWY 43 @ ASH	SHAFTER	Yes	2007

Year	Inspection Date	Program	Inspection	Citation issued (Y/N)	Violation Type (Emission or Non-Emission)	Street	City	DPF	Engine Year
2019	4/9/2019	Smart Way				SB HWY 43 @ ASH	SHAFTER	Yes	2018
2019	4/9/2019	SWC				SB HWY 43 @ ASH	SHAFTER	Yes	2002
2019	4/9/2019	TRU		Y	Non-Emission	SB HWY 43 @ ASH	SHAFTER	No	
2019	4/9/2019	Truck & Bus				SB HWY 43 @ ASH	SHAFTER	Yes	2004
2019	4/9/2019	Truck & Bus				SB HWY 43 @ ASH	SHAFTER	Yes	2007
2019	4/9/2019	Truck & Bus				SB HWY 43 @ ASH	SHAFTER	Yes	2004
2019	4/10/2019	HVIP	Quick Snap			SB HWY 43 @ ASH	SHAFTER	Yes	1999
2019	4/10/2019	HVIP	ECL			SB HWY 43 @ ASH	SHAFTER	Yes	1999
2019	4/10/2019	HVIP	Tampering			SB HWY 43 @ ASH	SHAFTER	Yes	1999
2019	4/10/2019	HVIP	Quick Snap			SB HWY 43 @ ASH	SHAFTER	No	1993
2019	4/10/2019	HVIP	ECL			SB HWY 43 @ ASH	SHAFTER	No	1993
2019	4/10/2019	HVIP	Tampering			SB HWY 43 @ ASH	SHAFTER	No	1993
2019	4/10/2019	HVIP	Quick Snap			SB HWY 43 @ ASH	SHAFTER	No	2009
2019	4/10/2019	HVIP	ECL			SB HWY 43 @ ASH	SHAFTER	No	2009
2019	4/10/2019	HVIP	Tampering			SB HWY 43 @ ASH	SHAFTER	No	2009
2019	4/10/2019	HVIP	Quick Snap			SB HWY 43 @ ASH	SHAFTER	Yes	1997
2019	4/10/2019	HVIP	ECL			SB HWY 43 @ ASH	SHAFTER	Yes	1997
2019	4/10/2019	HVIP	Tampering			SB HWY 43 @ ASH	SHAFTER	Yes	1997
2019	4/10/2019	HVIP	Quick Snap			SB HWY 43 @ ASH	SHAFTER	Yes	2018
2019	4/10/2019	HVIP	ECL			SB HWY 43 @ ASH	SHAFTER	Yes	2018
2019	4/10/2019	HVIP	DEF			SB HWY 43 @ ASH	SHAFTER	Yes	2018
2019	4/10/2019	HVIP	Tampering			SB HWY 43 @ ASH	SHAFTER	Yes	2018
2019	4/10/2019	Smart Way				SB HWY 43 @ ASH	SHAFTER	Yes	1999
2019	4/10/2019	Smart Way				SB HWY 43 @ ASH	SHAFTER	No	2009
2019	4/10/2019	Smart Way				SB HWY 43 @ ASH	SHAFTER	Yes	1997
2019	4/10/2019	Smart Way				SB HWY 43 @ ASH	SHAFTER	Yes	2018
2019	4/10/2019	TRU				SB HWY 43 @ ASH	SHAFTER	Yes	2018

Year	Inspection Date	Program	Inspection	Citation issued (Y/N)	Violation Type (Emission or Non-Emission)	Street	City	DPF	Engine Year
2019	4/10/2019	Truck & Bus				SB HWY 43 @ ASH	SHAFTER	Yes	1999
2019	4/10/2019	Truck & Bus		Y	Emission	SB HWY 43 @ ASH	SHAFTER	No	1993
2019	4/10/2019	Truck & Bus				SB HWY 43 @ ASH	SHAFTER	No	2009
2019	4/10/2019	Truck & Bus				SB HWY 43 @ ASH	SHAFTER	Yes	1997
2019	4/9/2019	HDVIP	Quick Snap			ROADSIDE INSPECTION SITE @ E/B LERDO HWY	SHAFTER	No	
2019	4/9/2019	HDVIP	ECL			ROADSIDE INSPECTION SITE @ E/B LERDO HWY	SHAFTER	No	
2019	4/9/2019	HDVIP	Tampering			ROADSIDE INSPECTION SITE @ E/B LERDO HWY	SHAFTER	No	
2019	4/9/2019	HDVIP	Quick Snap			ROADSIDE INSPECTION SITE @ E/B LERDO HWY	SHAFTER	Yes	2014
2019	4/9/2019	HDVIP	ECL			ROADSIDE INSPECTION SITE @ E/B LERDO HWY	SHAFTER	Yes	2014
2019	4/9/2019	HDVIP	Tampering			ROADSIDE INSPECTION SITE @ E/B LERDO HWY	SHAFTER	Yes	2014
2019	4/9/2019	HDVIP	Quick Snap			ROADSIDE INSPECTION SITE @ E/B LERDO HWY	SHAFTER	Yes	2012
2019	4/9/2019	HDVIP	ECL			ROADSIDE INSPECTION SITE @ E/B LERDO HWY	SHAFTER	Yes	2012
2019	4/9/2019	HDVIP	Tampering			ROADSIDE INSPECTION SITE @ E/B LERDO HWY	SHAFTER	Yes	2012
2019	4/9/2019	HDVIP	Quick Snap			ROADSIDE INSPECTION SITE @ E/B LERDO HWY	SHAFTER	Yes	2016
2019	4/9/2019	HDVIP	ECL			ROADSIDE INSPECTION SITE @ E/B LERDO HWY	SHAFTER	Yes	2016
2019	4/9/2019	HDVIP	Tampering			ROADSIDE INSPECTION	SHAFTER	Yes	2016

Year	Inspection Date	Program	Inspection	Citation issued (Y/N)	Violation Type (Emission or Non-Emission)	Street	City	DPF	Engine Year
						SITE @ E/B LERDO HWY			
2019	4/9/2019	HDVIP	Quick Snap			ROADSIDE INSPECTION SITE @ E/B LERDO HWY	SHAFTER	Yes	2016
2019	4/9/2019	HDVIP	ECL			ROADSIDE INSPECTION SITE @ E/B LERDO HWY	SHAFTER	Yes	2016
2019	4/9/2019	HDVIP	Tampering			ROADSIDE INSPECTION SITE @ E/B LERDO HWY	SHAFTER	Yes	2016
2019	4/9/2019	HDVIP	Quick Snap			ROADSIDE INSPECTION SITE @ E/B LERDO HWY	SHAFTER	No	
2019	4/9/2019	HDVIP	ECL			ROADSIDE INSPECTION SITE @ E/B LERDO HWY	SHAFTER	No	
2019	4/9/2019	HDVIP	Tampering			ROADSIDE INSPECTION SITE @ E/B LERDO HWY	SHAFTER	No	
2019	4/9/2019	HDVIP	Quick Snap			ROADSIDE INSPECTION SITE @ E/B LERDO HWY	SHAFTER	Yes	2013
2019	4/9/2019	HDVIP	ECL			ROADSIDE INSPECTION SITE @ E/B LERDO HWY	SHAFTER	Yes	2013
2019	4/9/2019	HDVIP	Tampering			ROADSIDE INSPECTION SITE @ E/B LERDO HWY	SHAFTER	Yes	2013
2019	4/9/2019	HDVIP	Quick Snap			ROADSIDE INSPECTION SITE @ E/B LERDO HWY	SHAFTER	Yes	2016
2019	4/9/2019	HDVIP	ECL			ROADSIDE INSPECTION SITE @ E/B LERDO HWY	SHAFTER	Yes	2016
2019	4/9/2019	HDVIP	Tampering			ROADSIDE INSPECTION SITE @ E/B LERDO HWY	SHAFTER	Yes	2016
2019	4/9/2019	HDVIP	Quick Snap			ROADSIDE INSPECTION SITE @ E/B LERDO HWY	SHAFTER	Yes	2013

Year	Inspection Date	Program	Inspection	Citation issued (Y/N)	Violation Type (Emission or Non-Emission)	Street	City	DPF	Engine Year
2019	4/9/2019	HDVIP	ECL			ROADSIDE INSPECTION SITE @ E/B LERDO HWY	SHAFTER	Yes	2013
2019	4/9/2019	HDVIP	Tampering			ROADSIDE INSPECTION SITE @ E/B LERDO HWY	SHAFTER	Yes	2013
2019	4/9/2019	HDVIP	Quick Snap			ROADSIDE INSPECTION SITE @ E/B LERDO HWY	SHAFTER	Yes	2011
2019	4/9/2019	HDVIP	ECL			ROADSIDE INSPECTION SITE @ E/B LERDO HWY	SHAFTER	Yes	2011
2019	4/9/2019	HDVIP	Tampering			ROADSIDE INSPECTION SITE @ E/B LERDO HWY	SHAFTER	Yes	2011
2019	4/9/2019	HDVIP	Quick Snap			ROADSIDE INSPECTION SITE @ E/B LERDO HWY	SHAFTER	No	
2019	4/9/2019	HDVIP	ECL	Y	Emission	ROADSIDE INSPECTION SITE @ E/B LERDO HWY	SHAFTER	No	
2019	4/9/2019	HDVIP	Tampering			ROADSIDE INSPECTION SITE @ E/B LERDO HWY	SHAFTER	No	
2019	4/9/2019	HDVIP	Quick Snap			ROADSIDE INSPECTION SITE @ E/B LERDO HWY	SHAFTER	Yes	2014
2019	4/9/2019	HDVIP	ECL			ROADSIDE INSPECTION SITE @ E/B LERDO HWY	SHAFTER	Yes	2014
2019	4/9/2019	HDVIP	Tampering			ROADSIDE INSPECTION SITE @ E/B LERDO HWY	SHAFTER	Yes	2014
2019	4/9/2019	HDVIP	Quick Snap			ROADSIDE INSPECTION SITE @ E/B LERDO HWY	SHAFTER	Yes	2013
2019	4/9/2019	HDVIP	ECL			ROADSIDE INSPECTION SITE @ E/B LERDO HWY	SHAFTER	Yes	2013
2019	4/9/2019	HDVIP	Tampering			ROADSIDE INSPECTION	SHAFTER	Yes	2013

Year	Inspection Date	Program	Inspection	Citation issued (Y/N)	Violation Type (Emission or Non-Emission)	Street	City	DPF	Engine Year
						SITE @ E/B LERDO HWY			
2019	4/9/2019	HDVIP	Quick Snap			ROADSIDE INSPECTION SITE @ E/B LERDO HWY	SHAFTER	Yes	2015
2019	4/9/2019	HDVIP	ECL			ROADSIDE INSPECTION SITE @ E/B LERDO HWY	SHAFTER	Yes	2015
2019	4/9/2019	HDVIP	Tampering			ROADSIDE INSPECTION SITE @ E/B LERDO HWY	SHAFTER	Yes	2015
2019	4/9/2019	HDVIP	Quick Snap			ROADSIDE INSPECTION SITE @ E/B LERDO HWY	SHAFTER	Yes	2011
2019	4/9/2019	HDVIP	ECL			ROADSIDE INSPECTION SITE @ E/B LERDO HWY	SHAFTER	Yes	2011
2019	4/9/2019	HDVIP	Tampering			ROADSIDE INSPECTION SITE @ E/B LERDO HWY	SHAFTER	Yes	2011
2019	4/9/2019	HDVIP	Quick Snap			ROADSIDE INSPECTION SITE @ E/B LERDO HWY	SHAFTER	Yes	2016
2019	4/9/2019	HDVIP	ECL			ROADSIDE INSPECTION SITE @ E/B LERDO HWY	SHAFTER	Yes	2016
2019	4/9/2019	HDVIP	Tampering			ROADSIDE INSPECTION SITE @ E/B LERDO HWY	SHAFTER	Yes	2016
2019	4/9/2019	HDVIP	Quick Snap			ROADSIDE INSPECTION SITE @ E/B LERDO HWY	SHAFTER	Yes	2016
2019	4/9/2019	HDVIP	ECL			ROADSIDE INSPECTION SITE @ E/B LERDO HWY	SHAFTER	Yes	2016
2019	4/9/2019	HDVIP	Tampering			ROADSIDE INSPECTION SITE @ E/B LERDO HWY	SHAFTER	Yes	2016
2019	4/9/2019	Smart Way				ROADSIDE INSPECTION SITE @ E/B LERDO HWY	SHAFTER	No	

Year	Inspection Date	Program	Inspection	Citation issued (Y/N)	Violation Type (Emission or Non-Emission)	Street	City	DPF	Engine Year
2019	4/9/2019	Smart Way				ROADSIDE INSPECTION SITE @ E/B LERDO HWY	SHAFTER	No	
2019	4/9/2019	TRU		Y	Emission	ROADSIDE INSPECTION SITE @ E/B LERDO HWY	SHAFTER	No	1997
2019	4/9/2019	TRU				ROADSIDE INSPECTION SITE @ E/B LERDO HWY	SHAFTER	Yes	2014
2019	4/9/2019	Truck & Bus				ROADSIDE INSPECTION SITE @ E/B LERDO HWY	SHAFTER	Yes	2014
2019	4/9/2019	Truck & Bus		Y	Emission	ROADSIDE INSPECTION SITE @ E/B LERDO HWY	SHAFTER	No	
2019	4/9/2019	Truck & Bus				ROADSIDE INSPECTION SITE @ E/B LERDO HWY	SHAFTER	Yes	2012
2019	4/9/2019	Truck & Bus				ROADSIDE INSPECTION SITE @ E/B LERDO HWY	SHAFTER	Yes	2016
2019	4/9/2019	Truck & Bus				ROADSIDE INSPECTION SITE @ E/B LERDO HWY	SHAFTER	Yes	2016
2019	4/9/2019	Truck & Bus				ROADSIDE INSPECTION SITE @ E/B LERDO HWY	SHAFTER	Yes	2013
2019	4/9/2019	Truck & Bus		Y	Emission	ROADSIDE INSPECTION SITE @ E/B LERDO HWY	SHAFTER	No	
2019	4/9/2019	Truck & Bus				ROADSIDE INSPECTION SITE @ E/B LERDO HWY	SHAFTER	Yes	2011
2019	4/9/2019	Truck & Bus				ROADSIDE INSPECTION SITE @ E/B LERDO HWY	SHAFTER	Yes	2013
2019	4/9/2019	Truck & Bus				ROADSIDE INSPECTION SITE @ E/B LERDO HWY	SHAFTER	Yes	2016
2019	4/9/2019	Truck & Bus				ROADSIDE INSPECTION	SHAFTER	Yes	2015

Year	Inspection Date	Program	Inspection	Citation issued (Y/N)	Violation Type (Emission or Non-Emission)	Street	City	DPF	Engine Year
						SITE @ E/B LERDO HWY			
2019	4/9/2019	Truck & Bus				ROADSIDE INSPECTION SITE @ E/B LERDO HWY	SHAFTER	Yes	2016
2019	4/9/2019	Truck & Bus				ROADSIDE INSPECTION SITE @ E/B LERDO HWY	SHAFTER	Yes	2016
2019	4/9/2019	Truck & Bus				ROADSIDE INSPECTION SITE @ E/B LERDO HWY	SHAFTER	Yes	2011
2019	4/9/2019	Truck & Bus				ROADSIDE INSPECTION SITE @ E/B LERDO HWY	SHAFTER	Yes	2014
2019	4/9/2019	Truck & Bus				ROADSIDE INSPECTION SITE @ E/B LERDO HWY	SHAFTER	Yes	2013
2019	4/10/2019	HDVIP	Quick Snap			ROADSIDE INSPECTION SITE E/B @ LERDO HWY	SHAFTER	Yes	2015
2019	4/10/2019	HDVIP	ECL			ROADSIDE INSPECTION SITE E/B @ LERDO HWY	SHAFTER	Yes	2015
2019	4/10/2019	HDVIP	Tampering			ROADSIDE INSPECTION SITE E/B @ LERDO HWY	SHAFTER	Yes	2015
2019	4/10/2019	HDVIP	Quick Snap			ROADSIDE INSPECTION SITE E/B @ LERDO HWY	SHAFTER	Yes	2015
2019	4/10/2019	HDVIP	ECL			ROADSIDE INSPECTION SITE E/B @ LERDO HWY	SHAFTER	Yes	2015
2019	4/10/2019	HDVIP	Tampering			ROADSIDE INSPECTION SITE E/B @ LERDO HWY	SHAFTER	Yes	2015
2019	4/10/2019	HDVIP	Quick Snap			ROADSIDE INSPECTION SITE E/B @ LERDO HWY	SHAFTER	Yes	2015
2019	4/10/2019	HDVIP	ECL			ROADSIDE INSPECTION SITE E/B @ LERDO HWY	SHAFTER	Yes	2015

Year	Inspection Date	Program	Inspection	Citation issued (Y/N)	Violation Type (Emission or Non-Emission)	Street	City	DPF	Engine Year
2019	4/10/2019	HDVIP	Tampering			ROADSIDE INSPECTION SITE E/B @ LERDO HWY	SHAFTER	Yes	2015
2019	4/10/2019	HDVIP	Quick Snap			ROADSIDE INSPECTION SITE E/B @ LERDO HWY	SHAFTER	Yes	2012
2019	4/10/2019	HDVIP	ECL			ROADSIDE INSPECTION SITE E/B @ LERDO HWY	SHAFTER	Yes	2012
2019	4/10/2019	HDVIP	Tampering			ROADSIDE INSPECTION SITE E/B @ LERDO HWY	SHAFTER	Yes	2012
2019	4/10/2019	HDVIP	Quick Snap			ROADSIDE INSPECTION SITE E/B @ LERDO HWY	SHAFTER	Yes	
2019	4/10/2019	HDVIP	ECL	Y	Emission	ROADSIDE INSPECTION SITE E/B @ LERDO HWY	SHAFTER	Yes	
2019	4/10/2019	HDVIP	Tampering			ROADSIDE INSPECTION SITE E/B @ LERDO HWY	SHAFTER	Yes	
2019	4/10/2019	HDVIP	Quick Snap			ROADSIDE INSPECTION SITE E/B @ LERDO HWY	SHAFTER	Yes	2002
2019	4/10/2019	HDVIP	ECL			ROADSIDE INSPECTION SITE E/B @ LERDO HWY	SHAFTER	Yes	2002
2019	4/10/2019	HDVIP	Tampering			ROADSIDE INSPECTION SITE E/B @ LERDO HWY	SHAFTER	Yes	2002
2019	4/10/2019	HDVIP	Quick Snap			ROADSIDE INSPECTION SITE E/B @ LERDO HWY	SHAFTER	Yes	1999
2019	4/10/2019	HDVIP	ECL			ROADSIDE INSPECTION SITE E/B @ LERDO HWY	SHAFTER	Yes	1999
2019	4/10/2019	HDVIP	Tampering			ROADSIDE INSPECTION SITE E/B @ LERDO HWY	SHAFTER	Yes	1999
2019	4/10/2019	HDVIP	Quick Snap			ROADSIDE INSPECTION	SHAFTER	Yes	

Year	Inspection Date	Program	Inspection	Citation issued (Y/N)	Violation Type (Emission or Non-Emission)	Street	City	DPF	Engine Year
						SITE E/B @ LERDO HWY			
2019	4/10/2019	HDVIP	ECL			ROADSIDE INSPECTION SITE E/B @ LERDO HWY	SHAFTER	Yes	
2019	4/10/2019	HDVIP	Tampering			ROADSIDE INSPECTION SITE E/B @ LERDO HWY	SHAFTER	Yes	
2019	4/10/2019	HDVIP	Quick Snap			ROADSIDE INSPECTION SITE E/B @ LERDO HWY	SHAFTER	Yes	2012
2019	4/10/2019	HDVIP	ECL			ROADSIDE INSPECTION SITE E/B @ LERDO HWY	SHAFTER	Yes	2012
2019	4/10/2019	HDVIP	Tampering			ROADSIDE INSPECTION SITE E/B @ LERDO HWY	SHAFTER	Yes	2012
2019	4/10/2019	HDVIP	Quick Snap			ROADSIDE INSPECTION SITE E/B @ LERDO HWY	SHAFTER	Yes	2015
2019	4/10/2019	HDVIP	ECL			ROADSIDE INSPECTION SITE E/B @ LERDO HWY	SHAFTER	Yes	2015
2019	4/10/2019	HDVIP	Tampering			ROADSIDE INSPECTION SITE E/B @ LERDO HWY	SHAFTER	Yes	2015
2019	4/10/2019	HDVIP	Quick Snap			ROADSIDE INSPECTION SITE E/B @ LERDO HWY	SHAFTER	No	
2019	4/10/2019	HDVIP	ECL	Y	Emission	ROADSIDE INSPECTION SITE E/B @ LERDO HWY	SHAFTER	No	
2019	4/10/2019	HDVIP	Tampering			ROADSIDE INSPECTION SITE E/B @ LERDO HWY	SHAFTER	No	
2019	4/10/2019	HDVIP	Quick Snap			ROADSIDE INSPECTION SITE E/B @ LERDO HWY	SHAFTER	Yes	2013
2019	4/10/2019	HDVIP	ECL			ROADSIDE INSPECTION SITE E/B @ LERDO HWY	SHAFTER	Yes	2013

Year	Inspection Date	Program	Inspection	Citation issued (Y/N)	Violation Type (Emission or Non-Emission)	Street	City	DPF	Engine Year
2019	4/10/2019	HDVIP	Tampering			ROADSIDE INSPECTION SITE E/B @ LERDO HWY	SHAFTER	Yes	2013
2019	4/10/2019	HDVIP	Quick Snap			ROADSIDE INSPECTION SITE E/B @ LERDO HWY	SHAFTER	Yes	2013
2019	4/10/2019	HDVIP	ECL			ROADSIDE INSPECTION SITE E/B @ LERDO HWY	SHAFTER	Yes	2013
2019	4/10/2019	HDVIP	Tampering			ROADSIDE INSPECTION SITE E/B @ LERDO HWY	SHAFTER	Yes	2013
2019	4/10/2019	HDVIP	Quick Snap			ROADSIDE INSPECTION SITE E/B @ LERDO HWY	SHAFTER	Yes	2012
2019	4/10/2019	HDVIP	ECL			ROADSIDE INSPECTION SITE E/B @ LERDO HWY	SHAFTER	Yes	2012
2019	4/10/2019	HDVIP	Tampering			ROADSIDE INSPECTION SITE E/B @ LERDO HWY	SHAFTER	Yes	2012
2019	4/10/2019	HDVIP	Quick Snap			ROADSIDE INSPECTION SITE E/B @ LERDO HWY	SHAFTER	Yes	2017
2019	4/10/2019	HDVIP	ECL			ROADSIDE INSPECTION SITE E/B @ LERDO HWY	SHAFTER	Yes	2017
2019	4/10/2019	HDVIP	Tampering			ROADSIDE INSPECTION SITE E/B @ LERDO HWY	SHAFTER	Yes	2017
2019	4/10/2019	HDVIP	Quick Snap			ROADSIDE INSPECTION SITE E/B @ LERDO HWY	SHAFTER	Yes	2013
2019	4/10/2019	HDVIP	ECL			ROADSIDE INSPECTION SITE E/B @ LERDO HWY	SHAFTER	Yes	2013
2019	4/10/2019	HDVIP	Tampering			ROADSIDE INSPECTION SITE E/B @ LERDO HWY	SHAFTER	Yes	2013
2019	4/10/2019	HDVIP	Quick Snap			ROADSIDE INSPECTION	SHAFTER	Yes	2001

Year	Inspection Date	Program	Inspection	Citation issued (Y/N)	Violation Type (Emission or Non-Emission)	Street	City	DPF	Engine Year
						SITE E/B @ LERDO HWY			
2019	4/10/2019	HDVIP	ECL			ROADSIDE INSPECTION SITE E/B @ LERDO HWY	SHAFTER	Yes	2001
2019	4/10/2019	HDVIP	Tampering	Y	Emission	ROADSIDE INSPECTION SITE E/B @ LERDO HWY	SHAFTER	Yes	2001
2019	4/10/2019	HDVIP	Quick Snap			ROADSIDE INSPECTION SITE E/B @ LERDO HWY	SHAFTER	Yes	
2019	4/10/2019	HDVIP	ECL			ROADSIDE INSPECTION SITE E/B @ LERDO HWY	SHAFTER	Yes	
2019	4/10/2019	HDVIP	Tampering			ROADSIDE INSPECTION SITE E/B @ LERDO HWY	SHAFTER	Yes	
2019	4/10/2019	HDVIP	Quick Snap			ROADSIDE INSPECTION SITE E/B @ LERDO HWY	SHAFTER	Yes	2010
2019	4/10/2019	HDVIP	ECL			ROADSIDE INSPECTION SITE E/B @ LERDO HWY	SHAFTER	Yes	2010
2019	4/10/2019	HDVIP	Tampering			ROADSIDE INSPECTION SITE E/B @ LERDO HWY	SHAFTER	Yes	2010
2019	4/10/2019	HDVIP	Quick Snap			ROADSIDE INSPECTION SITE E/B @ LERDO HWY	SHAFTER	Yes	2009
2019	4/10/2019	HDVIP	ECL			ROADSIDE INSPECTION SITE E/B @ LERDO HWY	SHAFTER	Yes	2009
2019	4/10/2019	HDVIP	Tampering			ROADSIDE INSPECTION SITE E/B @ LERDO HWY	SHAFTER	Yes	2009
2019	4/10/2019	Smart Way				ROADSIDE INSPECTION SITE E/B @ LERDO HWY	SHAFTER	No	
2019	4/10/2019	TRU				ROADSIDE INSPECTION SITE E/B @ LERDO HWY	SHAFTER	No	

Year	Inspection Date	Program	Inspection	Citation issued (Y/N)	Violation Type (Emission or Non-Emission)	Street	City	DPF	Engine Year
2019	4/10/2019	TRU				ROADSIDE INSPECTION SITE E/B @ LERDO HWY	SHAFTER	No	
2019	4/10/2019	Truck & Bus				ROADSIDE INSPECTION SITE E/B @ LERDO HWY	SHAFTER	Yes	2012
2019	4/10/2019	Truck & Bus				ROADSIDE INSPECTION SITE E/B @ LERDO HWY	SHAFTER	Yes	2015
2019	4/10/2019	Truck & Bus				ROADSIDE INSPECTION SITE E/B @ LERDO HWY	SHAFTER	Yes	2015
2019	4/10/2019	Truck & Bus				ROADSIDE INSPECTION SITE E/B @ LERDO HWY	SHAFTER	Yes	2015
2019	4/10/2019	Truck & Bus				ROADSIDE INSPECTION SITE E/B @ LERDO HWY	SHAFTER	Yes	1999
2019	4/10/2019	Truck & Bus				ROADSIDE INSPECTION SITE E/B @ LERDO HWY	SHAFTER	Yes	
2019	4/10/2019	Truck & Bus				ROADSIDE INSPECTION SITE E/B @ LERDO HWY	SHAFTER	Yes	2002
2019	4/10/2019	Truck & Bus				ROADSIDE INSPECTION SITE E/B @ LERDO HWY	SHAFTER	Yes	
2019	4/10/2019	Truck & Bus				ROADSIDE INSPECTION SITE E/B @ LERDO HWY	SHAFTER	Yes	2013
2019	4/10/2019	Truck & Bus				ROADSIDE INSPECTION SITE E/B @ LERDO HWY	SHAFTER	Yes	2009
2019	4/10/2019	Truck & Bus				ROADSIDE INSPECTION SITE E/B @ LERDO HWY	SHAFTER	Yes	2013
2019	4/10/2019	Truck & Bus				ROADSIDE INSPECTION SITE E/B @ LERDO HWY	SHAFTER	Yes	2017
2019	4/10/2019	Truck & Bus				ROADSIDE INSPECTION	SHAFTER	Yes	2012

Year	Inspection Date	Program	Inspection	Citation issued (Y/N)	Violation Type (Emission or Non-Emission)	Street	City	DPF	Engine Year
						SITE E/B @ LERDO HWY			
2019	4/10/2019	Truck & Bus				ROADSIDE INSPECTION SITE E/B @ LERDO HWY	SHAFTER	Yes	2001
2019	4/10/2019	Truck & Bus				ROADSIDE INSPECTION SITE E/B @ LERDO HWY	SHAFTER	Yes	2010
2019	4/10/2019	Truck & Bus				ROADSIDE INSPECTION SITE E/B @ LERDO HWY	SHAFTER	Yes	
2019	4/10/2019	Truck & Bus				ROADSIDE INSPECTION SITE E/B @ LERDO HWY	SHAFTER	Yes	2015
2019	4/10/2019	Truck & Bus				ROADSIDE INSPECTION SITE E/B @ LERDO HWY	SHAFTER	Yes	2012
2019	4/10/2019	Truck & Bus				ROADSIDE INSPECTION SITE E/B @ LERDO HWY	SHAFTER	Yes	2013
2019	6/11/2019	Idling	Off-Road			MERCED AVE AND HIGHWAY 43	SHAFTER	No	
2019	6/11/2019	Off-Road				MERCED AVE AND HIGHWAY 43	SHAFTER	No	

APPENDIX 3 – CalEPA Complaint Data – 2019

Complaint Number	Created Date	Date Referred	AB 617	Abbreviated Description	Resolution
COMP-45804	8/19/2019	8/19/2019	Shafter	Stationary Source	Referred to appropriate agency