



# San Joaquin Valley

AIR POLLUTION CONTROL DISTRICT

## South Central Fresno Community Air Monitoring Report 2023 2<sup>nd</sup> Quarter (April – June)



## Table of Contents

I. Background .....	3
II. Summary of Findings for the Quarter.....	4
III. Status of Community Air Monitoring Network .....	4
IV. Mobile Air Monitoring Van Activities .....	5
V. Summary of PM <sub>2.5</sub> and VOC Speciation Analysis .....	6
VI. Appendix of Pollutant Species and Comparative Analysis .....	9

## I. Background

Assembly Bill (AB) 617, signed into law in July 2017, has resulted in a statewide effort to reduce air pollution and improve public health in communities that experience disproportionate burdens from exposure to air pollutants statewide through new community-focused and community-driven actions. AB 617 provides mechanisms and resources to implement community-specific air quality monitoring networks develop and implement emission reduction programs; improve availability of data and other technical information; and invest substantial funding in the community through voluntary incentive funding measures. South Central Fresno, a densely populated community within the city of Fresno, was selected as a first year community by CARB in September of 2018.

District staff provided assistance to the Community Steering Committee (CSC) members by helping them to develop their recommended air monitoring priorities. The District worked with CSC members as they reviewed and evaluated a variety of different resources, including maps of stationary sources, area sources, mobile sources, prevailing wind direction data, and sensitive receptor locations relative to sources of air pollution within the community. The CSC adopted their official recommendation on June 12, 2019, including the deployment of various air monitoring platforms within the community as a part of the [South Central Fresno Community Air Monitoring Plan \(CAMP\)](#).

The District has invested an extensive amount of work into implementing the CAMP, including researching, developing, configuring, deploying, trouble-shooting, and maintaining new state-of-the-art high precision air monitoring equipment. This also includes the use of the mobile air monitoring van to take measurements in a variety of locations of interest and to respond to community concerns. The District has also contracted with analytical laboratories to conduct the needed analysis to speciate the VOC and PM2.5 samples being taken in the community. In addition, the District has worked closely with organizations to negotiate leases to authorize the deployment of the equipment on site, followed by logistical, electrical, and site preparation work for the installation of the air monitoring equipment.

### **Access to Data from South Central Fresno Community Air Monitoring Network**

In addition to quarterly reports, the District is continuing its efforts to enhance the availability of air monitoring data and information to ensure that the community is fully apprised of the ongoing air monitoring efforts and are receiving the latest air quality information. This includes continued regular updates to the Community Steering Committee (CSC), continuously posting real-time and historical air monitoring data, and bilingual weekly updates in South Central Fresno, which are all available on the [South Central Fresno Air Monitoring webpage](#). In addition, raw hourly data from the South Central Fresno community air-monitoring network are also being sent to CARB and are now available on CARB's statewide [AQView data portal](#).

## II. Summary of Findings for the Quarter

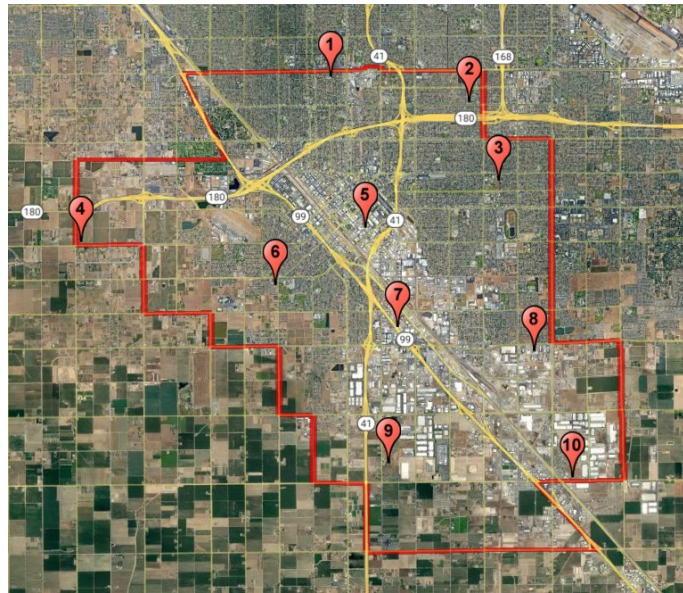
Through the continued implementation of the South Central Fresno CAMP during this period, the following was observed among the pollutants monitored:

- Pollutant concentrations were low during early April as a result of superior dispersion conditions. During mid to late April, there was weak high pressure, causing both Ozone and PM concentrations to increase.
- Mid to late May and June were dominated by alternating weak high and low pressure systems. During the brief periods of high pressure, air quality deteriorated into the Moderate to Unhealthy for Sensitive Groups categories.
- Stable meteorological conditions led to four days in April, three days in May, and 2 days in June where at least two sites exceeded the federal 8-hour Ozone standard of 70 ppb.
- During this period acetaldehyde, acetone, ethanol, isopropanol, and methanol were the primary VOCs detected. Overall, during this monitoring period the concentrations of VOCs detected in the samples taken were well below health-based thresholds.
- See Appendix for further analysis including Heat Maps and Charts

## III. Status of Community Air Monitoring Network

Consistent with the community recommended air monitoring network design, the District has fully implemented the community air-monitoring plan for South Central Fresno. The following map and table detail the network design for the South Central Fresno CAMP, as well as the status of implementing each specified air monitoring site.

**Figure 1 Design and Status of South Central Fresno Community Air Monitoring Network**



**Table 1 Status of South Central Fresno Community Air Monitoring Network**

Location	Site Location	Monitoring Platform	Implemented (Y/N)
1	Heaton Elementary School	Real-time PM2.5	Y
2	Yosemite Middle School	Real-time PM2.5	Y
3	Roosevelt High School	Real-time PM2.5	Y
4	Madison Elementary School	Real-time PM2.5	Y
5	Bitwise South Stadium	Real-time PM2.5	Y
6	Edison High School	Compact Multi-Pollutant	Y
7	Fresno-Foundry Park	Real-time PM2.5	Y
8	Fresno-Drummond	Ozone, NO2, PM10	Y
9	West Fresno Middle School	Compact Multi-Pollutant	Y
10	Malaga Elementary School	Air Monitoring Trailer	Y

#### IV. Mobile Air Monitoring Van Activities

During this quarterly air, monitoring period mobile air monitoring van data was not available; however, the District plans to continue to utilize the mobile air monitoring vans for the AB617 South Central Fresno community in the future. For reference, a detailed table of all community air monitoring data collected with the mobile air monitoring van is available on the Fresno community air-monitoring [website](#).

## V. Summary of PM<sub>2.5</sub> and VOC Speciation Analysis

To build a better understanding of the various constituents that compose the overall PM<sub>2.5</sub> and Volatile Organic Compound (VOC) concentrations in the South Central Fresno community, in November 2019 the District began operating PM<sub>2.5</sub> and VOC speciation sampling at the Fresno-Foundry site near the intersection of Jensen Avenue and Highway 99. On June 23, 2020, VOC and PM<sub>2.5</sub> speciation air monitoring efforts were shifted to the air-monitoring trailer at Malaga Elementary School. On March 11, 2022, PM<sub>2.5</sub> speciation was relocated to Edison High School to help assess potential sources contributing to elevated PM<sub>2.5</sub> in the area. The collected samples were sent to a third-party laboratory for analysis to determine the contribution of various species of PM<sub>2.5</sub>, as well as the various species of VOCs in the air sampled in the community.

Details on the types of species measured through this analysis, and potential activities, can be found in the appendix to this report.

### **PM<sub>2.5</sub> Speciation Analysis**

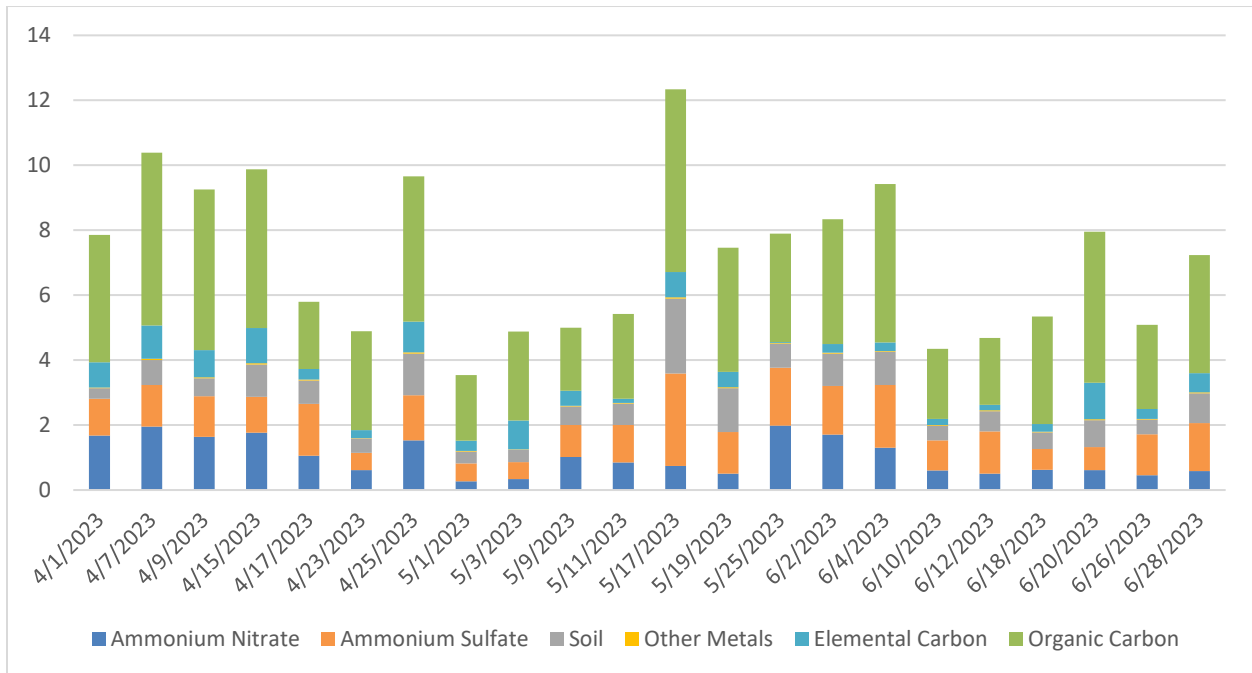
The following figures show the PM<sub>2.5</sub> speciation concentrations and relative comparison of the various PM<sub>2.5</sub> species sampled at the Edison High School air-monitoring site. Twenty-two samples were collected over a three-month period during the timeframe of this report to gain a better understanding of the composition of the PM<sub>2.5</sub> in the surrounding areas of Edison High School.

Superior dispersion conditions were common at the start of the second quarter of 2023, allowing for PM<sub>2.5</sub> concentrations to remain low. Weak high pressure prevailed during the middle of the second quarter, causing PM<sub>2.5</sub> concentrations to increase. At the end of the second quarter of 2023, dispersive conditions brought PM<sub>2.5</sub> concentrations back down.

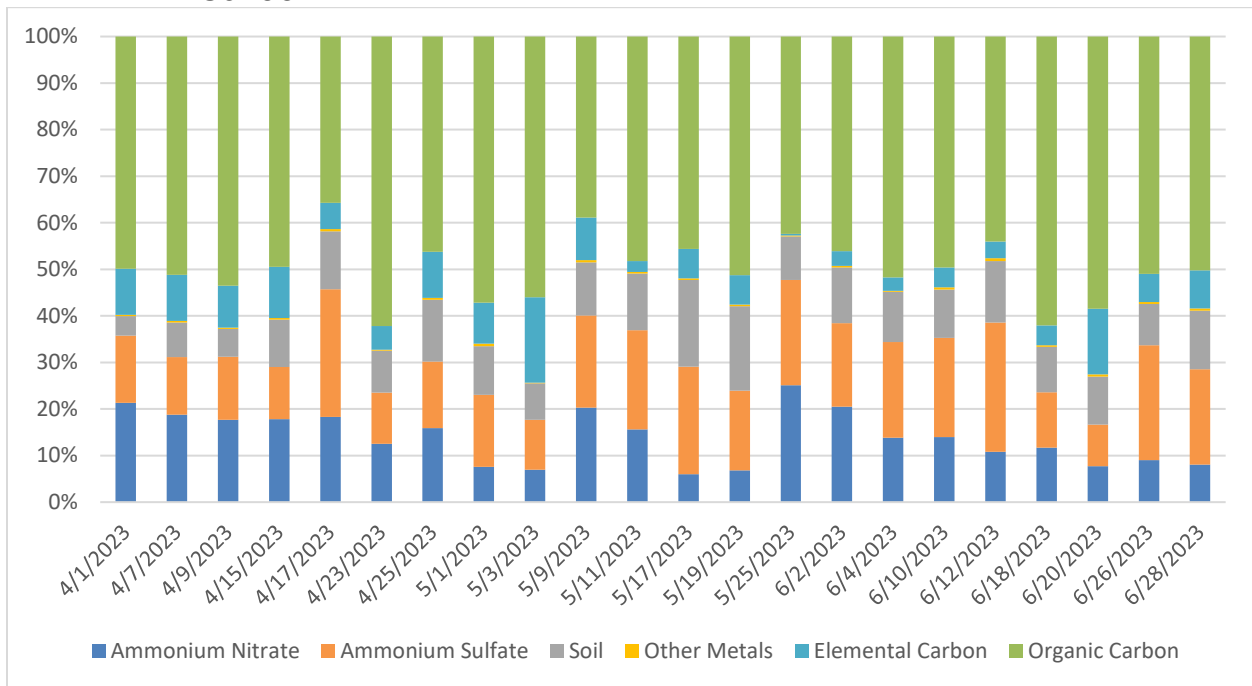
This analysis shows that during this quarter, the highest concentrations of PM<sub>2.5</sub> were primarily driven by ammonium nitrate, ammonium sulfate, and organic carbon. Combustion emissions are a source of organic carbon. Noticeably, organic carbon constitutes a large portion of the total speciation results, which can be an indicator of combustion emissions impacts on PM<sub>2.5</sub> measurements this quarter. Additional details on organic carbon and other PM<sub>2.5</sub> species can be found in the Appendix.

Levoglucosan is an organic compound that is commonly used as a chemical tracer for biomass burning. Levoglucosan can be used to measure possible smoke impacts as levoglucosan levels can indicate what percentage of PM<sub>2.5</sub> may come from sources such as forest, grassland, and agricultural waste burning. Twenty-two speciation samples were taken throughout the quarter with only eleven samples having detectable Levoglucosan concentrations. For dates that contain no bar, levoglucosan values were recorded but were below the detection limit of the instrument which resulted in a null value.

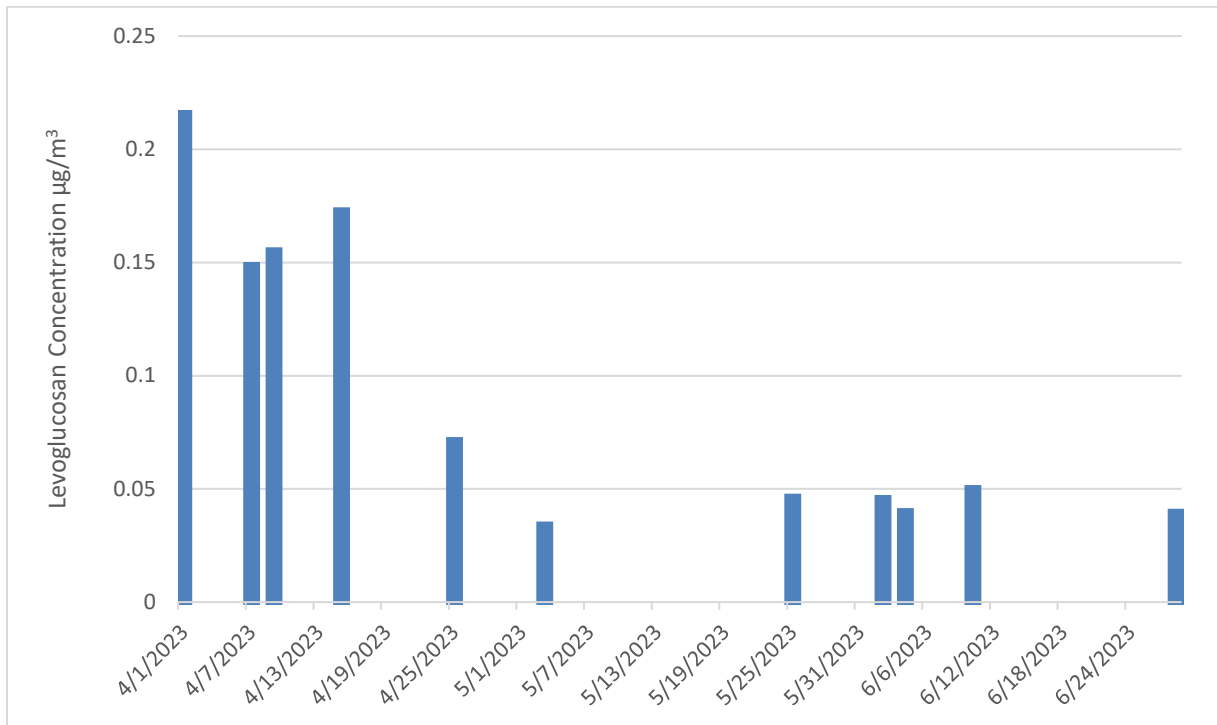
**Figure 2 Speciated PM<sub>2.5</sub> Concentrations at Edison High School**



**Figure 3 Relative Comparison of PM<sub>2.5</sub> Species Measured at Edison High School**



**Figure 4 Wood Burning Tracer (Levoglucosan) Concentrations at Edison High School**



### **VOC Speciation Analysis**

VOCs are carbon-chained compounds that vaporize in ambient conditions. Among these compounds are BTEX, 1, 3-butadiene, PAH, aldehydes, naphthalene, and diethanolamine. These compounds are typically emitted from products such as paints, inks, organic solvents, petroleum products, and vehicle exhaust. The health effects of these compounds vary but long term exposure can have lasting adverse health effects. A more detailed list of possible VOCs and the associated health effects is provided by the California Office of Environmental Health Hazard Assessment (OEHHA)<sup>1</sup>.

During this period, the District collected 22 air samples for laboratory analysis. The VOC laboratory analysis is capable of isolating concentrations of 83 VOC species, however during this period most VOCs were not detected in the atmosphere.

During this period, acetaldehyde, acetone, ethanol, isopropanol, and methanol were the primary VOCs detected. Of these five, only acetaldehyde and methanol have an associated Reference Exposure Level (REL), a health risk metric established by the Office of Environmental Health Hazard Assessment (OEHHA). Overall, during this monitoring period, the concentrations of VOCs detected in the samples taken, were well

<sup>1</sup> <https://oehha.ca.gov/air/general-info/oehha-acute-8-hour-and-chronic-reference-exposure-level-rel-summary>



below health-based thresholds. Below is a summary of the potential sources and a comparison of the peak concentration with the associated OEHHA REL. Green colored values represent pollutant concentrations that are below the applicable REL, while orange colored values represent elevated values or values above the applicable REL. All shaded values in the table below are colored green and no concerning concentrations of VOCs were detected in the samples taken.

**Table 2 Summary of VOC Speciation Analysis for Malaga Elementary School**

Pollutant	Potential Sources of Emission	Short Term Impact		Long Term Impact	
		Max Measured [24-hour] (ppb)	OEHHA Acute REL [1-hour] (ppb)	Average Measured [Annual] (ppb)	OEHHA Chronic REL [Annual] (ppb)
Methanol	Automobile exhaust, solvent use, and naturally from vegetation and microbes	370	21,367	222.3	3,052
Acetaldehyde	Wood combustion in fireplaces and woodstoves, coffee roasting, burning of tobacco, vehicle exhaust fumes, and coal refining and waste processing	3.3	261	2.7	78

## VI. Appendix of Pollutant Species and Comparative Analysis

### Overview of PM2.5 Species

The nature and formation of PM2.5 in the San Joaquin Valley is highly complex as it can be composed of any material that has a diameter of 2.5 microns or less. PM2.5 can be emitted directly as primary PM2.5 from various sources or formed secondarily through chemical reactions in the atmosphere. The resulting ambient PM2.5 mixture can include aerosols (fine airborne solid particles and liquid droplets) consisting of components of nitrates, sulfates, organic carbon, black carbon, soil, trace metals, and more.

PM2.5 in the Valley is comprised of many species that contribute to the total PM2.5 mass. This complex mixture is attributable to emissions from stationary, mobile, and area-wide sources, as well as naturally occurring emissions. Although the list of species contributing to PM2.5 in the Valley is lengthy, it can be grouped into larger representative categories. The following is a brief description of each of these larger species categories:

- **Ammonium Nitrate:** Ammonium nitrate is formed from the reaction of ammonia and nitric acid, where the nitric acid is formed from emissions of nitrogen oxides.

- **Ammonium Sulfate:** Ammonium sulfate is formed from the reaction of ammonia and sulfuric acid, where the sulfuric acid is formed primarily from emissions of sulfur dioxide, with smaller amounts forming from direct emissions of sulfur.
- **Organic carbon:** Organic carbon (OC) are generated as primary organic aerosol, predominantly through the combustion of hydrocarbons. Key sources include cooking, industrial processes, mobile source exhaust, tire wear, and wood burning. Secondary organic aerosols are formed from the oxidation of motor vehicle hydrocarbons, wood burning, solvent use, and industrial processes.
- **Black Carbon:** Black carbon is also known as soot or elemental carbon, and is formed during incomplete combustion in fuels, including mobile exhaust (mainly diesel) and wood burning.
- **Soil:** This category consists of road dust and soil dust that are entrained in the air from activity, such as soil disturbance or airflow from traffic.
- **Other Metals:** Identified as components from soil emissions or found in other particulates having been emitted in connection with combustion from engine wear, brake wear, and similar processes. Certain metals are also emitted from the use of fireworks.
- **Wood Burning Tracers:** Levoglucosan is an example of a hydrocarbon formed from the combustion of cellulose and hemicellulose, or wood burning. Levoglucosan can be used as a tracer to understand if PM<sub>2.5</sub> is coming from wood burning.

### **Comparative Analysis of Measured Pollutants**

The following spatial comparison map depicts the quarterly PM<sub>2.5</sub> averages and locations of each site within the community. Good air quality is represented in the map by the light yellow, light green and light blue colors. Moderate air quality and above is represented by darker blues and purples based on how high the quarterly average is for that site. Clovis is shown in Table 3 as a reference to a regulatory air monitoring site. It is not shown in Figure 4 due to the distance from the South Central Fresno community.

**Table 3 PM2.5 Quarterly Averages**

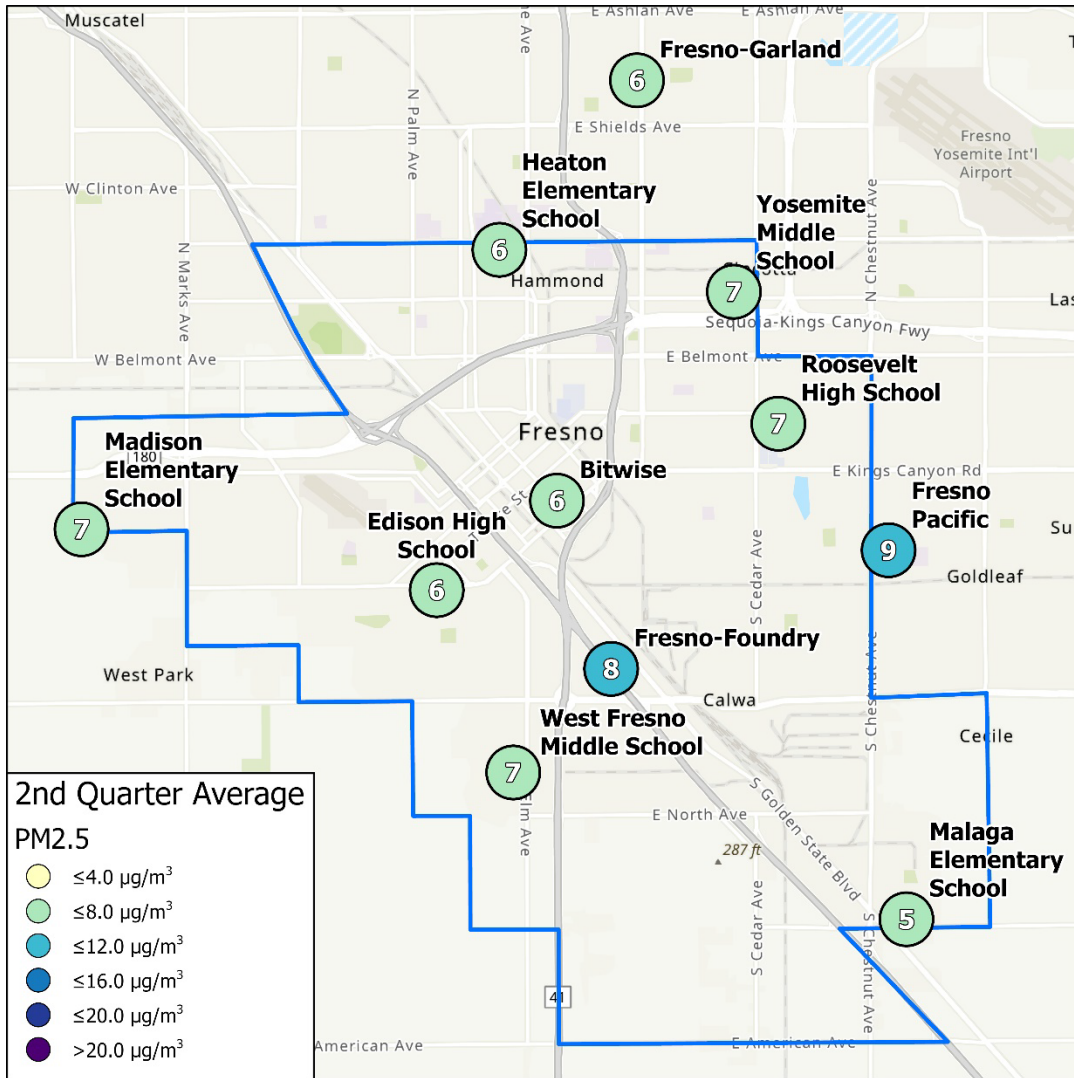
a) Quarterly average PM2.5 concentrations

Quarter	Heaton Elementary School	Yosemite Middle School	Malaga Elementary School	West Fresno Middle School	Madison Elementary School	Edison High School
2023 Q2	6.3	6.8	5.0	6.6	6.5	6.3

b) Quarterly average PM2.5 concentrations (continued)

Quarter	Roosevelt High School	Bitwise South Stadium	Clovis	Fresno-Garland	Fresno-Foundry	Fresno Pacific University
2023 Q2	6.9	5.7	6.5	6.4	8.2	9.4

**Figure 5 Spatial Comparison of PM<sub>2.5</sub> Quarterly Averages**



### Pollutant Concentration Heat Maps

The following Heat Maps provide a comparative analysis of various pollutants being measured at the air monitoring sites as a part of the community air-monitoring network. The color scales for each table are based on the Air Quality Index (AQI) or the associated Reference Exposure Level (REL).

The second quarter of 2023 experienced patterns of alternating weak disturbances and moderate stability. April was characterized by several series of good dispersion conditions which were followed by short periods of poor dispersion. These stable conditions led to higher Ozone concentrations with some sites experiencing an exceedance of the federal 8-hour Ozone standard of 70 ppb. During the month of May, multiple systems brought increased winds and dispersive conditions for the majority of the month. During the month of May, multiple systems brought increased winds and dispersive conditions for the majority of the month. Throughout the quarter, between dispersive troughs, high pressure caused moderate air quality due to PM<sub>2.5</sub> across the community.

The Malaga Ozone monitor was not operating from early May through June.

