

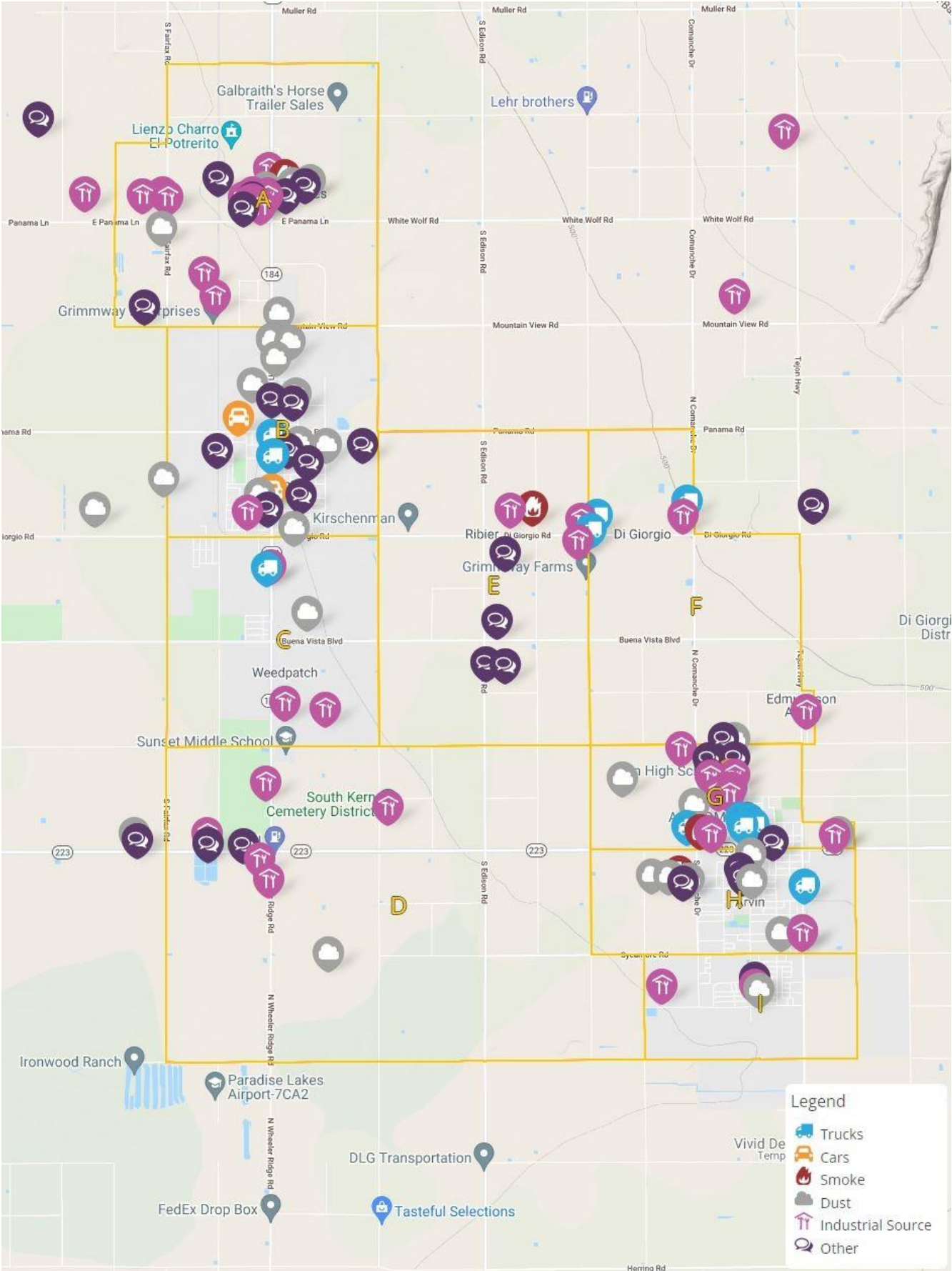
# Informational packet to prepare for the Arvin-Lamont CSC discussion to consider monitoring site locations

Enclosed, in order:

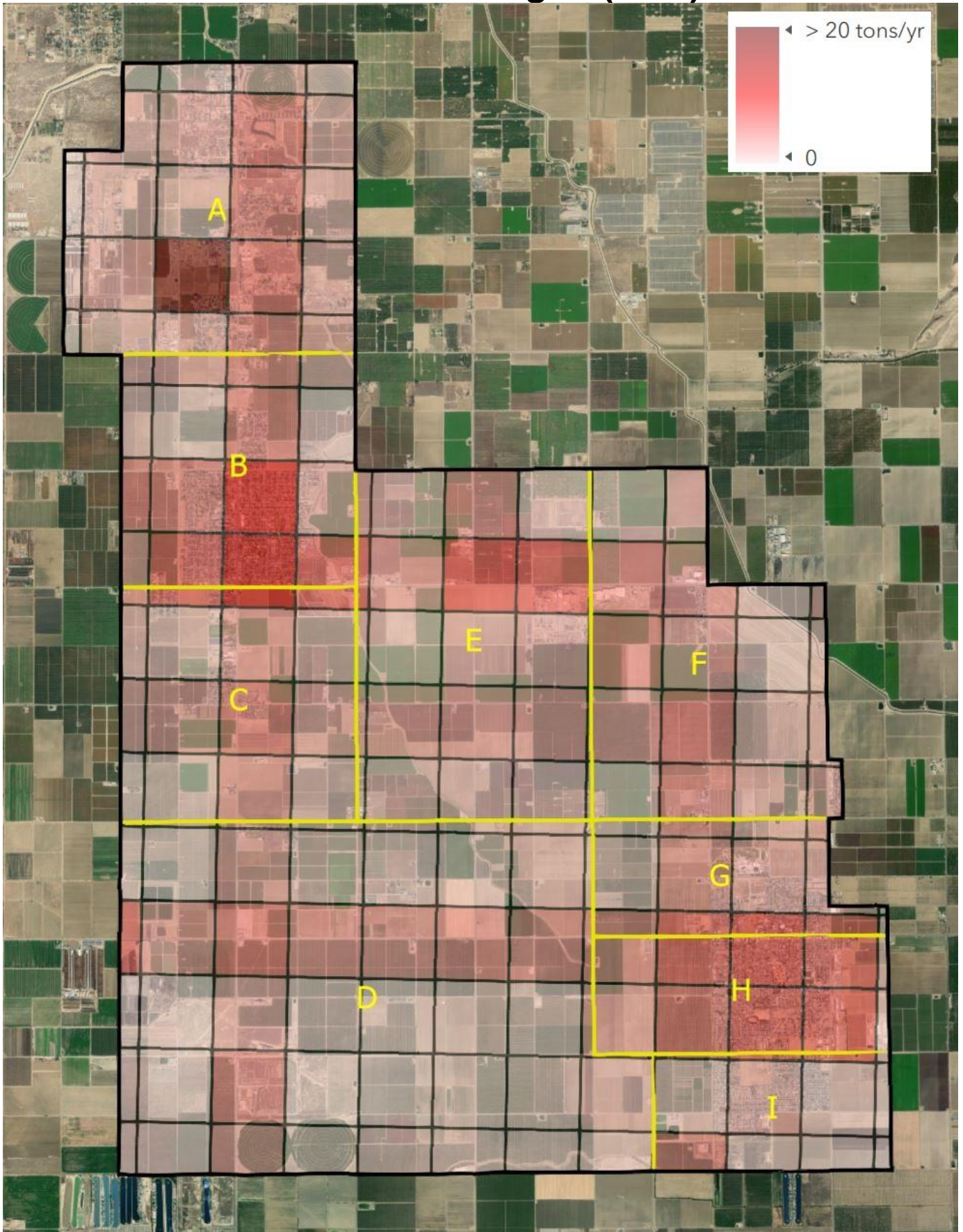
- One map showing the Sources of Concern identified by the CSC during the July 28, 2021 meeting
- Four maps, each showing the total emissions for a different pollutant:
  - Oxides of Nitrogen (NOx)
  - Volatile Organic Compounds (VOC)
  - Fine Particulate Matter (PM2.5)
  - Diesel Particulate Matter (Diesel PM)
- One map showing the locations of Sensitive Receptors in the community

*Note: The yellow letters 'A' through 'I' on each map designate possible monitoring zones.*

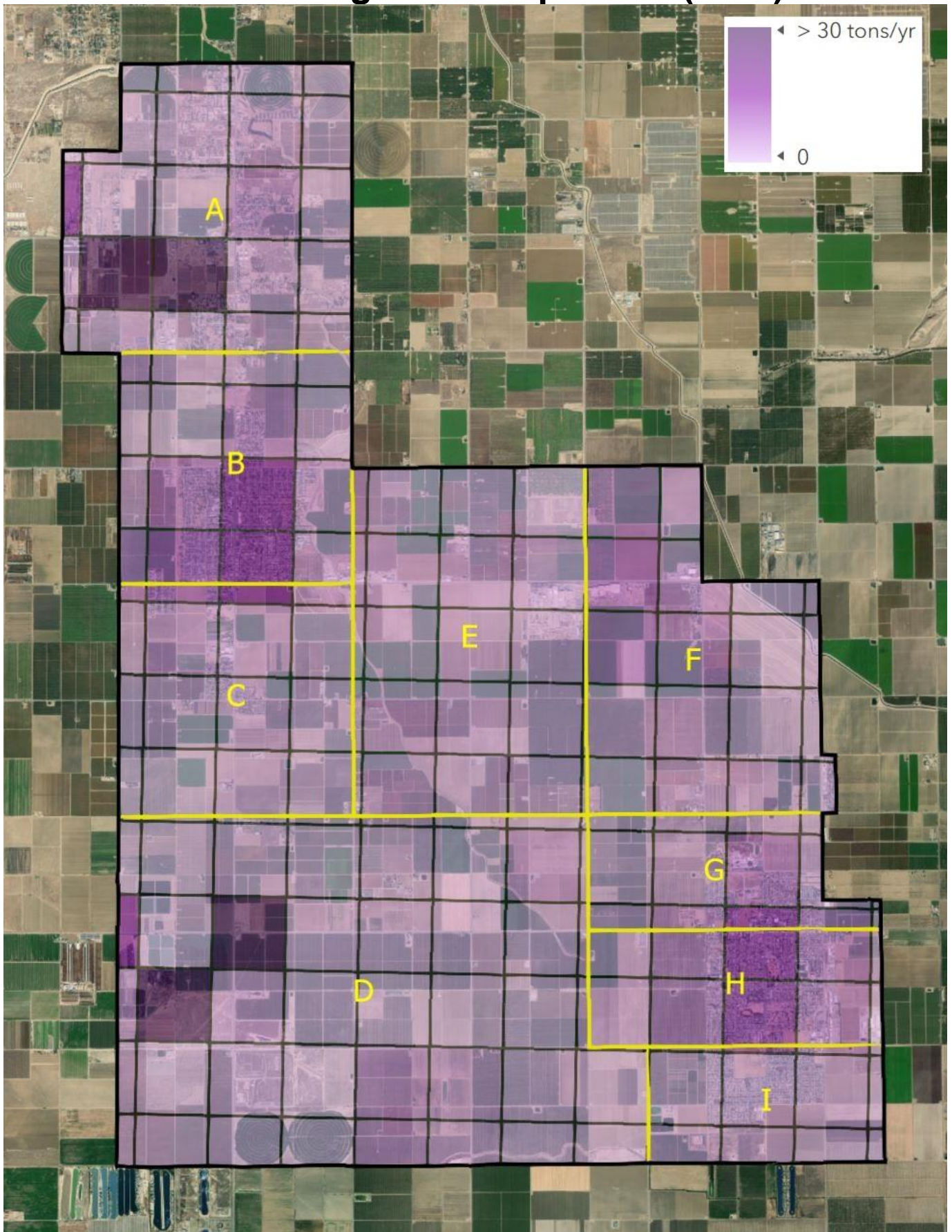
# Sources of Concern



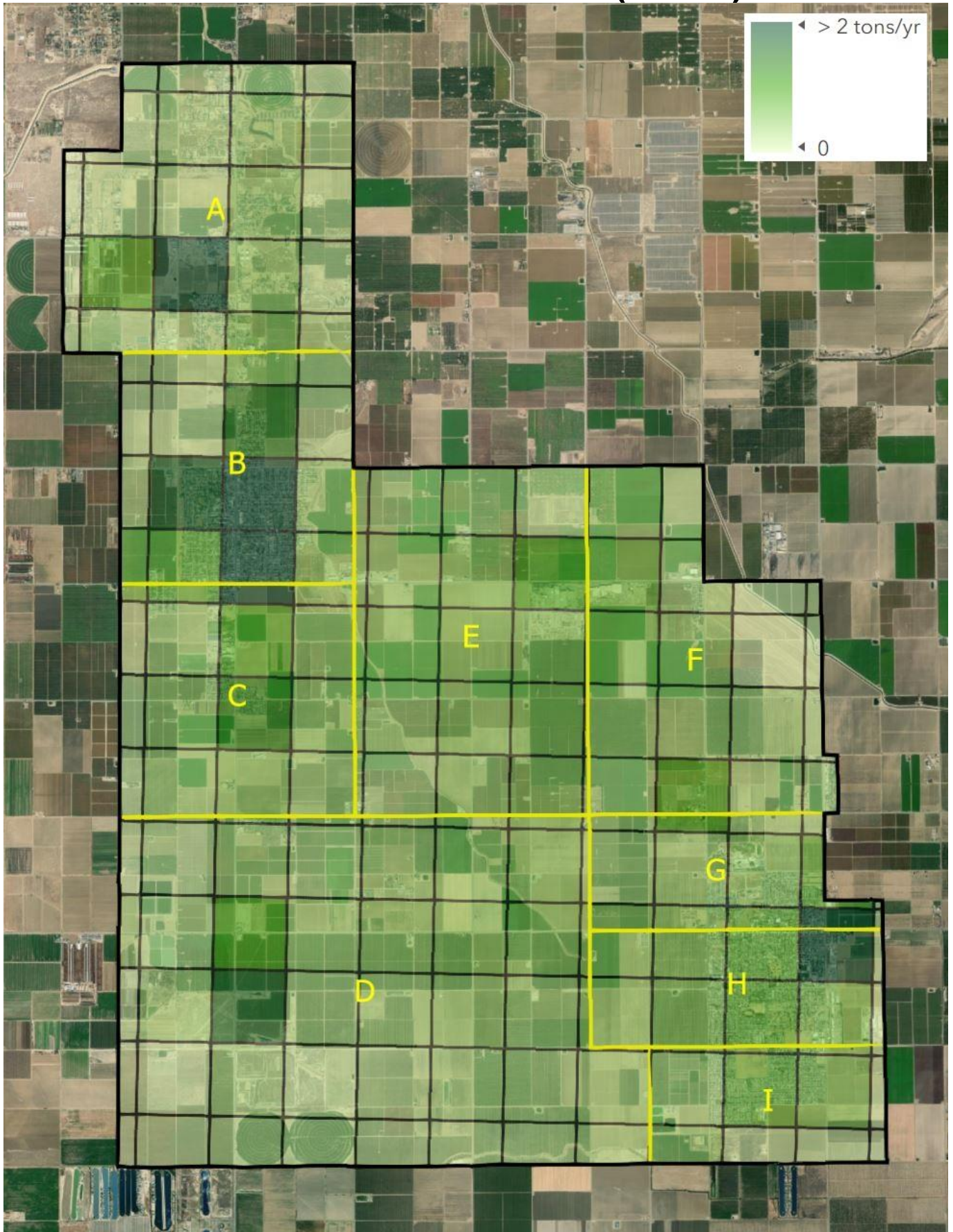
# Oxides of Nitrogen (NOx)



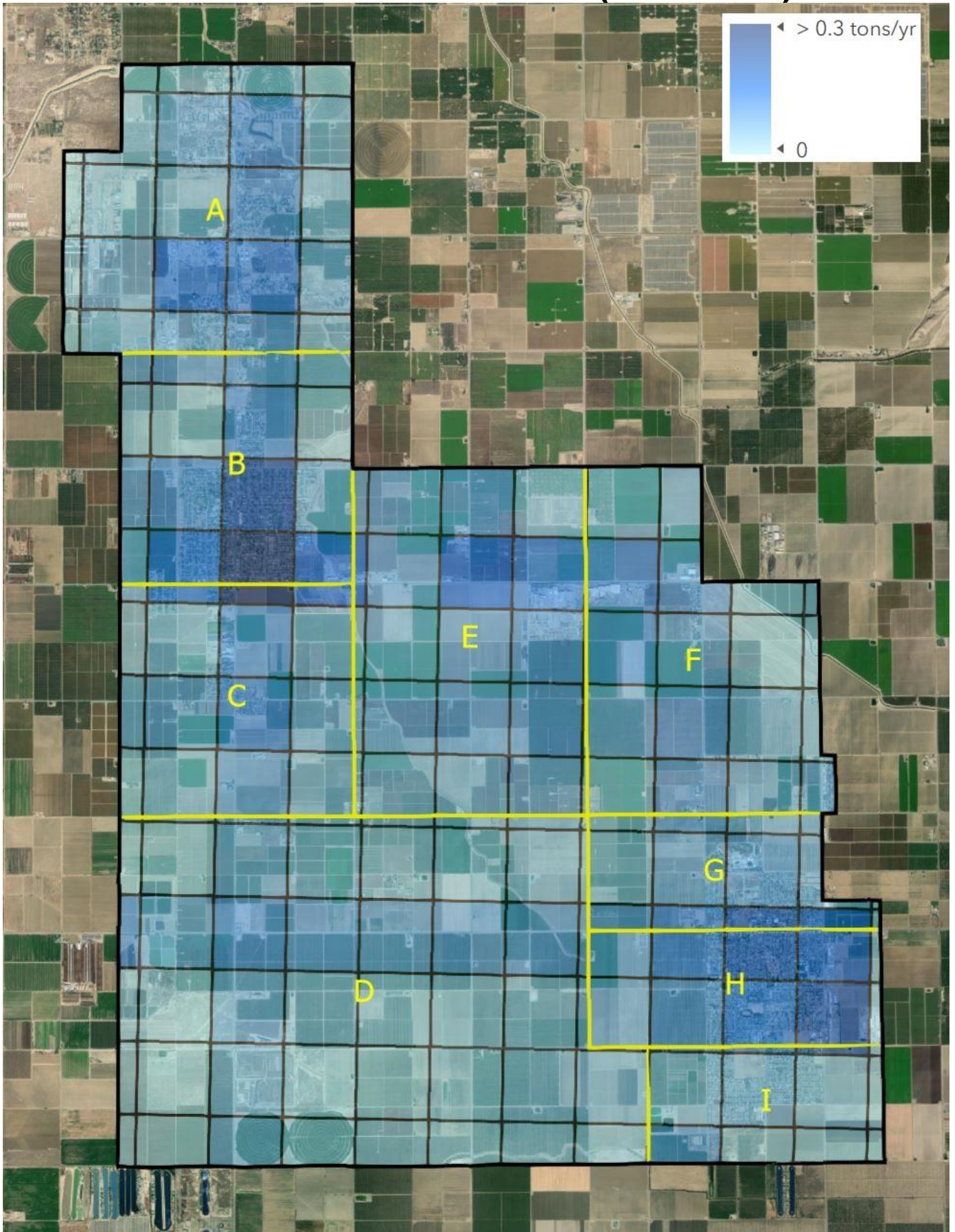
# Volatile Organic Compounds (VOC)



# Fine Particulate Matter (PM2.5)



# Diesel Particulate Matter (Diesel PM)



# Sensitive Receptors

