



SOUTH CENTRAL FRESNO AB 617 COMMUNITY TRUCK REROUTE STUDY AND HEALTH ASSESSMENT

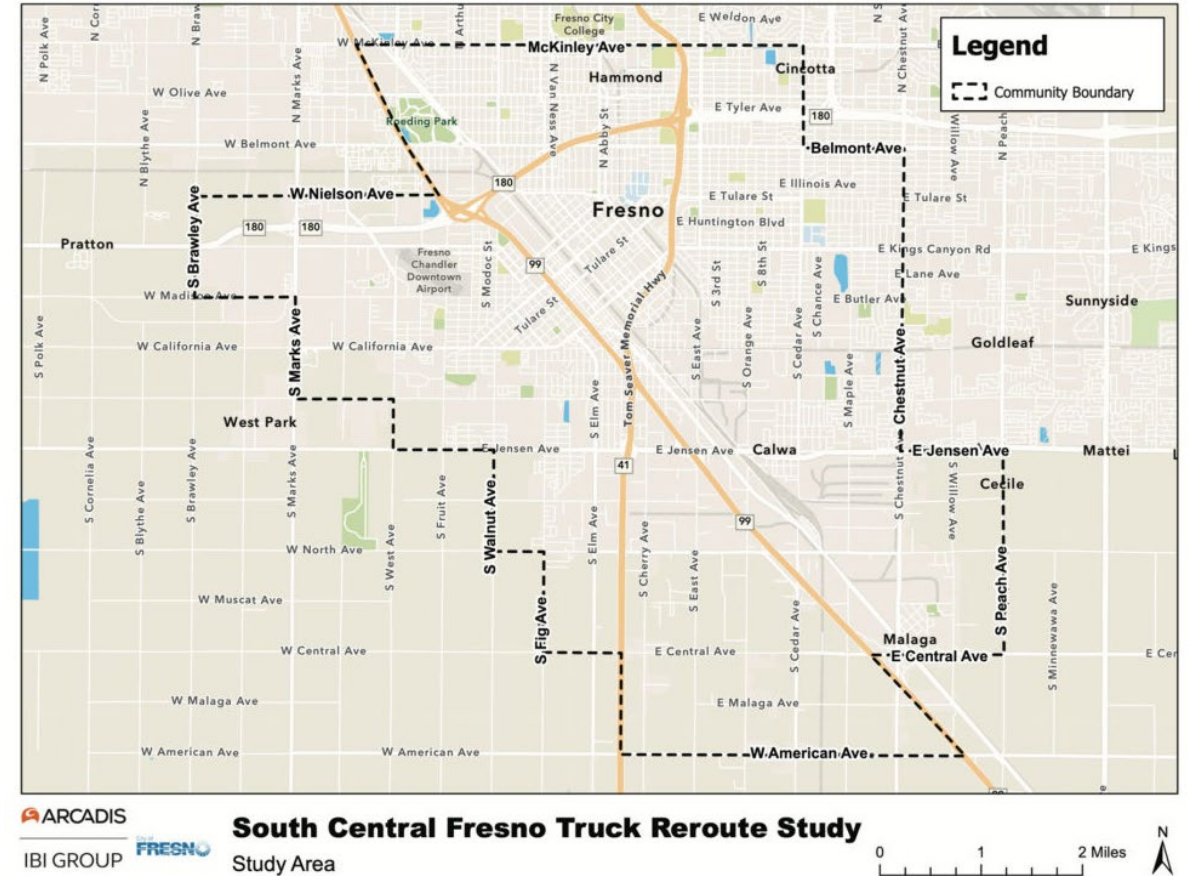
FRESNO CSC MEETING

PRESENTED BY THE CITY OF FRESNO

JANUARY 17, 2024

Why were these studies prepared?

- To decrease truck impacts and improve community safety in South Central Fresno while maintaining or increasing, goods movement and productivity.
- Assess the extent to which air pollution exposures influence the risk of common health outcomes.
- Explore residents health experience that are related to air pollution in the region.





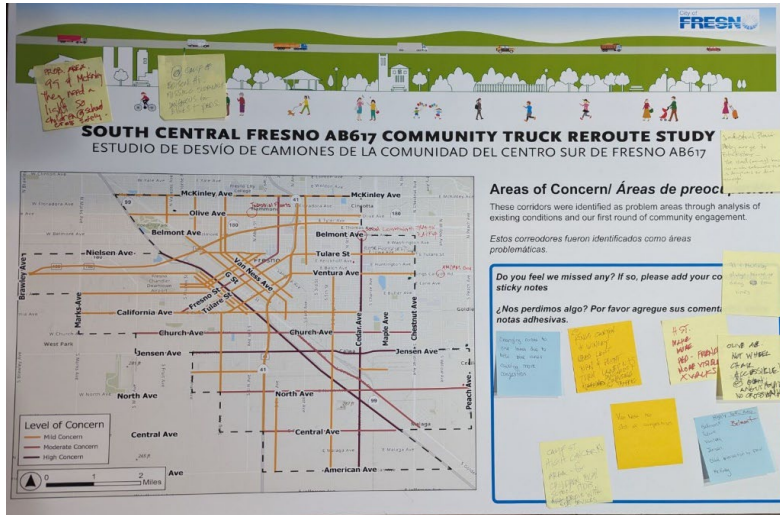
COMMUNITY OUTREACH

Outreach Summary – Existing Conditions Phase

- **March 2023: One-Hour Stakeholder Interviews (Virtual and In-Person)**
 - 7 persons interviewed
- **March 2023: Survey #1**
 - 60 completed
- **September & October 2023: Pop-Up Events – Fiestas Patrias & Trunk or Treat at Maxie L. Parks Community Center**
 - 600+ total in-person interactions at two events
- **Promotions**
 - Flyers, e-blasts, social media messages and press releases distributed for all outreach activities. Project website updated.

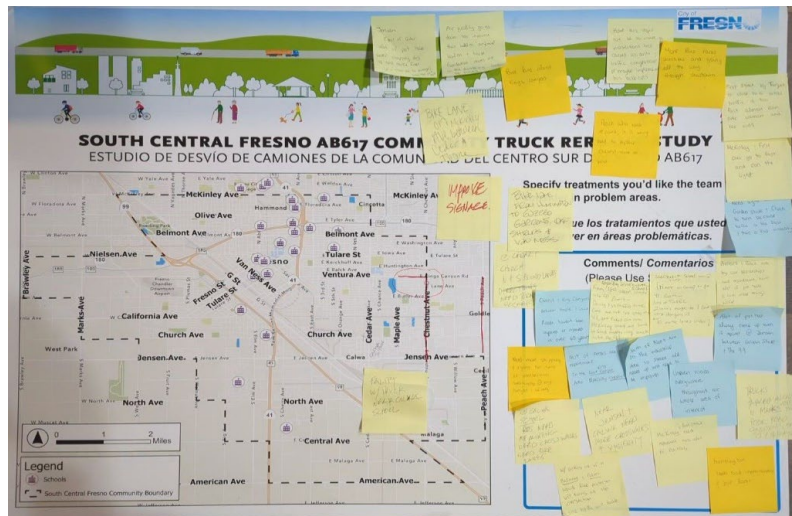


Outreach Summary – Existing Conditions Phase



Feedback Themes:

- **Pedestrian and bicyclist safety issues**
 - Missing sidewalks and crosswalks near important destinations
 - Not enough separation between trucks and other users
 - Lack of bike lanes
 - Queueing at freeway on-ramps cause unsafe conditions
- **Truck behavior issues**
 - Trucks drive at unsafe speeds and don't observe signs, especially near schools
 - Idling due to unsynchronized traffic signals
- **Roadway infrastructure issues**
 - Damaged street surfaces, potholes



Outreach Summary – Digital Media



SAMPLE OF ONE OF THE SOCIAL MEDIA POSTS

- **Impressions – 21,825**
 - The number of times the truck reroute study content was displayed (whether clicked or not) across social media platforms - Facebook, Instagram, Twitter, Nextdoor (posted in study area only) and LinkedIn over multiple posts.
- **Reach – 10,867**
 - The number of people who saw the truck reroute study content on **Facebook only**. Reach analytics were not available for other platforms.
- **Engagement - 261**
 - The number of interactions to the truck reroute study content such as likes, comments, shares, saves, etc. on Facebook, Instagram and Twitter only. Engagement analytics were not available for remaining platforms.

Community Health Survey

- 1,766 representative sample of South Fresno Residents

Demographics	Survey sample		Target population
	N (%)	N (weighted %)	N (%) ^a
Age (years)			
18-34	517 (30)	38.0	37.8
35-54	669 (38.8)	33.8	33.6
55-74	483 (28)	23.1	23.0
75+	57 (3.3)	5.1	5.6
Sex (n, %)			
Female	923 (52.3)	51.9	49.3
Male	834 (47.3)	47.6	50.7
Not disclosed	8 (0.5)		
Race/ethnicity (n, %)			
White	243 (15.3)	21	20.9
Black	272 (17.1)	5.5	5.5
Hispanic	817 (51.4)	60.3	60.0
Asian/Pacific Islanders	41 (2.6)	10.5	11.0
Native American/Alaskan	28 (1.8)	0.5	0.5
Multirace	151 (9.5)	1.8	1.8
Other	36 (2.3)	0.3	0.3
Education <HS (n,%)	477 (27.5)	26.8	27.8
Did not work last week (n,%)	523 (34.8)	37.4	38.4

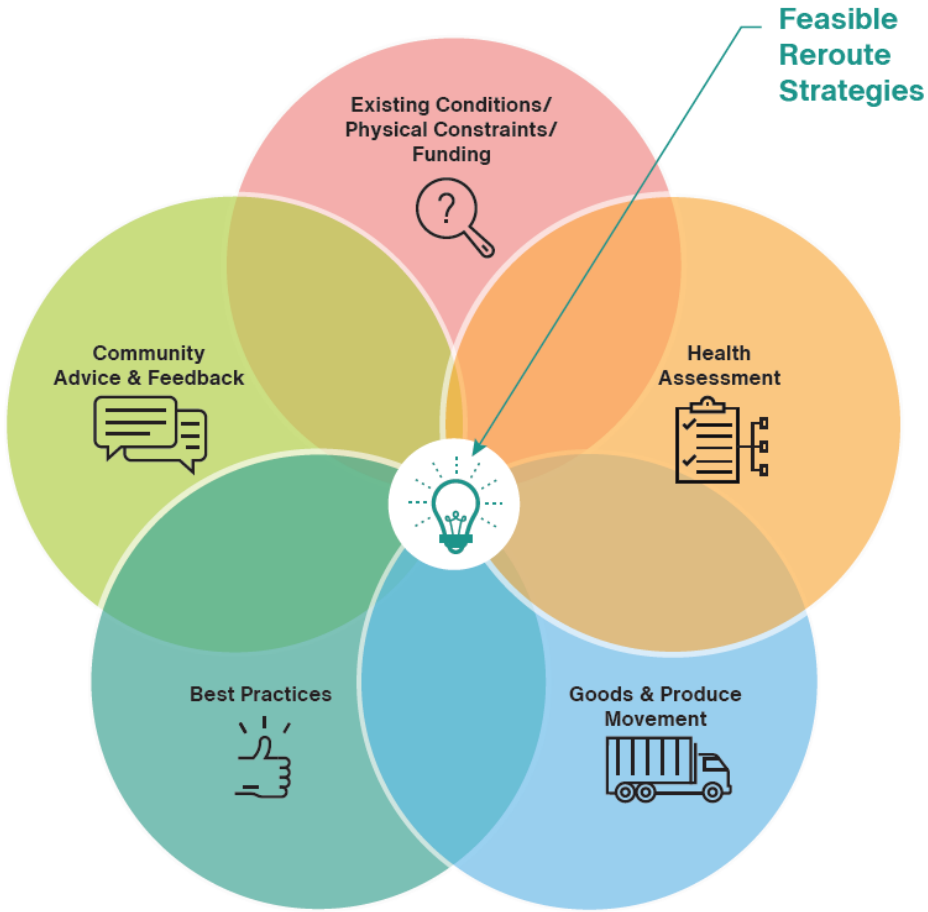
^aData were estimated from the Public Use Micro Sample data (2017-2021) from the US Census.



A photograph of a white RL Carriers semi-trailer truck parked on a paved road. The truck features green and white branding with the text 'RL CARRIERS', 'www.rlc.com', and 'Available Liftgate Service'. A smaller sign on the side of the trailer reads 'Anything Anywhere Anytime!'. In the background, a white water tower and some trees are visible under a clear sky. The entire image is overlaid with a semi-transparent teal filter.

DRAFT STRATEGY DEVELOPMENT

Key Considerations for Feasible Reroute Strategies



Strategy Toolkit

New Sidewalks



Close gaps in the existing sidewalk network

Roadway Maintenance



Remove potholes and cracks that reduces truck maintenance and GHG emissions

Traffic Signalization Improvement



Improve intersections to enhance safety and flow of traffic

New & Improved Crosswalks



Create new crosswalks and restripe existing crosswalks to increase visibility

Traffic Calming



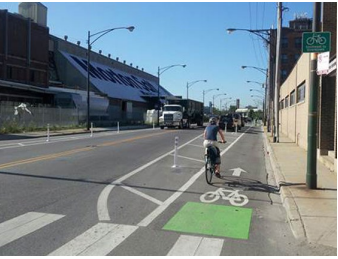
Implement measures to reduce truck speeds or divert trucks

Roadway Reconfiguration



Accommodate alternative modes or alter truck movements

New Bike Lanes



Dedicated travel lanes to enhance bicycle accessibility and safety

Truck-Focused Signage



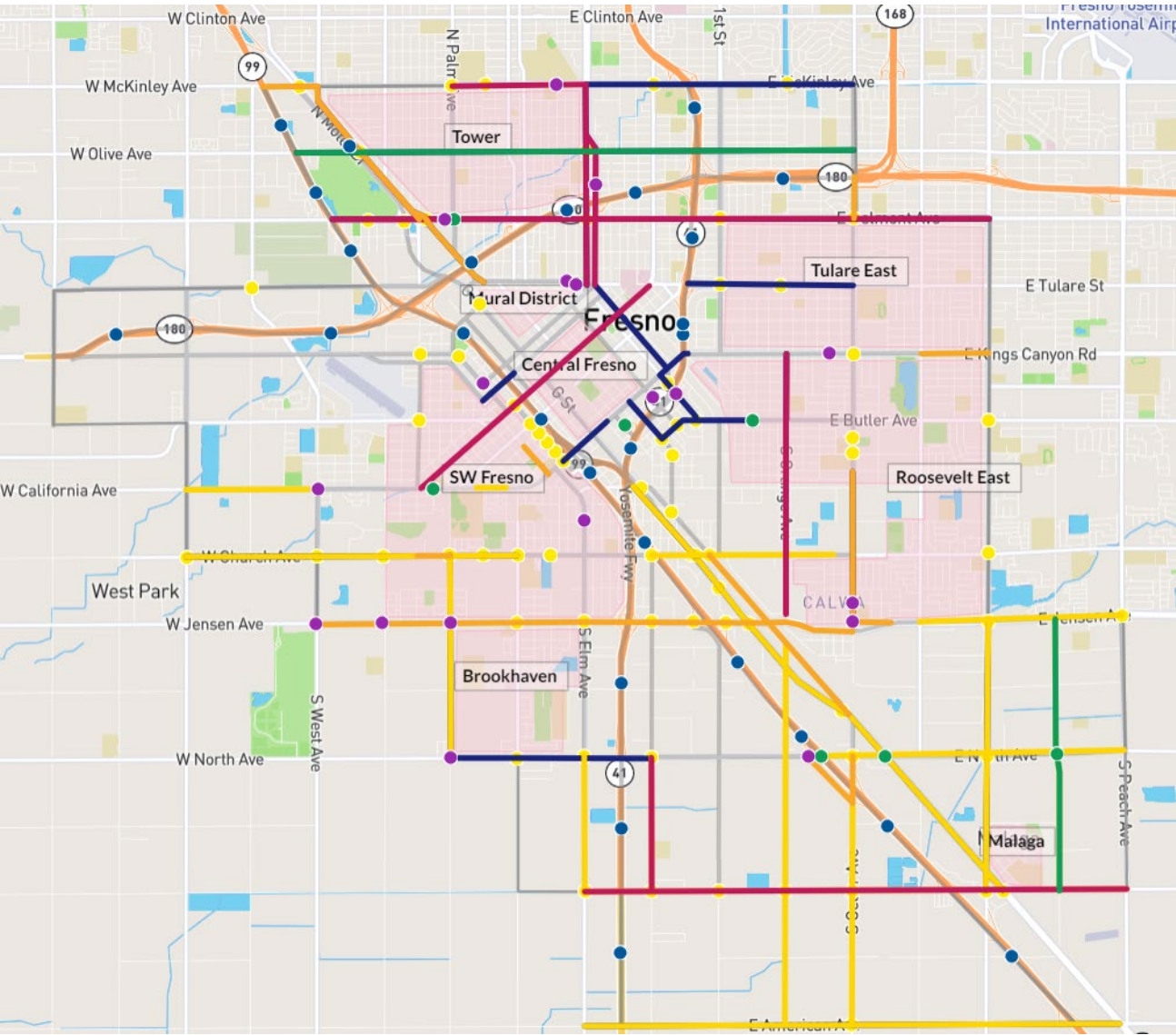
Informs truck drivers on truck routes and regulated areas

Truck Regulated Area



Creates a boundary around sensitive receptors that can be used to limit truck bypass

Strategy Map



-  New & Improved Crosswalks
-  Traffic Signalization Improvement
-  Truck Focused Signage
-  New Sidewalks
-  New Bike Lanes
-  Traffic Calming
-  Roadway Maintenance
-  Roadway Reconfiguration
-  Truck Regulated Area

Non-Infrastructure Strategies

Education & Outreach Programming

- Ensures drivers are aware of routing changes and optimizes new routes

Truck Fuel-type, Emissions, and Idling Standards

- Allows trucks to operate efficiently and produce fewer emissions

Truck-specific GPS Administration

- Provides info for critical route restrictions avoiding sensitive receptors

Time-of-Day Restrictions

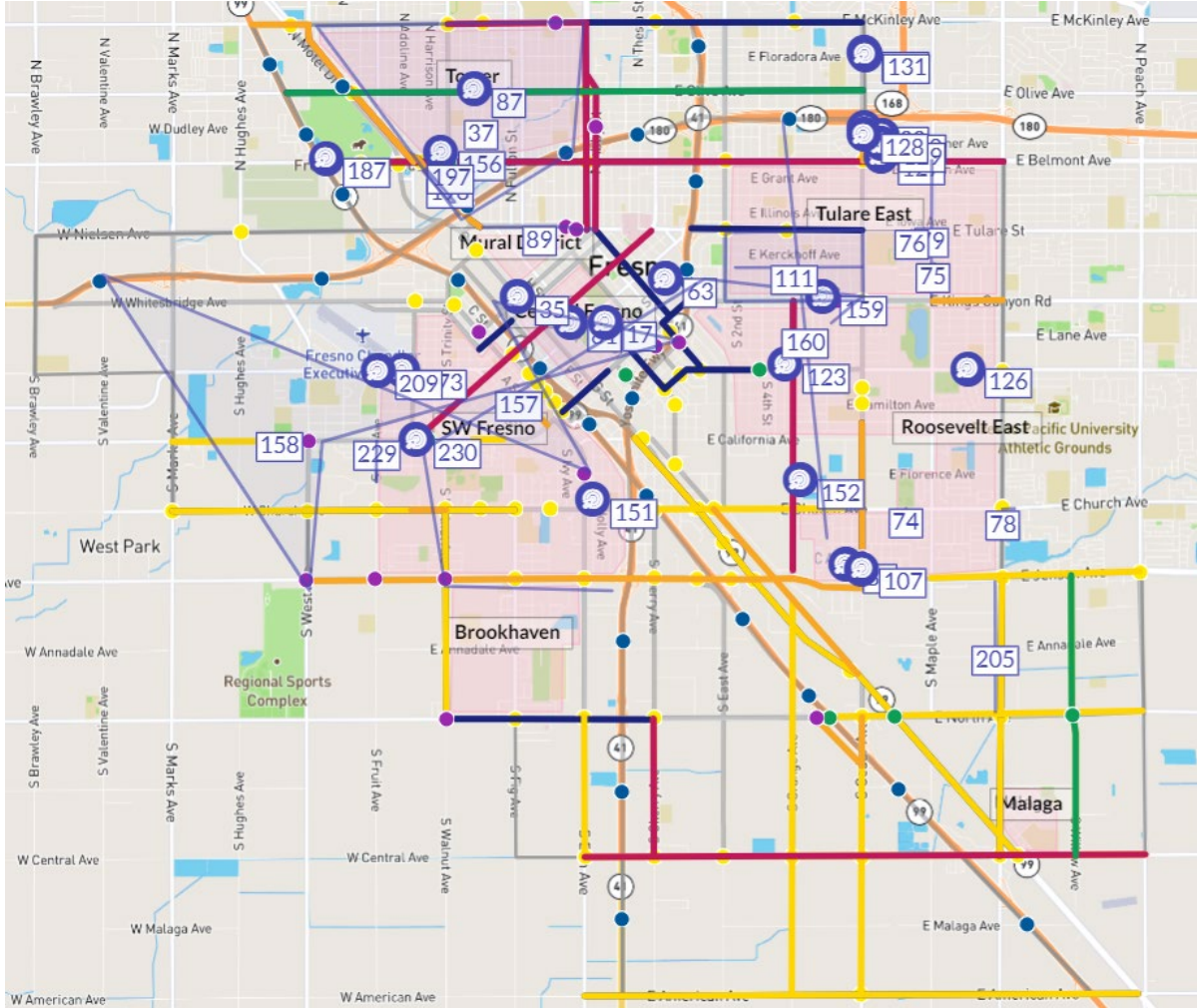
- Minimizes peak time congestion and improves safety

Enforcement

- Helps maintain order and safety on roadways and deters violations



Outreach Summary – Draft Strategies Phase



Feedback:

- **Survey results:**
 - 256 visitors to the survey
 - 85 completed surveys
 - 468 individual votes/comments/additions to the strategies map
- **Concerns:**
 - Online accessibility
 - Survey release was too close to holidays
 - Would like to see more feedback from the south/southeast part of the study area
 - Would like more clarity on coordination with health impact assessment



HEALTH ASSESSMENT

Health Assessment Draft Report

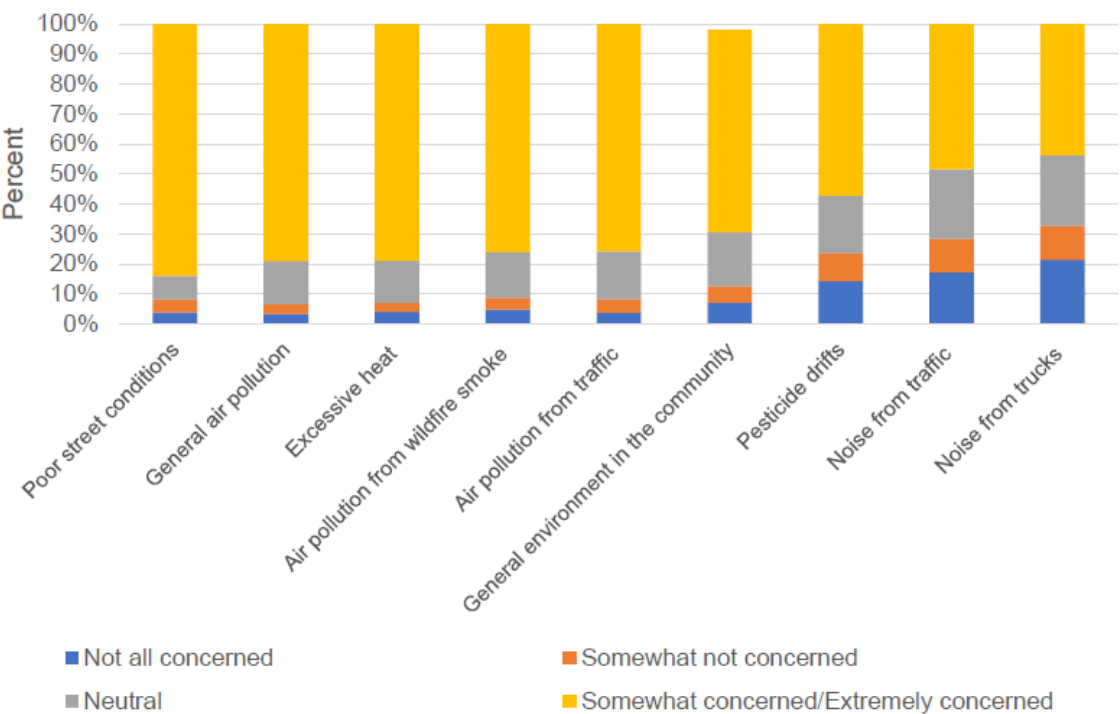
- **Pollution & Adverse Birth Outcomes**
- **Air Pollution & Asthma**
- **Air Pollution & Cardio-Cerebral Vascular Disease**
- **Community-Based Health Survey in South Fresno AB 617 Communities**



Health Assessment Draft Report

Feedback:

Residents' concerns about the environment in their community



Survey results:

- 1,766 surveys
- More than 40% of participants had one or more chronic conditions
- Many unable to rest because of air pollution & traffic or truck noise and experienced more health outcomes
- The majority wants policy action
- 84% support truck reroute to reduce pollution in their neighborhood

Health Assessment Summary

- Living within 1,000 feet of a highway or truck route was associated with increased risk of pre-term birth and infant mortality rates
- Living within 300 feet of a major road was associated with these risks
- Impacts stronger within the AB 617 community
- PM_{2.5} and ozone increased short-term risks of asthma and cardio-cerebrovascular disease, effects were mostly seasonal
- Effects of pollutants were stronger among communities of color and within the AB 617 community boundaries



NEXT STEPS

What's Next...

- Community meeting to present findings of Draft Implementation Plan and Health Assessment
 - Malaga Recreation Center - January 18, 2024
- Public review & comment period - February 12 – March 4
- Planning Commission and City Council Hearings – Spring 2024

A semi-truck with 'RL CARRIERS' branding is driving on a road. The truck has a white trailer with green and black stripes and the text 'RL CARRIERS' and 'www.rlc.com'. The trailer also has 'OF2267' and 'Liftgate service' written on it. In the background, there is a water tower and some trees. The entire image has a teal overlay.

Thank You!

<https://www.fresno.gov/publicworks/south-central-truck-re-route-study/>