

Update on Residential Woodsmoke Reduction Measures

South Central Fresno Community Steering Committee
August 11, 2021

RB.1 Incentives to Replace Wood Burning Devices

Enhanced access to incentives to replace existing wood burning devices and pellet stoves with natural gas or electric technologies

\$1,500,000 to replace 500 wood burning devices

\$3,000 per device

How to apply

www.valleyair.org/BurnCleaner



- 1) Complete voucher application
 - *Requires info and photos of old device*
- 2) Once approved, visit a program retailer to order a new device
 - *11 program retailers in Fresno/Clovis all offer low income instant rebate*
- 3) After installation, complete and return voucher redemption packet

RB.3 Enhanced Enforcement of Wood Burning Curtailments

Enforcement of District Rule 4901 to limit impacts associated with the failure to comply with mandatory curtailments

At least 4 hours of surveillance in community on each declared curtailment day for the next 5 winter seasons

RB. 4 Outreach to Reduce Illegal Activity

Reduce illegal burning of residential waste through outreach and education

Host workshops, geo-targeted outdoor ads in areas with frequent violations, postcard mailers to county residents in rural areas

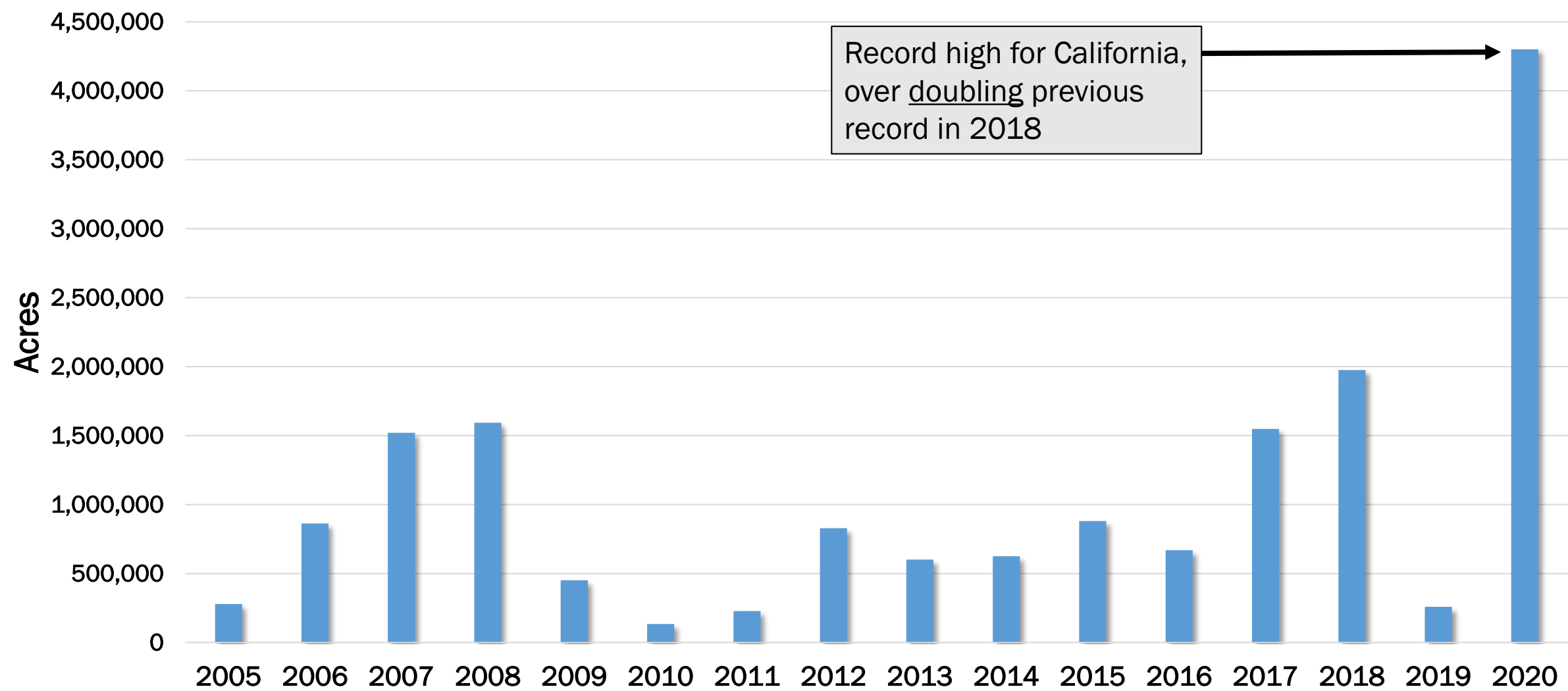


RB.5 Enhanced Enforcement to Reduce Illegal Burning of Residential Waste

Enforcement to limit the potential for localized impacts associated with illegal open burning of residential waste

Targeted surveillance efforts within the South-Central Fresno community and surrounding areas at least once per quarter for the next 5 years

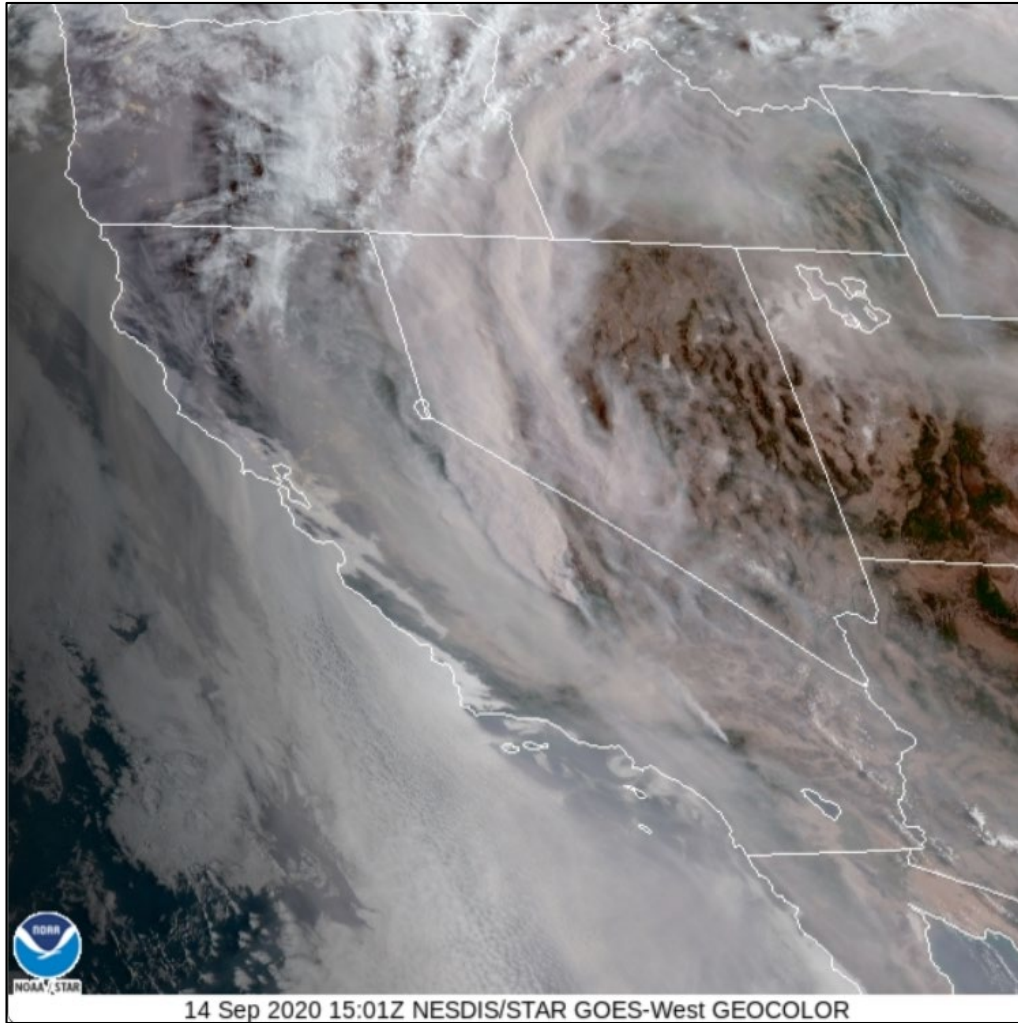
2020 Sets Record for Wildfire Acres Burned in California



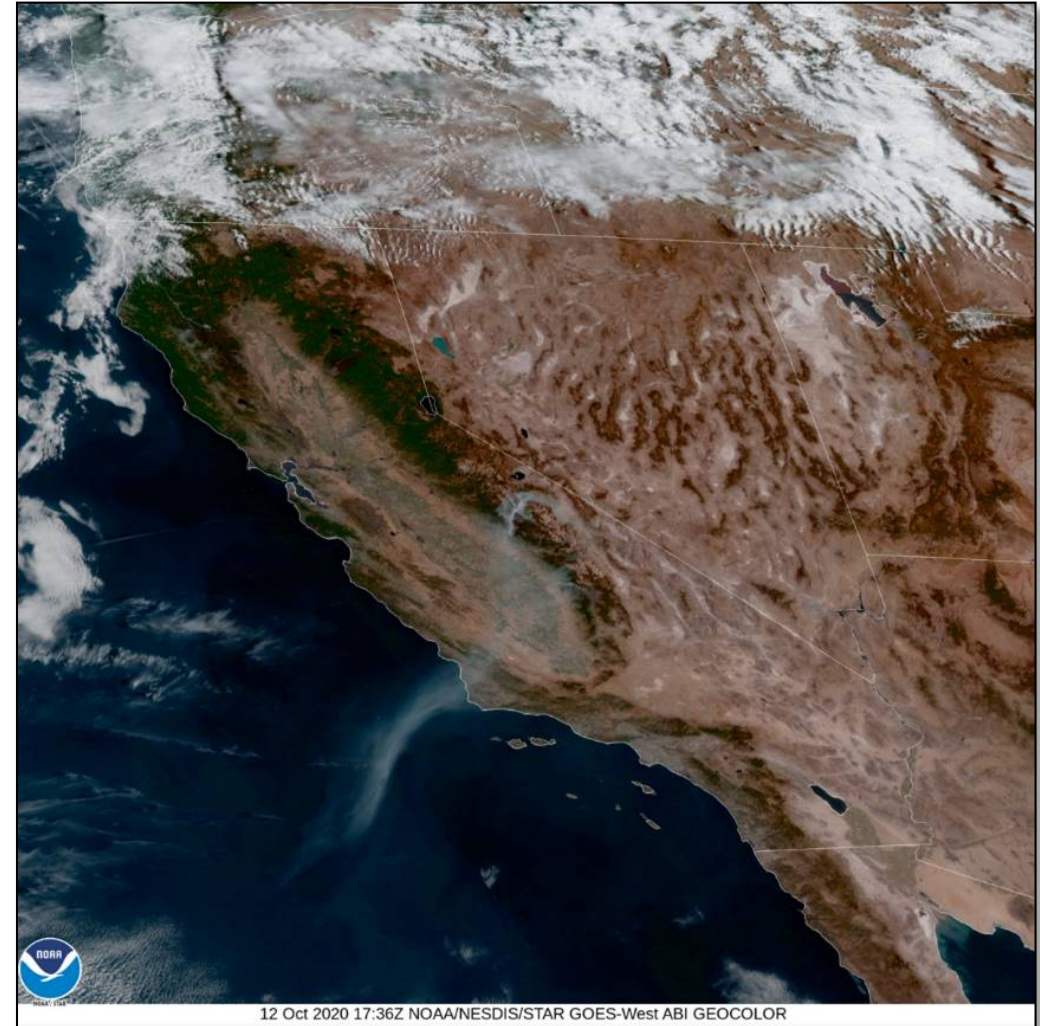
Source: CalFire

Visual Comparison of Western U.S. in September/October

September 14, 2020



October 12, 2020



2021-2021 Winter Season Abnormally Dry

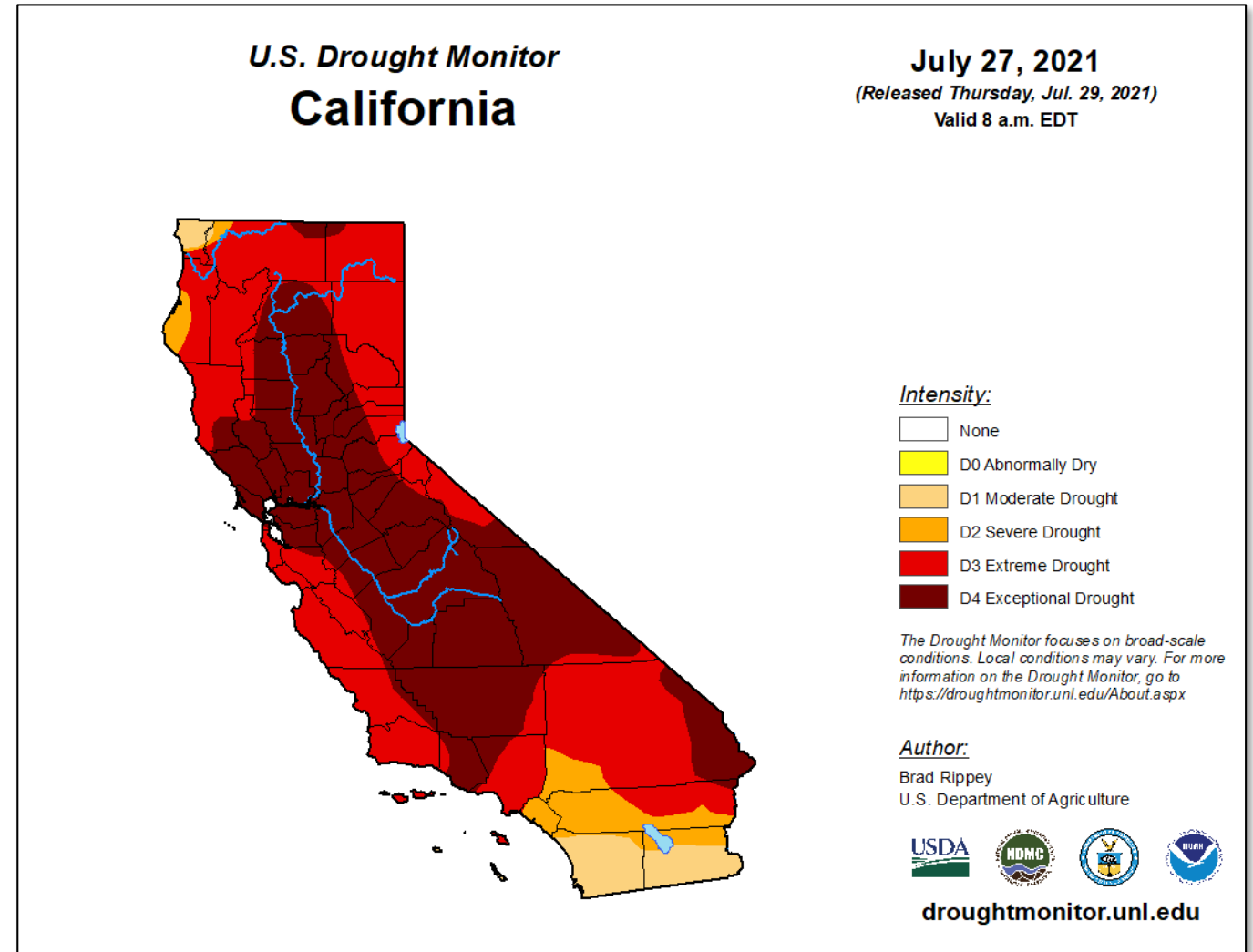
- Average of only 6.8 inches of precipitation across the region from October 2020 through April 2021
 - Several counties recorded one of their driest winter seasons on record

| | San Joaquin | Stanislaus | Merced | Madera | Fresno | Kings | Tulare | Kern |
|-------------------------------------|-----------------|------------------|-----------------|-----------------|-----------------|-----------------|-----------------|-----------------|
| <i>Rainfall (Inches)</i> | 6.92" | 7.58" | 6.42" | 9.94" | 8.62" | 3.88" | 7.8" | 2.99" |
| <i>Rank in 127 Years</i> | 6 th | 11 th | 6 th | 5 th | 5 th | 9 th | 2 nd | 1 st |

Source: <https://www.ncdc.noaa.gov/cag/county/rankings>

Drought Conditions Worsening in California

- All regions of California experiencing drought conditions
 - Valley counties categorized as “Exceptional” drought
- Forest fuel build-up, high summer temperatures, extreme drought conditions point to potential severity of 2021 wildfire season

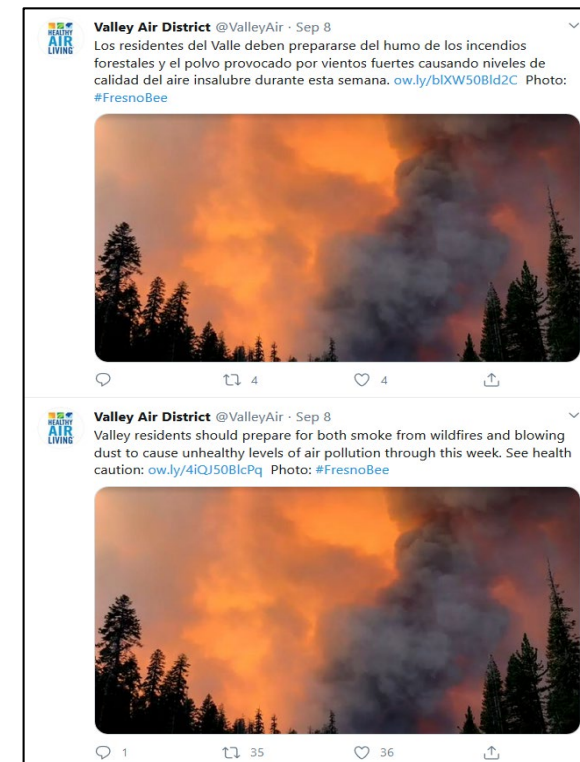
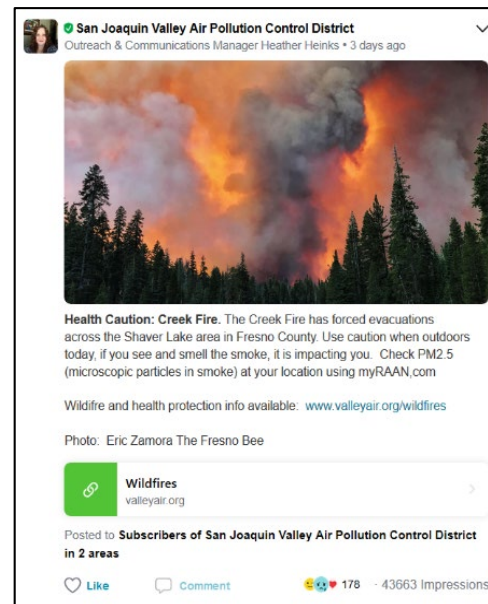
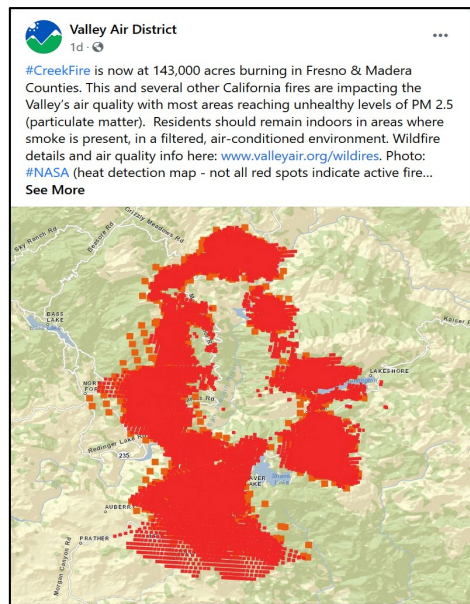


Communicating with Public During Wildfire Events

- Providing accurate and timely health-protective air quality information to the public is a priority
- Partnerships with local Public Health Officers and Directors
 - Ensures uniform messaging
 - First 2021 meeting occurred early June, more to come
- Daily communication with the English- & Spanish-language media
 - Relationships with over 200 Valley media professionals
 - Regular Bilingual Press Releases & Health Caution Statements issued
 - Face-to-face interviews and press conferences
 - Emails to CSC members

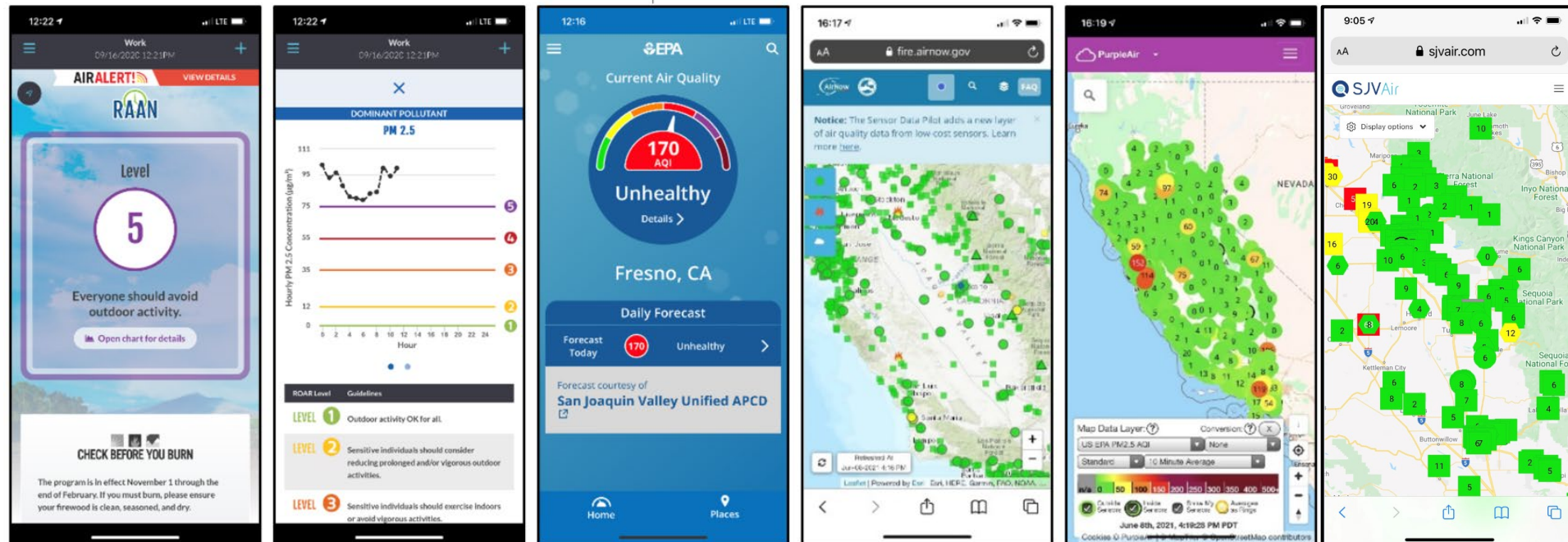
Increasing Importance of Social Media

- Posting in both English and Spanish on four primary social media accounts
 - Facebook, Twitter, Instagram and Nextdoor



Educating Residents on Available Air Quality Tools


- Residents have found mobile applications useful as they provide real-time air quality information in an easily consumable way
- The Valley Air application has been downloaded over 41,000 times
- New air quality tools have become available in recent years
 - District promotes these tools to ensure public has full range of information




District's Wildfire Webpage

- Valuable information regarding wildfires is provided through District's Wildfire Resource page www.valleyair.org/wildfires
 - Provides detailed information about current wildfires, hourly air quality data, health protective tips and a link to temporary air monitors in the mountain and foothill communities
 - Updated on a daily basis, including holidays and weekends during wildfire season
 - Includes real-time wildfire and air quality information from CAL FIRE
 - Provides tools to assist the public in their decision-making
 - Links to health protective information from EPA, Cal/OSHA, CDC, CDPH and others


District's Wildfire Webpage (cont'd)

ACERCA DECONTACTOPAGOEMPLEOIdioma


[Programa de aire comunitario AB 617](#)[Información sobre la calidad del aire](#)[Programas de incentivos](#)[Permiso](#)[Reglas y planificación](#)[Cumplimiento](#)[Negocios, agricultura y uso de la tierra](#)[Difusión y educación](#)[Reuniones públicas y participación](#)

**El humo de los incendios forestales que impacta la calidad del aire del Valle, tenga cuidado.** [Más detalles aquí](#)

[casa](#) • [información sobre la calidad del aire](#) • [información sobre incendios forestales](#)




Información sobre incendios forestales



Regístrese y reciba información sobre la calidad del aire cada hora a través de RAAN

[Información sobre incendios forestales](#)[Comunidades de estribaciones y montañas](#)[Protéjase del humo](#)[Seguridad del trabajador de Cal / OSHA](#)[Recursos](#)




Incendios forestales que pueden estar afectando la calidad del aire en el Valle de San Joaquín:

Dixie Fire
Butte, Plumas

Fuego del río
Condados de Nevada y Placer

Fuego de lava
Condado de Siskiyou



IMPACTS OF WILDFIRE SMOKE

= PARTICULATE MATTER (PM)
A complex mixture of extremely small particles made up of a number of components, including wildfire smoke, metals, dust and soot.

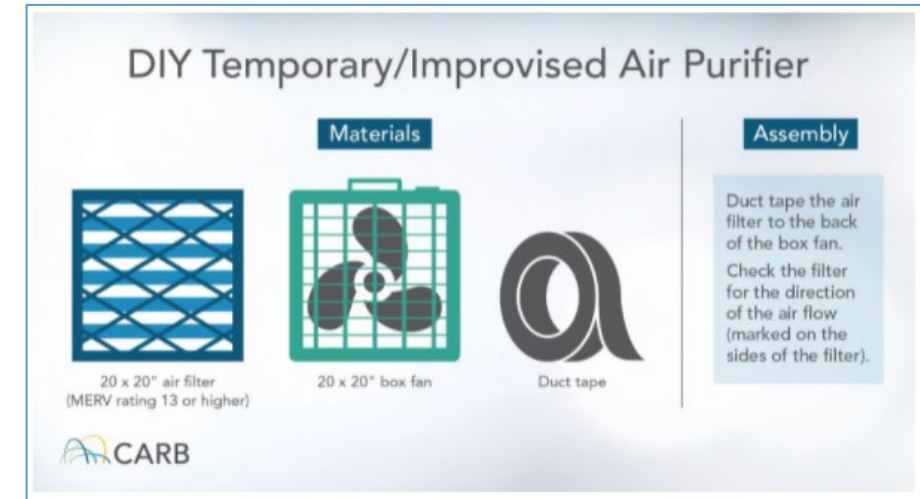
How small?
HUMAN HAIR = 10-100 µm
(µm = thousandth of a centimeter)

PM2.5 (<2.5µm)
PM10 (<10µm)

[INGLÉS](#) [ENGLISH](#)

Suggested Actions to Protect Health

- Keep windows and doors closed
- Create a clean room
- Reduce the smoke that enters your home
- Avoid activities that create more fine particles
- Use fans and air conditioning; if you cannot, seek shelter elsewhere
- Use a portable air cleaner or high-efficiency filter to remove fine particles from the air
- Avoid strenuous activity during smoky times to reduce how much smoke you inhale
- Learn how and when to properly use face masks (N95 as available)
- Air out your home by opening windows or the fresh air intake on your HVAC system when the air quality improves, even temporarily



Wildfire Bilingual Infographic



Other
languages
coming
soon