



# SIERRA CLUB

DELTA-SIERRA GROUP  
MOTHER LODGE CHAPTER

## AB617 STOCKTON STEERING COMMITTEE

10.20.2020  
MEETING

Mary Elizabeth M.S., R.E.H.S.  
Stockton Resident and Sierra Club member since 1991  
Delta-Sierra Group Conservation Chair and ExCom Member

This presentation was prepared while I am on  
[Northern Yokuts Tribal Lands](#)

# Sierra Club Organization

National Club Organization includes three parts –

- Membership-elected Board of Directors (3.8 million)
- Executive Director, Michael Brune, hired by the Board
- Executive team hired by the Executive Director



In California because of our large and diverse geographic membership we have [Sierra Club California](#) that works on statewide issues – we are fortunate to have Eric Parfrey an alternate and a Stockton AB617 Resident as the Chair of the Sierra Club California Executive Committee.



The next level of organization are the 13 Chapters within the State – we are part of the Mother Lode Chapter

The final level of organization is the Group level – we are the Delta-Sierra Group.





The [Delta-Sierra Group](#) has an Executive Committee elected by members of the Group about 870 living in San Joaquin County.

Two members of our Executive Committee are also AB617 Residents: Margo Praus and Mary Elizabeth

The Delta-Sierra Group is involved with several conservation areas involving land, air, and water resources



# Delta-Sierra Group Conservation Work

## Water Resources

- Groundwater Sustainability Planning – Stakeholders Group M.Elizabeth
- Integrated Regional Water Management Planning – Coordinating Committee M.Elizabeth and Margo Praus Alternate
- City of Stockton Water Advisory Group M.Elizabeth
- San Joaquin County Advisory Water Commission M.Elizabeth

## Air, Transportation, and Land Resources

- San Joaquin County Council of Government Citizen's Advisory Commission – Paul Plathe
- Stockton Diamond Grade Separation Stakeholders Group – Paul Plathe and M.Elizabeth Alternate
- San Joaquin Valley Air Pollution Control District Citizen's Advisory Group – Ned Lieba. [SJC recruiting for alternative](#)

# Delta-Sierra Group Land Use

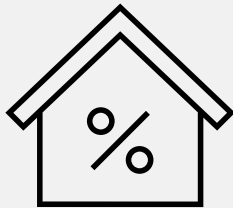
## Housing

[City of Stockton](#)

[Housing Consolidated Plan  
2020-2025](#)

[Analysis of Impediments to Fair  
Housing](#)

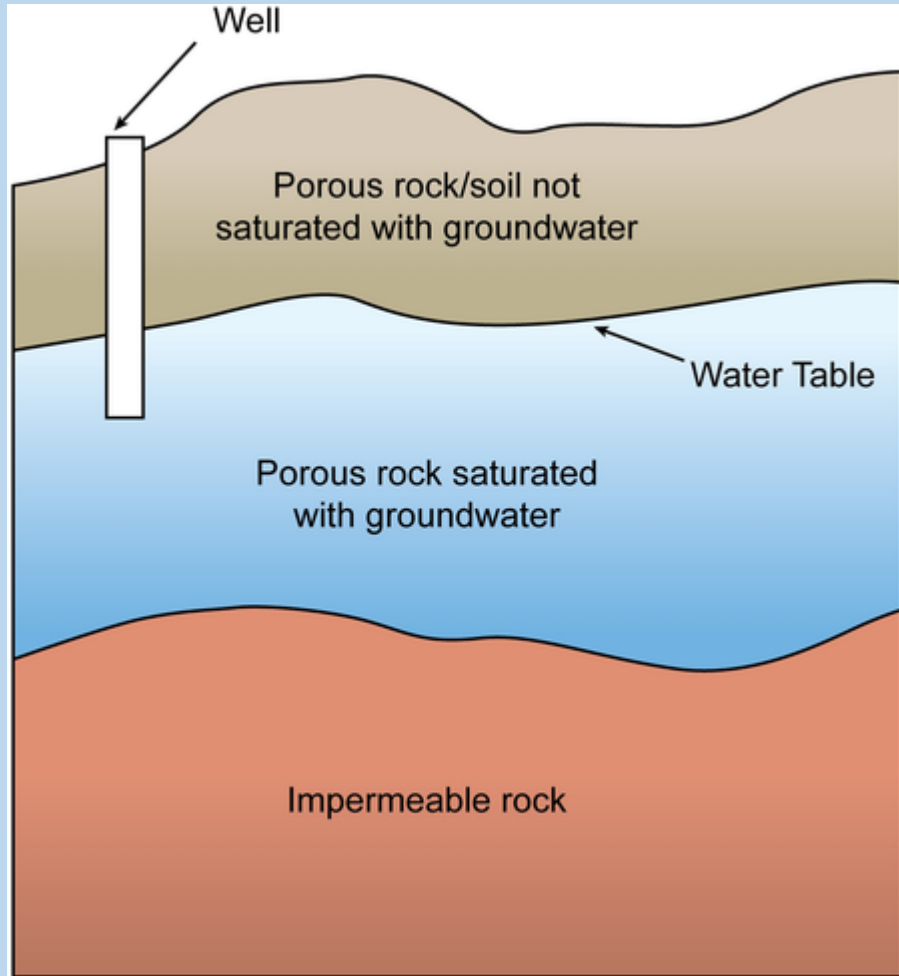
[Delta-Sierra Club Comments.](#)



[Sierra Club California Housing Policy:  
Meeting Our Housing Needs and  
Protecting the Environment 2018](#)

Sanchez-Hoggan Annexation Project  
DEIR- Huge Warehouse Trucking Project  
DEIR Comments Due April 22 File to  
Large for Posting City of Stockton [Link  
to DEIR](#) Due to Covid-19 work related  
issues we were unable to submit  
comments on the Draft EIR but were  
able to submit comments on the Final  
EIR prior to City of Stockton Planning  
Commission Meeting and City Council  
Adoption: [Delta-Sierra Club Comments](#)

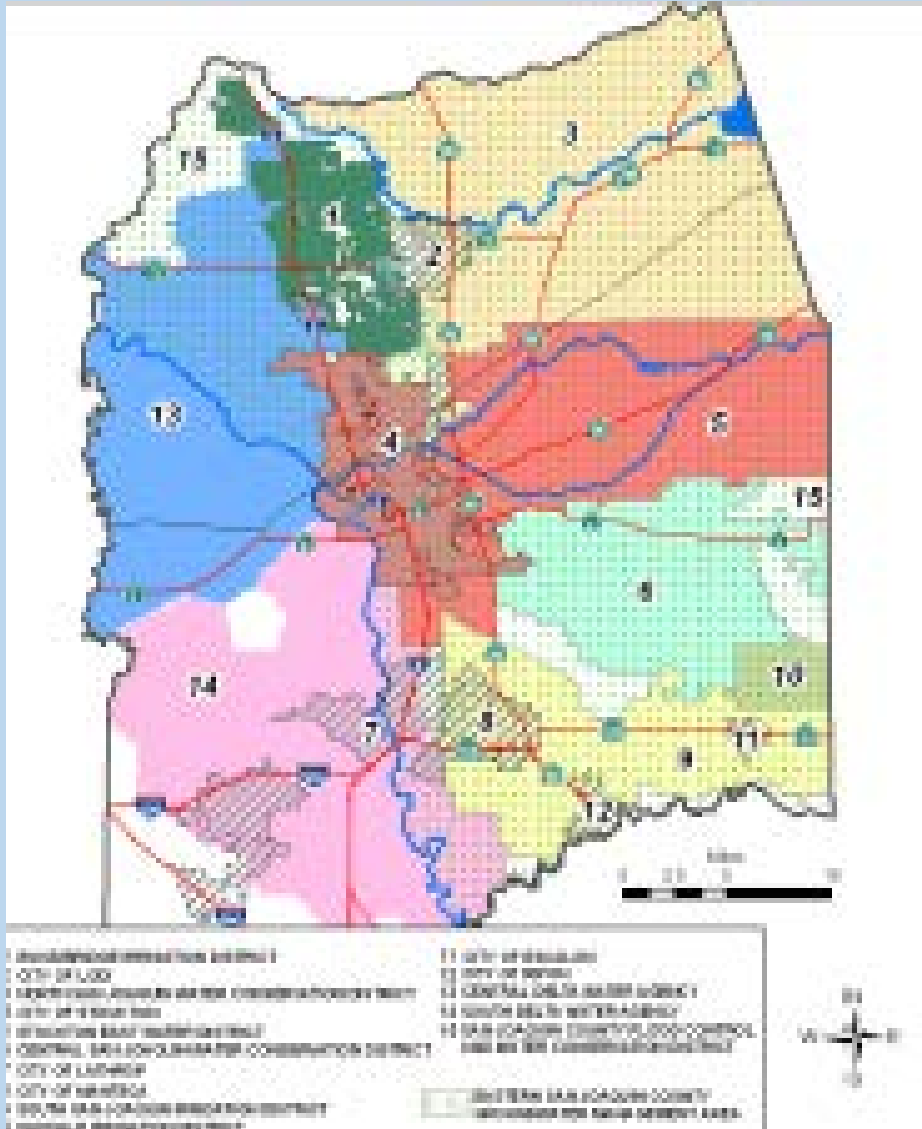
# Delta-Sierra Group Groundwater Work



[This Photo](#) by Unknown Author is licensed under [CC BY-SA](#)

The Delta-Sierra Group was one of a few non-governmental organizations monitoring and participating in the development of the Eastern San Joaquin Groundwater Sustainability Plan submitted to the Department of Water Resources in January 2020. Comments on the Final Plan were due in May and the DSG submitted comments along with some of our NGO Partners. [The comments can be found here along with the Final GSP.](#)

# Delta-Sierra Group Integrated Regional Water Management Work



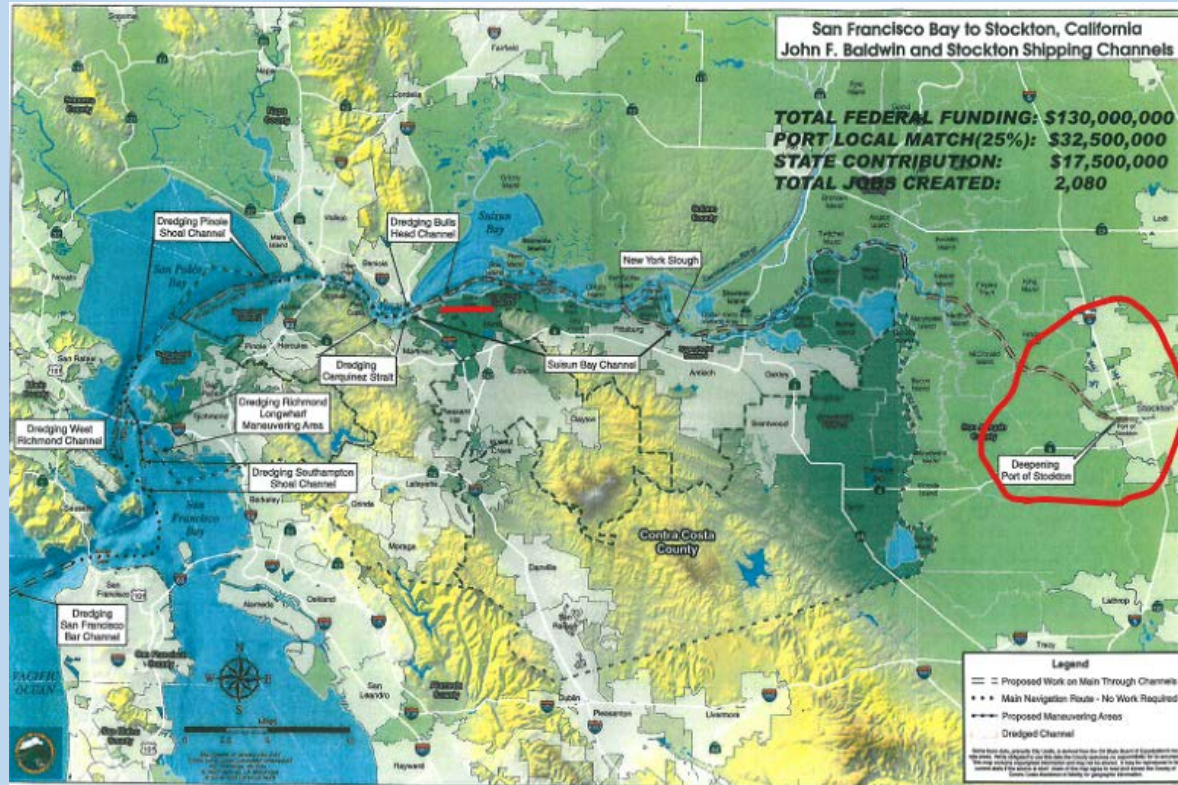
## Greater San Joaquin Regional Water Management Coordinating Committee

Active Recruiting Diverse Organizations to fulfill DWR diversity requirements

Most recent [DSG Comments on Internal Draft of 2020 Addendum](#)



# Delta-Sierra Group Dredging and Delta Tunnel



Port of Stockton is the Local Sponsor

- [Delta-Sierra Group, Restore the Delta, and California Sports Fishing Alliance Comments on Environmental Impact Statement](#)
- [Sierra Club National and Other Groups and Info](#)

DELTA CONVEYANCE PROJECT  
Environmental Justice Community Survey

TAKE THE SURVEY  
**TODAY!**

YourDeltaYourVoice.org

your DELTA your VOICE

If you live or work in the Delta region, **YOUR PERSPECTIVE IS VITAL** to helping identify potential project-related impacts and benefits for the Delta's diverse communities.

[English](#)

[Spanish](#)

[Chinese](#)

[Notice of Preparation Comment Letter DSG \(Amend\)](#)

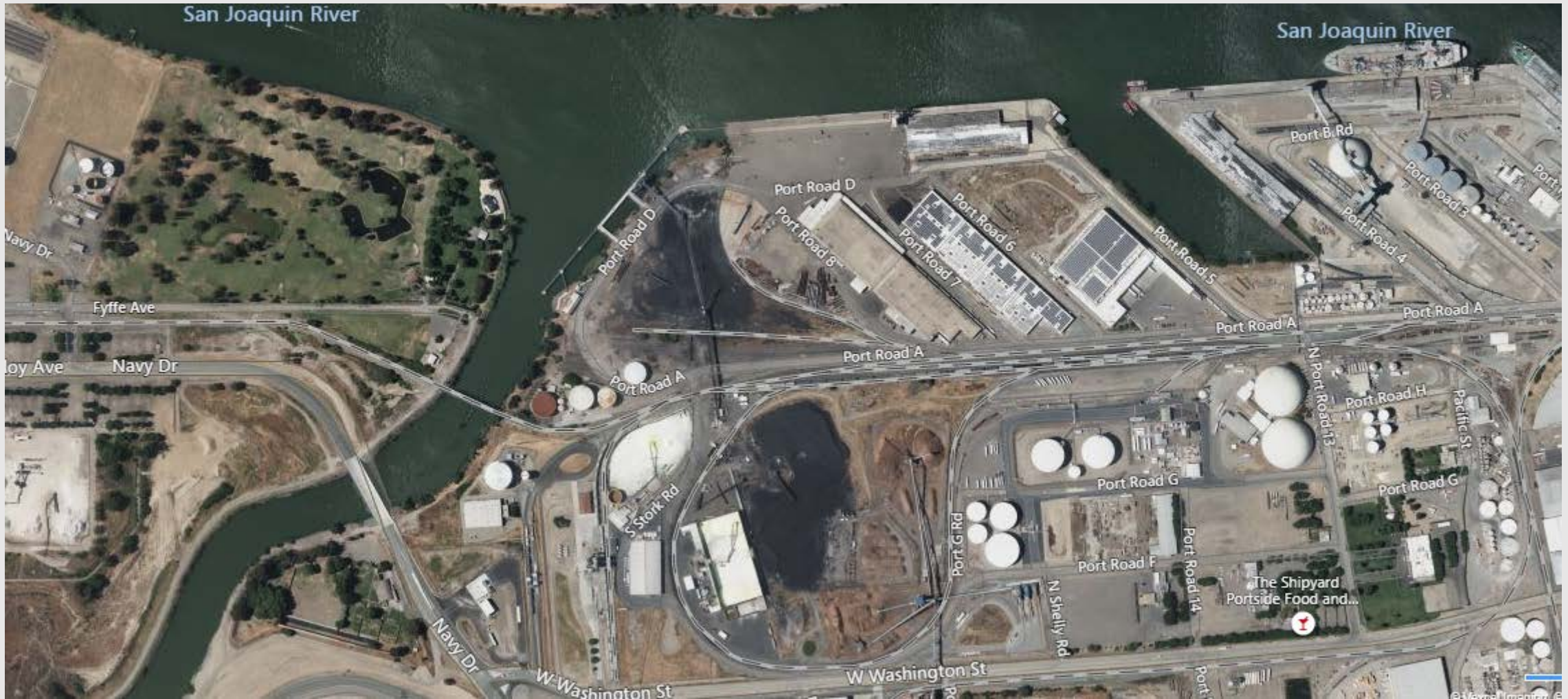
## Delta-Sierra Group Port of Stockton Work

I learned about the Port as a small child from my Grandfather who was a retired longshoreman. My environmental awakening occurred while working as a quality control chemist for McCormack and Baxter Creosoting Company located on Washington Ave. I switched careers and became a REHS working on environmental cleanup sites.





Back in Stockton, I was wondering what was going on but no Port minutes. Then the DSG, Mother Lode Chapter, Redwood Chapter, and Bay Chapter began talks about a Coal Organizer first Terilynn Chen and now Jacob Klein. My commitment to the cause was to go to each meeting and provide comments.



# Delta-Sierra Group Port of Stockton COAL Work

Available information is updated when as available on the [DSG Port of Stockton Overview and Historic Documents](#) webpage. [Toxic Coal Dust](#) is one of our concerns.

Up until 2011 shipments of coal from the port were negligible then quickly maxed in 2014 was the maximum shipped- 2.3 million tons.

<i><u>Commodity Tonnages</u></i>	<i><u>2019</u></i>	<i><u>2018</u></i>
Low Sulfur Coal dry bulk	1,584,111	1,636,116

**This year's Port report did not separate Coal from other bulk commodities.**

The Coal stored and shipped out of the Port of Stockton comes from Utah mines. In 2011, when rail provider Union Pacific and Metro Ports completed a \$1.2 million rail line expansion into the port doubling the coal and iron ore capacity from 3 to 6 trains a week w/unknown environmental analysis.



# Delta-Sierra Group NuStar Marine Terminal Approved by Port Commissioners April 2020.



## Delta Sierra Group DEIR NuStar Comment Letter Jan 2020

**Table 1**  
**Expected Maximum Proposed Project Throughput Compared to Existing Levels (Annual)**

	Baseline (2018)		Project Year 10 (Expected Maximum)	
	Mode (annual moves)	Tons of Product	Mode (annual moves)	Tons of Product
Truck <sup>1</sup>	16,730	459,484	42,000	1,100,000
Rail Cars	534	56,057	4,700	500,000
Rail Trips <sup>2</sup>	27	--	300	--
Ships Calls	20	287,907	50	1,700,000
Barges Calls	0	0	40	200,000
Total Tons	--	803,448	--	3,500,000

**Notes:**

1. Truck calls are expressed in one-way moves.
2. Assumes an average of 20 cars per train
3. Current throughput permitted by the SJVAPCD is 2,628,000 tons per day receiving into and 6,000 tons per day shipping out of the terminal.

The NuStar final EIR was not made available until after the Port of Stockton Commissioners adopted and only upon release of public information request.

# Delta-Sierra Group Lehigh Cement

According to Port staff the Lehigh Health Risk Assessment is to be underway soon as part of development of the Lehigh Southwest Stockton Terminal Project Final EIR and to be complete in early 2021.



[DSG Comments Lehigh Cement Initial Study/Notice of Preparation November 2019](#)

[DSG Comments Lehigh Cement Draft Environmental Impact Report](#)

[DSG Attorney Letter](#)



# Delta-Sierra Group Cottonseed Stockpile Comments

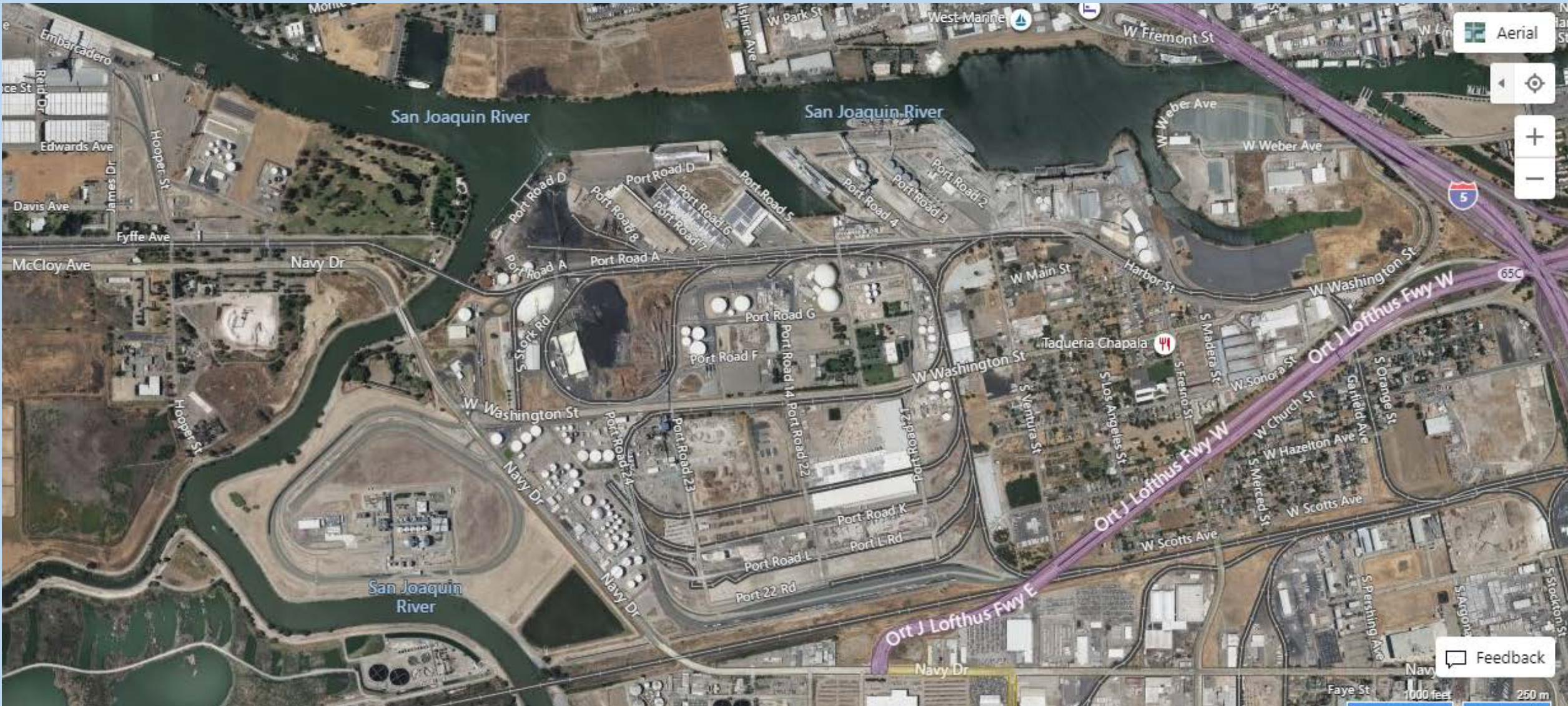
According to Port Staff: the CVAG Bulk Whole Cottonseed Transload Facility Final IS/MND is anticipated to be completed in late 2020.

***How has this facility operated for a year on property under the Port of Stockton's jurisdiction, without an SJVAPCD permit or Port of Stockton lease and stormwater management approval?***





10.19.2020 Port Agenda Item Categorical Exemption – no environmental impact analysis or mitigation: Fyfee Ave





# Air Pollution – Harmful Algal Blooms

[Facts about Cyanobacterial Harmful Algal Blooms for Poison Center Professionals: CDC](#); [Algae Blooms Affect Air Quality](#);  
[Research Shows Harmful Algal Blooms Can Become Airborne](#)

Blue green algae are a group of bacterial organisms that are among the oldest (Archaeobacteria) on Earth. They can live in freshwater, salt water, or in mixed “brackish” water. Cyanobacteria can be many colors including green, red, orange, or brown.

Cyanobacteria, can multiply quickly with high nutrient levels, particularly when the water is warm and the weather and flows are calm. This population explosion causes “blooms” of blue-green algae that turn the water green.

[Increased aeration can reduce the blooms](#)

For more information on how to protect yourself and your family from algal blooms, [visit Restore the Delta’s website](#).



Sierra Club Acknowledgment  
that our Founder John Muir was  
not always as enlightened as  
he was in his later years.

[Racial Justice is Climate Justice: Join our 5-week series to read, learn, and grow in understanding](#)

Some recent Sierra Club articles that are  
recommended to read:

- 1 - [Racism is Killing the Planet, by Hop Hopkins](#)
- 2 - ["I Can't Breathe": What air pollution and police violence have in common, by Kendra Pierra-Louis](#)







Zip code is the most powerful indicator for health and all zip codes are not created equal. Clean Air for ALL!